

2x6.5 with Quad Tweeter In-Wall Satellite

QX In-Wall Series

Key Features:

- 2-6.5 inch woofers drivers for rich midrange
- Quad tweeter array with 22.5 degree slant for wide dispersion at high frequencies.
- In wall design for space saving and limited interference.



Applications:

- Home theater/audio
- Marine audio
- Space saving in-wall distributed audio systems

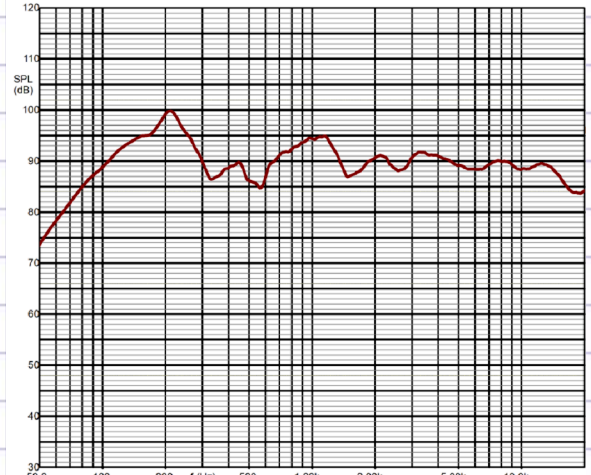
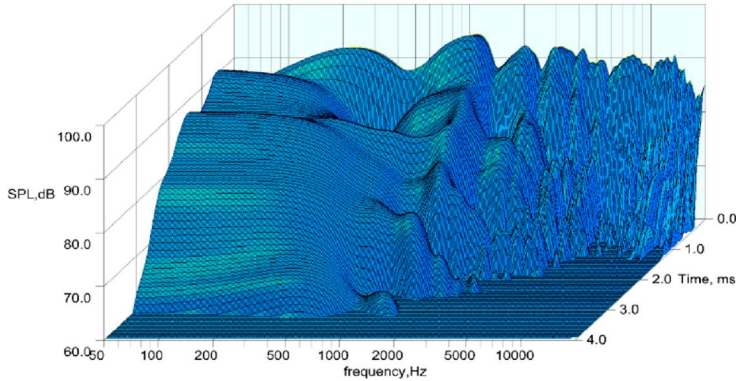
The QX630 in-wall LCR loudspeaker features a sleek modern appearance with a borderless aluminum grille that protrudes less than .2 wall. James all new quad tweeter array, incorporating four .75" (19mm) aluminum dome tweeters in a 22.5° offset array for wide dispersion, high power handling and low distortion promises to deliver audiophile-quality where it counts.

Combined with two 6.5" (165mm) high output aluminum cone woofers, the QX630 has an impressive 91dB sensitivity with bass down to 65Hz. A multi-element network blends the highs and lows into a smooth and wide response.

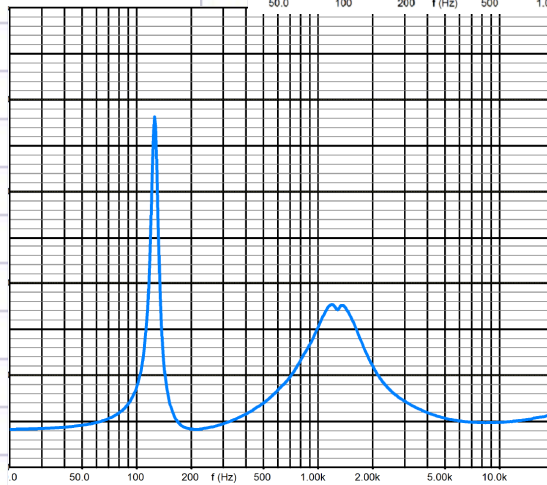
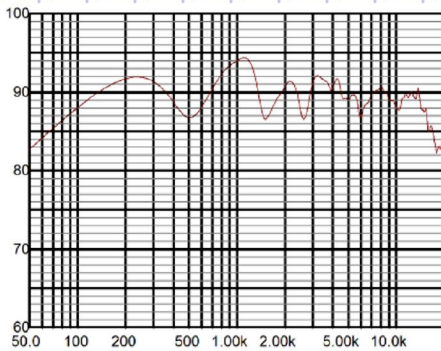
The sealed cabinet design features all aircraft aluminum construction for strength, sonic performance and suitability for outdoor/marine applications. A stainless steel grille provides protection to the components yet has a subdued visual effect, designed to be as unobtrusive as possible.

System Type	2x6.5 in-wall Satellite
Frequency Range	65-20kHz
Recommended Crossover Frequency	80Hz High-pass - 24dB/octave
Power Rating (continuous/program/peak)	50W/100W/200W
Sensitivity (2.83V @ 1m)	91dB
Max SPL	108dB
Nominal Impedance	8ohm
Low Frequency Driver	2x 6.5 inches Loudspeaker Aluminum Woofer
High Frequency Driver	4x .75 (19.05mm) James Loudspeaker Aluminum dome Tweeter in Quad Array
Input Connectors	Spring Loaded 2 Prong
Mounting	Aluminum Front Plate Mount
Dimensions (HxWxD)	(22.5x9.625x3.875) in (565x244x98) mm
Net weight	20lbs/9.1kg
Grille Dimensions (HxWxD)	(22.5x9.625x.1875) in (565x244x4.75) mm
Grille Finishes	Stainless steel no.304 perforated (custom color preference)

2x6.5 with Quad Tweeter In-Wall Satellite



Waterfall Graph



SPL-Response

Impedance

Drawing of QX630

