

WILLIE MYETTE'S

**JAZZ
EDGE**

LESSONS



Jazz Improv Vol 3. Bebop Lines

Willie Myette

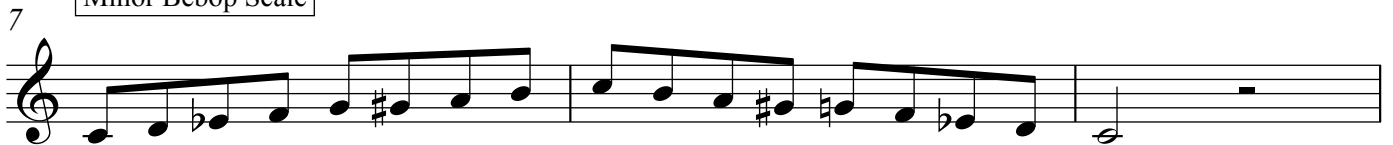
Bebop scale



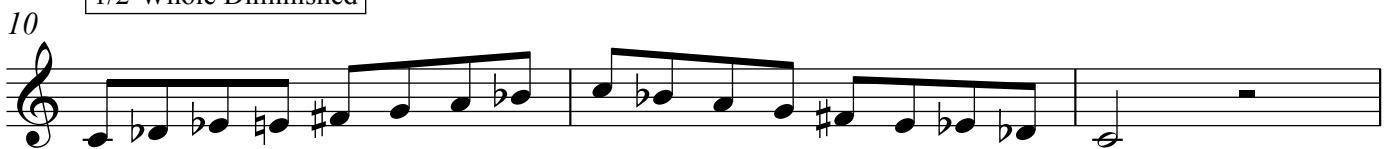
Major Bebop Scale



Minor Bebop Scale



1/2-Whole Diminished



Descending bebop scale over V-I and ii-V-I

13 C⁷ F^{Δ7} G⁻⁷ C⁷ F^{Δ7}

Descending 1/2 - whole diminished

17 C⁷ F^{Δ7} C⁷ F^{Δ7}

21 C⁷ F^{Δ7} G⁻⁷ C⁷ F^{Δ7}

using quartal voicings

ii-V-I

25

Diminished chord built on the b9

27 C⁷ F^{Δ7} C⁷ F^{Δ7} C⁷ F^{Δ7} C⁷ F^{Δ7}

Diminished arpeggios

Diminished arpeggios with 4-note scale blocks

31 C7 F Δ 7 C7 F Δ 7

35 C7 F Δ 7 C7 F Δ 7

Sequencing diminished arpeggio lines

39 C7 F Δ 7

The "leaping fourth" in Major

42 F Δ 7 F Δ 7 F Δ 7

The "leaping third" in minor

45 G-7 G-7 G-7 G-7

This musical example shows a piano accompaniment for four measures. The key signature has one flat (B-flat). The melody in the right hand features a 'leaping third' interval, moving from G4 to B-flat4. The bass line in the left hand consists of sustained chords: G-7 (B-flat, D, F, G) in the first three measures, and G-7 (B-flat, D, F, G) with a sharp sign over the B-flat in the fourth measure.

The "leaping fourth" V7 to I

49 C7 FΔ7 C7 FΔ7 C7 FΔ7

This musical example shows a piano accompaniment for six measures. The key signature has one flat (B-flat). The melody in the right hand features a 'leaping fourth' interval, moving from G4 to C5. The bass line in the left hand consists of sustained chords: C7 (B-flat, E, G, C) in the first, third, and fifth measures, and FΔ7 (B-flat, C, E, F) in the second, fourth, and sixth measures.

4-note approaches (delayed resolution)

52 C7

This musical example shows a piano accompaniment for five measures. The key signature has one flat (B-flat). The melody in the right hand features four-note approaches (chromatic lines) that do not resolve immediately. The bass line in the left hand consists of sustained chords: C7 (B-flat, E, G, C) in the first measure, and a whole rest in the following four measures.

Common bebop line

57 G-7 C7 A-7 D7

This musical example shows a piano accompaniment for four measures. The key signature has one flat (B-flat). The melody in the right hand features a common bebop line: G4-A4-B-flat4-C5. The bass line in the left hand consists of sustained chords: G-7 (B-flat, D, F, G) in the first measure, C7 (B-flat, E, G, C) in the second measure, and A-7 (B-flat, C, E, F) and D7 (C, E, G, A) in the third and fourth measures, respectively.

59 B-7 E7 E-7 A7

Common bebop line (ii-V-I)

61 G-7 C7 FΔ7

Two-measure ii-V-I ex.1

63 G-7 C7 FΔ6

Two-measure ii-V-I ex.2

66 G-7 C7 FΔ7

Two-measure ii-V-I ex.3

69 G⁻⁷ C⁷ F^{Δ7}

One-measure ii-V-I ex.1

72 G⁻⁷ C⁷ F^{Δ7}

One-measure ii-V-I ex.2

74 G⁻⁷ C^{7b9} F^{Δ7}

One-measure ii-V-I ex.3

76 G⁻⁷ C⁷ F^{Δ7}