

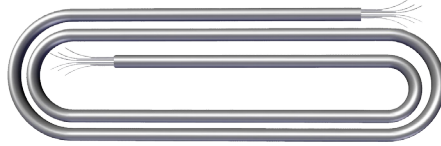
Components



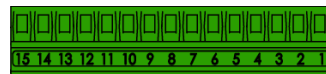
Meter and
Indicator



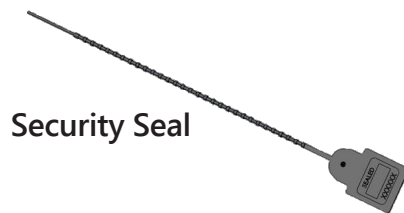
Cable Glands



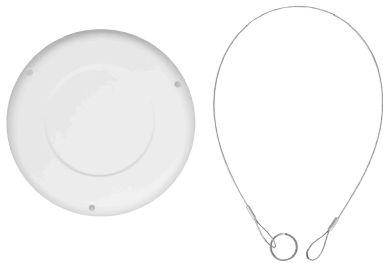
Power/Output Cable
(DC configuration)



15 Pin Connector
(DC configuration)

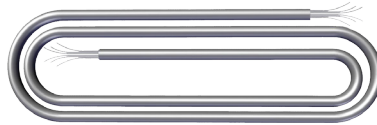


Security Seal



Protective faceplate
cover and lanyard

Optional



Output Cable
(Battery
configuration)



Second Output
Cable (DC
configuration)

Recommended Tools

Recommended:

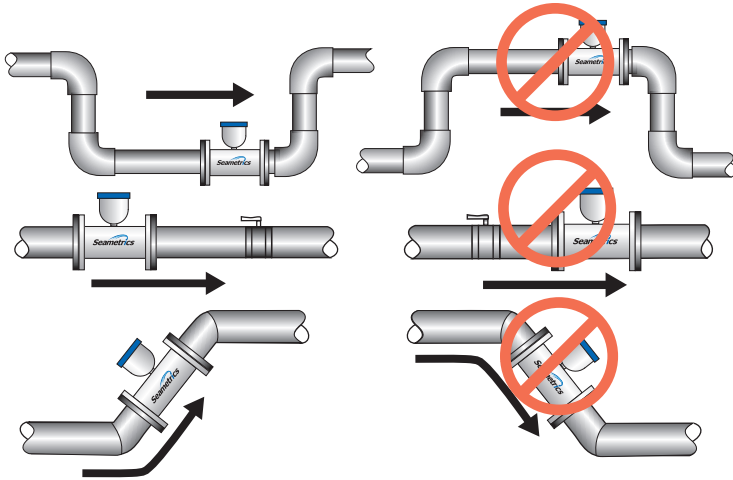
- T-15 Torx head driver
- 0.098 inch (small) flat head screw driver
- Crescent Wrench

Optional:

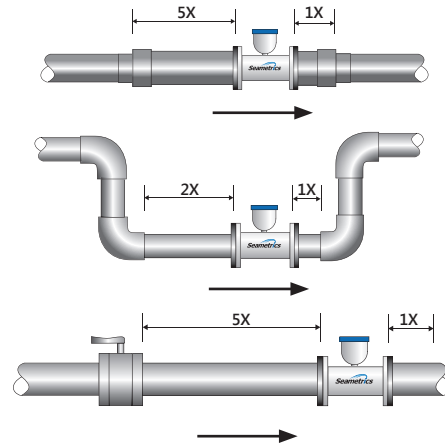
- Channel locks

Positioning

Choose a position that will ensure a full pipe.



Choose a position that will minimize flow distortion.

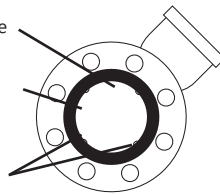


Recommended:
Improved accuracy
results from
unimpeded electrodes

Intermittent air
bubbles miss electrode

Electrode moved from
top by rotating meter

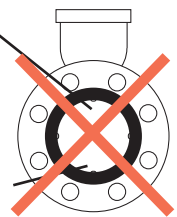
Electrodes free from
sediment build-up



Not Ideal:
Air bubbles and
sediment on the
electrodes can affect
accuracy

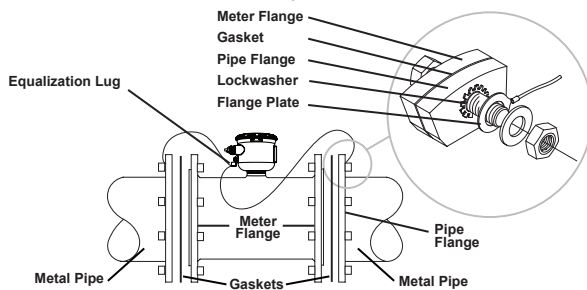
Intermittent air
bubbles pass
over electrode

Possible
sediment
build-up

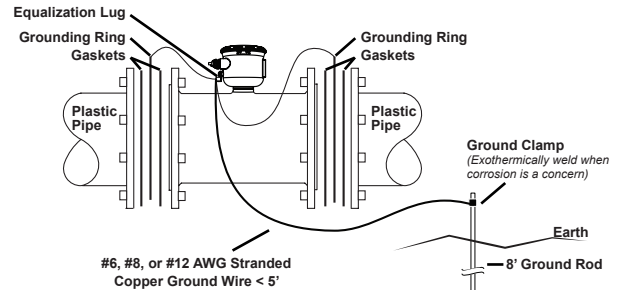


Grounding

Metal Pipe



Plastic Pipe



Warnings

Refer to instruction manual for further details.

- This meter is sensitive to heat. Do not weld or flame cut within 10' of meter. Heat will damage electronics and liner. (Heat will void warranty.)
- It is highly recommended that full face gaskets be installed on each end of the meter to protect the liner. (Damage to liner will void warranty.)
- Tube must be completely aligned with adjoining flanges.
- Bolts must be tightened evenly. Do not over tighten one side to fill a gap.
- Improper sealing of cables or cable glands will void warranty.
- Install security seal during installation if regulations require.

Refer to the **Electrical Quick Start Guide** or the complete instruction manual for details on wiring.