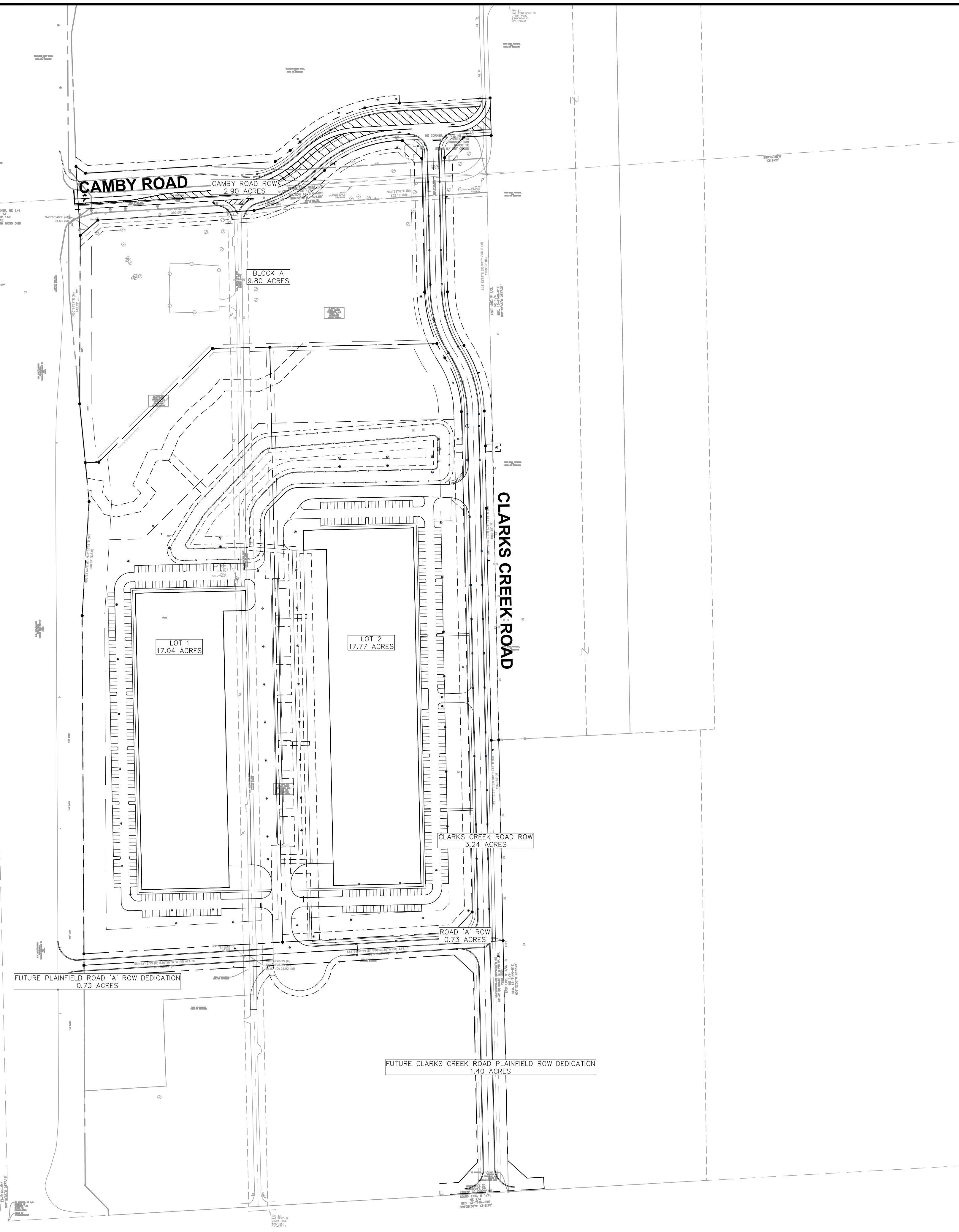


Drawing name: K:\IND_DEV\170008020_Ambrose_Rock-Creek-Plainfield_IN\2_Design\CADD\PlanSheets\Primary_Plan\Plainfield_Logistics_Park_East_Phase_170008020_Ambrose_Rock-Creek-Plainfield_SitePlan_Rev_2024-0613.dwg C3.0 Jun 13, 2024 10:57pm by Chad Mayes
 This document, together with the concepts and designs presented herein, as an instrument of service, is intended only for the specific purpose and client for which it was prepared. Reuse of and improper reliance on this document without written authorization and adaptation by Kimley-Horn and Associates, Inc. shall be without liability to Kimley-Horn and Associates, Inc.



Indiana Utilities Protection Service
Call 811
 before you dig

NORTH
 GRAPHIC SCALE IN FEET
 0 75' 150' 300'

SITE SUMMARY	
SITE ZONING	I-2 & HB
SITE ACREAGE	51.48 AC.±
SITE ACREAGE HB	12.16 AC.±
SITE ACREAGE I-2	39.32 AC.±
BUILDING A AREA	182,520 SF
BUILDING B AREA	218,400 SF
PARKING SPACES (STANDARD) REQUIRED	
BUILDING A	256 SPACES
BUILDING B	284 SPACES
PARKING SPACES (STANDARD) PROVIDED	
BUILDING A	256 SPACES
BUILDING B	284 SPACES
TOTAL PARKING SPACES PROVIDED	540 SPACES

PLAINFIELD LOGISTICS PARK EAST PHASE 1 PLAINFIELD, IN	OVERALL SITE PLAN	AMBROSE	Bryan Starned PROFESSIONAL ENGINEER	SCALE: AS NOTED DESIGNED BY: CSM DRAWN BY: CAN CHECKED BY: BAS	Kimley-Horn 2024 KIMLEY-HORN AND ASSOCIATES, INC. 500 EAST 96TH STREET, SUITE 300, INDIANAPOLIS, IN 46240 WWW.KIMLEY-HORN.COM	REVISIONS NO. DATE BY
	ORIGINAL ISSUE: 05/23/2024 KHA PROJECT NO. 170008020 SHEET NUMBER C3.0					