



ISSUE/REVISION RECORD

DATE DESCRIPTION

05/29/24 PRELIM PACKAGE



RACETRAC INC.
200 GALLERIA PARKWAY SOUTHEAST
SUITE 900
ATLANTA, GEORGIA 30339
(770) 431-7600

PROJECT NAME

PLAINFIELD

**PLAINFIELD
IN 46168
ADDRESS**

RACETRAC STORE NUMBER

#1521

PROTOTYPE SERIES 2024

2024 RH MO 0103

PLAN MODIFICATION NOTICE

SPB NO. 0103 DATE 03/15/24

STANDARD PLAN BULLETINS (SPB) MODIFY THE
PROTOTYPE SERIES SET NOTED ABOVE. THE
LISTED SPB REPRESENTS THE LATEST
MODIFICATION INCORPORATED TO THIS
PROTOTYPE SERIES SET AT ORIGINAL RELEASE.
THE ISSUE/REVISION RECORD COLUMN ABOVE
LISTS ANY REVISIONS OR SPB INCORPORATED IN
THIS SET AFTER THE ORIGINAL RELEASE.
CONTACT RACETRAC ENGINEERING AND
CONSTRUCTION FOR ANY SUBSEQUENT
BULLETINS NOT INCORPORATED HEREIN.

PROFESSIONAL SEAL

PRELIMINARY DRAFT NOT
CONSTRUCTION, BID, RELIANCE,
RECORDING PURPOSES OR
IMPLEMENTATION.

PROJECT NUMBER

2024157.17

SHEET TITLE

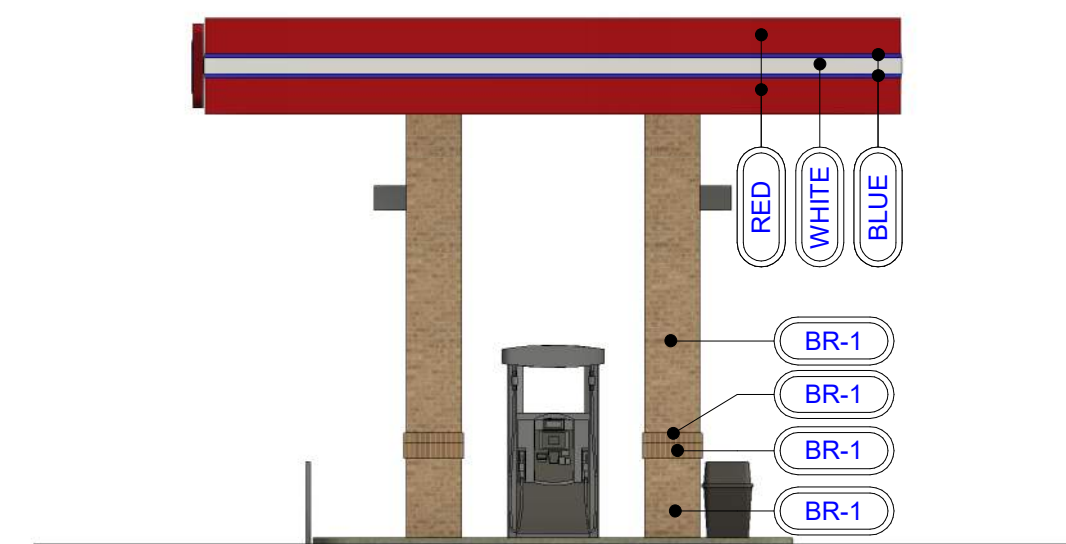
**EDO FUEL CANOPY
ELEVATIONS**

SHEET NUMBER

200



2 EDO CANOPY FRONT ELEVATION
1/8" = 1'-0"



1 EDO CANOPY ELEVATION
1/8" = 1'-0"

FUEL CANOPY FINISH SCHEDULE			
ID	MANUF.	MATERIAL	COMMENTS
BRICK			
BR-1	US BRICK	LAREDO (QUEEN 1/3 BOND)	MORTAR COLOR "LIGHT BUFF"
FASCIA			
BLUE	-		2" BLUE STRIPE
RED	-		REFER TO SPECIFICATION CHART ON SHEET C100
WHITE	-		8" WHITE STRIPE
PAINT			
EP-1	SHERWIN WILLIAMS	EXTERIOR PAINT TO SW #7020 "BLACK FOX"	

STANDARD CANOPY FASCIA COLOR SPECIFICATION CHART		
COLOR CALLOUT	CANOPY MANUFACTURER	STANDARD COLOR SPECIFICATION
"TAN"	LANE CANOPIES	ETT TAN FASCIA
	McGEE CANOPIES	ETT TAN FASCIA
	MADISON CANOPIES	PUEBLO TAN FASCIA
"RED"	LANE CANOPIES	TRD RED FASCIA
	McGEE CANOPIES	TRD RED FASCIA - PROGRAM RED
	MADISON CANOPIES	PROGRAM RED FASCIA



GPD GROUP, INC.

520 S. MAIN STREET, STE 2511
AKRON, OH 44311

ISSUE/REVISION RECORD

DATE	DESCRIPTION
05/29/24	PRELIM PACKAGE

RaceTrac

RACETRAC INC.
200 GALLERIA PARKWAY SOUTHEAST
SUITE 900
ATLANTA, GEORGIA 30339
(770) 431-7600

PROJECT NAME

PLAINFIELD

**PLAINFIELD
IN 46168
ADDRESS**

RACETRAC STORE NUMBER

#1521

**PROTOTYPE SERIES 2024
2024 RH MO 0103**

PLAN MODIFICATION NOTICE

SPB NO. 0103 DATE 03/15/24

STANDARD PLAN BULLETINS (SPB) MODIFY THE
PROTOTYPE SERIES SET NOTED ABOVE. THE
LISTED SPB REPRESENTS THE LATEST
MODIFICATION INCORPORATED TO THIS
PROTOTYPE SERIES SET AT ORIGINAL RELEASE.
THE ISSUE/REVISION RECORD COLUMN ABOVE
LISTS ANY REVISIONS OR SPB INCORPORATED IN
THIS SET AFTER THE ORIGINAL RELEASE.
CONTACT RACETRAC ENGINEERING AND
CONSTRUCTION FOR ANY SUBSEQUENT
BULLETINS NOT INCORPORATED HEREIN.

PROFESSIONAL SEAL

PRELIMINARY DRAFT NOT
CONSTRUCTION, BID, RELIANCE,
RECORDING PURPOSES OR
IMPLEMENTATION.

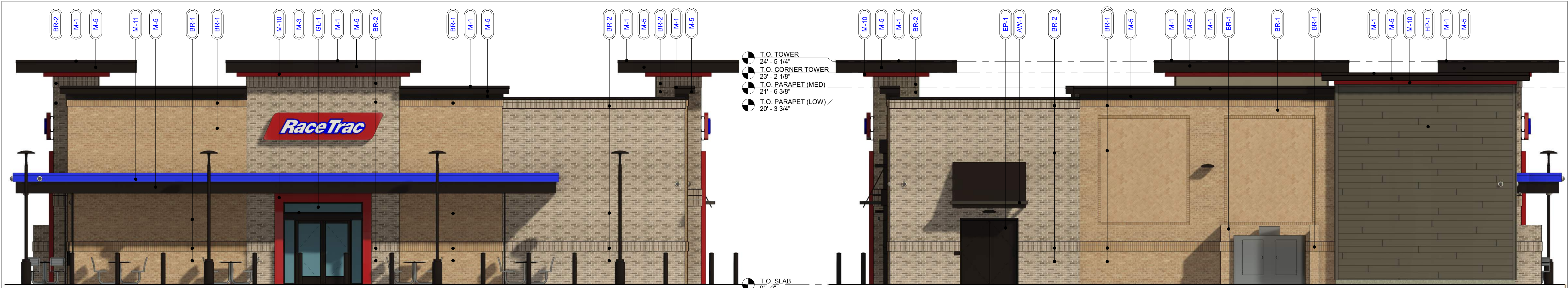
**PROJECT NUMBER
2024157.17**

SHEET TITLE

**EXTERIOR
ELEVATIONS**

SHEET NUMBER

300



**RIGHT ELEVATION
(ENTRY)** 1,578 TOTAL SF

MATERIAL	SQ. FOOT.	% OF ELEVATION
BRICK	1,102	70%
EIFS	0	0%
GLAZING	78	5%
METAL	398	25%
COMPOSITE SIDING	0	0%

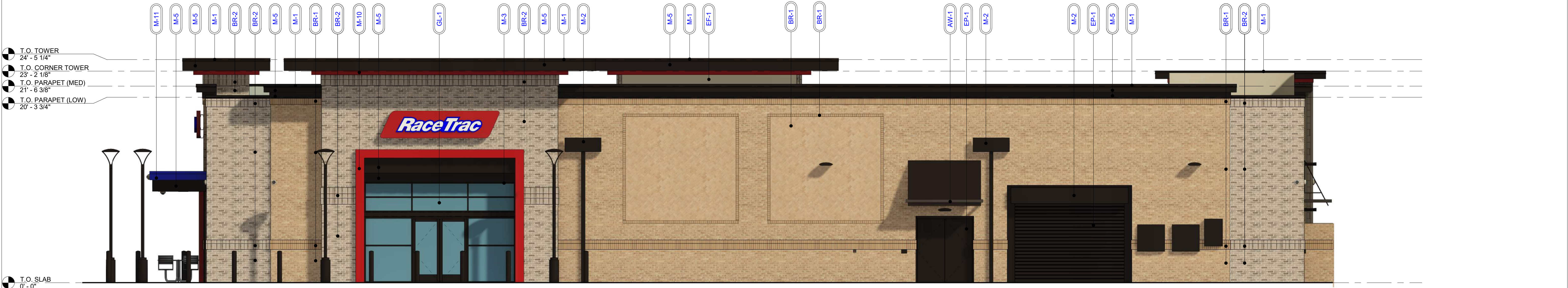
ELEVATION	SIGNAGE	DIMENSIONS	AREA
RIGHT	RT PARALLELOGRAM	13'-5/8" X 3'-0"	40 SF

**LEFT ELEVATION
(NON-ENTRY)** 1,578 TOTAL SF

MATERIAL	SQ. FOOT.	% OF ELEVATION
BRICK	884	56%
EIFS	54	3%
GLAZING	0	0%
METAL	246	16%
COMPOSITE SIDING	394	25%

4 RIGHT ELEVATION
3/16" = 1'-0"

3 LEFT ELEVATION
3/16" = 1'-0"



REAR ELEVATION 2,680 TOTAL SF

MATERIAL	SQ. FOOT.	% OF ELEVATION
BRICK	1,754	65%
EIFS	48	2%
GLAZING	182	7%
METAL	696	26%
COMPOSITE SIDING	0	0%

ELEVATION	SIGNAGE	DIMENSIONS	AREA
REAR	RT PARALLELOGRAM	13'-5/8" X 3'-0"	40 SF
REAR	RT BANNER	4'-0" X 3'-0"	12 SF
REAR	RT BANNER	4'-0" X 3'-0"	12 SF

2 REAR ELEVATION
3/16" = 1'-0"



FRONT ELEVATION 2,695 TOTAL SF

MATERIAL	SQ. FOOT.	% OF ELEVATION
BRICK	1,471	55%
EIFS	53	2%
GLAZING	265	10%
METAL	512	19%
COMPOSITE SIDING	394	14%

ELEVATION	SIGNAGE	DIMENSIONS	AREA
FRONT	RT PARALLELOGRAM	13'-5/8" X 3'-0"	40 SF
FRONT	BANNER	7'-8" X 5'-6"	42 SF

1 FRONT ELEVATION
3/16" = 1'-0"

EXTERIOR MATERIAL SCHEDULE

AWNING	AW-1	ALUMINUM AWNING	SELECTED BY RACETRAC
BRICK	BR-1	US BRICK	LAREDO (QUEEN 1/3 BOND) MORTAR COLOR "LIGHT BUFF"
BRICK	BR-2	US BRICK	MOUNT RUSHMORE (QUEEN 1/3 BOND) MORTAR COLOR "LIGHT BUFF"
CEMENT BOARD	HP-1	JAMES HARDIE	SMOOTH LAP SIDING (OR APPROVED ALTERNATE)
EIFS	EF-1	STO	EIFS FASCIA AND SOFFIT
GLAZING	GL-1		1" NON-IMPACT RATED INSULATED GLAZING
METAL	M-1		PREFINISHED 4" 2-PIECE COMPRESSION METAL COVER
METAL	M-2		COLOR DARK BRONZE
METAL	M-3	VISTAWALL (OR APPROVED ALTERNATE)	FG-3000 STOREFRONT SYSTEM (OR APPROVED ALTERNATE)
METAL	M-5	ALCOA	REYNOBOND PE
METAL	M-7	VERSATEX	WP4 TONGUE AND GROOVE 1"x6"x8" (OR APPROVED ALTERNATE)
METAL	M-10	ALCOA	REYNOBOND PE
METAL	M-11	ALCOA	REYNOBOND PE
METAL	M-15		PREFINISHED 6" 2-PIECE COMPRESSION METAL COVER
PAINT	EP-1	SHERWIN WILLIAMS	EXTERIOR PAINT TO SW #7020 "BLACK FOX"
TREX	TX-1	SELECT COMPOSITE	1"X 6"
WINDOW FILM	WF-1		WINDOW FILM, 3M PRESTIGE 70 SOLAR FILM LOCATIONS
WINDOW FILM	WF-2		WINDOW FILM, OPAQUE SEE A600 FOR WINDOW FILM LOCATIONS