

Indiana Utilities Protection Service
Call 811
 before you dig

PAVING LEGEND

	STANDARD DUTY ASPHALT PAVEMENT SEE CONSTRUCTION DETAILS FOR PAVEMENT SECTION
	HEAVY DUTY ASPHALT PAVEMENT SEE CONSTRUCTION DETAILS FOR PAVEMENT SECTION
	RIGHT OF WAY PAVEMENT SEE CONSTRUCTION DETAILS FOR PAVEMENT SECTION
	CONCRETE SIDEWALK SEE CONSTRUCTION DETAILS FOR PAVEMENT SECTION
	HEAVY DUTY CONCRETE PAVEMENT SEE CONSTRUCTION DETAILS FOR PAVEMENT SECTION
	RIPRAP SEE CONSTRUCTION DETAILS FOR RIPRAP SECTION

SITE SUMMARY

SITE ZONING	=	I-2
SITE ACREAGE	=	± 7.05 AC.
BUILDING AREA	=	70,425 SF
BUILDING HEIGHT	=	39' 1" FT
PARKING SPACES (ACCESSIBLE) REQUIRED	=	3 SPACES
PARKING SPACES (STANDARD) PROVIDED	=	72 SPACES
PARKING SPACES (ACCESSIBLE) PROVIDED	=	4 SPACES
TOTAL PARKING SPACES PROVIDED	=	76 SPACES
PARKING RATIO	=	1 / 926 SF
FUTURE PARKING SPACES	=	31

KEY NOTES

- EXTRUDED CONCRETE CURB (SEE DETAILS)
- DEPRESSED CURB (SEE DETAILS)
- CONCRETE SIDEWALK (PLAINFIELD STANDARD DETAILS, SHEET 3)
- CONCRETE CURB AND WALK (SEE DETAIL) (5' FROM FACE OF CURB)
- CONNECT TO EXISTING PAVEMENT, SIDEWALK, CURB, TYP.
- CONCRETE PARKING BUMPER TYP. (SEE DETAILS)
- ACCESSIBLE PAVEMENT MARKINGS, TYP. (SEE DETAILS)
- ACCESSIBLE PARKING SIGN, TYP. (SEE PLAN FOR VAN LOCATION) (MUTCD R7-8, SEE DETAILS)
- ACCESSIBLE RAMP (PLAINFIELD STANDARD DETAILS, SHEET 4)
- 2" WIDE TACTILE WARNING STRIP
- 4" WIDE PAINTED WHITE SOLID LINE, TYP.
- 24" WIDE STOP BAR, TYP. (SEE DETAILS)
- STOP SIGN, TYP. (PLAINFIELD STANDARD DETAILS, SHEET 6)
- BOLLARD, TYP. (SEE DETAILS)
- TRANSFORMER PAD (SEE ARCHITECTURAL PLANS FOR DETAILS)
- LIGHT POLES SHOWN FOR COORDINATION ONLY (SEE SITE LIGHTING PLAN)
- 5'X5' CONCRETE STOOP
- CROSS WALK STRIPING
- 2' CURB TURNOUT (SEE DETAILS)
- MONOLITHIC 6" CONCRETE CURB
- REINFORCED CONCRETE GUTTER (PLAINFIELD STANDARD DETAIL D5-R01, SHEET 4)
- CONCRETE / ASPHALT INTERFACE (SEE DETAILS)
- 20" MOW STRIP
- 8' WOOD FENCE (SEE DETAILS)

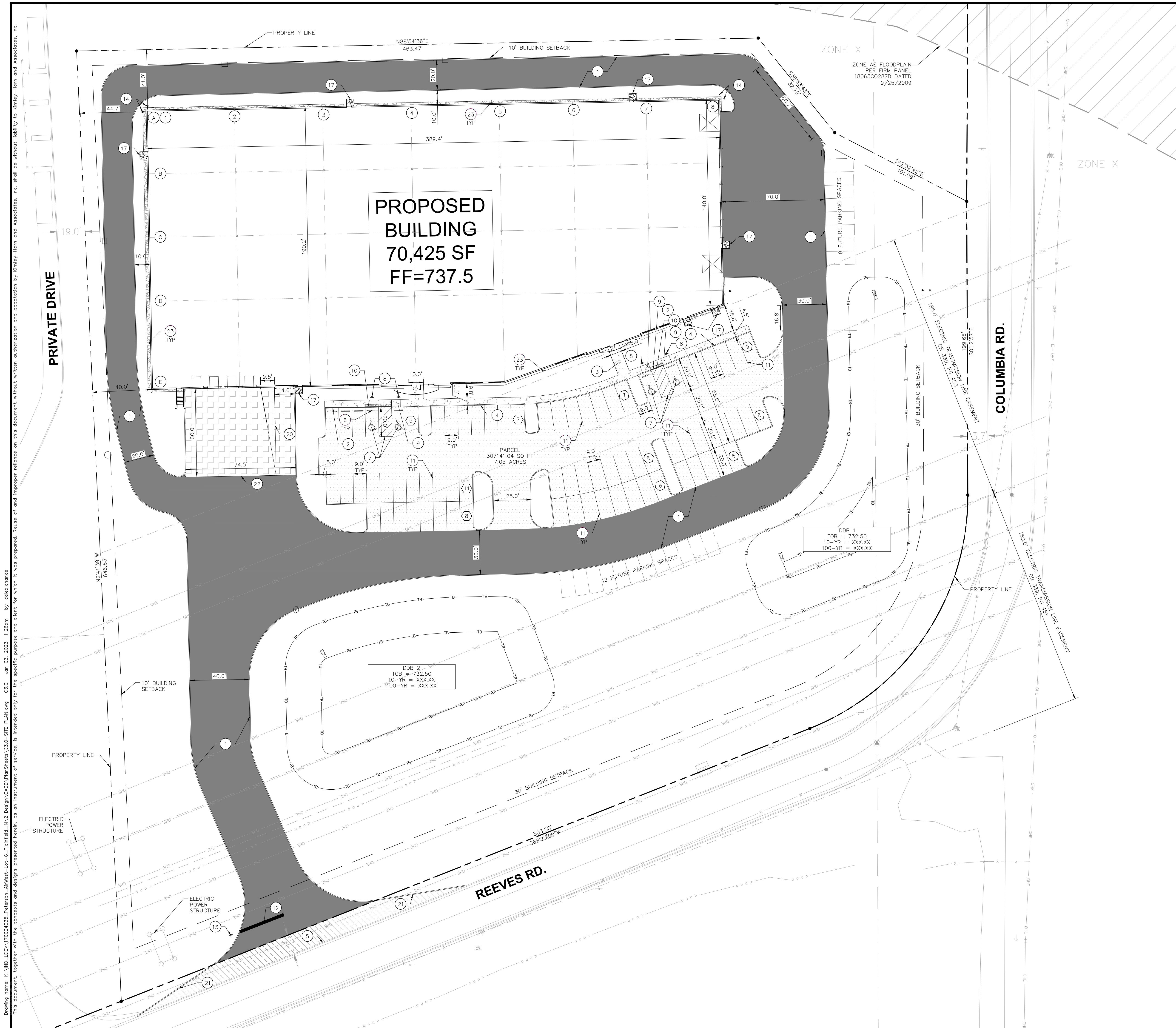
BENCHMARKS

Originating Benchmark:
 The horizontal and vertical location data shown on this survey are based upon a positional solution derived from Global Positioning System (GPS) observations. The coordinate values shown are in the Indiana State Plane Coordinate System (East Zone) reference to the 1983 North American Datum utilizing the Continuously Operating Reference Stations (CORS) adjustment as determined by NGS (NAD 83 (CORS 96)(EPOCH 2002.0000) and reported on the 1988 North American Vertical Datum (NAVD88). This orthometric elevation was computed using Geoid18.

CP 50 - N 1617475.57 E 3162677.87 Elevation - 735.80 CUT 'X'
 CP 55 - N 1618269.46 E 3163179.11 Elevation - 719.80 MAG SPIKE

GENERAL PLAN NOTES

REFER TO GENERAL NOTES SHEET FOR MORE INFORMATION INCLUDING THE FOLLOWING: (EXISTING LEGEND, BENCHMARK INFORMATION, AND SPECIFIC GENERAL PLAN NOTES.)



Drawing name: K:\IND\DEV\170024035_Peterson_Airwest-Lot-C_Planfield_IN2_Design\CADD\PlanSheet\C3.0-SITE_Plan.dwg C3.0 Jan 03, 2023 1:26pm by: caleb.chance
 This document, together with the concepts and designs presented herein, is intended only for the specific purpose and client for which it was prepared. Reuse of and improper reliance on this document without written authorization and adaptation by Kimley-Horn and Associates, Inc. shall be without liability to Kimley-Horn and Associates, Inc.

DESIGNED BY: CDC	SCALE: AS NOTED	
DRAWN BY: NPK	DATE: _____	
CHECKED BY: BAS	NO. _____	
REVISIONS:	BY _____	
SITE PLAN		
AIRWEST LOT - G		
ORIGINAL ISSUE: 2022-11-XX KHA PROJECT NO. 170024035 SHEET NUMBER C3.0		