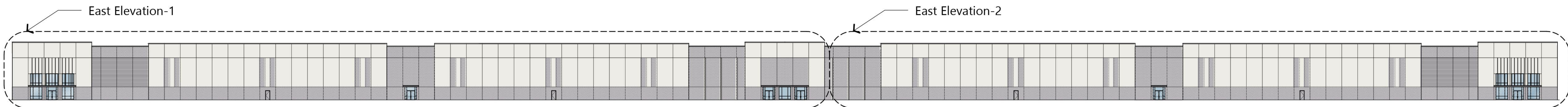
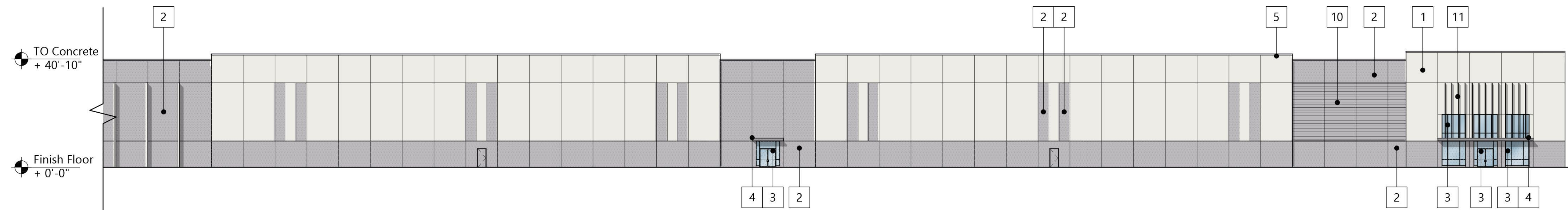
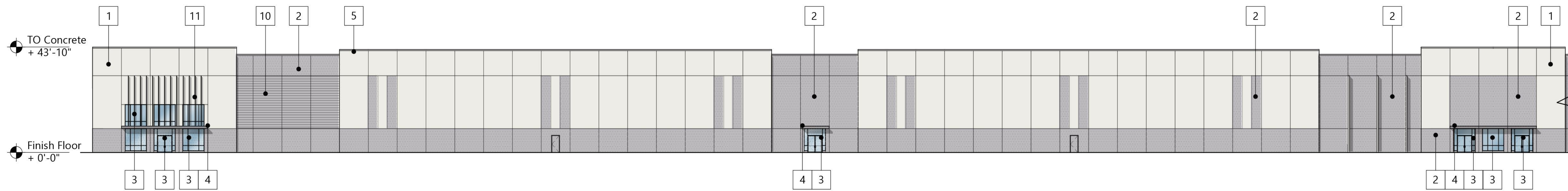
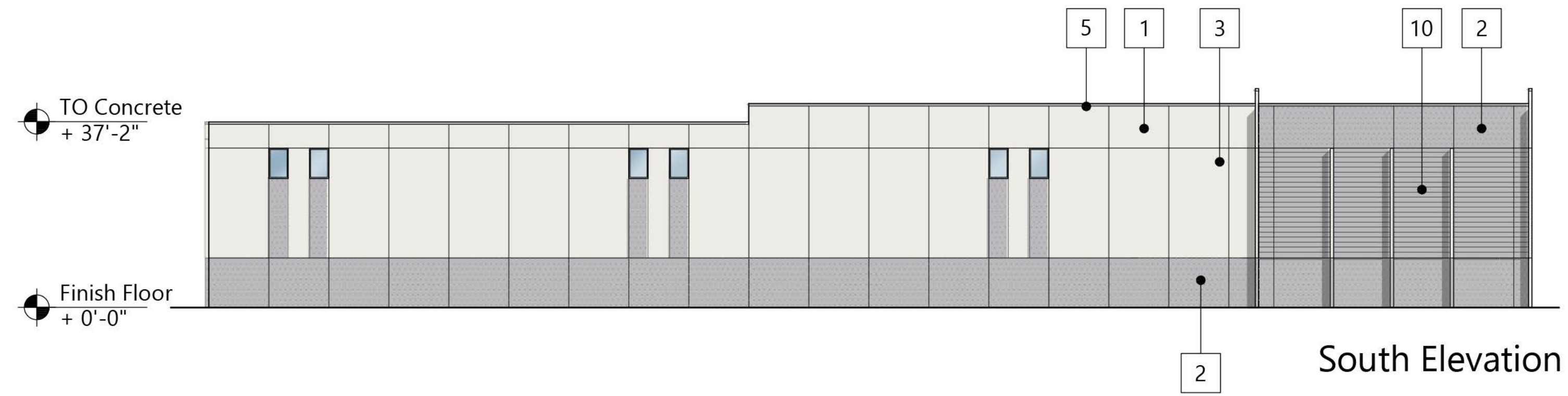


	Total Area	Area Excluding Windows, Doors, Roofing & Soffitt	Area of Exterior Building Materials of Color Uses	Percentage of Area of Each Qualifying Exterior Material
North Façade	10440	10302	Precast-Painted (Pure White) - 5463 SF	53%
			Precast-Painted (Liquorice Tint) - 4701 SF	46%
			Glazing - 138 SF	13%
East Façade	49669	48159	Precast-Painted (Pure White) - 27170 SF	56%
			Precast-Painted (Liquorice Tint) - 19579 SF	41%
			Glazing - 1410 SF	3%
South Façade	10440	10302	Precast-Painted (Pure White) - 5463 SF	53%
			Precast-Painted (Liquorice Tint) - 4701 SF	46%
			Glazing - 138 SF	1%
West Façade	45342	40536	Precast-Painted (Pure White) - 28311 SF	70%
			Precast-Painted (Liquorice Tint) - 11834 SF	29%
			Glazing - 391 SF	1%

- MATERIALS KEY:**
- Precast Concrete Panel, Painted
Color: SW Pure White
 - Precast Concrete Panel, Painted
Color: SW Liquorice Tint
 - Clear Anodized Storefront Frames with Gray Tinted Glass
 - Premanufactured Metal Canopy and Wall Attachments
 - Prefinished Metal Coping
 - Dock Door
 - Steel Door/Frame
 - Drive-In Door
 - Dock Stair/Door
 - Precast Concrete Form Liner Panel
 - Vertical Aluminum Shading Device



East Elevation Key - 1"=40'-0"

