



(NO SCALE)



Figure 6 - Franklin Park Projected Cost.

LETTER	AMENITY/CHANGE
A1	Crosswalk, Sidewalk, H/C, Accessibility & Minor Intersection Improvements
A2	Crosswalk, Sidewalk, H/C, Accessibility & Minor Intersection Improvements
B	Reconfigured & Resurfaced Parking ( <b>Crackseal / Sealcoat &amp; Striping, 15k</b> ), added drop off area
C	Resurfaced Tennis Court
D1	Franklin Park Trail Loop
D2	Franklin Park Trail Loop
E	Parking removed and Shelter House Updates
	Horseshoes Removed
F	Playground Enhancement
G1	Anderson Baseball Diamond Updates - New lights, fence, & irrigation; Updated concession stand & dugouts
G2	Anderson Baseball Diamond Updates - New batting cages
H	Existing pavement around concession stand to be removed & replaced
I1	Basketball Court moved closer to park entrance
I2	Full court basketball with side goals
J	Path to be improved/replaced to Pinnacle Lane
K	Dog Park with shade structures
L1	Parking removed, added path from restroom to concession stand
L2	Restroom Updates - redoing and enclosing the opening
M	Nature Path - dirt or wood chips
N	Shelter Houses with metal roofs
O	Expanded, Reconfigured, & Resurfaced Parking
P	Four Pickle Ball Courts
Q	Reconfigured & Resurfaced Parking for Future Trailhead
R	Community Green Space
	Restroom 2, Concession Stand 2, & Storage Building Removed
S	Fitness Playground
T	Left for DPW's use - Landscaping and fence 10 feet around buildings
	Baseball Diamonds Removed
	Landscaping
	Remove/Replace Fences
	Benches, Dog Waste Stations
U	Wood Fence
V	Future Community Artwork

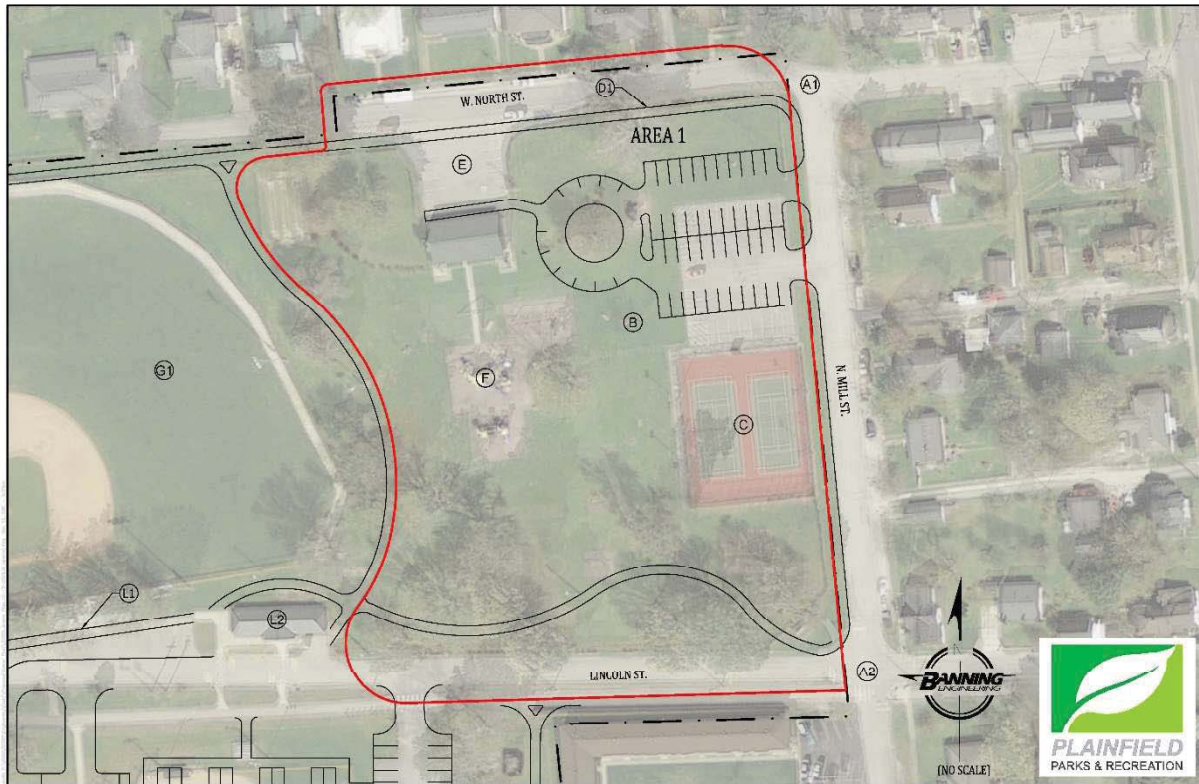


Figure 7 - Area 1.

Area 1 (Figure 7) – Area 1 improvements include expanding the parking lot near the tennis courts and adding a drop off area near the shelter house. This change will also include accessible pedestrian access to the tennis courts and shelter house (B). The shelter house parking lot would also be removed (E). Community members expressed concern for the number of tennis courts in town. Keeping and redoing the tennis courts is another proposal for this area (C). This area will also gain a trail loop running along North Mill Street and West North Street (D1). This loop will connect to the Vandalia Trail and add to the community's robust trail system. Installing enhanced playground equipment will expand play areas in the park (F). The shelter house will also undergo updates (E). The plan includes removing the horseshoes court to eliminate unnecessary parks department maintenance. Other proposals for this area are crosswalk, sidewalk, handicap accessibility, and minor intersection improvements for the West North Street/North Mill Street intersection (A1) and the Lincoln Street/North Mill Street intersection (A2).

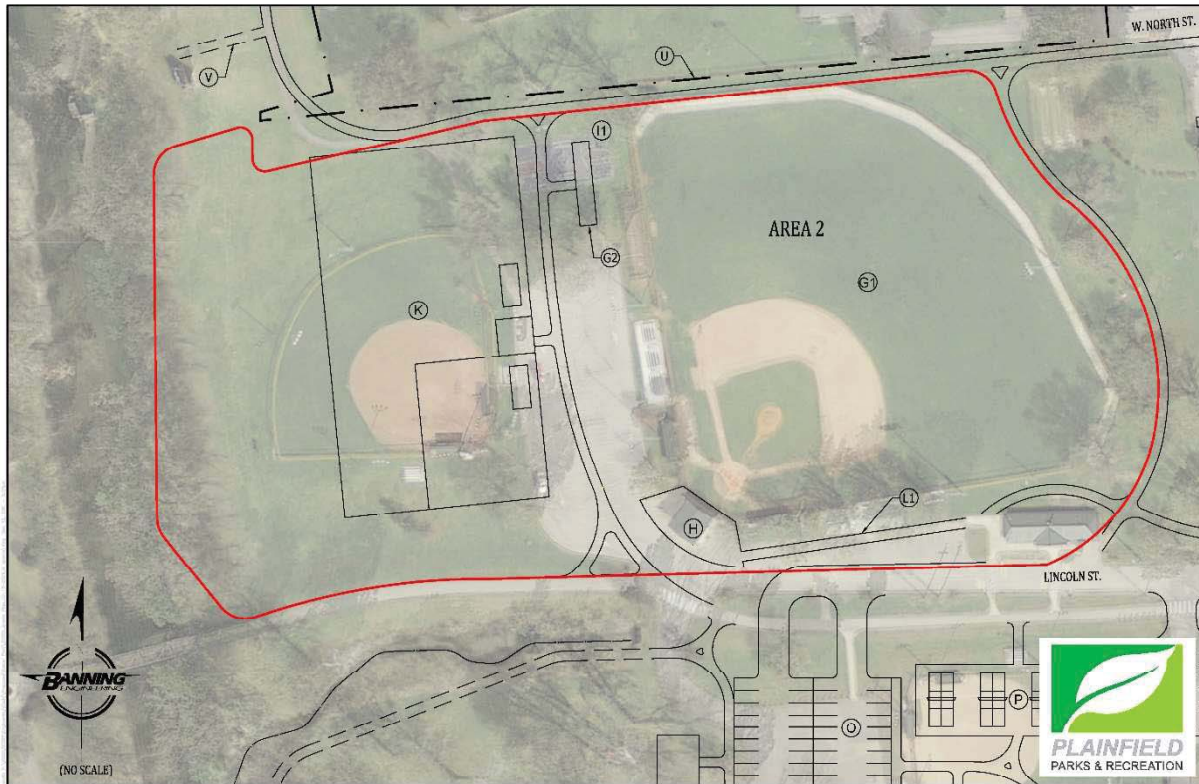


Figure 8 - Area 2.

Area 2 (Figure 8) – After moving the Pee Wee Diamonds to the community sports complex, the plan shows the removal of Diamond 2 from Area 2. Other updates in this area include removing the existing pavement along Lincoln Street and installing a sidewalk from the restroom to the concession stand area (L1). The existing pavement around the concession stand will also be removed and replaced (H). Redoing and enclosing the opening on the restroom will add storage space for the parks department (L2). Updating the restroom enhances the facilities for park and trail users (L2). For improved security, the plan proposes moving the basketball court to Area 3 (I1). With limited access to a dog park, adding one to this area offers surrounding residents a place to walk their dogs. The proposal shows a dog park with shade structures and defined spaces for small and large dogs (K). The trail into Ridgeline Estates is unsafe for bicycle traffic and does not meet trail standards. The proposal shows an improved/replaced path to Pinnacle Lane (J). A proposed nature path extends from the trail and highlights the Vandalia Railroad’s history with a plaque and through public art (V). The remaining three abutments could feature a mural painted by local community members and organizations. This path would also provide beautiful views of White Lick Creek. Removing the baseball parking lot adds green space and eliminates safety hazards when visiting the Anderson Baseball Diamond and proposed dog park. Anderson Baseball Diamond improvements include – new lights, removing and fixing the water main under the diamond, replacing the fence, adding irrigation, updating the concession stand, and building new dugouts (G1). The plan also proposes a new batting cage (G2). Adding a fence between the trail loop and the park’s northern boundary defines the space between public and private property (U). A fence row also clears confusion for property maintenance and would match the existing wood fences in the park.

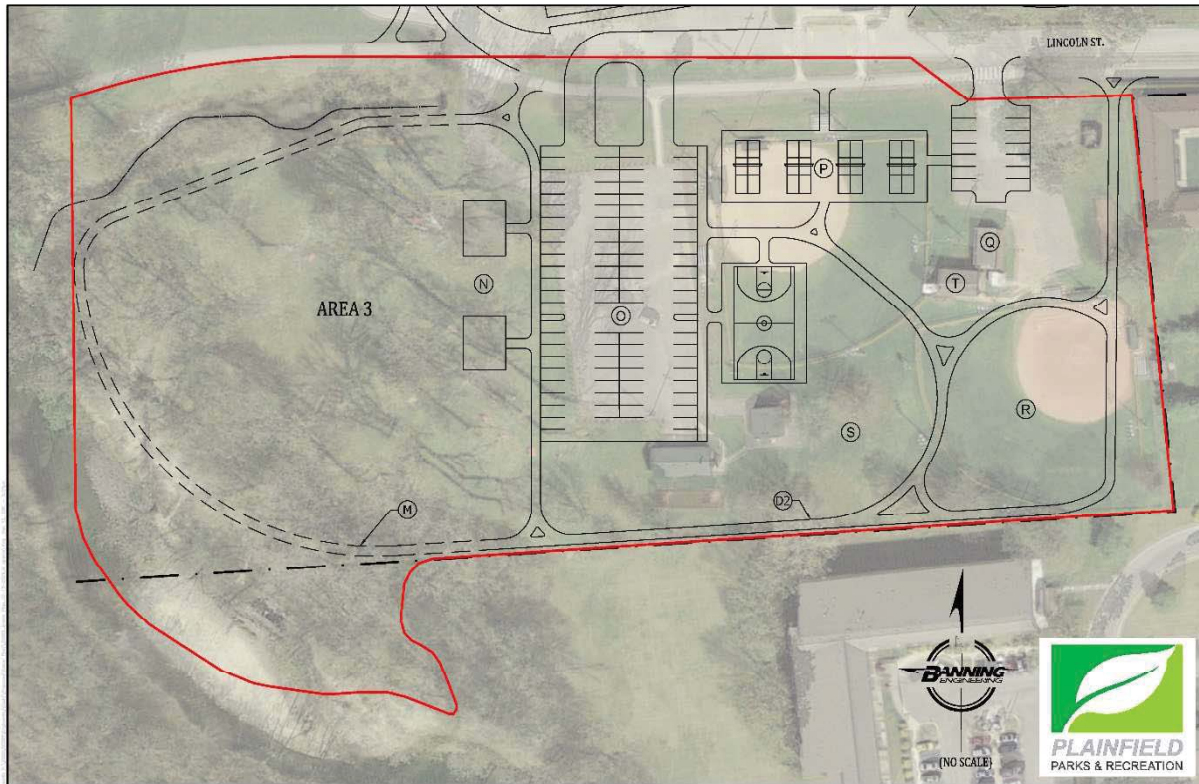


Figure 9 - Area 3.

Area 3 (Figure 9) – After moving the Pee Wee Diamonds to the community sports complex, the plan shows the removal of Diamond 3 and 4 from Area 3. Removing the Pee Wee Diamonds permits the removal of the concession stand, restroom, and storage building as well. Additional changes to Area 3 include expanding, reconfiguring, and resurfacing the existing parking lot (O). Parking updates create a central parking area and eliminate expressed safety concerns. The proposal adds a full basketball court with side goals (I2). Having the basketball court in this area minimizes safety concerns. The basketball court sitting closer to the road provides clear views from Lincoln Street. Many community members noted their desire for more pickleball courts in Plainfield. This area includes the addition of four pickleball courts (P). Because the existing well house must remain in the park, surrounding the structure with fencing and landscaping will revamp the structure and still serve its function (T). The trail loop follows the southern boundary and prepares a potential connection to a pedestrian corridor to Downtown along White Lick Creek (D2). Like Area 1, the loop connects with the Vandalia Trail. The Downtown Redevelopment Plan notes a trailhead where current parking sits. Reconfiguring, crack sealing, and striping this parking lot will prepare for future trailhead improvements (Q). A nature trail through the park’s tree-covered picnic area exposes users to the beautiful green space within the park (M). Two proposed pole barn shelter houses sit in the wooded picnic area and offer space for family and community gatherings (N). Where Diamond 4 once stood is a proposed community green space (R). This green space aligns with the Downtown Redevelopment Plan and could offer a space for holding future community events. The remaining green space in this Area 3 features a Kompan Fitness Playground (S).

General – General proposals within Franklin Park are improvements that pertain to multiple areas. One recommendation includes replacing and adding fences. Planning for a fee for engineering, surveying, and observation is another significant step to addressing the comments above. Landscaping updates should also be implemented as required. Adding safety elements like security cameras and lighting features will further eliminate safety concerns. Including art and water features throughout the park add value to cultural and aesthetic vitality in the community. Similarly, wayfinding signage defines and brands Franklin Park while also directing users. Including benches throughout allow for resting and engaging with nature; and adding a dog waste station limits the amount of waste in the area. The approximate number of parking spaces compared to the proposed number of parking spaces in each area can be found in Figure 10.

**EXISTING PARKING**

Area in the Park	Approximate Number of Spaces
Tennis Court Parking	25
Shelter House Parking	13
Diamond 1 Parking	52
Bathroom Parking	19
Diamond 3/4 Parking	19
Greenspace Parking	61
Total	189

**PROPOSED PARKING**

Area in the Park	Proposed Number of Spaces
Tennis Court Parking (B)	44
<del>Shelter House Parking (E)</del>	0
<del>Diamond 1 Parking</del>	0
<del>Bathroom Parking</del>	0
Future Trailhead Parking (Q)	14
Greenspace Parking (O)	88
Total	146

*Figure 10 - Parking Comparison*

**Next Steps**

The next steps include presenting the Master Plan and receiving approval from the Plan Commission. Once approved, determine the project's phasing, and prepare construction plans for implementation.