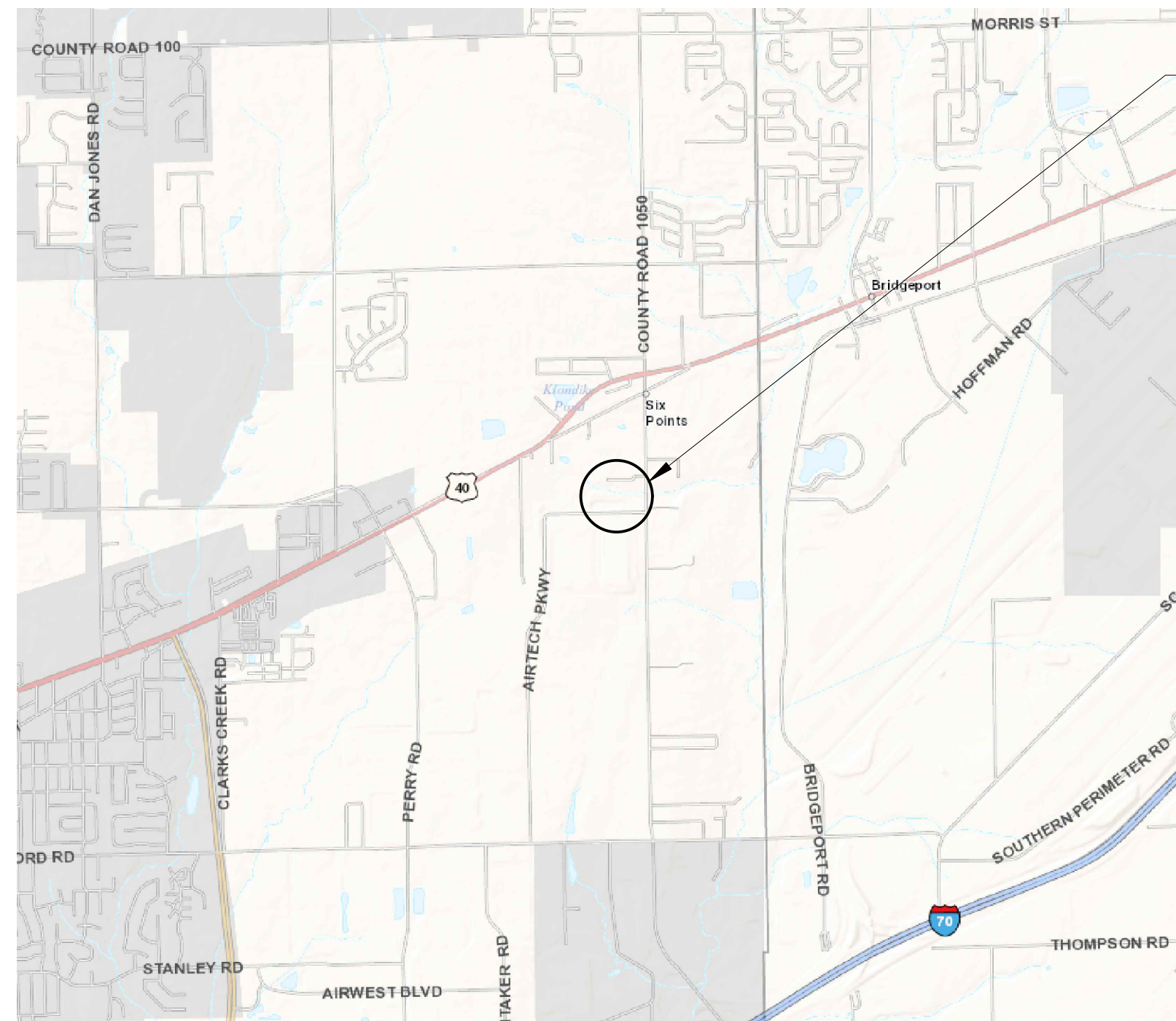


DEVELOPMENT PLAN

ROYAL TRANSPORTATION

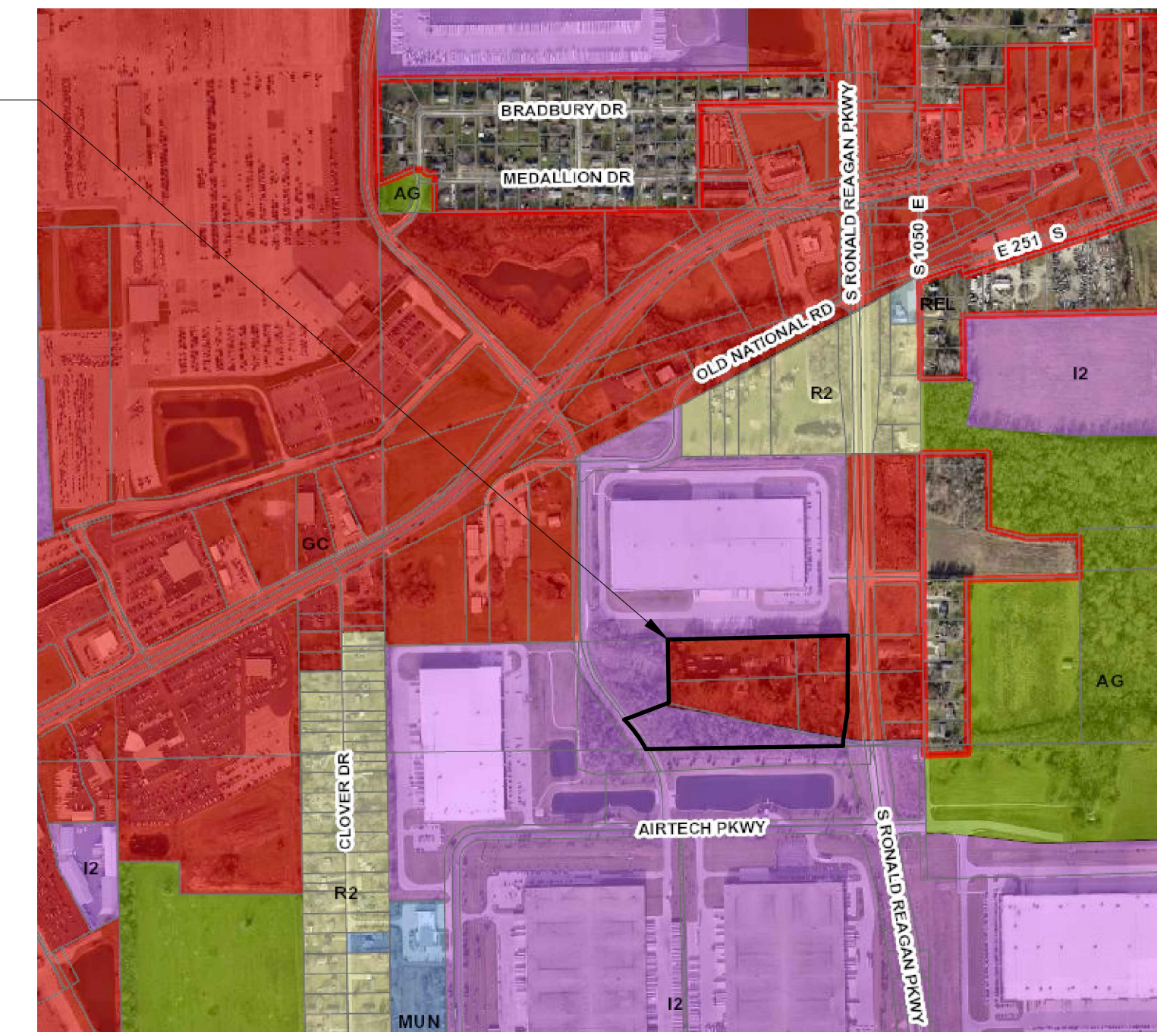
SW 1/4, SEC. 20 - T15N - R2E, HENDRICKS COUNTY, WASHINGTON TOWNSHIP, PLAINFIELD, INDIANA
 PROJECT ADDRESSES: 2924,2938,2940,2942 S. RONALD REAGAN PARKWAY
 ZONED: GC & R1

PLANS PREPARED FOR:
 ROYAL TRANSPORTATION
 2938 S. RONALD REAGAN PARKWAY
 INDIANAPOLIS, IN 46231
 (317)-777-1639
 CONTACT: ANN BURKETT
 EMAIL: annb.royallimo@yahoo.com



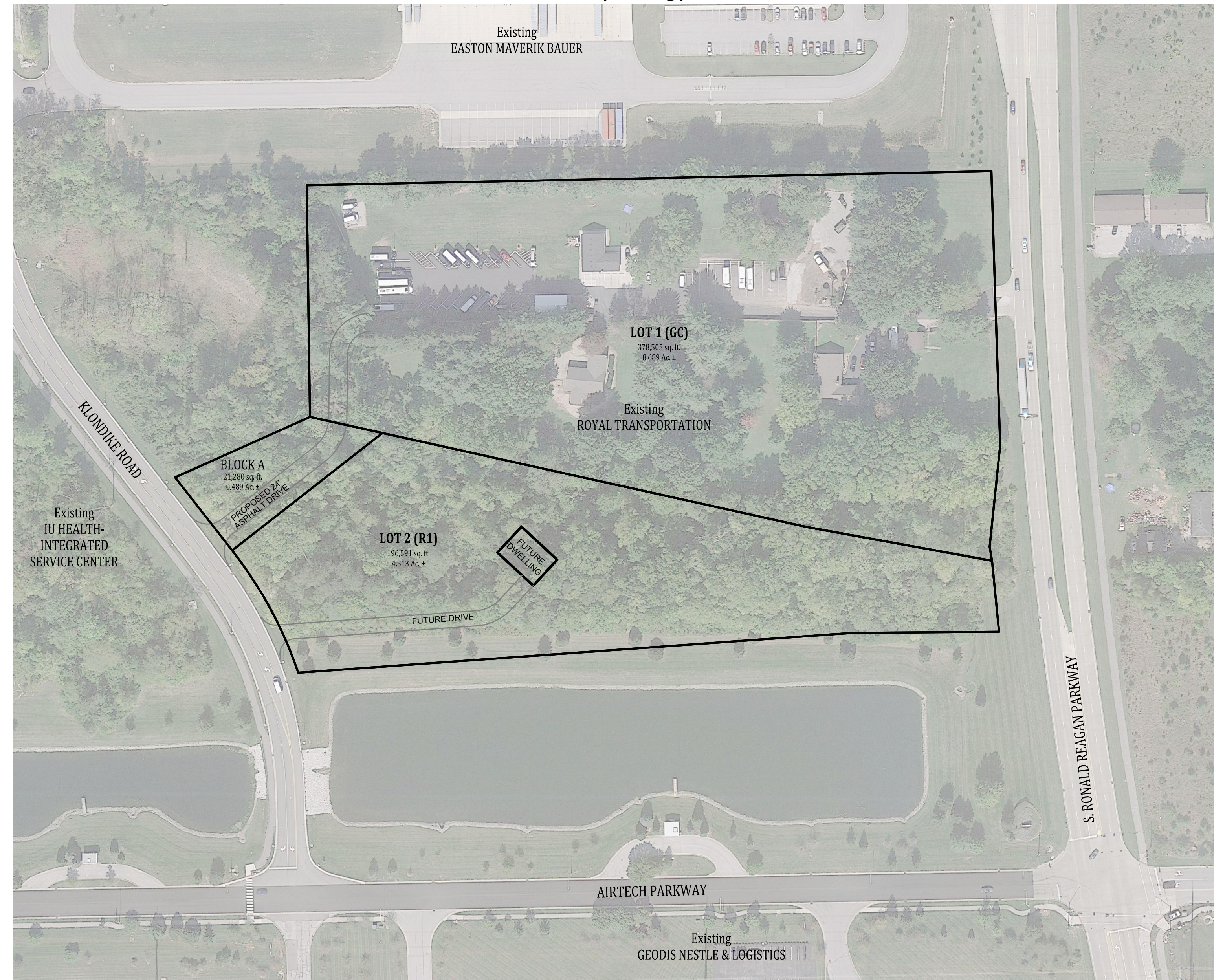
PROJECT LOCATION

VICINITY MAP
NO SCALE



PROJECT LOCATION

LOCATION MAP
NO SCALE



SITE MAP
SCALE: 1" = 100'

OPERATING AUTHORITIES

GAS Centerpoint Energy 1995 East Main St. Danville, IN 46112 317-718-3618	CABLE TELEVISION Bright House Networks 3030 Roosevelt Ave. Indianapolis, IN 46218 317632-9077	WATER Town of Plainfield 986 S. Center Street Plainfield, IN 46168 317-839-3490
ELECTRIC Duke Energy 390 N. Main Street Martinsville, IN 46151 765-349-4012	CABLE TELEVISION Comcast Cable 5330 E. 65th St. Indianapolis, IN 46220 317-872-2225	TELEPHONE AT&T 240 N. Meridian St. Indianapolis, IN 46204 317-265-3050
ELECTRIC AES Indiana 2102 N. Illinois Street Indianapolis, IN 46202 888-261-8222	STORM Town of Plainfield 986 S. Center Street Plainfield, IN 46168 317-839-3490	FIRE DEPARTMENT Plainfield Fire Territory 591 Moon Road Plainfield, IN 46168 317-839-6939
FIBER OPTIC MCI 400 Internation Pkwy Richardson, TX 75081 469-886-4238	SANITARY Town of Plainfield 986 S. Center Street Plainfield, IN 46168 317-839-3490	FIBER OPTIC TCS Communications, LLC 4355 Lafayette Blvd. Indianapolis, IN 46254 812-623-1233
SCHOOL DISTRICT Plainfield Community School Corporation 985 S. Longfellow Lane Plainfield, IN 46168 317-839-2578	SCHOOL DISTRICT Avon Community School Corporation 7203 East U.S. Highway 36 Avon, IN 46123 317-544-6000	

PLANS PREPARED BY:
BANNING ENGINEERING
 853 COLUMBIA ROAD, SUITE #101
 PLAINFIELD, IN 46168
 BUS: (317) 707-3700, FAX: (317) 707-3800
 E-MAIL: Banning@BanningEngineering.com
 WEB: www.BanningEngineering.com
 CONTACT: RYAN LINDLEY
 EMAIL: rlindley@banning-eng.com

NOT FOR CONSTRUCTION

CERTIFIED BY: _____

REVISIONS			SHEET INDEX	
NUMBER	DESCRIPTION	DATE	SHEET NO	DESCRIPTION
			C100	TITLE SHEET
			C101	EXISTING TOPOGRAPHY
			C102	DEVELOPMENT PLAN
			C103	UTILITY PLAN

Date: 11-15-2022
 Project No: 22078
 Sheet No:
C100



