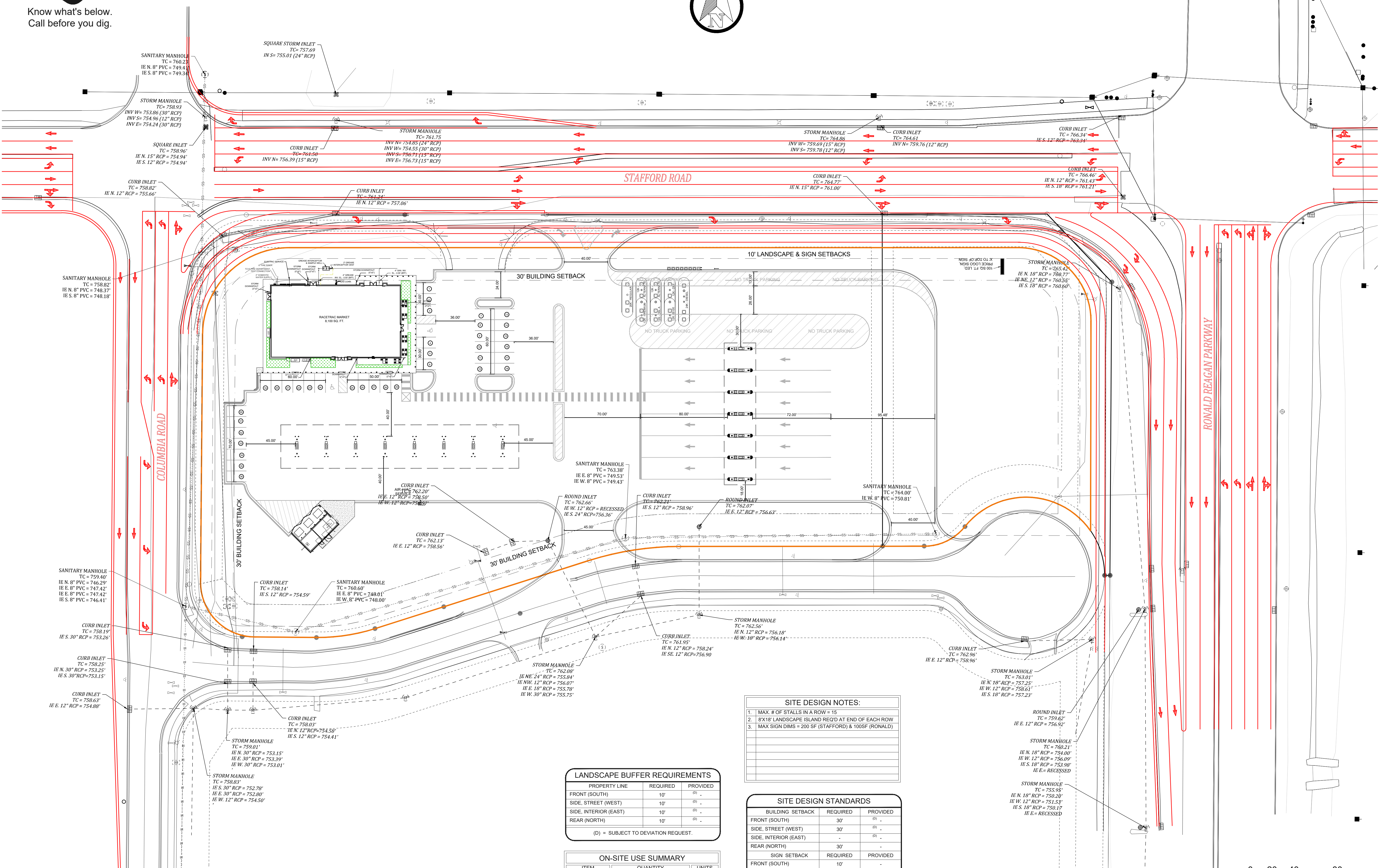
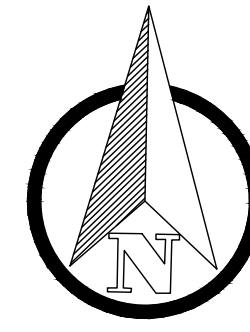




Know what's below.
Call before you dig.



CONTACT RACETRAC PETROLEUM, INC. PROJECT MANAGER PRIOR TO ANY REVISIONS TO THE PLAN SUPPLIED BY RACETRAC PETROLEUM, INC.

LANDSCAPE BUFFER REQUIREMENTS

PROPERTY LINE	REQUIRED	PROVIDED
FRONT (SOUTH)	10'	(D)
SIDE, STREET (WEST)	10'	(D)
SIDE, INTERIOR (EAST)	10'	(D)
REAR (NORTH)	10'	(D)

(D) = SUBJECT TO DEVIATION REQUEST.

ON-SITE USE SUMMARY

ITEM	QUANTITY	UNITS
6" CONCRETE	47,394	FT ²
8" CONCRETE	81,301	FT ²
CURB	2,779	LF

SITE DESIGN NOTES:

- MAX. # OF STALLS IN A ROW = 15
- 8'X18' LANDSCAPE ISLAND REQ'D AT END OF EACH ROW
- MAX SIGN DIMS = 200 SF (STAFFORD) & 100SF (RONALD)

SITE DESIGN STANDARDS

BUILDING SETBACK	REQUIRED	PROVIDED
FRONT (SOUTH)	30'	(D)
SIDE, STREET (WEST)	30'	(D)
SIDE, INTERIOR (EAST)	-	(D)
REAR (NORTH)	30'	-

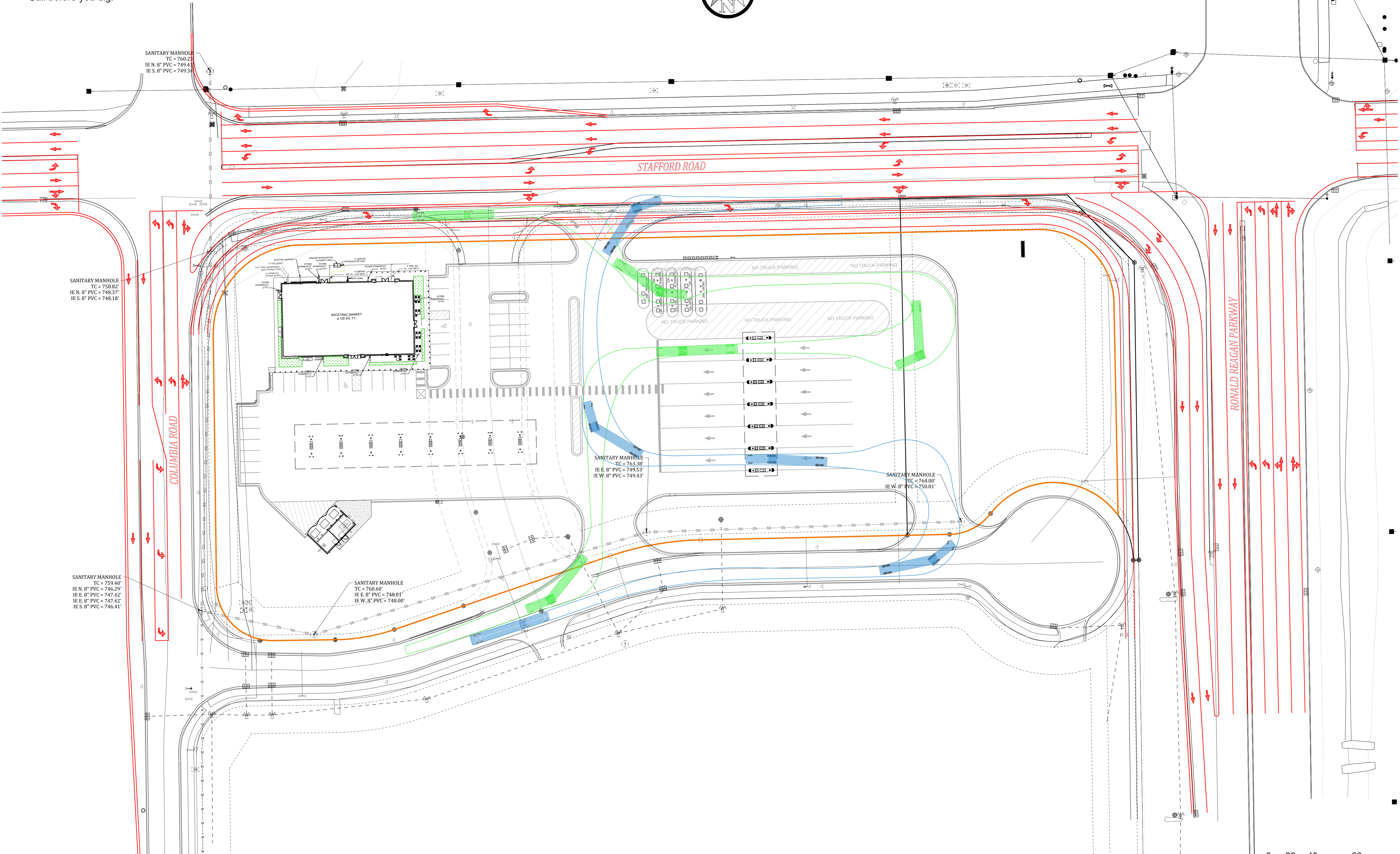
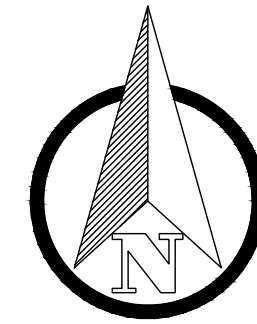
SIGN SETBACK	REQUIRED	PROVIDED
FRONT (SOUTH)	10'	-
SIDE, STREET (WEST)	10'	-

(D) = SUBJECT TO DEVIATION REQUEST.

<p>THESE PLANS ARE SUBJECT TO FEDERAL COPYRIGHT LAWS. ANY USE OF SAME WITHOUT THE EXPRESSED PERMISSION OF RACETRAC PETROLEUM, INC. IS PROHIBITED.</p> <p>RaceTrac</p> <p>RACETRAC PETROLEUM, INC. 10000 W. 10TH AVENUE SUITE 900 ATLANTA, GA 30359 (770) 431-7600</p>	<p>SITE PLAN</p> <p>1521 - PLAINFIELD</p> <p>RONALD REAGAN @ STAFFORD PLAINFIELD, IN HENDRICKS COUNTY</p> <p>DATE: 4/23/2024 SCALE: 1" = 40' DRAWING NAME: 1521 - RT18.9K(TC)PLAINFIELD V15.dwg</p>
<p>DATE</p>	<p>NO.</p>
<p>SHEET NO.</p>	<p>VERSION</p>



Know what's below.
Call before you dig.



SANITARY MANHOLE
TC = 760.23'
IE N. 8" PVC = 749.44'
IE S. 8" PVC = 749.34'

SANITARY MANHOLE
TC = 758.82'
IE N. 8" PVC = 748.37'
IE S. 8" PVC = 748.18'

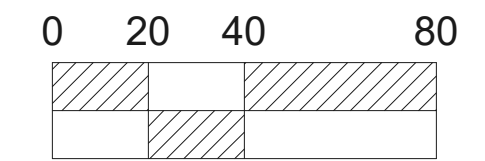
SANITARY MANHOLE
TC = 759.40'
IE N. 8" PVC = 746.29'
IE E. 8" PVC = 747.42'
IE E. 8" PVC = 747.42'
IE S. 8" PVC = 746.41'

SANITARY MANHOLE
TC = 760.60'
IE E. 8" PVC = 748.01'
IE W. 8" PVC = 748.00'

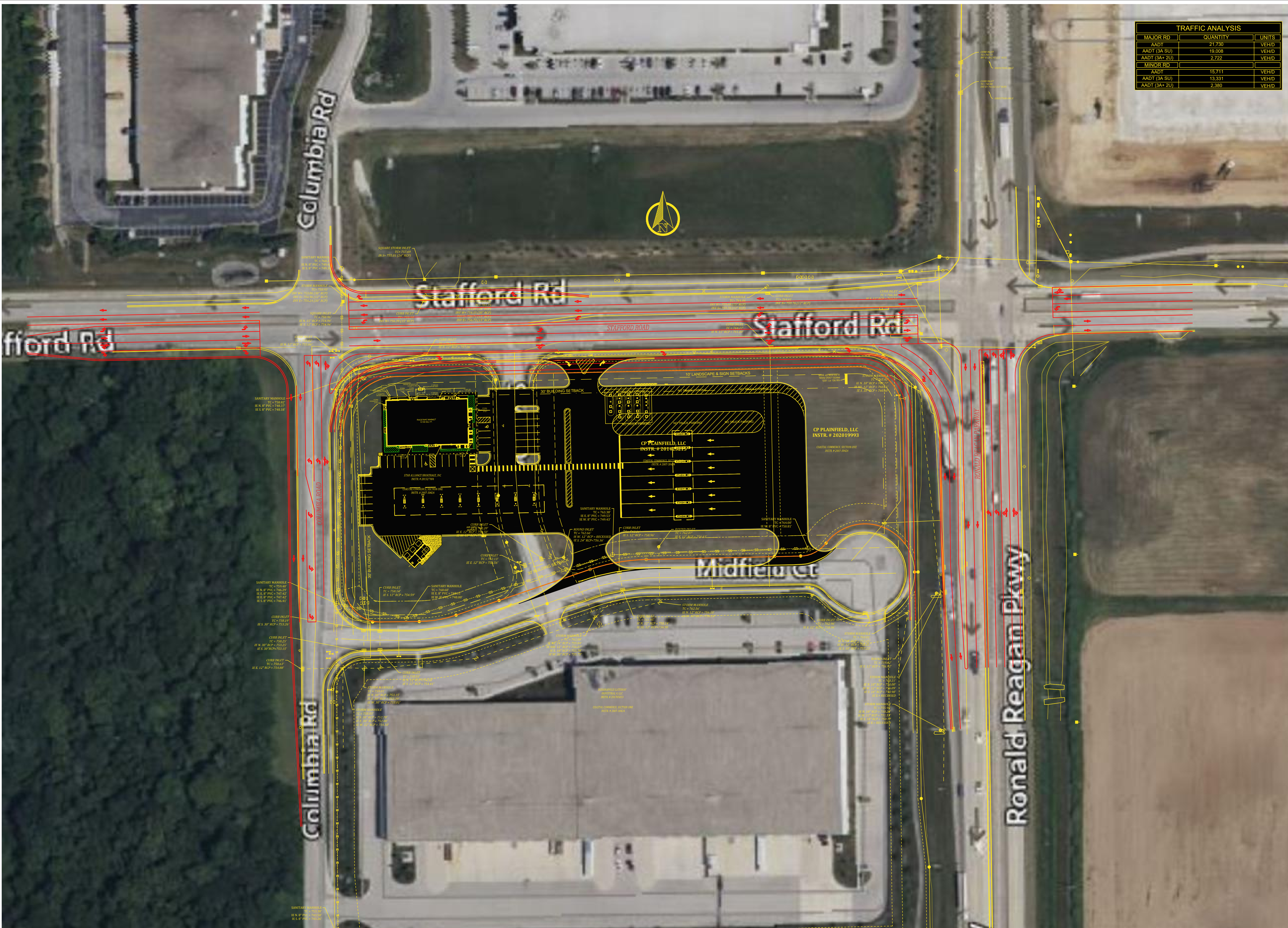
SANITARY MANHOLE
TC = 763.38'
IE E. 8" PVC = 749.53'
IE W. 8" PVC = 749.43'

SANITARY MANHOLE
TC = 764.00'
IE W. 8" PVC = 750.81'


CONTACT RACETRAC PETROLEUM, INC. PROJECT MANAGER PRIOR TO ANY REVISIONS TO THE PLAN SUPPLIED BY RACETRAC PETROLEUM, INC.



<p>THESE PLANS ARE SUBJECT TO FEDERAL COPYRIGHT LAWS. ANY USE OF SAME WITHOUT THE EXPRESSED WRITTEN PERMISSION OF RACETRAC PETROLEUM, INC. IS PROHIBITED.</p>	
<p>RACETRAC PETROLEUM, INC. 1521 - PLAINFIELD PLAINFIELD, IN HENDRICKS COUNTY</p>	
<p>1521 - RT18.9K(TC) PLAINFIELD V5.dwg</p>	
<p>DATE 4/23/2024</p>	<p>NO.</p>
<p>SCALE 1" = 40'</p>	<p>DATE</p>
<p>DRAWN-BY AWONG</p>	<p>NO.</p>
<p>SHEET NO.</p>	<p>VERSION</p>



TRAFFIC ANALYSIS		
MAJOR RD	QUANTITY	UNITS
AADT	21,730	VEHD
AADT (3A SU)	19,008	VEHD
AADT (3A+ 2U)	2,722	VEHD
MINOR RD		
AADT	15,711	VEHD
AADT (3A SU)	13,331	VEHD
AADT (3A+ 2U)	2,380	VEHD

	DATE
	NO.
<p>THESE PLANS ARE SUBJECT TO FEDERAL COPYRIGHT LAWS. ANY USE OF SAME WITHOUT THE EXPRESSED WRITTEN PERMISSION OF RACETRAC PETROLEUM, INC. IS PROHIBITED.</p>	
	<p>RACETRAC PETROLEUM, INC. 10000 W. 14TH AVENUE SUITE 300, ATLANTA, GA 30339 (770) 531-7600</p>
<p>SITE PLAN 1521 - PLAINFIELD</p>	<p>RONALD REAGAN @ STAFFORD PLAINFIELD, IN HENDRICKS COUNTY</p>
<p>DRAWN-BY: AWONG DATE: 4/23/2024 SCALE:</p>	
<p>DRAWING NAME: 1521 - RTB.0K(TC) PLAINFIELD V03.dwg</p>	
SHEET NO.	VERSION