

PROPOSED BUILDING  
70,425 SF  
FFE=736.50

ZONE X  
ZONE AE FLOODPLAIN  
PER FIRM PANEL  
18063C02870 DATED  
9/25/2009

### GRADING LEGEND

- XXXXXX FINISHED GRADE SPOT ELEVATION
- TC XXXX TOP OF CURB / BOTTOM OF CURB SPOT ELEVATION
- BC XXXX
- FL XXXX FLOW LINE SPOT ELEVATION
- ME XXXX MATCH EXISTING SPOT ELEVATION
- FF XXXX FINISHED FLOOR SPOT ELEVATION
- FG XXXX FINISHED GRADE NEAR BUILDING SPOT ELEVATION
- TW XXXX TOP OF WALL SPOT ELEVATION
- BW XXXX BOTTOM OF WALL SPOT ELEVATION
- R XXXX RIM ELEVATION
- STR XX STRUCTURE ID & RIM ELEVATION
- STR XX INV XXXX STRUCTURE ID & INVERT ELEVATION
- 620 PROPOSED CONTOUR
- RIDGE RIDGE LINE
- XXXS SLOPE AND FLOW DIRECTION
- 100-YEAR OVERFLOW ROUTE
- DETENTION BASIN 100-YEAR EMERGENCY
- PROPOSED SWALE
- PROPOSED STORM SEWER
- PROPOSED STORM STRUCTURES
- PROPOSED SANITARY MANHOLE
- PROPOSED STORM/SANITARY CLEANOUT
- PROPOSED WATER STRUCTURES
- PROPOSED LIGHT POLES
- PROPOSED TRANSFORMER PAD

### EXISTING LEGEND

- BOLLARD
- CONTROL BENCHMARK
- ROW MONUMENT
- FLAG POLE
- MAIL BOX
- UTILITY POLE
- POST
- SOIL BORING
- HANDICAP SYMBOL
- SIGN
- CABLE MANHOLE
- CABLE PEDESTAL
- TELEPHONE PEDESTAL
- TELEPHONE HAND HOLE
- TELEPHONE MARKER
- TELEPHONE MANHOLE
- FIBER OPTIC MAKER
- SWALE
- FENCE LINE
- SANITARY SEWER
- STORM DRAIN
- WATER LINE
- TREE LINE
- MISC LID
- MONITOR WELL
- GAS MARKER
- GAS METER
- GAS VALVE
- AC UNIT
- AREA LIGHT
- ELECTRICAL BOX
- ELECTRICAL HAND HOLE
- ELECTRICAL METER
- ELECTRICAL MANHOLE
- ELECTRICAL MARKER
- ELECTRICAL TRANSFORMER
- GUY POLE/WIRE
- POWER POLE
- TRAFFIC SIGNAL POLE
- TRAFFIC MANHOLE
- TOE OF SLOPE
- YARD LIGHT
- SANITARY CLEANOUT
- SANITARY MANHOLE
- VENT PIPE
- STORM CURB INLET
- STORM INLET
- STORM ROOF DRAIN
- STORM DRAIN MANHOLE
- STORM YARD MANHOLE
- FIRE HYDRANT
- FIRE DEPT CONNECTION
- IRRIGATION VALVE
- POST INDICATOR VALVE
- WELL
- WATER METER
- WATER VALVE
- TREE / STUMP
- TS TOP OF BANK
- UNDERGROUND FIBER OPTIC
- OVERHEAD ELECTRICAL
- UNDERGROUND GAS
- UNDERGROUND TELEPHONE

### BENCHMARKS

Originating Benchmark:  
The horizontal and vertical location data shown on this survey are based upon a positional solution derived from Global Positioning System (GPS) observations. The coordinate values shown are in the Indiana State Plane Coordinate System (East Zone) reference to the 1983 North American Datum utilizing the Continuously Operating Reference Stations (CORS) adjustment as determined by NGS (NAD 83 (CORS 96) EPOCH 2002.0000) and reported on the 1988 North American Vertical Datum (NAVD88). This orthometric elevation was computed using Geoid18.

CP 50 - N 1617475.57 E 3162677.87 Elevation - 735.80 CUT 'X'  
CP 55 - N 1618269.46 E 3163179.11 Elevation - 719.80 MAG SPIKE

### GENERAL PLAN NOTES

REFER TO GENERAL NOTES SHEET FOR MORE INFORMATION INCLUDING THE FOLLOWING: (EXISTING LEGEND, BENCHMARK INFORMATION, AND SPECIFIC GENERAL PLAN NOTES.)

AS NOTED  
DESIGNED BY CDC  
DRAWN BY: NPK  
CHECKED BY: BAS

**Kimley-Horn**  
250 EAST 96TH STREET, SUITE 550,  
INDIANAPOLIS, IN 46240  
WWW.KIMLEY-HORN.COM

**BRYAN ALLEN S.**  
REGISTERED PROFESSIONAL ENGINEER  
NOT APPROVED FOR CONSTRUCTION

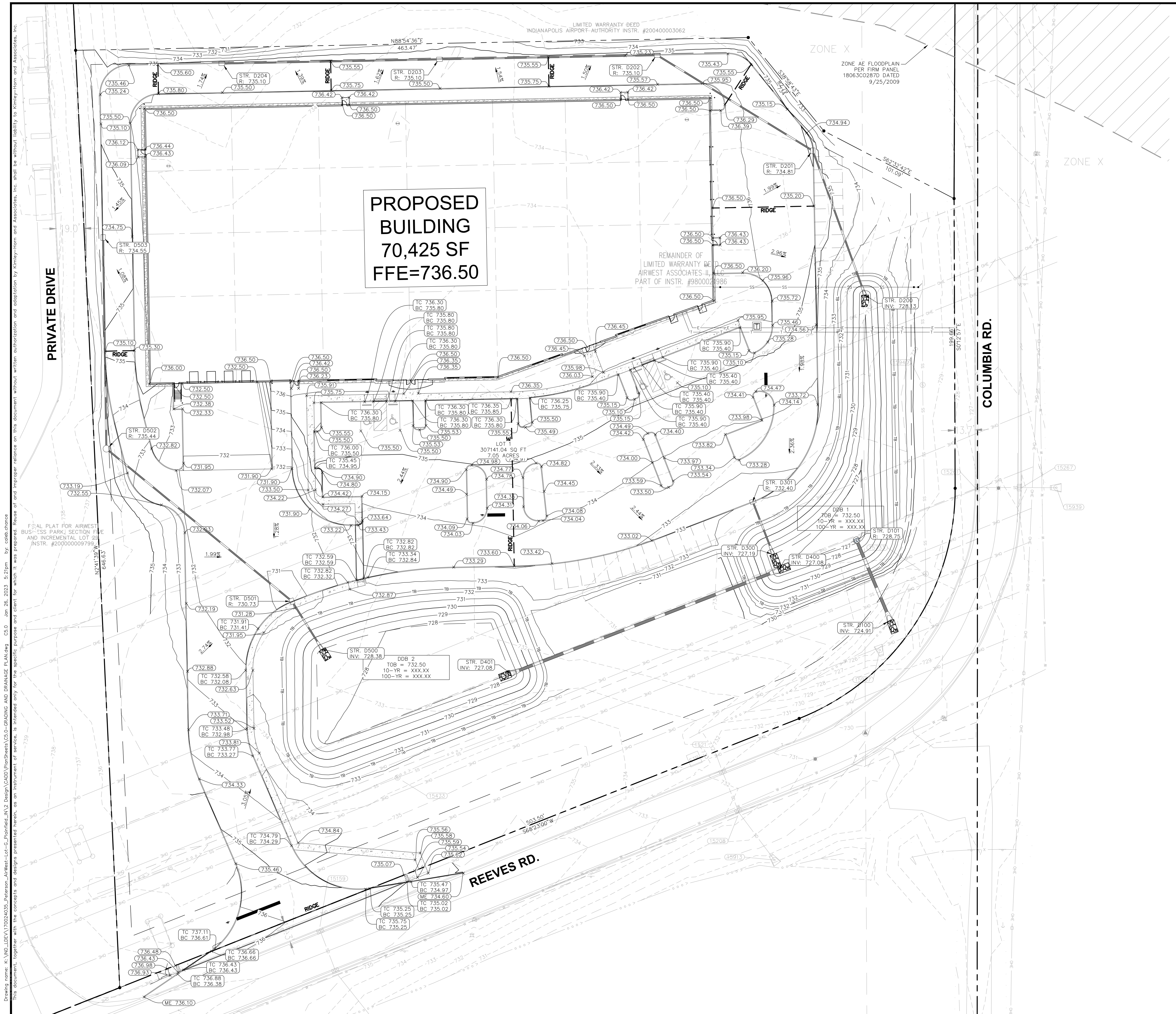
**PETERSON**

**GRADING AND DRAINAGE PLAN**

**AIRWEST LOT - G**

3100 REEVES RD., PLAINFIELD, IN 46168

ORIGINAL ISSUE:  
2023-01-26  
KHA PROJECT NO.  
170024035  
SHEET NUMBER  
**C5.0**



Drawing name: K:\INDO\DEV\170024035\_Peterson\_Airwest-Lot-G\_Planfiled\_INV2\_Design\CAD\DrawSheets\C5.0-GRADING AND DRAINAGE PLAN.dwg C5.0 Jan 26, 2023 5:21pm by: cerebarcher  
 This document, together with the concepts and designs presented herein, is intended only for the specific purpose and client for which it was prepared. Reuse of and improper reliance on this document without written authorization and adaptation by Kimley-Horn and Associates, Inc. shall be without liability to Kimley-Horn and Associates, Inc.