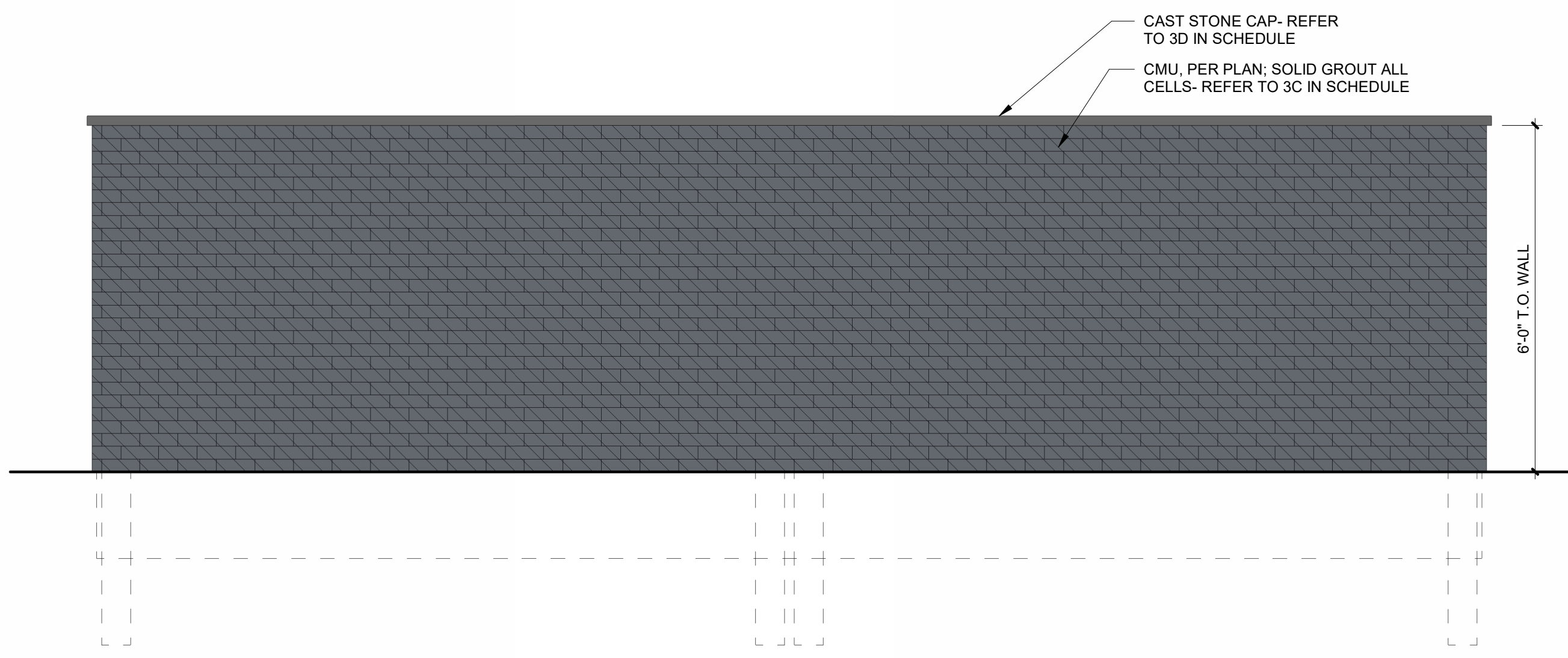


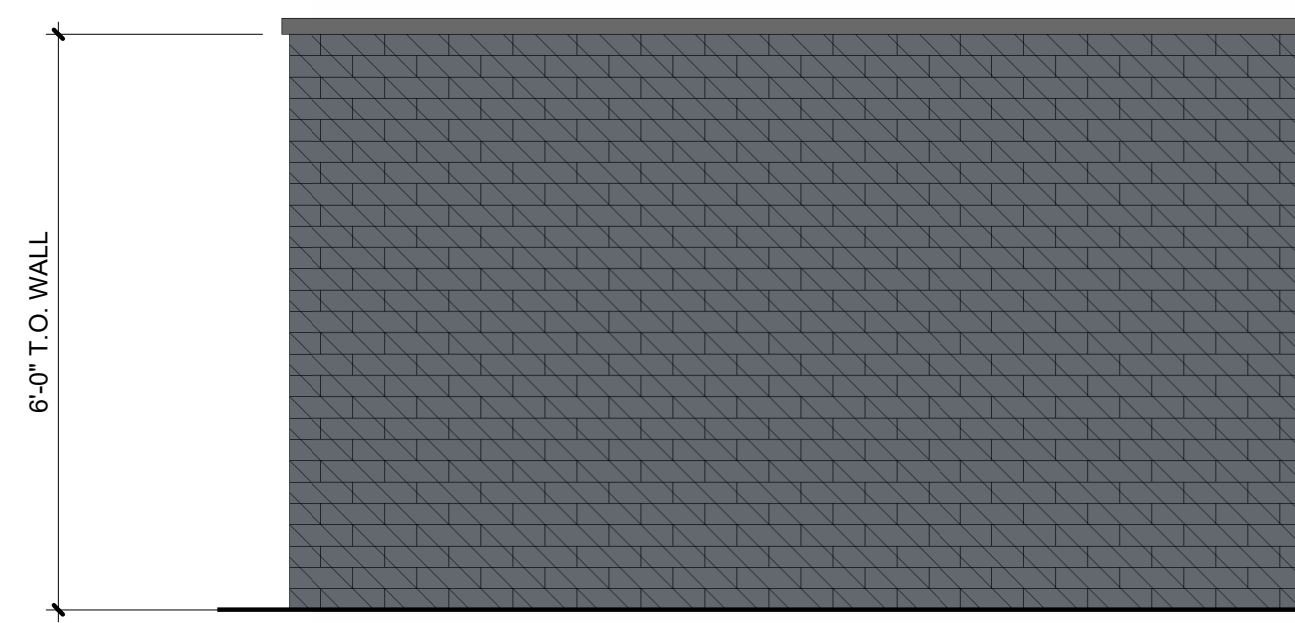
The name DUTCHBROS and all associated logos, distinctive designs, content, information, and other materials featured, displayed, contained herein, and made available by Dutch Bros, including but not limited to, the "hook and leaf" of the establishments and products, all text, images, colors, configurations, graphics, designs, illustrations, photographs, and pictures (collectively, the "Materials") are owned by and/or licensed by DB Franchising USA, LLC and are protected by copyright, trademark, trade dress, patent, and/or other intellectual property rights and under competition laws under the United States and foreign laws.



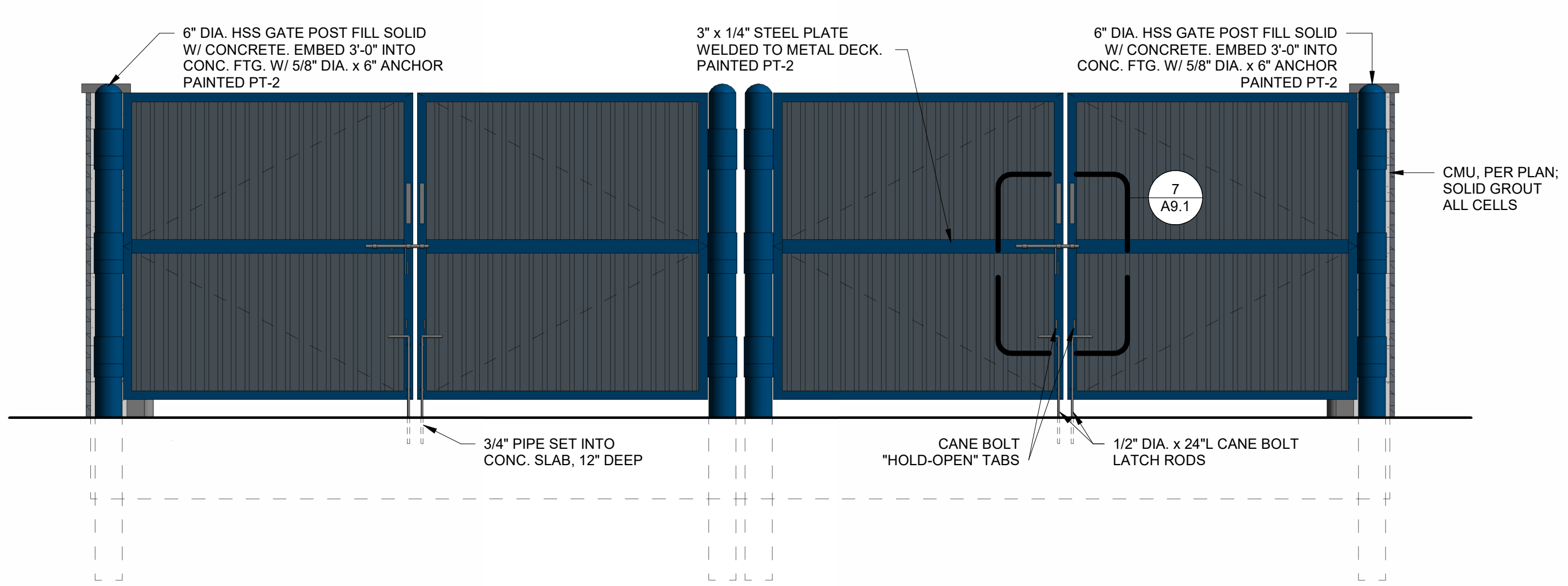
5 TRASH ENCLOSURE
1/2" = 1'-0"



4 TRASH ENCLOSURE RIGHT ELEVATION
1/2" = 1'-0"



3 TRASH ENCLOSURE LEFT ELEVATION
1/2" = 1'-0"



2 TRASH ENCLOSURE FRONT ELEVATION
1/2" = 1'-0"

TRASH ENCLOSURE GENERAL NOTES:

- REFER TO STRUCTURAL FOR MASONRY, CONCRETE, STRUCTURAL STEEL AND REINFORCING STEEL FOR SPECIFICATIONS.
- PROVIDE LOCKING MECHANISM ON GATES AND PEDESTRIAN GATE.
- GATES TO BE BUILT WITH 3"x2" SQUARE STEEL TUBING WITH ALL JOINTS FULLY WELDED TOGETHER AND 1 CROSS MEMBER PER GATE. FRAME TO BE PRIMED AND PAINTED PER PLAN.

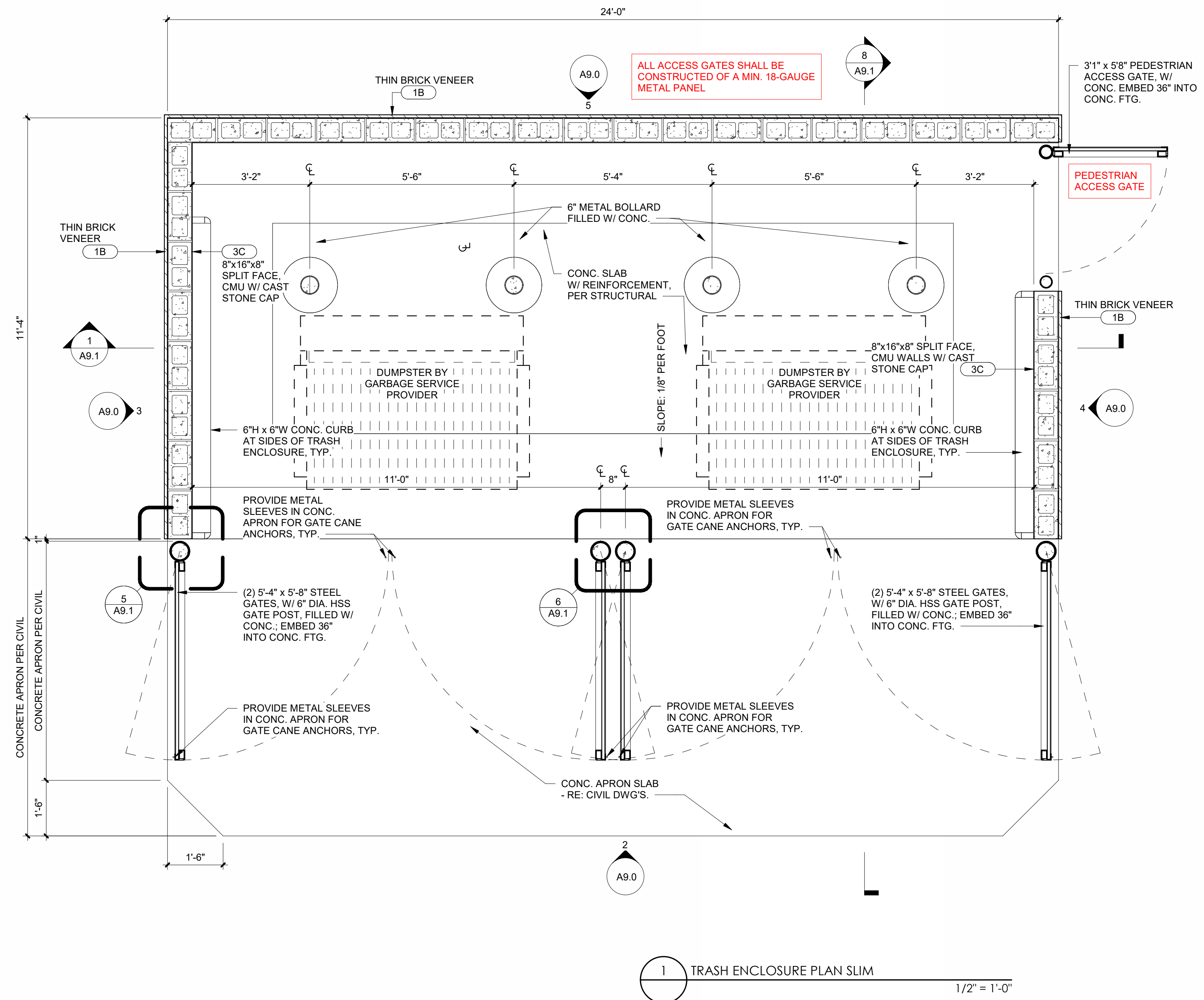
TRASH ENCLOSURE MATERIALS				
ID	MATERIAL	MANUFACTURER	COLOR	NOTES
1B	THIN BRICK	HEBRON BRICK	FACE BRICK - THIN BRICK VENEER MODULAR - 2 1/4" x 1/2" x 7 5/8"	COLOR: SLATE GRAY WIRECUT TEXTURE
3C	CMU BLOCK	OPEN SPEC	INTERIOR OF TE TO BE PAINTED	UTILITY CMU BLOCK, 8x16x8; 8x8x8 AS NECESSARY
3D	CAST STONE CAP	OPEN SPEC	TO BE SELECTED BY ARCHITECT	10" WIDE x 2" HIGH AT EDGES- 3" HIGH AT PEAK- SEE PLANS
PT-1	PAINT	SHERWIN-WILLIAMS	GP-0624	DUTCH BROS GRAY, GATES BODY
PT-2	PAINT	SHERWIN-WILLIAMS	GP-0642	DUTCH BROS BLUE, GATE FRAMES & POSTS



ARCHITECT
CORALIC, LLC
9700 MACKENZIE ROAD, STE. 222
ST. LOUIS, MO 63125
TJ 314.578.4953
EDIN@CORALICARCHITECTURE.COM
STRUCTURAL ENGINEER
KREHER ENGINEERING, INC.
208 N. MAIN STREET,
COLUMBIA, IL 62236
TJ 618.281.8505
JMK@KREHERENGINEERING.COM
MEP ENGINEER
CASE ENGINEERING, INC.
796 MERUS CT.
FENTON, MO 63026
TJ 636.349.1600
MCASE@CASEENGINEERINGINC.COM



3.3.2026



1 TRASH ENCLOSURE PLAN SLIM
1/2" = 1'-0"

Project No: IN0110
Dutch Bros Coffee - New Freestanding Store
1805 E MAIN ST.
PLAINFIELD, IN 46168
For: Dutch Bros Coffee
1930 W. Rio Salado Parkway
Tempe, AZ 85281

ANNIHILATOR A1

ISSUED FOR PERMIT

3.3.2026

REV:	DATE:	DESCRIPTION:

SHEET NAME:

TRASH ENCLOSURE PLAN/ ELEVATIONS

SHEET NUMBER:

A9.0

© 2025 DB Franchising USA, LLC