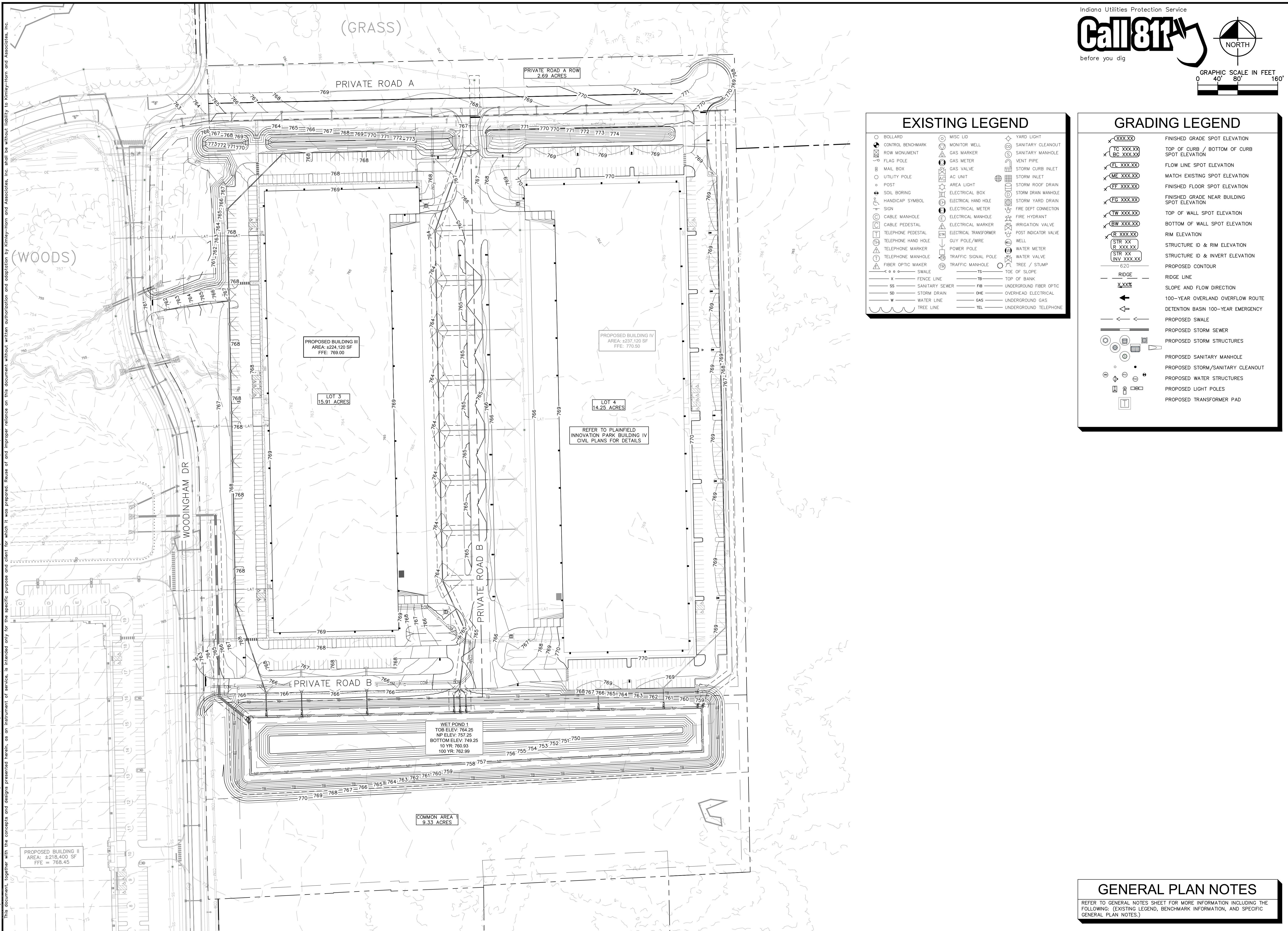


Drawing name: K:\IND\DEV\170008035_Ambrose_Plan\170008035_Ambrose_Plan.dwg Date: 12/23/2025 11:57am by: Maly Cooper
 This document, together with the concepts and designs presented herein, is intended only for the specific purpose and client for which it was prepared. Reuse of and improper reliance on this document without written authorization and adaptation by Kimley-Horn and Associates, Inc. shall be without liability to Kimley-Horn and Associates, Inc.



Indiana Utilities Protection Service

Call 811

before you dig

NORTH

GRAPHIC SCALE IN FEET
0 40' 80' 160'

EXISTING LEGEND

○ BOLLARD	○ MISC LID	○ YARD LIGHT
□ CONTROL BENCHMARK	○ GAS MARKER	○ SANITARY CLEANOUT
□ FLAG POLE	○ GAS METER	○ SANITARY MANHOLE
□ MAIL BOX	○ GAS VALVE	○ VENT PIPE
○ UTILITY POLE	○ AC UNIT	○ STORM CURB INLET
○ POST	○ AREA LIGHT	○ STORM INLET
○ SOIL BORING	○ ELECTRICAL BOX	○ STORM ROOF DRAIN
○ HANDICAP SYMBOL	○ ELECTRICAL HAND HOLE	○ STORM DRAIN MANHOLE
○ SIGN	○ ELECTRICAL METER	○ STORM YARD DRAIN
○ CABLE MANHOLE	○ ELECTRICAL MANHOLE	○ FIRE DEPT CONNECTION
○ CABLE PEDESTAL	○ ELECTRICAL MARKER	○ FIRE HYDRANT
○ TELEPHONE PEDESTAL	○ ELECTRICAL TRANSFORMER	○ IRRIGATION VALVE
○ TELEPHONE HAND HOLE	○ GUY POLE/WIRE	○ POST INDICATOR VALVE
○ TELEPHONE MARKER	○ POWER POLE	○ WELL
○ TELEPHONE MANHOLE	○ TRAFFIC SIGNAL POLE	○ WATER METER
○ FIBER OPTIC MARKER	○ TRAFFIC MANHOLE	○ WATER VALVE
○ SWALE	○ TOE OF SLOPE	○ TREE / STUMP
○ FENCE LINE	○ TOE OF BANK	
○ SANITARY SEWER	○ UNDERGROUND FIBER OPTIC	
○ STORM DRAIN	○ OVERHEAD ELECTRICAL	
○ WATER LINE	○ GAS UNDERGROUND GAS	
○ TREE LINE	○ UNDERGROUND TELEPHONE	

GRADING LEGEND

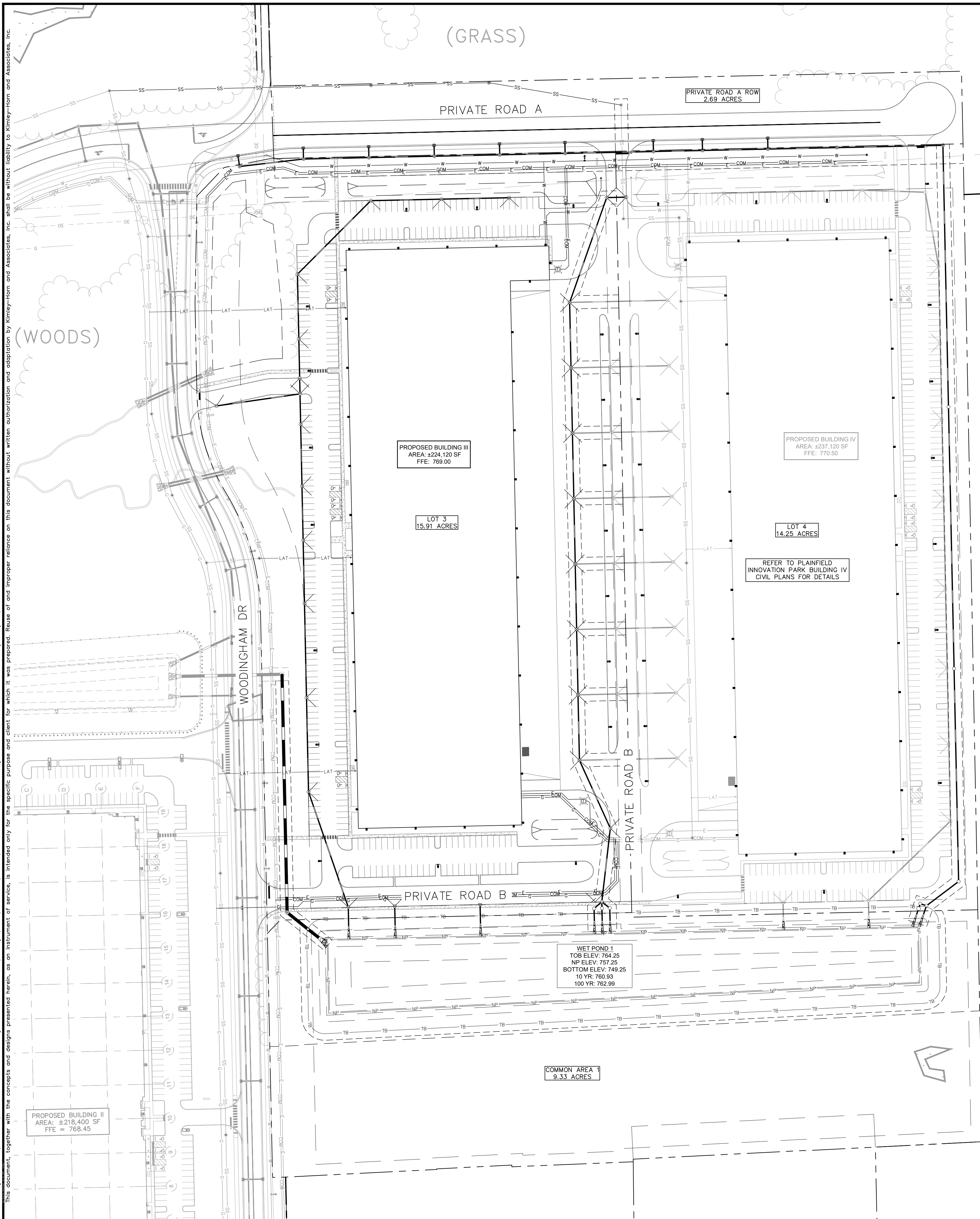
XXXX.XX	FINISHED GRADE SPOT ELEVATION
TC XXX.XX	TOP OF CURB / BOTTOM OF CURB SPOT ELEVATION
BC XXX.XX	FLOW LINE SPOT ELEVATION
FL XXX.XX	MATCH EXISTING SPOT ELEVATION
ME XXX.XX	FINISHED FLOOR SPOT ELEVATION
FF XXX.XX	FINISHED GRADE NEAR BUILDING SPOT ELEVATION
FG XXX.XX	TOP OF WALL SPOT ELEVATION
TW XXX.XX	BOTTOM OF WALL SPOT ELEVATION
BW XXX.XX	RIM ELEVATION
R XXX.XX	STRUCTURE ID & RIM ELEVATION
R XXX.XX	STRUCTURE ID & INVERT ELEVATION
STR XX	PROPOSED CONTOUR
STR XX INV XXX.XX	RIDGE LINE
620	SLOPE AND FLOW DIRECTION
—X—X—X—	100-YEAR OVERLAND OVERFLOW ROUTE
←	DETENTION BASIN 100-YEAR EMERGENCY
←	PROPOSED SWALE
←	PROPOSED STORM SEWER
←	PROPOSED STORM STRUCTURES
○	PROPOSED SANITARY MANHOLE
○	PROPOSED STORM/SANITARY CLEANOUT
○	PROPOSED WATER STRUCTURES
○	PROPOSED LIGHT POLES
○	PROPOSED TRANSFORMER PAD

AS NOTED	DESIGNED BY: CAN	 6025 KIMLEY-HORN AND ASSOCIATES, INC. 500 EAST 96TH STREET, SUITE 300, INDIANAPOLIS, IN 46240 WWW.KIMLEY-HORN.COM	REVISIONS	DATE	BY
SCALE:	DRAWN BY: MRC		CHECKED BY: CSM		
		<h2>OVERALL GRADING AND DRAINAGE PLAN</h2>			
<h3>AMBROSE</h3>					
<h2>PLAINFIELD INNOVATION PARK BUILDING III</h2>		<h3>PLAINFIELD, IN</h3>			
ORIGINAL ISSUE: 10/23/2025 KHA PROJECT NO. 170008035 SHEET NUMBER		<h2>C5.0</h2>			

GENERAL PLAN NOTES

REFER TO GENERAL NOTES SHEET FOR MORE INFORMATION INCLUDING THE FOLLOWING: (EXISTING LEGEND, BENCHMARK INFORMATION, AND SPECIFIC GENERAL PLAN NOTES.)

Drawing name: K:\IND\DEV\170008035_Ambrose_Plan\170008035_Ambrose_Plan\170008035_Ambrose_Plan\170008035_Ambrose_Plan.dwg C6.0 Dec 12, 2025 11:58am by Moly Cooper
 This document, together with the concepts and designs presented herein, is intended only for the specific purpose and client for which it was prepared. Reuse of and improper reliance on this document without written authorization and adaptation by Kimley-Horn and Associates, Inc. shall be without liability to Kimley-Horn and Associates, Inc.



Indiana Utilities Protection Service

Call 811

before you dig

EXISTING LEGEND

○ BOLLARD	○ MISC LID	○ YARD LIGHT
⊕ CONTROL BENCHMARK	⊕ MONITOR WELL	○ SANITARY CLEANOUT
⊕ FLAG POLE	⊕ GAS MARKER	○ SANITARY MANHOLE
⊕ MAIL BOX	⊕ GAS METER	○ VENT PIPE
○ UTILITY POLE	⊕ GAS VALVE	○ STORM CURB INLET
○ POST	⊕ AC UNIT	○ STORM INLET
⊕ SOIL BORING	⊕ AREA LIGHT	○ STORM ROOF DRAIN
⊕ HANDICAP SYMBOL	⊕ ELECTRICAL BOX	○ STORM DRAIN MANHOLE
⊕ SIGN	⊕ ELECTRICAL HAND HOLE	○ STORM YARD DRAIN
⊕ CABLE MANHOLE	⊕ ELECTRICAL METER	○ FIRE DEPT CONNECTION
⊕ CABLE PEDESTAL	⊕ ELECTRICAL MANHOLE	○ FIRE HYDRANT
⊕ TELEPHONE PEDESTAL	⊕ ELECTRICAL MARKER	○ IRRIGATION VALVE
⊕ TELEPHONE HAND HOLE	⊕ ELECTRICAL TRANSFORMER	○ POST INDICATOR VALVE
⊕ TELEPHONE MARKER	⊕ GUY POLE/WIRE	○ WELL
⊕ TELEPHONE MANHOLE	⊕ POWER POLE	○ WATER METER
⊕ FIBER OPTIC MAKER	⊕ TRAFFIC SIGNAL POLE	○ WATER VALVE
○ SWALE	⊕ TRAFFIC MANHOLE	○ TREE / STUMP
— FENCE LINE	— TS — TOE OF SLOPE	○ TOP OF BANK
— SS — SANITARY SEWER	— FB — UNDERGROUND FIBER OPTIC	— OHE — OVERHEAD ELECTRICAL
— SD — STORM DRAIN	— GAS — UNDERGROUND GAS	— TEL — UNDERGROUND TELEPHONE
— W — WATER LINE		
— TREE LINE		

UTILITY LEGEND

— E —	PROPOSED UNDERGROUND ELECTRIC LINE
— G —	PROPOSED GAS LINE (BY GAS COMPANY)
— P —	PROPOSED PHONE LINE
— RD —	PROPOSED ROOF DRAIN LINE
— U —	PROPOSED UNDERDRAIN
— SW —	PROPOSED SWALE
— STR XX —	PROPOSED STORM SEWER LINE
— S —	STRUCTURE ID
— S —	PROPOSED STORM STRUCTURES
— S —	PROPOSED SANITARY SEWER LINE
— S —	PROPOSED SANITARY LATERAL LINE
— S —	PROPOSED SANITARY MANHOLE
— S —	PROPOSED STORM/SANITARY CLEANOUT
— W —	PROPOSED WATER LINE
— FP —	PROPOSED FIRE PROTECTION LINE
⊕	PROPOSED WATER VALVE BOX, PIV, METER
⊕	FIRE HYDRANT, FIRE DEPT CONN. & VAULT
⊕	PROPOSED WATER BENDS & TEE
⊕	PROPOSED LIGHT POLE
⊕	PROPOSED TRANSFORMER PAD (BY OTHERS)

SCALE: AS NOTED
 DESIGNED BY: CAN
 DRAWN BY: MRC
 CHECKED BY: CSM

Kimley-Horn
 6025 KIMLEY-HORN AND ASSOCIATES, INC.
 500 EAST 86TH STREET, SUITE 300,
 INDIANAPOLIS, IN 46240
 WWW.KIMLEY-HORN.COM

CHAD STEVEN
 REGISTERED PROFESSIONAL ENGINEER
 NOT APPROVED FOR CONSTRUCTION

AMBROSE

PLAINFIELD INNOVATION PARK BUILDING III
OVERALL UTILITY PLAN
 PLAINFIELD, IN

ORIGINAL ISSUE: 10/23/2025
 KHA PROJECT NO. 170008035
 SHEET NUMBER C6.0

NO.	REVISIONS	DATE	BY

GENERAL PLAN NOTES

REFER TO GENERAL NOTES SHEET FOR MORE INFORMATION INCLUDING THE FOLLOWING: (EXISTING LEGEND, BENCHMARK INFORMATION, AND SPECIFIC GENERAL PLAN NOTES.)



LANDSCAPE NOTES

- THE LANDSCAPE CONTRACTOR SHALL BE RESPONSIBLE FOR INSTALLING MATERIALS AND PLANTS SHOWN ON THE LANDSCAPE PLAN. THE CONTRACTOR IS RESPONSIBLE FOR THE COST TO REPAIR UTILITIES, ADJACENT LANDSCAPE, PUBLIC AND PRIVATE PROPERTY THAT IS DAMAGED BY THE CONTRACTOR OR THEIR SUBCONTRACTOR'S OPERATIONS DURING INSTALLATION OR DURING THE SPECIFIED MAINTENANCE PERIOD. CALL FOR UTILITY LOCATIONS PRIOR TO ANY EXCAVATION AND PLANTING.
- THE CONTRACTOR SHALL REPORT ANY DISCREPANCY IN PLAN VS. FIELD CONDITIONS IMMEDIATELY TO THE LANDSCAPE ARCHITECT, PRIOR TO CONTINUING WITH THAT PORTION OF WORK.
- THE CONTRACTOR SHALL BE RESPONSIBLE FOR THE REPAIR OF ANY OF THEIR TRENCHES OR EXCAVATIONS THAT SETTLE.
- ALL NURSERY STOCK SHALL BE WELL BRANCHED, HEALTHY, FULL, PRE-INOCULATED AND FERTILIZED. DECIDUOUS TREES SHALL BE FREE OF FRESH SCARS. TRUNKS WILL BE WRAPPED IF NECESSARY TO PREVENT SUN SCALD AND INSECT DAMAGE. THE LANDSCAPE CONTRACTOR SHALL REMOVE THE WRAP AT THE PROPER TIME AS A PART OF THIS CONTRACT.
- ALL NURSERY STOCK SHALL BE GUARANTEED, BY THE CONTRACTOR, FOR ONE YEAR FROM DATE OF FINAL INSPECTION.
- PLANTING AREA SOIL SHALL BE TOPSOIL FOR ALL TREE, SHRUB, ORNAMENTAL GRASS, PERENNIAL, AND ANNUAL BEDS. AMENDED SOIL SHALL BE PROVIDED AND GRADED BY THE GENERAL CONTRACTOR UP TO A 6" DEPTH BELOW FINISHED GRADE IN TURF AREAS AND A 12" DEPTH IN PLANTING AREAS.
- PLANTING AREA TOPSOIL SHALL BE AMENDED WITH 25% SPHAGNUM PEATMOSS, 5% HUMUS AND 65% PULVERIZED SOIL. AMENDED TURF AREA SOIL SHALL BE STANDARD TOPSOIL. TOPSOIL SHALL CONFORM TO TECHNICAL SPECIFICATIONS FREE OF HEAVY CLAY, ROCKS, AND DIRT CLOUDS OVER 1" INCH IN DIAMETER, AS WELL AS CONTAIN 3%-5% OF ORGANIC MATTER.
- SEED/SOD LIMIT LINES ARE APPROXIMATE. CONTRACTOR SHALL SEED/SOD ALL AREAS WHICH ARE DISTURBED BY GRADING WITH THE SPECIFIED SEED/SOD MIXES.
- CONTRACTOR SHALL STAKE INDIVIDUAL TREE AND SHRUB LOCATIONS AND OUTLINE HERBACEOUS PLANTING AREAS, SHALL ADJUST LOCATIONS WHEN REQUESTED, AND SHALL OBTAIN PROJECT LANDSCAPE ARCHITECT'S ACCEPTANCE PRIOR TO PLANTING.
- ALL PLANT ID TAGS SHALL BE REMOVED AFTER INSTALLATION.
- CONTRACTOR SHALL INSTALL SHREDDED HARDWOOD MULCH AT A 3" DEPTH TO ALL TREES, SHRUB, PERENNIAL, AND GROUND COVER AREAS. TREES PLACED IN AREA COVERED BY TURF SHALL RECEIVE A 4 FT WIDE MAXIMUM TREE RING WITH 3" DEPTH SHREDDED HARDWOOD MULCH. A SPADED BED EDGE SHALL SEPARATE MULCH BEDS FROM TURF OR SEEDED AREAS. A SPADED EDGE IS NOT REQUIRED ALONG CURBED EDGES.
- WEED FABRIC SHALL BE REQUIRED UNDER MULCH.
- MULCH SHALL NOT BE HELD IN PLACE BY PLASTIC NET, OR SPRAYING OF ANY BINDER MATERIAL OR ASPHALT EMULSION.
- DO NOT DISTURB THE EXISTING PAVING, LIGHTING, OR LANDSCAPING THAT EXISTS ADJACENT TO THE SITE UNLESS OTHERWISE NOTED ON PLAN.
- PLANT QUANTITIES SHOWN ARE FOR THE CONVENIENCE OF THE OWNER AND JURISDICTIONAL REVIEW AGENCIES. THE CONTRACTOR IS RESPONSIBLE FOR VERIFYING ALL PLANT QUANTITIES AS DRAWN.
- THE OWNER'S REPRESENTATIVE MAY REJECT ANY PLANT MATERIALS THAT ARE DISEASED, DEFORMED, OR OTHERWISE NOT EXHIBITING SUPERIOR QUALITY.
- WEEDING, LANDSCAPE MAINTENANCE, AND WATERING TO BE THE CONTRACTOR'S RESPONSIBILITY DURING CONSTRUCTION. ALL PLANT MATERIALS REQUIRED BY THIS SECTION SHALL BE MAINTAINED AS LIVING VEGETATION AND SHALL BE PROMPTLY REPLACED BY LANDSCAPE CONTRACTOR DURING WARRANTY PERIOD IF THE PLANT MATERIAL HAS DIED PRIOR TO FINAL ACCEPTANCE. PLANTING AREAS SHALL BE KEPT FREE OF TRASH, LITTER, AND WEEDS AT ALL TIMES.
- THE CONTINUED MAINTENANCE OF ALL REQUIRED LANDSCAPING AFTER WARRANTY PERIOD EXPIRES SHALL BE THE RESPONSIBILITY OF THE OWNER OF THE PROPERTY ON WHICH SAID MATERIALS ARE REQUIRED.

PLANT SCHEDULE

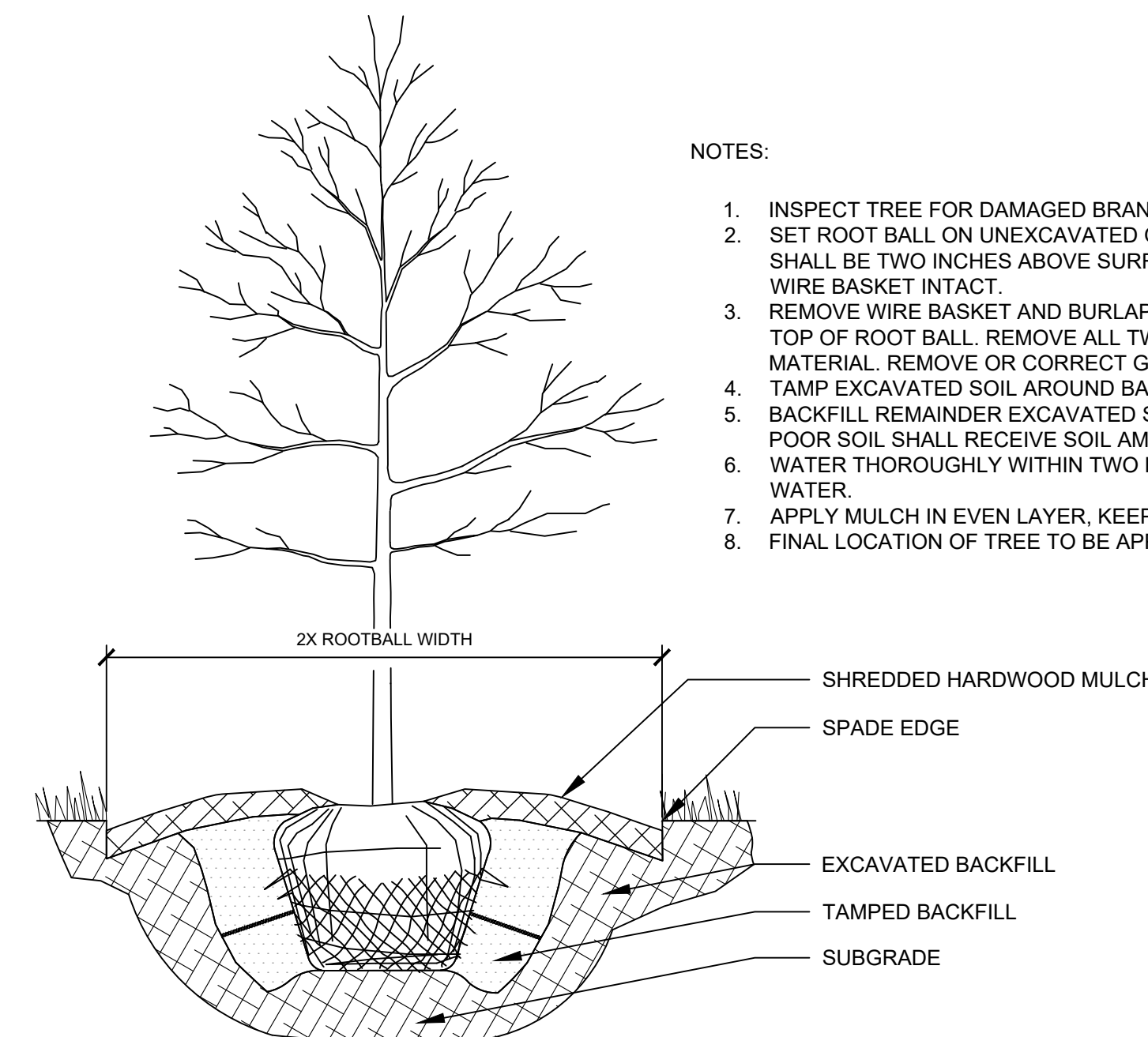
CODE	QTY	BOTANICAL NAME	COMMON NAME	CAL	HEIGHT	SPRD
EVERGREEN TREES						
JE	14	JUNIPERUS VIRGINIANA	EASTERN REDCEDAR	B & B		6' HT MIN
PP	32	PLATYCLADUS ORIENTALIS 'DEGROOT'S SPIRE'	DEGROOT'S SPIRE ARBORVITAE	B & B		6' HT MIN
PS	13	PINUS STROBUS	WHITE PINE	B & B		6' HT MIN
PV	5	PINUS VIRGINIANA	VIRGINIA PINE	B & B		6' HT MIN
DECIDUOUS TREES						
AA	6	ACER SACCHARUM 'AUTUMN SPLENDOR'	AUTUMN SPLENDOR SUGAR MAPLE	B & B	2.5' CAL MIN	
CC	7	CARYA CORDIFORMIS	BITTERNUT HICKORY	B & B	2.5' CAL MIN	
LT	6	LIRIODENDRON TULIPIFERA	TULIP POPLAR	B & B	2.5' CAL MIN	
QR	6	QUERCUS RUBRA	NORTHERN RED OAK	B & B	2.5' CAL MIN	
ORNAMENTAL TREES						
AL	25	AMELANCHIER LAEVIS	ALLEGHENY SERVICEBERRY MULTI-TRUNK	B & B	1.5' CAL MIN	
DECIDUOUS SHRUBS						
HR	14	HYDRANGEA PANICULATA 'BOBO'	PANICLE HYDRANGEA	---	SEE PLAN	24" HT MIN
EVERGREEN SHRUBS						
II	132	ILEX GLABRA 'COMPACTA'	COMPACT INKBERRY	---	36" OC	24" HT MIN
IW	43	ILEX VERTICILLATA	WINTERBERRY	---	36" OC	24" HT MIN
TW	119	THUJA OCCIDENTALIS 'WOODWARDII'	WOODWARD ARBORVITAE	---	36" OC	24" HT MIN
VX	124	VIBURNUM X 'SARCOXIE'	SARCOXIE VIBURNUM	---	36" OC	24" HT MIN
PERENNIALS						
AM	21	ARMERIA MARITIMA	SEA THRIFT	---		12" HT MIN
CM	60	CALAMINTHA NEPETA SU CATMINT	LESSER CATMINT	---		24" HT MIN
CM2	20	CALAMINTHA NEPETA SU CATMINT	LESSER CATMINT	---		24" HT MIN
HB	43	HOSTA SIEBOLDIANA	HOSTA	---		12" HT MIN
MC	40	MUHLENBERGIA CAPILLARIS	PINK MUHLY GRASS	---		24" HT MIN

ORDINANCE CHART		
ZONING: I-2	REQUIRED	PROVIDED
PERIMETER LANDSCAPING		
North Perimeter: • Level 2 perimeter: Any combination of plants selected from the plant categories listed in Table 4.7-C which equals or exceeds a plant unit value of 2.0 for each 100 lineal feet. West Perimeter: • Level 4 perimeter: Any combination of plants selected from plant categories listed in Table 4.7-C which equals or exceeds a plant unit value of 4.0 for each 100 lineal feet.	• North Perimeter: 481 LF / 100 = 5 x 2 = 10 PUV required • West Perimeter: 1,348 LF / 100 = 14 x 2 = 28 PUV required	• North Perimeter: 11 Evergreen Trees (6' high) = .5 x 11 = 5.5 PUV 6 Deciduous Shade (Overstory) Trees (2.5 caliper) = .75 x 6 = 4.5 PUV 5.5 + 4.5 = 10 PUV provided • West Perimeter: Requirement fulfilled by existing trees to remain.
FOUNDATION PLANTINGS		
• Front, side, and rear of the Building shall have foundation planting areas. • Foundation planting areas shall maintain a minimum depth of six (6) feet and any combination of plants selected from the Plant Categories listed in Table 4.7-C which equals or exceeds a Plant Unit Value of 1.0 for each one-hundred (100) lineal feet.	• 1,526 LF / 100 = 16 PUV, 6 ft. depth planting bed required	• 32 Evergreen Trees (6' high) = .5 x 32 = 16 PUV provided
PARKING LOT INTERIOR		
• All new surface lots shall include at least one interior landscape island with one deciduous tree, ornamental tree, or evergreen tree per island.	• 25 islands = 25 deciduous trees, ornamental trees, or evergreen trees required	• 25 ornamental trees provided
PARKING LOT PERIMETER		
• A compact hedge row planted 3' o.c. and between twenty-four and thirty inches in height at the time of planting between the front yard and the edge of parking area.	• 1,410 LF of hedge row required	• 1,410 LF of hedge row provided

TABLE 4.7-C - PLANT UNIT VALUES	
Plant Categories (Minimum size at Time of Planting)	Plant Unit Value
Deciduous Shade (Overstory) Tree: 2 1/2" caliper 4" caliper	.75 1.00
Deciduous Ornamental (Understory) Tree: 1 1/2" caliper 3" caliper	.50 .75
Multi-Stemmed Tree (8' high) Multi-Stemmed Tree (12' high)	.50 .75
Evergreen Tree (6' high) Evergreen Tree (12' high)	.50 .75
Evergreen Tree - Narrow Spread (4' high) Evergreen Tree - Narrow Spread (6' high)	.25 .40
Hedge Plant: 18" (foundation plantings only) 24" high 36" high	.025 .05 .10
Preservation of Existing Vegetation Fence, Wall or Berm	See Article 4.7, I. See Article 4.7, F.

MULCHING LEGEND	
	MULCH HARDWOOD SHREDDED MULCH, NATURAL BROWN COLOR

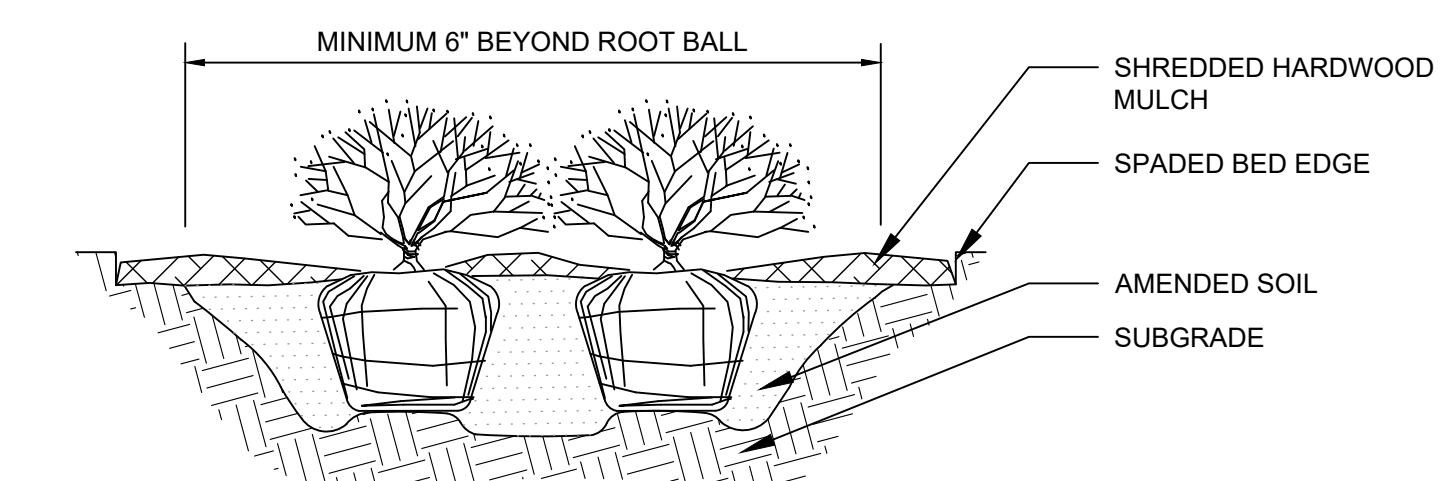
SEEDING LEGEND	
	PERMANENT SEEDING TURF TYPE TALL FESCUE; APPLY AT A RATE OF 8 LBS/1,000 SQFT



1 TREE PLANTING

NOTES:

- INSPECT TREE FOR DAMAGED BRANCHES. APPLY CORRECTIVE PRUNING.
- SET ROOT BALL ON UNEXCAVATED OR TAMPED SOIL. TOP OF ROOTBALL SHALL BE TWO INCHES ABOVE SURROUNDING GRADE WITH BURLAP AND WIRE BASKET INTACT.
- REMOVE WIRE BASKET AND BURLAP DOWN FOUR TO SIX INCHES BELOW TOP OF ROOT BALL. REMOVE ALL TWINE AND (IF USED), SYNTHETIC MATERIAL. REMOVE OR CORRECT GIRDLING ROOTS.
- TAMP EXCAVATED SOIL AROUND BASE OF ROOTBALL.
- BACKFILL REMAINDER EXCAVATED SOIL TAMPED LIGHTLY. HIGH CLAY OR POOR SOIL SHALL RECEIVE SOIL AMENDMENT PER LANDSCAPE NOTES.
- WATER THOROUGHLY WITHIN TWO HOURS USING 10 TO 15 GALLONS OF WATER.
- APPLY MULCH IN EVEN LAYER, KEEPING AWAY FROM ROOT FLARE.
- FINAL LOCATION OF TREE TO BE APPROVED BY OWNER.



NOTES:

- APPLY CORRECTIVE PRUNING.
- SET ROOT BALL OR CONTAINER ON UNEXCAVATED OR TAMPED SOIL. TOP OF ROOTBALL (CONTAINER) SHALL BE ONE INCH ABOVE SURROUNDING GRADE. FOR LARGER SHRUBS WITHIN PLANTING BED DIG A DEEPER PIT ONLY FOR THOSE SHRUBS.
- REMOVE BURLAP FROM TOP HALF THE LENGTH OF ROOTBALL. TWINE AND (IF USED) SYNTHETIC MATERIAL SHALL BE REMOVED FROM PLANTING BED. FOR CONTAINER GROWN SHRUBS, REMOVE CONTAINER AND LOOSEN ROOTS PRIOR TO INSTALLATION.
- REMOVE OR CORRECT GIRDLING ROOTS.
- PLUMB AND BACKFILL WITH AMENDED SOIL PER LANDSCAPE NOTES. WATER THOROUGHLY WITHIN TWO HOURS.
- APPLY MULCH IN EVEN LAYER, KEEPING AWAY FROM ROOT FLARE. MULCH LIMITS FOR SHRUBS EXTEND TO ALL LIMITS OF PLANTING BED, SEE PLANS FOR BED LAYOUTS.

2 SHRUB PLANTING

Drawing name: K:\INDO\DEV\170008035_Ambrose_jpp_Bldg III\Intra_Planfield_IL12_Design\CAD\DWG\Planfield_IL12.dwg L1.3 Dec 12, 2025 11:11am by: EasineSmith
This document, together with the concepts and designs presented herein, is intended only for the specific purpose and client for which it was prepared. Reuse of and improper reliance on this document without written authorization and adaptation by Kimley-Horn and Associates, Inc. shall be without liability to Kimley-Horn and Associates, Inc.

Kimley-Horn
 2025 KIMLEY-HORN AND ASSOCIATES, INC.
 500 EAST 96TH STREET, SUITE 300,
 INDIANAPOLIS, IN 46240
 WWW.KIMLEY-HORN.COM

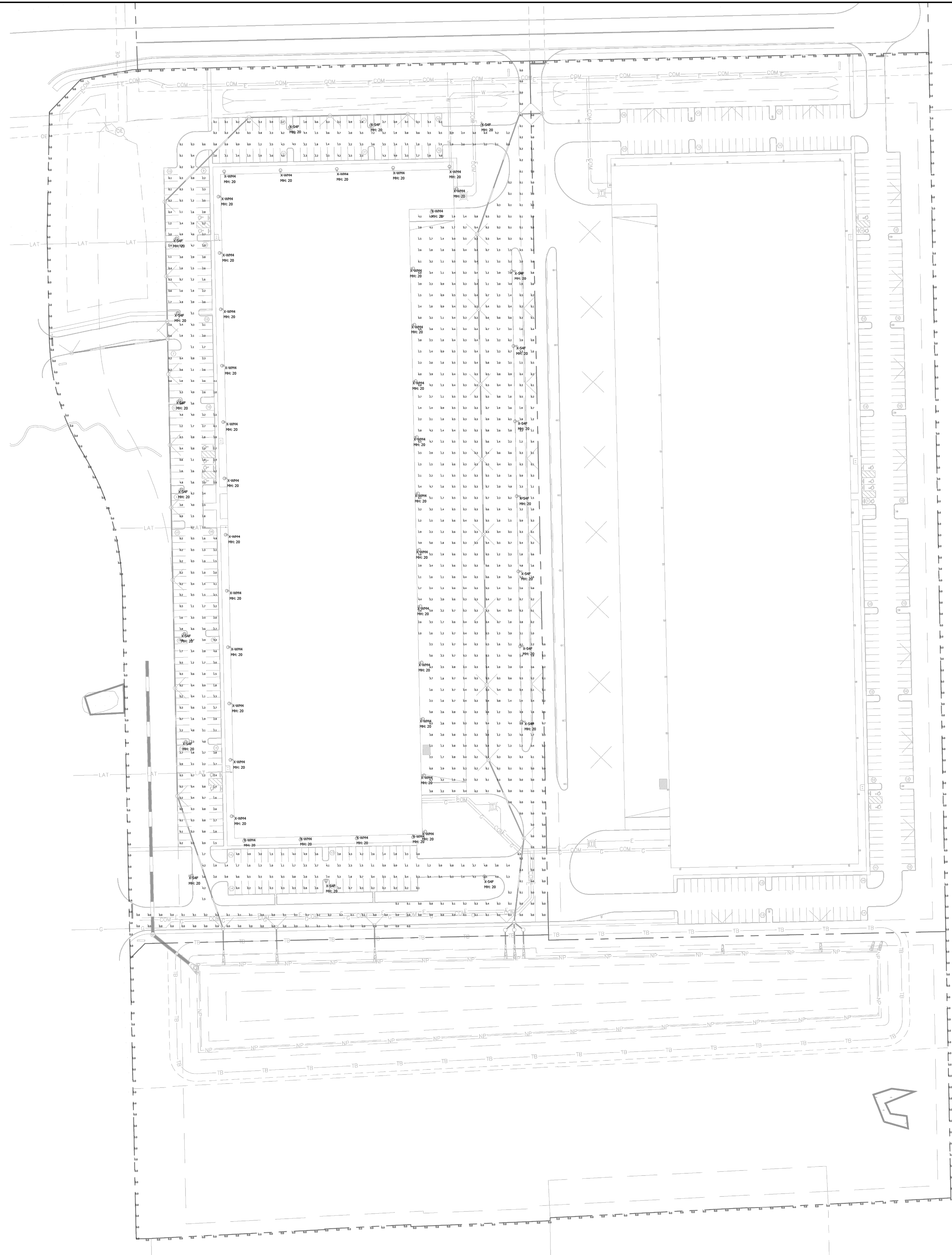
SCALE: AS NOTED
 DESIGNED BY: CAN
 DRAWN BY: MRC
 CHECKED BY: CSM

NOT APPROVED FOR CONSTRUCTION
 MATTHEW J. JONES
 CHAPEL ARCHITECT

AMBROSE
 LANDSCAPE
 INNOVATION PARK
 BUILDING III
 PLAINFIELD, IN

ORIGINAL ISSUE:
 10/06/2025
 KHA PROJECT NO.
 170008035
 SHEET NUMBER
 L1.3

NO.	REVISIONS	DATE	BY



Luminaire Schedule							
Symbol	Qty	Label	Arrangement	Lum. Lumens	LLF	Lum. Watts	Description
	34	X-WM4	Wall Mount	13769	0.900	100	OPS-14L-4F-40K8
	19	X-S4F	Single	13769	0.900	100	OPS-14L-4F-40K8

Calculation Summary							
Label	CalcType	Units	Avg	Max	Min	Avg/Min	Max/Min
_Property Line	Illuminance	Fc	0.00	0.0	0.0	N.A.	N.A.
Car Parking Paved Areas & Drives	Illuminance	Fc	2.09	7.4	0.1	20.90	74.00
Trailer Paved Areas & Drives	Illuminance	Fc	1.19	7.0	0.0	N.A.	N.A.

- LIGHTING NOTES:**
- Mounting Height = 20'
 - Light Loss Factor = 0.90
 - Footcandle Values Calculated @ Grade
 - Reflectance Values - 80/50/20 (office spaces)
50/30/20 (warehouse areas)

National Lighting Vendor:
 For pricing and technical assistance contact:
 Russ Miller of CBMC INC, tel# 317-697-7510,
 rmiller@cbmcinc.com

All electrical work shall comply with National, State, and Local codes including and not limited to the National Electric Code, NFPA 101 Life Safety Code, ASHREA and /or IECC Energy Codes.

The information contained in this document is proprietary to CBMC Lighting Solutions. This document is prepared for a specific site and incorporates calculations based on data available from the client at this time. By accepting and using this document, the recipient agrees to protect its contents from further dissemination, (other than that within the organization necessary to evaluate such specification) without the written permission of CBMC Lighting Solutions. The contents of this document are not to be reproduced or copied in whole or in part without the written permission of CBMC Lighting Solutions. copyright © 2018 CBMC Lighting Solutions all rights reserved.

CBMC LIGHTING SOLUTIONS

5855 KOPETSKY DR. SUITE G. | INDIANAPOLIS, IN 46217
 317-780-8350 | WWW.CBMCINC.COM

SEE MORE

This lighting pattern represents illumination levels calculated from laboratory data taken under controlled conditions in accordance with IESNA approved methods. Actual performance of any manufacturer's luminaire may vary due to variation in electrical voltage, tolerance in lamps and LED lumen package, location adjustments, and other variable field conditions.

Contractor to check and verify all dimensions on site before commencing any work shown.

Plainfield Innovation Park -
 Bldg #3 & 4

SITE LAYOUT

Scale: 1" = 80' Drawing No: LP1
 Date: 12/2/25 Project No:
 Drawn By: SJM

CB28760-SITE-B3-2 P1.0