

0 20' 40'
SCALE: 1" = 20'

KEY NOTES: (XX)

- A1 CONCRETE PAVEMENT
- C13 CONCRETE 6 INCH "STRAIGHT" CURB
- C19 DEPRESSED CURB AND GUTTER
- D1 LIGHT DUTY ASPHALT PAVEMENT
- D2 HEAVY DUTY ASPHALT PAVEMENT
- D3 PUBLIC RIGHT-OF-WAY GOVERNING MUNICIPALITY ASPHALT PAVEMENT
- DW DETECTABLE WARNING SURFACE
- E EXISTING CURB / PAVEMENT / SIDEWALK TO REMAIN
- F1 CONCRETE SIDEWALK
- F2 CONCRETE INTEGRAL / MONOLITHIC CURB AND WALK
- L EXTERIOR LIGHTS. VERIFY FINAL LOCATION WITH PHOTOMETRIC PLAN.
- M MATCH INTO EXISTING
- O1 FENCE LOCATION ALONG WALK AND AROUND PLAYGROUND. 48" CHAINLINK, BLACK, VINYL COATED. (COORDINATE WITH OWNER ON FINAL LOCATION).
- O2 SECURITY GATE WITH PANIC ALARM HARDWARE AND FIRE DEPT ACCESS. MATERIALS TO MATCH ADJACENT FENCING.
- O3 BLACK ALUMINUM WROUGHT IRON APPEARANCE FENCING. 48" HEIGHT, CHILD SAFETY COMPLIANT (SOUTH & WEST SIDES OF BUILDING)
- S34 4 INCH SOLID WHITE PAVEMENT STRIPING (TYP.)
- S37 ADA BLUE PAVEMENT STRIPING AND MARKINGS
- S38 WHITE PAVEMENT CROSSWALK TRANSVERSE MARKING
- T1 CURB TAPER
- U DUMPSTER ENCLOSURE (SEE ARCHITECTURAL PLANS)
- X1 HANDICAP PARKING SIGN
- Y BICYCLE PARKING
- Z LANDSCAPE AREA
- AA1 CURB RAMP, TYPE K
- AA2 SIDEWALK TRANSITION PER TOWN OF PLAINFIELD COMMERCIAL DRIVE AND INDOT DETAILS.



REVISIONS AND ISSUES	DATE	BY

GENERAL NOTES / LEGEND:

PROJECT:
KID CITY PLAINFIELD

PROJECT LOCATION:
147 MEIJER DR.
TOWN OF PLAINFIELD, INDIANA 46168
HENDRICKS COUNTY

SECTION, TOWNSHIP, RANGE:
SE 1/4 S26, T15N, R1E

CLIENT:
metaCRE

841 E. 64TH ST. STE. 201
INDIANAPOLIS, INDIANA 46220

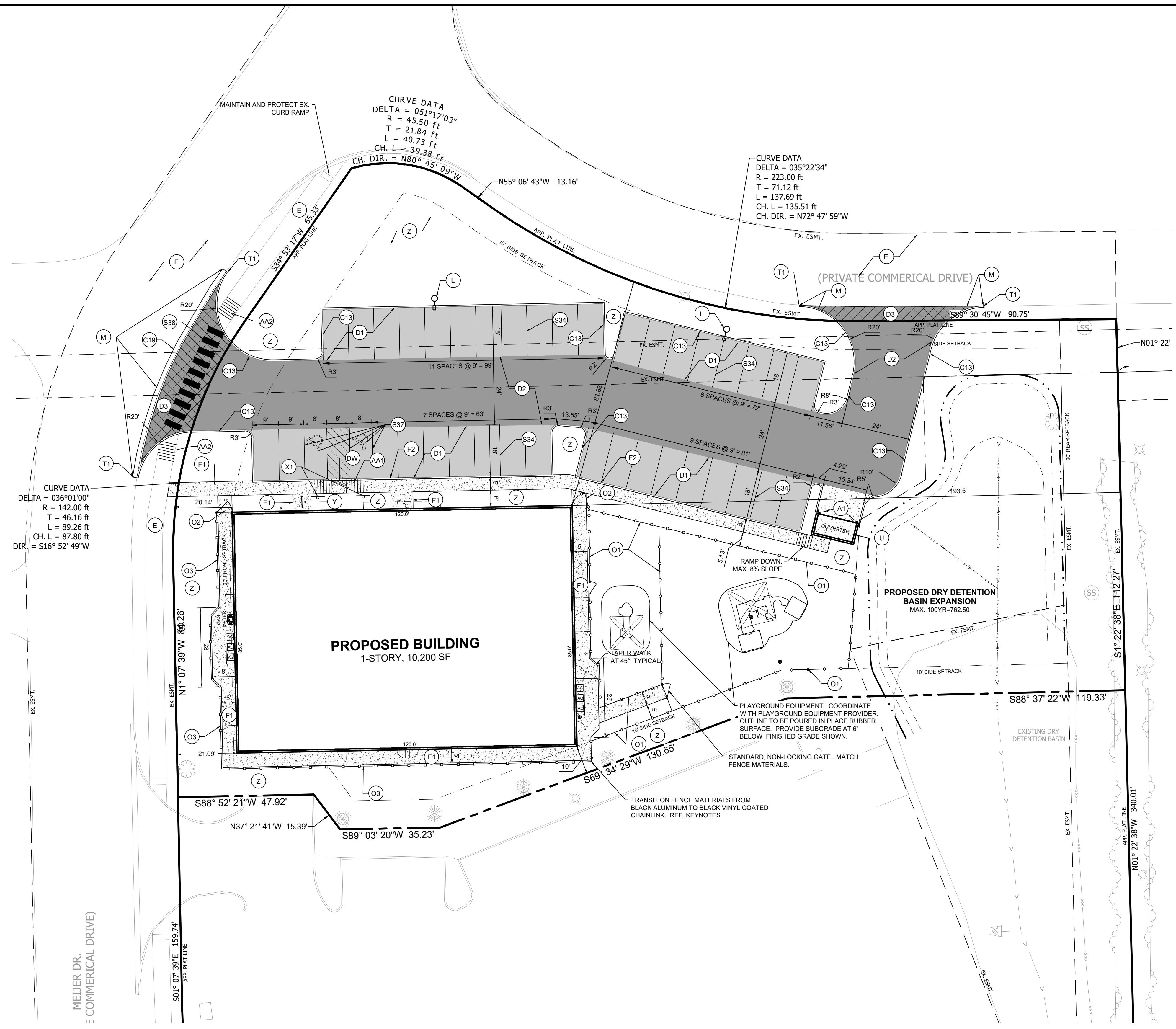
PLAN DATE:
1/11/2024

DESIGN: AF CHECK: AF DRAWN: KG

PROJECT NO:
2310004

SHEET NAME:
SITE PLAN

SHEET NO.
C201



ALL DIMENSIONS UNLESS OTHERWISE NOTED ARE IN FEET AND INCHES. DIMENSIONS TO FACE UNLESS OTHERWISE NOTED. THIS PLAN IS A PRELIMINARY DESIGN AND IS NOT TO BE USED FOR CONSTRUCTION. ALL RIGHTS RESERVED. © 2024 FRITZ ENGINEERING SERVICES, LLC