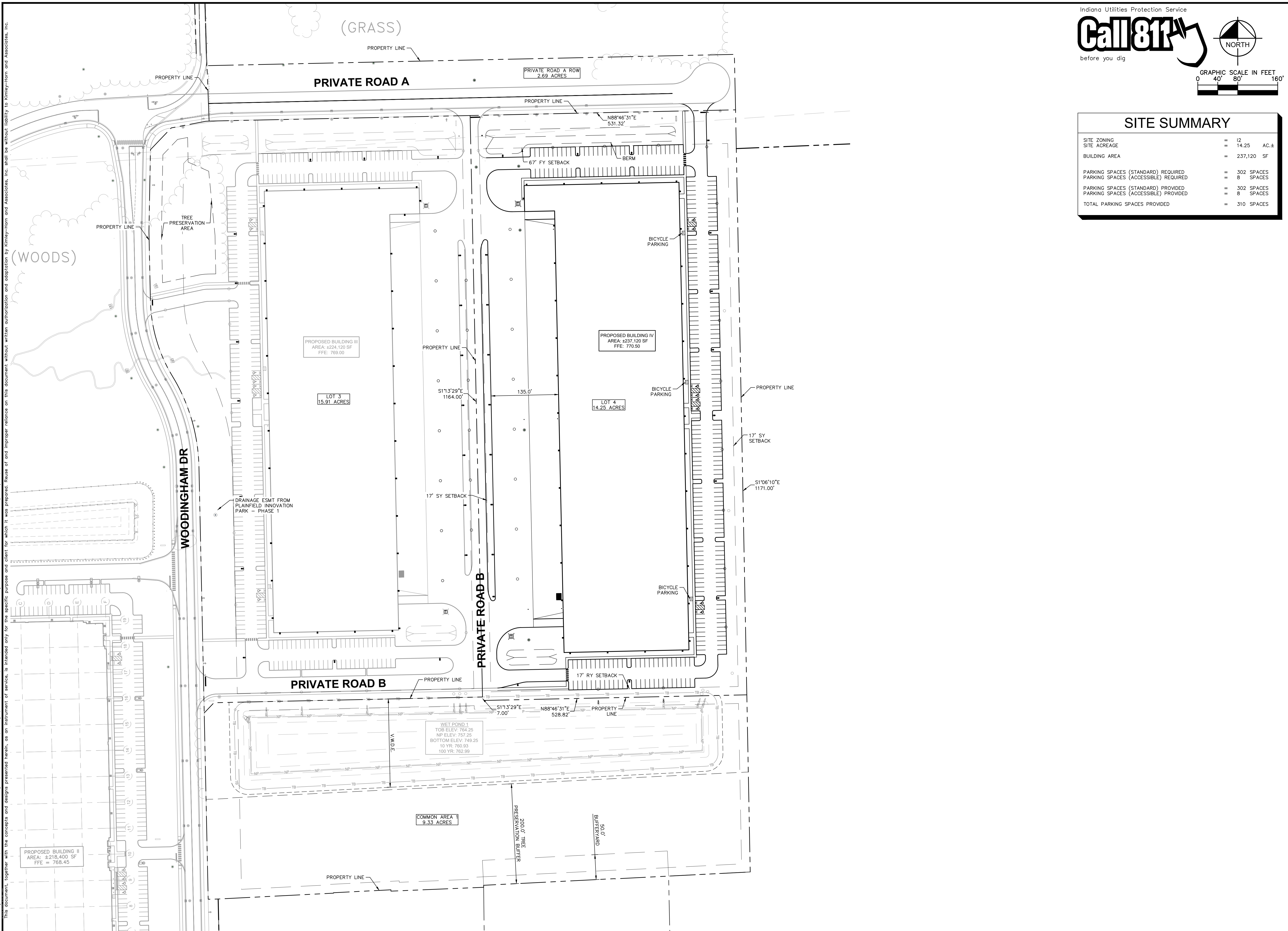


Drawing name: K:\IND_DEV\170008035_Ambrose_Plan\170008035_Ambrose_Plan\170008035_Ambrose_Plan\170008035_Ambrose_Plan.dwg
 Design: C:\IND_DEV\170008035_Ambrose_Plan\170008035_Ambrose_Plan\170008035_Ambrose_Plan.dwg
 Date: 12/23/2025 11:58am
 by: MelyCooper
 This document, together with the concepts and designs presented herein, is intended only for the specific purpose and client for which it was prepared. Reuse of and improper reliance on this document without written authorization and adaptation by Kimley-Horn and Associates, Inc. shall be without liability to Kimley-Horn and Associates, Inc.



Indiana Utilities Protection Service

Call 811

before you dig

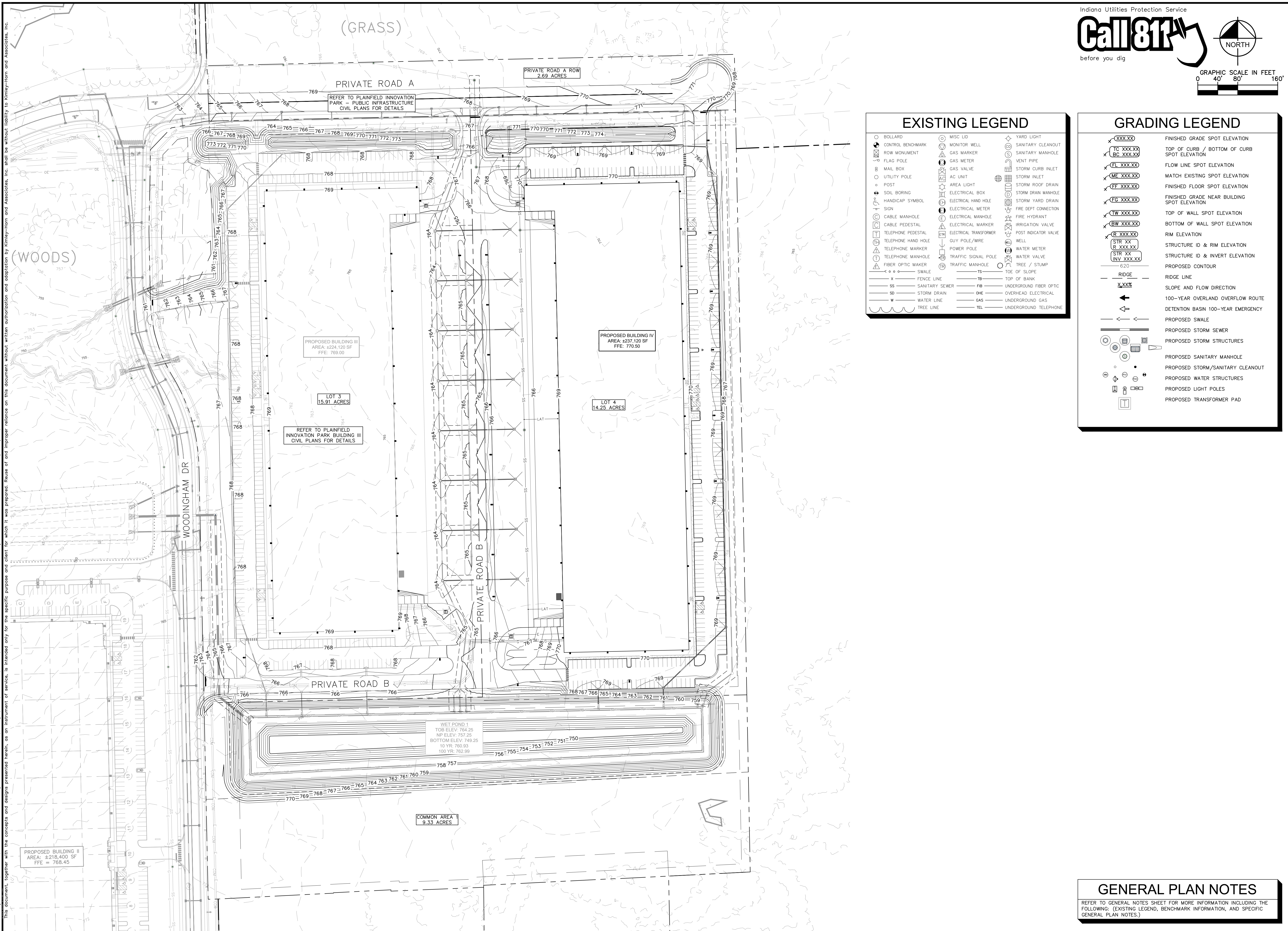
GRAPHIC SCALE IN FEET
0 40 80 160

SITE SUMMARY	
SITE ZONING	= I2
SITE ACREAGE	= 14.25 AC.±
BUILDING AREA	= 237,120 SF
PARKING SPACES (STANDARD) REQUIRED	= 302 SPACES
PARKING SPACES (ACCESSIBLE) REQUIRED	= 8 SPACES
PARKING SPACES (STANDARD) PROVIDED	= 302 SPACES
PARKING SPACES (ACCESSIBLE) PROVIDED	= 8 SPACES
TOTAL PARKING SPACES PROVIDED	= 310 SPACES

 2025 KIMLEY-HORN AND ASSOCIATES, INC. 500 EAST 96TH STREET, SUITE 300, INDIANAPOLIS, IN 46240 WWW.KIMLEY-HORN.COM	SCALE: AS NOTED DESIGNED BY: CAN DRAWN BY: MRC CHECKED BY: CSM		AMBROSE	REVISIONS NO. DATE BY

OVERALL SITE PLAN	PLAINFIELD INNOVATION PARK BUILDING IV PLAINFIELD, IN
ORIGINAL ISSUE: 10/23/2025 KHA PROJECT NO. 170008035	SHEET NUMBER C3.0

Drawing name: K:\IND\DEV\170008035_Ambrose_Plan\Bldg III\Intra-Plainfield_III_2.dwg (CADD) Plainfield_III_2.dwg 4/15/2025 11:58am by: Maly Cooper
 This document, together with the concepts and designs presented herein, is intended only for the specific purpose and client for which it was prepared. Reuse of and improper reliance on this document without written authorization and adaptation by Kimley-Horn and Associates, Inc. shall be without liability to Kimley-Horn and Associates, Inc.



EXISTING LEGEND

○ BOLLARD	○ MISC LID	○ YARD LIGHT
▬ CONTROL BENCHMARK	○ GAS MARKER	○ SANITARY CLEANOUT
▬ FLAG POLE	○ GAS METER	○ SANITARY MANHOLE
▬ MAIL BOX	○ GAS VALVE	○ VENT PIPE
○ UTILITY POLE	○ AC UNIT	○ STORM CURB INLET
○ POST	○ AREA LIGHT	○ STORM INLET
○ SOIL BORING	○ ELECTRICAL BOX	○ STORM ROOF DRAIN
○ HANDICAP SYMBOL	○ ELECTRICAL HAND HOLE	○ STORM DRAIN MANHOLE
○ SIGN	○ ELECTRICAL METER	○ STORM YARD DRAIN
○ CABLE MANHOLE	○ ELECTRICAL MANHOLE	○ FIRE DEPT CONNECTION
○ CABLE PEDESTAL	○ ELECTRICAL MARKER	○ FIRE HYDRANT
○ TELEPHONE PEDESTAL	○ ELECTRICAL TRANSFORMER	○ IRRIGATION VALVE
○ TELEPHONE HAND HOLE	○ GUY POLE/WIRE	○ POST INDICATOR VALVE
○ TELEPHONE MARKER	○ POWER POLE	○ WELL
○ TELEPHONE MANHOLE	○ TRAFFIC SIGNAL POLE	○ WATER METER
○ FIBER OPTIC MAKER	○ TRAFFIC MANHOLE	○ WATER VALVE
○ SWALE	○ TOE OF SLOPE	○ TREE / STUMP
▬ FENCE LINE	○ TOP OF BANK	
▬ SANITARY SEWER	○ UNDERGROUND FIBER OPTIC	
▬ SD	○ OVERHEAD ELECTRICAL	
▬ W	○ GAS	
▬ TREE LINE	○ UNDERGROUND GAS	
	○ UNDERGROUND TELEPHONE	

GRADING LEGEND

XXX.XX	FINISHED GRADE SPOT ELEVATION
TC XXX.XX	TOP OF CURB / BOTTOM OF CURB SPOT ELEVATION
BC XXX.XX	FLOW LINE SPOT ELEVATION
FL XXX.XX	MATCH EXISTING SPOT ELEVATION
ME XXX.XX	FINISHED FLOOR SPOT ELEVATION
FF XXX.XX	FINISHED GRADE NEAR BUILDING SPOT ELEVATION
FG XXX.XX	TOP OF WALL SPOT ELEVATION
TW XXX.XX	BOTTOM OF WALL SPOT ELEVATION
BW XXX.XX	RIM ELEVATION
R XXX.XX	STRUCTURE ID & RIM ELEVATION
STR XX	STRUCTURE ID & INVERT ELEVATION
STR XX INV XXX.XX	PROPOSED CONTOUR
620	RIDGE LINE
—X—X—X—	SLOPE AND FLOW DIRECTION
←	100-YEAR OVERLAND OVERFLOW ROUTE
←	DETECTION BASIN 100-YEAR EMERGENCY
—	PROPOSED SWALE
—	PROPOSED STORM SEWER
—	PROPOSED STORM STRUCTURES
—	PROPOSED SANITARY MANHOLE
—	PROPOSED STORM/SANITARY CLEANOUT
—	PROPOSED WATER STRUCTURES
—	PROPOSED LIGHT POLES
—	PROPOSED TRANSFORMER PAD

GENERAL PLAN NOTES

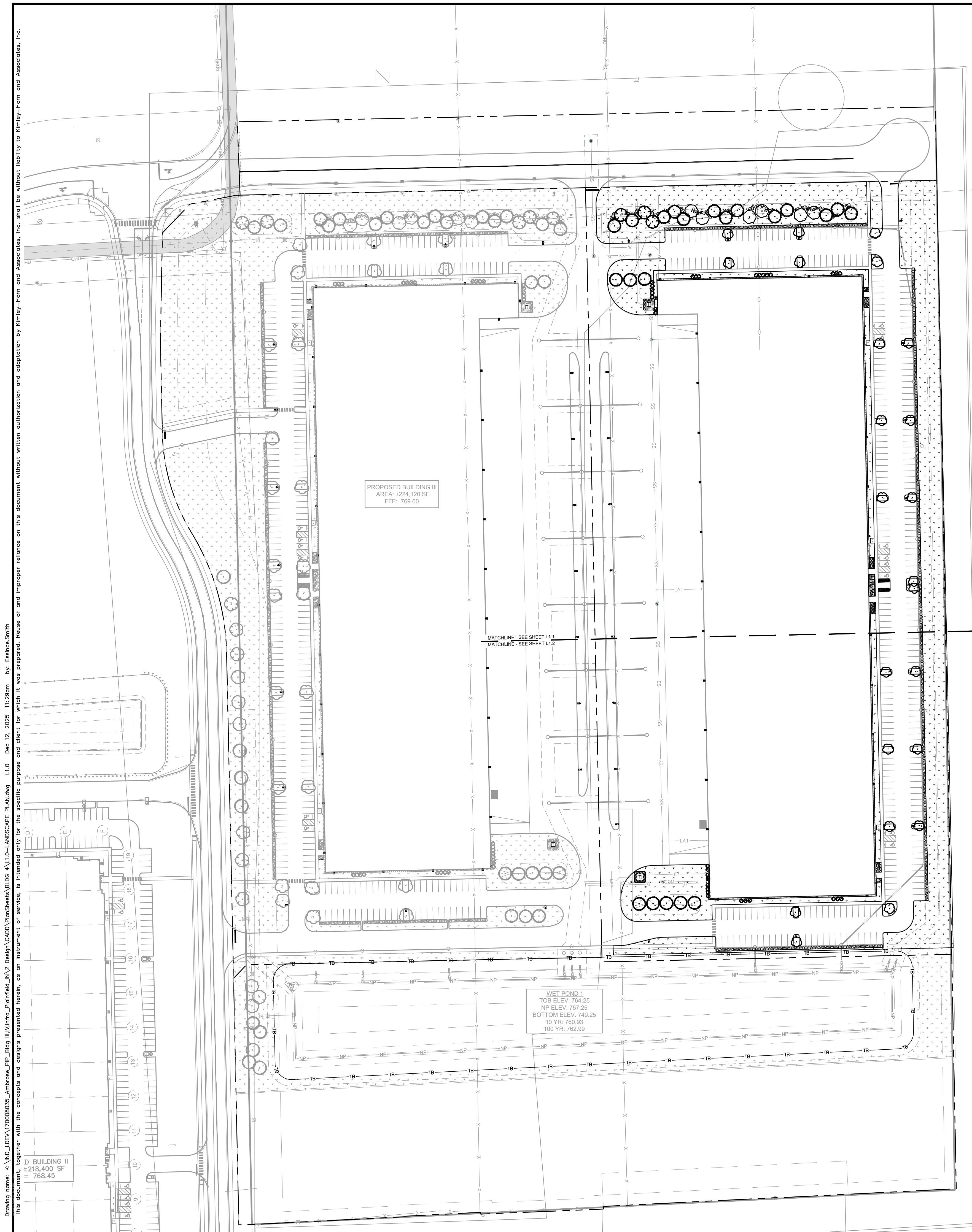
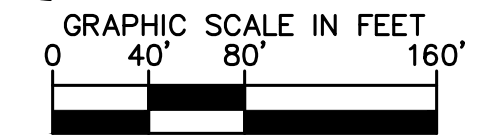
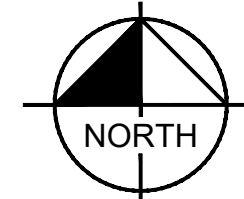
REFER TO GENERAL NOTES SHEET FOR MORE INFORMATION INCLUDING THE FOLLOWING: (EXISTING LEGEND, BENCHMARK INFORMATION, AND SPECIFIC GENERAL PLAN NOTES.)

Indiana Utilities Protection Service
Call 811
 before you dig

GRAPHIC SCALE IN FEET
 0 40' 80' 160'

NORTH

<p>AS NOTED DESIGNED BY: CAN DRAWN BY: MRC CHECKED BY: CSM</p>	<p>SCALE: AS NOTED</p> <p>DESIGNED BY: CAN</p> <p>DRAWN BY: MRC</p> <p>CHECKED BY: CSM</p>
<p>CHAD STEVEN REGISTERED PROFESSIONAL ENGINEER NOT APPROVED FOR CONSTRUCTION</p>	
<p>AMBROSE</p>	
<p>OVERALL GRADING AND DRAINAGE PLAN</p>	
<p>PLAINFIELD INNOVATION PARK BUILDING IV PLAINFIELD, IN</p>	
<p>ORIGINAL ISSUE: 10/23/2025 KHA PROJECT NO. 170008035 SHEET NUMBER C5.0</p>	



PLANT SCHEDULE

SYMBOL	CODE	QTY	BOTANICAL NAME	COMMON NAME	CAL	HEIGHT	SPRD
EVERGREEN TREES							
	JE	10	JUNIPERUS VIRGINIANA	EASTERN REDCEDAR	B & B	6' HT MIN	
	PP	32	PLATYCLADUS ORIENTALIS 'DEGROOT'S SPIRE'	DEGROOT'S SPIRE ARBORVITAE	B & B	6' HT MIN	
	PS	11	PINUS STROBUS	WHITE PINE	B & B	6' HT MIN	
	PV	3	PINUS VIRGINIANA	VIRGINIA PINE	B & B	6' HT MIN	
DECIDUOUS TREES							
	AA	6	ACER SACCHARUM 'AUTUMN SPLENDOR'	AUTUMN SPLENDOR SUGAR MAPLE	B & B	2.5' CAL MIN	
ORNAMENTAL TREES							
	AL	23	AMELANCHIER LAEVIS	ALLEGHENY SERVICEBERRY MULTI-TRUNK	B & B	1.5' CAL MIN	
EVERGREEN SHRUBS							
	II	142	ILEX GLABRA 'COMPACTA'	COMPACT INKBERRY	---	36" OC	24" HT MIN
	IW	40	ILEX VERTICILLATA	WINTERBERRY	---	SEE PLAN	24" HT MIN
	TW	125	THUJA OCCIDENTALIS 'WOODWARDII'	WOODWARD ARBORVITAE	---	36" OC	24" HT MIN
	VX	135	VIBURNUM X 'SARCOXIE'	SARCOXIE VIBURNUM	---	36" OC	24" HT MIN
PERENNIALS							
	AM	23	ARMERIA MARITIMA	SEA THRIFT	---		12" HT MIN
	CM	54	CALAMINTHA NEPETA SU CATMINT	LESSER CATMINT	---		24" HT MIN
	CM2	20	CALAMINTHA NEPETA SU CATMINT	LESSER CATMINT	---		24" HT MIN
	HB	41	HOSTA SIEBOLDIANA	HOSTA	---		12" HT MIN
	MC	36	MUHLENBERGIA CAPILLARIS	PINK MUHLY GRASS	---		24" HT MIN
SHRUBS AND GRASSES							
	HR	14	HYDRANGEA PANICULATA 'BOBO'	PANICLE HYDRANGEA	---	SEE PLAN	24" HT MIN

Drawing name: K:\IND_DEV\170008035_Ambrose_Plan\Bldg III\Intro_Planfield_IV2 Design\CAD\DWG\Planfield_IV2.dwg
 This document, together with the concepts and designs presented herein, is intended only for the specific purpose and client for which it was prepared. Reuse of and improper reliance on this document without written authorization and adaptation by Kimley-Horn and Associates, Inc. shall be without liability to Kimley-Horn and Associates, Inc.

DESIGNED BY: CAN
DRAWN BY: MRC
CHECKED BY: CSM

SCALE: AS NOTED
DATE
BY

Kimley-Horn

500 EAST 96TH STREET, SUITE 300,
INDIANAPOLIS, IN 46240
WWW.KIMLEY-HORN.COM

NOT APPROVED FOR CONSTRUCTION

CAPE ARCHITECT

Matthew Ace

OVERALL LANDSCAPE PLAN

PLAINFIELD INNOVATION PARK BUILDING IV

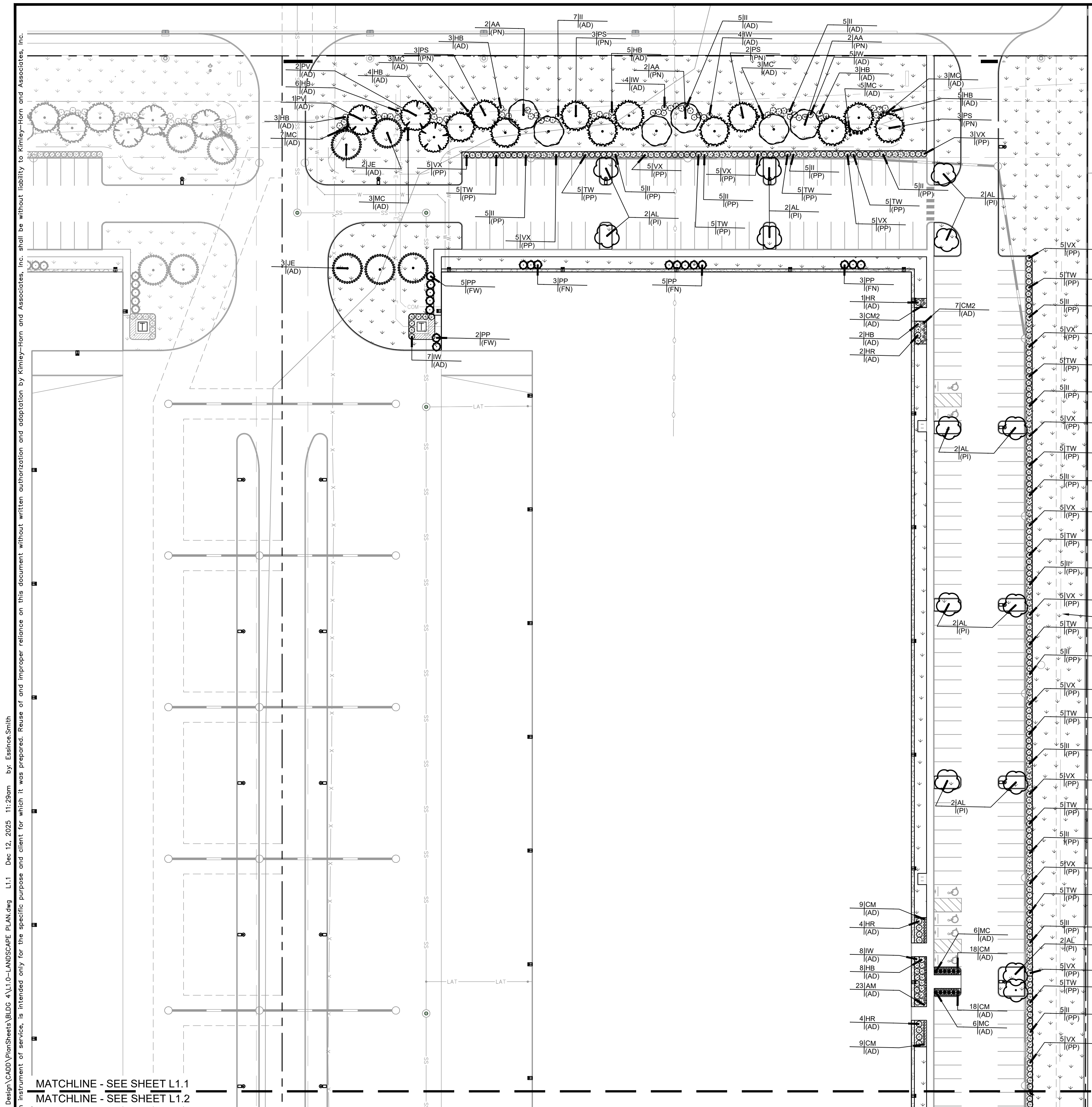
REVISIONS

ORIGINAL ISSUE: 10/23/2025

KHA PROJECT NO. 170008035

SHEET NUMBER

L1.0



MATCHLINE - SEE SHEET L1.1
 MATCHLINE - SEE SHEET L1.2

PLANT SCHEDULE

SYMBOL	CODE	QTY	BOTANICAL NAME	COMMON NAME	CAL	HEIGHT	SPRD
EVERGREEN TREES							
	JE	10	JUNIPERUS VIRGINIANA	EASTERN REDCEDAR	B & B	6' HT MIN	
	PP	32	PLATYCLADUS ORIENTALIS 'DEGROOT'S SPIRE'	DEGROOT'S SPIRE ARBORVITAE	B & B	6' HT MIN	
	PS	11	PINUS STROBUS	WHITE PINE	B & B	6' HT MIN	
	PV	3	PINUS VIRGINIANA	VIRGINIA PINE	B & B	6' HT MIN	
DECIDUOUS TREES							
	AA	6	ACER SACCHARUM 'AUTUMN SPLENDOR'	AUTUMN SPLENDOR SUGAR MAPLE	B & B	2.5' CAL MIN	
ORNAMENTAL TREES							
	AL	23	AMELANCHIER LAEVIS	ALLEGHENY SERVICEBERRY MULTI-TRUNK	B & B	1.5' CAL MIN	
EVERGREEN SHRUBS							
	II	142	ILEX GLABRA 'COMPACTA'	COMPACT INKBERRY	---	36" OC	24" HT MIN
	IW	40	ILEX VERTICILLATA	WINTERBERRY	---	SEE PLAN	24" HT MIN
	TW	125	THUJA OCCIDENTALIS 'WOODWARDII'	WOODWARD ARBORVITAE	---	36" OC	24" HT MIN
	VX	135	VIBURNUM X 'SARCOXIE'	SARCOXIE VIBURNUM	---	36" OC	24" HT MIN
PERENNIALS							
	AM	23	ARMERIA MARITIMA	SEA THRIFT	---	---	12" HT MIN
	CM	54	CALAMINTHA NEPETA SU CATMINT	LESSER CATMINT	---	---	24" HT MIN
	CM2	20	CALAMINTHA NEPETA SU CATMINT	LESSER CATMINT	---	---	24" HT MIN
	HB	41	HOSTA SIEBOLDIANA	HOSTA	---	---	12" HT MIN
	MC	36	MUHLENBERGIA CAPILLARIS	PINK MUHLY GRASS	---	---	24" HT MIN
SHRUBS AND GRASSES							
	HR	14	HYDRANGEA PANICULATA 'BOBO'	PANICLE HYDRANGEA	---	SEE PLAN	24" HT MIN

EXISTING TREES TO REMAIN

PLANT CALL-OUT REQUIREMENT	
SYMBOL	DESCRIPTION
(PN)	PERIMETER REQUIREMENTS - NORTH
(PS)	PERIMETER REQUIREMENTS - SOUTH
(PE)	PERIMETER REQUIREMENTS - EAST
(PW)	PERIMETER REQUIREMENTS - WEST
(FN)	FOUNDATION - NORTH
(FS)	FOUNDATION - SOUTH
(FE)	FOUNDATION - EAST
(FW)	FOUNDATION - WEST
(PI)	PARKING LOT INTERIOR REQUIREMENTS
(PP)	PARKING LOT PERIMETER REQUIREMENTS
(AD)	ADDITIONAL PLANTING - NOT REQUIRED

Drawing name: K:\IND_DEV\170008035_Ambrose_Plan\170008035_Ambrose_Plan\170008035_Ambrose_Plan.dwg
 This document, together with the concepts and designs presented herein, is intended only for the specific purpose and client for which it was prepared. Reuse of and improper reliance on this document without written authorization and adaptation by Kimley-Horn and Associates, Inc. shall be without liability to Kimley-Horn and Associates, Inc.

SCALE: AS NOTED
 DESIGNED BY: CAN
 DRAWN BY: MRC
 CHECKED BY: CSM

Kimley-Horn
 6025 KIMLEY-HORN AND ASSOCIATES, INC.
 INDIANAPOLIS, IN 46240
 WWW.KIMLEY-HORN.COM

NOT APPROVED FOR CONSTRUCTION
 CAPE ARCHITECT

AMBROSE

PLAINFIELD INNOVATION PARK BUILDING IV PLAINFIELD, IN

ORIGINAL ISSUE: 10/23/2025
 KHA PROJECT NO. 170008035
 SHEET NUMBER **L1.1**

