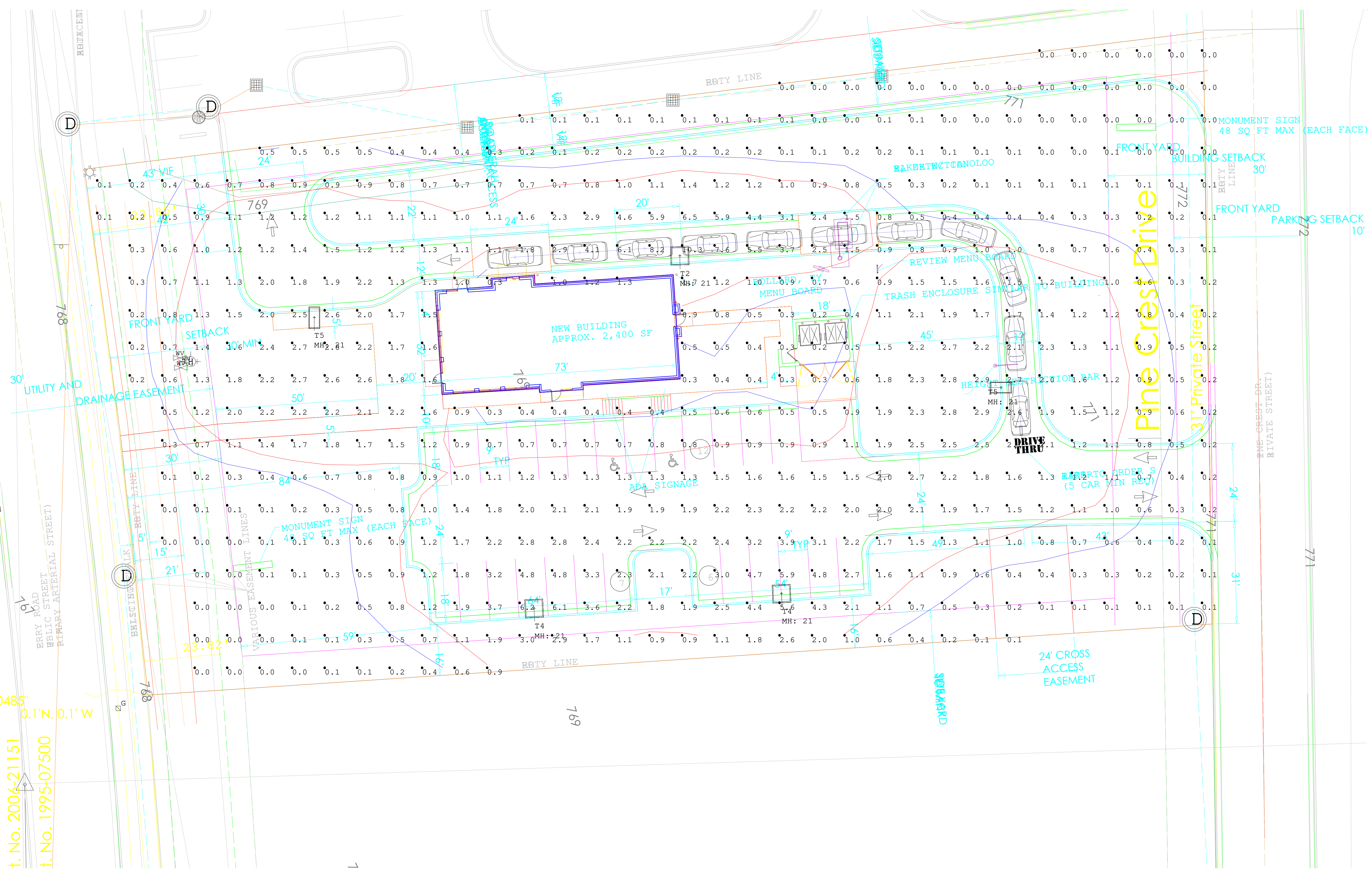


CITY OF FORT WAYNE
 Available Width Public ROW
 File No. 2006-21151
 File No. 1995-07500
 0.1' N, 0.1' W

Luminaire Schedule				
Symbol	Qty	Label	LLF	Description
	1	T2	0.900	LDS-SAL-110-DB-T2-1-NW-MAS-X-X
	2	T4	0.900	LDS-SAL-110-DB-T4-1-NW-MAS-X-X
	2	T5	0.900	LDS-SAL-110-DB-T5-1-NW-MAS



CMBUCK LIGHTING
 Established in 1941
 Fort Wayne Office:
 4622 E. State Blvd.
 Fort Wayne, IN 46815
 (260) 482-5391

Indianapolis Office:
 6850 Guilon Rd
 Indianapolis, IN 46268
 (317) 299-1515

Unless stated on this drawing the following design parameters are used:
 -Room Reflectance: 80-50-20
 -FC readings reported at 2.5' above finished floor
 -Actual readings may differ due to unknown objects in the facility, i.e. HVAC ducts, building supports, etc.
 *Please contact CM Buck and Associates with questions or concerns

Drawn By: BRB
 Checked By:
 Date: 5/30/2023
 Scale: DNS