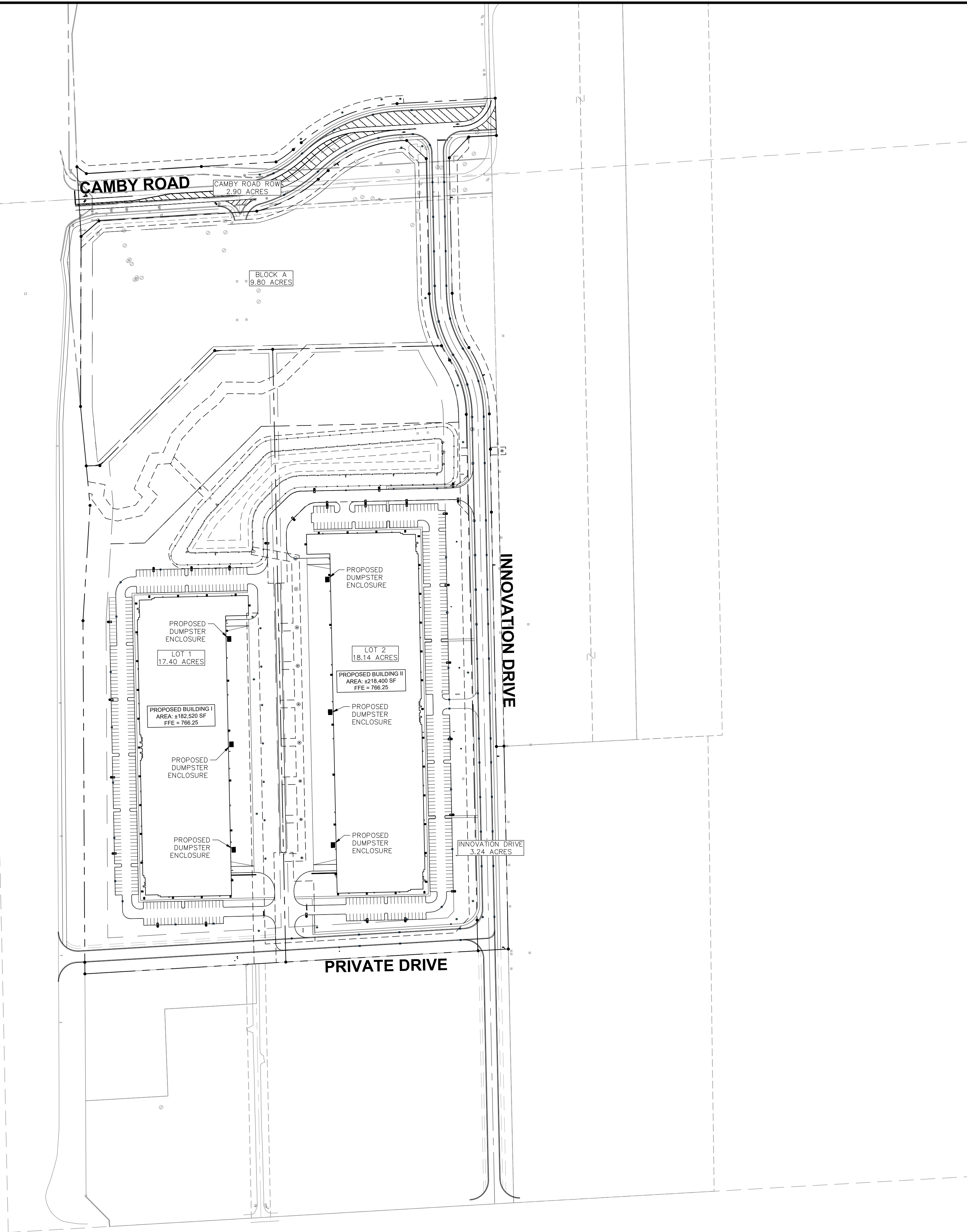
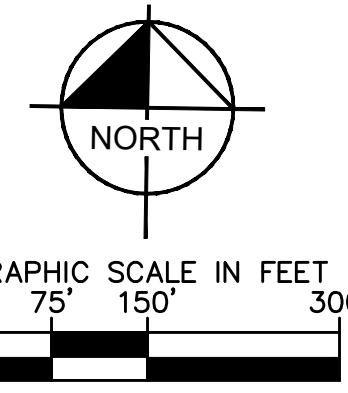


Drawing name: K:\IND\DEV\170008020_Ambrose_Rock-Creek_Plainfield_IN\2_Design\CADD\PlanSheets\Primary_Plan\Plainfield_Logistics_Park_East_Phase\170008020_Ambrose_Phase1_ProposedDumpsterExhibit_Rev_2024-0709.dwg C:\0 Jul 30, 2024 6:23pm by: colmihosad

This document, together with the concepts and designs presented herein, is intended only for the specific purpose and client for which it was prepared. Reuse of and improper reliance on this document without written authorization and adaptation by Kimley-Horn and Associates, Inc. shall be without liability to Kimley-Horn and Associates, Inc.



Indiana Utilities Protection Service
Call 811
 before you dig



NOTES
 TRASH ENCLOSURE'S CONCRETE PAINTED TO MATCH BUILDING.

<p>©2024 KIMLEY-HORN AND ASSOCIATES, INC. 500 EAST 96TH STREET, SUITE 300, INDIANAPOLIS, IN 46240 WWW.KIMLEY-HORN.COM</p>	
SCALE: AS NOTED DESIGNED BY: CSM DRAWN BY: CAN CHECKED BY: BAS	
<h1>AMBROSE</h1>	
PROPOSED DUMPSTER ENCLOSURE PLAN	PLAINFIELD INNOVATION PARK PLAINFIELD, IN
ORIGINAL ISSUE: 06/20/2024 KHA PROJECT NO. 170008020 SHEET NUMBER EX.1	REVISIONS NO. DATE BY