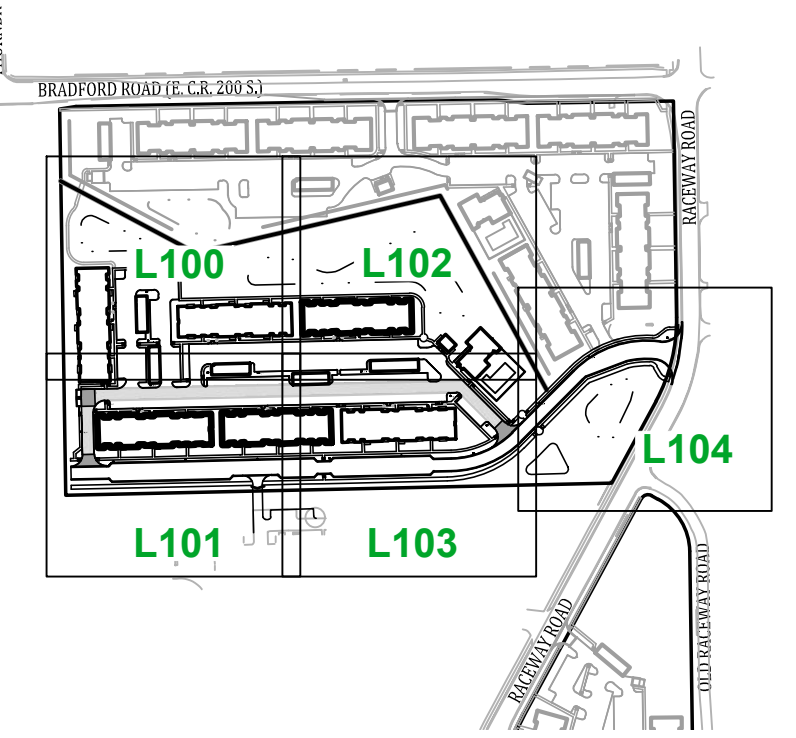
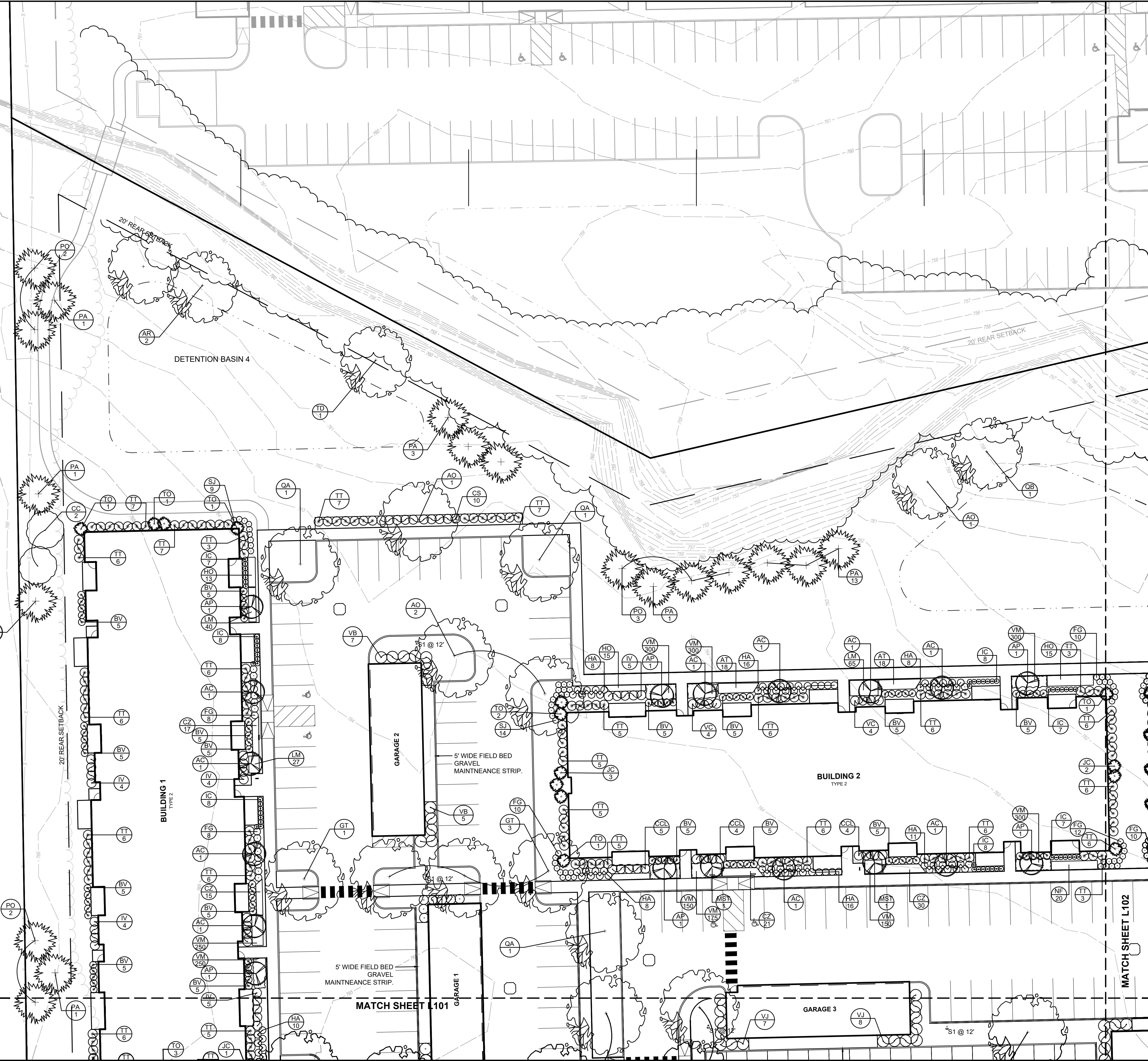


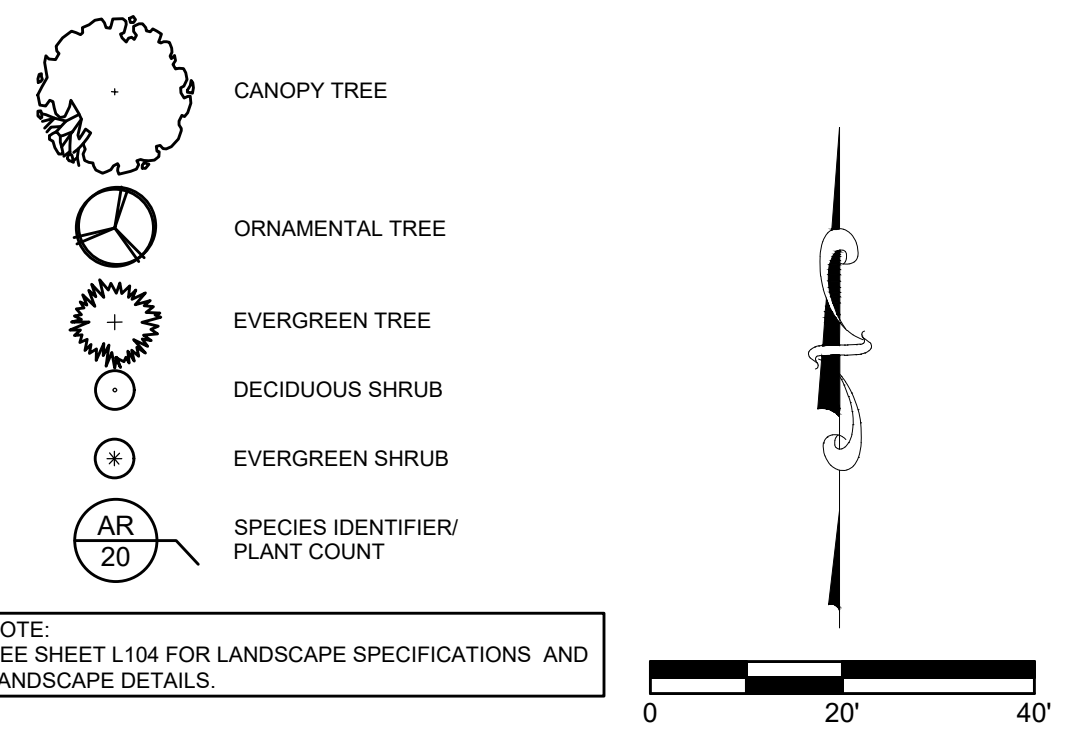
P:\2021\21233-B\Engineering\Cadd\Sheet Files\Development\Plns\21233B_dp_indesp.dwg September 30, 2025 11:04 AM



KEYMAP
SCALE: 1" = 400'

| PLANT SCHEDULE | | | | | |
|----------------|-----|--|--------------|----------|---|
| KEY | QTY | PLANT NAME BOTANICAL NAME COMMON NAME | SIZE | SPACING | REMARKS |
| AC | | Amenchier canadensis Serviceberry | 8' Height | SEE PLAN | FULL, DENSE BRANCHING, WIDTH NOT LESS THAN 60' OF HEIGHT - MULTI-STEM |
| APo | | Andromeda porifolia Boy Andromeda | 8' Height | SEE PLAN | FULL IN POT |
| AP | | Acer palmatum 'Bloodgood' Bloodgood Maple | 2.5" Height | SEE PLAN | FULL, DENSE BRANCHING, WIDTH NOT LESS THAN 60' OF HEIGHT |
| AO | | Acer rubrum 'October Glory' October Glory Red Maple | 2.5" Caliper | SEE PLAN | CENTRAL LEADER |
| AR | | Acer rubrum 'Autumn Blaze' Red Sunset Maple | 2.5" Caliper | SEE PLAN | CENTRAL LEADER |
| BV | | Buxus x korana 'Green Velvet' Green Velvet Boxwood | 18" Height | SEE PLAN | FULL IN POT |
| CCL | | Caryopteris x clandensis 'Blue Mist' Blue Mist Spirea | 3 Gallon | SEE PLAN | FULL IN POT |
| CS | | Cornus sericea Red Twig Dogwood | 24" Height | SEE PLAN | FULL IN POT |
| FG | | Fothergilla gardenii Dwarf Fothergilla | 18" Height | SEE PLAN | FULL IN POT |
| GD | | Gymnocladus dioica Kentucky Coffeetree | 2.5" Caliper | SEE PLAN | CENTRAL LEADER |
| GT | | Gleditsia tricanthos 'inermis' 'Skycode' Skyline Honeylocust | 2.5" Caliper | SEE PLAN | CENTRAL LEADER |
| HA | | Hydrangea arborescens 'Annabelle' Annabelle Hydrangea | 3 Gallon | SEE PLAN | FULL IN POT |
| IV | | Ilex verticillata 'Winter Red' Winter Red Female Winterberry | 24" Height | SEE PLAN | FULL IN POT |
| JC | | Juniper chinensis 'Hetzl' Hetzl Columnar Juniper | 6" Height | SEE PLAN | FULL IN POT |
| LM | | Liriodendron muscari Big Blue Lilytuff | 1 Gallon | SEE PLAN | FULL IN POT |
| MD | | Microbiota decussata Siberian Cypress | 2 Gallon | SEE PLAN | FULL IN POT |
| MS | | Miscanthus sinensis 'Gracillimus' Maiden Grass | 5 Gallon | SEE PLAN | FULL IN POT |
| MST | | Magnolia stellata Star Magnolia | 2.5" Caliper | SEE PLAN | FULL, DENSE BRANCHING, WIDTH NOT LESS THAN 60' OF HEIGHT |
| PA | | Picea abies Norway Spruce | 6" Height | SEE PLAN | CENTRAL LEADER |
| PO | | Picea omorika Serbian Spruce | 6" Height | SEE PLAN | CENTRAL LEADER |
| QA | | Quercus alba White Oak | 2.5" Caliper | SEE PLAN | CENTRAL LEADER |
| QB | | Quercus bicolor Swamp White Oak | 2.5" Caliper | SEE PLAN | CENTRAL LEADER |
| QM | | Quercus muhlenbergii Chinquapin Oak | 2.5" Caliper | SEE PLAN | CENTRAL LEADER |
| QR | | Quercus rubra Northern Red Oak | 2.5" Caliper | SEE PLAN | CENTRAL LEADER |
| TD | | Taxodium distichum Common Baldcypress | 2.5" Caliper | SEE PLAN | CENTRAL LEADER |
| TM | | Taxus x media 'Hicksii' Hicksi Yew | 24" Height | SEE PLAN | FULL IN POT |
| TT | | Taxus x media 'Tauntonii' Taunton Yew | 24" Height | SEE PLAN | FULL IN POT |
| TO | | Thuja occidentalis 'Green Giant' Green Giant Arborvitae | 8" Height | SEE PLAN | FULL IN POT |
| VB | | Viburnum x burkwoodii Burkwood Viburnum | 36" Height | SEE PLAN | FULL IN POT |
| VC | | Viburnum caryocarpum Koreanspic Viburnum | 24" Height | SEE PLAN | FULL IN POT |
| VJ | | Viburnum x juddii Judd Viburnum | 30" Height | SEE PLAN | FULL IN POT |
| VM | | Vincetoxicum Myrtle | 50/Flat | SEE PLAN | FULL IN POT |
| VP | | Viburnum prunifolium Black Haw Viburnum | 48" Height | SEE PLAN | B&B - MULTI-STEM |
| SC | | GREEN ROOF - 1'x2' Sedum Tile Mix Sedum acre 'Aurea', Sedum album 'Coral Carpet', Sedum caucolicum Pink, Sedum elaeagnanum 'Weihenstephaner Gold', Sedum hybridum 'Czar's Gold', Sedum kamtschaticum, Sedum rupestre, Sedum saxatile, Sedum sparganium sp., Sedum spurium 'Voodoo' | | SEE PLAN | 1' x 2' CARPET TILE |

LANDSCAPE SYMBOLOGY



NOTE:
SEE SHEET L104 FOR LANDSCAPE SPECIFICATIONS AND
LANDSCAPE DETAILS.

LANDSCAPE PLAN
 THE VILLAGE AT PLANK ROAD
 WASHINGTON TOWNSHIP
 PLAINFIELD, INDIANA

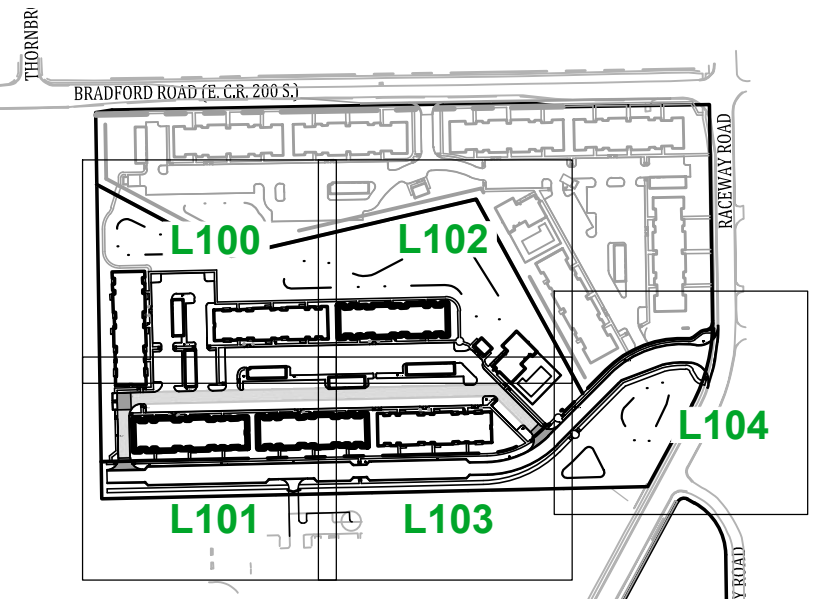
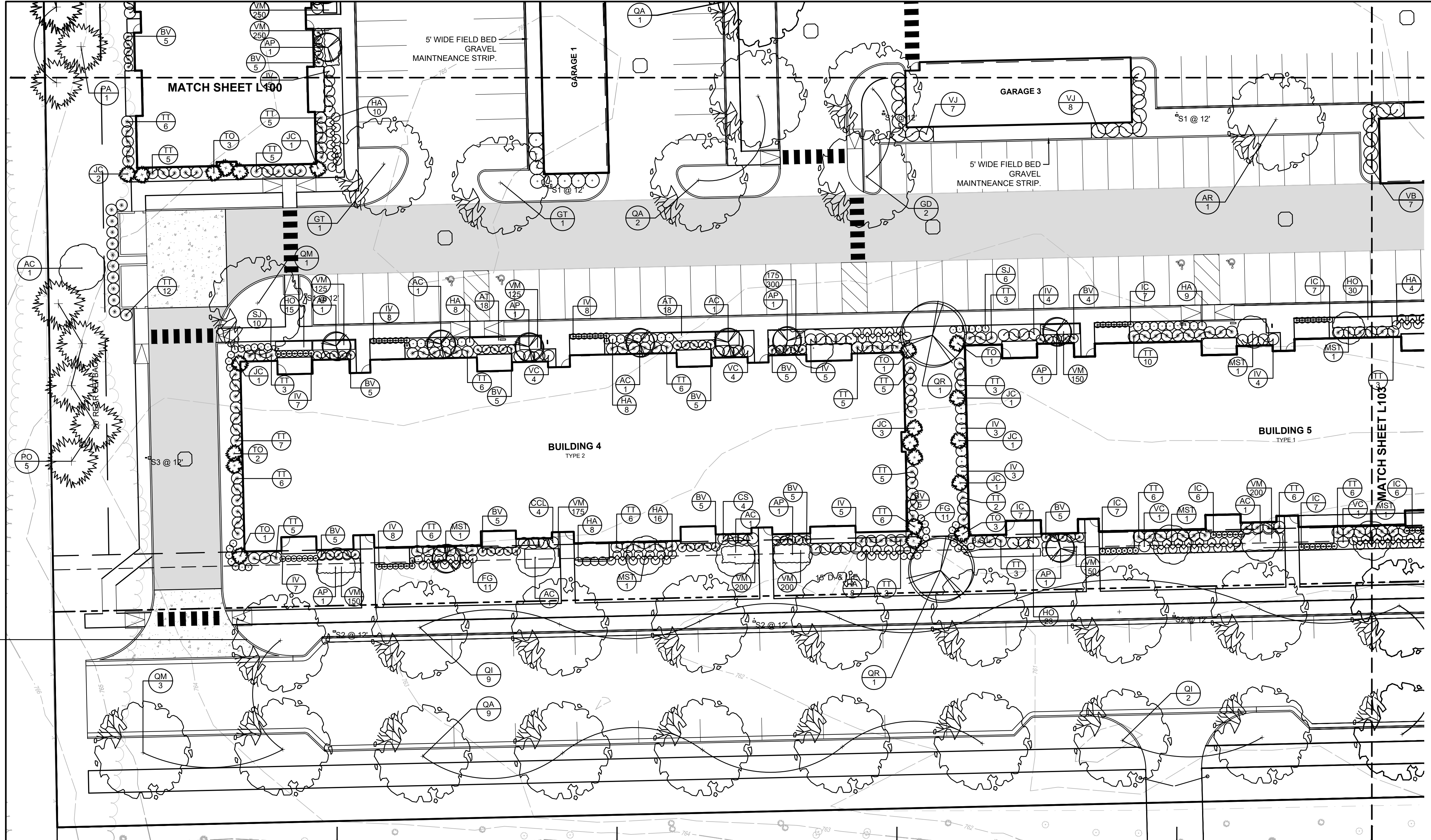
NOT FOR CONSTRUCTION

BANNING ENGINEERING
 853 COLUMBIA ROAD, SUITE #101
 PLAINFIELD, IN 46166
 BUS: (317) 707-3700 FAX: (317) 707-3800
 E-MAIL: Banning@BanningEngineering.com
 WEB: www.BanningEngineering.com

Project No: 21233-B
Sheet No:

L100





KEYMAP
SCALE: 1" = 400'

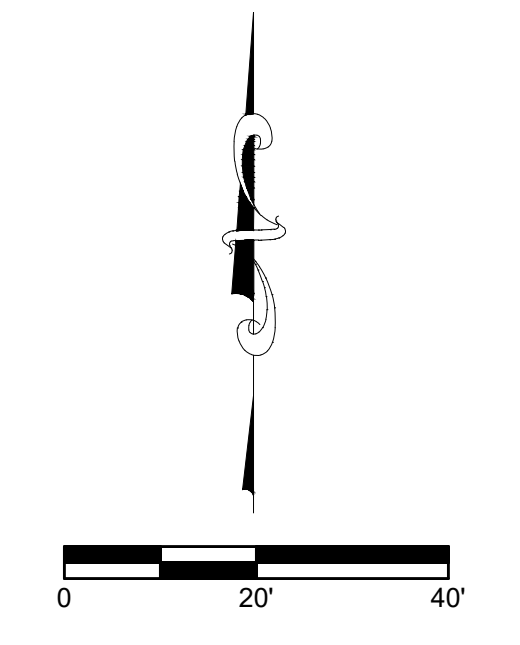
LANDSCAPE SYMBOLOLOGY

- CANOPY TREE
- ORNAMENTAL TREE
- EVERGREEN TREE
- DECIDUOUS SHRUB
- EVERGREEN SHRUB
- SPECIES IDENTIFIER/
PLANT COUNT

NOTE: SEE SHEET L104 FOR LANDSCAPE SPECIFICATIONS AND LANDSCAPE DETAILS.

| PLANT SCHEDULE | | | | | |
|----------------|-----|---|--------------|----------|---|
| KEY | QTY | PLANT NAME BOTANICAL NAME COMMON NAME | SIZE | SPACING | REMARKS |
| AC | | Amelanchier canadensis Serviceberry | 8' Height | SEE PLAN | FULL, DENSE BRANCHING, WIDTH NOT LESS THAN 60' OF HEIGHT - MULTI-STEM |
| APo | | Andromeda polifolia Bog Andromeda | 8' Height | SEE PLAN | FULL IN POT |
| AP | | Acer palmatum 'Bloodgood' Bloodgood Maple | 2.5" Height | SEE PLAN | FULL, DENSE BRANCHING, WIDTH NOT LESS THAN 60' OF HEIGHT |
| AO | | Acer rubrum 'October Glory' October Glory Red Maple | 2.5" Caliper | SEE PLAN | CENTRAL LEADER |
| AR | | Acer rubrum 'Autumn Blaze' Red Sunset Maple | 2.5" Caliper | SEE PLAN | CENTRAL LEADER |
| BV | | Buxus x koreana 'Green Velvet' Green Velvet Boxwood | 18" Height | SEE PLAN | FULL IN POT |
| CCL | | Caryopteris x clandonensis 'Blue Mist' Blue Mist Spirea | 3 Gallon | SEE PLAN | FULL IN POT |
| CS | | Cornus sericea Red Twig Dogwood | 24" Height | SEE PLAN | FULL IN POT |
| FG | | Fothergilla gardenii Dwarf Fothergilla | 18" Height | SEE PLAN | FULL IN POT |
| GD | | Gymnocladus dioica Kentucky Coffeetree | 2.5" Caliper | SEE PLAN | CENTRAL LEADER |
| GT | | Gleditsia tricanthos inermis 'Skycolor' Skycolor Honeylocust | 2.5" Caliper | SEE PLAN | CENTRAL LEADER |
| HA | | Hydrangea arborescens 'Annabelle' Annabelle Hydrangea | 3 Gallon | SEE PLAN | FULL IN POT |
| IV | | Ilex verticillata 'Winter Red' Winter Red Female Winterberry | 24" Height | SEE PLAN | FULL IN POT |
| JC | | Juniperus chinensis 'Hetzl' Hetzl Columnar Juniper | 6" Height | SEE PLAN | FULL IN POT |
| LM | | Liriodendron muscari Big Blue Lilytuff | 1 Gallon | SEE PLAN | FULL IN POT |
| MD | | Microbiota decussata Siberian Cypress | 2 Gallon | SEE PLAN | FULL IN POT |
| MS | | Miscanthus sinensis 'Gracillimus' Maiden Grass | 5 Gallon | SEE PLAN | FULL IN POT |
| MST | | Magnolia stellata Star Magnolia | 2.5" Caliper | SEE PLAN | FULL, DENSE BRANCHING, WIDTH NOT LESS THAN 60' OF HEIGHT |

| PLANT SCHEDULE | | | | | |
|----------------|-----|---|--------------|----------|---------------------|
| KEY | QTY | PLANT NAME BOTANICAL NAME COMMON NAME | SIZE | SPACING | REMARKS |
| PA | | Picea abies Norway Spruce | 6' Height | SEE PLAN | CENTRAL LEADER |
| PO | | Picea omorika Serbian Spruce | 6' Height | SEE PLAN | CENTRAL LEADER |
| QA | | Quercus alba White Oak | 2.5" Caliper | SEE PLAN | CENTRAL LEADER |
| QB | | Quercus bicolor Swamp White Oak | 2.5" Caliper | SEE PLAN | CENTRAL LEADER |
| QM | | Quercus muhlenbergii Chinquapin Oak | 2.5" Caliper | SEE PLAN | CENTRAL LEADER |
| QR | | Quercus rubra Northern Red Oak | 2.5" Caliper | SEE PLAN | CENTRAL LEADER |
| TD | | Taxodium disticum Common Baldcypress | 2.5" Caliper | SEE PLAN | CENTRAL LEADER |
| TM | | Taxus x media 'Hicksii' Hicksii Yew | 24" Height | SEE PLAN | FULL IN POT |
| TT | | Taxus x media 'Tauntonii' Tauntoni Yew | 24" Height | SEE PLAN | FULL IN POT |
| TO | | Thuja occidentalis 'Green Giant' Green Giant Arborvitae | 8' Height | SEE PLAN | FULL IN POT |
| VB | | Viburnum x burkwoodii Burkwood Viburnum | 36" Height | SEE PLAN | FULL IN POT |
| VC | | Viburnum carlesii Koreanspice Viburnum | 24" Height | SEE PLAN | FULL IN POT |
| VJ | | Viburnum x juddii Judd Viburnum | 30" Height | SEE PLAN | FULL IN POT |
| VM | | Vinca minor Myrtle | 50/Flat | SEE PLAN | FULL IN POT |
| VP | | Viburnum prunifolium Black Haw Viburnum | 48" Height | SEE PLAN | B&B - MULTI-STEM |
| SC | | GREEN ROOF - 1'x 2' Sedum Tile Mix Sedum acre 'Aurea', Sedum album 'Coral Carpet', Sedum caucolicum Pink, Sedum etlaecombianum 'Weiherstephaner Gold', Sedum hybridum 'Czar's Gold', Sedum kamtschaticum, Sedum rupestre, Sedum sexangulare, Sedum spurium sp., Sedum spurium 'Voodoo' | | SEE PLAN | 1' x 2' CARPET TILE |



Date: _____
 Revisions: _____
 Sym: _____
 Designed: S.J.H.R.R.L.
 Drawn: S.J.H.
 Checked: R.R.L.
 Scale: 1"=20'
 Date: 09-30-2025

LANDSCAPE PLAN
THE VILLAGE AT PLANK ROAD
WASHINGTON TOWNSHIP
PLAINFIELD, INDIANA

NOT FOR CONSTRUCTION

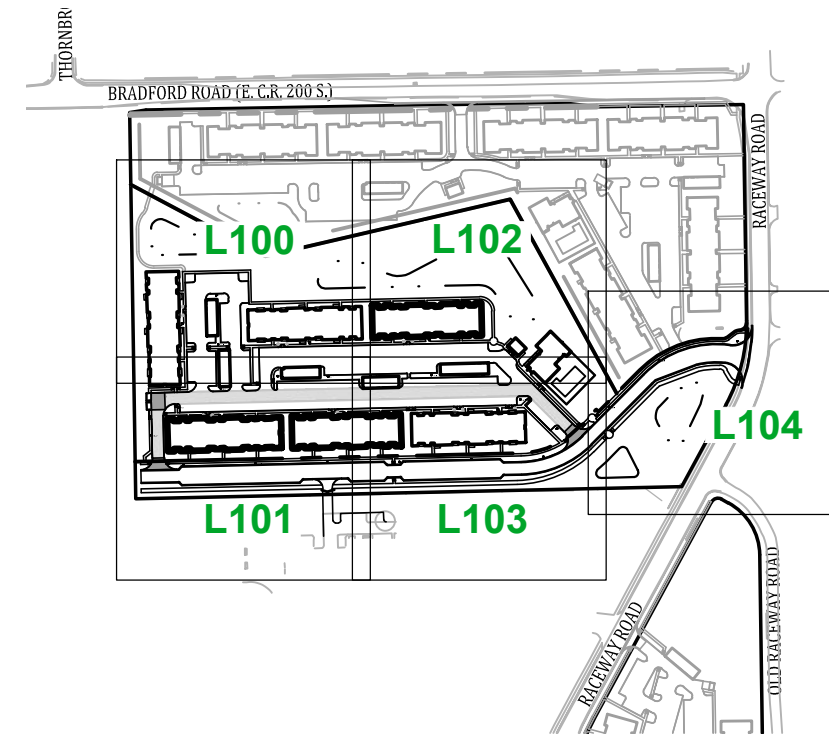
BANNING ENGINEERING
 853 COLUMBIA ROAD, SUITE #101
 PLAINFIELD, IN 46166
 BUS: (317) 707-3700 FAX: (317) 707-3800
 E-MAIL: Banning@BanningEngineering.com
 WEB: www.BanningEngineering.com

Project No: 21233-B
 Sheet No: L101

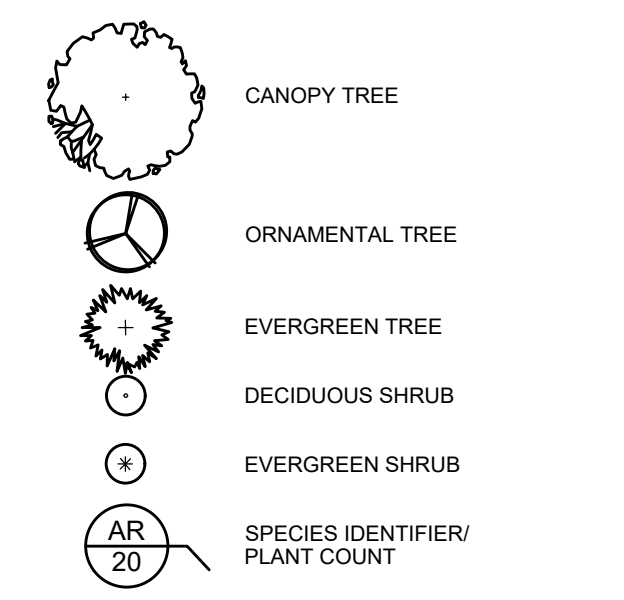
s:\p\2021\21233-B\Engineering\Cadd\Sheet Files\Development\Plans\21233B_dp_indisp.dwg September 30, 2025 11:04 AM

| PLANT SCHEDULE | | | | | |
|----------------|-----|---|--------------|----------|---|
| KEY | QTY | PLANT NAME BOTANICAL NAME COMMON NAME | SIZE | SPACING | REMARKS |
| AC | | Amelanchier canadensis Serviceberry | 8' Height | SEE PLAN | FULL, DENSE BRANCHING, WIDTH NOT LESS THAN 60' OF HEIGHT - MULTI-STEM |
| APo | | Andromeda polifolia Bog Andromeda | 8' Height | SEE PLAN | FULL IN POT |
| AP | | Acer palmatum 'Bloodgood' Bloodgood Maple | 2.5" Height | SEE PLAN | FULL, DENSE BRANCHING, WIDTH NOT LESS THAN 60' OF HEIGHT |
| AO | | Acer rubrum 'October Glory' October Glory Red Maple | 2.5" Caliper | SEE PLAN | CENTRAL LEADER |
| AR | | Acer rubrum 'Autumn Blaze' Red Sunset Maple | 2.5" Caliper | SEE PLAN | CENTRAL LEADER |
| BV | | Buxus x koreana 'Green Velvet' Green Velvet Boxwood | 18" Height | SEE PLAN | FULL IN POT |
| CCL | | Caryopteris x clandonensis 'Blue Mist' Blue Mist Spirea | 3 Gallon | SEE PLAN | FULL IN POT |
| CS | | Cornus sericea Red Twig Dogwood | 24" Height | SEE PLAN | FULL IN POT |
| FG | | Fothergilla gardenii Dwarf Fothergilla | 18" Height | SEE PLAN | FULL IN POT |
| GD | | Gymnocladus dioica Kentucky Coffeetree | 2.5" Caliper | SEE PLAN | CENTRAL LEADER |
| GT | | Gleditsia tricanthos inermis 'Skycole' Skyline Honeylocust | 2.5" Caliper | SEE PLAN | CENTRAL LEADER |
| HA | | Hydrangea arborescens 'Annabelle' Annabelle Hydrangea | 3 Gallon | SEE PLAN | FULL IN POT |
| IV | | Ilex verticillata 'Winter Red' Winter Red Female Winterberry | 24" Height | SEE PLAN | FULL IN POT |
| JC | | Juniperus chinensis 'Helzi' Hetzi Columnar Juniper | 6" Height | SEE PLAN | FULL IN POT |
| LM | | Liriope muscari Big Blue Lilytuft | 1 Gallon | SEE PLAN | FULL IN POT |
| MD | | Microbiota decussata Siberian Cypress | 2 Gallon | SEE PLAN | FULL IN POT |
| MS | | Miscanthus sinensis 'Gracillimus' Maiden Grass | 5 Gallon | SEE PLAN | FULL IN POT |
| MST | | Magnolia stellata Star Magnolia | 2.5" Caliper | SEE PLAN | FULL, DENSE BRANCHING, WIDTH NOT LESS THAN 60' OF HEIGHT |

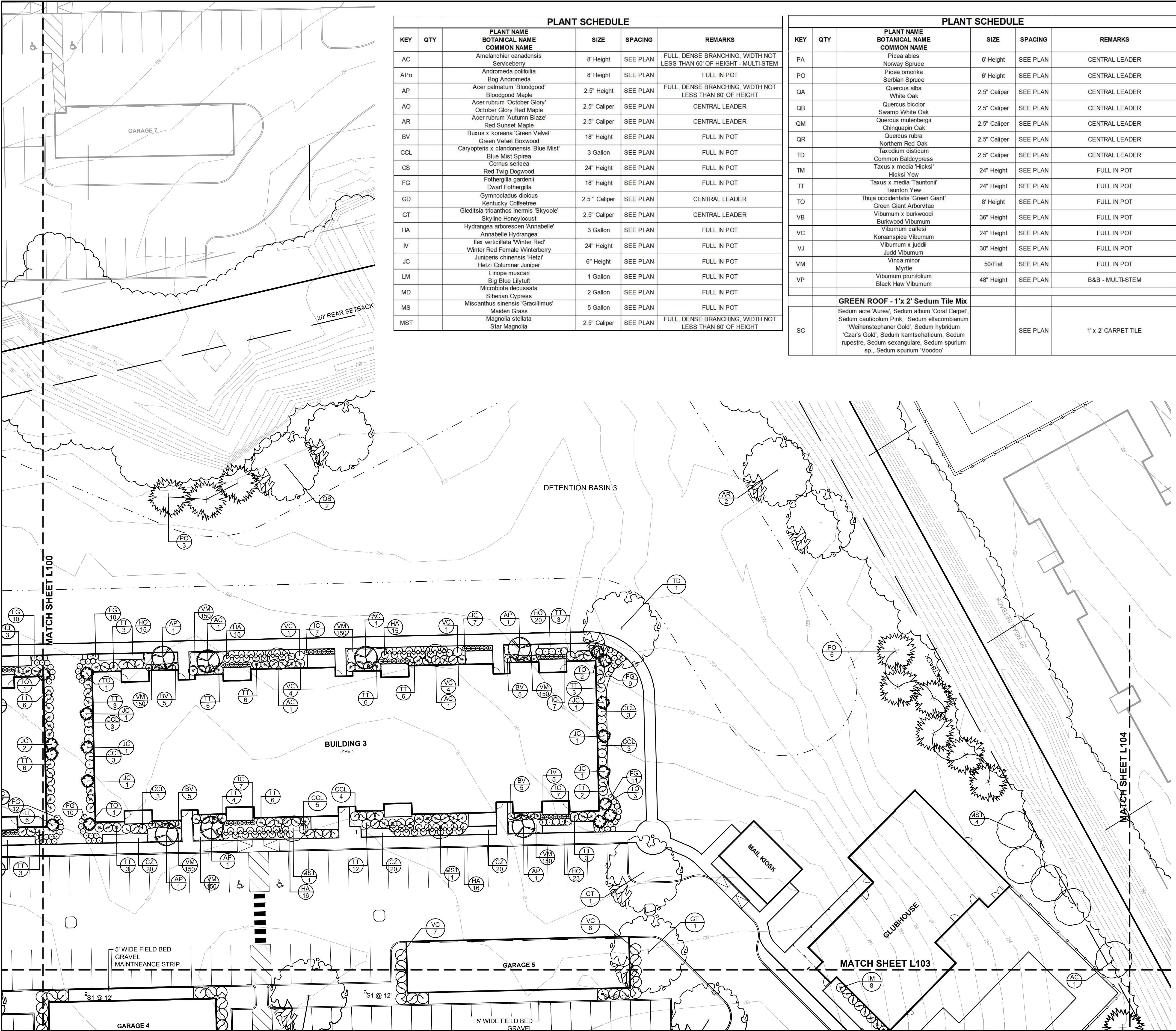
| PLANT SCHEDULE | | | | | |
|----------------|-----|---|--------------|----------|---------------------|
| KEY | QTY | PLANT NAME BOTANICAL NAME COMMON NAME | SIZE | SPACING | REMARKS |
| PA | | Picea abies Norway Spruce | 6' Height | SEE PLAN | CENTRAL LEADER |
| PO | | Picea omorika Serbian Spruce | 6' Height | SEE PLAN | CENTRAL LEADER |
| QA | | Quercus alba White Oak | 2.5" Caliper | SEE PLAN | CENTRAL LEADER |
| QB | | Quercus bicolor Swamp White Oak | 2.5" Caliper | SEE PLAN | CENTRAL LEADER |
| QM | | Quercus muhlenbergii Chinquapin Oak | 2.5" Caliper | SEE PLAN | CENTRAL LEADER |
| QR | | Quercus rubra Northern Red Oak | 2.5" Caliper | SEE PLAN | CENTRAL LEADER |
| TD | | Taxodium disticum Common Baldcypress | 2.5" Caliper | SEE PLAN | CENTRAL LEADER |
| TM | | Taxus x media 'Hicksi' Hicksi Yew | 24" Height | SEE PLAN | FULL IN POT |
| TT | | Taxus x media 'Tauntonii' Taunton Yew | 24" Height | SEE PLAN | FULL IN POT |
| TO | | Thuja occidentalis 'Green Giant' Green Giant Arborvitae | 8' Height | SEE PLAN | FULL IN POT |
| VB | | Viburnum x burkwoodii Burkwood Viburnum | 36" Height | SEE PLAN | FULL IN POT |
| VC | | Viburnum carlesii Koreanspice Viburnum | 24" Height | SEE PLAN | FULL IN POT |
| VJ | | Viburnum x juddii Judd Viburnum | 30" Height | SEE PLAN | FULL IN POT |
| VM | | Vinca minor Myrtle | 50/Flat | SEE PLAN | FULL IN POT |
| VP | | Viburnum prunifolium Black Haw Viburnum | 48" Height | SEE PLAN | B&B - MULTI-STEM |
| SC | | GREEN ROOF - 1'x 2' Sedum Tile Mix Sedum acre 'Aurea', Sedum album 'Coral Carpet', Sedum cautucolum Pink, Sedum ellacombianum 'Weihestephaner Gold', Sedum hybridum 'Czar's Gold', Sedum kamtschaticum, Sedum rupestre, Sedum sexangulare, Sedum spurium sp., Sedum spurium 'Voodoo' | | SEE PLAN | 1' x 2' CARPET TILE |



LANDSCAPE SYMBOLOGY

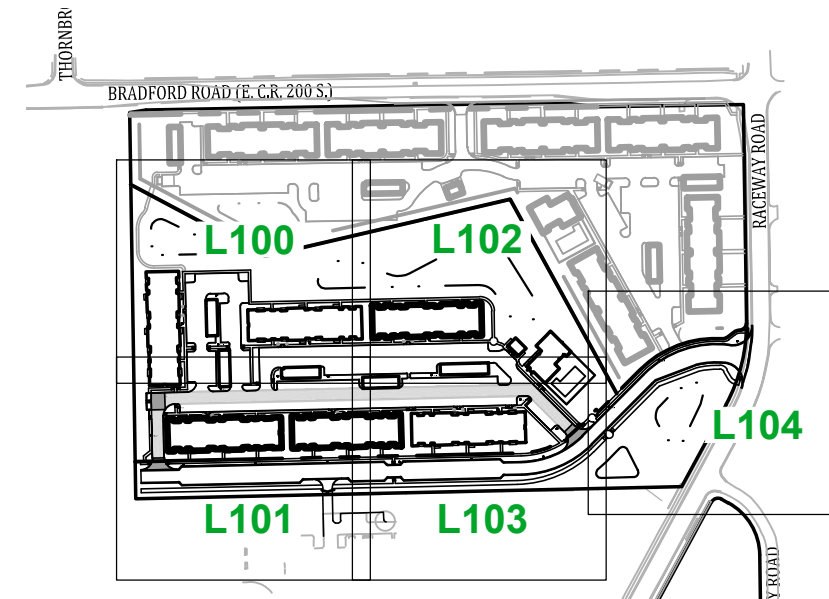
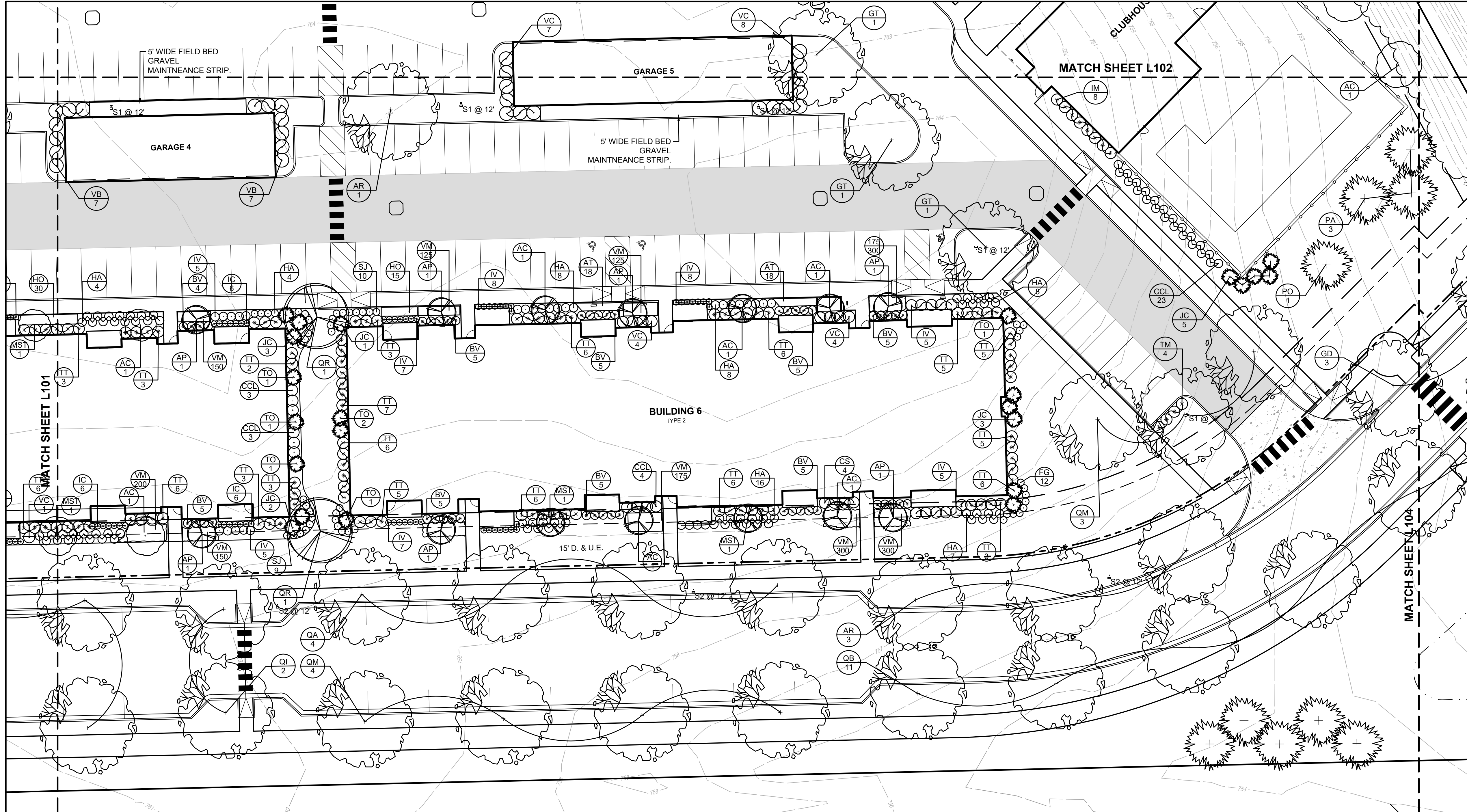


NOTE: SEE SHEET L104 FOR LANDSCAPE SPECIFICATIONS AND LANDSCAPE DETAILS.



P:\2021\21233-B\Engineering\Cadd\Sheet Files\Development\Plns\21233B_dp_indisp.dwg September 30, 2025 11:04 AM
 Shows P:\2021\21233-B\Engineering\Cadd\Sheet Files\Development\Plns\21233B_dp_indisp.dwg September 30, 2025 11:04 AM

| | |
|---|---|
| Revisions Date Sym. S.H/REL Drawn: S.J.H Checked: R.R.L Scale: 1"=20' Date: 09-30-2025 | <p>LANDSCAPE PLAN THE VILLAGE AT PLANK ROAD WASHINGTON TOWNSHIP PLAINFIELD, INDIANA</p> <p style="font-size: 2em; font-weight: bold; transform: rotate(-45deg);">NOT FOR CONSTRUCTION</p> <p style="font-size: 1.5em; font-weight: bold;">BANNING ENGINEERING</p> <p> 853 COLUMBIA ROAD, SUITE #101 PLAINFIELD, IN 46166 BUS: (317) 707-3700 FAX: (317) 707-3800 E-MAIL: Banning@BanningEngineering.com WEB: www.BanningEngineering.com </p> |
| Project No: 21233-B Sheet No: | <p style="font-size: 1.5em; font-weight: bold;">L102</p> <p style="font-size: 0.8em;"> Indiana 811 Know what's below. Call before you dig. </p> |



KEYMAP
SCALE: 1" = 400'

LANDSCAPE SYMBOLOLOGY

- CANOPY TREE
- ORNAMENTAL TREE
- EVERGREEN TREE
- DECIDUOUS SHRUB
- EVERGREEN SHRUB
- SPECIES IDENTIFIER/
PLANT COUNT

NOTE: SEE SHEET L104 FOR LANDSCAPE SPECIFICATIONS AND LANDSCAPE DETAILS.

| | | | | | | | | | |
|---------|---------|--------|-----|----------|-----|--------|--------|-------|------------|
| Design: | SJH/REL | Drawn: | SJH | Checked: | RLL | Scale: | 1"=20' | Date: | 09-30-2025 |
| Sym: | | | | | | | | | |

LANDSCAPE PLAN
THE VILLAGE AT PLANK ROAD
WASHINGTON TOWNSHIP
PLAINFIELD, INDIANA

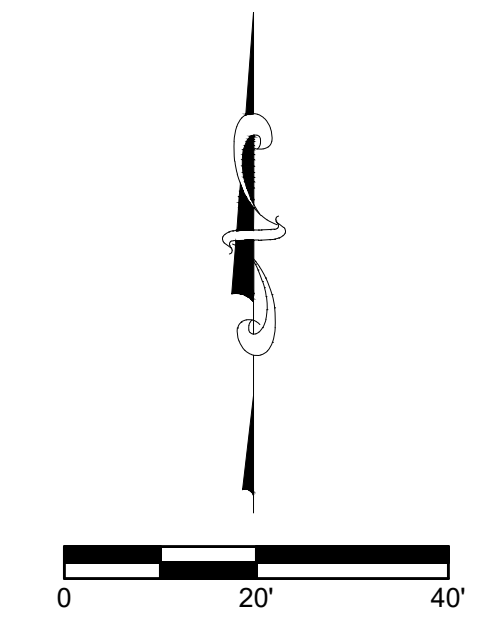
NOT FOR CONSTRUCTION

PLANT SCHEDULE

| KEY | QTY | PLANT NAME BOTANICAL NAME COMMON NAME | SIZE | SPACING | REMARKS |
|-----|-----|---|--------------|----------|---|
| AC | | Amelanchier canadensis Serviceberry | 8' Height | SEE PLAN | FULL, DENSE BRANCHING, WIDTH NOT LESS THAN 60' OF HEIGHT - MULTI-STEM |
| APo | | Andromeda polifolia Bog Andromeda | 8' Height | SEE PLAN | FULL IN POT |
| AP | | Acer palmatum 'Bloodgood' Bloodgood Maple | 2.5" Height | SEE PLAN | FULL, DENSE BRANCHING, WIDTH NOT LESS THAN 60' OF HEIGHT |
| AO | | Acer rubrum 'October Glory' October Glory Red Maple | 2.5" Caliper | SEE PLAN | CENTRAL LEADER |
| AR | | Acer rubrum 'Autumn Blaze' Red Sunset Maple | 2.5" Caliper | SEE PLAN | CENTRAL LEADER |
| BV | | Buxus x koreana 'Green Velvet' Green Velvet Boxwood | 18" Height | SEE PLAN | FULL IN POT |
| CCL | | Caryopteris x glandonensis 'Blue Mist' Blue Mist Spirea | 3 Gallon | SEE PLAN | FULL IN POT |
| CS | | Cornus sericea Red Twig Dogwood | 24" Height | SEE PLAN | FULL IN POT |
| FG | | Fothergilla gardenii Dwarf Fothergilla | 18" Height | SEE PLAN | FULL IN POT |
| GD | | Gymnocladus dioica Kentucky Coffeetree | 2.5" Caliper | SEE PLAN | CENTRAL LEADER |
| GT | | Gleditsia tricanthos inermis 'Skycolor' Skyline Honeylocust | 2.5" Caliper | SEE PLAN | CENTRAL LEADER |
| HA | | Hydrangea arborescens 'Annabelle' Annabelle Hydrangea | 3 Gallon | SEE PLAN | FULL IN POT |
| IV | | Ilex verticillata 'Winter Red' Winter Red Female Winterberry | 24" Height | SEE PLAN | FULL IN POT |
| JC | | Juniperus chinensis 'Hetzi' Hetzi Columnar Juniper | 6" Height | SEE PLAN | FULL IN POT |
| LM | | Liriodendron muscari Big Blue Lilytuff | 1 Gallon | SEE PLAN | FULL IN POT |
| MD | | Microbiota decussata Siberian Cypress | 2 Gallon | SEE PLAN | FULL IN POT |
| MS | | Miscanthus sinensis 'Gracillimus' Maiden Grass | 5 Gallon | SEE PLAN | FULL IN POT |
| MST | | Magnolia stellata Star Magnolia | 2.5" Caliper | SEE PLAN | FULL, DENSE BRANCHING, WIDTH NOT LESS THAN 60' OF HEIGHT |

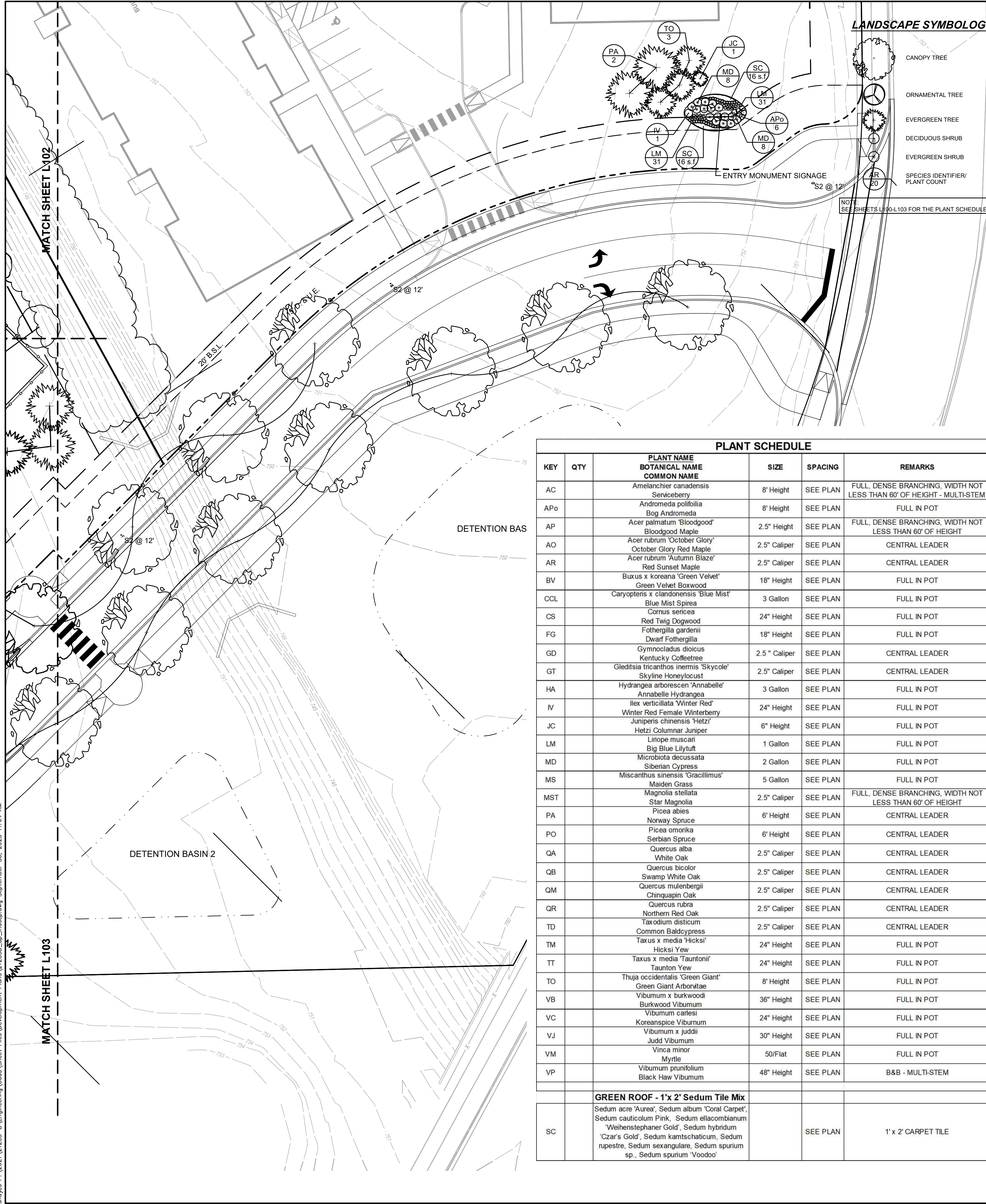
PLANT SCHEDULE

| KEY | QTY | PLANT NAME BOTANICAL NAME COMMON NAME | SIZE | SPACING | REMARKS |
|-----|-----|---|--------------|----------|---------------------|
| PA | | Picea abies Norway Spruce | 6' Height | SEE PLAN | CENTRAL LEADER |
| PO | | Picea omorika Serbian Spruce | 6' Height | SEE PLAN | CENTRAL LEADER |
| QA | | Quercus alba White Oak | 2.5" Caliper | SEE PLAN | CENTRAL LEADER |
| QB | | Quercus bicolor Swamp White Oak | 2.5" Caliper | SEE PLAN | CENTRAL LEADER |
| QM | | Quercus muhlenbergii Chinquapin Oak | 2.5" Caliper | SEE PLAN | CENTRAL LEADER |
| QR | | Quercus rubra Northern Red Oak | 2.5" Caliper | SEE PLAN | CENTRAL LEADER |
| TD | | Taxodium disticum Common Baldcypress | 2.5" Caliper | SEE PLAN | CENTRAL LEADER |
| TM | | Taxus x media 'Hicksi' Hicksi Yew | 24" Height | SEE PLAN | FULL IN POT |
| TT | | Taxus x media 'tauntonii' Taunton Yew | 24" Height | SEE PLAN | FULL IN POT |
| TO | | Thuja occidentalis 'Green Giant' Green Giant Arborvitae | 8' Height | SEE PLAN | FULL IN POT |
| VB | | Viburnum x burkwoodi Burkwood Viburnum | 36" Height | SEE PLAN | FULL IN POT |
| VC | | Viburnum carlesii Koreanspice Viburnum | 24" Height | SEE PLAN | FULL IN POT |
| VJ | | Viburnum x juddii Judd Viburnum | 30" Height | SEE PLAN | FULL IN POT |
| VM | | Vinca minor Myrtle | 50/Flat | SEE PLAN | FULL IN POT |
| VP | | Viburnum prunifolium Black Haw Viburnum | 48" Height | SEE PLAN | B&B - MULTI-STEM |
| SC | | GREEN ROOF - 1'x 2' Sedum Tile Mix Sedum acre 'Aurea', Sedum album 'Coral Carpet', Sedum cauticolum Pink, Sedum eliacombianum 'Weihestephaner Gold', Sedum hybridum 'Czar's Gold', Sedum kamtschaticum, Sedum rupestre, Sedum sexangulare, Sedum spurium sp., Sedum spurium 'Voodoo' | | SEE PLAN | 1' x 2' CARPET TILE |



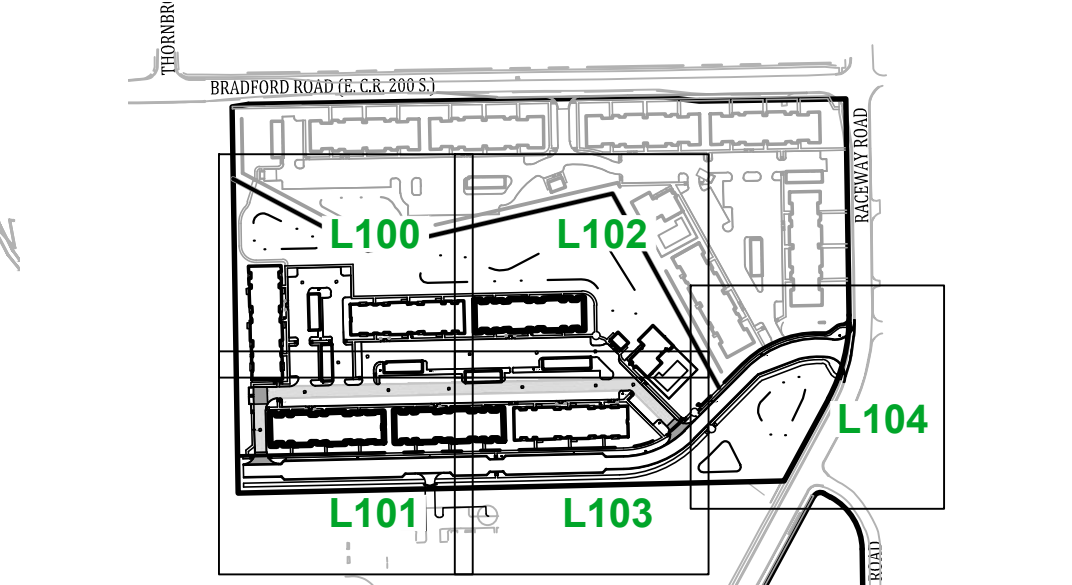
Project No: 21233-B
Sheet No:

P:\2021\21233-B\Engineering\Cadd\Sheet Files\Development\Plns\21233B_dp_indisp.dwg September 30, 2025 11:04 AM

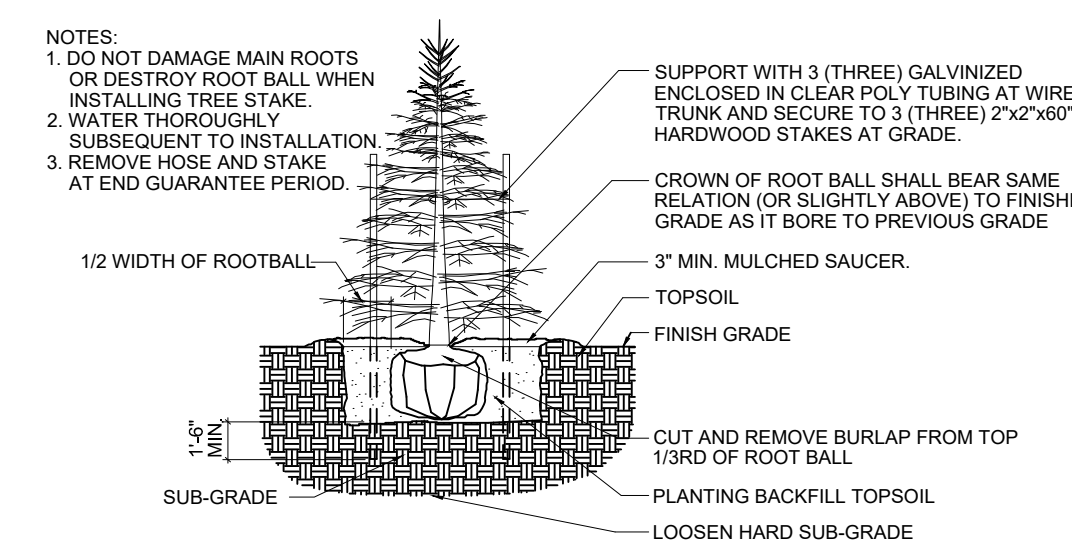


LANDSCAPE SYMBOLOGY

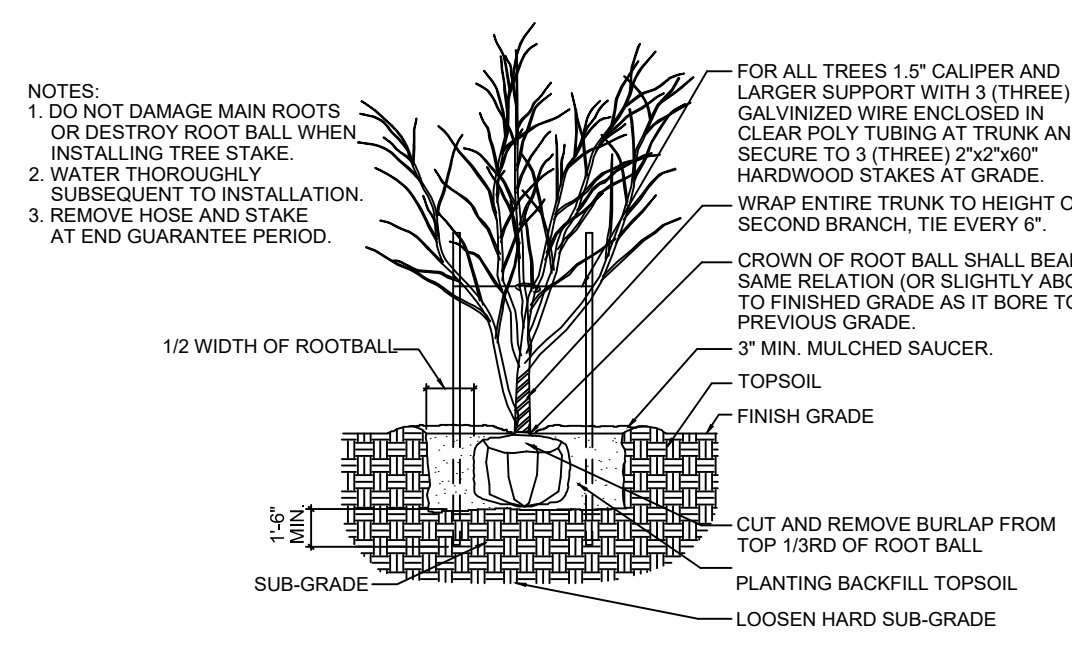
- CANOPY TREE
- ORNAMENTAL TREE
- EVERGREEN TREE
- DECIDUOUS SHRUB
- EVERGREEN SHRUB
- SPECIES IDENTIFIER/PLANT COUNT



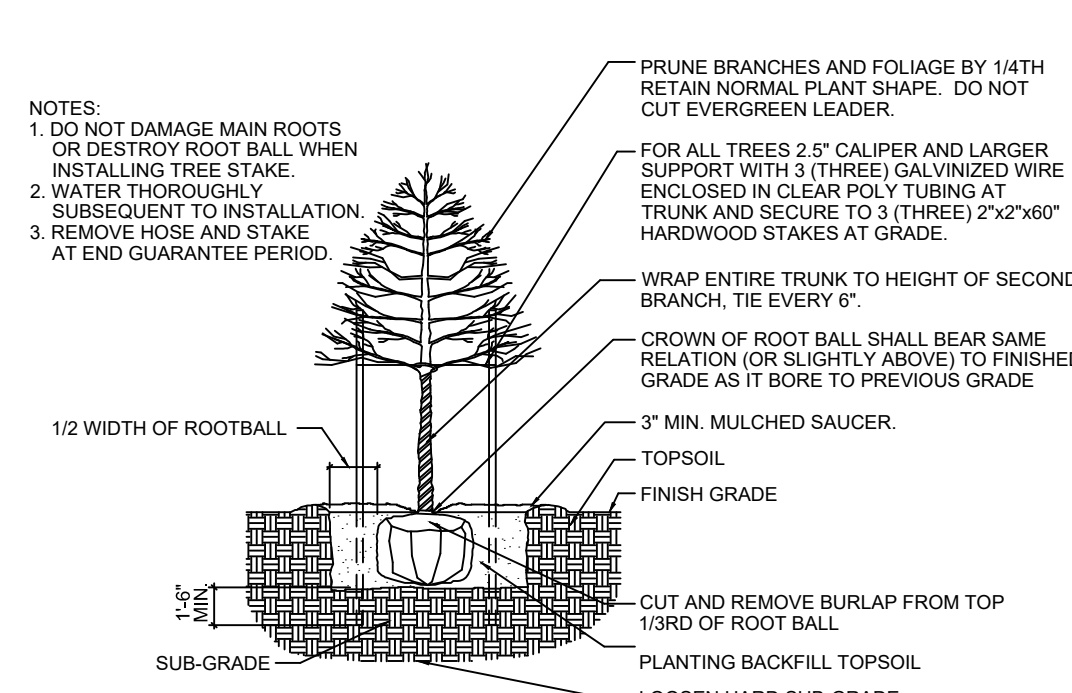
KEYMAP
SCALE: 1" = 400'



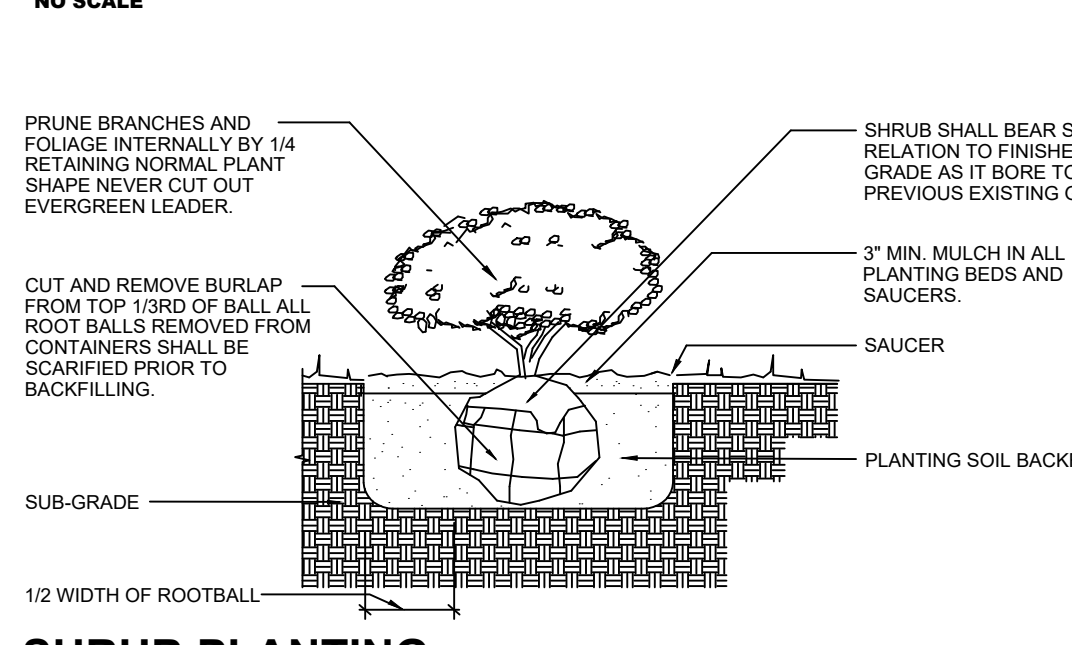
EVERGREEN TREE PLANTING
NO SCALE



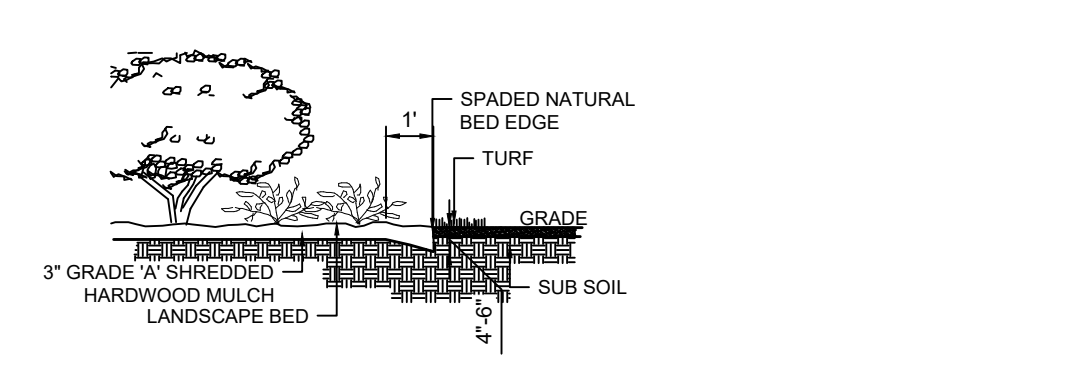
ORNAMENTAL TREE PLANTING
NO SCALE



CANOPY TREE PLANTING
NO SCALE



SHRUB PLANTING
NO SCALE



NATURAL LANDSCAPE BED EDGE
NO SCALE

LANDSCAPE SPECIFICATIONS

- GENERAL NOTES:
- ALL UTILITIES SHALL BE LOCATED AND MARKED/FLAGGED BEFORE BEGINNING LANDSCAPE WORK RELOCATED PLANTS THAT ARE UNDER OR OVER UTILITIES. THE RELOCATED PLANTS TO BE APPROVED BY OWNER AND/OR LANDSCAPE ARCHITECT/DESIGNER PRIOR TO INSTALLATION. CONTRACTOR SHALL NOTIFY UTILITY LOCATE SERVICE (811) A MINIMUM OF TWO WORKING DAYS PRIOR TO EXCAVATION.
 - UTILITY LOCATION NOTE: ALL LOCATIONS SHOWN ON PLANS ARE APPROXIMATE AND BASED ON PROVIDED INFORMATION BY SURVEYOR OR CIVIL ENGINEER OR OWNER AND OR MEASURED IN THE FIELD. IF DISCREPANCIES EXIST OR ARE PRESENT, CONTRACTOR SHALL NOTIFY OWNER, OWNERS REPRESENTATIVE AND LANDSCAPE ARCHITECT/DESIGNER PRIOR TO BEGINNING ANY WORK.
 - IN CASE OF DISCREPANCIES BETWEEN THE PLANS AND PLANT LIST, THE PLAN SHALL DICATE.
 - THESE SPECIFICATIONS COVER THE FURNISHING OF LABOR, PLANTS, EQUIPMENT, AND MATERIALS TO PERFORM LANDSCAPE OPERATIONS IN CONNECTION WITH THIS CONSTRUCTION PROJECT AT THE LOCATIONS SHOWN ON THE LANDSCAPE DRAWINGS.
 - PLANTS AND ALL LANDSCAPE MATERIAL TO BE STORED ON SITE WILL BE PLACED WHERE THEY ARE NOT IN CONFLICT WITH CONSTRUCTION OPERATIONS.
 - REMOVE AND CLEAN UP ALL DEBRIS AND REMOVE FROM SITE, REPAIR DAMAGED OR DISTURBED AREAS CAUSED BY LANDSCAPE CONTRACTOR.
 - TOPSOIL: TOPSOIL SHALL BE FRABLE, NATURAL LOAM, SURFACE SOIL AND FREE OF SUBSOIL, CLAY LUMPS, BRUSH, WEEDS, LITTER, ROOTS, STONES DOMESTIC AND AGRICULTURE FERTILIZERS, HERBICIDES, AND OTHER TOXIC MATERIALS HARMFUL TO PLANT GROWTH AND ENVIRONMENT. WASTE SOILS, BORROW, OR HEAVY CLAY BASED SOILS WILL NOT BE ACCEPTED. TOPSOIL SHALL HAVE A PH VALUE OF 6.0-7.4. SUBMIT SOIL SAMPLES, PH SAMPLES, PH LEVELS AND NPK ANALYSIS PRIOR TO DELIVERY.

- PLANTING NOTES:
- REMOVE WEEDS, ORGANIC MATTER, ROCKS LARGER THAN 1.5" FROM SOIL.
 - LANDSCAPE MATERIALS: FERTILIZER: GRANULAR NON-BURNING PRODUCT COMPOSED OF NOT LESS THAN 50% ORGANIC SLOW ACTING, GUARANTEED ANALYSIS PROFESSIONAL FERTILIZER: 20% NITROGEN, 10% PHOSPHORIC ACID, AND 5% POTASH BY WEIGHT OR SIMILARLY APPROVED COMPOSITION.
 - PLANTING BACKFILL SOIL: BACKFILL PLANT PITS WITH THE FOLLOWING TOPSOIL MIXTURE: 1 PART ON-SITE TOPSOIL, 1 PART IMPORTED TOPSOIL, 1 PART COMPOST AND 1/2 POUND PLANT SPECIFIED FERTILIZER PER CUBIC YARD.
 - PLANT MATERIALS: PROVIDE TREES AND SHRUBS AS INDICATED. COMPLY WITH SIZING AND GRADING STANDARDS OF "AMERICAN STANDARD FOR NURSERY STOCK". PROVIDE ONLY SOUND, HEALTHY VIGOROUS PLANTS FREE FROM DEFECTS, DISFIGURING KNOTS, SUNSCOLD INJURIES, FROST CRACKS, PLANT DISEASES, INSECTS OR ANY OTHER FORM OF DISEASE OR INFESTATION. ALL PLANTS SHALL HAVE FULLY DEVELOPED FORM WITHOUT VOIDS OR OPEN SPACES.
 - NO SUBSTITUTIONS OF PLANT MATERIAL WILL NOT BE ALLOWED. IF PLANTS ARE NOT AVAILABLE, THE CONTRACTOR SHALL NOTIFY LANDSCAPE ARCHITECT/DESIGNER, OWNERS REPRESENTATIVE IN WRITING. ALL PLANTS SHALL BE INSPECTED AND TAGGED WITH PROJECT I.D. AT NURSERY OR CONTRACTORS OPERATIONS PRIOR TO MOVING TO JOB SITE. PLANTS MAY BE INSPECTED AND APPROVED OR REJECTED ON THE JOB SITE BY LANDSCAPE ARCHITECT/DESIGNER OR OWNERS REPRESENTATIVE.
 - LANDSCAPE ARCHITECT/DESIGNER OR OWNERS REPRESENTATIVE RESERVES THE RIGHT TO REJECT ANY AND ALL PLANT MATERIALS DURING THE COURSE OF THE PROJECT.
 - PLANTING BED MULCH: 3 INCHES OF GRADE 'A' SHREDDED HARDWOOD MULCH WHERE PLANTING BED ADJOINS EITHER PAVEMENT OR TURF.
 - PLANTING BED FABRIC: DEWITT PRO 5 WEED BARRIER. INSTALL ONLY IN PLANTING BEDS.
 - SEE PLANTING DETAILS FOR PLANTING, PRUNING AND STAKING REQUIREMENTS.

- SEEDING AND SODDING PREPARATION:
- LANDSCAPE CONTRACTOR TO FINE GRADE AND PREPARE ALL SITE AREAS TO RECEIVE SODDING OR SEEDING. FINE GRADE SITE SMOOTH TO FINAL GRADING PLAN ELEVATIONS. FILL IN DEPRESSIONS, LOW SPOTS AND GRADE SMOOTH.
 - ALL TURF AREAS WITHIN LIMIT LINES TO RECEIVE 6" TOPSOIL PRIOR TO OPERATIONS. ONCE TOPSOIL HAS BEEN PLACED, CONSTRUCTION ACTIVITY OF ANY KIND (EXCLUDING LANDSCAPING) SHALL NOT BE PERMITTED ON OR ACROSS ANY PLANTING AREA.
 - TURF AREAS TO BE SCARIFIED/CULTIVATE TO A DEPTH OF 4" AND LIGHTLY ROLLED (NOT COMPACTED) PRIOR TO BEING SODDED OR SEEDING.
 - LAWNS TO BE FERTILIZED WITH 12-12-12 AT A RATE OF 10 LBS/1000 SQ.FT. PRIOR TO INSTALLATION.
 - WATER AND MAINTAIN GRASS STAND IS ESTABLISHED AND READY FOR MOWING AT A MINIMUM 4" HEIGHT. CONTRACTOR SHALL MAINTAIN LAWN FOR A PERIOD OF 60 DAYS BEYOND FINAL ACCEPTANCE BY MOWING AND WATERING AS REQUIRED TO MAINTAIN VIGOROUS GROWTH DURING ESTABLISHMENT.

- DIAMOND BLEND BLUEGRASS SOD - AMERITURF
- COMPLETE ALL OTHER LANDSCAPE PLANTINGS, MULCHING, FINE GRADING AND STAKING PRIOR TO SODDING LAWN AREAS.
 - PROVIDE SODDED LAWN FOR ALL LAWN AREAS UTILIZING AMER-TURF FRONT-RUNNER TURF TYPE TALL FESCUE BLEND SOD.
 - SOD BED SHALL BE IN A FIRM BUT UNCOMPACTED CONDITION WITH A RELATIVELY FINE TEXTURE AT TIME OF SODDING.
 - GROWING PERIOD: FALL GROWING SEASON AUGUST 15TH - SEPTEMBER 20TH. SPRING GROWING SEASON MARCH 20TH - APRIL 20TH.

PROJECT WARRANTY:

- CONTRACTOR SHALL WARRANT TREES, SHRUBS, AND PLANTS FOR A PERIOD OF ONE YEAR AFTER DATE OF SUBSTANTIAL COMPLETION AGAINST DEFECTS INCLUDING DEATH AND UNSATISFACTORY GROWTH EXCEPT FOR DEFECTS RESULTING FROM NEGLIGENCE BY THE OWNER, ABUSE OR DAMAGE BY OTHERS, OR UNUSUAL PHENOMENA OR INCIDENTS WHICH ARE BEYOND INSTALLERS CONTROL. REMOVE AND REPLACE TREES, SHRUBS OR OTHER PLANTS FOUND TO BE DEAD OR IN UNHEALTHY CONDITION DURING WARRANTY PERIOD. REPLACE TREES AND SHRUBS WHICH ARE IN DOUBTFUL CONDITION AT END OF WARRANTY PERIOD.

| NORTH PERIMETER PROPERTY LINE LANDSCAPE PLANTINGS LEVEL 1 PLANTING | | | SOUTH PERIMETER PROPERTY LINE LANDSCAPE PLANTINGS LEVEL 1 LANDSCAPE PLANTING | | |
|--|---|----------------------------|--|---|---------------------------|
| EVERGREEN TREE = 0.50 PTS | | | CANOPY TREE = 0.50 PTS | | |
| CANOPY TREE = 0.75 PTS | | | ORNAMENTAL TREE = 0.50 PTS | | |
| N1 | 2 | CANOPY TREE = 1.50 PTS | S1 | 1 | CANOPY TREE = 0.75 PTS |
| N2 | 1 | CANOPY TREE = 1.25 PTS | S2 | 2 | CANOPY TREE = 1.50 PTS |
| N3 | 5 | EVERGREEN TREES = 2.50 PTS | S3 | 2 | CANOPY TREE = 1.50 PTS |
| N4 | 4 | EVERGREEN TREES = 2.75 PTS | S4 | 2 | CANOPY TREE = 1.50 PTS |
| N5 | 1 | CANOPY TREE = 0.75 PTS | S5 | 2 | CANOPY TREE = 1.50 PTS |
| N6 | 1 | CANOPY TREE = 1.50 PTS | S6 | 2 | CANOPY TREE = 1.50 PTS |
| N7 | 2 | CANOPY TREE = 1.50 PTS | S7 | 2 | CANOPY TREE = 1.50 PTS |
| N8 | 1 | EVERGREEN TREES = 1.25 PTS | S8 | 2 | CANOPY TREE = 1.50 PTS |
| Plus any additional Existing Trees along Property Line | | | S9 | 2 | EVERGREEN TREE = 1.0 PTS |
| TOTAL POINTS SHOWN ON PLAN = 13.75 PTS | | | S10 | 3 | EVERGREEN TREE = 1.50 PTS |
| TOTAL POINTS REQUIRED = 13.0 PTS/LEVEL 1 | | | S11 | 2 | CANOPY TREE = 1.50 PTS |
| 1 POINTS/100' FOR LEVEL 1 PLANTING | | | S12 | 2 | CANOPY TREE = 1.50 PTS |
| 1.72 PTS/100' SHOWN ON PLAN | | | S13 | 2 | CANOPY TREE = 1.50 PTS |

| EAST PERIMETER PROPERTY LINE LANDSCAPE PLANTINGS LEVEL 1 LANDSCAPE PLANTING | | | WEST PERIMETER PROPERTY LINE LANDSCAPE PLANTINGS LEVEL 1 LANDSCAPE PLANTING | | |
|---|---|----------------------------|---|---|----------------------------|
| CANOPY TREE = 0.75 PTS | | | EXIST. CANOPY TREE = 0.75 PTS | | |
| EVERGREEN TREE = 0.50 PTS | | | | | |
| E1 | 3 | ORNAMENTAL TREE = 1.50 PTS | W3 | 1 | ORNAMENTAL TREES = 2.0 PTS |
| E2 | 2 | ORNAMENTAL TREE = 1.0 PTS | W4 | 0 | CANOPY TREES = 0.0 PTS |
| E3 | 1 | CANOPY TREE = 1.50 PTS | W5 | 1 | ORNAMENTAL TREES = 2.0 PTS |
| E4 | 2 | EVERGREEN TREE = 1.0 PTS | W6 | 3 | EVERGREEN TREE = 1.50 PTS |
| Plus any additional Existing Trees along Property Line | | | TOTAL = 8.0 PTS / 100' | | |
| TOTAL POINTS SHOWN ON PLAN = 8.50 PTS | | | Plus any additional Existing Trees along Property Line | | |
| TOTAL POINTS REQUIRED = 4.0 PTS/LEVEL 1 | | | TOTAL POINTS SHOWN ON PLAN = 8.0 PTS. | | |
| 1 POINTS/100' FOR LEVEL 1 PLANTING | | | TOTAL POINTS REQUIRED = 6.0 PTS. | | |
| 2.13 PTS/100' SHOWN ON PLAN | | | 1.33 PTS/100' SHOWN ON PLAN | | |

TYPE 1 APARTMENT BUILDING
TOTAL POINTS SHOWN ON PLAN = 16.68 PTS
TOTAL POINTS REQUIRED = 14.12 PTS

TYPE 2 APARTMENT BUILDING
TOTAL POINTS SHOWN ON PLAN = 17.35 PTS
TOTAL POINTS REQUIRED = 14.20 PTS

LANDSCAPING PARKING LOT LANDSCAPING
WITHIN A RESIDENTIAL AREA TO RECEIVE A MINIMUM OF 1 CANOPY/OVERSTORY TREE OR DECIDUOUS ORNAMENTAL UNDERSTORY TREE PER PARKING ISLAND. PARKING ISLAND TO MEASURE 8' X 18' IN SIZE.

Indianapolis 811
Know what's below. Call before you dig.

| PLANT SCHEDULE | | | | | |
|----------------|-----|--|--------------|----------|---|
| KEY | QTY | PLANT NAME BOTANICAL NAME COMMON NAME | SIZE | SPACING | REMARKS |
| AC | | Amelanchier canadensis Santecberry | 8' Height | SEE PLAN | FULL, DENSE BRANCHING, WIDTH NOT LESS THAN 60' OF HEIGHT - MULTI-STEM |
| APo | | Andromeda polifolia Bog Andromeda | 8' Height | SEE PLAN | FULL IN POT |
| AP | | Acer palmatum 'Bloodgood' Bloodgood Maple | 2.5' Height | SEE PLAN | FULL, DENSE BRANCHING, WIDTH NOT LESS THAN 60' OF HEIGHT |
| AO | | Acer rubrum 'October Glory' October Glory Red Maple | 2.5' Caliper | SEE PLAN | CENTRAL LEADER |
| AR | | Acer rubrum 'Autumn Blaze' Red Sunset Maple | 2.5' Caliper | SEE PLAN | CENTRAL LEADER |
| BV | | Buxus x koreana 'Green Velvet' Green Velvet Boxwood | 18" Height | SEE PLAN | FULL IN POT |
| CCL | | Caryopteris x clandonensis 'Blue Mist' Blue Mist Spirea | 3 Gallon | SEE PLAN | FULL IN POT |
| CS | | Cornus sericea Red Twig Dogwood | 24" Height | SEE PLAN | FULL IN POT |
| FG | | Fothergilla gardenii Dwarf Fothergilla | 18" Height | SEE PLAN | FULL IN POT |
| GD | | Gymnocladus dioica Kentucky Coffeetree | 2.5" Caliper | SEE PLAN | CENTRAL LEADER |
| GT | | Gleditsia tricanthos inermis 'Skycole' Skyline Honeylocust | 2.5" Caliper | SEE PLAN | CENTRAL LEADER |
| HA | | Hydrangea arborescens 'Annabelle' Annabelle Hydrangea | 3 Gallon | SEE PLAN | FULL IN POT |
| IV | | Ilex verticillata 'Winter Red' Winter Red Female Winterberry | 24" Height | SEE PLAN | FULL IN POT |
| JC | | Juniper chinensis 'Hetzi' Hetzi Columnar Juniper | 6" Height | SEE PLAN | FULL IN POT |
| LM | | Liriodendron tulipifera Big Blue Lilyturf | 1 Gallon | SEE PLAN | FULL IN POT |
| MD | | Microbiota decussata Siberian Cypress | 2 Gallon | SEE PLAN | FULL IN POT |
| MS | | Miscanthus sinensis 'Gracillimus' Maiden Grass | 5 Gallon | SEE PLAN | FULL IN POT |
| MST | | Magnolia stellata Star Magnolia | 2.5" Caliper | SEE PLAN | FULL, DENSE BRANCHING, WIDTH NOT LESS THAN 60' OF HEIGHT |
| PA | | Picea abies Norway Spruce | 6' Height | SEE PLAN | CENTRAL LEADER |
| PO | | Picea omorika Serbian Spruce | 6' Height | SEE PLAN | CENTRAL LEADER |
| QA | | Quercus alba White Oak | 2.5" Caliper | SEE PLAN | CENTRAL LEADER |
| QB | | Quercus bicolor Swamp White Oak | 2.5" Caliper | SEE PLAN | CENTRAL LEADER |
| QM | | Quercus muhlenbergii Chinquapin Oak | 2.5" Caliper | SEE PLAN | CENTRAL LEADER |
| QR | | Quercus rubra Northern Red Oak | 2.5" Caliper | SEE PLAN | CENTRAL LEADER |
| TD | | Taxodium distichum Common Baldcypress | 2.5" Caliper | SEE PLAN | CENTRAL LEADER |
| TM | | Taxus x media 'Hicksi' Hicksi Yew | 24" Height | SEE PLAN | FULL IN POT |
| TT | | Taxus x media 'Tauntoni' Taunton Yew | 24" Height | SEE PLAN | FULL IN POT |
| TO | | Thuja occidentalis 'Green Giant' Green Giant Arborvitae | 8' Height | SEE PLAN | FULL IN POT |
| VB | | Viburnum x burkwoodii Burkwood Viburnum | 36" Height | SEE PLAN | FULL IN POT |
| VC | | Viburnum carlesii Koreanspice Viburnum | 24" Height | SEE PLAN | FULL IN POT |
| VJ | | Viburnum x juddii Judd Viburnum | 30" Height | SEE PLAN | FULL IN POT |
| VM | | Vinca minor Myrtle | 50" Flat | SEE PLAN | FULL IN POT |
| VP | | Viburnum prunifolium Black Haw Viburnum | 48" Height | SEE PLAN | B&B - MULTI-STEM |
| SC | | GREEN ROOF - 1'x 2' Sedum Tile Mix Sedum acre 'Aurea', Sedum album 'Coral Carpet', Sedum caucolicum Pink, Sedum elaeagnifolium 'Weihestephaner Gold', Sedum hybridum 'Czars Gold', Sedum kamtschaticum, Sedum rupestre, Sedum sexangulare, Sedum spurium sp., Sedum spatum 'Voodoo' | | SEE PLAN | 1' x 2' CARPET TILE |

shows P:\2021\21233-B\Engineering\Cadd\Sheet Files\Development_Plan\21233-B\Indisp.dwg September 30, 2025 11:04 AM

LANDSCAPE PLAN
THE VILLAGE AT PLANK ROAD
WASHINGTON TOWNSHIP
PLAINFIELD, INDIANA

BANNING ENGINEERING
653 COLUMBIA ROAD, SUITE #101
PLAINFIELD, IN 46166
BUS: (317) 707-3700 FAX: (317) 707-3800
E-MAIL: Banning@BanningEngineering.com
WEB: www.BanningEngineering.com

Project No: 21233-B
Sheet No: L104