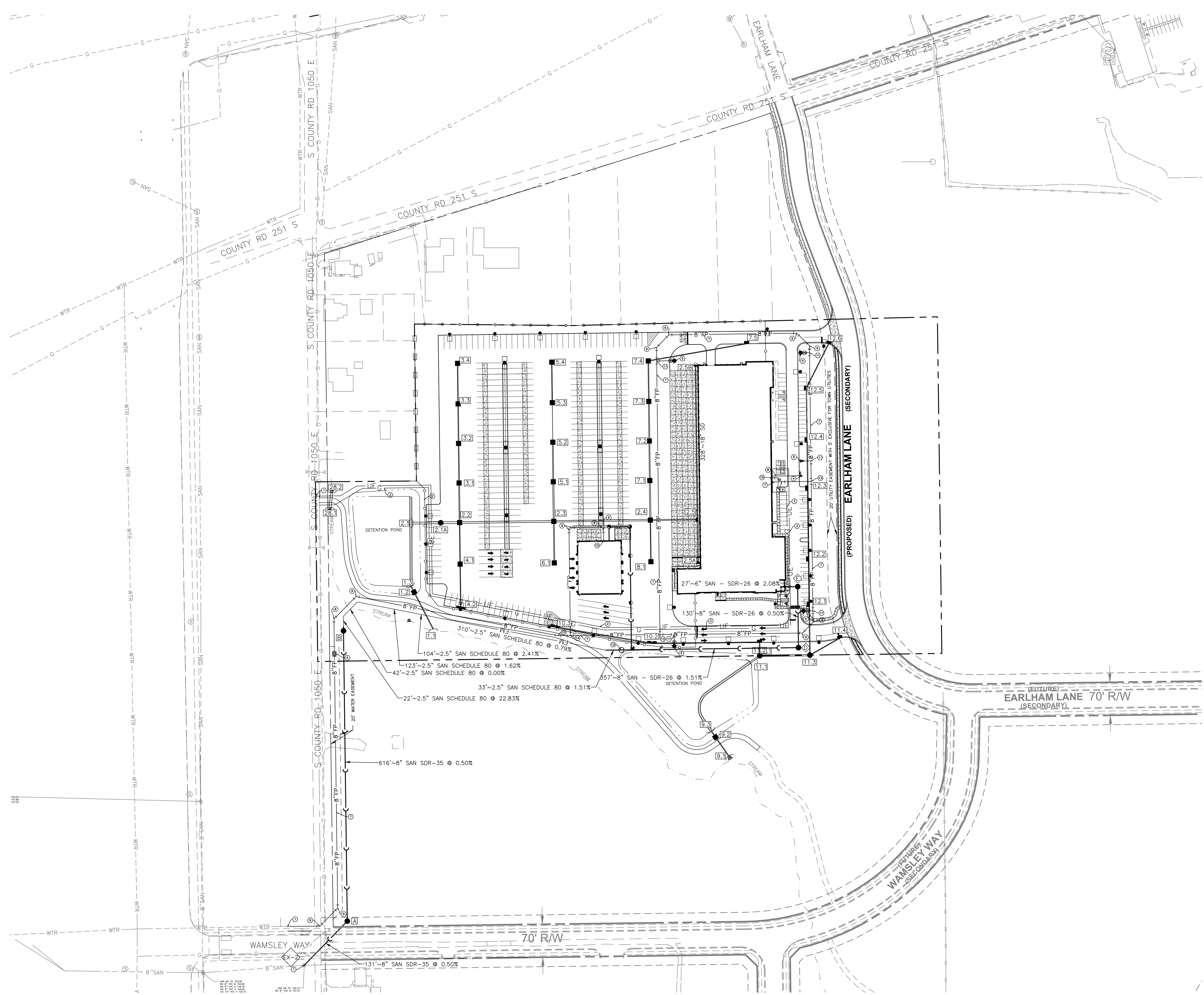


Layout Tab Name: OVERALL UTILITY PLAN
 Last Saved By: Branch, 10/7/2024 8:03:27 PM
 W:\Sriniv\DE\Invy\Clients\Indiana Life Science Center\082429 Indiana Life Science Center\4.0 Disciplines\Civil\Cadd\Cad\82429-DVALUTL.dwg Plotted By: Burchett, Trent Plotted: October 18, 2024, 1:37:28 PM



LEGEND

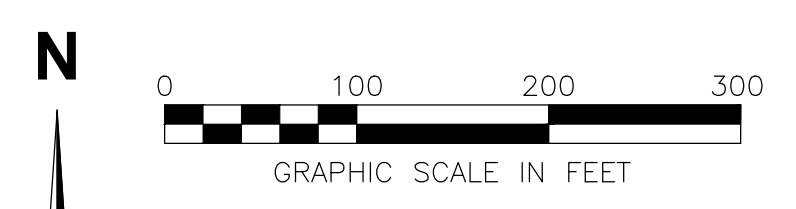
- | | |
|---------|-------------------------------|
| — UE — | UNDERGROUND ELECTRIC |
| — WTR — | WATER |
| — SAN — | SANITARY SEWER |
| — SD — | STORM SEWER |
| — SAN — | EXISTING SANITARY SEWER |
| — SD — | EXISTING STORM SEWER |
| — WTR — | EXISTING WATER |
| — FP — | EXISTING FIRE PROTECTION |
| — UE — | EXISTING UNDERGROUND ELECTRIC |
| — UT — | EXISTING UNDERGROUND TELECOM |
| — G — | EXISTING GAS |
| ■ | CATCH BASIN |
| ● | STORM MANHOLE |
| ○ | STORM DOWNSPOUT |
| () | STORM HEADWALL |
| [X] | STORM STRUCTURE ID |
| ● | FIRE HYDRANT |
| ● | SANITARY MANHOLE |
| ◇ | SANITARY CLEANOUT |
| ◇ | SANITARY STRUCTURE ID |
| ○ | EXISTING SANITARY STRUCTURE |
| □ | EXISTING STORM STRUCTURE |

KEYNOTES (X)

- CONNECT TO EXISTING UTILITY PER AGENCY REQUIREMENTS
- UNDERGROUND ELECTRIC
- GAS SERVICE
- FREE STANDING SPRINKLER. SEE SHEET 12 OF PLAINFIELD TOWN STANDARDS FOR DETAILS
- FIRE HYDRANT. SEE SHEET 12 OF PLAINFIELD TOWN STANDARDS FOR DETAILS
- PRIVATE DISTRIBUTION WATER METER PIT. SEE SHEET 13 OF PLAINFIELD TOWN STANDARDS FOR DETAILS
- 8" DUCTILE IRON FIRE PROTECTION LINE LOOP. SEE SHEETS 11 & 12 OF PLAINFIELD TOWN STANDARDS FOR DETAILS
- 6" DUCTILE IRON FIRE PROTECTION LINE. SEE SHEETS 11 & 12 OF PLAINFIELD TOWN STANDARDS FOR DETAILS
- 45" WATER BEND. SEE SHEET 12 OF PLAINFIELD TOWN STANDARDS FOR DETAILS
- 11.25" WATER BEND. SEE SHEET 12 OF PLAINFIELD TOWN STANDARDS FOR DETAILS
- 8"x8"x6" WATER TEE. SEE SHEET 12 OF PLAINFIELD TOWN STANDARDS FOR DETAILS
- SANITARY SEWER E-ONE WH484 GRINDER PUMP STATION
- 8"x8"x8" WATER TEE. SEE SHEET 12 OF PLAINFIELD TOWN STANDARDS FOR DETAILS
- 8"x8"x2" WATER TEE. SEE SHEET 12 OF PLAINFIELD TOWN STANDARDS FOR DETAILS
- 2" TYPE K COPPER DOMESTIC WATER SERVICE

NOTES

- SEE SHEET C-002 FOR GENERAL NOTES.
- CONTRACTOR SHALL REFER TO OTHER PLANS WITHIN THIS CONSTRUCTION SET FOR OTHER PERTINENT INFORMATION. IT IS NOT THE ENGINEER'S INTENT THAT ANY SINGLE PLAN SHEET WITHIN THIS SET OF DOCUMENTS FULLY DEPICT ALL WORK ASSOCIATED WITH THE PROJECT.
- REFER TO ARCHITECTURAL PLANS FOR EXACT BUILDING UTILITY ENTRANCE LOCATIONS AND MEP PLANS FOR CONTINUATION INTO BUILDING.
- ALL PROPOSED PIPE SLOPES SHOWN ARE MINIMUM REQUIRED. CONTRACTOR SHALL CONFIRM ACTUAL SLOPES REQUIRED BASED ON EXISTING INVERT ELEVATIONS.
- ALL STORM PIPE MATERIAL SHALL BE EITHER RCP OR HP STORM.
- ALL WATER SERVICE PIPE MATERIAL SHALL BE EITHER PVC OR DUCTILE IRON PER WATER DEPARTMENT REQUIREMENTS.
- ALL SANITARY PIPE MATERIAL SHALL BE SDR 35 PER SANITARY SEWER DEPARTMENT REQUIREMENTS.
- CONTRACTOR TO PRACTICE CAUTION WHEN WORKING IN AREA OF EXISTING UTILITIES.



ISSUANCE SCHEDULE	DESCRIPTION
NUMBER	DATE

**PACE AIR FREIGHT HQ
 INDIANA LIFE SCIENCES PARK**

PLAINFIELD, INDIANA

PROJECT NO: 82429.12
 DATE ISSUED: 10/18/2024
 DESIGNED BY: TAB
 DRAWN BY: SMB
 CHECKED BY: GM

SHEET NAME:
OVERALL UTILITY PLAN

SHEET NO:
C-400