

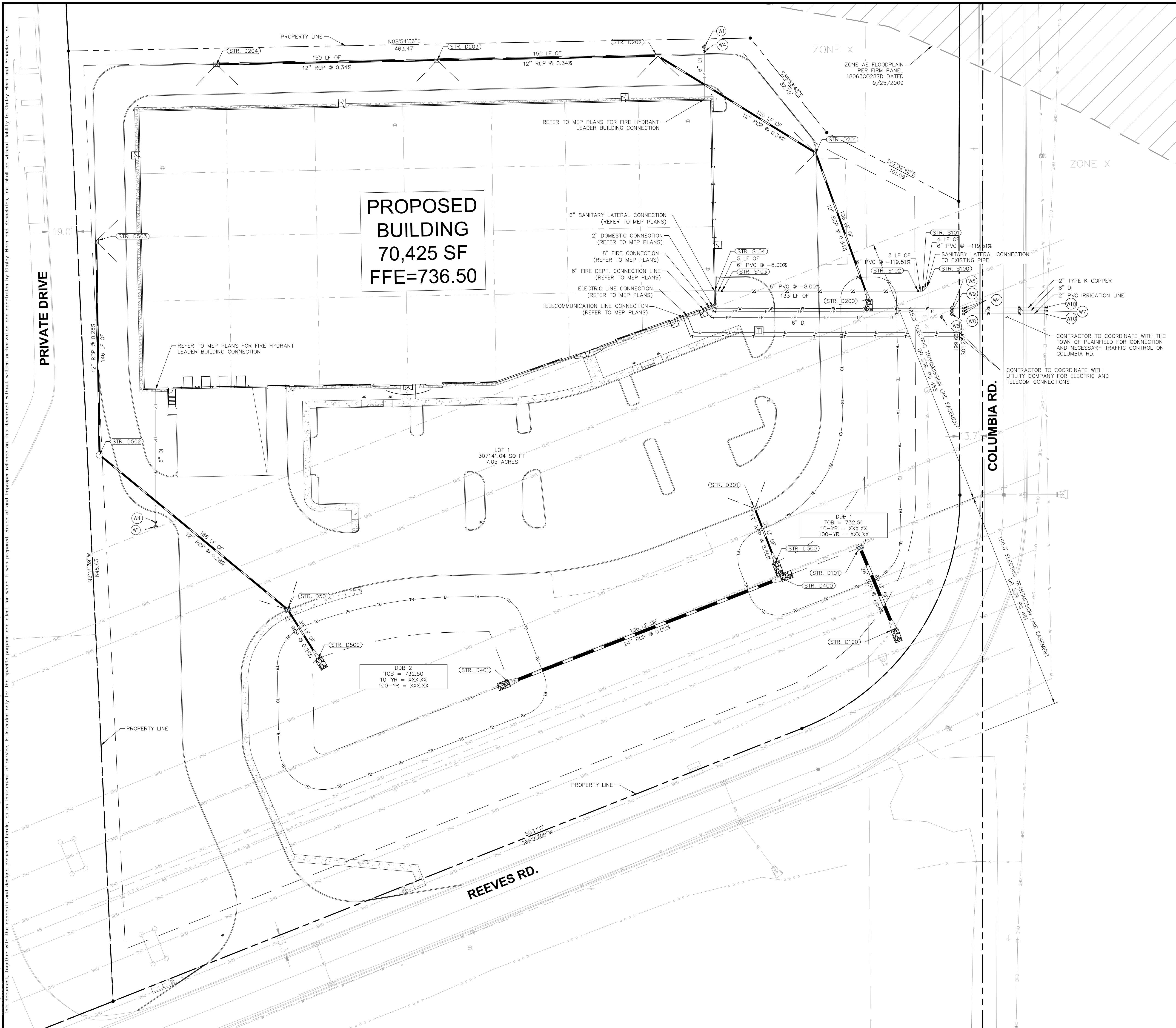
Drawing name: K:\INDO\DEV\170024035\_Peterson\_Airwest-Lot-C\_Planfiled\_IN2\_Design\CADD\PlanSheets\C6.0-UTILITY\_PLAN.dwg C6.0 Jan 26, 2023 16:04pm by: celestine  
 This document, together with the concepts and designs presented herein, is intended only for the specific purpose and client for which it was prepared. Reuse of and improper reliance on this document without written authorization and adaptation by Kimley-Horn and Associates, Inc. shall be without liability to Kimley-Horn and Associates, Inc.

Indiana Utilities Protection Service

# Call 811

before you dig

GRAPHIC SCALE IN FEET  
0 15' 30' 60'



**PROPOSED BUILDING**  
70,425 SF  
FFE=736.50

LOT 1  
307141.04 SQ FT  
7.05 ACRES

DDB 2  
TOB = 732.50  
10-YR = XXX.XX  
100-YR = XXX.XX

DDB 1  
TOB = 732.50  
10-YR = XXX.XX  
100-YR = XXX.XX

### UTILITY LEGEND

- PROPOSED UNDERGROUND ELECTRIC LINE
- PROPOSED GAS LINE (BY GAS COMPANY)
- PROPOSED PHONE LINE
- PROPOSED ROOF DRAIN LINE
- PROPOSED UNDERDRAIN
- PROPOSED SWALE
- PROPOSED STORM SEWER LINE
- STRUCTURE ID
- PROPOSED STORM STRUCTURES
- PROPOSED SANITARY SEWER LINE
- PROPOSED SANITARY LATERAL LINE
- PROPOSED SANITARY MANHOLE
- PROPOSED STORM/SANITARY CLEANOUT
- PROPOSED WATER LINE
- PROPOSED FIRE PROTECTION LINE
- PROPOSED WATER VALVE BOX, PIV, METER, FIRE HYDRANT, FIRE DEPT CONN. & VAULT
- PROPOSED WATER BENDS & TEE
- PROPOSED LIGHT POLE
- PROPOSED TRANSFORMER PAD (BY OTHERS)

### KEY NOTES

- (D) DRAINAGE STORM SEWER
    - D1. ROOF DRAIN CLEANOUT
    - D2. ROOF DRAIN LINE
    - D3. CONNECT ROOF DRAIN TO STRUCTURE
    - D4. PERFORATED UNDERDRAIN
  - (S) SANITARY SEWER
    - S1. SANITARY CLEANOUT
    - S2. SANITARY LATERAL LINE
    - S3. SANITARY LINE
  - (W) WATER LINE
    - W1. FIRE HYDRANT AND VALVE ASSEMBLY (TOWN STD SHEET 12)
    - W2. WATER TEE
    - W3. WATER BEND
    - W4. GATE VALVE (TOWN STD SHEET 12)
    - W5. 2" DOMESTIC WATER METER (TOWN STD DS-W03, SHEET 13)
    - W6. FIRE DEPT CONNECTION (TOWN STD DS-W04, SHEET 13)
    - W7. CONNECT TO EXISTING WATER (TOWN STD DS-W01, SHEET 13)
    - W8. IRRIGATION METER (TOWN STD DS-W03, SHEET 13)
    - W9. FIRE PROTECTION METER VAULT (TOWN STD DS-W06, SHEET 13)
    - W10. CONNECTION TO EXISTING WATER (TOWN STD DS-W03, SHEET 13)
  - (G) GAS LINE
    - G1. GAS SERVICE LINE
  - (E) ELECTRIC / TELEPHONE / CABLE
    - E1. ELECTRIC SERVICE LINE
    - E2. ELECTRIC TRANSFORMER
    - E3. TELECOMMUNICATIONS LINE
  - (M) MISCELLANEOUS
    - M1. CONTRACTOR TO COORDINATE CONNECTION WITH UTILITY PROVIDER.
    - M2. CONTRACTOR TO FIELD VERIFY LOCATION, DEPTH AND SIZE OF EXISTING UTILITY TO ENSURE CONFLICTS DO NOT EXIST WITH PROPOSED UTILITIES.
    - M3. POTENTIAL UTILITY CONFLICT. ALL (WATER, SANITARY, DRAINAGE STORM) CROSSINGS TO HAVE 18" MIN. VERTICAL CLEARANCE. ALL WATER SERVICE LINES TO REMAIN PERPENDICULAR AT CROSSING IN SUCH THAT IT FORMS AN ANGLE BETWEEN 45° AND 90°.
- NOTE: CONTRACTOR TO VERIFY WATER, SANITARY, GAS, & ETC LOCATIONS, SIZES AND TYPES WITH MEP PLANS PRIOR TO ORDERING MATERIALS.

DESIGNED BY: CDC

DRAWN BY: NPK

CHECKED BY: BAS

UTILITY PLAN

AIRWEST LOT - G

3100 REEVES RD., PLAINFIELD, IN 46168

ORIGINAL ISSUE:  
2023-01-26

KHA PROJECT NO.  
170024035

SHEET NUMBER

C6.0