

Drawing name: G:\Marketing_Prospectus\LEVA\2021\T&H Investments\... 2021-09-02, Vandolia Trillo\Plainfield_IL\2. Design\CADD\PlanSheets\PRELIMINARY GRADING & EROSION CONTROL PLAN.dwg C2.0 Aug 18, 2022 12:08pm by Brian Kizer
 This document, together with the concepts and designs presented herein, is intended only for the specific purpose and client for which it was prepared. Reuse of and improper reliance on this document without written authorization and adaptation by Kimley-Horn and Associates, Inc. shall be without liability to Kimley-Horn and Associates, Inc.

Indiana Utilities Protection Service
Call 811
 before you dig



GRADING NOTES

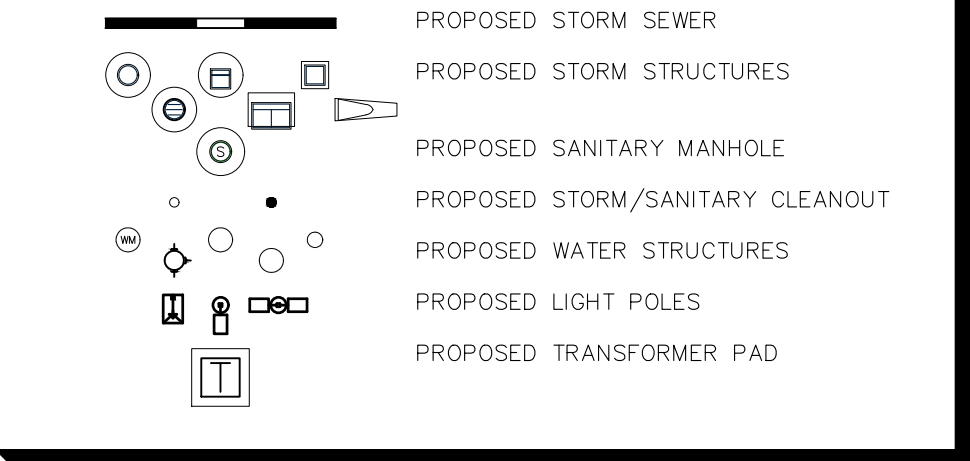
- CONTRACTOR TO VERIFY ALL EXISTING TOPOGRAPHY AND STRUCTURES ON THE SITE AND IMMEDIATELY NOTIFY THE ENGINEER OF ANY DISCREPANCIES PRIOR TO STARTING WORK.
- ALL PAVEMENT SPOT GRADE ELEVATIONS AND RIM ELEVATIONS WITHIN OR ALONG CURB AND GUTTER REFER TO EDGE OF PAVEMENT ELEVATIONS UNLESS OTHERWISE NOTED.
- ALL ELEVATIONS SHOWN DEPICT FINISHED GRADE OR EDGE OF PAVEMENT UNLESS OTHERWISE NOTED. GENERAL CONTRACTOR TO COORDINATE WITH EXCAVATION, LANDSCAPE AND PAVING SUBCONTRACTORS REGARDING TOPSOIL THICKNESS FOR LANDSCAPE AREAS AND PAVEMENT SECTION THICKNESS FOR PAVED AREAS TO PROPERLY ENSURE ADEQUATE CUT TO ESTABLISH SUBGRADE ELEVATIONS.
- NO EARTHEN SLOPE SHALL BE GREATER THAN 3:1, UNLESS OTHERWISE NOTED.
- MAXIMUM SLOPE IN ACCESSIBLE PARKING SPACES AND LOADING ZONES SHALL NOT EXCEED 2.0% IN ALL DIRECTIONS.
- MAXIMUM RUNNING SLOPE SHALL NOT EXCEED 5% AND CROSS SLOPE SHALL NOT EXCEED 2% ON ALL SIDEWALKS AND ACCESSIBLE ROUTES UNLESS OTHERWISE NOTED.
- WHEN NATURAL FLOW OF DRAINAGE IS AWAY FROM CURB, CONTRACTOR TO INSTALL REVERSE GUTTER PITCH.
- MATCH EXISTING ELEVATIONS AT THE PROPERTY LIMITS.
- ALL STOOPS OR PEDESTRIAN EGRESS POINTS FROM THE BUILDING(S) SHALL BE NO GREATER THAN 2% FOR THE FIRST 5'.

EROSION CONTROL NOTES

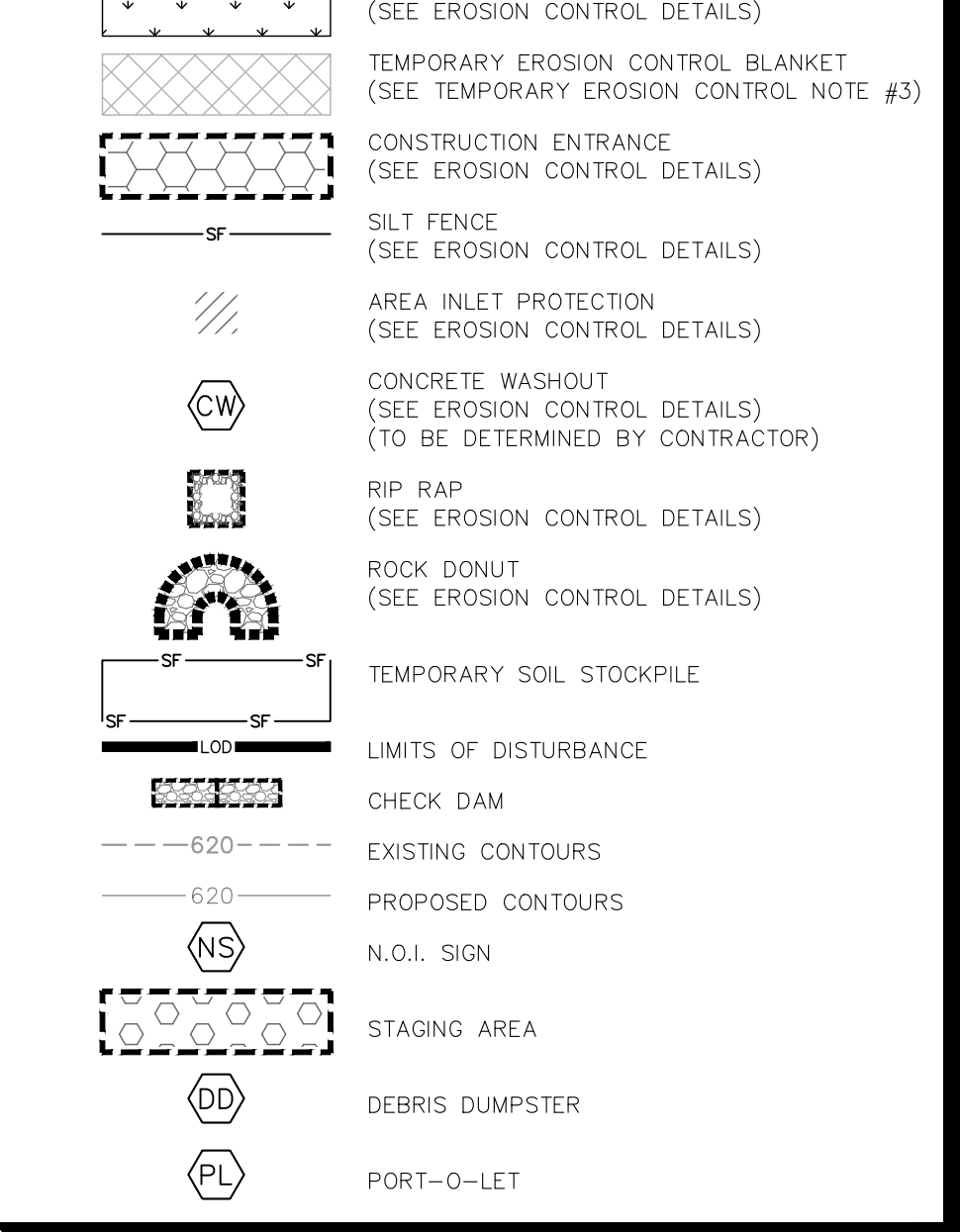
TEMPORARY EROSION CONTROL NOTES

- THE PLACEMENT OF EROSION/SEDIMENTATION CONTROLS SHALL BE IN ACCORDANCE WITH THE APPROVED EROSION AND SEDIMENTATION CONTROL PLAN.
- ANY MAJOR VARIATION IN MATERIALS OR LOCATIONS OF CONTROLS OR FENCES FROM THOSE SHOWN ON THE APPROVED PLANS WILL REQUIRE A REVISION AND MUST BE APPROVED BY THE REVIEWING ENGINEER, ENVIRONMENTAL SPECIALIST, OR ARBORIST AS APPROPRIATE. MAJOR REVISIONS MUST BE APPROVED BY THE PLANNING AND DEVELOPMENT DEPARTMENT AND THE DRAINAGE UTILITY DEPARTMENT. MINOR CHANGES OR ADDITIONAL CONTROL MEASURES TO BE MADE AS FIELD REVISIONS TO THE EROSION AND SEDIMENTATION CONTROL PLAN MAY BE REQUIRED BY THE ENVIRONMENTAL INSPECTOR DURING THE COURSE OF CONSTRUCTION TO CORRECT CONTROL INADEQUACIES AT NO ADDITIONAL COST TO THE OWNER.
- CONTRACTOR SHALL PLACE EROSION CONTROL BLANKET (NORTH AMERICAN GREEN S150 OR APPROVED EQUAL) ON ALL SITE AREAS WITH SLOPES GREATER THAN 4:1, AND IN THE BOTTOM AND SIDE SLOPES OF ALL SWALES.
- PRIOR TO FINAL ACCEPTANCE, HAUL ROADS AND WATERWAY CROSSINGS CONSTRUCTED FOR TEMPORARY CONTRACTOR ACCESS MUST BE REMOVED. ACCUMULATED SEDIMENT REMOVED FROM THE WATERWAY AND THE AREA RESTORED TO THE ORIGINAL GRADE AND REVEGETATED. ALL LAND CLEARING SHALL BE DISPOSED OF IN APPROVED SPOIL DISPOSAL SITES.
- PERMANENT, FINAL PLANT COVERING OR STRUCTURES SHALL BE INSTALLED PRIOR TO FINAL ACCEPTANCE.
- ALL CONTROL DEVICES THAT FUNCTION SIMILARLY TO SILT FENCE OR FIBER ROLLS MUST BE REPAIRED, REPLACED OR SUPPLEMENTED WITH EFFECTIVE CONTROLS WHEN THEY BECOME NONFUNCTIONAL OR THE SEDIMENT REACHES ONE-THIRD THE HEIGHT OF THE DEVICE. THESE REPAIRS MUST BE MADE WITHIN 24 HOURS OF THE RAINFALL EVENT OR AS SOON AS FIELD CONDITIONS ALLOW ACCESS.
- ALL SEDIMENT DELTAS AND DEPOSITS MUST BE REMOVED FROM SURFACE WATERS, DRAINAGE WAYS, CATCH BASINS AND OTHER DRAINAGE SYSTEMS. ALL AREAS WHERE SEDIMENT REMOVAL RESULTED IN EXPOSED SOIL MUST BE RESTABILIZED. THE REMOVAL AND STABILIZATION MUST TAKE PLACE IMMEDIATELY, BUT NO MORE THAN 7 DAYS AFTER THE RAINFALL EVENT UNLESS PRECLUDED BY LEGAL, REGULATORY OR PHYSICAL ACCESS CONSTRAINTS. ALL REASONABLE EFFORTS MUST BE USED TO OBTAIN ACCESS. ONCE ACCESS IS OBTAINED, REMOVAL AND STABILIZATION MUST TAKE PLACE IMMEDIATELY, BUT NO MORE THAN 7 DAYS LATER. CONTRACTOR IS RESPONSIBLE FOR CONTACTING ALL APPROPRIATE AUTHORITIES AND RECEIVING THE APPLICABLE PERMITS PRIOR TO CONDUCTING ANY WORK.
- ACCUMULATIONS OF TRACKED AND DEPOSITED SEDIMENT MUST BE REMOVED FROM OFF-SITE PAVED SURFACES WITHIN 24 HOURS OR SOONER IF REQUIRED. SEDIMENT TRACKING MUST BE MINIMIZED BY THE APPROPRIATE MANAGEMENT PRACTICE, LIKE A DEDICATED SITE EXIT WITH AN AGGREGATE SURFACE OR DESIGNATED OFF-SITE PARKING AREA. CONTRACTOR IS RESPONSIBLE FOR STREET SWEEPING AND/OR SCRAPING IF YOUR PRACTICES ARE NOT ADEQUATE TO PREVENT SEDIMENT FROM BEING TRACKED FROM THE SITE.
- SURFACE WATERS, DRAINAGE DITCHES AND CONVEYANCE SYSTEMS MUST BE INSPECTED FOR SEDIMENT DEPOSITS.
- PUMPING SEDIMENT LADEN WATER INTO ANY STORMWATER FACILITY THAT IS NOT DESIGNATED TO BE A SEDIMENT TRAP, DRAINAGEWAY, OR OFF-SITE AREA EITHER DIRECTLY OR INDIRECTLY WITHOUT FILTRATION IS PROHIBITED.
- SOIL STOCKPILES SHALL NOT BE LOCATED IN A DRAINAGEWAY, FLOOD PLAIN AREA OR A DESIGNATED BUFFER, UNLESS OTHERWISE APPROVED, UNDER SPECIFIC CONDITIONS TO BE ESTABLISHED BY THE DIRECTOR OR ADMINISTRATOR.
- STOCKPILES TO REMAIN IN PLACE FOR MORE THAN THREE DAYS SHALL BE PROVIDED WITH SESC MEASURES. MATERIAL IS TO BE HAULED OFF IMMEDIATELY AND LEGALLY IF NO STOCKPILE IS TO REMAIN IN PLACE.
- ALL TEMPORARY SESC MEASURES SHALL BE REMOVED WITHIN 30 DAYS AFTER FINAL STABILIZATION IS ACHIEVED. TRAPPED SEDIMENT AND OTHER DISTURBED SOILS RESULTING FROM TEMPORARY MEASURES SHALL BE PROPERLY DISPOSED OF PRIOR TO PERMANENT STABILIZATION.
- WATER REMOVED FROM TRAPS, BASINS, AND OTHER WATER HOLDING DEPRESSIONS OR EXCAVATIONS MUST FIRST PASS THROUGH A SEDIMENT CONTROL AND/OR FILTRATION DEVICE. WHEN DEWATERING DEVICES ARE USED, DISCHARGE LOCATIONS SHALL BE PROTECTED FROM EROSION.

GRADING LEGEND



EROSION CONTROL LEGEND



Kimley-Horn
 6022 KIMLEY-HORN AND ASSOCIATES, INC.
 250 EAST 96TH STREET, SUITE 550,
 INDIANAPOLIS, IN 46240
 WWW.KIMLEY-HORN.COM

AS NOTED
 DESIGNED BY: MUT
 DRAWN BY: NAB
 CHECKED BY: MUT

Michael J. West
 REGISTERED PROFESSIONAL ENGINEER
 NOT APPROVED FOR CONSTRUCTION
 6/18/2022

T&H INVESTMENTS

PRELIMINARY GRADING & EROSION CONTROL PLAN

WINDING WAY MULTIFAMILY SEC SMITH RD & PERRY RD PLAINFIELD, IN

ORIGINAL ISSUE: 07/28/2022
 KHA PROJECT NO. ###
 SHEET NUMBER **C2.0**