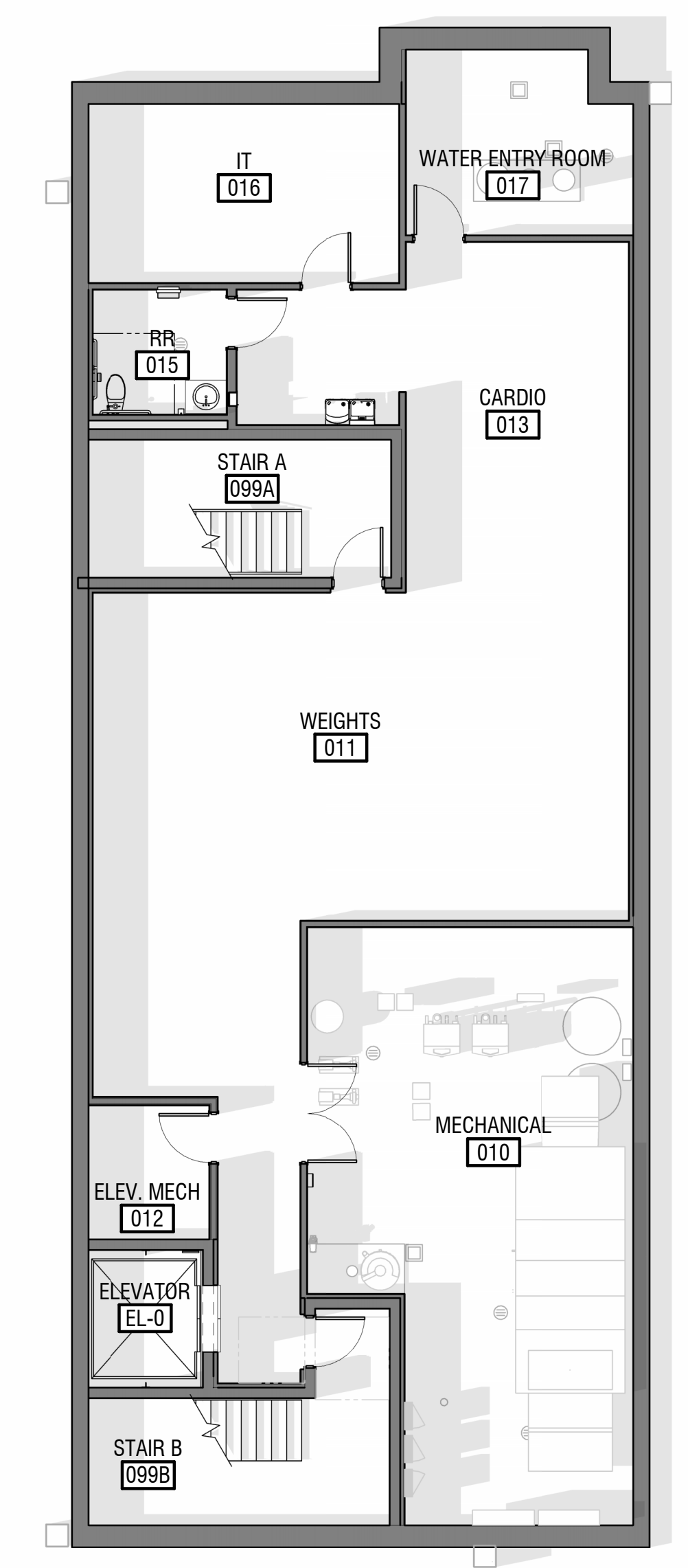




PLAINFIELD FIRE STATION 124

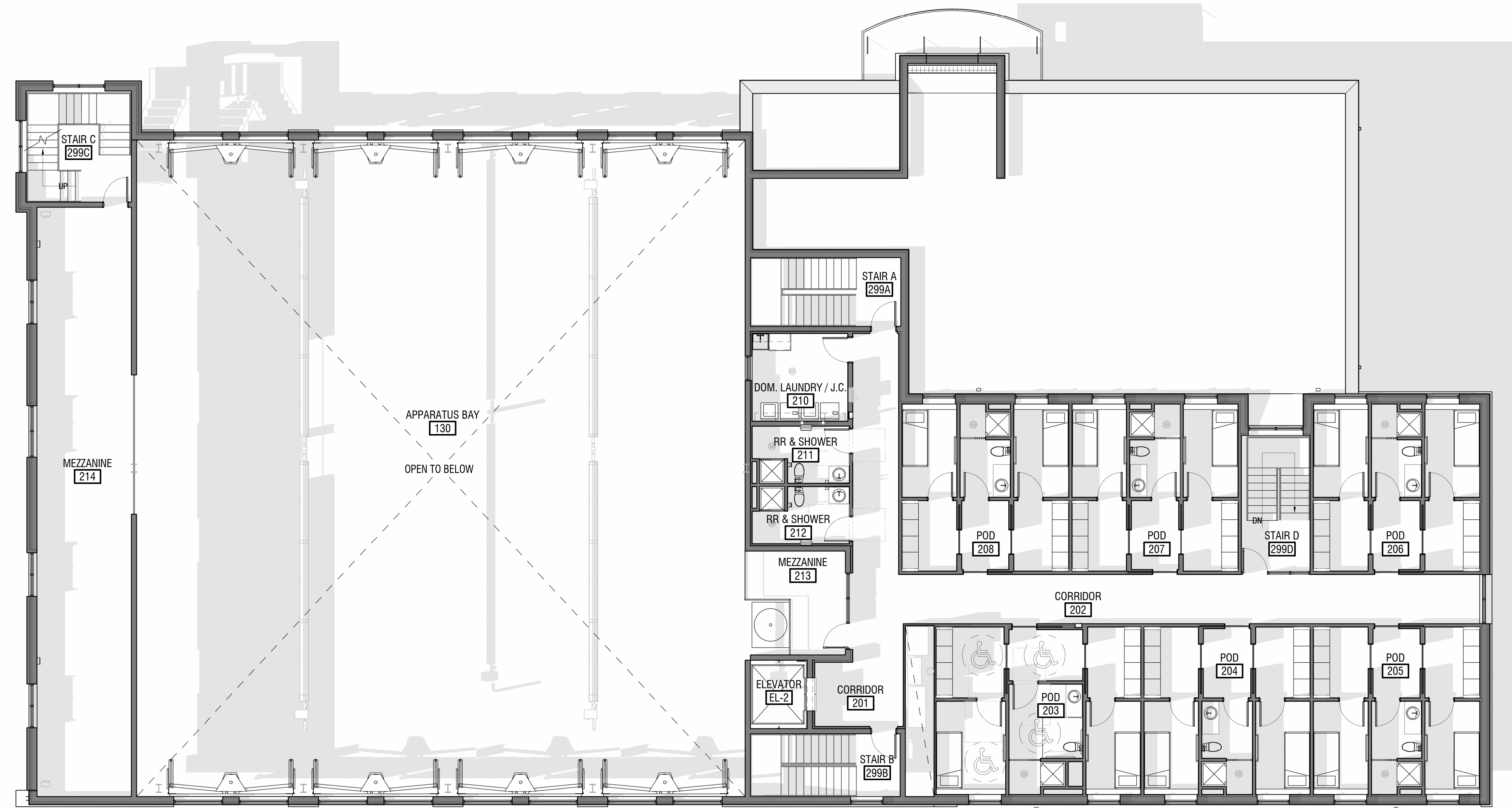




2 OVERALL CONSTRUCTION PLAN - LEVEL 1
PREST.00 1/8" = 1'-0"

1 OVERALL CONSTRUCTION PLAN - LOWER LEVEL
PREST.00 1/8" = 1'-0"





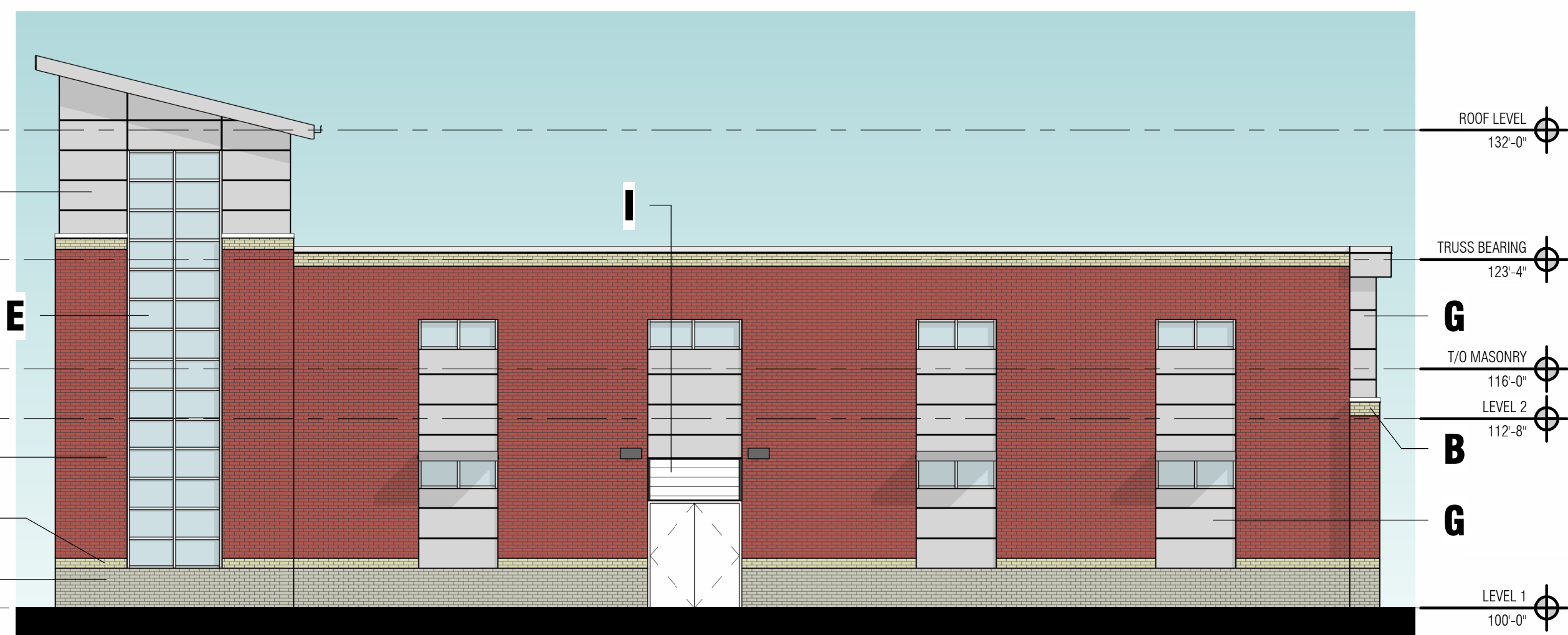
1 **OVERALL CONSTRUCTION PLAN - LEVEL 2**
PREST.01 1/8" = 1'-0"





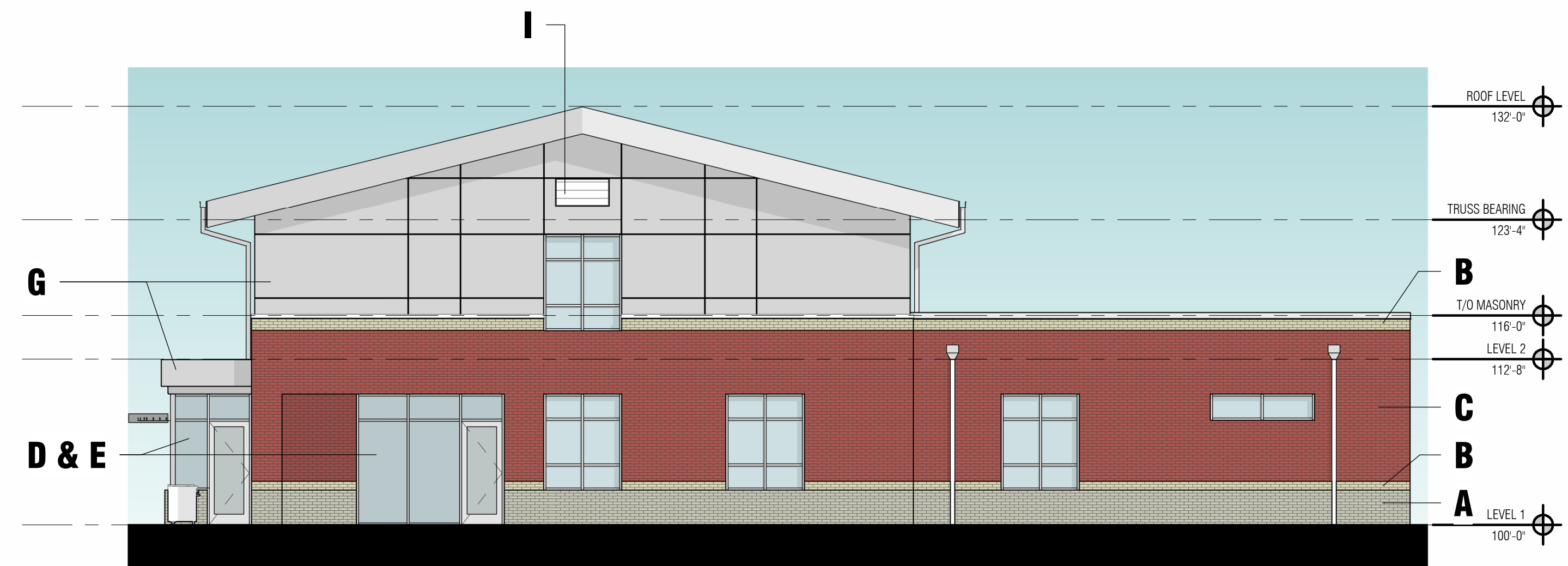
MATERIAL PERCENTAGES PER SOUTH ELEVATION
 BRICK VENEER - SEA GRAY: 8%
 BRICK VENEER - 481-483 VELOUR: 4%
 BRICK VENEER - ROYALTY RED: 18%
 COMPOSITE WALL PANELS: 44%
 GLASS: 22%

1 SOUTH EXTERIOR ELEVATION
 PRES2.00 1/8" = 1'-0"



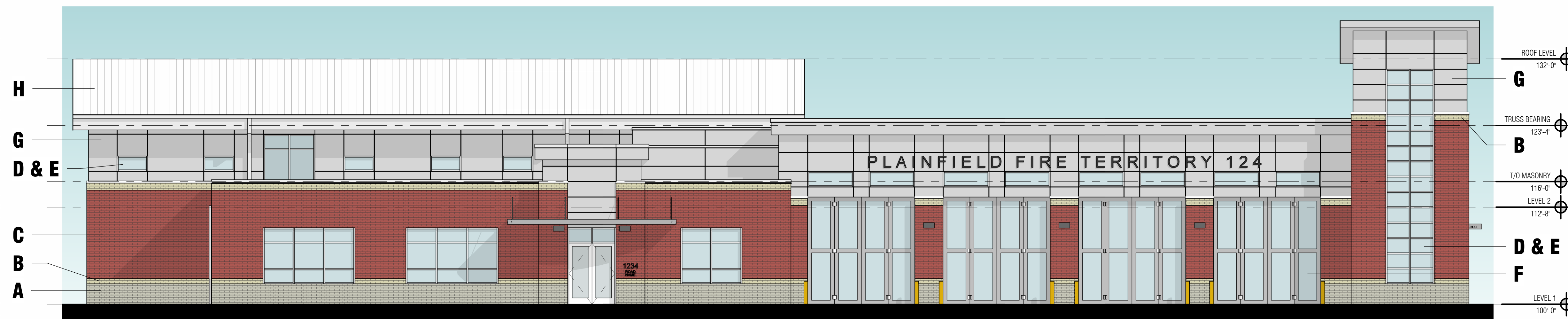
MATERIAL PERCENTAGES PER WEST ELEVATION
 BRICK VENEER - SEA GRAY: 10%
 BRICK VENEER - 481-483 VELOUR: 5%
 BRICK VENEER - ROYALTY RED: 55%
 COMPOSITE WALL PANELS: 18%
 GLASS: 9%

3 WEST EXTERIOR ELEVATION
 PRES2.00 1/8" = 1'-0"



MATERIAL PERCENTAGES PER EAST ELEVATION
 BRICK VENEER - SEA GRAY: 10%
 BRICK VENEER - 481-483 VELOUR: 6%
 BRICK VENEER - ROYALTY RED: 38%
 COMPOSITE WALL PANELS: 30%
 GLASS: 13%

2 EAST EXTERIOR ELEVATION
 PRES2.00 1/8" = 1'-0"

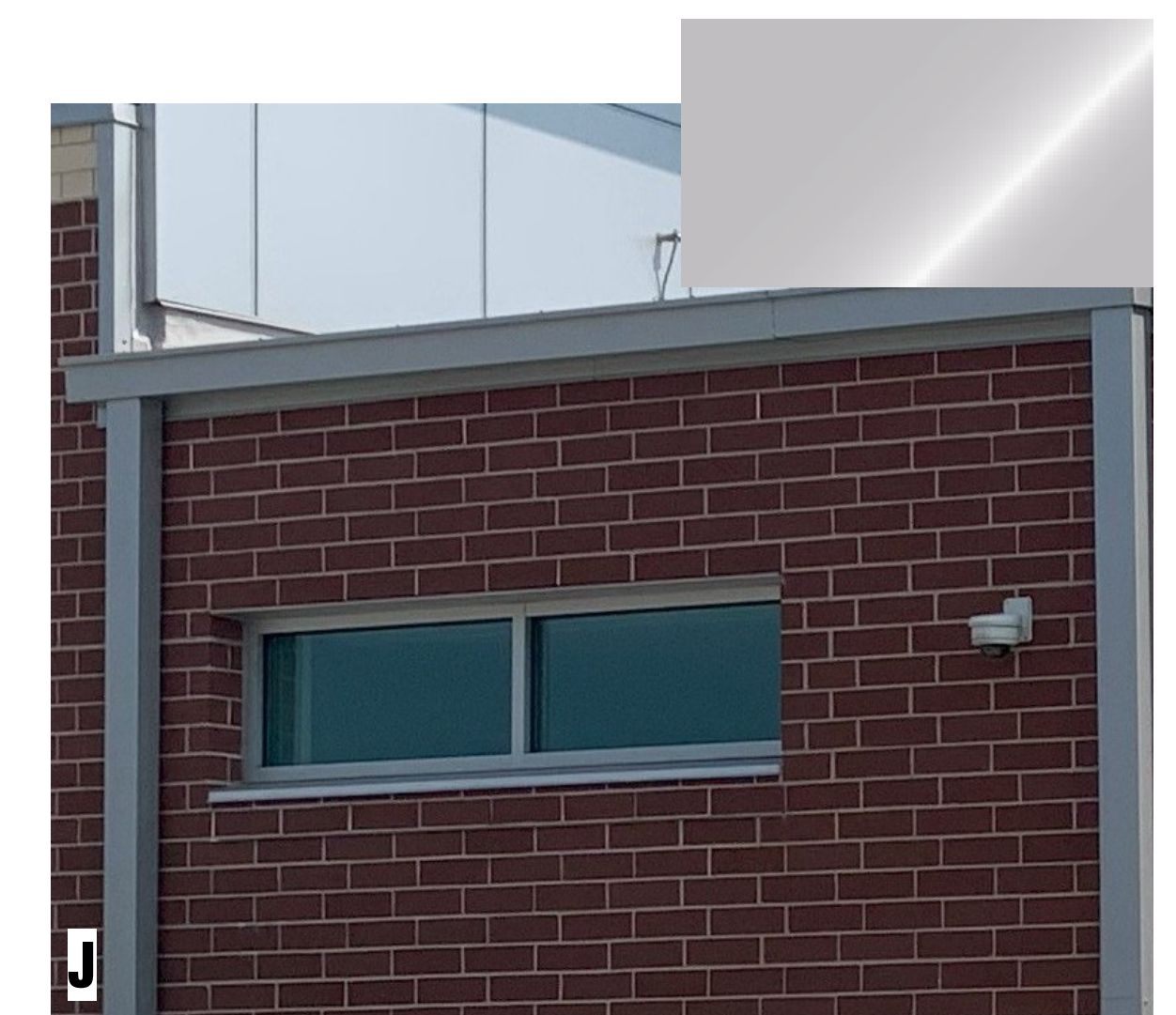
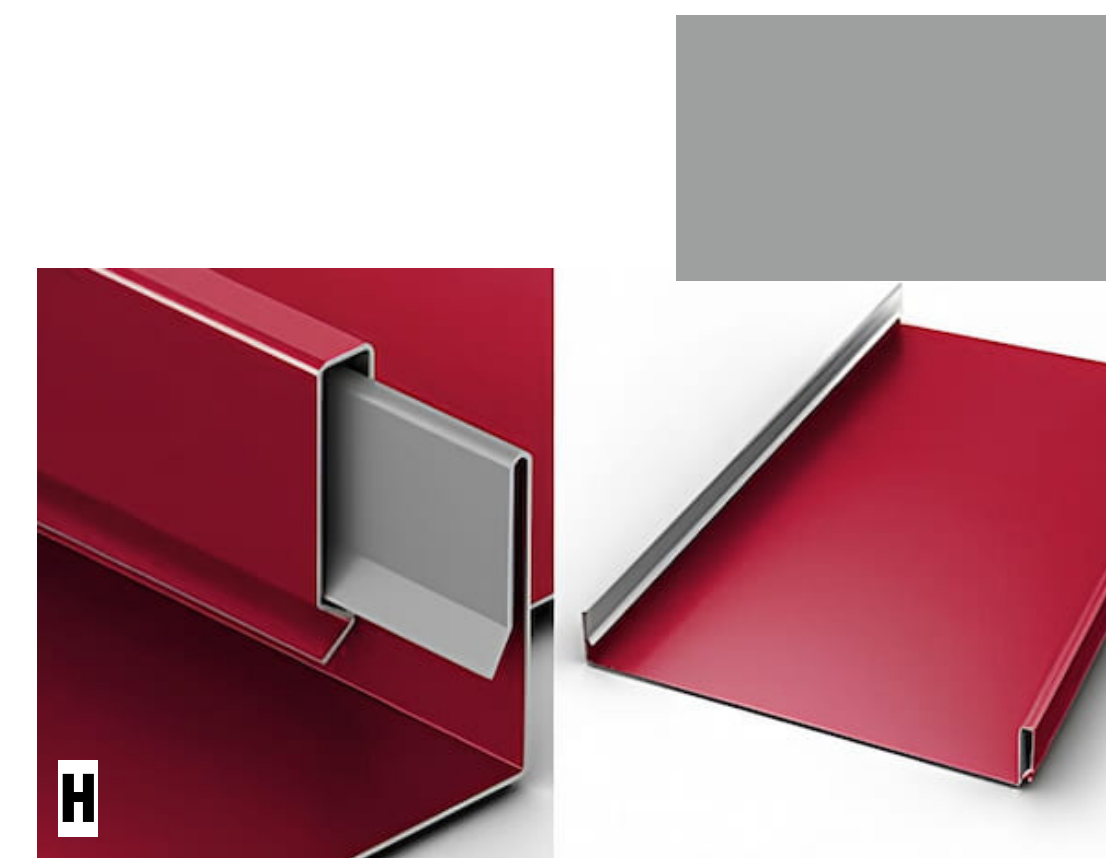
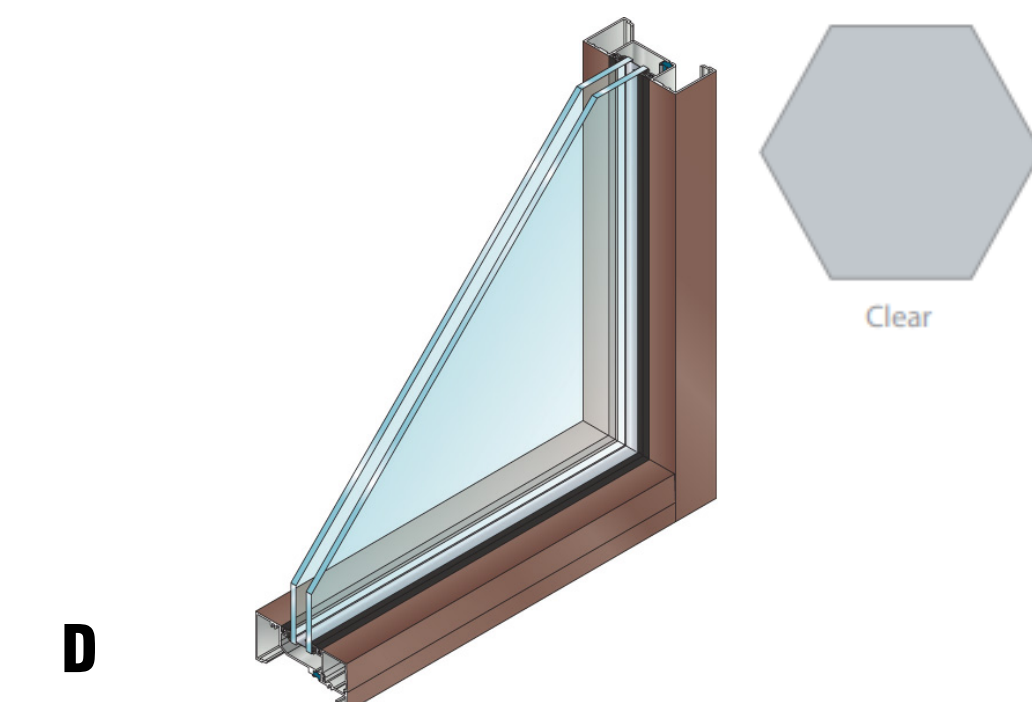
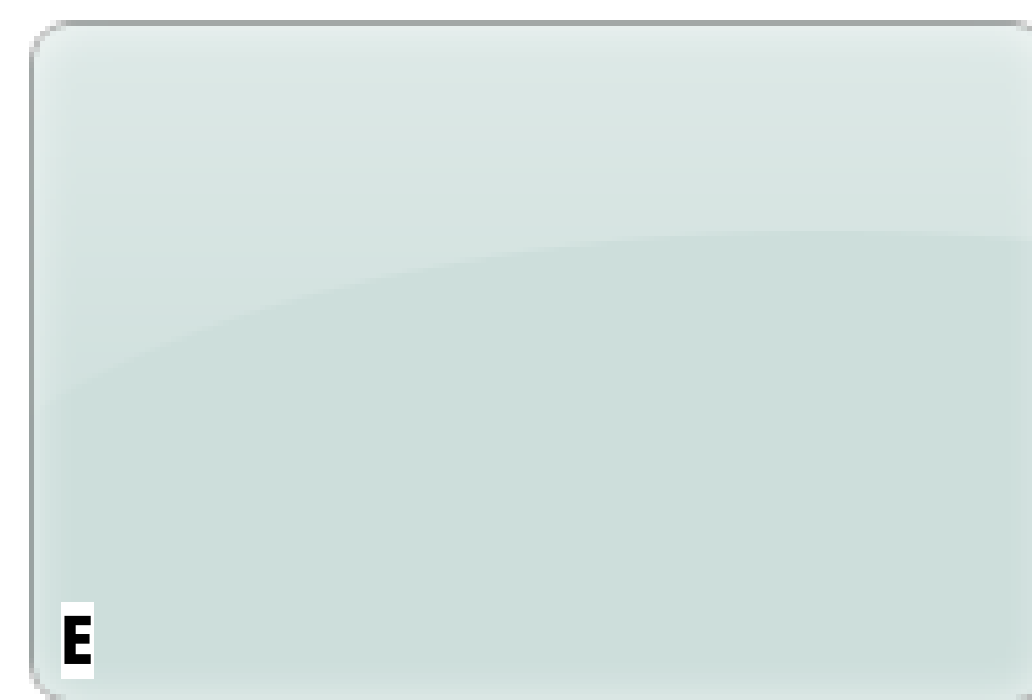
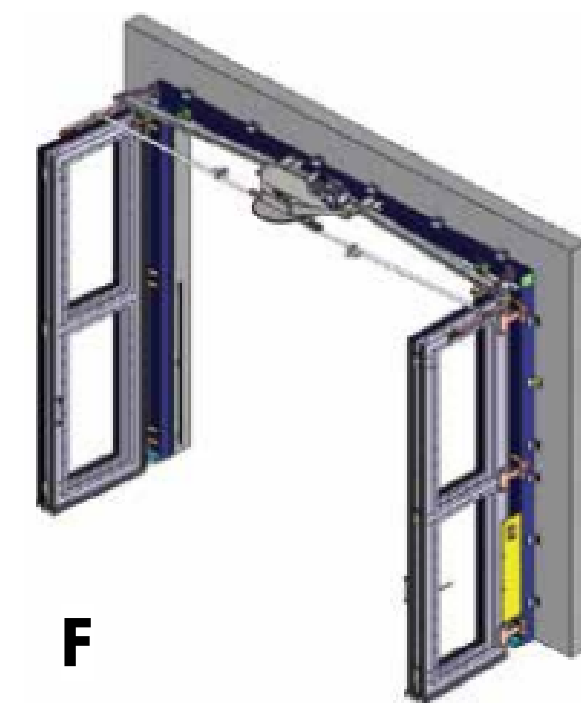
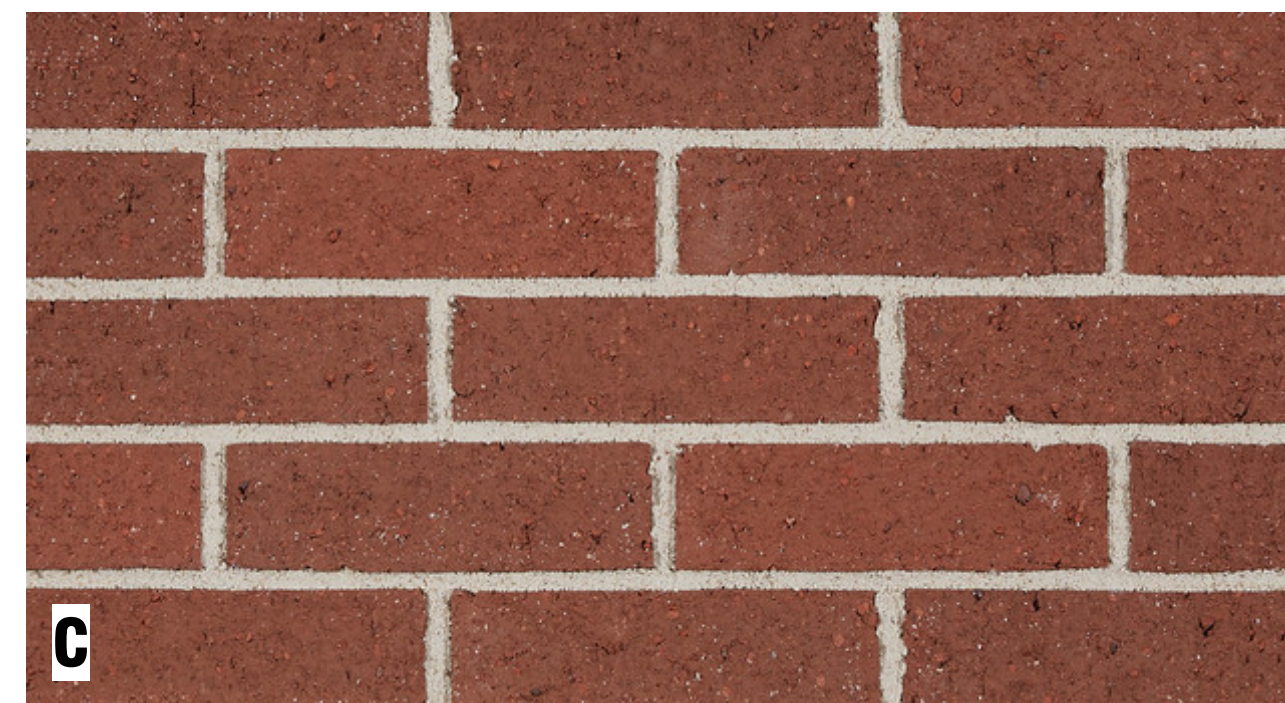


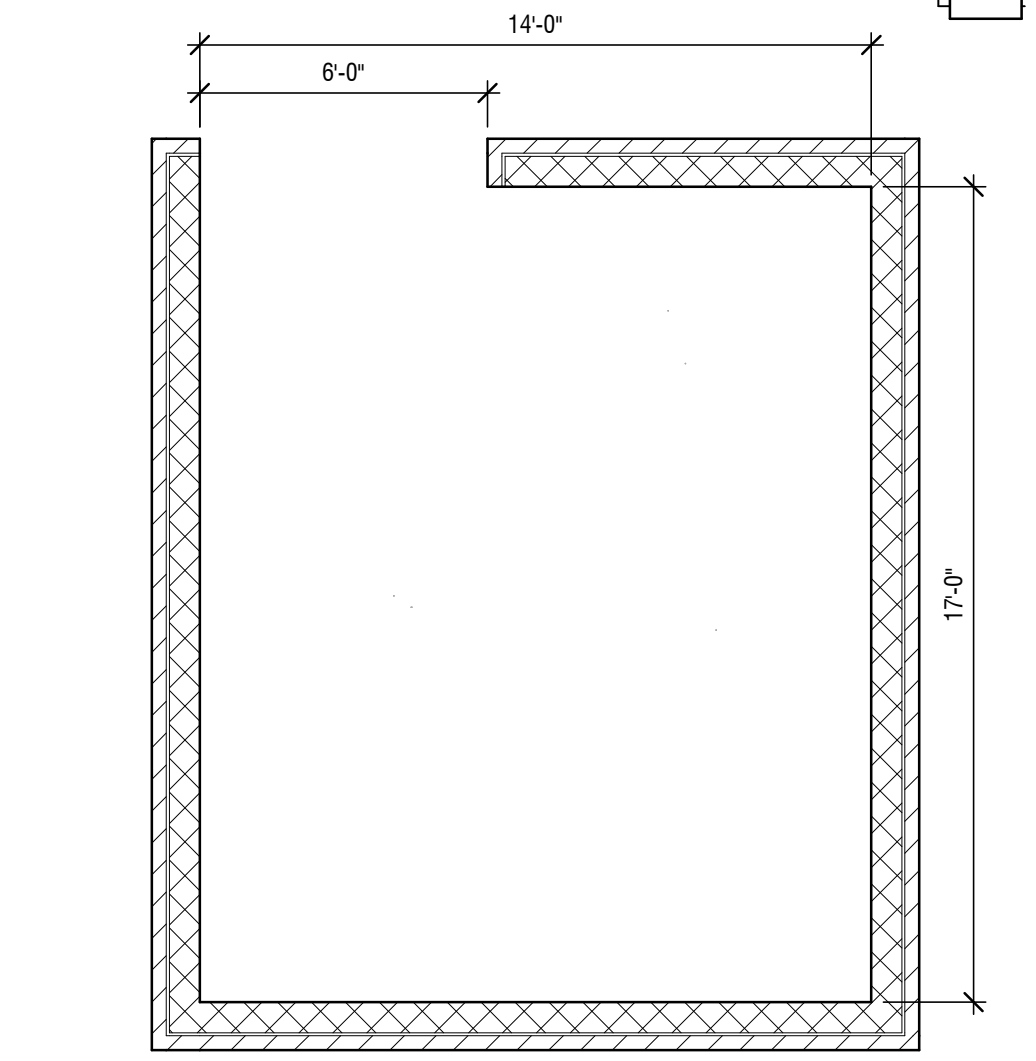
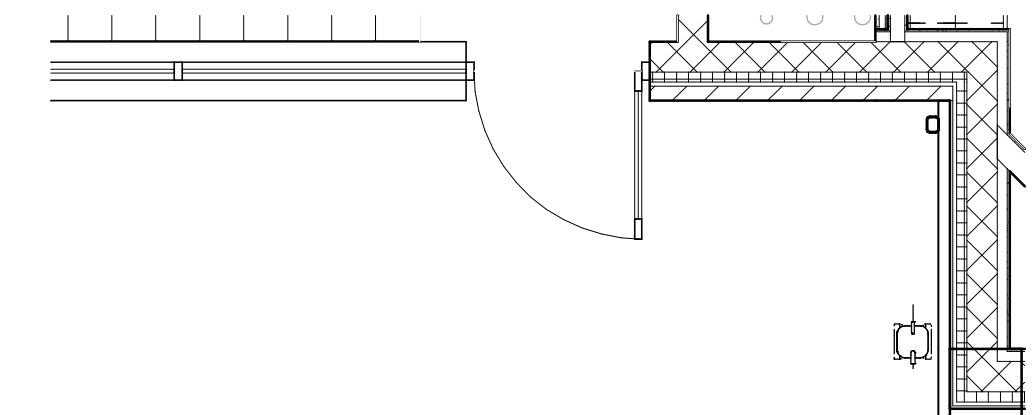
MATERIAL PERCENTAGES PER NORTH ELEVATION
 BRICK VENEER - SEA GRAY: 8%
 BRICK VENEER - 481-483 VELOUR: 5%
 BRICK VENEER - ROYALTY RED: 26%
 COMPOSITE WALL PANELS: 34%
 GLASS: 24%

4 NORTH EXTERIOR ELEVATION
 PRES2.00 1/8" = 1'-0"

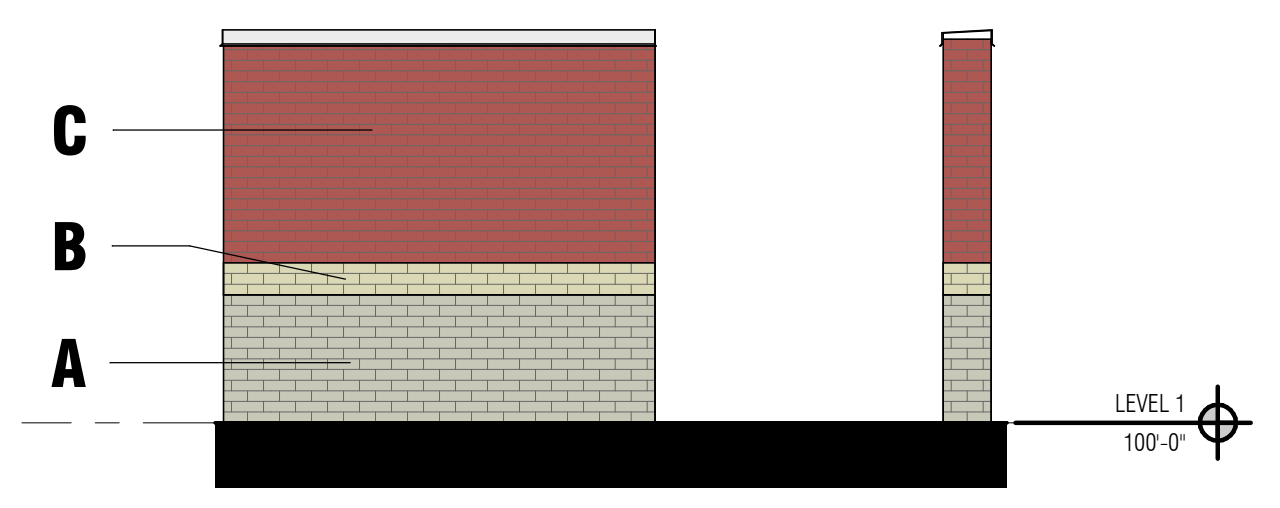
EXTERIOR MATERIALS BASIS OF DESIGN

MARK	MATERIAL	MANUFACTURER	COLOR
A	BRICK VENEER	BELDEN BRICK	SEA GRAY
B	BRICK VENEER	BELDEN BRICK	481-483 VELOUR
C	BRICK VENEER	BELDEN BRICK	ROYALTY RED
	MORTAR	CEMEXUSA	COLOR FROM FULL RANGE
D	ALUM STOREFRONT & WINDOW	EFCO CORPORATION	CLEAR ANODIZED
E	GLASS COLORS	PILKINGTON	ECLIPSE ADVANTAGE "BLUE GREEN"
F	PREFIN FOUR-FOLD DOORS	DOOR ENGINEERING & MANUF	TO MATCH STOREFRONT COLOR
G	COMPOSITE WALL PANELS	LAMINATORS, INC	BRIGHT SILVER
H	METAL ROOF PANELS	FIRESTONE BUILDING PRODUCTS	CITYSCAPE
I	LOUVERS	INDUSTRIAL LOUVERS INC	COLOR FROM FULL RANGE
J	FLASHING, COPING, GUTTERS	FIRESTONE BUILDING PRODUCTS	SILVER METALLIC
K	WOOD BOARD STEEL FRAME GATE		CEDAR WOOD, CLEAR FINISHED STEEL
L	FLAGPOLE		CLEAR FINISH ON STEEL

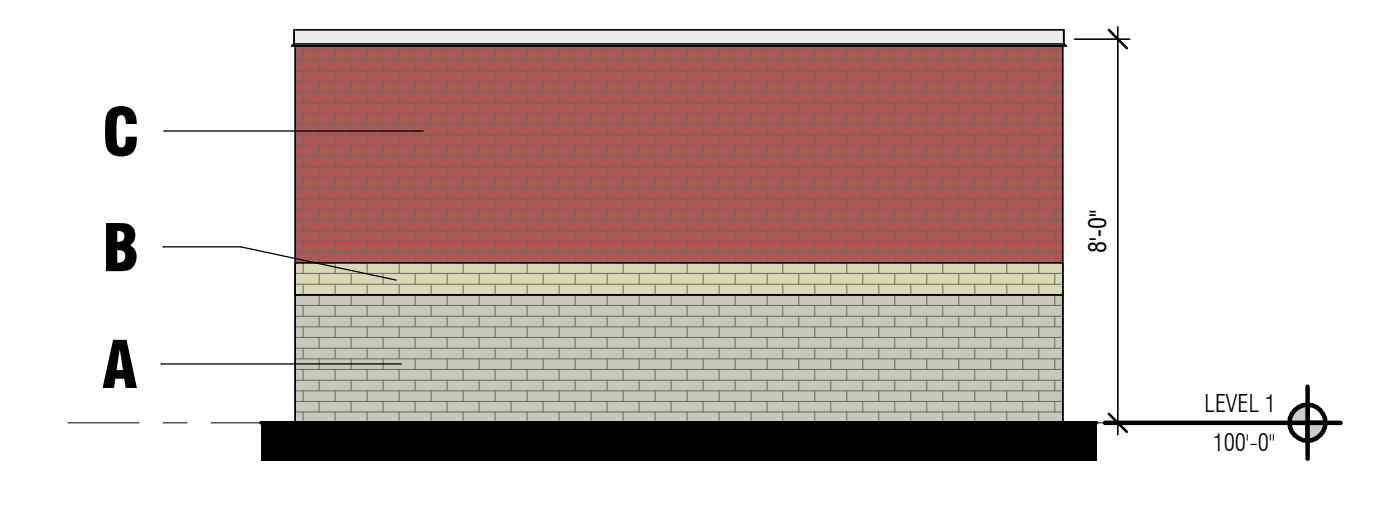




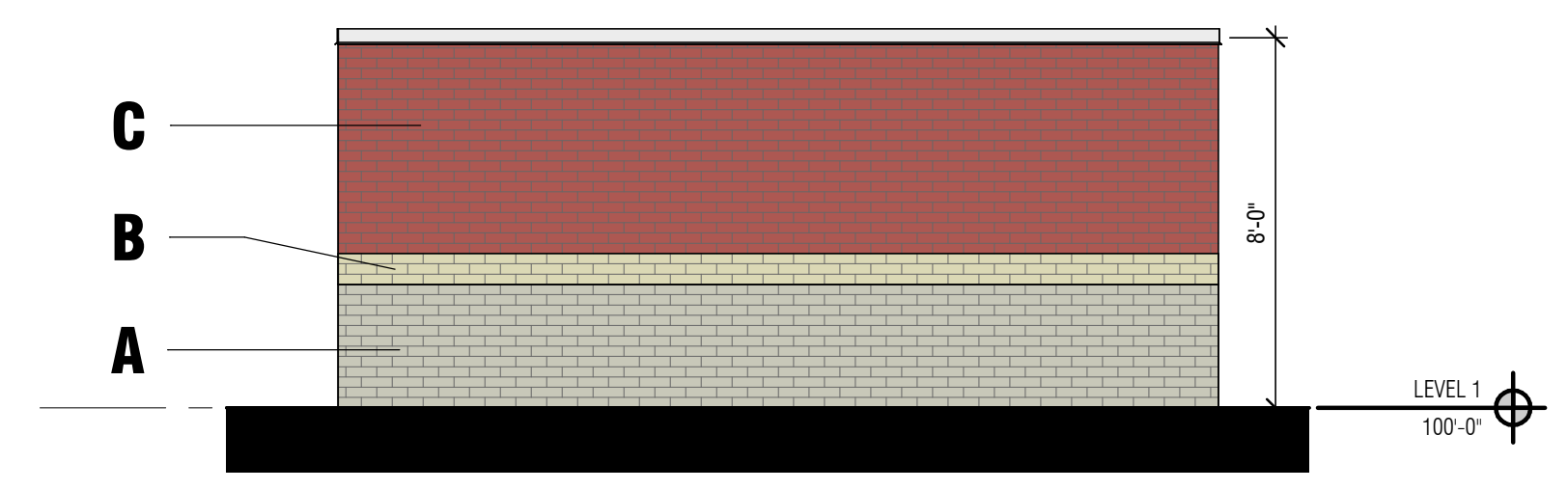
2 ENLARGED PLAN - MECHANICAL ENCLOSURE
PRES4.00 1/4" = 1'-0"



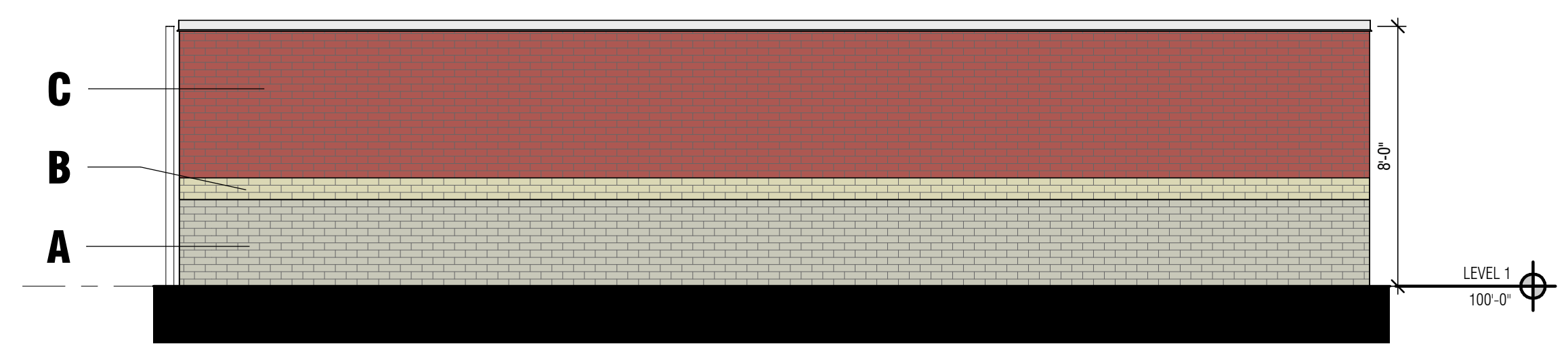
8 NORTH ELEVATION MECHANICAL ENCLOSURE
PRES4.00 1/4" = 1'-0"



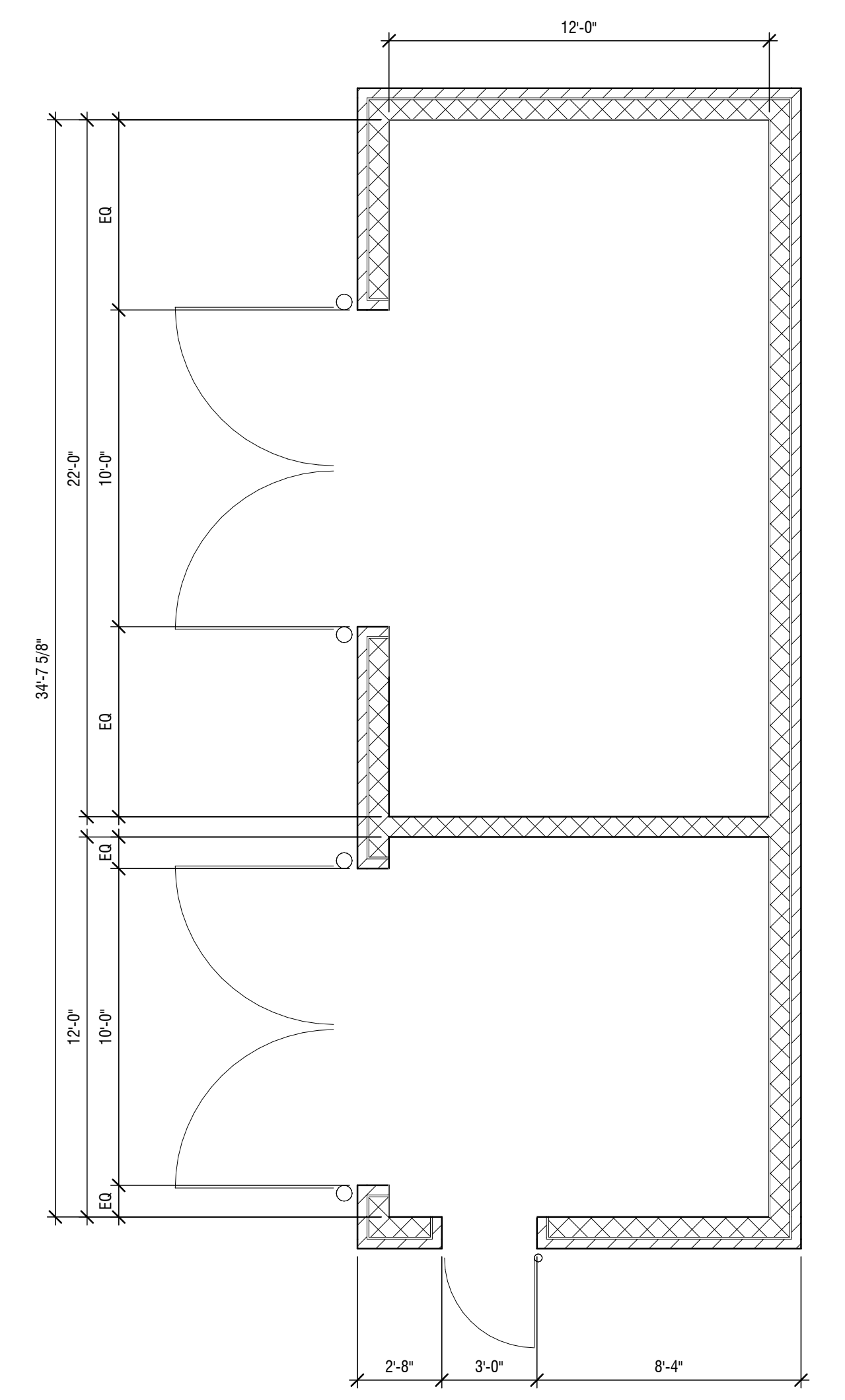
7 SOUTH ELEVATION MECHANICAL ENCLOSURE
PRES4.00 1/4" = 1'-0"



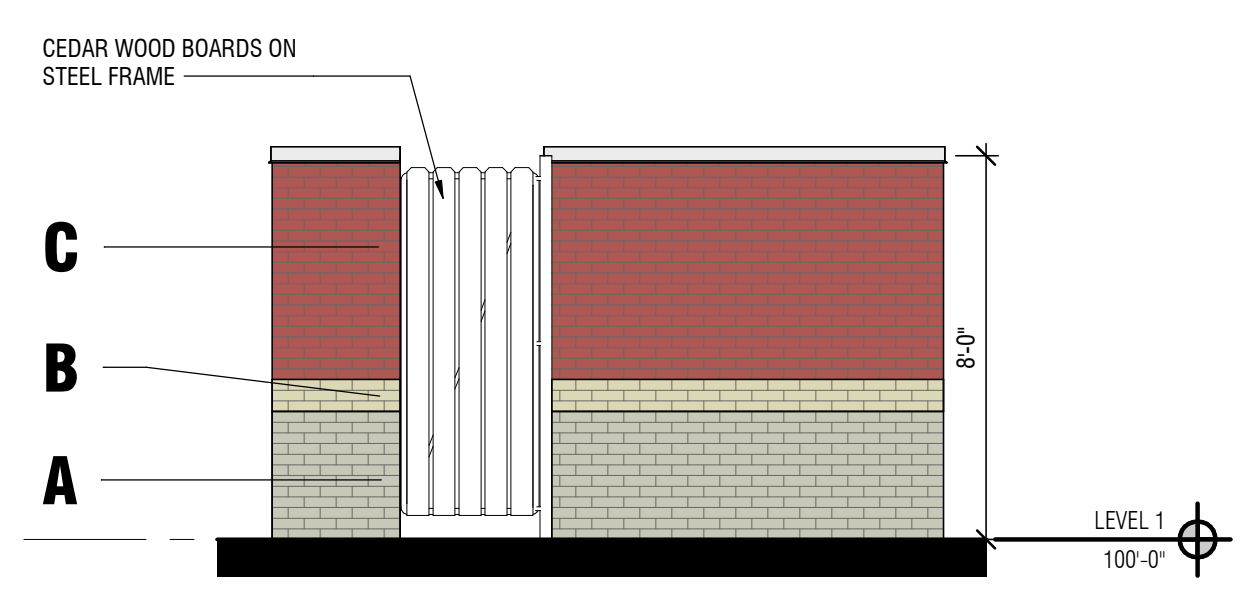
6 WEST/EAST ELEVATION MECHANICAL ENCLOSURE
PRES4.00 1/4" = 1'-0"



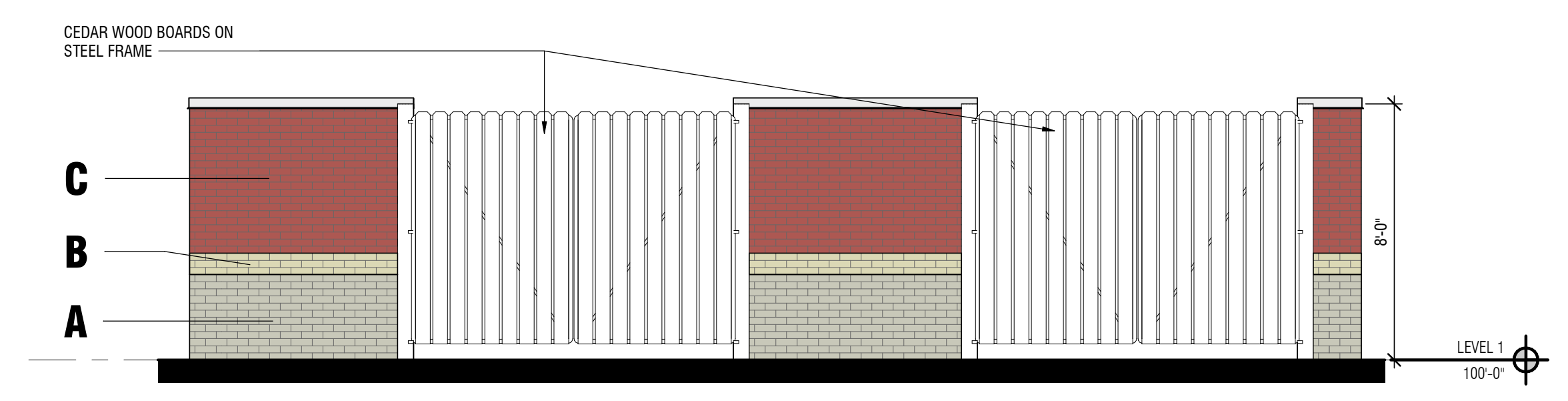
5 EAST ELEVATION TRASH/GENERATOR ENCLOSURE
PRES4.00 1/4" = 1'-0"



1 ENLARGED PLAN - TRASH/GENERATOR ENCLOSURE
PRES4.00 1/4" = 1'-0"



4 SOUTH ELEVATION TRASH/GENERATOR ENCLOSURE
PRES4.00 1/4" = 1'-0"



3 WEST ELEVATION TRASH/GENERATOR ENCLOSURE
PRES4.00 1/4" = 1'-0"

CITY OF PLAINFIELD SIGNAGE REGULATION

§ 7.4D BUILDING IDENTIFICATION SIGNS.

(1) *Type of signs.* Building identification signs shall be limited to wall signs.

(2) *Number of building identification signs.* There shall be no limit to the number of wall building identification signs per facade, provided that the total sign surface area of all wall signs located on each building facade shall not exceed the maximum sign surface area for the building facade upon which such signs are located.

(3) *Maximum sign surface area of building identification signs.*

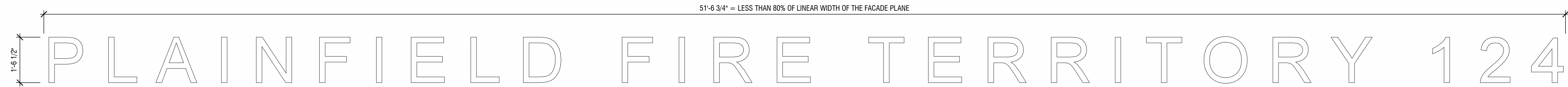
(a) The total sign surface area of all building identification signs, except those located on a building's architectural features (including, but not limited to, gables, towers and the like) oriented to an individual facade shall not exceed:

1. Ten percent of the total area of an individual facade plane of the structure or tenant space on which the sign is located; and
2. The linear measurement of a business identification wall sign, or grouping thereof, shall not exceed 80% of the linear width of the facade plane of the structure or tenant space on which the sign is located.

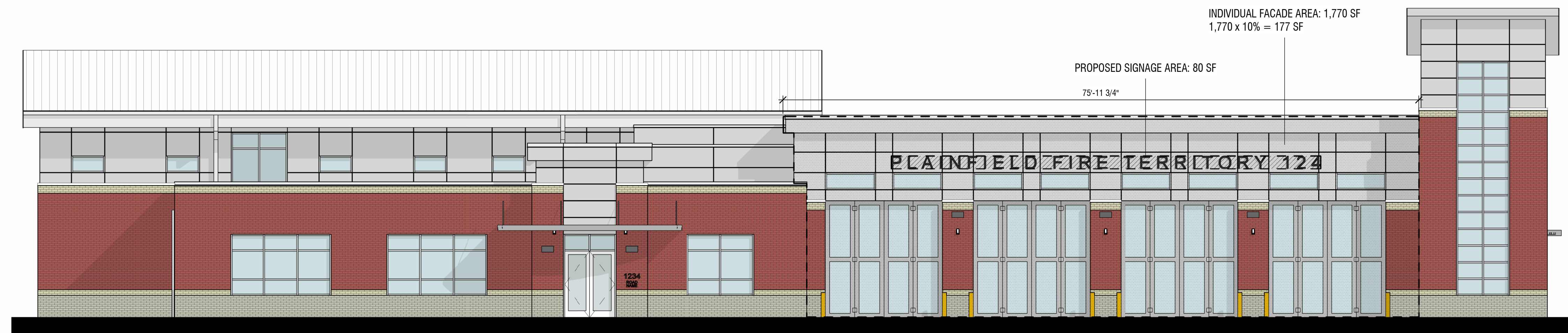
(b) Signs located on an architectural feature shall not exceed 50% of the total area of the facade plane or tenant facade plane area where the sign is located, and the linear width shall not exceed 95% of the linear width of the facade plane or tenant width where the sign is located.

GENERAL SIGN PACKAGE:

- **BUILDING SIGN TO BE INDIVIDUAL LETTERS.**
- **ALUMINUM DIMENSIONAL CHARACTERS.**
- **FONT: OPTIMA.**
- **COLOR: DARK ANODIZED.**



1 ENLARGED SIGNAGE ELEVATION
PRES4.01 1/2" = 1'-0"



2 NORTH EXTERIOR ELEVATION - SIGNAGE
PRES4.01 1/8" = 1'-0"

