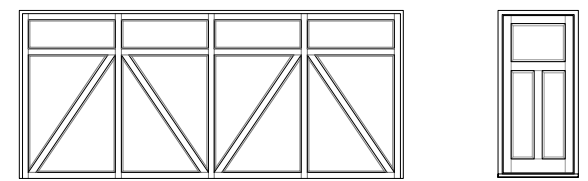


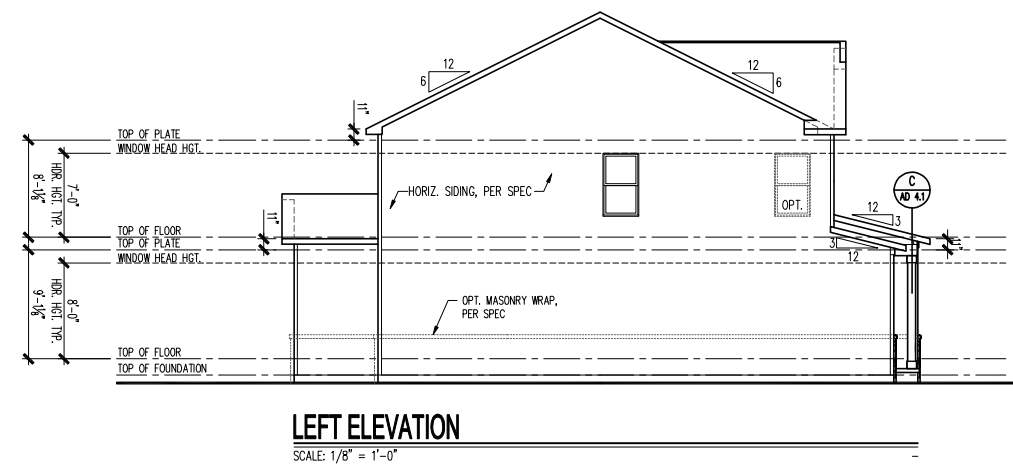
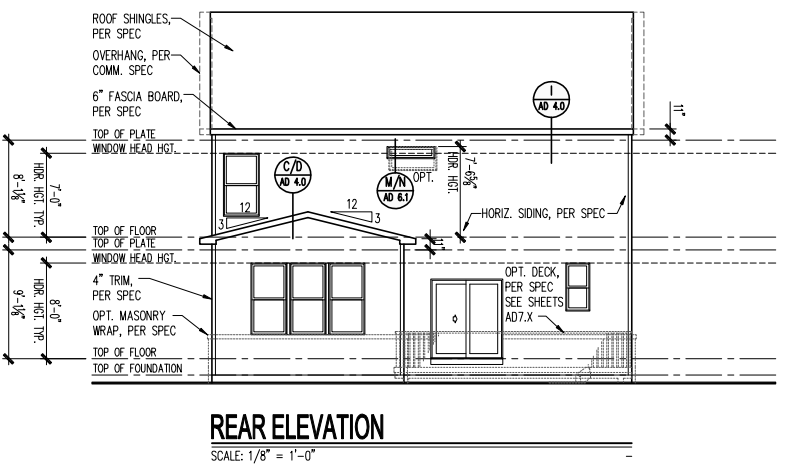
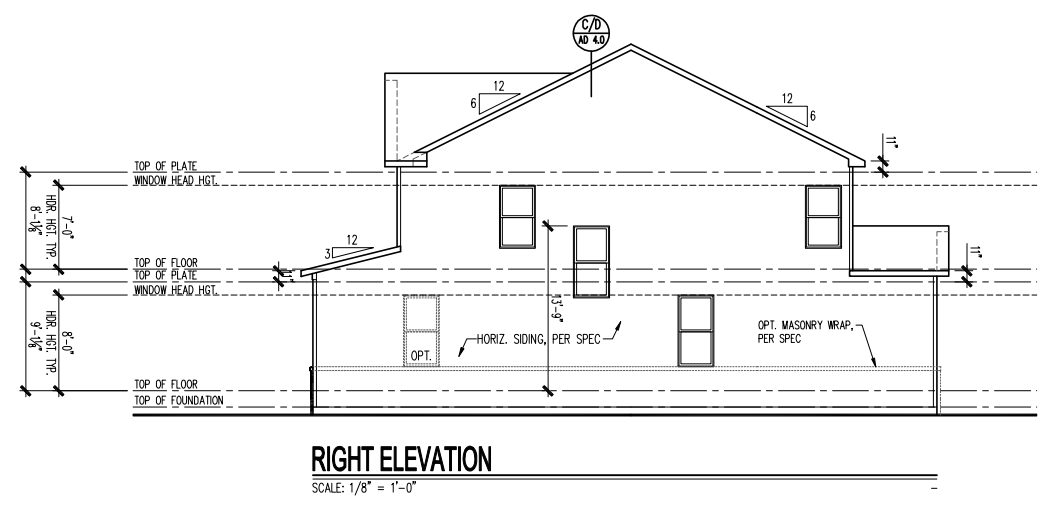
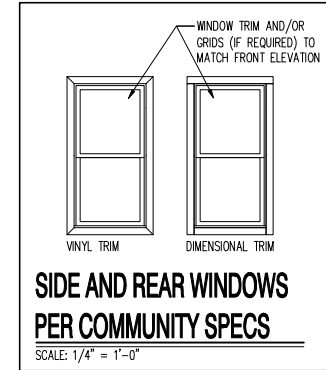
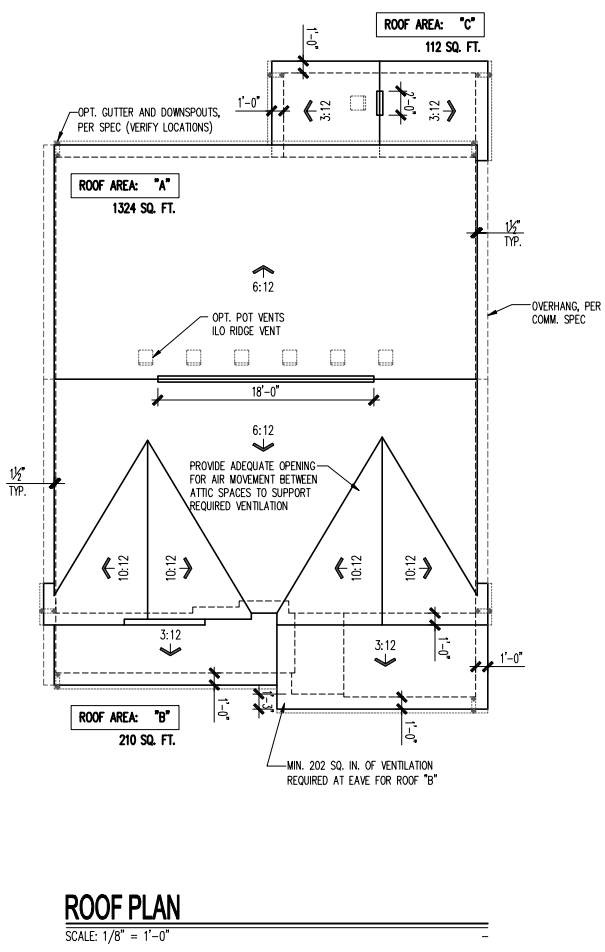


ATTIC VENT SCHEDULE		
FH202 2-CAR FRONT ENTRY	ROOF AREA 'A'	ROOF AREA 'C'
ATTIC AREA (SF)	1323	112
TOTAL NET FREE VENTED AREA REQ.	635 IN ²	54 IN ²
LOW - REQUIRED (*)	318 IN ²	27 IN ²
LOW - ACTUAL w/ EAVE VENTS (**)	336 IN ² 12 EAVE VENTS	28 IN ² 1 EAVE VENTS
LOW - ACTUAL w/ CONTINUOUS VENTED SOFFITS (***)	320 IN ² 32 LINEAR FEET	30 IN ² 3 LINEAR FEET
HIGH - REQUIRED (*)	318 IN ²	27 IN ²
HIGH - ACTUAL w/ POT VENTS (***)	366 IN ² 6 EAVE VENTS	61 IN ² 1 EAVE VENTS
HIGH - ACTUAL w/ CONT. RIDGE VENTS (***)	324 IN ² 18 LINEAR FEET	36 IN ² 2 LINEAR FEET

* REQUIRED NET FREE VENTED AREA IS CALCULATED BY MULTIPLYING THE ATTIC AREA (FT²) BY 1/300 AND THEN MULTIPLYING BY 144 (CONVERTING FT² TO IN²). 50% OF TOTAL NET FREE VENTED AREA IS REQUIRED NEAR THE RIDGE (HIGH) AND 50% IS REQUIRED AT THE SOFFIT (LOW). WHEN BOTH (HIGH) & (LOW) ARE PROVIDED, THE REQ'D NET FREE AREA IS 1/150 OF THE ACTUAL AREA INSTEAD.
 ** ACTUAL NET FREE VENTED SOFFIT AREA IS CALCULATED BY DIVIDING THE REQUIRED (LOW) AREA BY THE MFRS STATED ACTUAL VENTED NET FREE AREA PER VENT:
 LOW OPT 1: EAVE VENTS = 28.0 IN²/VENT (OR)
 LOW OPT 2: CONT. VENTED SOFFITS = 10.0 IN²/LINEAR FT
 *** ACTUAL NET FREE VENTED RIDGE AREA IS CALCULATED BY DIVIDING THE REQUIRED (HIGH) AREA BY THE MFRS STATED ACTUAL VENTED NET AREA PER VENT:
 HIGH OPT 1: POT ROOF VENTS = 61.0 IN²/VENT (OR)
 HIGH OPT 2: CONT. RIDGE VENTS = 18.0 IN²/LINEAR FT



UPGRADED DOOR OPTION
SCALE: 1/4" = 1'-0"



PLOTTED: October 18, 2024 / Gnu / A3-HR301_2FB1.DWG
 NOTE: SCALES NOTED ON DRAWINGS RELATE TO FULL SIZE PLOTS ON 22x34" SHEETS - 11x17 SHEETS REPRESENT 1/2 SCALE PLOTS
 (c) Copyright Pulte Home Corporation - 2024

North Area
 1900 E. Golf Road, - Suite 300
 Schaumburg, Illinois 60173



Heartland 301
 2 Car Front Entry
 Front, Side and Rear Elevations, Roof Plan and Ventilation Schedule

PRODUCTION MANAGER
 Rick Storkey
 INITIAL RELEASE DATE:
 11/01/2024
 CURRENT RELEASE DATE:
 11/01/2024

REV #	DATE	DESCRIPTION

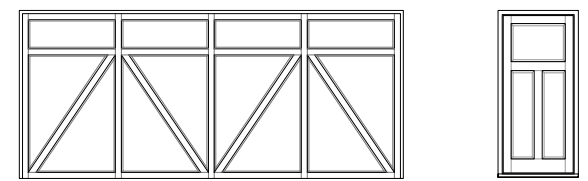
GARAGE HANDING
GARAGE LEFT

PLAN NAME
WALL STREET
 NPC PLAN NUMBER
3112-300
 LAWSON PLAN ID
62632

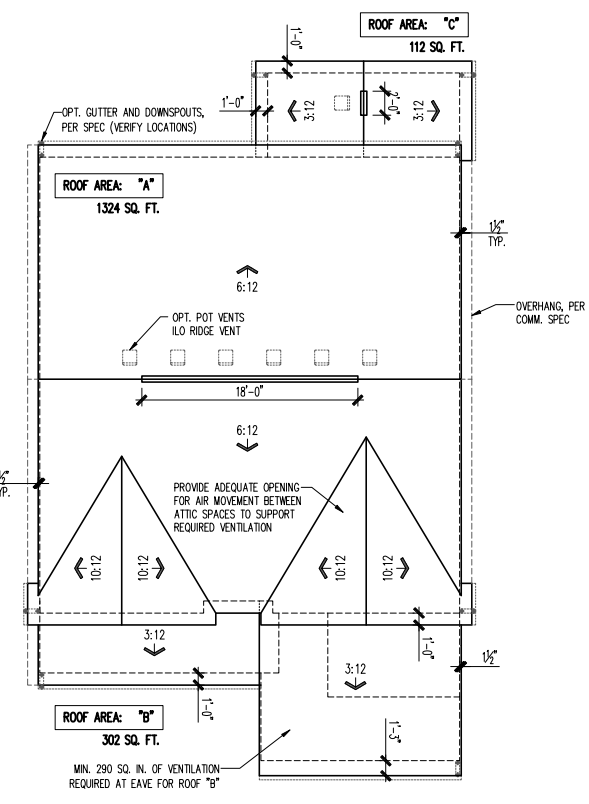
SHEET
A3-HR301
2FB.1

ATTIC VENT SCHEDULE			
HR301 2-CAR FRONT ENTRY	ROOF AREA 'A'	ROOF AREA 'C'	
ATTIC AREA (SF)	1324	112	
TOTAL NET FREE VENTED AREA REQ.	636 IN ²	54 IN ²	
LOW - REQUIRED (*)	318 IN ²	27 IN ²	
LOW - ACTUAL w/ EAVE VENTS (**)	336 IN ² 12 EAVE VENTS	28 IN ² 1 EAVE VENTS	
LOW - ACTUAL w/ CONTINUOUS VENTED SOFFITS (***)	320 IN ² 32 LINEAR FEET	30 IN ² 3 LINEAR FEET	
HIGH - REQUIRED (*)	318 IN ²	27 IN ²	
HIGH - ACTUAL w/ POT VENTS (***)	366 IN ² 6 EAVE VENTS	61 IN ² 1 EAVE VENTS	
HIGH - ACTUAL w/ CONT. RIDGE VENTS (****)	324 IN ² 18 LINEAR FEET	36 IN ² 2 LINEAR FEET	

* REQUIRED NET FREE VENTED AREA IS CALCULATED BY MULTIPLYING THE ATTIC AREA (FT²) BY 1/300 AND THEN MULTIPLYING BY 144 (CONVERTING FT² TO IN²). 50% OF TOTAL NET FREE VENTED AREA IS REQUIRED NEAR THE RIDGE (HIGH) AND 50% IS REQUIRED AT THE SOFFIT (LOW). WHEN BOTH (HIGH) & (LOW) ARENT PROVIDED, THE REQ'D NET FREE AREA IS 1/150 OF THE ACTUAL AREA INSTEAD.
 ** ACTUAL NET FREE VENTED SOFFIT AREA IS CALCULATED BY DIVIDING THE REQUIRED (LOW) AREA BY THE MFRS STATED ACTUAL VENTED NET FREE AREA PER VENT:
 LOW OPT 1: EAVE VENTS = 28.0 IN²/VENT (OR)
 LOW OPT 2: CONT. VENTED SOFFITS = 10.0 IN²/LINEAR FT
 *** ACTUAL NET FREE VENTED RIDGE AREA IS CALCULATED BY DIVIDING THE REQUIRED (HIGH) AREA BY THE MFRS STATED ACTUAL VENTED NET AREA PER VENT:
 HIGH OPT 1: POT ROOF VENTS = 61.0 IN²/VENT (OR)
 HIGH OPT 2: CONT. RIDGE VENTS = 18.0 IN²/LINEAR FT



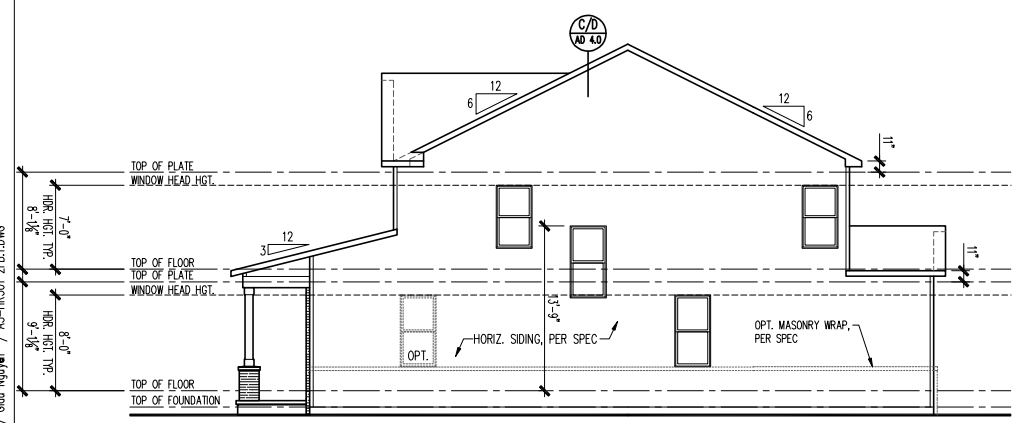
UPGRADED DOOR OPTION
SCALE: 1/4" = 1'-0"



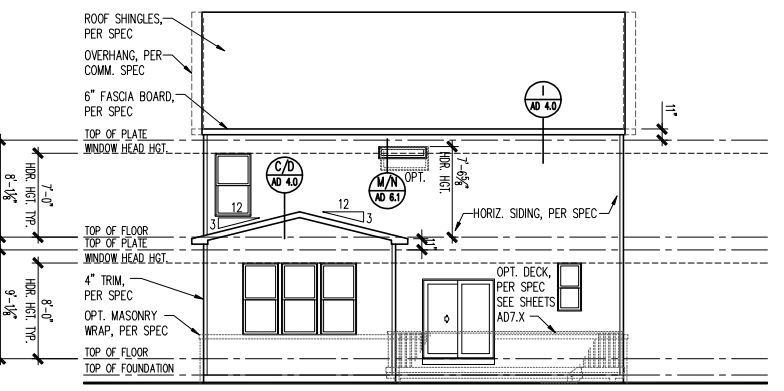
ROOF PLAN
SCALE: 1/8" = 1'-0"



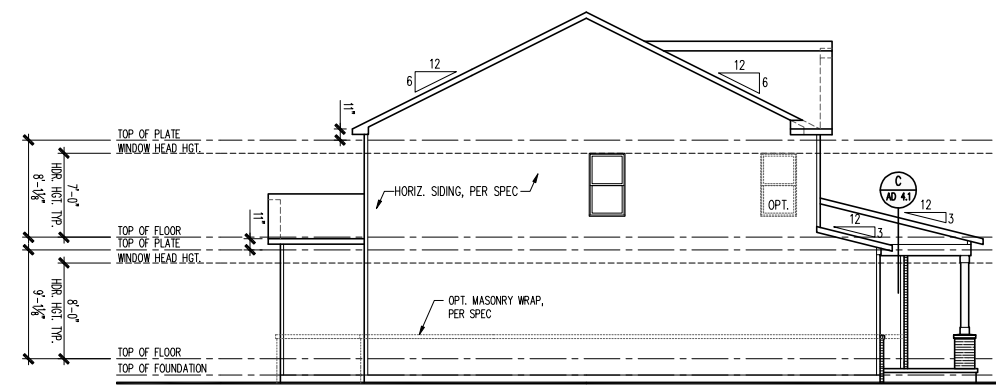
FRONT ELEVATION - HR301
SCALE: 1/4" = 1'-0"



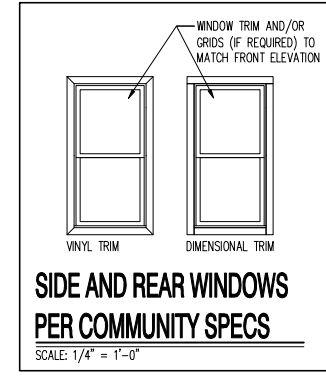
RIGHT ELEVATION
SCALE: 1/8" = 1'-0"



REAR ELEVATION
SCALE: 1/8" = 1'-0"



LEFT ELEVATION
SCALE: 1/8" = 1'-0"



**SIDE AND REAR WINDOWS
PER COMMUNITY SPECS**
SCALE: 1/4" = 1'-0"

