

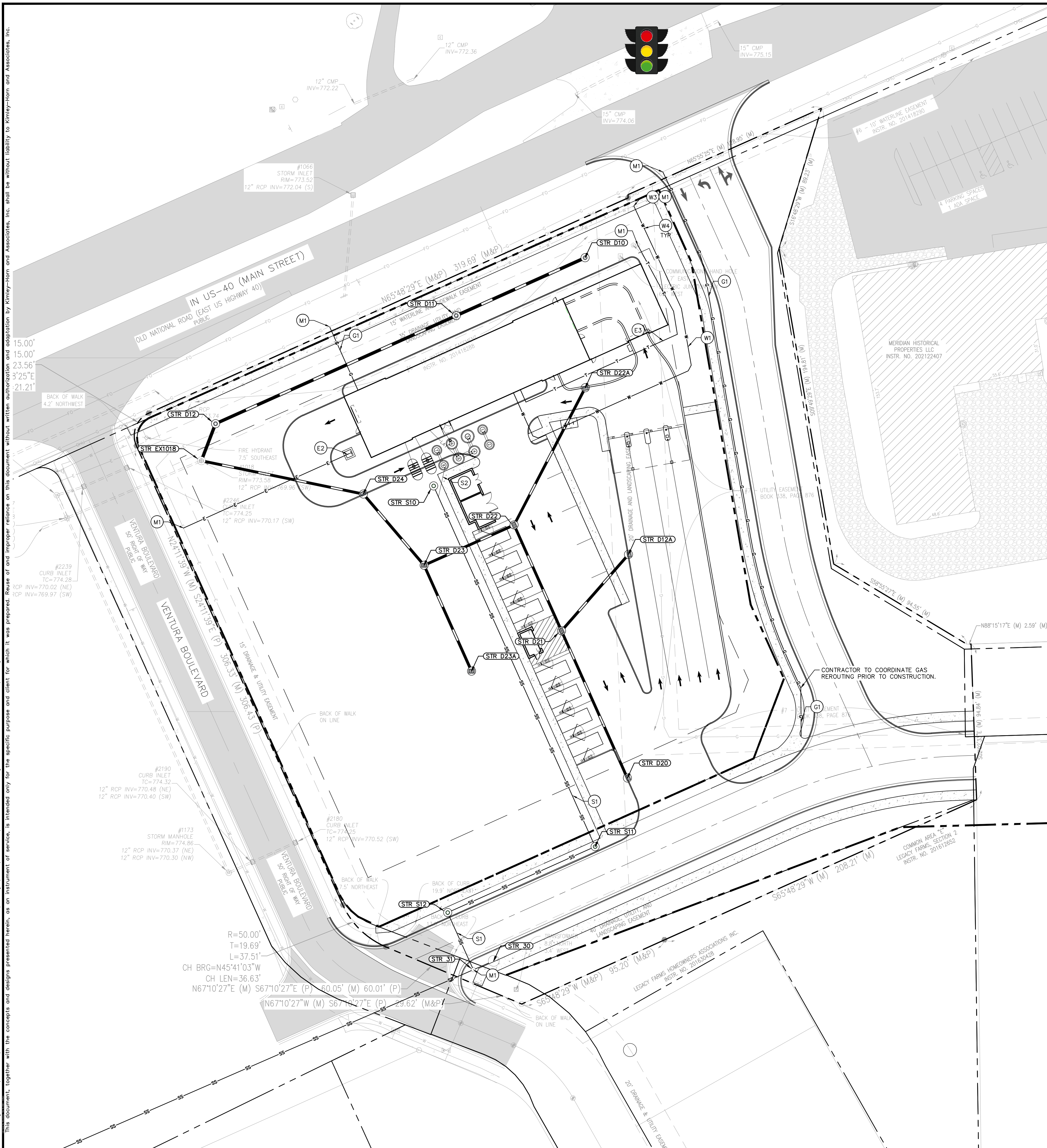
Drawing name: K:\INDO\DEV\17035804\_Crew Carwash\_Ventura Blvd\_Planfiled\_V12 Design\CADD\PlanSheets\C60-UTILITY PLAN.dwg C6.0 Feb. 18, 2025 3:56pm by: Nick Kachur  
 This document, together with the concepts and designs presented herein, is intended only for the specific purpose and client for which it was prepared. Reuse of and improper reliance on this document without written authorization and adaptation by Kimley-Horn and Associates, Inc. shall be without liability to Kimley-Horn and Associates, Inc.

Indiana Utilities Protection Service

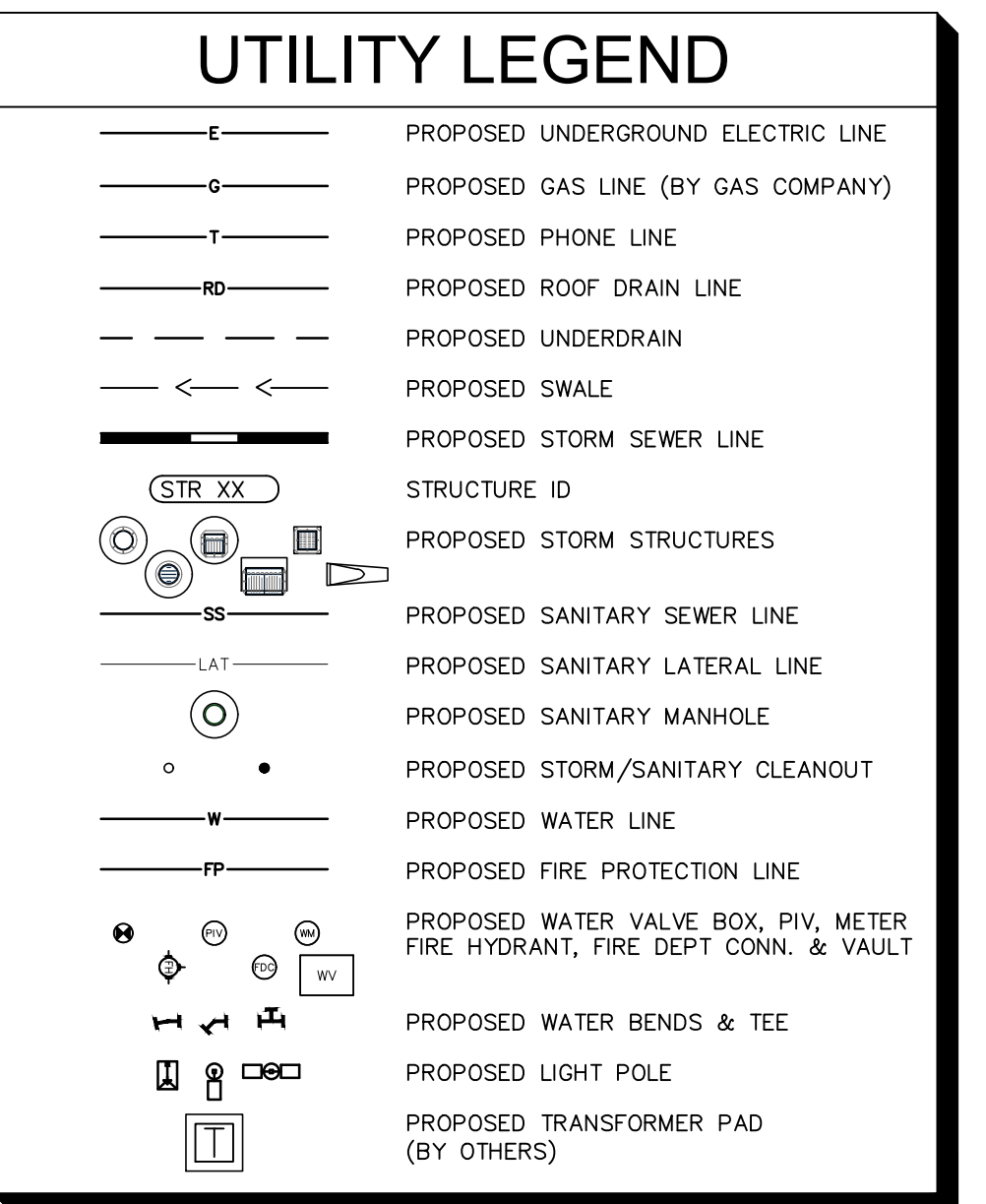
# Call 811

before you dig

GRAPHIC SCALE IN FEET  
0 15' 30' 60'



- ### UTILITY NOTES
- #### GENERAL UTILITY NOTES
- ALL WATER LINES SHALL BE PVC C900 DR-14 OR DUCTILE IRON CL 350.
  - ALL SANITARY SEWER LINES SHALL BE PVC MEETING, ASTM D-3034 SDR 35 EXCEPT FOR SANITARY SEWER THAT CROSSES ABOVE WATER MAIN, THIS PIPE SHALL BE AWWA C900 (UNLESS WATER MAIN CASING IS UTILIZED). PROVIDE 36" MINIMUM COVER (PER IDEM).
  - CONTRACTOR SHALL COORDINATE ANY DISRUPTIONS TO EXISTING UTILITY SERVICES WITH ADJACENT PROPERTY OWNERS.
  - ALL ELECTRIC AND TELEPHONE EXTENSIONS INCLUDING SERVICE LINES SHALL BE CONSTRUCTED TO THE APPROPRIATE UTILITY COMPANY SPECIFICATIONS. ALL UTILITY DISCONNECTIONS SHALL BE COORDINATED WITH THE DESIGNATED UTILITY COMPANIES.
  - CONSTRUCTION SHALL NOT START ON ANY PUBLIC UTILITY SYSTEM UNTIL WRITTEN APPROVAL HAS BEEN RECEIVED BY THE ENGINEER FROM THE APPROPRIATE GOVERNING AUTHORITY AND CONTRACTOR HAS BEEN NOTIFIED BY THE ENGINEER.
  - CONTRACTOR TO CALL INDIANA 811 (811 OR 800-382-5544) TO COORDINATE FIELD LOCATIONS OF EXISTING UNDERGROUND UTILITIES BEFORE ORDERING MATERIALS OR COMMENCING CONSTRUCTION. NOTIFY ENGINEER OF ANY DISCREPANCIES IMMEDIATELY.
  - PRIOR TO THE CONSTRUCTION OF OR CONNECTION TO ANY STORM DRAIN, SANITARY SEWER, WATER MAIN OR ANY OTHER UTILITIES, THE CONTRACTOR SHALL EXCAVATE, VERIFY AND CALCULATE ALL POINTS OF CONNECTION AND ALL UTILITY CROSSINGS AND INFORM THE ENGINEER AND THE OWNER/ DEVELOPER OF ANY CONFLICT OR REQUIRED DEVIATIONS FROM THE PLAN. NOTIFICATION SHALL BE MADE A MINIMUM OF 72 HOURS PRIOR TO CONSTRUCTION. THE ENGINEER AND ITS CLIENTS SHALL BE HELD HARMLESS IN THE EVENT THAT THE CONTRACTOR FAILS TO MAKE SUCH NOTIFICATION. THE MUNICIPALITY SHALL BE NOTIFIED OF ANY AND ALL CHANGES TO THE DESIGN PLANS.
  - CONTRACTOR SHALL COMPLY COMPLETELY WITH THE LATEST STANDARDS OF OSHA DIRECTIVES OR ANY OTHER AGENCY HAVING JURISDICTION FOR EXCAVATION AND TRENCHING PROCEDURES. THE CONTRACTOR SHALL USE SUPPORT SYSTEMS AND INFORM THE ENGINEER AND THE OWNER/ DEVELOPER OF ANY CONFLICT OR REQUIRED DEVIATIONS FROM THE PLAN. NOTIFICATION SHALL BE MADE A MINIMUM OF 72 HOURS PRIOR TO CONSTRUCTION. THE ENGINEER AND ITS CLIENTS SHALL BE HELD HARMLESS IN THE EVENT THAT THE CONTRACTOR FAILS TO MAKE SUCH NOTIFICATION. THE MUNICIPALITY SHALL BE NOTIFIED OF ANY AND ALL CHANGES TO THE DESIGN PLANS.
  - CONTRACTOR TO AVOID DISRUPTION OF ANY ADJACENT TENANT'S TRAFFIC OPERATIONS DURING INSTALLATION OF UTILITIES.
  - ALL DIMENSIONS ARE TO CENTERLINE OF PIPE OR CENTER OF MANHOLE UNLESS NOTED OTHERWISE.
  - SEE ARCHITECTURAL AND MEP PLANS FOR EXACT UTILITY CONNECTION LOCATIONS AT BUILDING.
  - LIGHT POLES SHOWN FOR COORDINATION PURPOSES ONLY AND DO NOT REPRESENT ACTUAL SIZE. SEE SITE LIGHTING PLANS BY OTHERS FOR MORE INFORMATION.
  - SEE DETAILS FOR LOCATING STORM STRUCTURES WITHIN THE CURB LINE.
  - STORMWATER FACILITIES MUST BE FUNCTIONAL BEFORE BUILDING CONSTRUCTION BEGINS.



- ### KEY NOTES
- (D) DRAINAGE STORM SEWER
- 4" ROOF DRAIN CLEANOUT
  - 6" HDPE ROOF DRAIN LINE @ 1.00% MIN. SLOPE
  - CONNECT ROOF DRAIN TO STRUCTURE
  - PERFORATED UNDERDRAIN
- (S) SANITARY SEWER
- 8" PVC SANITARY MAIN @ 0.40% MIN. SLOPE
  - 6" PVC SANITARY LATERAL LINE @ 1.04% MIN. SLOPE
- (W) WATER LINE
- WATER BEND
  - WATER METER (INSIDE BUILDING)
  - CONNECT TO EXISTING WATER (TAP OR TEE)
  - WATER LINE
- (G) GAS LINE
- GAS SERVICE LINE
- (E) ELECTRIC / TELEPHONE / CABLE
- ELECTRIC SERVICE LINE
  - ELECTRIC TRANSFORMER
  - TELECOMMUNICATIONS LINE
- (M) MISCELLANEOUS
- CONTRACTOR TO COORDINATE CONNECTION WITH UTILITY PROVIDER.
  - CONTRACTOR TO FIELD VERIFY LOCATION, DEPTH AND SIZE OF EXISTING UTILITY TO ENSURE CONFLICTS DO NOT EXIST WITH PROPOSED UTILITIES.
  - POTENTIAL UTILITY CONFLICT. ALL (WATER, SANITARY, DRAINAGE STORM) CROSSINGS TO HAVE 18" MIN. VERTICAL CLEARANCE. ALL WATER SERVICE LINES TO REMAIN PERPENDICULAR AT CROSSING IN SUCH THAT IT FORMS AN ANGLE BETWEEN 45° AND 90°.
- NOTE: CONTRACTOR TO VERIFY WATER, SANITARY, GAS, & ETC LOCATIONS, SIZES AND TYPES WITH MEP PLANS PRIOR TO ORDERING MATERIALS.



 6020 KIMLEY-HORN AND ASSOCIATES, INC. 500 EAST WETH STREET, SUITE 300, INDIANAPOLIS, IN 46240 WWW.KIMLEY-HORN.COM	 NOT APPROVED FOR CONSTRUCTION NICHOLAS S. ... REGISTERED PROFESSIONAL ENGINEER
 <b>CREW CARWASH</b> US 40 & VENTURA BLVD. PLAINFIELD IN 46168	<b>UTILITY PLAN</b>
ORIGINAL ISSUE: 10/23/2025 KHA PROJECT NO. 170358043 SHEET NUMBER <b>C6.0</b>	REVISIONS NO. DATE BY