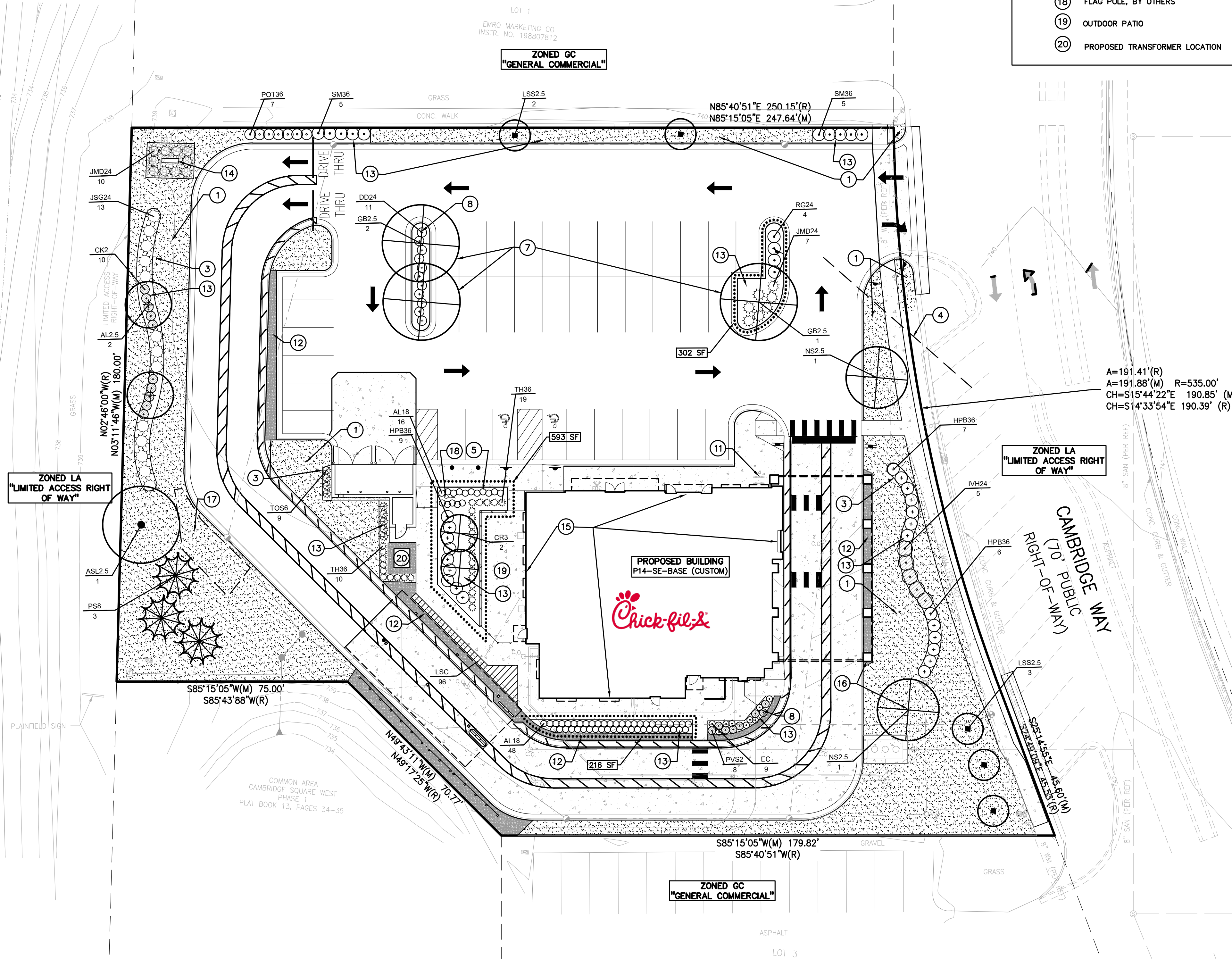


PLANT SCHEDULE L-1.0

CODE	QTY	BOTANICAL NAME	COMMON NAME	SIZE	CONTAINER	SPACING	DESIGNATION
DECIDUOUS TREES							
ASL2.5	1	ACER SACCHARUM 'LEGACY'	LEGACY SUGAR MAPLE	2.5" CAL.	B&B	PER PLAN	NATIVE
GB2.5	3	GINKGO BILOBA MALE ONLY	MAIDENHAIR TREE	2.5" CAL.	B&B	PER PLAN	NON-NATIVE
LSS2.5	5	LIQUIDAMBAR STYRACIFLUA 'SLENDER SILHOUETTE'	SLENDER SILHOUETTE SWEET GUM	2.5" CAL.	B&B	PER PLAN	NON-NATIVE
NS2.5	2	NYSSA SYLVATICA	TUPELO	2.5" CAL.	B&B	PER PLAN	NATIVE
	11	SUBTOTAL:					
EVERGREEN TREES							
PS8	3	PINUS STROBUS	EASTERN WHITE PINE	8" HT.	B&B	PER PLAN	NATIVE
	3	SUBTOTAL:					
ORNAMENTAL TREES							
AL2.5	2	AMELANCHIER LAEVIS	ALLEGHENY SERVICEBERRY	2.5" CAL.	B&B	PER PLAN	NATIVE
CR3	2	CERCIS CANADENSIS 'JINZ'	THE RISING SUN™ EASTERN REDBUD	3" CAL.	B&B	PER PLAN	NATIVE
	4	SUBTOTAL:					
SHRUBS							
AL18	64	ARONIA MELANOCARPA 'UCONNAN165'	LOW SCAPE MOUND® BLACK CHOKEBERRY	18" HT	B&B OR CONT.	24" O.C.	NATIVE
DD24	11	DEUTZIA X 'NDX2'	YUKI CHERRY BLOSSOM® DEUTZIA	24" HT.	B&B OR CONT.	3'	NON-NATIVE
HPB36	22	HYDRANGEA PANICULATA 'BOBO'	BOBO HYDRANGEA	36" HT.	B&B OR CONT.	4' O.C.	NON-NATIVE
IVH24	5	ITEA VIRGINICA 'HENRY'S GARNET'	HENRY'S GARNET SWEETSPIRE	24" HT.	B&B OR CONT.	5 O.C.	NON-NATIVE
JSG24	13	JUNIPERUS CHINENSIS 'SEA GREEN'	SEA GREEN JUNIPER	24" SPRD	B&B OR CONT.	5 O.C.	NON-NATIVE
JMD24	17	JUNIPERUS SABINA 'MONARD'	MOOR-DENSE® JUNIPER	24" SPRD	B&B OR CONT.	4' O.C.	NON-NATIVE
POT36	7	PHYSCOCARPUS OPUULIFOLIUS 'TINY WINE'	TINY WINE NINEBARK	36" HT.	B&B OR CONT.	42" O.C.	NATIVE
RG24	4	RHUS AROMATICA 'GRO-LOW'	GRO-LOW FRAGRANT SUMAC	24" SPRD	B&B OR CONT.	4' O.C.	NATIVE
SM36	10	SYRINGA MEYERI 'PALBIN'	DWARF KOREAN LILAC	36" HT.	B&B OR CONT.	4' O.C.	NON-NATIVE
TH36	29	TAXUS X MEDIA 'HICKSII'	HICKS ANGLLO-JAPANESE YEW	3" HT.	B&B OR CONT.	30" O.C.	NON-NATIVE
TOS6	9	THUJA OCCIDENTALIS 'SMARAGD'	EMERALD GREEN ARBORVITAE	6" HT.	B&B	36" O.C.	NATIVE
	191	SUBTOTAL:					
PERENNIALS							
CK2	10	CALAMAGROSTIS X ACUTIFLORA 'KARL FOERSTER'	KARL FOERSTER FEATHER REED GRASS	1 GAL.	POT	36" O.C.	NON-NATIVE
EC	9	ECHINACEA X 'CHEYENNE SPIRIT'	CHEYENNE SPIRIT CONEFLOWER	1 GAL.	POT	2' O.C.	NATIVE
PVS2	8	PANICUM VIRGATUM 'SHENANDOAH'	SHENANDOAH SWITCH GRASS	1 GAL.	POT	30" O.C.	NATIVE
LSC	96	LIRIOPE SPIGATA	CREeping LILYTURF	1 GAL.	POT	12" O.C.	NON-NATIVE
	123	SUBTOTAL:					

STATE ROAD 267 (QUAKER BLVD)
(PUBLIC RIGHT-OF-WAY)



- KEY NOTES:**
- IRRIGATED SOD LAWN, TYP.
 - RESTORE NON-IRRIGATED SEED LAWN, TYP.
 - ALUMINUM EDGING BETWEEN LAWN/ROCK AND PLANT BED, TYP.
 - 25' CLEAR VISION TRIANGLE, TYP.
 - FOUNDING SHRUBS; EVG AND/OR DEC.
 - EXISTING STREET TREE, TYP.
 - PARKING LOT TREE, TYP.
 - ADDITIONAL PLANTINGS NOT REQUIRED BY ORDINANCE
 - EXISTING TREE TO REMAIN, TYP. NOT TO BLOCK VISIBILITY OF BUILDING AND SIGNAGE. PRUNE AS NEEDED. REMOVE ALL DEAD BRANCHES AND PLANT MATERIAL.
 - TREE PROTECTION FENCING AROUND EX. TREE TO REMAIN, TYP.
 - BIKE RACK
 - RIVER ROCK EDGE OVER WEED FABRIC, SEE DETAIL SHEET L-101; TO BE INSTALLED PER CLIENT STDS.; ADJ. TO BLDG. AND WITHIN INTERIOR DRIVE THRU LANE
 - 3" DEPTH SHREDDED HARDWOOD MULCH WITH PRE-EMERGENT, PER CLIENT STDS.; SHREDDED HARDWOOD MULCH TO BE INSTALLED IN BEDS OUTSIDE THE INTERIOR DRIVE THRU LANE
 - PROPOSED MONUMENT SIGN SEE CIVIL DWGS.
 - POTENTIAL SITE OF CHICK-FIL-A BLDG SIGN/LOGO; NO PLANTINGS TO BLOCK FINAL LOCATION, SHIFT SHRUBS AND TREES AS NECESSARY
 - TREES TO NOT CONFLICT WITH OVERHEAD CANOPIES AT DRIVE THRU AND BLDG. COLUMNAR TYPE TREE PROPOSED OR SHIFT TREE AS NECESSARY IF PRESENT.
 - POTENTIAL SNOW STORAGE AREA
 - FLAG POLE, BY OTHERS
 - OUTDOOR PATIO
 - PROPOSED TRANSFORMER LOCATION

KEY/ LEGEND

- = REQUIRED INTERIOR PARKING LOT TREES
- = REQUIRED PERIMETER PARKING LOT TREE
- = SHRUBS
- = EVG SHRUBS
- = IRRIGATED SOD LAWN APPROX. 12,192 SF, FIELD VERIFY QTY.
- = ROCK EDGE/ MULCH, APPROX. 1000 SF, FIELD VERIFY QTY. SEE KEY NOTE #12 THIS PAGE AND DETAIL SHEET L-101.
- = PERENNIAL / ORNAMENTAL GRASS
- = POTENTIAL SNOW STORAGE AREA
- = FOUNDATION LANDSCAPE AREA TOTAL AREA 1111 SQ FT

SHREDDED HARDWOOD MULCH SEE KEY NOTE #13 PER CLIENT STDS.
ALUMINUM EDGING; 603 LF, FIELD VERIFY QTY.

NOTE: ALL LANDSCAPED AREAS TO BE IRRIGATED WITH AN IRRIGATION SYSTEM. IRRIGATION BY OTHERS
SEE SHEET L-101 FOR GENERAL PLANTING NOTES AND LANDSCAPE DETAILS

REQUIRED LANDSCAPE CALCULATIONS:
PER ZONING ORDINANCE OF PLAINFIELD, INDIANA
ZONING: GC, GENERAL COMMERCIAL
PER ARTICLE 4.7 LANDSCAPE PROVISIONS AND THE GATEWAY CORRIDOR

SECTION 4.7A AND 4.7C PERIMETER LANDSCAPE OF PARKING LOTS:
REQUIRED: GC ZONE ADJ TO GC ZONE EQUALS USE OF LEVEL 1 BUFFER YARD LEVEL 1 = ANY COMBINATION OF PLANTS SELECTED FROM THE PLANT CATEGORIES LISTED IN TABLE 4.7C WHICH EQUALS OR EXCEEDS THE PLANT UNIT VALUE (PUV) OF 1.0 PER 100 LF. GC ZONE ADJ TO LA TO THE EAST AND WEST USE OF LEVEL 2 UNIT VALUE OF 2.0/100 LF 25% OF PUV MUST BE DEC
REQUIRED:
NORTH: PER. 250 LF/100 = 2.5 PUV MIN.
WEST(FRONT)X2: PER. 180 LF/100 X 2 = 3.6 PUV MIN.
SOUTH: PER. 326 LF/100 = 3.26 PUV MIN.
EAST(FRONT)X2: PER. 238 LF/100 X 2 = 4.76 PUV MIN.
TOTAL OF 14.12 PUV REQUIRED
PROVIDED:
NORTH: 17, 36"HT SHRUB (X.1)=1.7 AND 2, DEC (X.75)= 1.5 PUV = 3.2 PUV AND 46% DEC WEST(FRONT) 13, 1 DEC TREE X.75=.75; 2 ORN TREE X.75=1.5; 3 EVG X.5=1.5 =3.75 PUV AND 60% DEC
SOUTH: 9, 36"HT SHRUB X.1=.9; 2TREE X.75=1.5; 2 EVG X.5=1 =3.4 PUV AND 44% DEC EAST(FRONT)X2: 18, 36"HT SHRUB X.1=1.8; 3, DEC TREE X.75 = 2.25; 1 ORN X.75=.75= TOTAL =4.8 PUV AND 65.5% DEC (2.5+3.75+3.4+4.8)=15.15 PUV (THIS SECTION 4.7A&C)

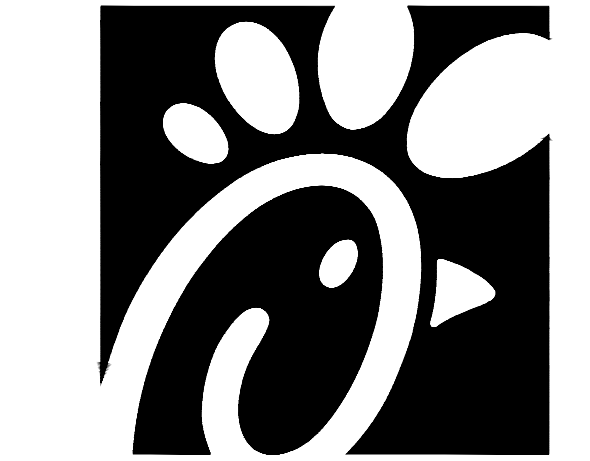
SECTION 4.7E FOUNDATION PLANTINGS FOR ALL NEW BLDGS:
REQUIRED: FOUNDATION PLANT AREAS SHALL BE CALCULATED INDIVIDUALLY PER BLDG SIDE. PLANT AREA SHALL HAVE A TOTAL AREA IN SF NOT LESS THAN 2X THE LENGTH OF THE BLDG WALL. FDN. PLANTS MAY BE ADJ. TO BLDG OR WITHIN 15' OF BLDG; MIN OF 6' WIDE. FDN PLANTS MAY OVERLAP WITH PERIMETER YARD LANDSCAPE
LEVEL 1 FOUNDATION PUV REQUIRED; TABLE 4.7-B:
1. PLANT UNIT FOR EA. 100 LF; 295 LF TOT. BLDG/100 = 2.95 PLANT UNIT REQ.
REQUIRED:
NORTH BLDG. SIDE = 83 LF X 2 = 166 SF AREA
SOUTH BLDG. SIDE = 73 LF X 2 = 146 SF AREA
EAST FRONTAGE BLDG. SIDE = 83 LF X 2 = 166 SF AREA
WEST FRONTAGE BLDG. SIDE = 83 LF X 2 = 166 SF AREA
(166 SF + 146 SF + 166 SF + 166 SF = 644 SF)
= TOTAL 644 SF AND 6.4 PUV REQ.
PROVIDED:
593 SF; 37, 36" SHRUBS(X.1) = 3.7 + 19.18" FOUND SHRUBS (X.025)=4.75 + 2, ORN TREE (X.75) 1.5 = 5.675 PUV
AND 216 SF AREA FDN. SHRUBS 48 (X.025) = 1.2 PUV
AND 302 SF AND 11 FOUNDATION SHRUBS (X.025) = .275 (5.675 + 1.2 + .275) = 7.15 TOTAL PUV PROVIDED (THIS SECTION 4.7E)

SECTION 4.7F INTERIOR PARKING LOT LANDSCAPE:
REQUIRED: ALL NEW PARKING LOT AREAS SHALL INCLUDE 1 PARKING ISLAND, 8' X 18' MIN. PER EVERY 15 SPACES, WITH 1 TREE PER ISLAND. THE PARKING AREA FACING THE FRONT OR SIDE YARD SHALL BE SCREENED BY A COMPACT HEDGE ROW OF 24-30" HT. PLANTS AT 3' OC. OR HEDGE PLANT IN COMBINATION WITH ORN. FENCE/ WALL OR BERM PROVIDED THAT THE PLANT UNIT VALUE OF THE HEDGE/ WALL/ BERM EQUALS 1.5X.
39 SPACES / 15 = 2.6 TREE MIN.
PROVIDED:
3 TREES (3, TREES X .75 = 2.25 PUV) + CONTINUOUS SHRUB HEDGE AT PARKING AREA FACING WEST FRONTAGE; 13, 36" HT EVG HEDGE (X .1) = 1.3 PUV (2.25 + 1.3) = 3.55 TOTAL PUV PROVIDED (THIS SECTION 4.7F)

SECTION 7.5F LANDSCAPING OF GROUND SIGNS:
REQUIRED: SHALL REQUIRE EVG SHRUBS TO BLOCK ELECTRICAL OR MECHANICAL PANELS
PROVIDED: 10 (X.05) 24" EVG SHRUBS = .5 PUV

NOTE: MAINTAIN ALL LANDSCAPING BY KEEPING LAWNS MOWED, ALL PLANTS MAINTAINED AS DISEASE-FREE, AND PRUNED AND REPLANTING BEDS GROUNDED AND REPLACED ANY REQUIRED PLANTING WHICH IS REMOVED OR DIES AFTER THE DATE OF PLANTING. SUCH REPLACEMENT WILL OCCUR IN THE NEXT PLANTING SEASON.

ENTIRE SITE TOTAL = 26.35 PLANT UNITS PROVIDED



Chick-fil-A
5200 Buffington Road
Atlanta, Georgia 30349-2998

PEA GROUP
t: 844.813.2949
www.peagroup.com



SCALE: 1" = 20'
NOT FOR REGULATORY APPROVAL, BIDDING, OR CONSTRUCTION

CHICK-FIL-A
PLAINFIELD
6102 CAMBRIDGE WAY
PLAINFIELD, IN 46168

FSR#05219
BUILDING TYPE / SIZE: P14-SE-BASE
RELEASE: 06.25

REVISION SCHEDULE	NO.	DATE	DESCRIPTION

CONSULTANT PROJECT # 22-1054
PRINTED FOR SPA
DATE 9/15/2025
DRAWN BY CAL

Information obtained on this drawing and in all digital files produced for above named project may not be reproduced in any manner without express written or verbal consent from authorized project representatives.

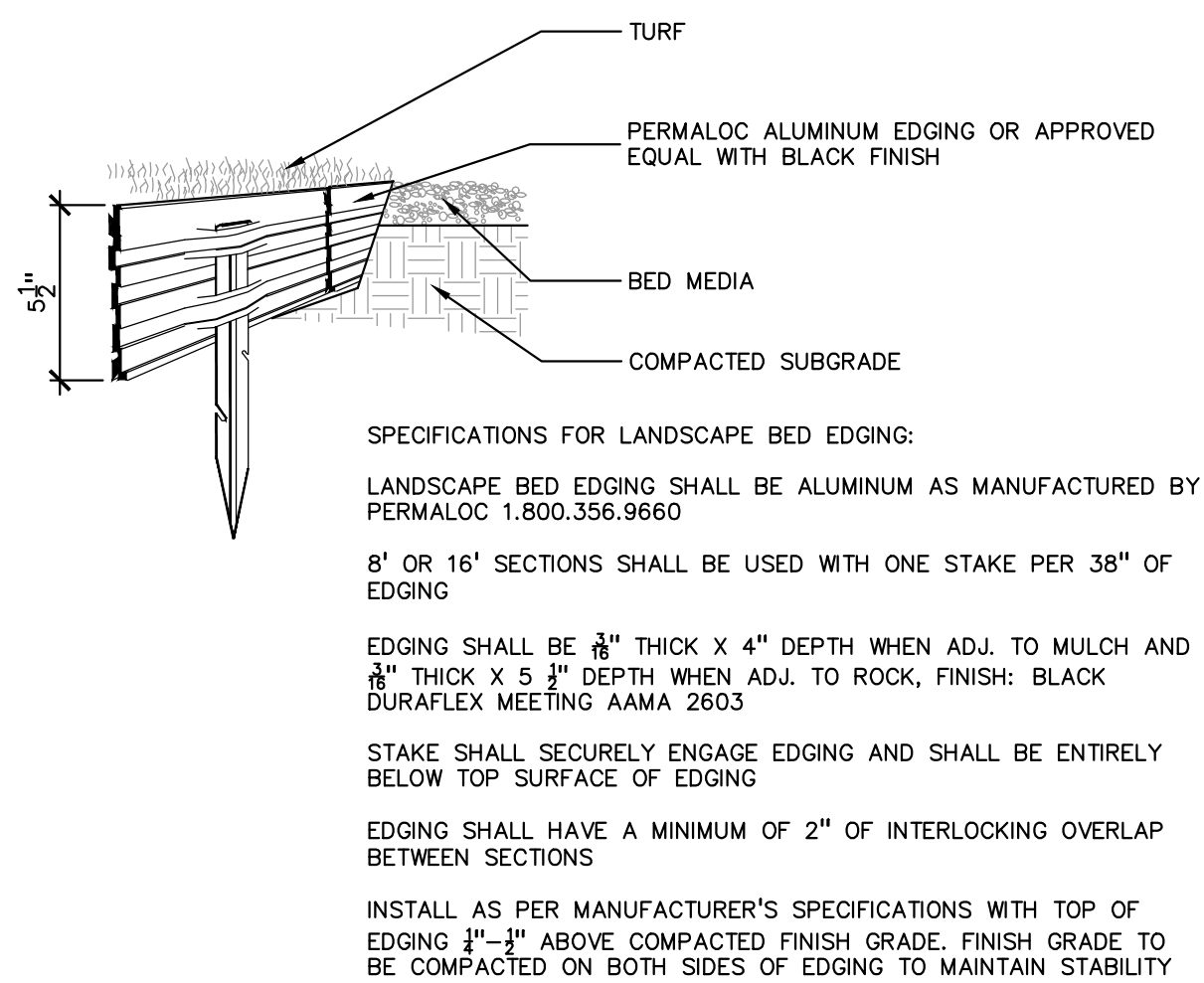
SHEET PRELIMINARY LANDSCAPE PLAN

SHEET NUMBER

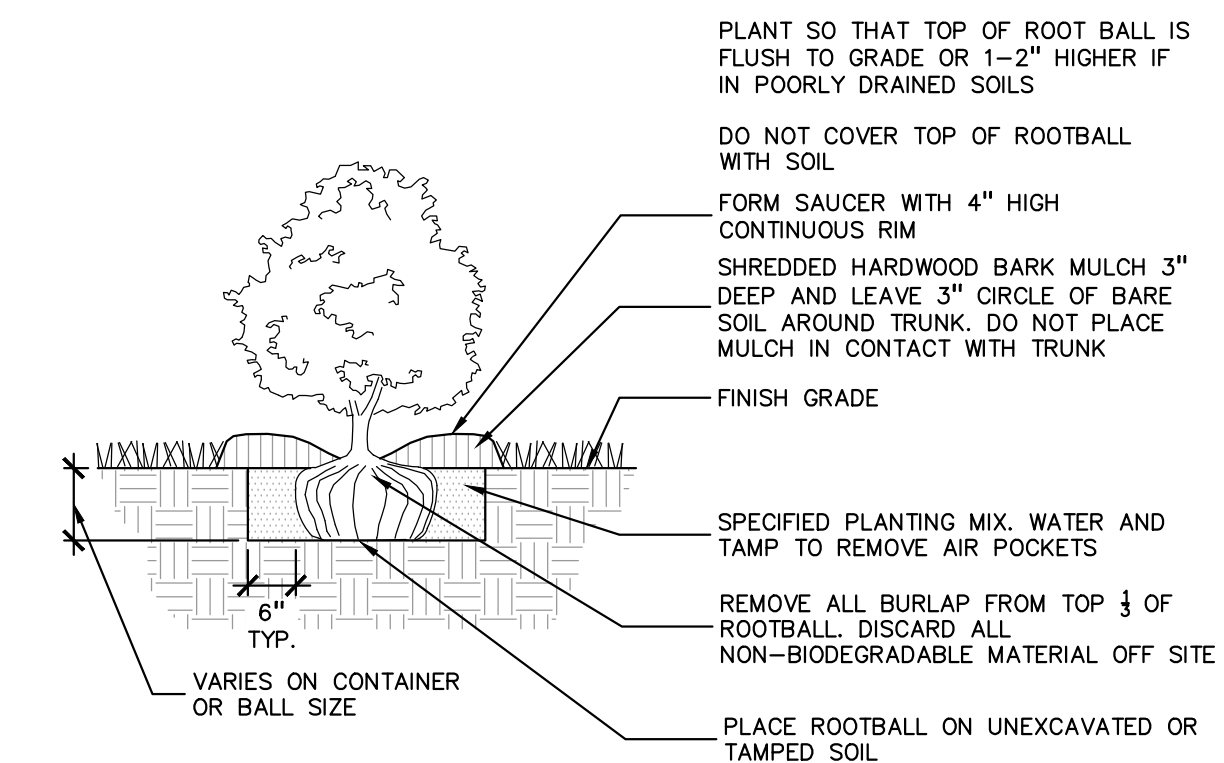
L-100

GENERAL PLANTING NOTES:

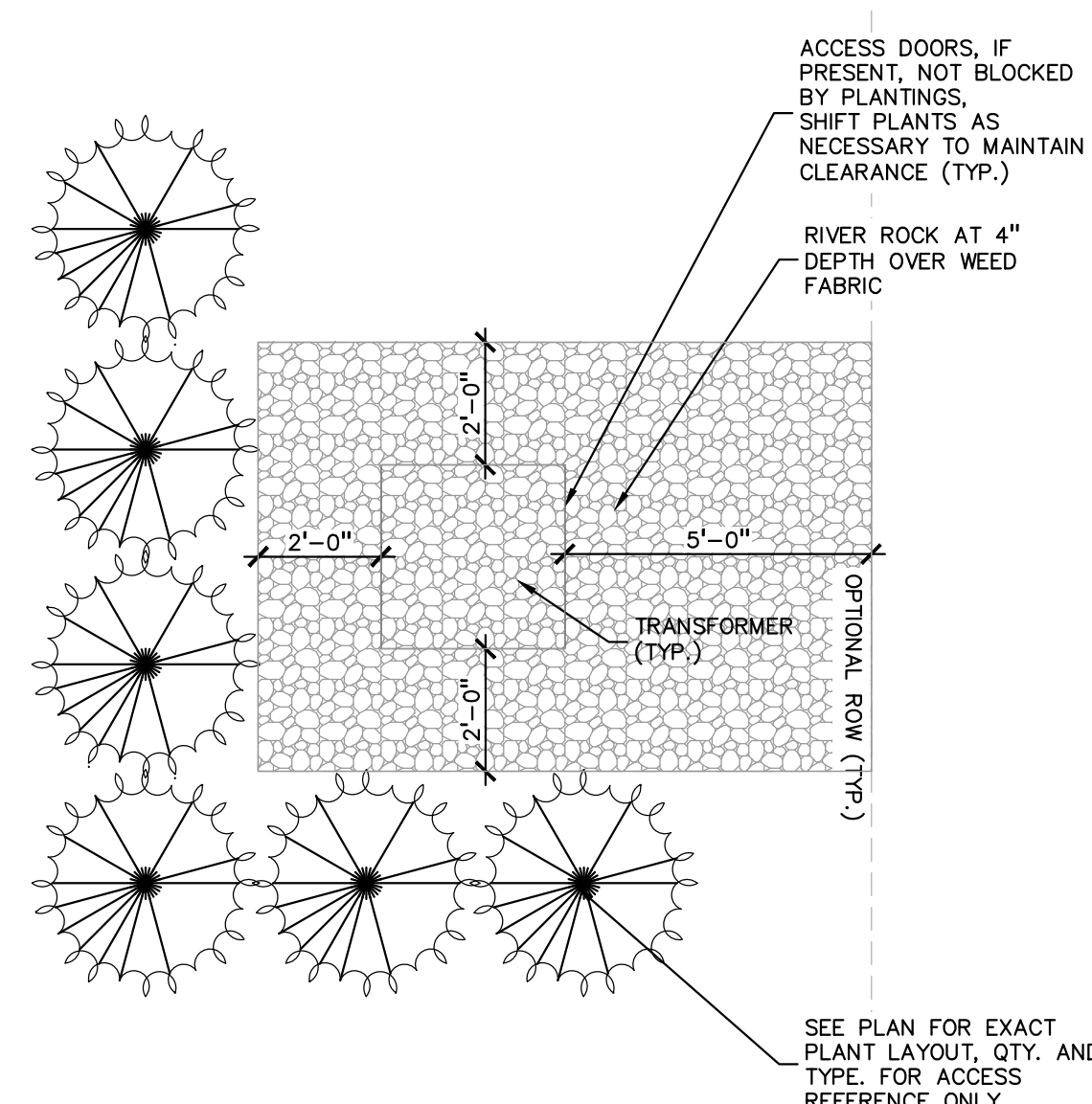
- LANDSCAPE CONTRACTOR SHALL VISIT SITE, INSPECT EXISTING SITE CONDITIONS AND REVIEW PROPOSED PLANTING AND RELATED WORK. IN CASE OF DISCREPANCY BETWEEN PLAN AND PLANT LIST, PLAN SHALL GOVERN QUANTITIES. CONTACT LANDSCAPE ARCHITECT WITH ANY CONCERNS.
- CONTRACTOR SHALL VERIFY LOCATIONS OF ALL ON SITE UTILITIES PRIOR TO BEGINNING CONSTRUCTION ON HIS/HER PHASE OF WORK. ELECTRIC, GAS, TELEPHONE, CABLE TELEVISION MAY BE LOCATED BY CALLING MISS DIG 1-800-482-7171. ANY DAMAGE OR INTERRUPTION OF SERVICES SHALL BE THE RESPONSIBILITY OF CONTRACTOR. CONTRACTOR SHALL COORDINATE ALL RELATED ACTIVITIES WITH OTHER TRADES ON THE JOB AND SHALL REPORT ANY UNACCEPTABLE JOB CONDITIONS TO OWNER'S REPRESENTATIVE PRIOR TO COMMENCING.
- ALL PLANT MATERIAL TO BE PREMIUM GRADE NURSERY STOCK AND SHALL SATISFY AMERICAN ASSOCIATION OF NURSERYMEN STANDARD FOR NURSERY STOCK. ALL LANDSCAPE MATERIAL SHALL BE NORTHERN GROWN, NO. 1. GRADE.
- CONTRACTOR IS RESPONSIBLE FOR VERIFYING ALL QUANTITIES SHOWN ON LANDSCAPE PLAN PRIOR TO PRICING THE WORK.
- THE OWNER'S REPRESENTATIVE RESERVES THE RIGHT TO REJECT ANY PLANT MATERIAL NOT MEETING SPECIFICATIONS.
- ALL SINGLE STEM SHADE TREES TO HAVE STRAIGHT TRUNKS AND SYMMETRICAL CROWNS.
- ALL SINGLE TRUNK SHADE TREES TO HAVE A CENTRAL LEADER; TREES WITH FORKED OR IRREGULAR TRUNKS WILL NOT BE ACCEPTED.
- ALL MULTI STEM TREES SHALL BE HEAVILY BRANCHED AND HAVE SYMMETRICAL CROWNS. ONE SIDED TREES OR THOSE WITH THIN OR OPEN CROWNS SHALL NOT BE ACCEPTED.
- ALL EVERGREEN TREES SHALL BE HEAVILY BRANCHED AND FULL TO THE GROUND, SYMMETRICAL IN SHAPE AND NOT SHEARED FOR THE LAST FIVE GROWING SEASONS.
- ALL TREES TO HAVE CLAY OR CLAY LOAM BALLS, TREES WITH SAND BALLS WILL BE REJECTED.
- NO MACHINERY IS TO BE USED WITHIN THE DRIP LINE OF EXISTING TREES; HAND GRADE ALL LAWN AREAS WITHIN THE DRIP LINE OF EXISTING TREES.
- ALL TREE LOCATIONS SHALL BE STAKED BY LANDSCAPE CONTRACTOR AND ARE SUBJECT TO THE APPROVAL OF THE LANDSCAPE ARCHITECT PRIOR TO INSTALLATION OF THE PLANT MATERIAL.
- IT IS MANDATORY THAT POSITIVE DRAINAGE IS PROVIDED AWAY FROM ALL BUILDINGS.
- ALL PLANTING BEDS SHALL RECEIVE 3" SHREDDED HARDWOOD BARK MULCH WITH PRE EMERGENT, SEE SPECIFICATIONS. SHREDDED PALETTE AND DYED MULCH WILL NOT BE ACCEPTED.
- ALL LANDSCAPED AREAS SHALL RECEIVE 3" COMPACTED TOPSOIL.
- SEE SPECIFICATIONS FOR ADDITIONAL COMMENTS, REQUIREMENTS, PLANTING PROCEDURES AND WARRANTY STANDARDS.
- FOR NON-LAWN SEED MIX AREAS, AS NOTED ON PLAN, BRUSH MOW ONCE SEASONALLY FOR INVASIVE SPECIES CONTROL.
- CONTRACTOR SHALL NOT INSTALL PLANTS UNDER BUILDING OVERHANG AND SHALL NOTIFY LANDSCAPE ARCHITECT IF DRAWINGS CONFLICT WITH BUILDING OVERHANGS.
- TREES SHALL NOT CONFLICT/ BLOCK PROPOSED REGULATORY/ DIRECTION SIGNAGE, MONUMENT SIGNS, ADDRESS OR LIGHT POLES. SHIFT TREES AS NECESSARY TYP.



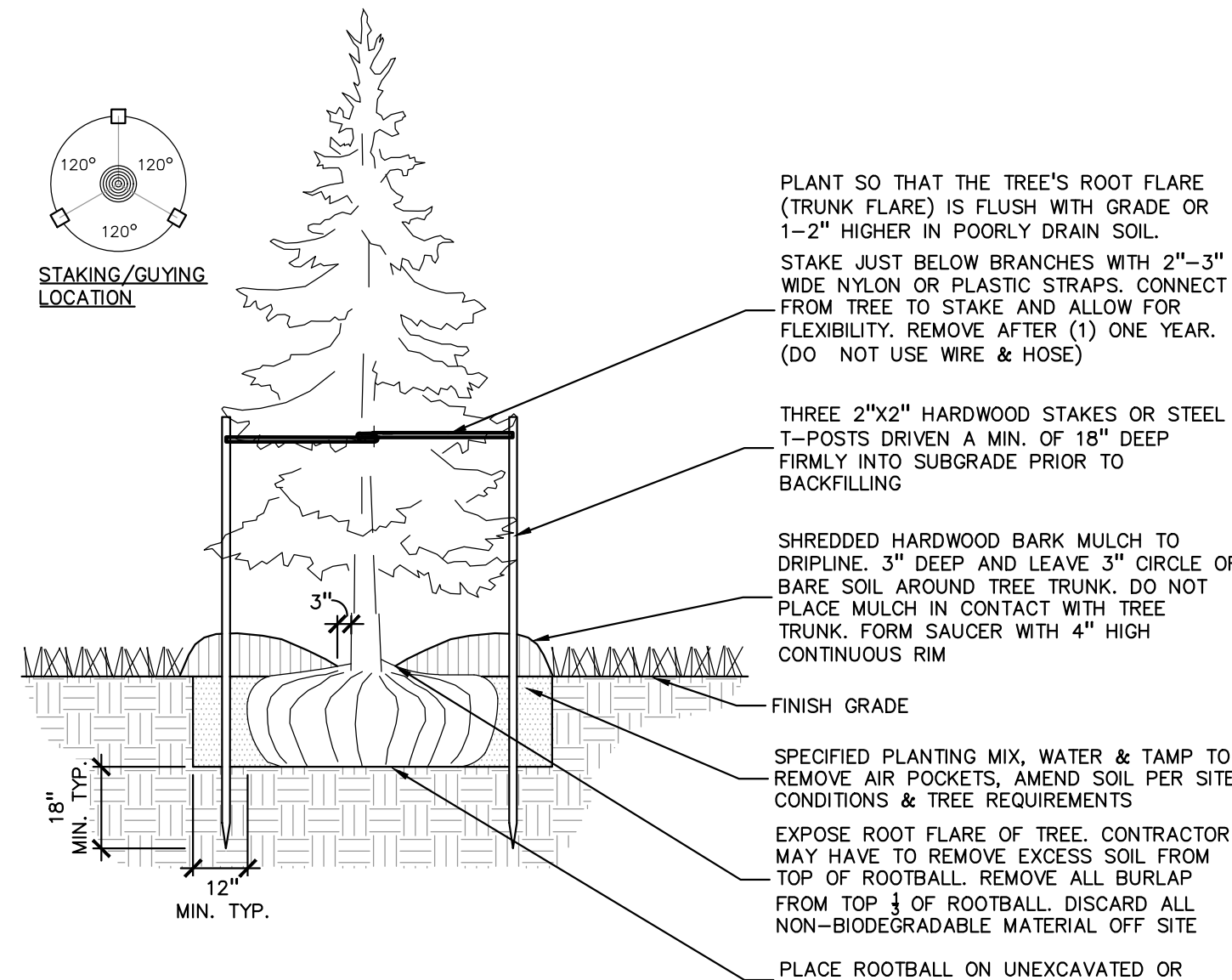
6 ALUMINUM EDGE DETAIL
SCALE: 1/2" = 1'-0"



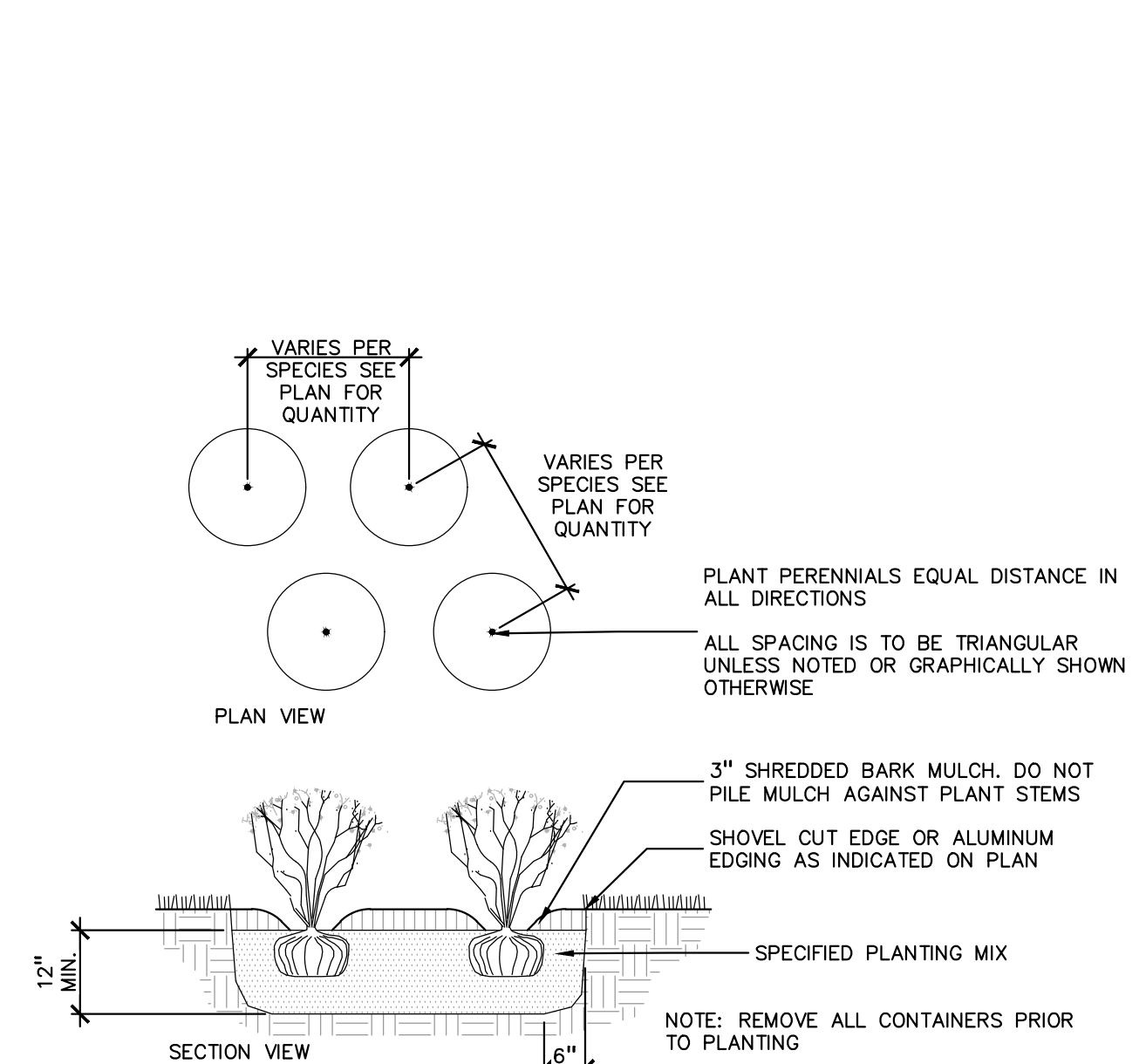
3 SHRUB PLANTING DETAIL
SCALE: 1" = 2'-0"



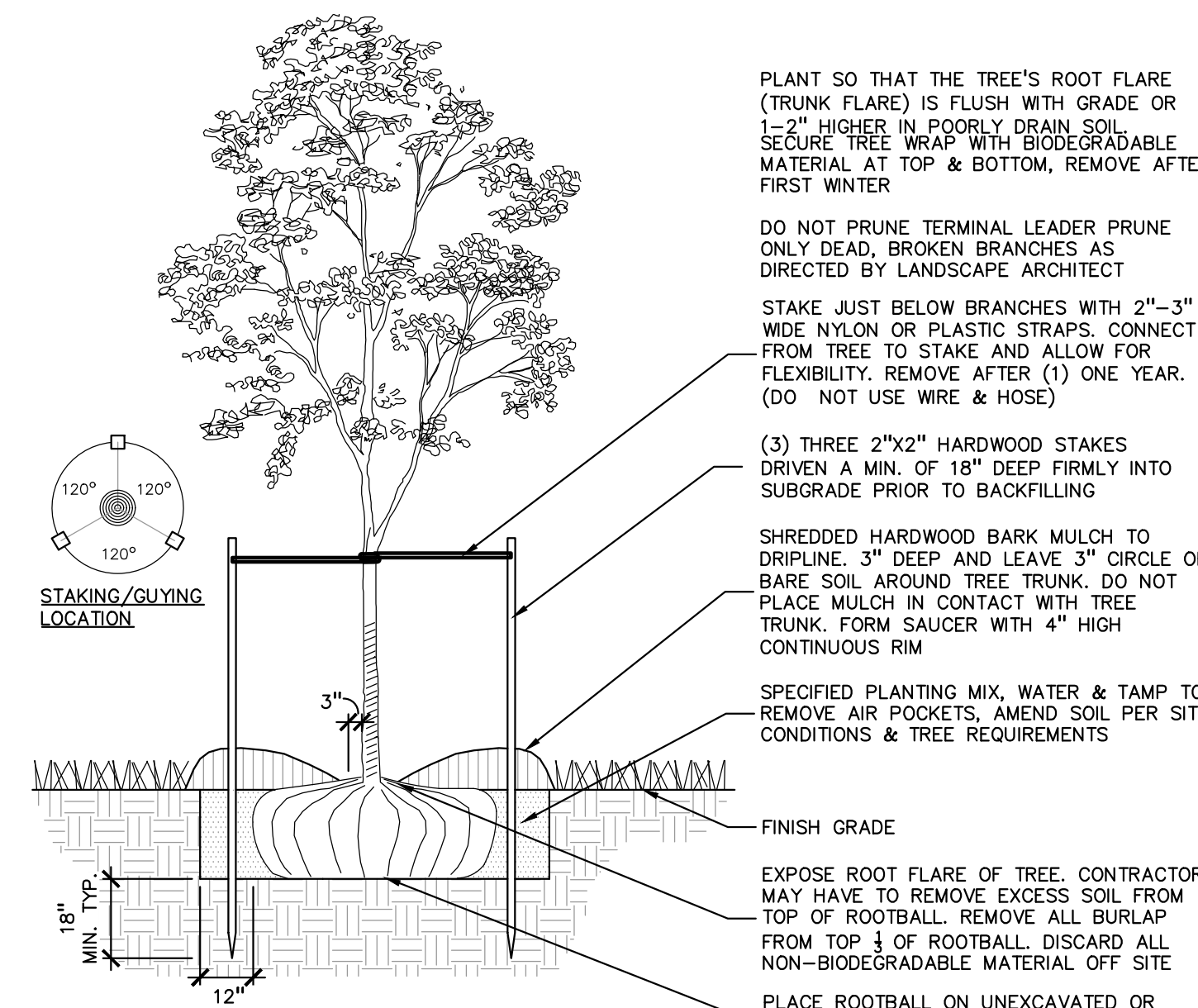
5 TRANSFORMER SCREENING DETAIL
SCALE: 1" = 3'-0"



2 EVERGREEN TREE PLANTING DETAIL
SCALE: 1" = 3'-0"



4 PERENNIAL PLANTING DETAIL
SCALE: 1" = 2'-0"



1 DECIDUOUS TREE PLANTING DETAIL
SCALE: 1" = 3'-0"

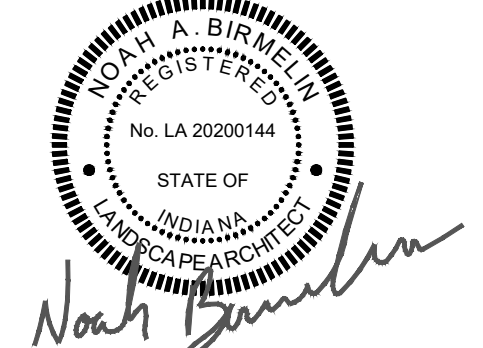


Chick-fil-A

Chick-fil-A
5200 Buffington Road
Atlanta, Georgia 30349-2998

PEA GROUP

t: 844.813.2949
www.peagroup.com



NOT FOR REGULATORY APPROVAL, BIDDING, OR CONSTRUCTION

CHICK-FIL-A
PLAINFIELD
6102 CAMBRIDGE WAY
PLAINFIELD, IN 46168

FSR#05219

BUILDING TYPE / SIZE: P14-SE-BASE
RELEASE: 06.25

REVISION SCHEDULE

NO.	DATE	DESCRIPTION

CONSULTANT PROJECT #	22-1054
PRINTED FOR	SPA
DATE	9/15/2025
DRAWN BY	CAL

Information contained on this drawing and in all digital files produced for above named project may not be reproduced in any manner without express written or verbal consent from authorized project representatives.

SHEET
LANDSCAPE DETAILS
SHEET NUMBER

L - 101



0200144