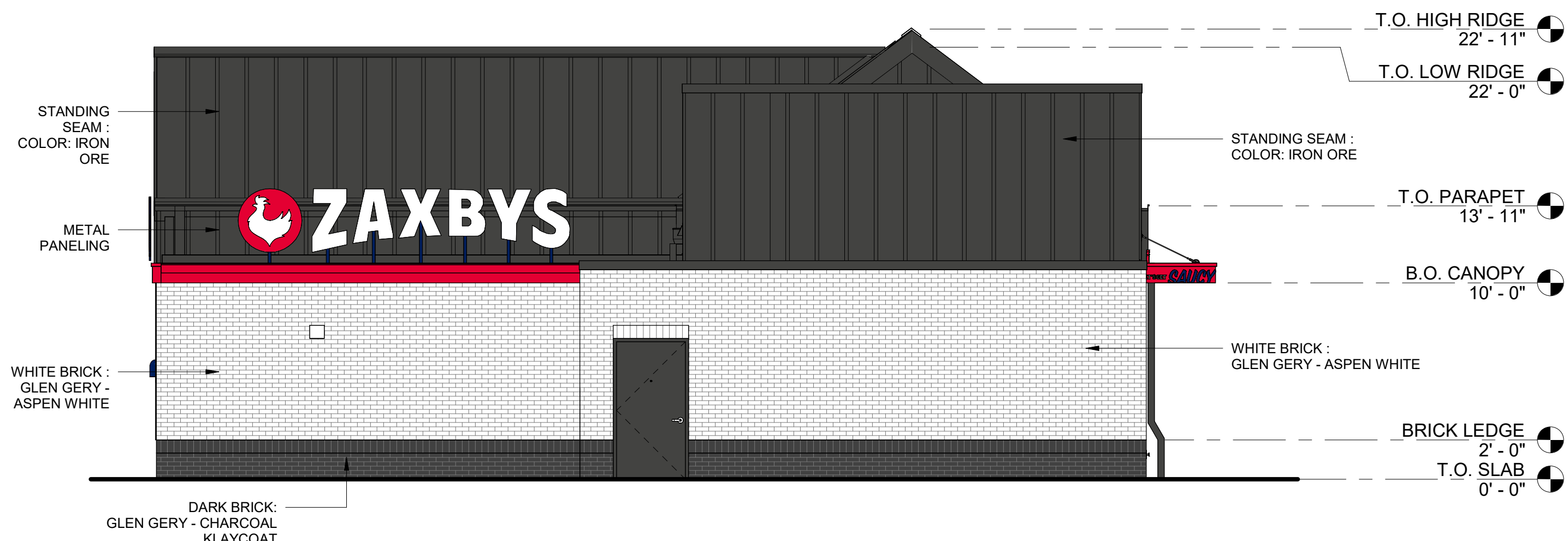
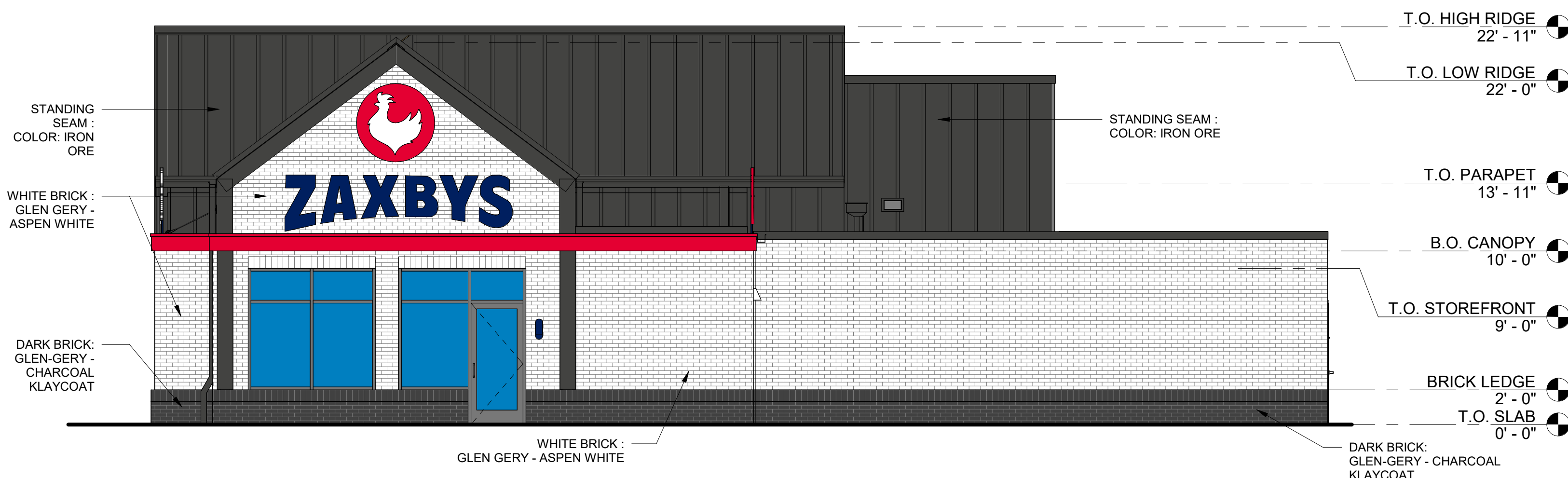


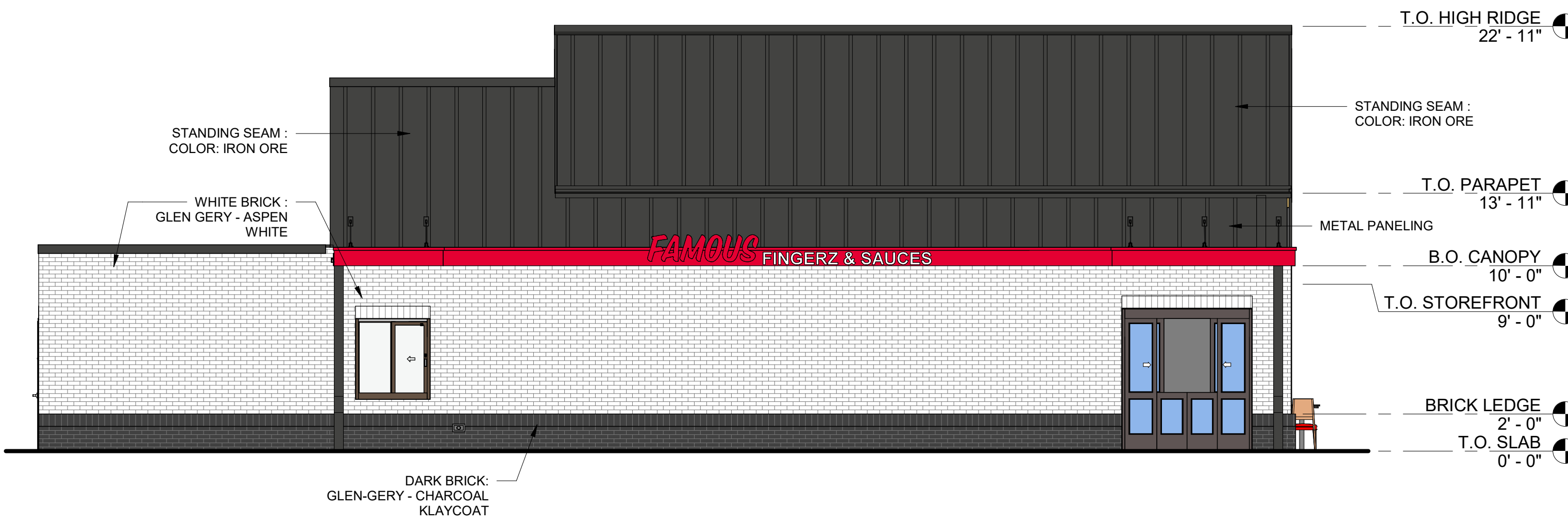
1 WEST ELEVATION



2 EAST ELEVATION



3 SOUTH ELEVATION



4 NORTH ELEVATION

WEST ELEVATION (FRONT) REQUIRED FPV: 600

816 TOTAL FACADE SQUARE FEET

MASONRY: 469.01 SF / 816 = 57.47% x 8 =	459.76 FPV
GLAZING: 157.33 SF / 816 = 19.13% x 8 =	153.04 FPV
METAL PANELING: 71.03 SF / 816 = 8.7% x 2 =	17.4 FPV
METAL ACCENTS: 119.46 / 816 = 14.64% x 0 =	14.64 FPV
TOTAL: 644.84 FPV	

EAST ELEVATION (BACK SIDE OF BUILDING) REQUIRED FPV: 600

816 TOTAL FACADE SQUARE FEET

MASONRY: 523.17 SF / 816 = 64.11% x 8 =	512.88 FPV
METAL PANELING: 260.02 SF / 816 = 31.86% x 2 =	63.72 FPV
METAL ACCENTS: 45.90 / 816 = 5.42% x 0 =	5.42 FPV
TOTAL: 582.02 FPV	

SOUTH ELEVATION (NON DRIVE THRU SIDE) REQUIRED FPV: 600

1062 TOTAL FACADE SQUARE FEET

MASONRY: 691.35 SF / 1062 = 65.09% x 8 =	520.72 FPV
GLAZING: 109.61 SF / 1062 = 10.32% x 8 =	82.56 FPV
METAL PANELING: 158.46 SF / 1062 = 14.92% x 2 =	29.84 FPV
METAL ACCENTS: 102.58 / 1062 = 9.65% x 0 =	9.65 FPV
TOTAL: 642.77 FPV	

NORTH ELEVATION (DRIVE THRU SIDE) REQUIRED FPV: 600

980 TOTAL FACADE SQUARE FEET

MASONRY: 614.03 SF / 980 = 62.65% x 8 =	501.20 FPV
GLAZING: 71.90 SF / 980 = 7.33% x 8 =	58.64 FPV
METAL PANELING: 229.18 SF / 980 = 23.38% x 2 =	46.76 FPV
METAL ACCENTS: 64.89 / 980 = 6.62% x 0 =	6.62 FPV
TOTAL: 613.22 FPV	

NOTE: REFER TO PROVIDED SIGN PACKAGE FOR SIGN CONFORMANCE. ALL SIGNAGE SHOWN IS FOR REFERENCE ONLY

PROTOTYPICAL CONSTRUCTION DOCUMENTS ARE NOT TO BE USED FOR CONSTRUCTION. THESE DOCUMENTS SHALL BE MODIFIED AS REQUIRED FOR SITE SPECIFIC DESIGN REQUIREMENTS AND DESIGN LOADS BY A REGISTERED PROFESSIONAL ENGINEER IN THE STATE THE PROJECT IS TO BE CONSTRUCTED.

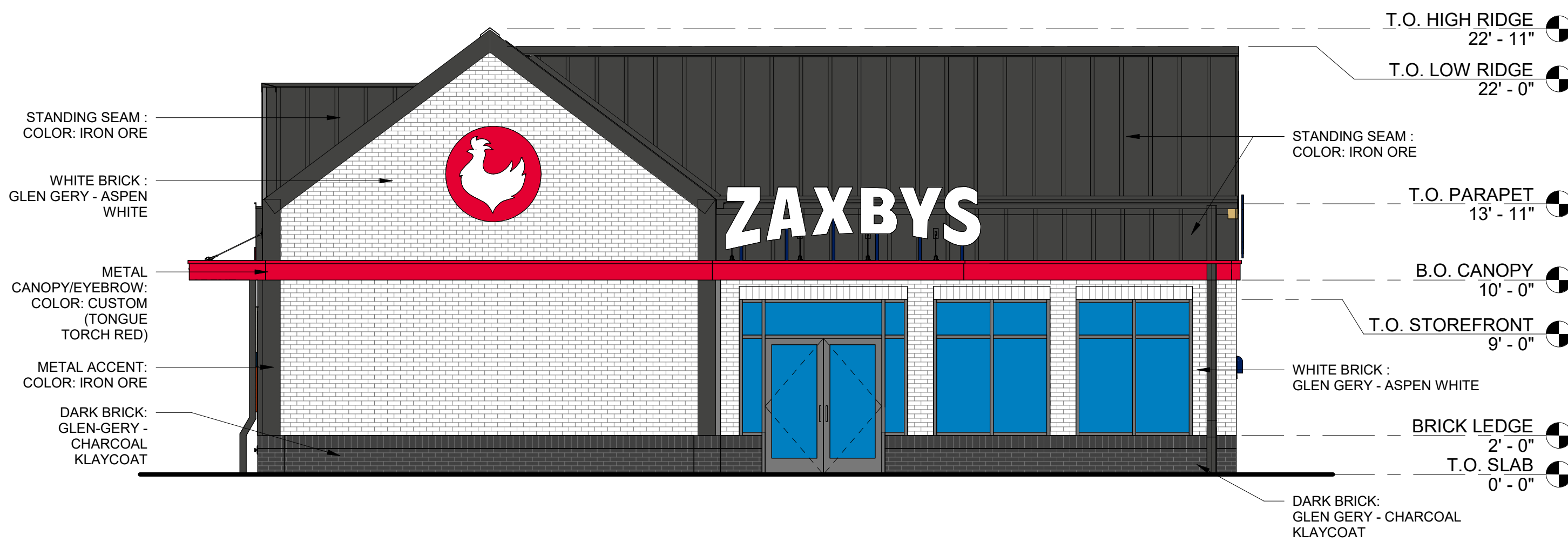
PC #:
ENTITY #:
PROJECT #: 4074.01

Zaxby's Franchising
ZAXBYS'S PROTOTYPE
2560 E MAIN STREET
PLAINFIELD, INDIANA 46168
30-SEAT WOOD



DRAWING ISSUE	REVISION DESCRIPTION	DATE
NO		

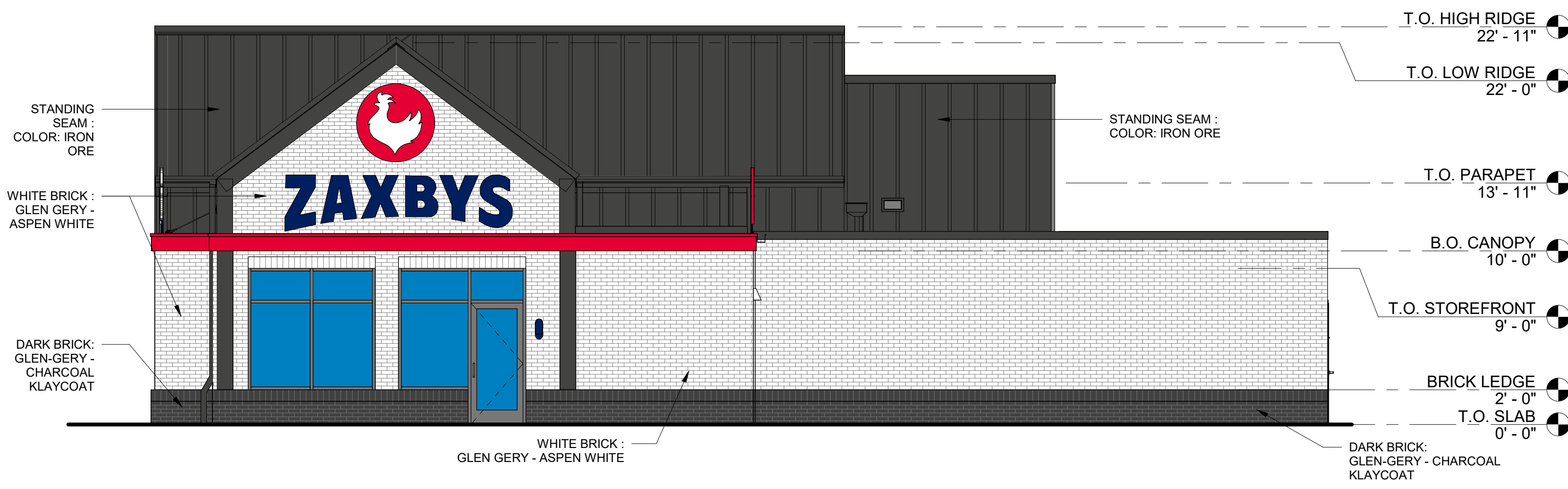
Drawing Title
EXTERIOR ELEVATIONS



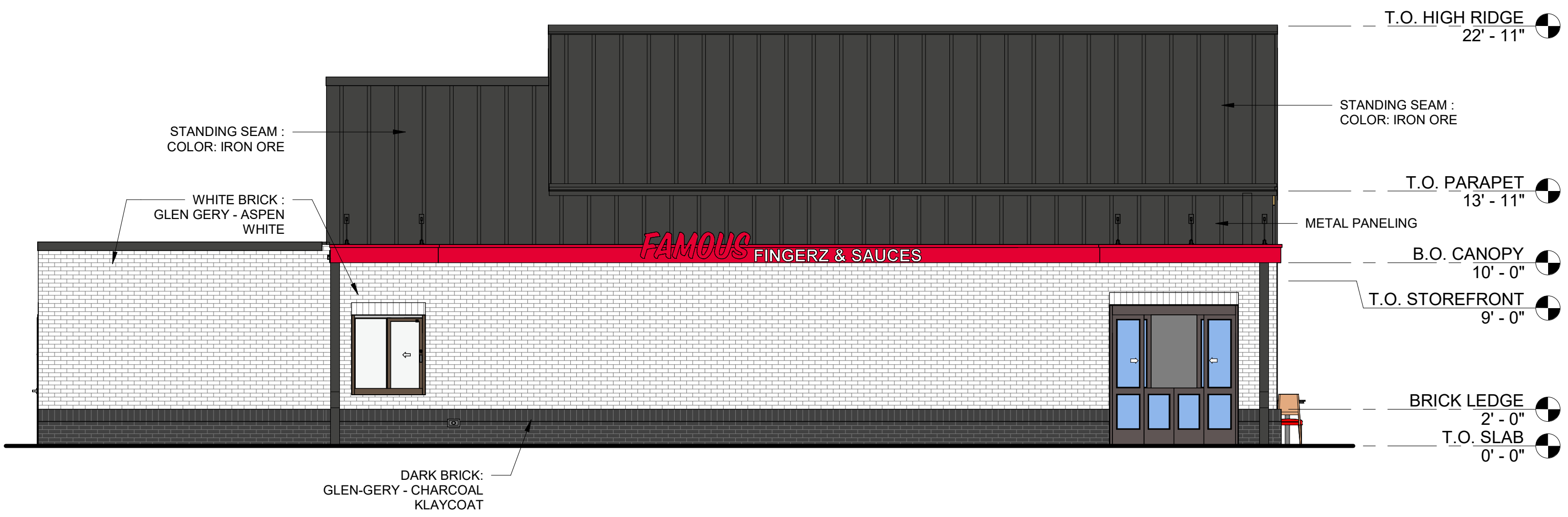
1 WEST ELEVATION



2 EAST ELEVATION



3 SOUTH ELEVATION



4 NORTH ELEVATION

PROTOTYPICAL CONSTRUCTION DOCUMENTS ARE NOT TO BE USED FOR CONSTRUCTION. THESE DOCUMENTS SHALL BE MODIFIED AS REQUIRED FOR SITE SPECIFIC DESIGN REQUIREMENTS AND DESIGN LOADS BY A REGISTERED PROFESSIONAL ENGINEER IN THE STATE THE PROJECT IS TO BE CONSTRUCTED.

PC #:
ENTITY #:
PROJECT #: 4074.01

Zaxby's Franchising
ZAXBYS PROTOTYPE
2560 E MAIN STREET
PLAINFIELD, INDIANA 46168
30-SEAT WOOD



DRAWING ISSUE	REVISION DESCRIPTION	DATE
NO		

Drawing Title
EXTERIOR ELEVATIONS