

CONTENT OF THIS DRAWING IS NOT INTENDED TO BE SUITABLE FOR USE OR REUSE BY INDIVIDUALS, COMPANIES, CORPORATIONS OR OTHER ENTITIES FOR ANY PURPOSE OTHER THAN THE INTENDED PURPOSE OF THIS DOCUMENT. WORK FOR USE ON ANY OTHER PROJECT, ANY REUSE OR REPRODUCTION WITHOUT WRITTEN VERIFICATION AND ADAPTATION BY THE ARCHITECT FOR THE SPECIFIC PURPOSE INTENDED SHALL BE AT THE USER'S SOLE RISK AND WITHOUT LIABILITY OR LEGAL EXPOSURE TO THE ARCHITECT.



1063 CENTRAL AVE,  
CINCINNATI, OH 45202  
513.241.4422  
www.ata-arch.com

AMBROSE

PLAINFIELD INNOVATION  
PARK BUILDING IV  
PLAINFIELD INDIANA

CERTIFICATION:

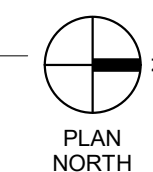
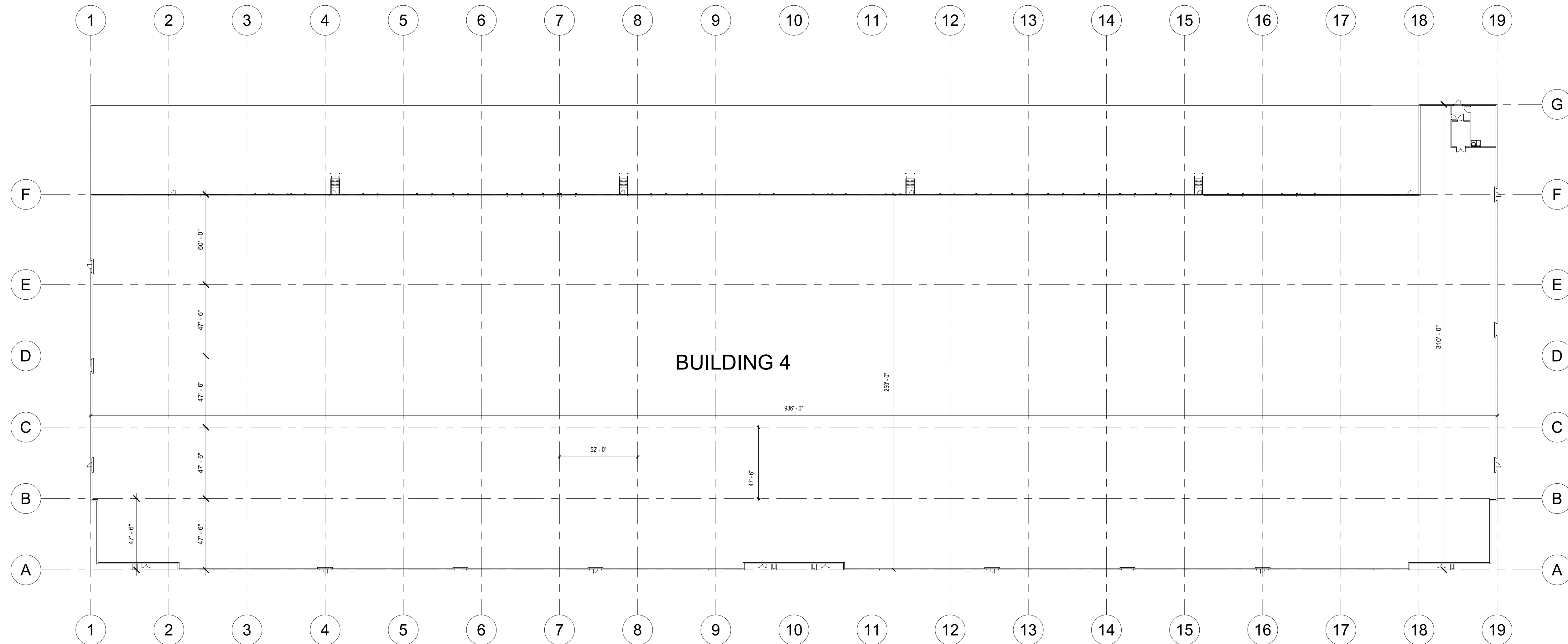
**PRELIMINARY SET  
NOT FOR  
CONSTRUCTION**

REVISIONS

#	DATE	DESCRIPTION
2025.10.23	ZONING SUBMITTAL	
2025.11.13	ZONING RESUBMITTAL	

PROJECT #: 25096 ISSUED: 2025.11.13  
DRAWN: JDS CHECKED: RNH

PROPOSED SITE  
PLAN



### LEGEND - BUILDING ELEVATIONS

- X SEE SHEET A601 FOR WINDOW ELEVATION
- T## SEE SHEET A601 FOR DOOR ELEVATION

### MATERIAL & PAINT COLOR SCHEDULE

MATERIAL INDICATOR	NOTES	PAINT MANUF.	COLOR NAME	FORMLINER EX.
	PAINTED PRECAST CONCRETE FIELD COLOR	SHERWIN WILLIAMS	SNOWFALL	NA
	PAINTED PRECAST CONCRETE ACCENT COLOR	SHERWIN WILLIAMS	MINDFUL GRAY	NA
	PAINTED PRECAST CONCRETE ACCENT COLOR	SHERWIN WILLIAMS	GAUNTLET GRAY	NA
	PAINTED PRECAST CONCRETE FIELD COLOR	SHERWIN WILLIAMS	MATCH TO LONGBOARD WOOD COLOR	NA
	PAINTED PRECAST CONCRETE PANEL W/ SPLIT FACE STONE FORMLINER	SHERWIN WILLIAMS	SNOWFALL	
	PAINTED PRECAST CONCRETE PANEL W/ SPLIT SLATE FORMLINER	SHERWIN WILLIAMS	SNOWFALL	

### GENERAL NOTES: BUILDING ELEVATIONS

1. ALL DIMENSIONS ARE TO CENTERLINE OF REVEALS INDICATED. REFER TO STRUCTURAL DRAWINGS OR ARCHITECTURAL PLANS FOR SIZES OF ROUGH OPENING OR KNOCKOUTS IN CONCRETE PANELS.
2. SEE STRUCTURAL DRAWINGS FOR ALL FOUNDATION DEPTHS, SIZES, & DETAILS.
3. SEE SHEET A602 FOR STOREFRONT & WINDOW ELEVATIONS.
4. "KNOCKOUT PANEL" INDICATES FUTURE OPENINGS SHOWN FOR CLARITY. COORDINATE ROUGH OPENING SIZE W/ DIMENSIONS SHOWN ON PLANS & SECTIONS.
5. CONCRETE FOUNDATIONS SHOWN FOR REFERENCE ONLY. SEE STRUCTURAL DRAWINGS.
6. METAL SOFFIT COLOR TO MATCH BUILDING FIELD COLOR.

### ELEVATIONS KEYNOTE LEGEND

KEY # KEYNOTE



1063 CENTRAL AVE.  
CINCINNATI, OH 45202  
513.241.4422  
www.ata-arch.com

# AMBROSE

PLAINFIELD INNOVATION  
PARK BUILDING IV  
PLAINFIELD INDIANA

CERTIFICATION:

PRELIMINARY SET  
NOT FOR  
CONSTRUCTION

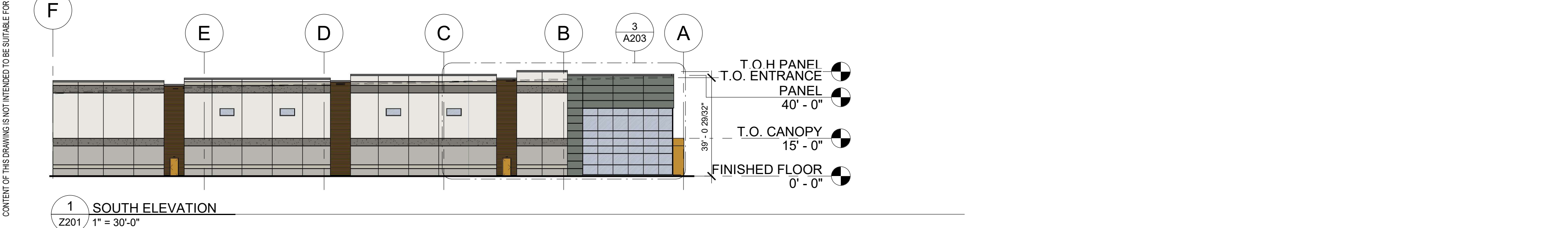
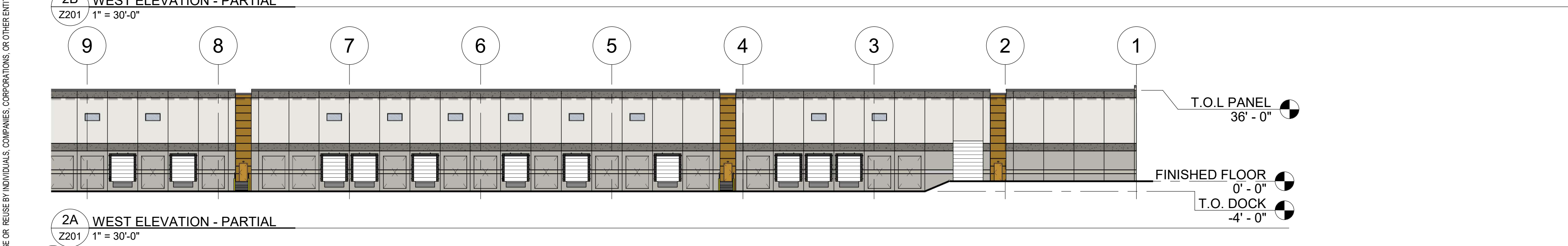
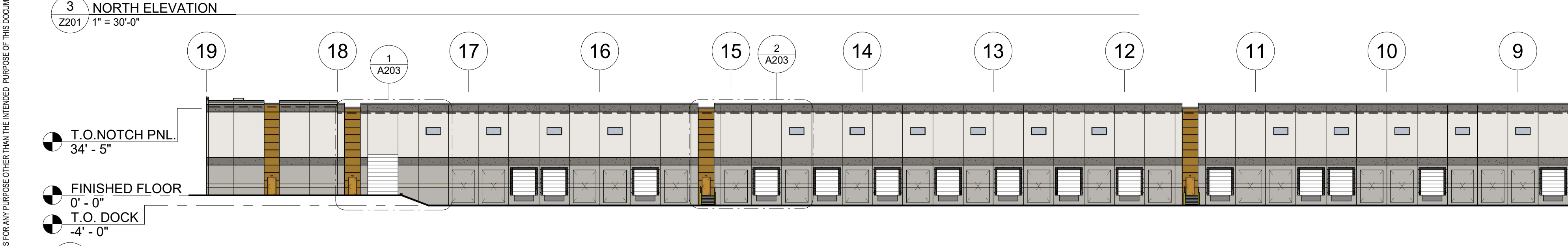
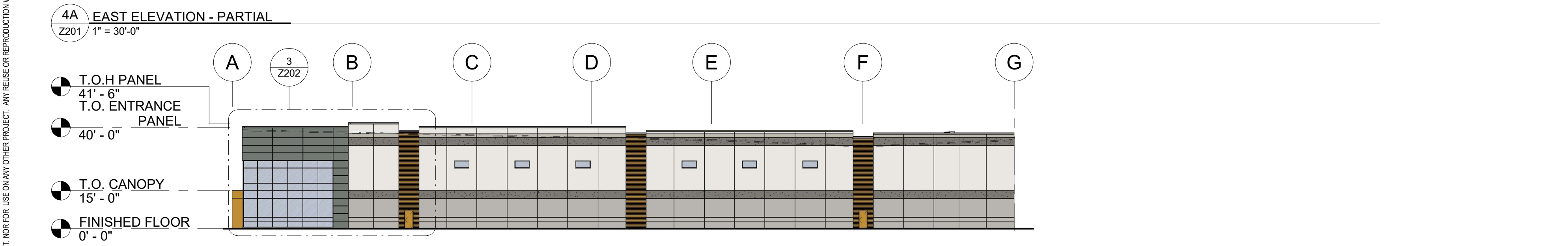
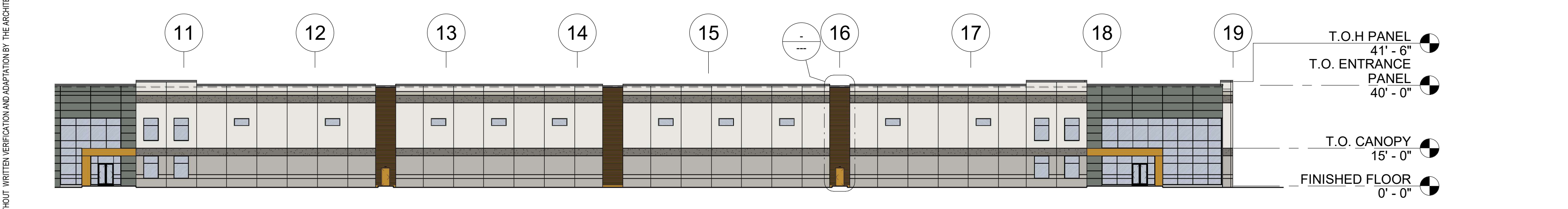
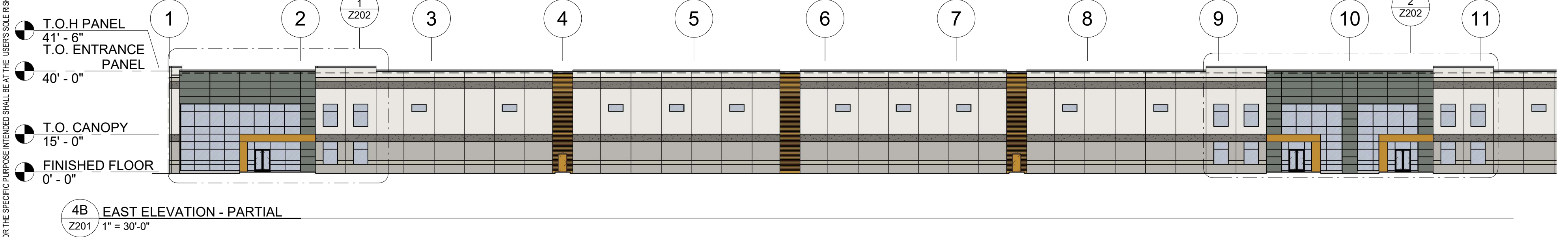
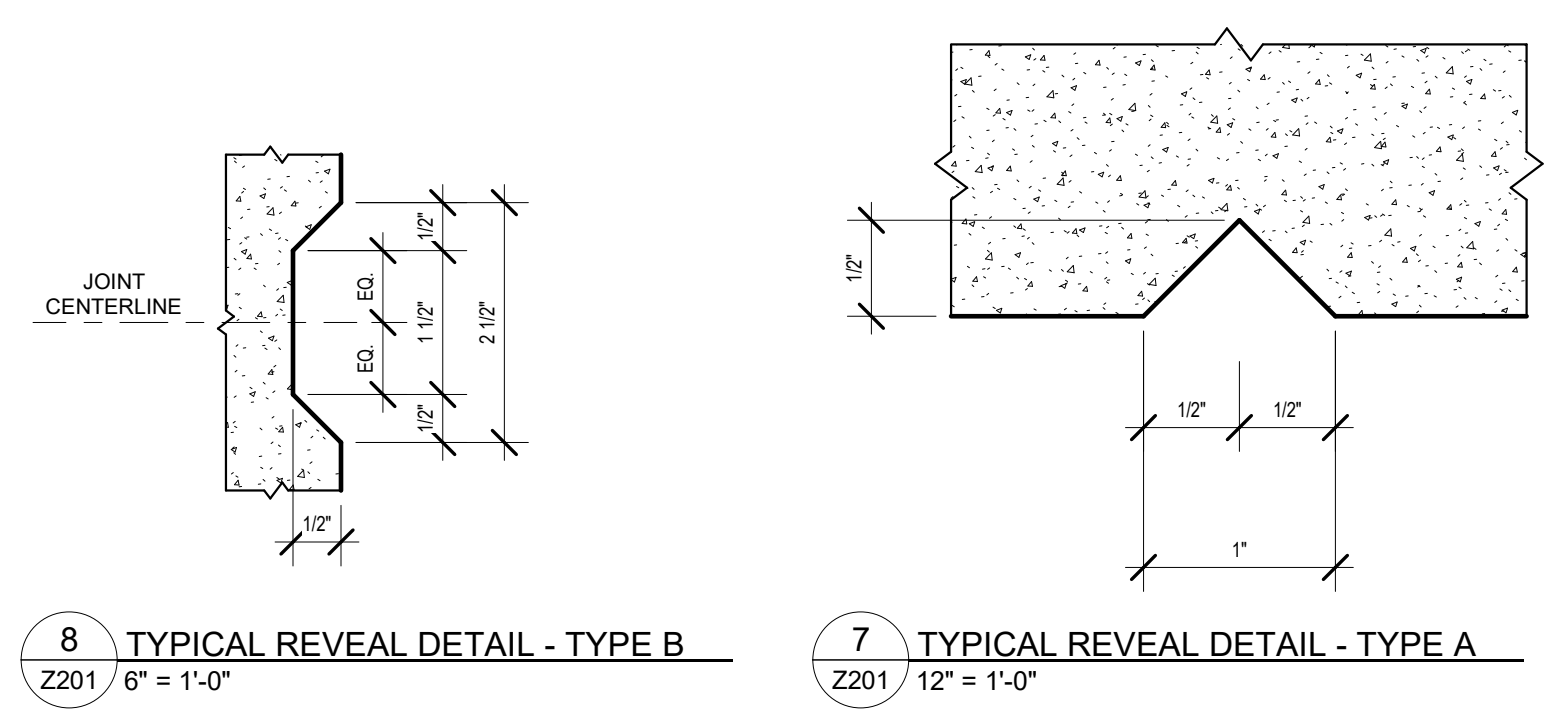
### REVISIONS

#	DATE	DESCRIPTION
2025.10.23	ZONING SUBMITTAL	
2025.11.13	ZONING RESUBMITTAL	

PROJECT #: 25096    ISSUED: 2025.11.13  
DRAWN: JDS    CHECKED: RNH

### BUILDING ELEVATIONS

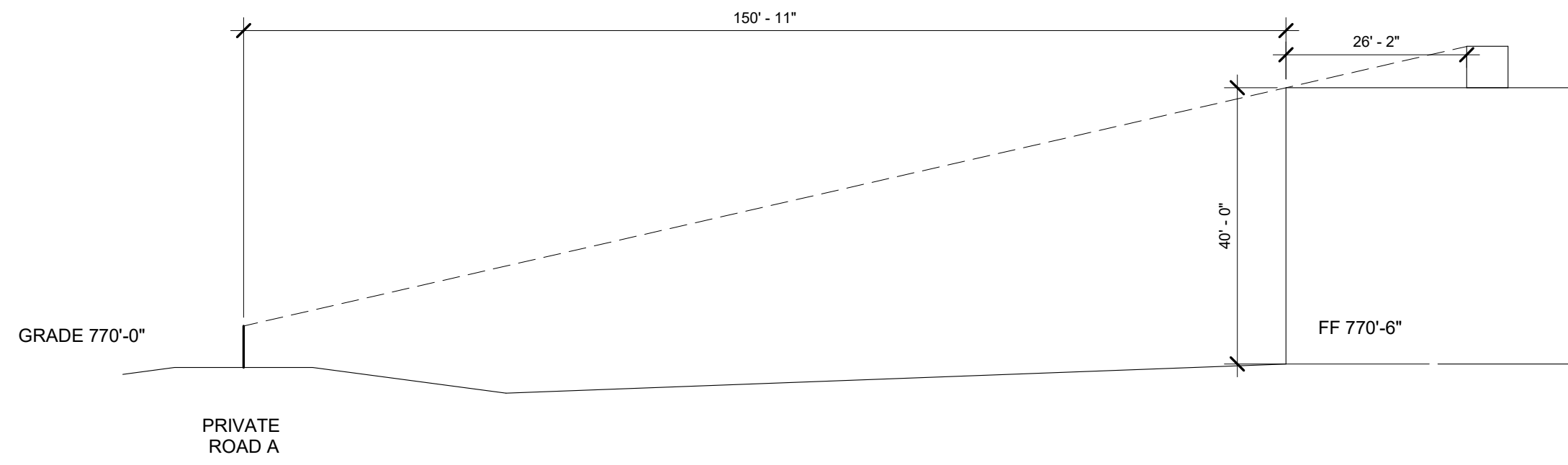
# Z201



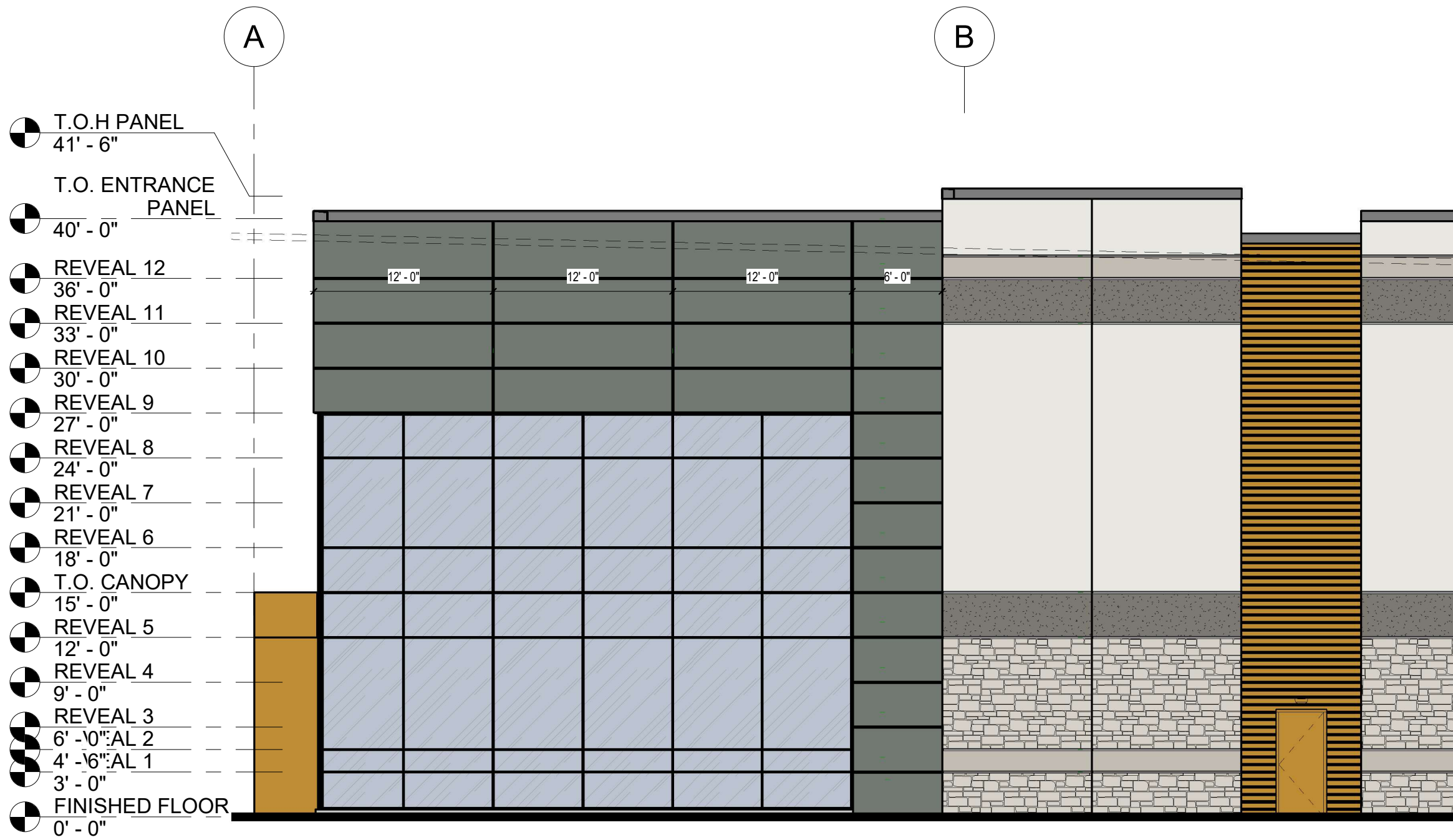
CONTENT OF THIS DRAWING IS NOT INTENDED TO BE SUITABLE FOR USE OR REUSE BY INDIVIDUALS, COMPANIES, CORPORATIONS OR OTHER ENTITIES FOR ANY PURPOSE OTHER THAN THE INTENDED PURPOSE OF THIS DOCUMENT. NOT FOR USE ON ANY OTHER PROJECT. ANY REUSE OR REPRODUCTION WITHOUT WRITTEN VERIFICATION AND ADAPTATION BY THE ARCHITECT FOR THE SPECIFIC PURPOSE INTENDED SHALL BE AT THE USER'S SOLE RISK AND WITHOUT LIABILITY OR LEGAL EXPOSURE TO THE ARCHITECT.

## AMBROSE

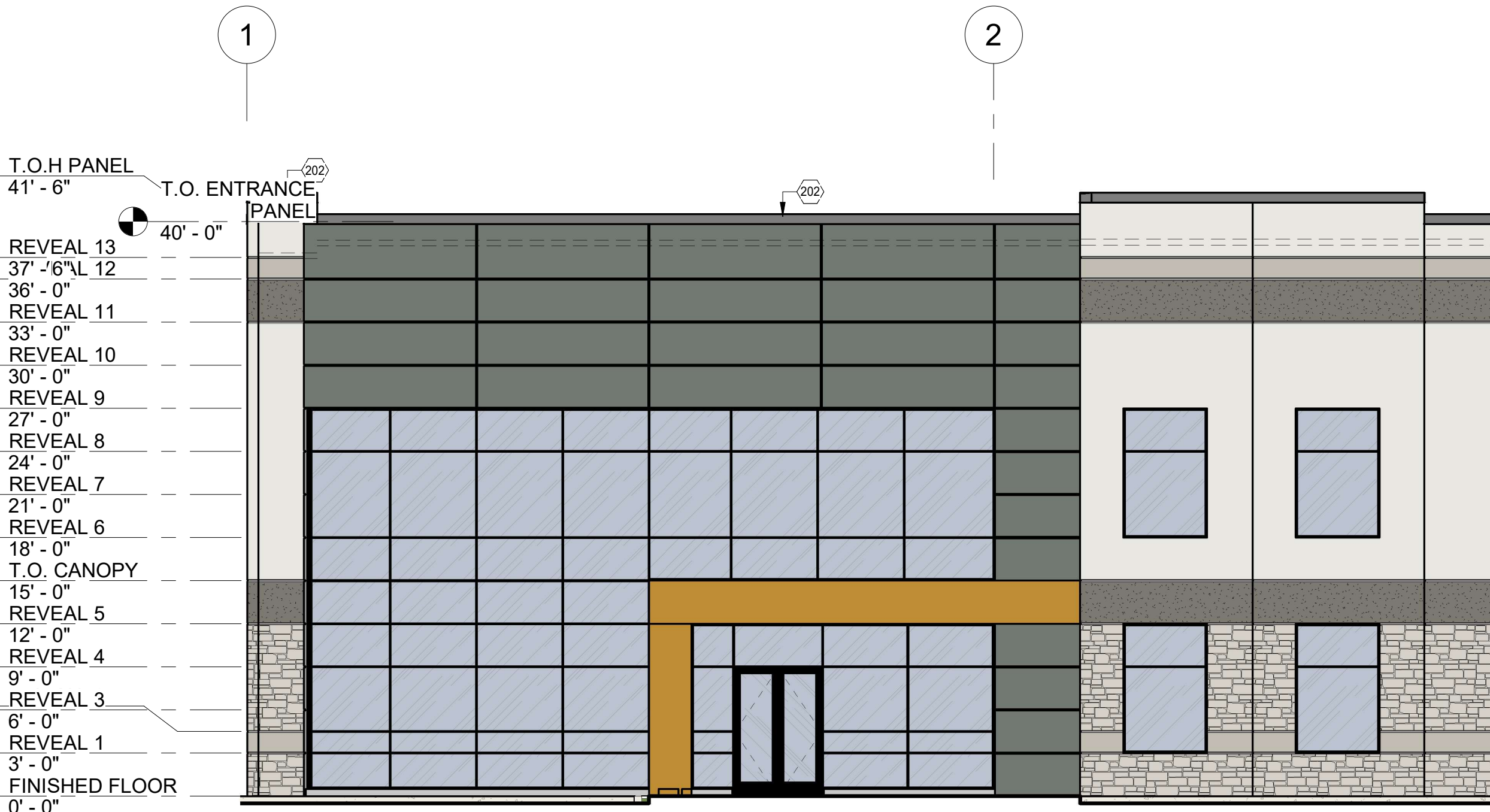
PLAINFIELD INNOVATION  
PARK BUILDING IV  
PLAINFIELD INDIANA



4 LINE OF SIGHT - PRIVATE ROAD A  
Z202 1" = 20'-0"



3 ENLARGED NORTH - CORNER  
Z202 1/8" = 1'-0"



1 ENLARGED EAST - CORNER  
Z202 1/8" = 1'-0"



2 ENLARGED EAST - CENTER  
Z202 1/8" = 1'-0"

CERTIFICATION:

**PRELIMINARY SET  
NOT FOR  
CONSTRUCTION**

REVISIONS

#	DATE	DESCRIPTION
2025.10.23	ZONING SUBMITTAL	
2025.11.13	ZONING RESUBMITTAL	

PROJECT #: 25096 ISSUED: 2025.11.13  
DRAWN: GA CHECKED: RNH

BUILDING  
ELEVATIONS

**Z202**

CONTENT OF THIS DRAWING IS NOT INTENDED TO BE USED FOR ANY OTHER PROJECT OR OTHER PURPOSES THAN THE INTENDED PURPOSE OF THIS DOCUMENT. ANY REUSE OR REPRODUCTION WITHOUT WRITTEN VERIFICATION AND ADAPTATION BY THE ARCHITECT FOR THE SPECIFIC PURPOSE INTENDED SHALL BE AT THE USER'S SOLE RISK AND WITHOUT LIABILITY OR LEGAL EXPOSURE TO THE ARCHITECT.