



SIGN PACKAGE PROPOSAL

NEW BUILD

PRESENTED TO:

Culver's
2224 Perry Rd
Plainfield, IN

DATE PREPARED:

03/25/24 - Preliminary
4/9/24 - SPT-1, Monument edit, elevations updated
4/26/24 - Permitting

ELEVATION WALL SIGNS

PLAINFIELD, IN

SL-45 & SL-30 Illuminated White Script Channel Letters

SL-SERIES

Channel letter construction

One piece (saddle capped sections)

LED internal illumination

Typical application for new construction

Embedded power supplies

UL marked product

No install pattern needed, level line scribed in back of sign



SCALE: 1/16" = 1'

*SCALE AND COLORS NOT REPRESENTATIVE FROM EMAIL ATTACHMENTS
*ALL MEASUREMENTS ARE APPROXIMATE

SIGN SQUARE FOOTAGE

MAIN ELEVATION: QTY-1 SL-30 (44.37" X 94.50") = 29.12 SF
 FRONT ELEVATION: QTY-1 SL-45 (56.00" X 120.00") = 46.67 SF
 REAR ELEVATION: QTY-1 SL-30 (44.37" X 94.50") = 29.12 SF
 DRIVE THRU ELEVATION: QTY-1 SL-30 (44.37" X 94.50") = 29.12 SF
 QTY-1 SPT-1 (14.00" X 346.75") = 33.71 SF

NOTES

LL-X LED accent strip lighting typical placements:
 MAIN: (2) places - FRONT: (3) Places - REAR: 2,
 DRIVE THRU: (2) places



DATE CREATED / REVISION HISTORY

3/25/24 - NEW			
4/9/24 - Elevations edit & SPT-1			
4/26/24 - Permitting			

SALES PERSON:
MARK WESSELL

DESIGNED BY:
J KROEGER

AO:
51060

© 2020 Springfield Sign & Graphics Inc., Springfield Sign

This drawing is Copyrighted material, it remains the property of Springfield Sign unless otherwise agreed upon in writing. It is unlawful to use this drawing for bidding purposes, nor can it be reproduced, copied or used in the production of a sign without written permission from Springfield Sign & Graphics.

This is an artistic rendition and final colors / sizes may vary from that depicted herein.



SPRINGFIELD SIGN
www.springfieldsign.com

ME-C CUSTOM MONUMENT WITH EMC

PLAINFIELD, IN

ME-C-24X96-12-RGB

ME-C

Culver's sign cabinet of aluminum construction and internally illuminated with LED's
- All aluminum construction with stucco finish

Thermoformed polycarbonate faces, embossed Culver's, 3M HP vinyl decoration

Watchfire 24x96 RGB full color 12mm Electronic Message Center (EMC) with RF wireless communication

Amber EMC option available

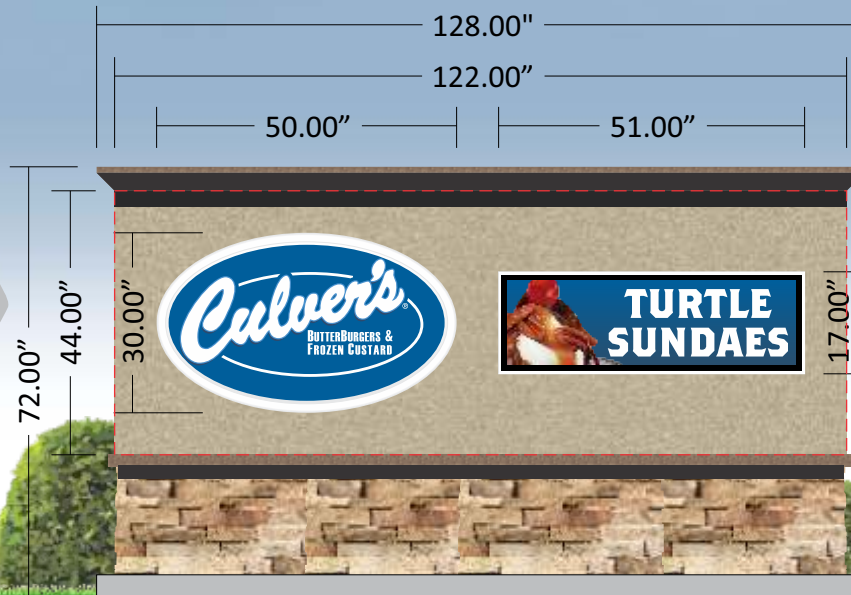
Broadband communication option available

UL marked product

1 - Watchfire signs by Time-O-Matic Inc.



NOTE:
ELECTRONIC MESSAGE CENTER (EMC) SOLD SEPARATELY



SCALE: 3/8" = 1'

*SCALE AND COLORS NOT REPRESENTATIVE FROM EMAIL ATTACHMENTS
*ALL MEASUREMENTS ARE APPROXIMATE

EMC CHART - KNOWN RESTRICTIONS

COLOR: Y N STATIC: Y N VIDEO: Y N
ANIMATION: Y N MOVEMENT: Y N

HOLD TIME (IF STATIC): ? Sec/Min _____

TRANSITION TYPE: Transition if applicable _____

DAYTIME BRIGHTNESS: Brightness if applicable _____

NIGHTTIME BRIGHTNESS: Brightness if applicable _____

ADDITIONAL RESTRICTIONS:

Additional restrictions if applicable

SIGN CODES

Max Height: 6'-0"

Max SF: 48 SF

evergreen shrubs sufficient to block any electrical panels or other mechanical panels. Landscaping may include any size or variety of annuals, perennials, ornamental grasses, Hedge Plants, or trees.

NOTES

Square Footage:

(MATH.): OVAL (8.18 SF) + EMC (6.02 SF) = 14.20 SF

(RECT.): OVAL (10.63 SF) + EMC (6.02 SF) = 16.65 SF

OVERALL: 44" X 122" = 37.27 SF

SALES PERSON:

MARK WESSELL

DESIGNED BY:

J KROEGER

A0:

51860

DATE CREATED / REVISION HISTORY

3/25/24 - NEW

4/9/24 - Monument change

4/26/24 - Permitting

© 2020 Springfield Sign & Graphics Inc., Springfield Sign

This drawing is Copyrighted material, it remains the property of Springfield Sign unless otherwise agreed upon in writing. It is unlawful to use this drawing for bidding purposes, nor can it be reproduced, copied or used in the production of a sign without written permission from Springfield Sign & Graphics.

This is an artistic rendition and final colors / sizes may vary from that depicted herein.



SPRINGFIELD SIGN
www.springfieldsign.com

AD-1 ADDRESS NUMBERS

PLAINFIELD, IN

Routed Address Numbers

AD-1

Address letters as required for building occupancy

Size & quantity may vary

Stud/adhesive mounting

1/2" thick, black XPVC

NOTE: Address to be verified with G.C. prior to mfg.



*SEE NOTE



SCALE: 1" = 6'

* Determined by physical address numbers

*SCALE AND COLORS NOT REPRESENTATIVE FROM EMAIL ATTACHMENTS
*ALL MEASUREMENTS ARE APPROXIMATE

TYPICAL INSTALLATION

*SEE NOTE



SCALE: 1/8" = 1'

NOTES

SALES PERSON: MARK WESSELL	DESIGNED BY: J KROEGER	AO: 51860
--------------------------------------	----------------------------------	---------------------

DATE CREATED / REVISION HISTORY	
3/25/24 - NEW	
4/26/24 - Permitting	

DIR DIRECTIONAL SIGNS

PLAINFIELD, IN

Illuminated Directional Signs

DIR

- All aluminum construction
- LED internal illumination
- Totally self contained lighting
- Polycarbonate thermoformed faces
- Face removal for service
- Site plans show placement & field orientation
- UL marked product

DIRECTIONAL SIGN 1
DIR-D10-D12



SIDE: A



SIDE: B

DIRECTIONAL SIGN 2
DIR-#-#

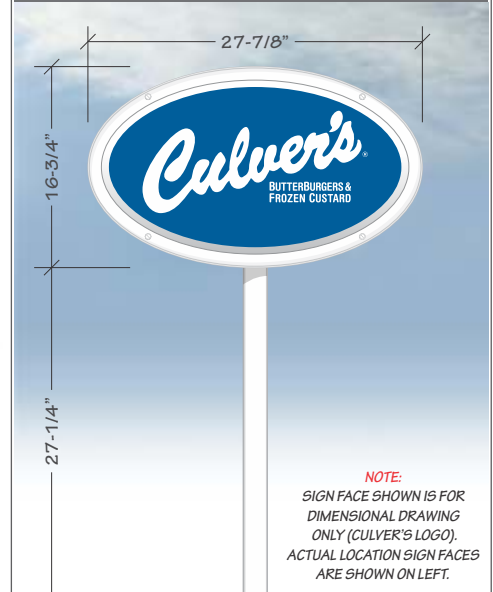
DIRECTIONAL SIGN 3
DIR-#-#



SCALE: 3/4" = 1'

*SCALE AND COLORS NOT REPRESENTATIVE FROM EMAIL ATTACHMENTS
*ALL MEASUREMENTS ARE APPROXIMATE

SIGN CONCEPTUAL



NOTES

SQUARE FOOTAGE CALCULATIONS:
MATHEMATICAL: 2.55 SF
RECTANGULAR: 3.24 SF

SALES PERSON: MARK WESSELL	DESIGNED BY: J KROEGER	AO: 51860
--------------------------------------	----------------------------------	---------------------

DATE CREATED / REVISION HISTORY	
3/25/24 - NEW	
4/26/24 - Permitting	

DTC-2 DRIVE-THRU CANOPY

PLAINFIELD, IN

Drive-Thru Canopy For Order Confirmation System (OCS)

DTC-2

All aluminum construction

Rated for 160 mph winds (3 second burst) & heavy northern states snow loads

Order Confirmation System (OCS) by others

Rear panel (door) access - lockable

Provides protection from rain for DT customer

Houses OCS, speaker &

QTY: 2

Culver's



NOTE:
DISPLAY/ELECTRONIC/
ELECTRICAL & COMMUNICATION
SERVICES BY G.C.

SCALE: 3/8" = 1'



*SCALE AND COLORS NOT REPRESENTATIVE FROM EMAIL ATTACHMENTS
*ALL MEASUREMENTS ARE APPROXIMATE

NOTES

DATE CREATED / REVISION HISTORY

3/25/24 - NEW			
4/26/24 - Permitting			

SALES PERSON: MARK WESSELL	DESIGNED BY: J KROEGER	AO: 51060
--------------------------------------	----------------------------------	---------------------

© 2020 Springfield Sign & Graphics Inc., Springfield Sign

This drawing is Copyrighted material, it remains the property of Springfield Sign unless otherwise agreed upon in writing. It is unlawful to use this drawing for bidding purposes, nor can it be reproduced, copied or used in the production of a sign without written permission from Springfield Sign & Graphics.

This is an artistic rendition and final colors / sizes may vary from that depicted herein.



 **SPRINGFIELD SIGN**
www.springfieldsign.com

MB-DT-46 EXTERIOR MENU BOARD

PLAINFIELD, IN

Blue Outdoor Drive-Thru Menu Board

MB-DT-46

Standard Menu Board for Drive-Thru Lane

LED Internal Illumination

POP Graphic panels must be purchased separately

POPP-Out magnet access panels included for easy in & out of POP panels

"-CS" option for 160mph coastal wind standards available

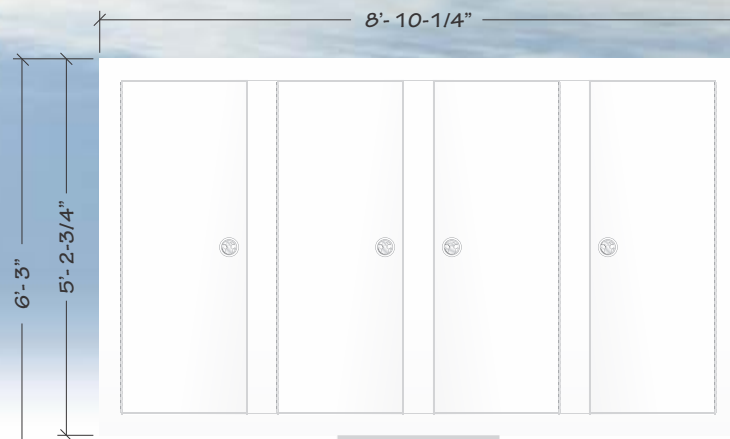
Locking rear access doors (4)

QTY: 2

FRONT



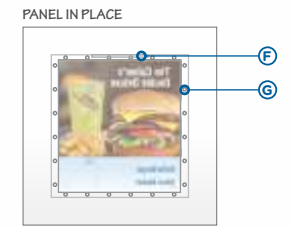
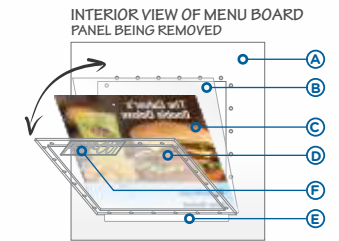
REAR



SCALE: 3/8" = 1'

*SCALE AND COLORS NOT REPRESENTATIVE FROM EMAIL ATTACHMENTS
*ALL MEASUREMENTS ARE APPROXIMATE

POPP-Out Point Of Purchase Panel System



- A - INSIDE BACK OF MENU BOARD FACE (ONLY ONE PANEL SHOWN FOR CLARITY)
- B - FRONT PANEL IS ANTI-GLARE (CLEAR) FOR INCREASED VISIBILITY
- C - POP PANEL - PRODUCT GRAPHIC
- D - REAR PANEL FITTED WITH POPP-Out PANEL
- E - SUPPORTING "TIP TRAY" FOR PANELS (SELF ALIGNING)
- F - POPP-Out TAB HANDLE
- G - PAIRED MAGNETIC "LATCH" (MAGNETS EMBEDDED IN POP-Out PANEL & BACK OF MENU BOARD)

SALES PERSON: MARK WESSELL	DESIGNED BY: J KROEGER	AO: 51860
--------------------------------------	----------------------------------	---------------------

DATE CREATED / REVISION HISTORY	
3/25/24 - NEW	
4/26/24 - Permitting	

REG-HC-1 PARKING SIGN

PLAINFIELD, IN

Handicapped Parking Post & Panel Sign

REG-HC-1

All aluminum 0.080" thick panel

U-Channel steel post (green)

Bolted connection

Local codes may require actual copy/graphics to vary

Rounded corners for safety

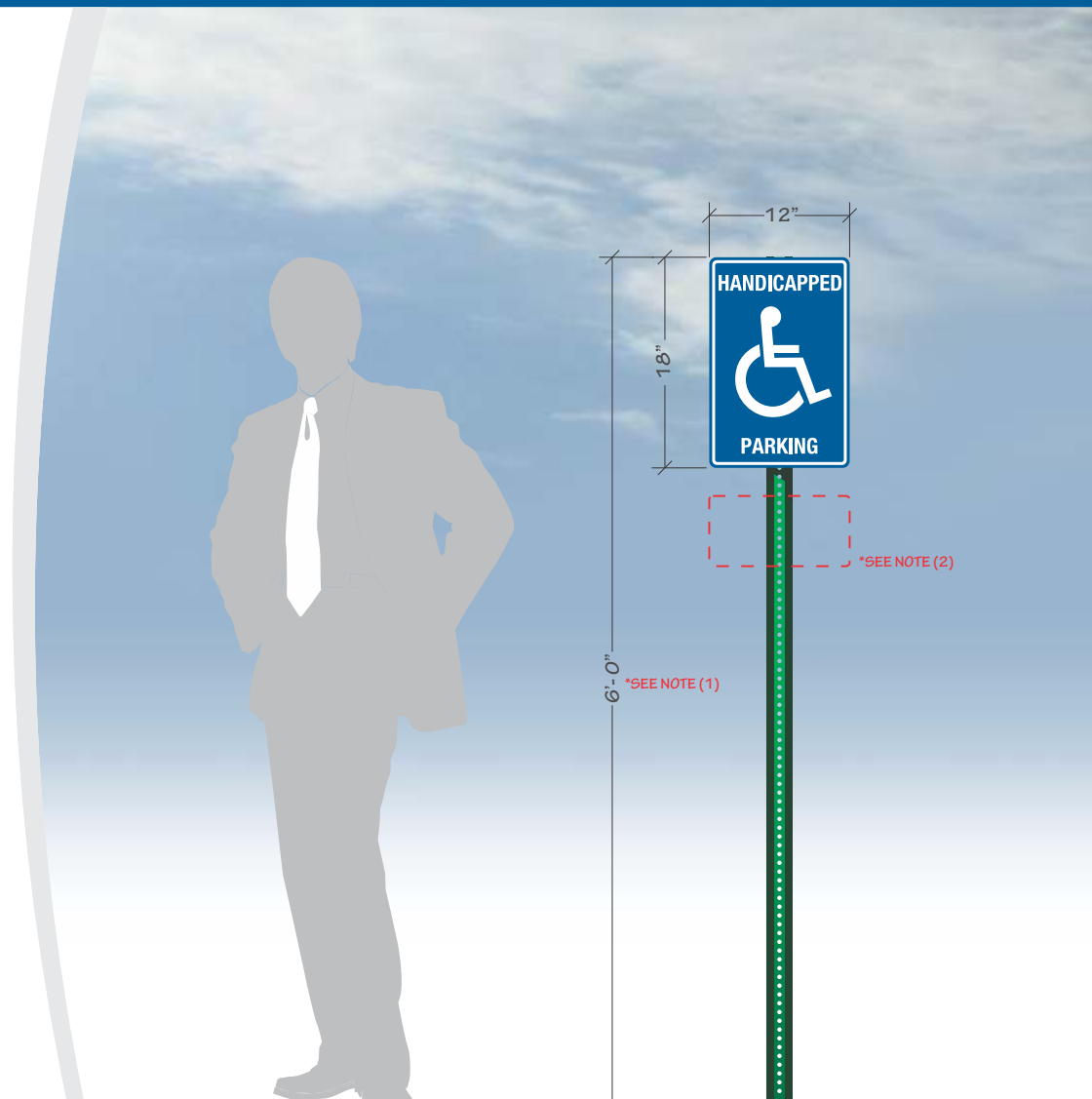
First surface vinyl (printed) copy

NOTE 1: Overall height can vary per local codes

NOTE 2: 6' x 12" sign panel may also be required



SCALE: 3/4" = 1'



*SCALE AND COLORS NOT REPRESENTATIVE FROM EMAIL ATTACHMENTS
*ALL MEASUREMENTS ARE APPROXIMATE

ADDITIONAL PARKING SIGN PANELS

STANDARD FACE OPTIONS:



ADDITIONAL FACE OPTIONS:



SCALE: 1/2" = 1'

SALES PERSON: MARK WESSELL	DESIGNED BY: J KROEGER	AO: 51860
--------------------------------------	----------------------------------	---------------------

DATE CREATED / REVISION HISTORY	
3/25/24 - NEW	
4/26/24 - Permitting	

V-1, V-5, V-6 DOOR & WINDOW VINYL

PLAINFIELD, IN

Entry Door & Drive-Thru Vinyl Lettering

V-1-1
V-5-1
V-6

3M¹ HP white vinyl substrate

UV digitally printed image (blue)

Satin gloss over laminate

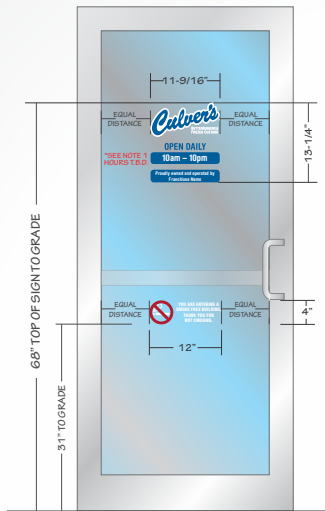
Contour cut

First surface application

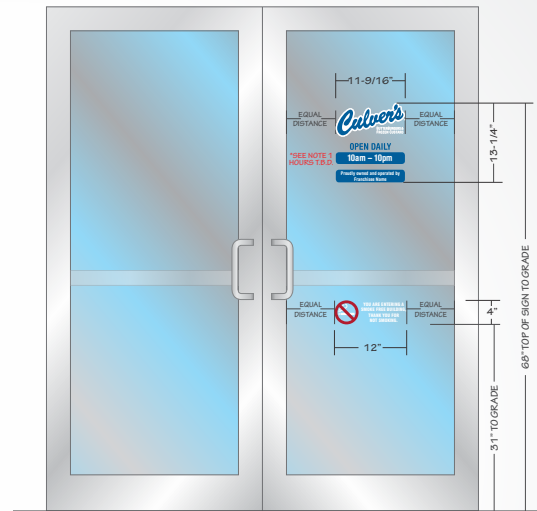
NOTE 1: Business hours shown are typical. However, each location may be different than shown.

1 - 3M is a registered trademark of Minnesota Mining & Manufacturing

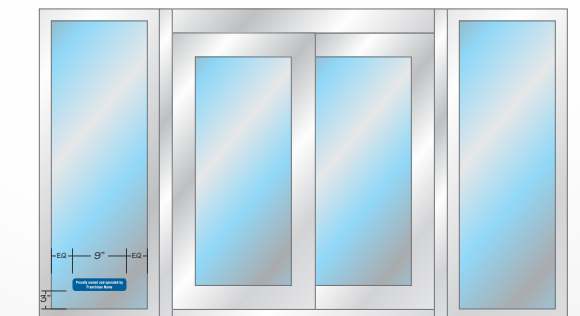
V-1-1 & V-6
TYPICAL SINGLE DOOR LAYOUT



V-1-1 & V-6
TYPICAL DOUBLE DOOR LAYOUT



V-5-1
TYPICAL DRIVE-THRU LAYOUT

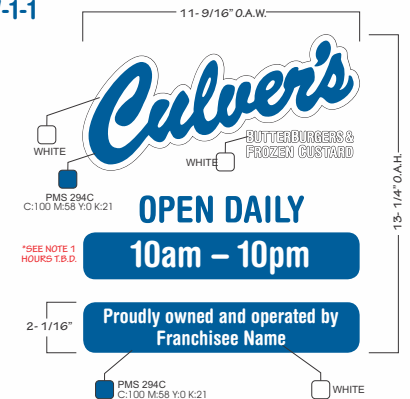


SCALE: 3/8" = 1'

*SCALE AND COLORS NOT REPRESENTATIVE FROM EMAIL ATTACHMENTS
*ALL MEASUREMENTS ARE APPROXIMATE

SIGN SPECIFICATIONS

V-1-1



SCALE: 1-1/2" = 1'

V-6



SCALE: 1-1/2" = 1'

V-5-1



SCALE: 1-1/2" = 1'

SALES PERSON: MARK WESSELL	DESIGNED BY: J KROEGER	AO: 51860
-------------------------------	---------------------------	--------------

DATE CREATED / REVISION HISTORY	
3/25/24 - NEW	
4/26/24 - Permitting	



© 2020 Springfield Sign & Graphics Inc., Springfield Sign

This drawing is Copyrighted material, it remains the property of Springfield Sign unless otherwise agreed upon in writing. It is unlawful to use this drawing for bidding purposes, nor can it be reproduced, copied or used in the production of a sign without written permission from Springfield Sign & Graphics.

This is an artistic rendition and final colors / sizes may vary from that depicted herein.



VHD-1 VEHICLE HEIGHT DETECTOR

PLAINFIELD, IN

Vehicle Height Detector for Drive-Thru Lane

VHD-1

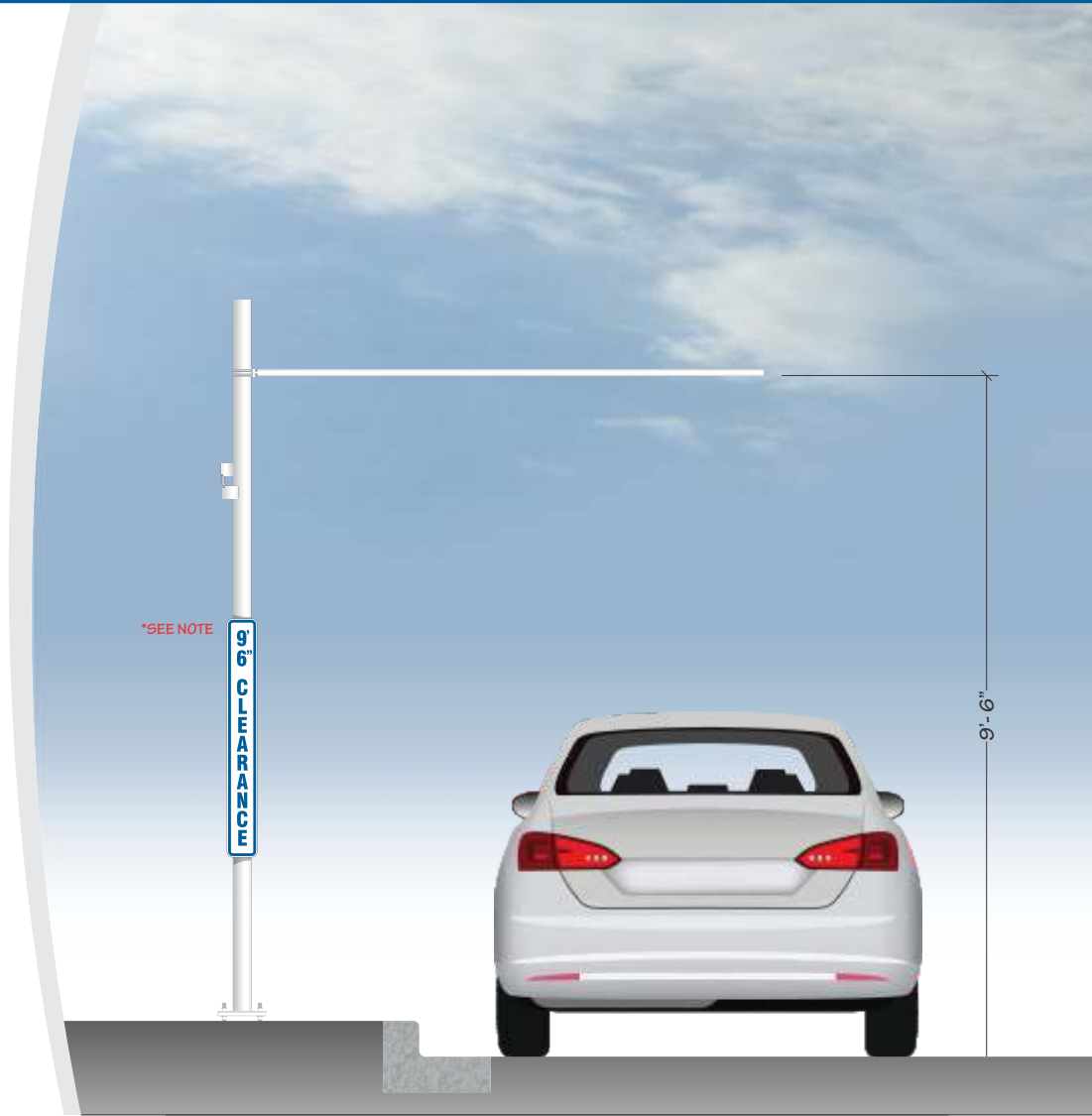
All steel (painted) construction

Re-settable if engaged

Used to help protect canopies from advancing vehicles that are too tall

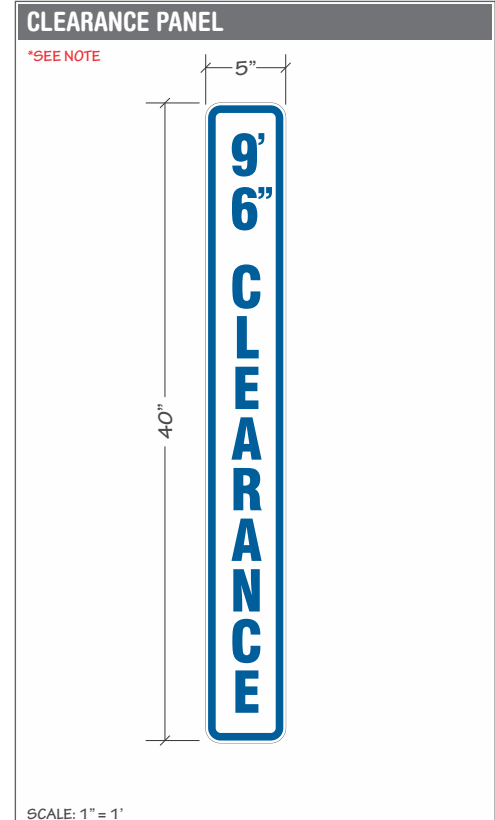
NOTE: Clearance height must be verified prior to mfg.

QTY: 2



SCALE: 1/2" = 1'

*SCALE AND COLORS NOT REPRESENTATIVE FROM EMAIL ATTACHMENTS
*ALL MEASUREMENTS ARE APPROXIMATE



SCALE: 1" = 1'

SALES PERSON: MARK WESSELL	DESIGNED BY: J KROEGER	A0: 51860
--------------------------------------	----------------------------------	---------------------

DATE CREATED / REVISION HISTORY	
3/25/24 - NEW	
4/26/24 - Permitting	

SPT-1 SLIM PUSH-THRU CABINET SIGN

PLAINFIELD, IN

Exterior Illuminated Push-Thru Cabinet Sign

SPT-1

All Aluminum construction.

Single face LED internally illuminated White acrylic Push-Thru cabinet.

3" (depth) Cabinet to be painted Culver's Blue.

Flush mounted to face of awning.

NOTE: Sizing to be verified prior to production.



SCALE: 1/4" = 1'



*SCALE AND COLORS NOT REPRESENTATIVE FROM EMAIL ATTACHMENTS
*ALL MEASUREMENTS ARE APPROXIMATE

NOTES

Sizing is approximate, based on elevation drawings. Subject to change upon further review

DATE CREATED / REVISION HISTORY

4/9/24 - NEW			
4/26/24 - Permitting			

SALES PERSON: MARK WESSELL	DESIGNED BY: J KROEGER	AO: 51060
--------------------------------------	----------------------------------	---------------------

© 2020 Springfield Sign & Graphics Inc., Springfield Sign

This drawing is Copyrighted material, it remains the property of Springfield Sign unless otherwise agreed upon in writing. It is unlawful to use this drawing for bidding purposes, nor can it be reproduced, copied or used in the production of a sign without written permission from Springfield Sign & Graphics.

This is an artistic rendition and final colors / sizes may vary from that depicted herein.



SPT-1 SLIM PUSH-THRU CABINET SIGN

Exterior Illuminated Push-Thru Cabinet Sign - Attachment View

SPT-1

All Aluminum construction.

Single face LED internally illuminated White acrylic Push-Thru cabinet.

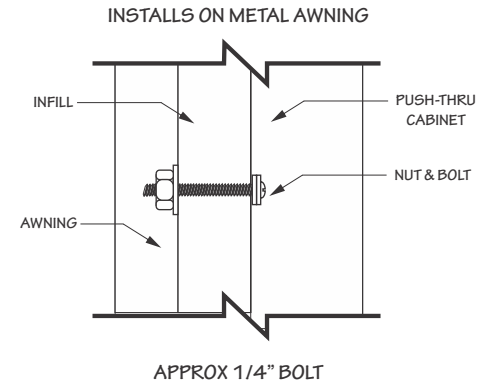
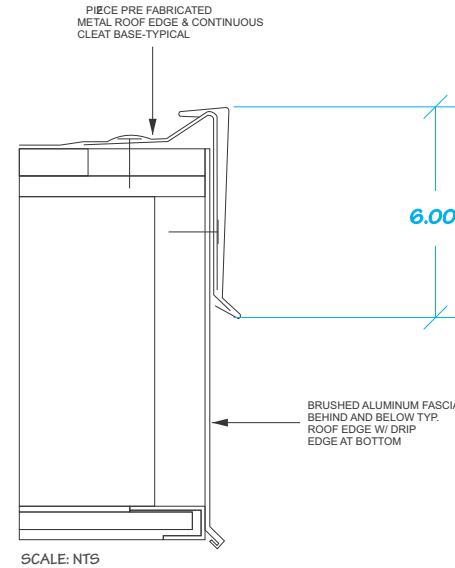
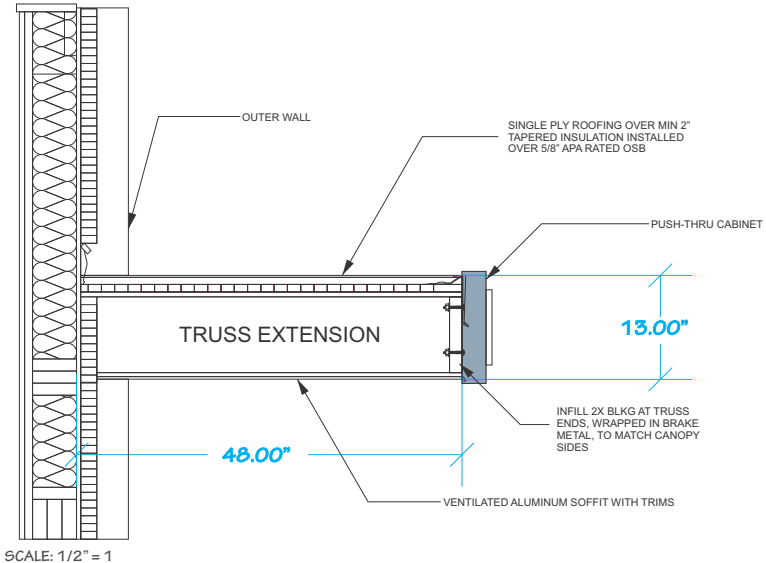
3" (depth) Cabinet to be painted Culver's Blue.

Flush mounted to face of awning.

NOTE: Sizing to be verified prior to production.

BUTTERBURGERS & FROZEN CUSTARD

SCALE: 1/4" = 1



SCALE: VARIOUS

*SCALE AND COLORS NOT REPRESENTATIVE FROM EMAIL ATTACHMENTS
*ALL MEASUREMENTS ARE APPROXIMATE

NOTES

Sizing is approximate, based on elevation drawings. Subject to change upon further review

DATE CREATED / REVISION HISTORY

4/9/24 - NEW			
4/26/24 - Permitting			

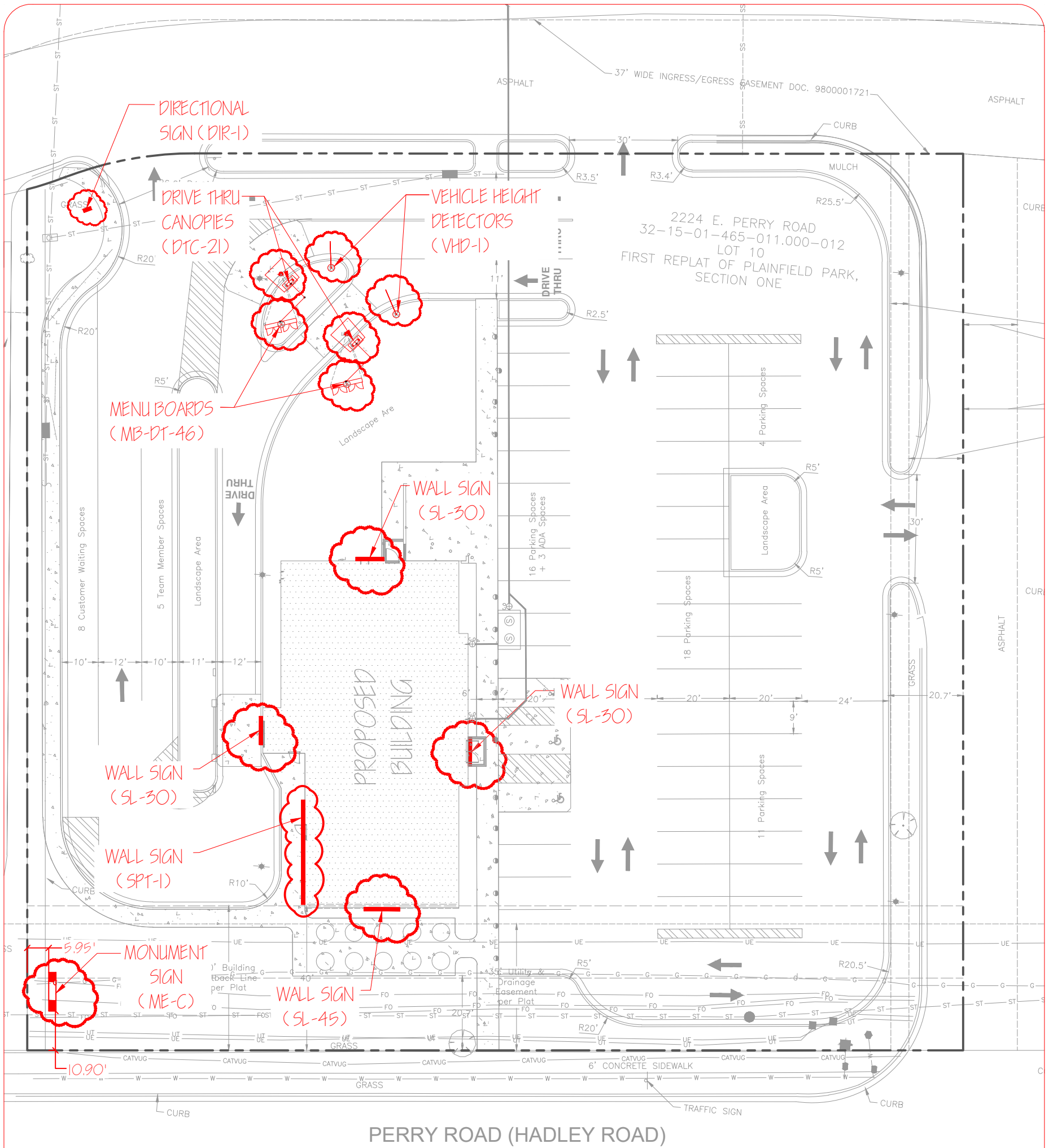
SALES PERSON: MARK WESSELL	DESIGNED BY: J KROEGER	AO: 51060
--------------------------------------	----------------------------------	---------------------

© 2020 Springfield Sign & Graphics Inc., Springfield Sign

This drawing is Copyrighted material, it remains the property of Springfield Sign unless otherwise agreed upon in writing. It is unlawful to use this drawing for bidding purposes, nor can it be reproduced, copied or used in the production of a sign without written permission from Springfield Sign & Graphics.

hisT is an artistic rendition and final colors / sizes may vary from that depicted herein.





PERRY ROAD (HADLEY ROAD)

* WALL SIGN AREA IS MATHEMATICAL AREA OF VISUAL OPENING OF OVAL SIGN-SEE ARTWORK

WALL SIGN AREA CALCULATIONS		
SIGN	SIZE (APPROX.)	AREA
SL-45	10'-0" (W) X 4'-8" (H)	46.67 S.F.
SL-30	7'-10 1/2" (W) X 4'-8" (H)	29.12 S.F.
SL-30	7'-10 1/2" (W) X 4'-8" (H)	29.12 S.F.
SL-30	7'-10 1/2" (W) X 4'-8" (H)	29.12 S.F.
SPT-1	346.75" (W) X 14" (H)	33.71 S.F.

WALL SIGN AREA TOTAL = 167.74 S.F.

* DIRECTIONAL SIGN AREA IS MATHEMATICAL AREA OF VISUAL OPENING OF OVAL SIGN-SEE ARTWORK

DIRECTIONAL SIGN AREA CALCULATIONS		
SIGN	SIZE (APPROX.)	AREA
DIR-1	2'-1 3/8" (W) X 11'-2 3/8" (H)	*1.99 S.F.

DIRECTIONAL SIGN TOTAL = *1.99 S.F.

* MONUMENT SIGN AREA IS MATHEMATICAL AREA OF VISUAL OPENING OF OVAL SIGN-SEE ARTWORK

PYLON SIGN AREA CALCULATIONS		
SIGN	SIZE (APPROX.)	AREA
ME-C	44" (H) X 122" (W)	37.27 S.F.

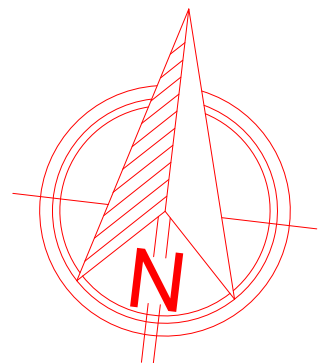
MONUMENT SIGN AREA TOTAL = 37.27 S.F.

* MENU BOARD AREA IS RECTANGULAR MATHEMATICAL AREA OF VISUAL OPENINGS IN MENU BOARD (SEE ATTACHED ART)

MENU BOARD AREA CALCULATIONS		
SIGN	SIZE (APPROX.)	AREA
MB-DT-46	8'-10 1/4" (W) X 5'-2 3/4" (H)	46.30 S.F.
MB-DT-46	8'-10 1/4" (W) X 5'-2 3/4" (H)	46.30 S.F.

MENU BOARD TOTAL = 92.60 S.F.

OVERALL SIGN AREA TOTAL = 299.60 S.F.



SCALE 1" = 30'

Project Number: 51860
 Drawn By: CLH
 Reviewed By: MW
 Date: 4-8-24

Sheet Number:
1 OF 1

CULVER FRANCHISING SYSTEM, INC.
NEW CULVER'S-SIGNAGE
 2224 E. PERRY ROAD
 PLAINFIELD, IN. 46168
SIGN PLACEMENT PLAN

Client:
 Culver Franchising System, Inc.
 540 Water Street
 Prairie du Sac, WI 53578
 p (608) 643-7980

LOCATION:

PLAINFIELD, IN.

SPRINGFIELD SIGN
 4825 E. Kearney St.
 Springfield, MO 65803
 (417) 862-2454