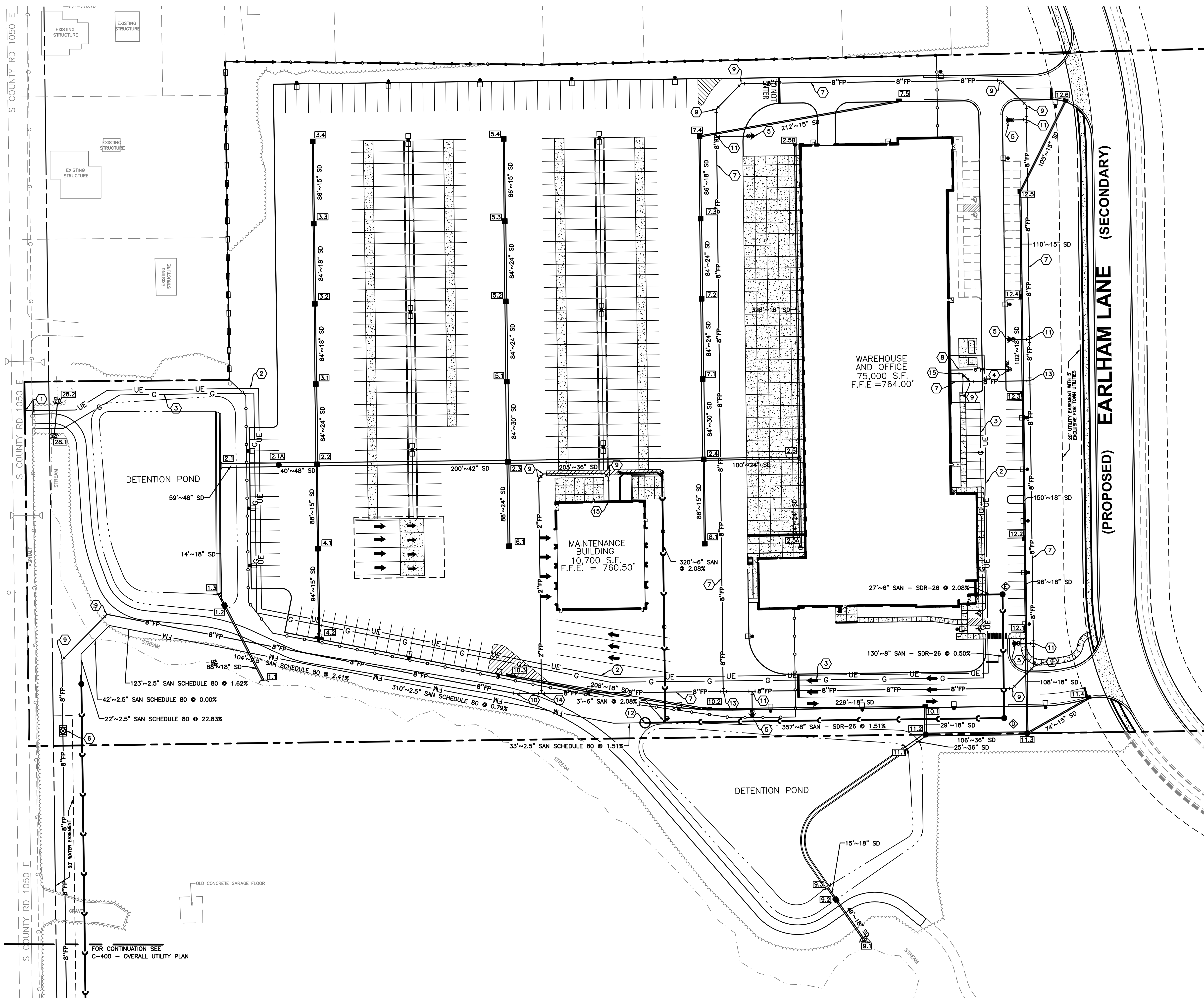


Layout Tab Name: UTILITY PLAN
 Last Saved By: Burchett, 10/18/2024 10:14:23 AM
 W:\Swin\DE\Ingy\Clients\Indiana Life Science Center\082429 Indiana Life Science Center\4.0 Disciplines\Civil\Cadd\82429-UTL.dwg Plotted By: Burchett, Trent Plotted: October 18, 2024, 1:38:04 PM



LEGEND

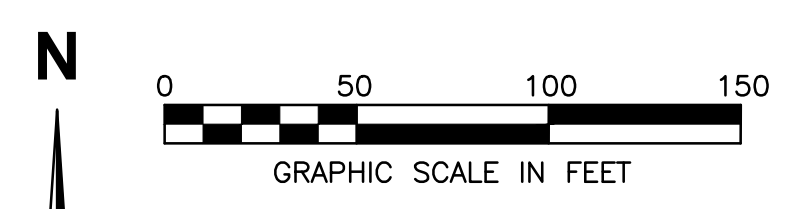
- UE UNDERGROUND ELECTRIC
- WTR WATER
- WTR SANITARY SEWER
- FM SANITARY SEWER FORCE MAIN
- SAN STORM SEWER
- SAN EXISTING SANITARY SEWER
- SD EXISTING STORM SEWER
- WTR EXISTING WATER
- FP EXISTING FIRE PROTECTION
- UE EXISTING UNDERGROUND ELECTRIC
- UT EXISTING UNDERGROUND TELECOM
- G EXISTING GAS
- CATCH BASIN
- STORM MANHOLE
- STORM DOWNSPOUT
- STORM HEADWALL
- STORM STRUCTURE ID
- FIRE HYDRANT
- SANITARY MANHOLE
- SANITARY CLEANOUT
- SANITARY STRUCTURE ID
- EXISTING SANITARY STRUCTURE
- EXISTING STORM STRUCTURE

KEYNOTES

1. CONNECT TO EXISTING UTILITY PER AGENCY REQUIREMENTS
2. UNDERGROUND ELECTRIC
3. GAS SERVICE
4. FREE STANDING SPRINKLER. SEE SHEET 12 OF PLAINFIELD TOWN STANDARDS FOR DETAILS
5. FIRE HYDRANT. SEE SHEET 12 OF PLAINFIELD TOWN STANDARDS FOR DETAILS
6. PRIVATE DISTRIBUTION WATER METER PIT. SEE SHEET 13 OF PLAINFIELD TOWN STANDARDS FOR DETAILS
7. 8" DUCTILE IRON FIRE PROTECTION LINE LOOP. SEE SHEETS 11 & 12 OF PLAINFIELD TOWN STANDARDS FOR DETAILS
8. 6" DUCTILE IRON FIRE PROTECTION LINE. SEE SHEETS 11 & 12 OF PLAINFIELD TOWN STANDARDS FOR DETAILS
9. 45° WATER BEND. SEE SHEET 12 OF PLAINFIELD TOWN STANDARDS FOR DETAILS
10. 11.25° WATER BEND. SEE SHEET 12 OF PLAINFIELD TOWN STANDARDS FOR DETAILS
11. 8"x8"x6" WATER TEE. SEE SHEET 12 OF PLAINFIELD TOWN STANDARDS FOR DETAILS
12. SANITARY SEWER E-ONE WH484 GRINDER PUMP STATION
13. 8"x8"x8" WATER TEE. SEE SHEET 12 OF PLAINFIELD TOWN STANDARDS FOR DETAILS
14. 8"x8"x2" WATER TEE. SEE SHEET 12 OF PLAINFIELD TOWN STANDARDS FOR DETAILS
15. 2" TYPE K COPPER DOMESTIC WATER SERVICE

NOTES

1. CONTRACTOR SHALL REFER TO OTHER PLANS WITHIN THIS CONSTRUCTION SET FOR OTHER PERTINENT INFORMATION. IT IS NOT THE ENGINEER'S INTENT THAT ANY SINGLE PLAN SHEET WITHIN THIS SET OF DOCUMENTS FULLY DEPICT ALL WORK ASSOCIATED WITH THE PROJECT.
2. REFER TO ARCHITECTURAL PLANS FOR EXACT BUILDING UTILITY ENTRANCE LOCATIONS AND MEP PLANS FOR CONTINUATION INTO BUILDING.
3. ALL PROPOSED PIPE SLOPES SHOWN ARE MINIMUM REQUIRED. CONTRACTOR SHALL CONFIRM ACTUAL SLOPES REQUIRED BASED ON EXISTING INVERT ELEVATIONS.
4. ALL STORM PIPE MATERIAL SHALL BE EITHER RCP OR HP STORM.
5. ALL WATER SERVICE PIPE MATERIAL SHALL BE DUCTILE IRON PER WATER DEPARTMENT REQUIREMENTS.
6. ALL SANITARY PIPE MATERIAL SHALL BE SDR 35 PER SANITARY SEWER DEPARTMENT REQUIREMENTS.
7. CONTRACTOR TO PRACTICE CAUTION WHEN WORKING IN AREA OF EXISTING UTILITIES.
8. ALL UTILITY MATERIALS AND INSTALLATION METHODS SHALL FOLLOW PLAINFIELD TOWN STANDARD DETAILS.



ISSUANCE SCHEDULE	DESCRIPTION
NUMBER	DATE

INDIANA LIFE SCIENCES PARK

PACE AIR FREIGHT HQ

PROJECT NO: 82429.12
 DATE ISSUED: 10/18/2024
 DESIGNED BY: TAB
 DRAWN BY: SMB
 CHECKED BY: JGM

SHEET NAME:
 UTILITY PLAN

SHEET NO:
C-401

PLAINFIELD, INDIANA