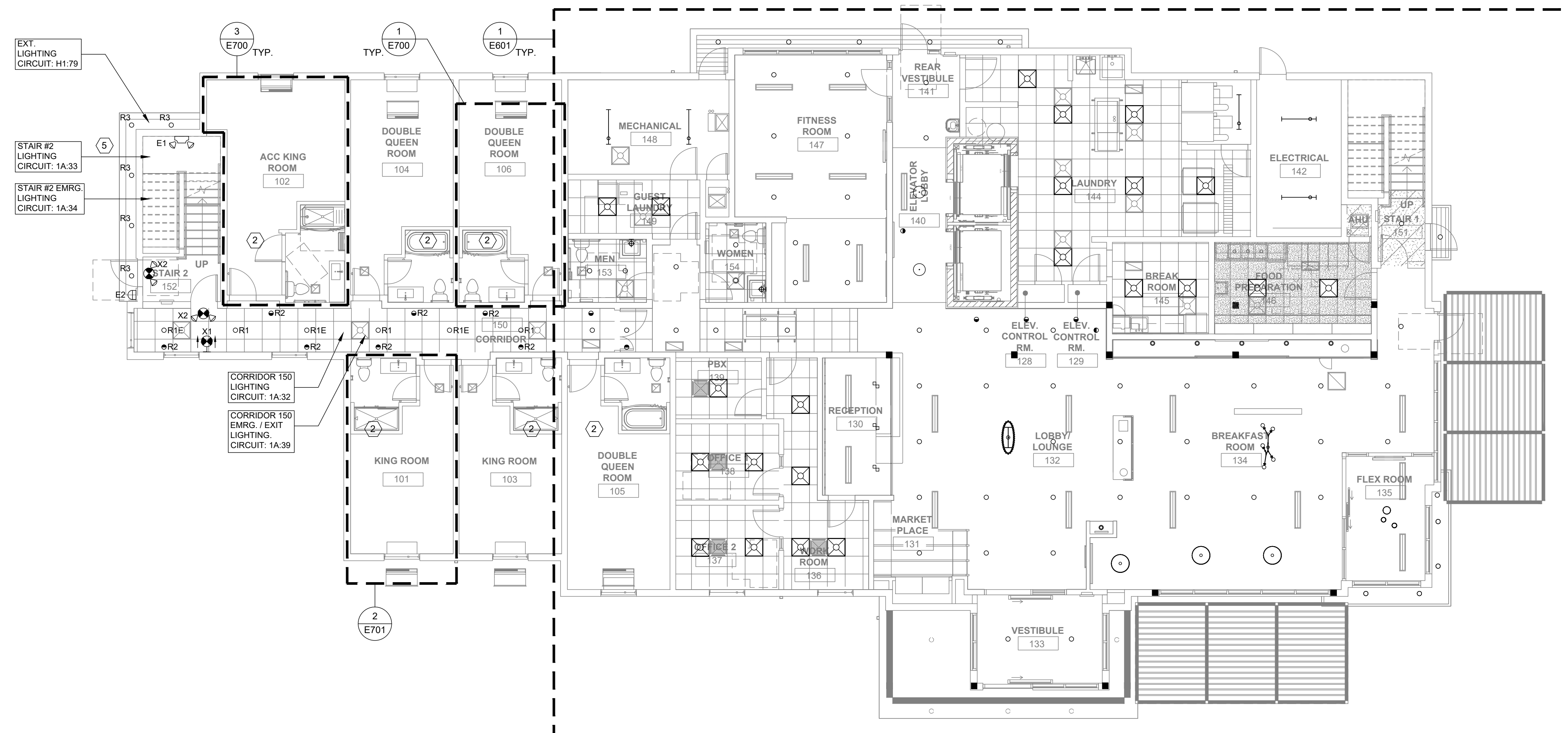


1 FIRST FLOOR POWER & SYSTEMS PLAN
SCALE: 1/8" = 1'-0"



2 FIRST FLOOR LIGHTING PLAN
SCALE: 1/8" = 1'-0"

- GENERAL NOTES:**
- REFERENCE SHEET E000 FOR ELECTRICAL COVER SHEET, SCHEDULES AND DETAILS.
 - REFERENCE SHEET E001 FOR LEGENDS, ABBREVIATIONS AND NOTES.
 - REFERENCE SHEET E002 FOR ONE LINE DIAGRAM AND DETAILS.
 - REFERENCE SHEET E003-E005 FOR ELECTRICAL SCHEDULES AND DETAILS.
 - BRANCH CIRCUITRY NUMBERS SHOWN ARE FOR GROUPING PURPOSES ONLY. FIELD VERIFY FINAL CIRCUIT NUMBERS.
 - ALL EXTERIOR LIGHT FIXTURES SHALL BE CONTROLLED BY TIME CLOCK/PHOTOCELL UNLESS OTHERWISE NOTED.
 - FINAL FIRE ALARM DESIGN BY OTHERS. FIRE ALARM SYSTEM DESIGNED BY FIRE ALARM CONTRACTOR TO MEET ALL STATE AND LOCAL CODES.
 - SEE ARCHITECTURAL DRAWINGS FOR WALL TYPES. SEAL ALL WALL PENETRATIONS WITH APPROPRIATE SEALANT. COORDINATE FIRE PROOFING REQUIREMENTS FOR PENETRATIONS AND PROVIDE UL LISTED FIRESTOP SYSTEM AS REQUIRED.
 - CONTRACTOR SHALL REVIEW MECHANICAL AND PLUMBING DRAWINGS AND COORDINATE ELECTRICAL EQUIPMENT LOCATIONS WITH MECHANICAL EQUIPMENT, PLUMBING EQUIPMENT, DUCT WORK AND PIPING. COORDINATE EQUIPMENT CONNECTION REQUIREMENTS WITH SHOP DRAWINGS. MAKE ALL WIRING CONNECTIONS AS REQUIRED. PROVIDE DISCONNECTS AND STARTERS AS REQUIRED.
 - WIRELESS ACCESS POINT (WAP) AND SECURITY CAMERA LOCATIONS AS REQUIRED SHALL BE DETERMINED BY OWNER. COORDINATE PRIOR TO BID.
 - PROVIDE COMMUNICATIONS FOR HEARING IMPAIRED ROOMS. SEE LARGE SCALE GUEST ROOM DRAWINGS. COORDINATE SMOKE DETECTOR LOCATIONS WITH CEILING ELEMENTS. DO NOT INSTALL ON ACCESS PANELS.
 - DO NOT INSTALL CONDUITS EXPOSED ON EXTERIOR OF BUILDING. ANY CONDUITS SHOWN ARE TO PROVIDE DESIGN INTENT OF CIRCUITING AND CONTROL.
 - COORDINATE LOW VOLTAGE WORK WITH LOW VOLTAGE CONTRACTOR.
 - EXIT, EMERGENCY, AND NIGHT LIGHTS SHALL BE CIRCUITED TO UNSWITCHED CONDUCTOR.
 - PROVIDE ALL BRANCH CIRCUIT WIRING AS REQUIRED FOR COMPLETE INSTALLATION AND OPERATION. PROVIDE ALL CONDUIT WIRING AS REQUIRED FOR COMPLETE INSTALLATION AND OPERATION. 0-10V WIRING SHALL BE IN CONDUIT WHERE CEILINGS ARE EXPOSED OR BE PLENUM RATED CABLE ABOVE ACCESSIBLE CEILINGS AND COMPLY WITH NEC CLASS 2 WIRING METHODS.
 - REFER TO ARCHITECTURAL REFLECTED CEILING PLANS FOR EXACT LOCATIONS OF LIGHT FIXTURES.
 - REFER TO ARCHITECTURAL DRAWINGS FOR LOCATIONS OF EXITS AND CHEVRON ARROW INDICATIONS.
 - VERIFY CEILING CONSTRUCTION WITH ARCHITECTURAL DRAWINGS AND GENERAL CONTRACTOR. PROVIDE ALL NECESSARY MOUNTING HARDWARE FOR COMPLETE INSTALLATION OF LIGHT FIXTURES.
 - WHERE RECESSED FIXTURES ARE INSTALLED IN FIRE RATED CEILINGS, PROVIDE FIRE RATED BOX OR ENCLOSURE AS REQUIRED BY CODE TO MAINTAIN RATING OF CEILING.
 - COORDINATE LIGHT FIXTURE LOCATIONS AND RACEWAY INSTALLATION WITH MECHANICAL EQUIPMENT, DUCTWORK AND PIPING SYSTEMS PRIOR TO ROUGH-IN. LIGHT FIXTURE LOCATIONS TAKE PRECEDENCE.
 - CAULK/SEAL ALL WALL PENETRATIONS WITH APPROPRIATE SEALANT. PENETRATIONS THROUGH FIRE RATED WALLS/CEILINGS SHALL BE SEALED WITH AN APPROVED FIRES TOP SYSTEM FOR THE RATING OF THE ASSEMBLY.
 - PROVIDE ADDITIONAL EXIT SIGN AND EMERGENCY LIGHTING UNITS IF REQUIRED BY LOCAL AHJ AT NO ADDITIONAL COST TO THE OWNER. COORDINATE WITH AHJ PRIOR TO BID.
 - REFERENCE ARCHITECT PROVIDED CHOICE BRAND STANDARDS AND PRODUCT MANUAL FOR ELECTRICAL DEVICES AND LIGHTING FIXTURE SPECIFICATIONS.

- PROTOTYPICAL GENERAL NOTES:**
- CENTER LIGHT FIXTURES IN SPACE THAT ARE NOT DIMENSIONED.
 - REFER TO ARCHITECTURAL SERIES DRAWINGS FOR LIGHTING FIXTURE LAYOUT DIMENSIONS.
 - SPACING OF CORRIDOR LIGHTS SHALL BE BASED ON 20 FOOTCANDLES, MINIMUM, MAINTAINED.
 - PROVIDE BATTERY BALLAST LIGHT FIXTURES IN LIEU OF WALL MOUNTED BATTERY PACK UNITS FOR EGRESS LIGHTING.
 - PROVIDE BATTERY BACKED-UP EXIT LIGHTS.
 - CIRCUIT EGRESS AND EXIT LIGHTS INDEPENDENT FROM NON-EMERGENCY LIGHTS FOR REDUNDANCY.
 - CONTROL ALL EXTERIOR LIGHTS BY PHOTOCELL.
 - PROVIDE INTERNET ACCESS AS REQUIRED BY CHOICE HOTELS.
 - PROVIDE POWER AND PHOTOCELL TO INTERNALLY ILLUMINATED CHANNEL LETTERS AND LOGO PER SIGNAGE MANUFACTURERS REQUIREMENTS.
 - PROVIDE ZONE LIGHTING CONTROLS VIA GREENGATE LITEKEEPER LIGHTING CONTROL RELAY PANEL. LIGHT SWITCH BANK LOCATED IN WORKROOM WITH DIMMABLE FEATURE.
 - ALL OUTLETS LOCATED AT 18" AFF UNO

- KEY NOTES: (#)**
- INSTALL CARD READER POWER SUPPLY ABOVE NEAREST ACCESSIBLE CEILING. E.C. TO PROVIDE EMT CONDUITS FROM LOW VOLTAGE TRANSFORMER TO DOOR LOCK AND CARD READER PROVIDE AND INSTALL SYSTEM PER MANUFACTURER'S INSTRUCTIONS.
 - REFER TO ENLARGED GUESTROOM PLANS FOR ELECTRICAL INFORMATION.TYPICAL.
 - PROVIDE CONVENIENCE OUTLETS IN GUEST CORRIDORS EVERY 30'-0" (AT A MINIMUM)
 - PROVIDE BRANCH CIRCUITS BRANCH PANEL TO HVAC UNIT AND CONNECT WITH NON FUSED DISCONNECT. COORDINATE FINAL BRANCH CIRCUIT REQUIREMENTS WITH HVAC SUBMITTALS. TYPICAL ALL ACCUS.
 - EXTERIOR LIGHT FIXTURES SHALL BE CONTROLLED BY TIME CLOCK/PHOTOCELL.
 - INSTALL PHOTOCELL ON NORTH FACE OF BUILDING. TIE IN PHOTOCELL TO TIME CLOCK IN MAIN ELECTRICAL ROOM.

SEBREE ARCHITECTS
www.SEBREEarchitects.com
sebree@SEBREEarchitects.com

97 Dover Street
Suite 400
Avon, IN 46123
Phone: 317-272-7800
Fax: 317-272-7808

GA CONSULTING ENGINEERS
MECHANICAL ELECTRICAL & PLUMBING
CONSULTANT

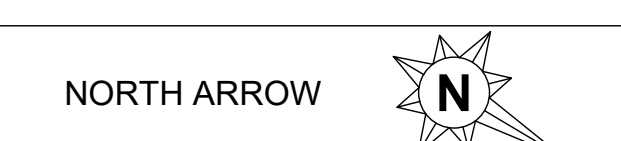
Gra Engineering, P.C.
Email: aig@GraEngineering.com
North Office - 874 Cheltenham Way
Avon, IN 46123
South Office - 262 Tradewinds
Santa Rosa Beach FL 32459

SLEEP INN IN PLAINFIELD
1331 SECTION STREET
PLAINFIELD, INDIANA

BRAND REVIEW SET NOT FOR CONSTRUCTION

NO.	DATE	BY	DESCRIPTION

DATE: XXXX
PROJECT NO: 250118
CHECKED BY: []
FIRST FLOOR ELECTRICAL PLANS
SHEET NO. **E100**



THESE PLANS AND SPECIFICATIONS ARE PROTECTED UNDER FEDERAL COPYRIGHT LAWS. © SEBREE ARCHITECTS, INC. ALL RIGHTS RESERVED.