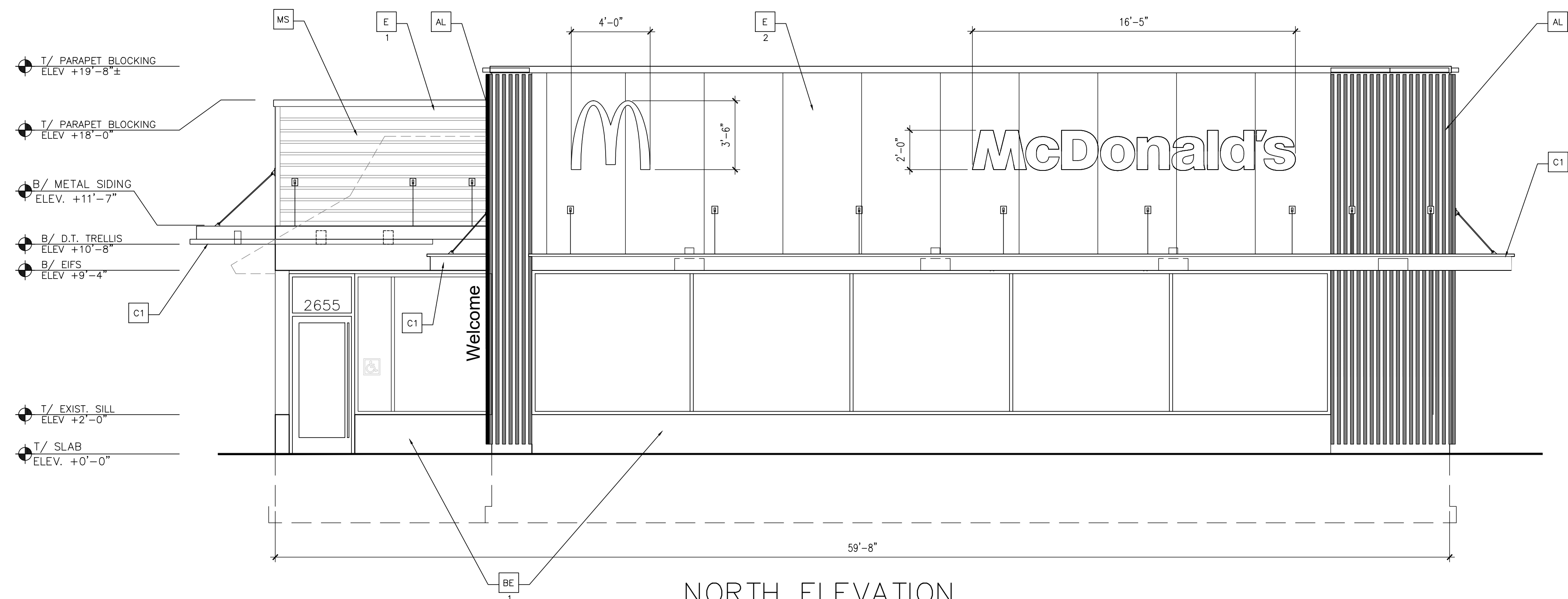


WEST ELEVATION

SCALE: 1/4" = 1'-0"

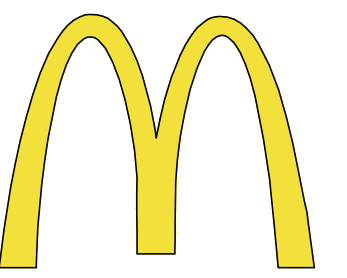
KEY NOTES:

- AL ALUMINUM BATTEN SYSTEM: 2"x2" PROFILE. COLOR: WOOD GRAIN, BACK RAIL UNFINISHED, END CAP PAINTED TO MATCH.
- AP ALPOLIC METAL PANEL COLOR: RAL7022
- BE EXISTING CMU TO REMAIN. PAINTED SHERWIN WILLIAMS SW-7091 'GAUNTLET GRAY'
- BN NEW CMU VENEER PAINTED SHERWIN WILLIAMS SW-7091 'GAUNTLET GRAY'
- C1 ALUMINUM CANOPY SYSTEM W/ FASCIA. COLOR: WHITE.
- C2 ALUMINUM CANOPY SYSTEM. COLOR: RAL 7022.
- E NEW EXTERIOR INSULATION FINISH SYSTEM (E.I.F.S.)  
1 COLOR 1: SHERWIN WILLIAMS SW-7091 'GAUNTLET GRAY'  
COLOR 2: SHERWIN WILLIAMS SW-7069 'IRON ORE'
- G GUTTERS AND DOWNSPOUTS TO MATCH BUILDING BASE COLOR.
- L2 RADIAL SCONCE LIGHT FIXTURE- SEE E2.0
- C1 COLOR:  
C1= WHITE  
C2= PLATINUM SILVER
- LE ACCENT LIGHTING - SEE E2.1
- L1 LED LIGHT:  
L1 = SLIM LED (DOWN ONLY)  
L2 = INTEGRAL CANOPY FIXTURE  
L3 = UP ONLY FLOOD LIGHT FIXTURE
- MS 7" REVEAL METAL WALL PANEL SYSTEM BY METAL ERA. COLOR: WEATHERED ZINC.



NORTH ELEVATION

SCALE: 1/4" = 1'-0"



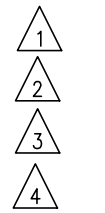
McDonald's USA, LLC  
STATE/SITE #13-0501

PROJECT TITLE:  
**MRP-EOTF REMODEL**

2655 EAST MAIN STREET  
PLAINFIELD, INDIANA

SHEET TITLE:  
**ELEVATIONS**

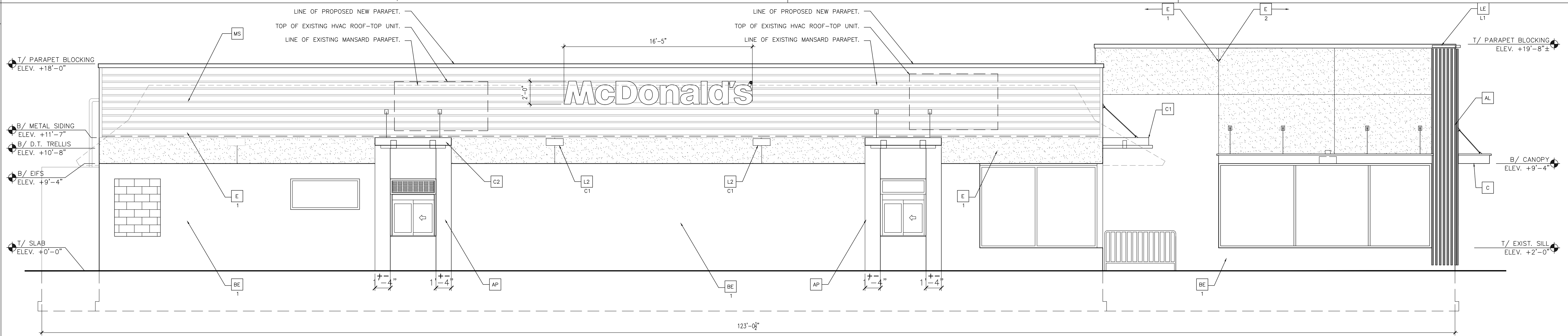
DATE: MAY 24, 2021  
PROJECT NUMBER: 18006  
DRAWN BY: cjm CHECKED BY: WTS  
REVISED:



ARCHITECTURAL  
CONCEPTS,  
INC.  
Architecture-Planning-Engineering  
609 Massachusetts Ave. Indianapolis IN 46204-1606  
Telephone: (317) 638-7600 FAX: (317) 633-6674  
COPYRIGHT, 2021 by Architectural Concepts, Inc. All rights reserved.

SHEET NUMBER:  
**A2.0**

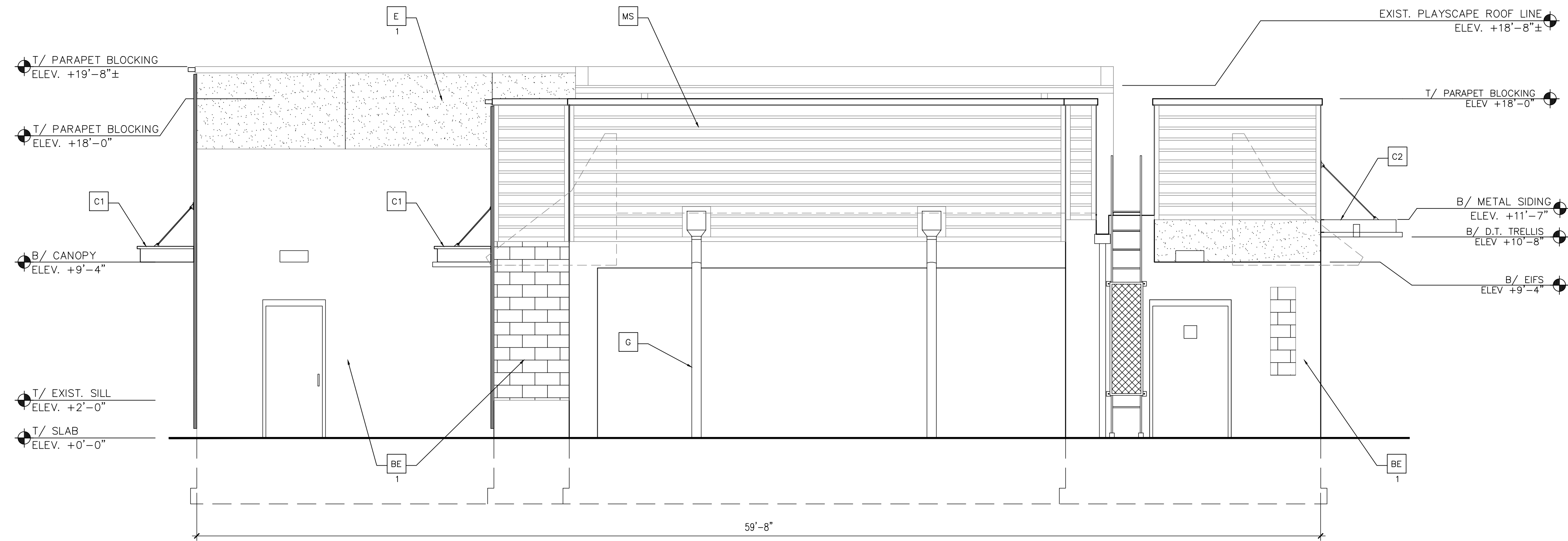
OF: TWO ELEVATIONS



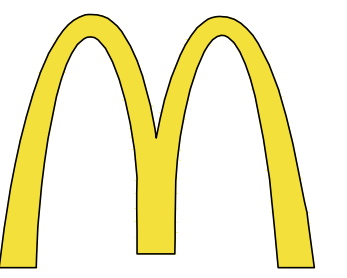
**EAST ELEVATION**  
SCALE: 1/4" = 1'-0"

**KEY NOTES:**

- AL ALUMINUM BATTEN SYSTEM: 2"x2" PROFILE. COLOR: WOOD GRAIN, BACK RAIL UNFINISHED, END CAP PAINTED TO MATCH.
- AP ALPOLIC METAL PANEL COLOR: RAL7022
- BE EXISTING CMU TO REMAIN. PAINTED SHERWIN WILLIAMS SW-7091 'GAUNTLET GRAY'
- BN NEW CMU VENEER PAINTED SHERWIN WILLIAMS SW-7091 'GAUNTLET GRAY'
- C1 ALUMINUM CANOPY SYSTEM W/ FASCIA. COLOR: WHITE.
- C2 ALUMINUM CANOPY SYSTEM. COLOR: RAL 7022.
- E NEW EXTERIOR INSULATION FINISH SYSTEM (E.I.F.S.)  
COLOR 1: SHERWIN WILLIAMS SW-7091 'GAUNTLET GRAY'  
COLOR 2: SHERWIN WILLIAMS SW-7069 'IRON ORE'
- G GUTTERS AND DOWNSPOUTS TO MATCH BUILDING BASE COLOR.
- L2 RADIAL SCONCE LIGHT FIXTURE- SEE E2.0  
COLOR:  
C1= WHITE  
C2= PLATINUM SILVER
- LE ACCENT LIGHTING - SEE E2.1  
L1 LED LIGHT:  
L1 = SLIM LED (DOWN ONLY)  
L2 = INTEGRAL CANOPY FIXTURE  
L3 = UP ONLY FLOOD LIGHT FIXTURE
- MS 7" REVEAL METAL WALL PANEL SYSTEM BY METAL ERA. COLOR: WEATHERED ZINC.



**SOUTH ELEVATION**  
SCALE: 1/4" = 1'-0"



**McDonald's USA, LLC**  
STATE/SITE #13-0501

PROJECT TITLE:  
**MRP-EOTF REMODEL**

2655 EAST MAIN STREET  
PLAINFIELD, INDIANA

SHEET TITLE:  
**ELEVATIONS**

DATE: MAY 24, 2021  
PROJECT NUMBER: 18006  
DRAWN BY: cjm CHECKED BY: WTS  
REVISED:



Architecture-Planning-Engineering  
609 Massachusetts Ave. Indianapolis IN 46204-1606  
Telephone: (317) 638-7600 FAX: (317) 633-6674  
COPYRIGHT, 2021 by Architectural Concepts, Inc. All rights reserved.

SHEET NUMBER:  
**A2.1**

OF: TWO ELEVATIONS