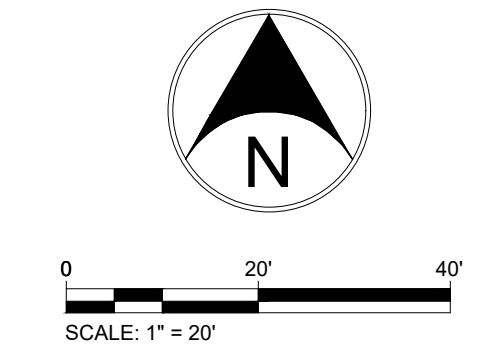


SUBDIVISION
170, PAGES 2ABC
925722

FINAL PLAT MEIJER SUBDIVISION
PLAT CABINET 8, SLIDE 270, PAGES 2ABC
INSTR. NO. 201925722



FRITZ
ENGINEERING SERVICES

14020 MISSISSINEWA DRIVE
CARMEL, INDIANA 46033
P: 317.324.8695 F: 317.324.8717
www.Fritz-Eng.com

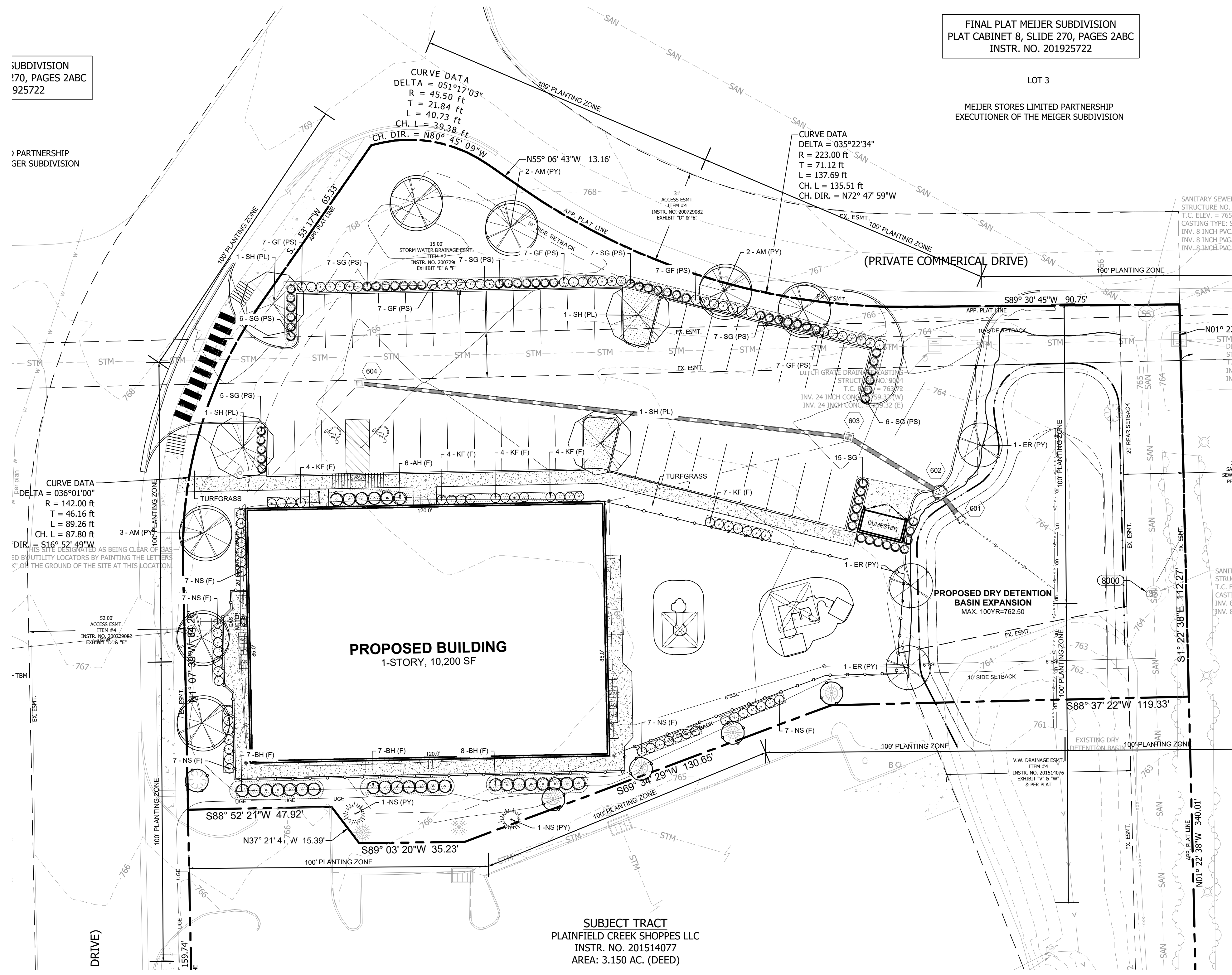


SYMBOL LEGEND

PROPOSED CANOPY TREE	
PROPOSED ORNAMENTAL TREE	
PROPOSED EVERGREEN TREE	
PROPOSED SHRUB/GRASS	
MULCH BED	
TREE PROTECTION	

PARTNERSHIP
GER SUBDIVISION

LOT 3
MEIJER STORES LIMITED PARTNERSHIP
EXECUTIONER OF THE MEIJER SUBDIVISION



GENERAL NOTES

- PLANT MATERIAL SHALL BE SELECTED AND INSTALLED TO COMPLY WITH THE FOLLOWING REQUIREMENTS:
- LANDSCAPE MATERIALS SELECTED SHALL BE APPROPRIATE TO LOCAL GROWING AND CLIMATE CONDITIONS AND FOLLOW THE GUIDELINES SET BY THE AMERICAN STANDARD FOR NURSERY STOCK, ANSI Z60.1 (CURRENT EDITION) AMERICAN ASSOCIATION OF NURSERYMEN, INC.
 - ALL PLANTS SHALL BE OF SPECIMEN QUALITY, SUPERIOR FORM, HEALTHY, VIGOROUS, WELL BRANCHED, DENSELY FOLIATED WHEN IN LEAF, FREE OF DISEASE AND INSECTS EGGS OR LARVAE AND SHALL HAVE WELL-DEVELOPED ROOT SYSTEMS. PLANTS SHALL BE FREE FROM DAMAGE OR CONDITIONS THAT WOULD PREVENT NORMAL GROWTH.
 - ALL PLANTING MATERIAL SHALL BE IN ACCORDANCE WITH THE MOST CURRENT PUBLICATION OF THE AMERICAN STANDARD FOR NURSERY STOCK AS PRODUCED BY THE AMERICAN NATIONAL STANDARDS INSTITUTE, INC.
 - STREET TREES AND SHADE TREES: ALL STREET TREES AND SHADE TREES AT THE TIME OF PLANTING SHALL HAVE A MINIMUM CALIPER OF TWO AND ONE-HALF (2.5) INCHES WHEN MEASURED FROM SIX (6) INCHES ABOVE GROUND LEVEL.
 - ORNAMENTAL TREES: ALL ORNAMENTAL TREES AT THE TIME OF PLANTING SHALL HAVE A MINIMUM CALIPER OF ONE AND ONE-HALF (1.5) INCHES WHEN MEASURED FROM SIX (6) INCHES ABOVE GROUND LEVEL.
 - EVERGREEN TREES: ALL EVERGREEN TREES AT THE TIME OF PLANTING SHALL HAVE A MINIMUM HEIGHT OF SIX (6) FEET.
 - SHRUBBERY: ALL DECIDUOUS AND EVERGREEN SHRUBS AT THE TIME OF PLANTING SHALL HAVE A MINIMUM HEIGHT OF EIGHTEEN (18) INCHES.
 - IRRIGATION SYSTEMS SHALL NOT BE INSTALLED IN THE CITY OWNED RIGHT-OF-WAY WITHOUT APPROVAL BY THE BOARD OF PUBLIC WORKS. THE CITY DOES NOT ASSUME RESPONSIBILITY FOR ANY DAMAGE INCURRED TO AN UNPERMITTED IRRIGATION SYSTEM THAT IS CAUSED BY WORK BEING PERFORMED IN THESE AREAS.
 - IT SHALL BE THE RESPONSIBILITY OF THE OWNERS AND THEIR AGENTS TO INSURE PROPER MAINTENANCE OF ALL TREES, SHRUBBERY AND OTHER LANDSCAPING APPROVED AS PART OF THE DEVELOPMENT PLAN/ADLS PLANS. THIS SHOULD CONSIST OF WATERING, FERTILIZING, PROPER MULCHING, CLEARING OF DEBRIS AND WEEDS, MONITORING FOR PESTS AND DISEASE, MOWING, PRUNING, THE REMOVAL AND TIMELY REPLACEMENT OF DEAD, HAZARDOUS OR DYING PLANTS, TREATING FOR DISEASE OR INJURY, OR ANY OTHER SIMILAR ACT(S) WHICH PROMOTES GROWTH, HEALTH, BEAUTY AND THE LIFE OF TREES, SHRUBS, TURF AND OTHER PLANTS.

REVISIONS AND ISSUES	DATE	BY

GENERAL NOTES / LEGEND:

"IT'S THE LAW"
811
Know what's below.
Call before you dig.
2 WORKING DAYS BEFORE YOU DIG.

PROJECT:
**KID CITY
PLAINFIELD**

PROJECT LOCATION:
147 MEIJER DR.
TOWN OF PLAINFIELD, INDIANA 46168
HENDRICKS COUNTY

SECTION, TOWNSHIP, RANGE:
SE 1/4, S26, T15N, R1E

CLIENT:
metaCRE

841 E. 64TH ST. STE. 201
INDIANAPOLIS, INDIANA 46220

PLAN DATE:
1/4/2024

DESIGN: AF CHECK: AF DRAWN: KG

PROJECT NO:
2310004

SHEET NAME:
LANDSCAPE PLAN

SHEET NO.
L101

Quantity	Key	Botanical Name	Common Name	Condition	Size	Comments
Deciduous Trees						
3	ER	Cercis Canadensis	Eastern Redbud	B&B Single	1.5" Cal.	For spacing see plan
7	AM	Acer x freemanii 'Autumn Blaze'	Autumn Blaze' Maple	B&B	2.5" Cal.	For spacing see plan
4	SH	Gleditsia triacanthos inermis	Skyline Honeylocust	B&B	2.5" Cal.	For spacing see plan
Evergreen Trees						
2	NS	Picea abies	Norway Spruce	Cont.	6'	For spacing see plan
Shrubs						
35	GF	Spirea x bumalda	Gold Flame Spirea	Cont.	24"	Space @ 36" o.c.
65	SG	Juniperus chinensis 'Sea Green'	Sea Green Juniper	Cont.	24"	Space @ 36" o.c.
6	AH	Hydrangea arborescens 'Annabelle'	Annabelle Hydrangea	Cont.	24"	Space @ 60" o.c.
22	BH	Hydrangea paniculata	Bobo' Hydrangea	Cont.	24"	Space @ 36" o.c.
Ornamental Grass/Perennials						
23	KF	Calamagrostis acutiflora	Karl Foerster Feather Reed Grass	Cont.	#2	Space @ 36" o.c.
35	NS	Panicum virgatum 'Northwind'	Northwinds Sweetgrass	Cont.	#2	Space @ 36" o.c.

NOTE: ABBREVIATIONS IN THE PLAN PLANT MATERIAL CALLOUTS STAND FOR THE FOLLOWING. PY = Perimeter Yard / F = Foundation / PL = Interior Parking Lot / PS = Parking Lot Screen

PLANTING SCHEDULE

ALL PLANTING MATERIAL SHALL BE INSTALLED AND MAINTAINED BY THE LANDSCAPE CONTRACTOR. THE LANDSCAPE CONTRACTOR SHALL BE RESPONSIBLE FOR OBTAINING ALL NECESSARY PERMITS AND APPROVALS. THE LANDSCAPE CONTRACTOR SHALL BE RESPONSIBLE FOR OBTAINING ALL NECESSARY PERMITS AND APPROVALS. THE LANDSCAPE CONTRACTOR SHALL BE RESPONSIBLE FOR OBTAINING ALL NECESSARY PERMITS AND APPROVALS.

© 2024 FRITZ ENGINEERING SERVICES, LLC