

FRONT ELEVATION-1  
SCALE: 3/16"=1'-0"



FRONT ELEVATION-2  
SCALE: 3/16"=1'-0"

01	
02	
03	
04	
05	
06	
07	
08	
09	
10	
11	
12	

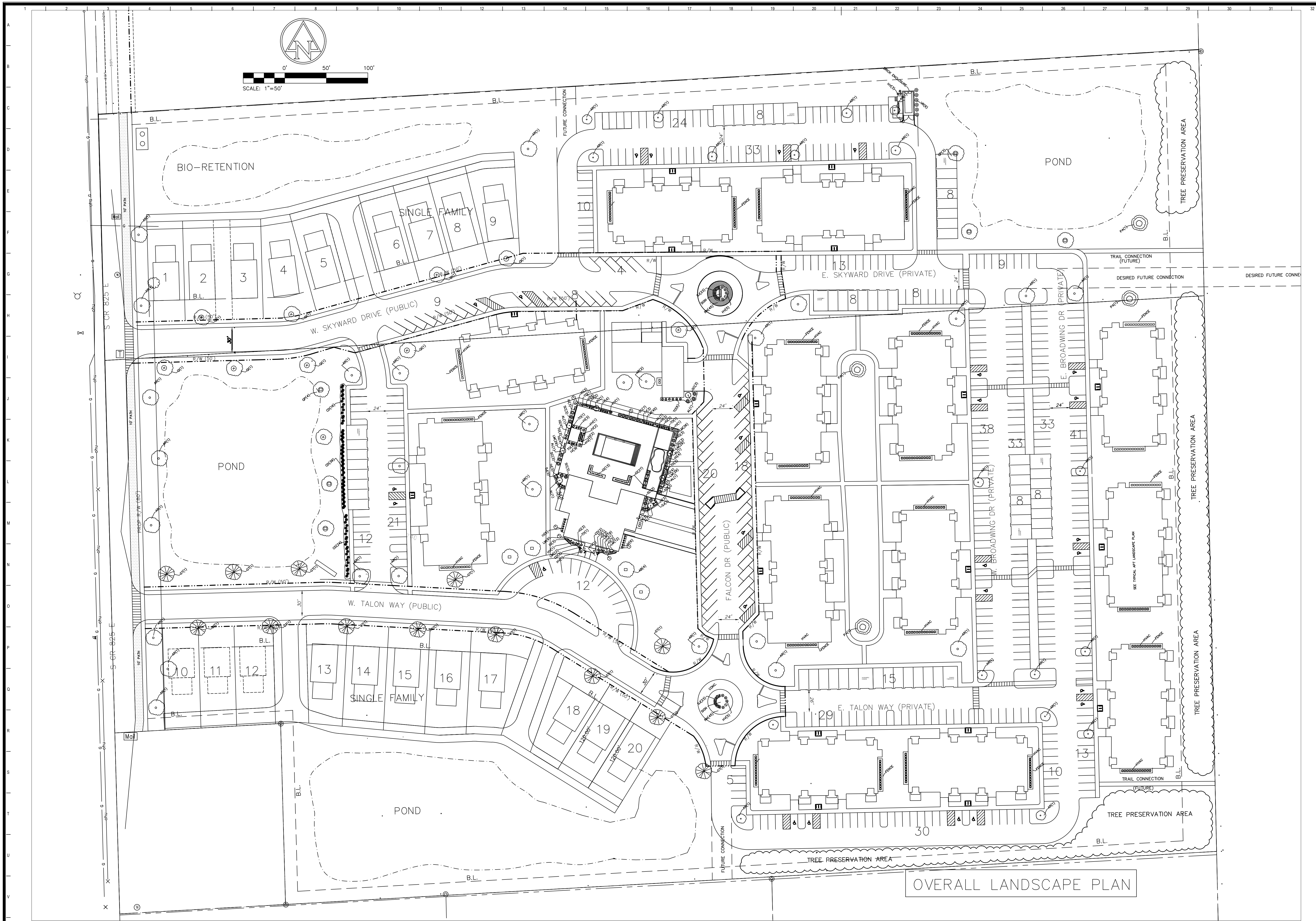
DRAWING REVISIONS

AL TURA  
Overall Masterplan Road & Utility Layout  
Plainfield, Indiana

CERTIFIED BY:

DRAWN BY : AHG  
CHECK BY : AHG  
DATE :  
COMMISSION NO. :

BUILDING  
DRAWINGS



13520 Shakamac Dr.  
Carmel, IN 46032  
317-407-5337  
altura@gerdom.com

**Gerdom**  
Engineering

NO.	DATE	DESCRIPTION
1		REVIEW COMMENTS 3/22
2		REVIEW COMMENTS 4/28
3		
4		
5		
6		
7		
8		
9		
10		
11		
12		

DRAWING REVISIONS

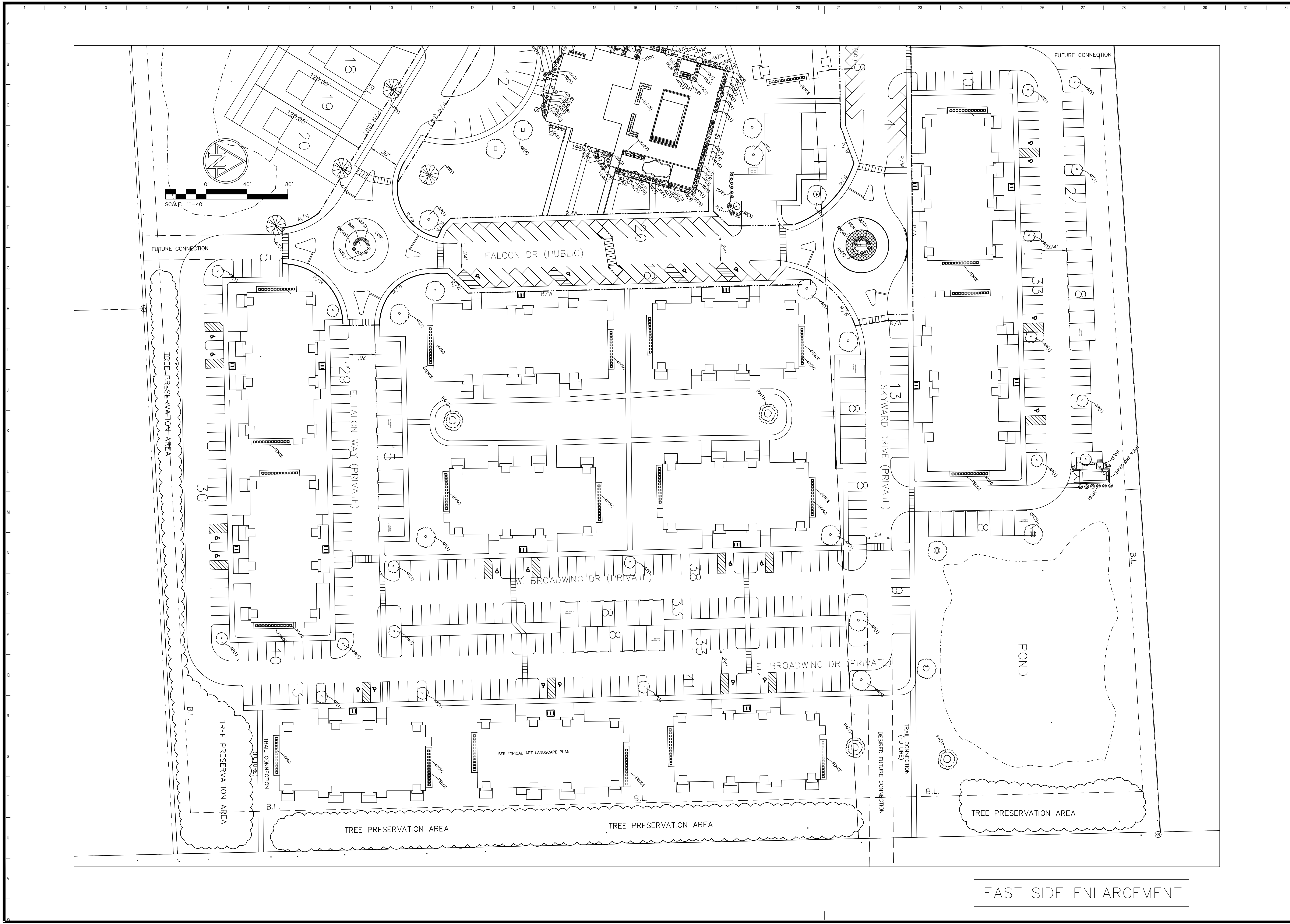
ALTURA  
Overall Masterplan Layout  
Plainfield, Indiana

CERTIFIED BY:

DRAWN BY: AHG  
CHECK BY: AHG  
DATE: 4-8-2026  
COMMISSION NO.:

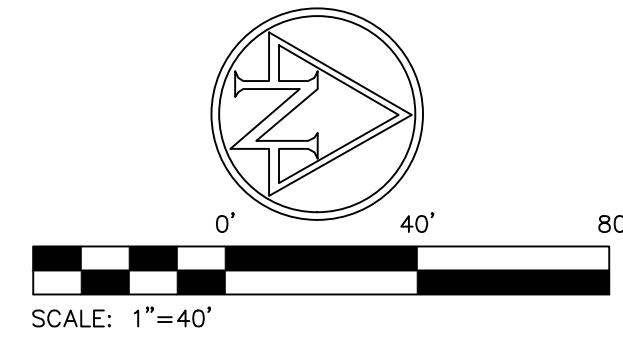
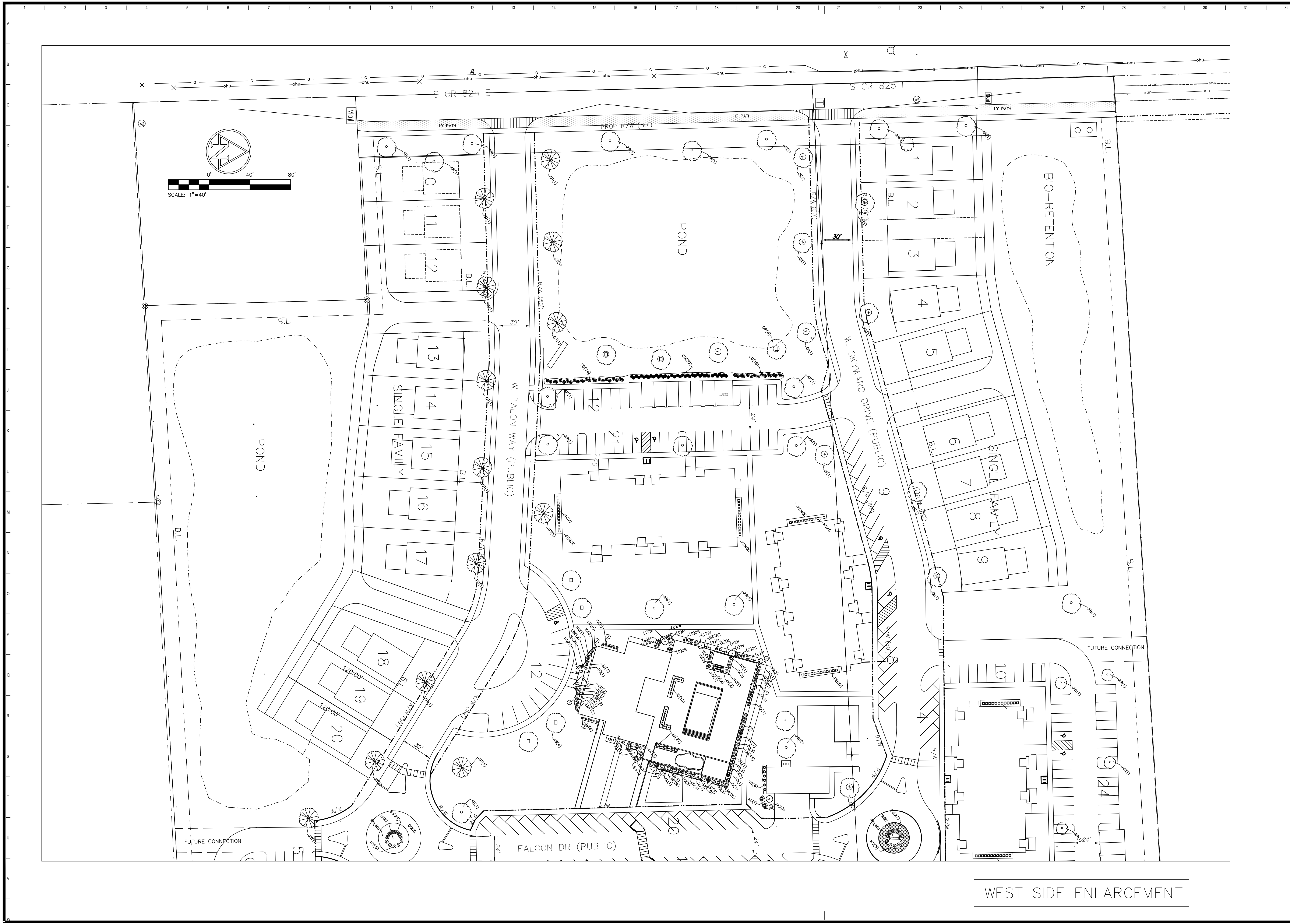
LANDSCAPE PLAN

L1.0



EAST SIDE ENLARGEMENT

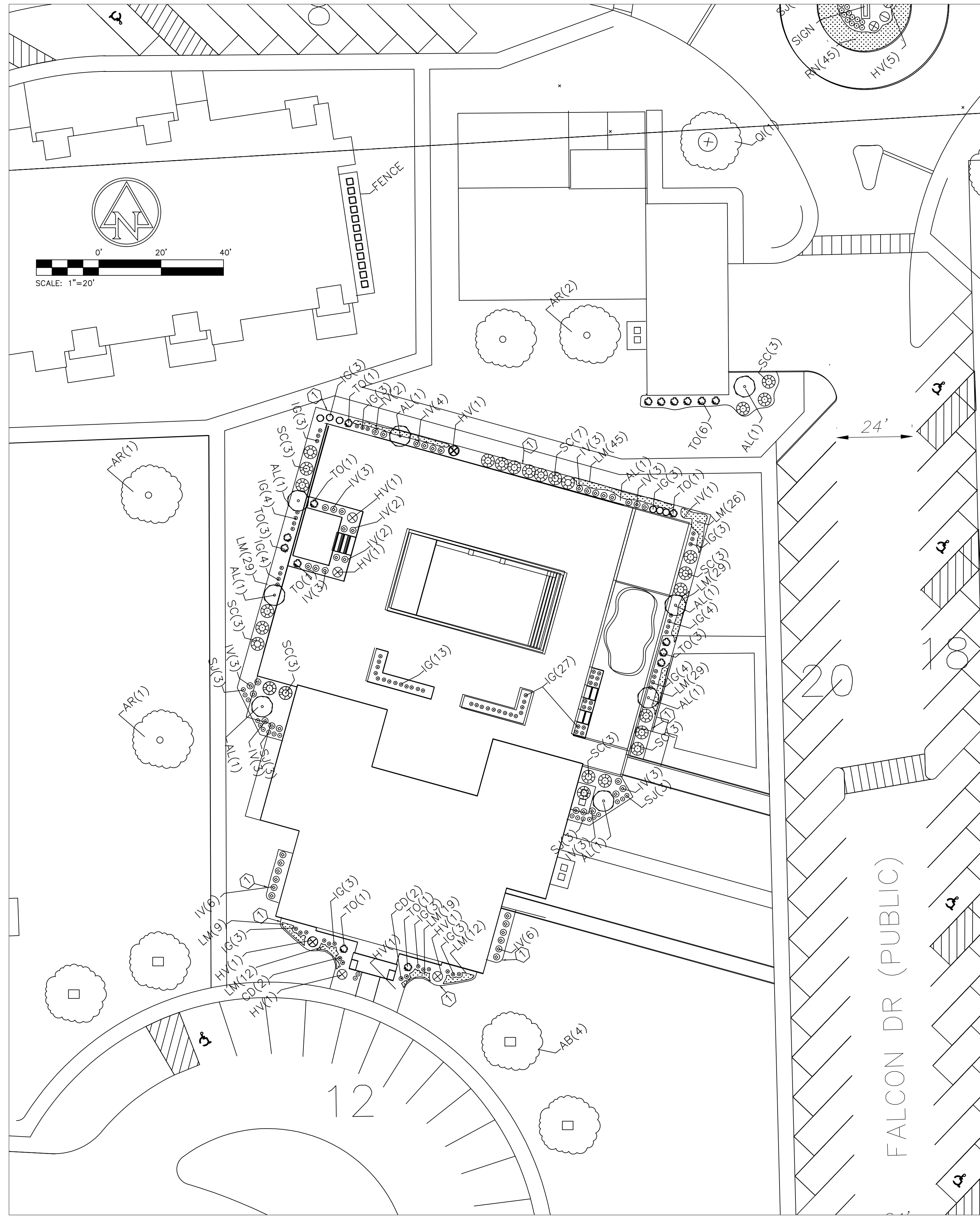
<p>13520 Shakamac Dr. Carmel, IN 46032 317.407.5337 altura@gerdom.com</p> <p><b>Gerdom</b> Engineering</p>
<p>(1) REVISION COMMENTS: SEE (2) REVISION COMMENTS: SEE (3) (4) (5) (6) (7) (8) (9) (10) (11) (12)</p> <p>DRAWING REVISIONS</p>
<p><b>ALTURA</b> Overall Masterplan Layout Plainfield, Indiana</p>
<p>CERTIFIED BY:</p>
<p>DRAWN BY: AHG CHECK BY: AHG DATE: 4-8-2026 COMMISSION NO.:</p>
<p><b>LANDSCAPE PLAN</b></p>
<p><b>L1.1</b></p>



WEST SIDE ENLARGEMENT

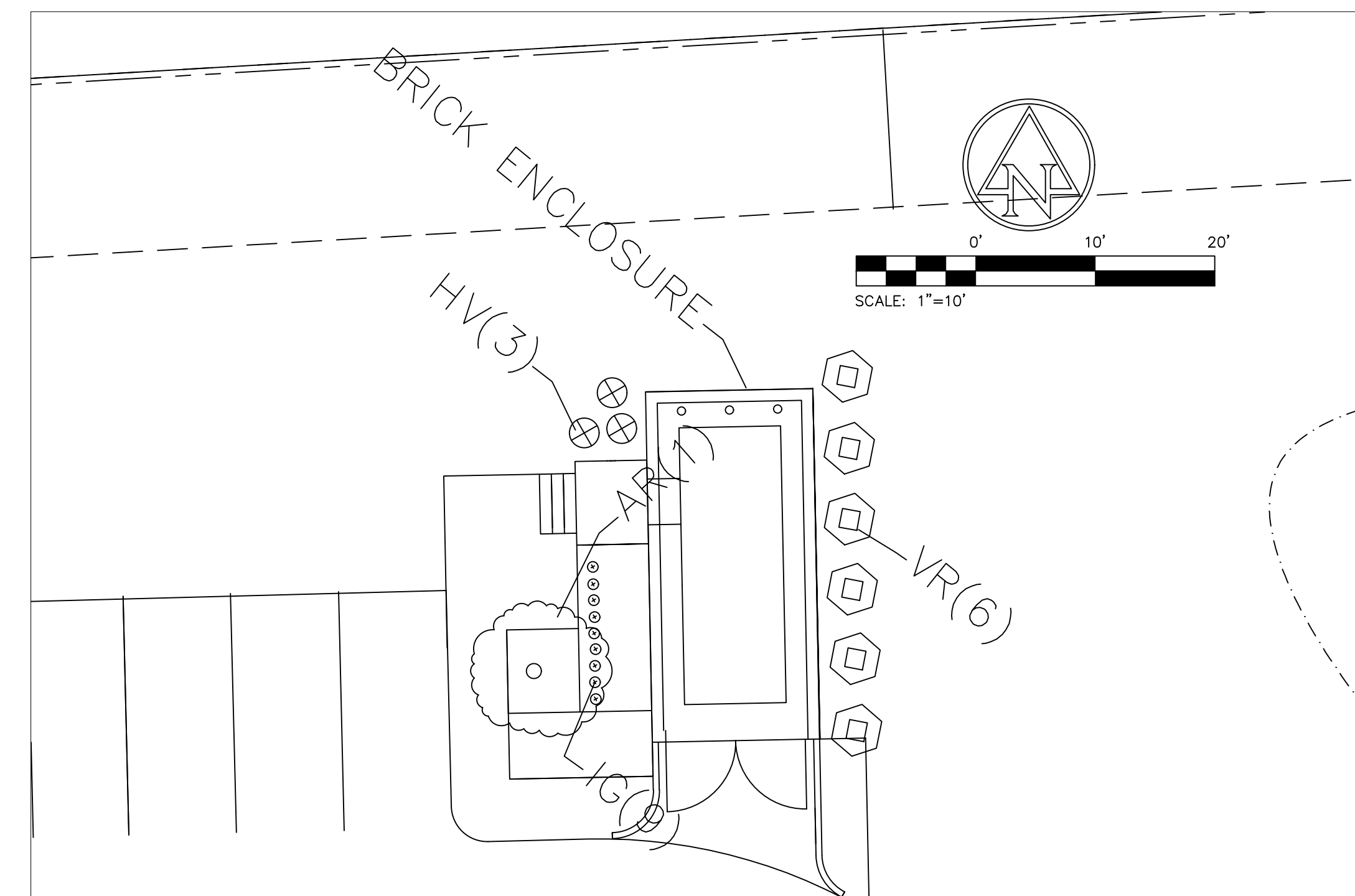
<p style="font-size: small;">13520 Shakamac Dr. Carmel, IN 46032 317-407-5337 andrew.gordom@ghhinc.com</p> <p style="text-align: center;"><b>Gordom</b> Engineering</p>	<table border="1" style="width: 100%; border-collapse: collapse;"> <tr> <td style="font-size: x-small;">(1) REVISION COMMENTS: SEE (2) REVISION COMMENTS: SEE (3) REVISION COMMENTS: SEE (4) (5) (6) (7) (8) (9) (10) (11) (12)</td> </tr> <tr> <td style="font-size: x-small;">DRAWING REVISIONS</td> </tr> </table>	(1) REVISION COMMENTS: SEE (2) REVISION COMMENTS: SEE (3) REVISION COMMENTS: SEE (4) (5) (6) (7) (8) (9) (10) (11) (12)	DRAWING REVISIONS
(1) REVISION COMMENTS: SEE (2) REVISION COMMENTS: SEE (3) REVISION COMMENTS: SEE (4) (5) (6) (7) (8) (9) (10) (11) (12)			
DRAWING REVISIONS			
<h2 style="margin: 0;">ALTURA</h2> <h3 style="margin: 0;">Overall Masterplan Layout Plainfield, Indiana</h3>			
CERTIFIED BY:			
DRAWN BY: AHG CHECK BY: AHG DATE: 4-8-2026 COMMISSION NO.:			
<p style="margin: 0;"><b>LANDSCAPE PLAN</b></p> <p style="margin: 0; font-size: large;"><b>L1.2</b></p>			





CLUBHOUSE/POOL ENLARGEMENT

PLANT SCHEDULE						
Category	Key	Botanical Name	Common Name	Size	Spacing	Comments
<b>DECIDUOUS TREES</b>	AR	Acer rubrum 'Frank Jr.'	Redpointe Maple	2" Caliper	AS SHOWN	45'H x 30'W
	AL	Amelanchier Autumn Brilliance	Autumn Brilliance Serviceberry	2" Caliper	AS SHOWN	25'H x 25'W
	GT	Gleditsia triacanthos skyline	skyline Honey Locust	2" Caliper	AS SHOWN	45'H x 20'W
	LT	Liriodendron tulipifera	Tulip Poplar	2" Caliper	AS SHOWN	75'H x 40'W
	PA	Platanus x acerifolia 'Morton Circle'	London Plane Tree	2" Caliper	AS SHOWN	60'H x 45'W
	PO	Platanus occidentalis	American Sycamore	2" Caliper	AS SHOWN	85'H x 85'W
	QI	Quercus imbricaria	Shingle Oak	2" Caliper	AS SHOWN	50'H x 50'W
	QP	Quercus bicolor	Swamp White Oak	2" Caliper	AS SHOWN	60'H x 50'W
	TD	Taxodium distichum	Bald Cypress	2" Caliper	AS SHOWN	60'H x 25'W
	ZS	Zelkova serrata 'Green Vase'	Japanese Zelkova	2" Caliper	AS SHOWN	70'H x 45'W
<b>Evergreen Trees</b>	CH	Picea aloues	Norway Spruce	6' Tall	AS SHOWN	60'H x 25'W
	PS	Thuja plicata Green Giant	Green Giant Arborvitae	6' Tall	AS SHOWN	50'H x 12'W
<b>Ornamental Trees</b>	AB	Acer palmatum 'Bloodgood'	Japanese Maple	5' Tall	AS SHOWN	15'H x 15'W
	CC	Cercis canadensis	Eastern Redbud	2" Caliper	AS SHOWN	20'H x 20'W
	CF	Magnolia 'Ann'	Ann Magnolia	6' Clump	AS SHOWN	30'H x 20'W
	CV	Crataegus viridis 'Winter King'	Hawthorn	2" Caliper	AS SHOWN	25'H x 25'W
	SR	Syringa reticulata 'Ivory Silk'	Japanese Lilac	2" Caliper	AS SHOWN	20'H x 15'W
<b>Large Shrubs</b>	AP	Aesculus parviflora	Bottle Brush Buckeye	No. 5 Container	AS SHOWN	10'H x 10'W
	MP	Myrica pensylvanica	Northern Bayberry	No. 5 Container	AS SHOWN	8'H x 8'W
	PO	Gingerwine	Gingerwine	No. 5 Container	AS SHOWN	7'H x 5'W
	SC	Prunus laurocerasus	Cherry Laurel	No. 3 Container	AS SHOWN	8'H x 8'W
	VB	Viburnum burkwoodii	Viburnum	No. 5 Container	AS SHOWN	8'H x 8'W
	VR	Viburnum rhytidophyllum	Leatherleaf Viburnum	No. 5 Container	AS SHOWN	8'H x 8'W
<b>Shrubs</b>	AM	Aronia melanocarpa	Chokecherry	No. 2 Container	AS SHOWN	3'H x 3'W
	CA	Calliocalpa americana	Beautyberry	No. 3 Container	AS SHOWN	4'H x 4'W
	CD	Cephalotaxus harringtonia	Plum Yew	No. 3 Container	AS SHOWN	3'H x 3'W
	CP	Cornus alba	Dogwood	No. 5 Container	AS SHOWN	6'H x 6'W
	HA	Hydrangea arborescens 'Annabelle'	Annabelle Hydrangea	No. 3 Container	AS SHOWN	4'H x 4'W
	HV	Hydrangea paniculata	Little Quick Fire Hydrangea	No. 3 Container	AS SHOWN	5'H x 5'W
	IG	Buxus 'Green Gem'	Green Gen Boxwood	No. 3 Container	AS SHOWN	4'H x 4'W
	IV	Itea virginica 'Sprich'	Little Henry Sweetpire	No. 3 Container	AS SHOWN	3'H x 4'W
	SJ	Spirea japonica 'Little Princess'	Little Princess Japanese Spirea	No. 2 Container	AS SHOWN	2'H x 3'W
	TO	Thuja occidentalis 'Emerald'	Emerald Arborvitae	6' Tall	AS SHOWN	12'H x 4'W
<b>Groundcover</b>	LB	Liriope muscari	Lilyturf	SP4	12" O.C.	1.5'H x 1.5'W
	LM	Liriope muscari var.	Variegated Lilyturf	SP4	12" O.C.	1.5'H x 1.5'W
	HM	Hakonechloa macra	Japanese Forest Grass	No. 1 Container	AS SHOWN	1.5'(H) x 1.5'(W)
	HP	Hosta 'Paul's Glory'	Paul's Glory Hosta 1	No. 2 Container	AS SHOWN	2'(H) x 3'(W)
	KF	Calamagrostis x acutiflora 'Karl Foerster'	Karl Foerster Feather Reed Grass	No. 1 Container	AS SHOWN	5'(H) x 3'(W)
	LB	Liriope muscari 'Big Blue'	Big Blue Lilyturf	No. SP4 Container	12" O.C.	1.5'(H) x 1.5'(W)
	LM	Liriope muscari 'Variegata'	Variegated Lilyturf	No. SP4 Container	12" O.C.	1.5'(H) x 1.5'(W)
	MS	Panicum virgatum shenadoah	Switchgrass Shenandoah	No. 3 Container	AS SHOWN	3'(H) x 3'(W)
PV	Panicum virgatum 'Northwind'	Northwind Switchgrass	No. 3 Container	AS SHOWN	4'(H) x 2.5'(W)	
RA	Red Drift	Red Drift	No. 2 Container	24" O.C.	2'(H) x 2'(W)	



DUMPSTER ENLARGEMENT

13520 Shakamac Dr.  
Carmel, IN 46032  
317-407-5337  
info@gerdorm.com

**Gerdorm**  
Engineering

(1) REVISION COMMENTS: 3-24	(12)
(2)	(11)
(3)	(10)
(4)	(9)
(5)	(8)
(6)	(7)
(7)	(6)
(8)	(5)
(9)	(4)
(10)	(3)
(11)	(2)
(12)	(1)

DRAWING REVISIONS

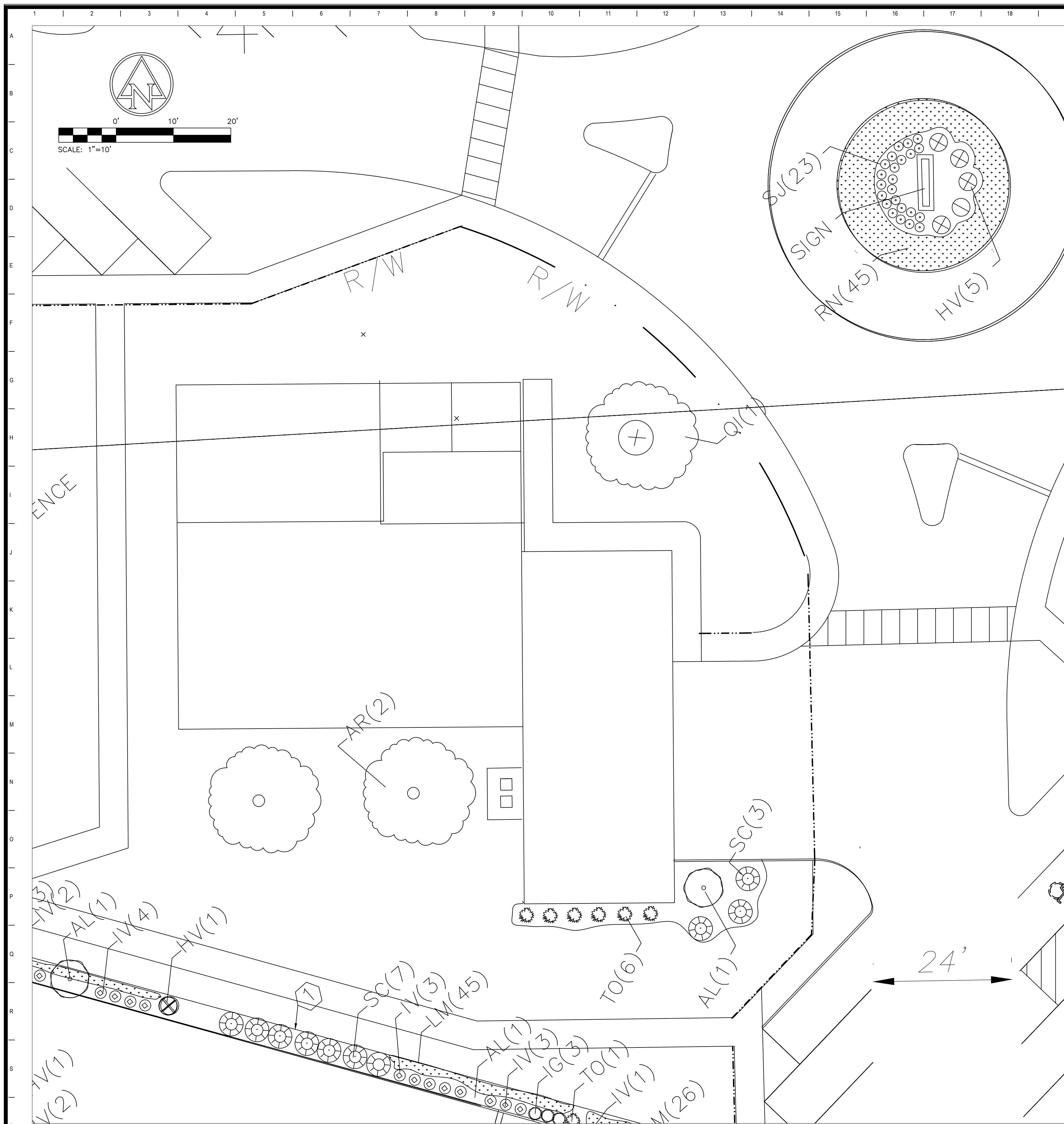
ALTURA  
Overall Masterplan Layout  
Plainfield, Indiana

CERTIFIED BY:

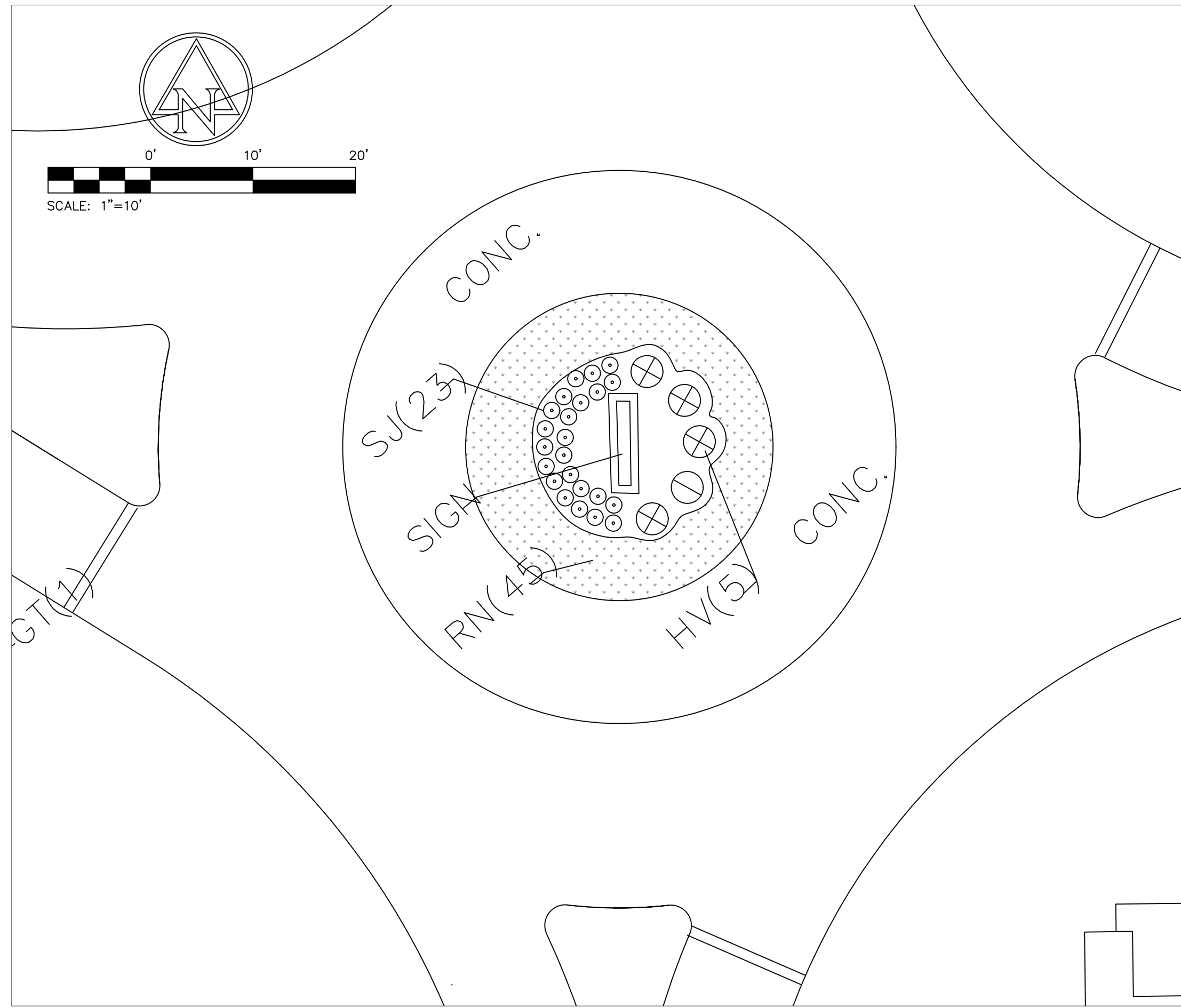
DRAWN BY: AHG  
CHECK BY: AHG  
DATE: 4-8-2026  
COMMISSION NO.:

**LANDSCAPE PLAN**

**L1.4**



MAINTENANCE/CAR WASH/DOG PARK



TYPICAL ROUNDABOUT LANDSCAPE

(1) REVISION COMMENTS  
(2) REVISION COMMENTS  
(3) REVISION COMMENTS  
(4)  
(5)  
(6)  
(7)  
(8)  
(9)  
(10)  
(11)  
(12)

DRAWING REVISIONS

ALTURA  
Overall Masterplan Layout  
Plainfield, Indiana

CERTIFIED BY:

DRAWN BY: AHG  
CHECK BY: AHG  
DATE: 4-8-2026  
COMMISSION NO.:

LANDSCAPE  
PLAN

L1.5



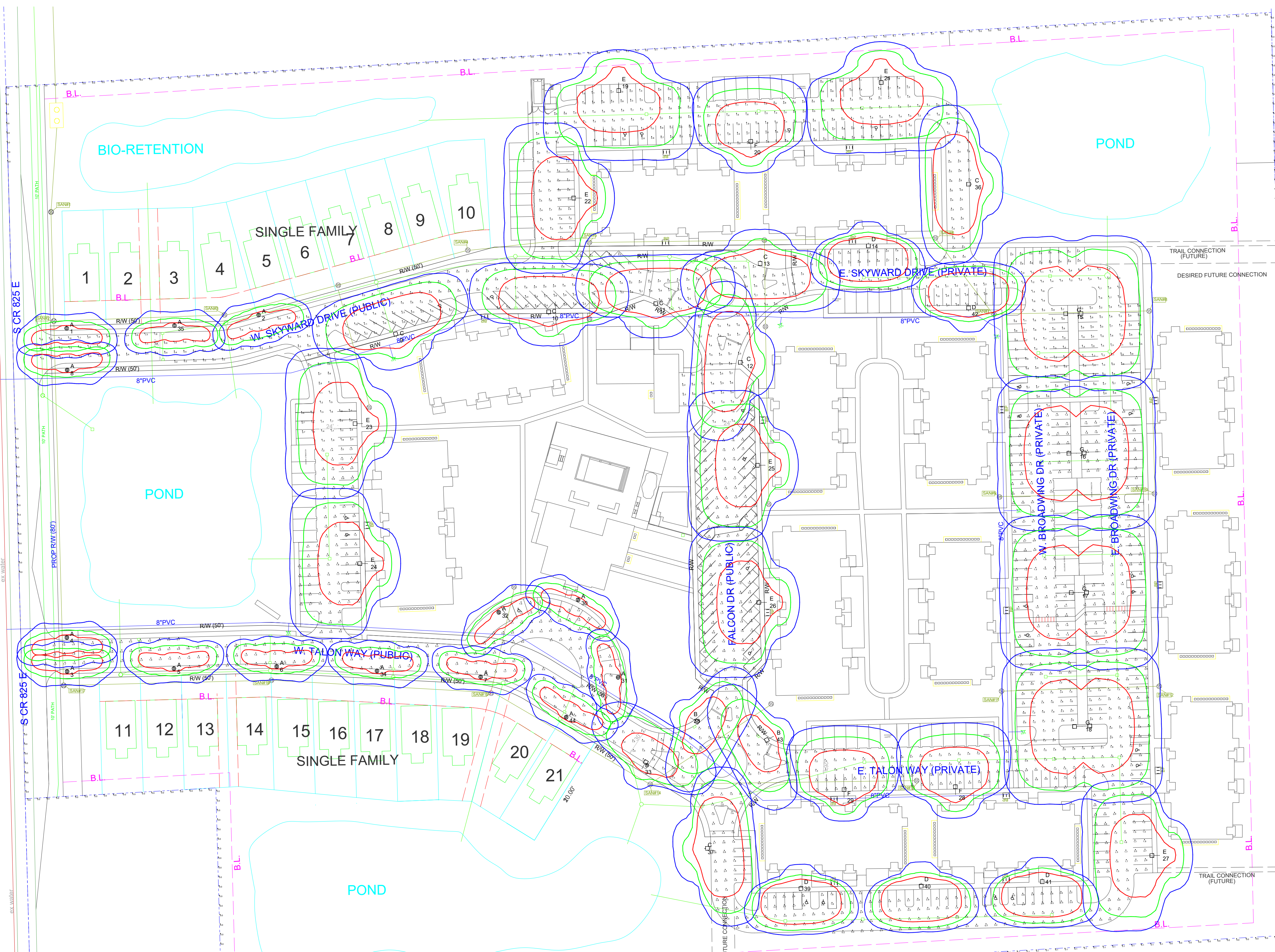
**Outdoor Lighting Solutions  
Midwest**

Lighting Design Tolerances: Calculated for design purposes. Design tolerances are predicted values and are based on specific information that has been supplied to Duke Energy. Any inaccuracies in the supplied information, inaccuracies in luminaire installation, lighted area geometry including elevation differences, reflective properties of surrounding surfaces, obstructions (foliage or otherwise) in the lighted area, or lighting on scores other than listed in this may affect predicted values. Normal tolerances of voltage, lamp output, and ballast and luminaire manufacturer will also affect results.

Proprietary & Confidential: This document together with the concepts and designs presented herein, are the property of Duke Energy and are intended only for the specific purpose and prospective client as stated in the title block of this drawing. Any use, copying, reproduction or disclosure of the drawing, design or any information contained herein by the prospective customer or other entities, including without limitation, architects, engineers, or equipment manufacturers is hereby expressly prohibited and shall not be permitted absent prior written consent from Duke Energy. Duke Energy disclaims any liability or responsibility for any unauthorized use of or reliance on this document.

**ALTURA APARTMENTS - SITE LIGHTING**  
Plainfield, Indiana

**DESIGNER**  
Tony Dickson  
**DATE**  
4/24/2026  
**SCALE**  
1" = 60 FT  
**DRAWING NO.**  
TD26-0703IN



**Outdoor Lighting**

**MITCHELL TOP-HAT LED**  
LED  
Lighting fixture  
Mounting height: 12'-25'  
Color: Black  
Pole: 6" x 6" x 12'-25'  
Application: Residential, Commercial, Street lighting

**MITCHELL LED**  
LED  
Lighting fixture  
Mounting height: 12'-25'  
Color: Black  
Pole: 6" x 6" x 12'-25'  
Application: Residential, Commercial, Street lighting

**POLE AVAILABLE**  
Mounting height: 12', 15', 20', 25'

**FEATURES**  
Turbidity resistant  
LEDs are maintenance free  
Design services by lighting professionals included  
Maintenance, installation & warranty included  
One low monthly cost per luminaire LED

**BENEFITS**  
Provides best-in-class installation and service  
Free up capital for other projects  
Meets industry standards and lighting performance  
Durable light and mounting support rails  
Convenient and simple for you

**DUKE ENERGY** Outdoor Lighting

**Outdoor Lighting**

**MICRO LED ROADWAY**  
LED  
Lighting fixture  
Mounting height: 12'-25'  
Color: Black  
Pole: 6" x 6" x 12'-25'  
Application: Residential, Commercial, Street lighting

**POLE AVAILABLE**  
Mounting height: 12', 15', 20', 25'

**FEATURES**  
Turbidity resistant  
LEDs are maintenance free  
Design services by lighting professionals included  
Maintenance, installation & warranty included  
One low monthly cost per luminaire LED

**BENEFITS**  
Provides best-in-class installation and service  
Free up capital for other projects  
Meets industry standards and lighting performance  
Durable light and mounting support rails  
Convenient and simple for you

**DUKE ENERGY** Outdoor Lighting

**Outdoor Lighting**

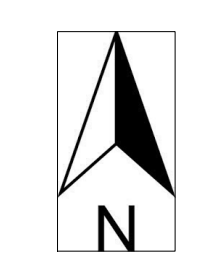
**ROADWAY LED**  
LED  
Lighting fixture  
Mounting height: 12'-25'  
Color: Black  
Pole: 6" x 6" x 12'-25'  
Application: Residential, Commercial, Street lighting

**POLE AVAILABLE**  
Mounting height: 12', 15', 20', 25'

**FEATURES**  
Turbidity resistant  
LEDs are maintenance free  
Design services by lighting professionals included  
Maintenance, installation & warranty included  
One low monthly cost per luminaire LED

**BENEFITS**  
Provides best-in-class installation and service  
Free up capital for other projects  
Meets industry standards and lighting performance  
Durable light and mounting support rails  
Convenient and simple for you

**DUKE ENERGY** Outdoor Lighting



PRELIMINARY

**Photometric Template Coverage**

Luminaire Schedule Symbol	Qty	Label	Description	Color	Arm	LLF	Mounting Height	Arrangement Watts
⊙	14	A	50W LED Mitchell Type III, 3000K with Ribs, Bands and Medallions	Black	0	0.950	12'	45
□	3	B	70W LED Roadway Type III, 3000K - 6' Bracket	Black	6	0.950	25'	65
□	7	C	110W LED Roadway Type III, 3000K - 14" Bracket	Black	1.2	0.950	25'	106
□	5	D	110W LED Roadway Type III, 3000K With House Side Visor - 14" Bracket	Black	1.2	0.950	25'	106
□	8	E	110W LED Roadway Type IV, 3000K - 6' Bracket	Black	6	0.950	25'	106
□	3	F	110W LED Roadway Type IV, 3000K With House Side Visor - 6' Bracket	Black	6	0.950	25'	106
□	4	G	110W LED Roadway Type IV, 3000K - Double 6' Bracket	Black	6	0.950	25'	212

**General Notes:**

- ALL CALCULATIONS TAKEN AT GRADE
- POLES ARE ALUMINUM (STYLE A & D, BLACK IN COLOR) VARYING IN MOUNTING HEIGHT FROM 12-25', DIRECT BURY
- POLE OFFSETS TO BE 2' BACK OF SIDEWALK AND 3' BOC UNLESS OTHERWISE NOTED
- OWNER SHALL BE RESPONSIBLE FOR COORDINATING ANY LANDSCAPE CONFLICTS WITH LANDSCAPE ARCHITECT. OWNER SHALL BE RESPONSIBLE FOR ANY NECESSARY FUTURE TRIMMING OR PRUNING OF PROPOSED LANDSCAPED PLANTING.



Outdoor Lighting Solutions  
Midwest

Lighting Design Tolerances: Calculated for design purposes. Design values are based on specific information that has been supplied to Duke Energy. Any inaccuracies in the supplied information, lighted area geometry including elevation differences, reflective properties of surrounding surfaces, obstructions (foliage or otherwise) in the lighted area, or lighting luminaire scores other than listed in this may affect predicted values. Normal tolerances of voltage, lamp output, and ballast and luminaire manufacturer will also affect results.

Proprietary & Confidential: This document together with the concepts and designs presented herein, are the property of Duke Energy and are intended only for the specific purpose and prospective client as stated in the title block of this drawing. Any use, copying, reproduction or disclosure of the drawing, design or any information contained herein by the prospective customer or other entities, including without limitation architects, engineers, or equipment manufacturers is hereby expressly prohibited and shall not be permitted absent prior written consent from, and payment of a fee to, Duke Energy. Duke Energy disclaims any liability or responsibility for any unauthorized use of or reliance on this document.

# ALTURA APARTMENTS - SITE LIGHTING

Plainfield, Indiana

DESIGNER  
Tony Dickson

DATE  
4/24/2026

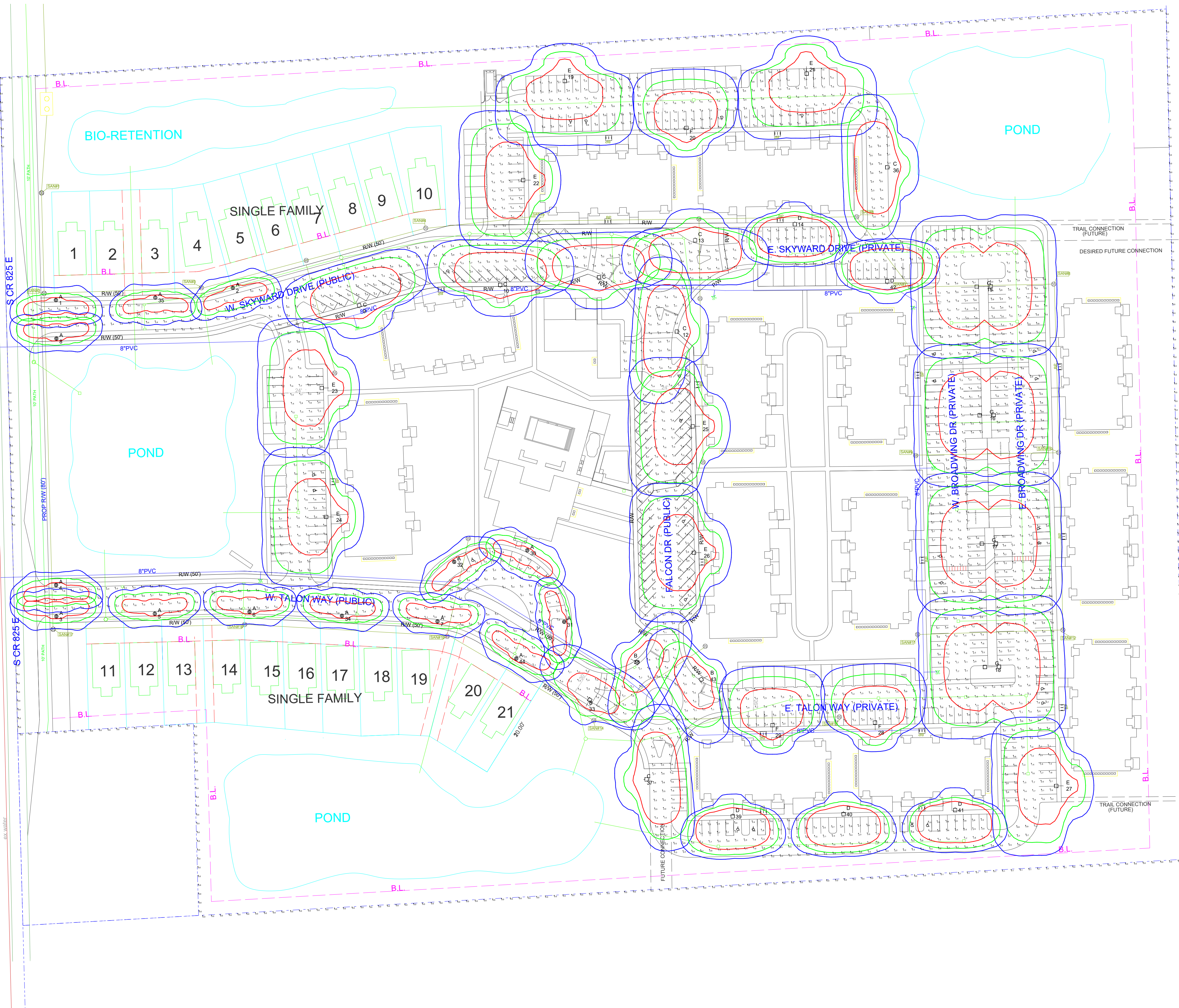
SCALE  
1" = 60FT

DRAWING NO.  
TD26-07031N

Page 2 of 2



PRELIMINARY



### Site Photometry

Calculation Summary - Horizontal at Grade					
Label	Avg	Max	Min	Avg/Min	Max/Min
Property Line	0.01	0.3	0.0	N.A.	N.A.
Site Parking & Drive lanes	1.24	4.5	0.1	12.40	45.00