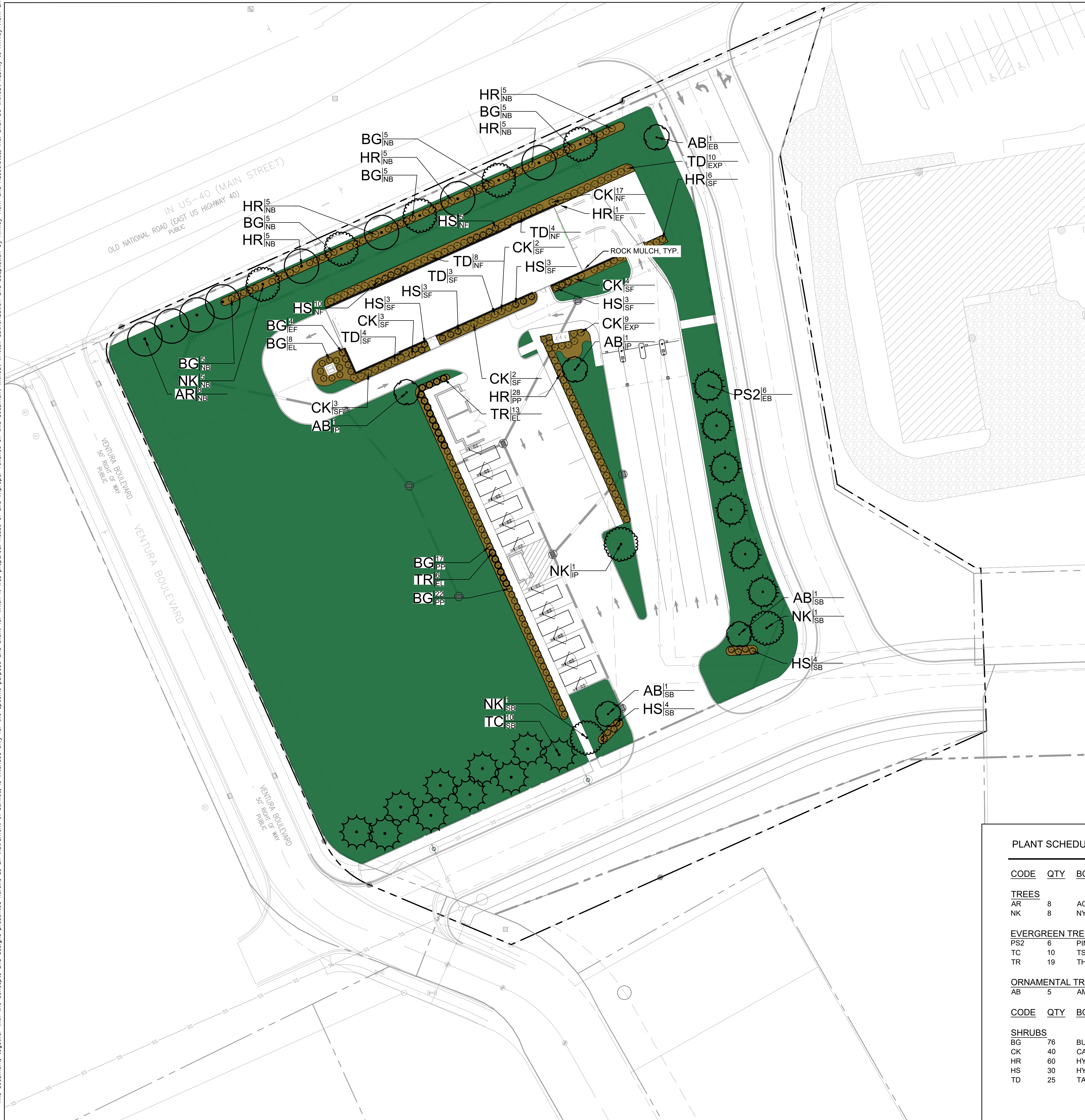


Drawing name: K:\IND\_DEV\17035804\_Crew Carwash\_Ventura Blvd\_Planified.dwg L1.0 Feb 18, 2025 2:00pm by Kaitlin Gougeon  
 This document, together with the concepts and designs presented herein, is intended only for the specific purpose and client for which it was prepared. Reuse of and improper reliance on this document without written authorization and adaptation by Kimley-Horn and Associates, Inc. shall be without liability to Kimley-Horn and Associates, Inc.



### LABEL LEGEND

PLANT ABBREVIATION  
 QUANTITY  
 CODE REQUIREMENT (REFER TO ORDINANCE CHART)

XX<sup>X</sup>/<sub>XX</sub>

### SODDING LEGEND

PERMANENT SODDING  
 KENTUCKY BLUE GRASS SOD

NOTES:

- TILL SOD TO 6" DEPTH BEFORE PLACING SOD.
- EDGES TO BE TIGHT AGAINST ADJACENT ROLL WITHOUT GAPS OR OVERLAP.
- STAGGER JOINTS
- WATER THOROUGHLY DURING AND IMMEDIATELY AFTER INSTALL.
- WHEN LAYING SOD, INCLUDE STARTER FERTILIZER

### STONE MULCH LEGEND

RIVER ROCK  
 3" - 1 1/2" DIA. APPLY AT A 3" DEPTH ON TOP OF 60Z. NON-WOVEN GEOTEXTILE FABRIC

### MULCHING LEGEND

MULCH  
 HARDWOOD SHREDDED MULCH, NATURAL BROWN COLOR

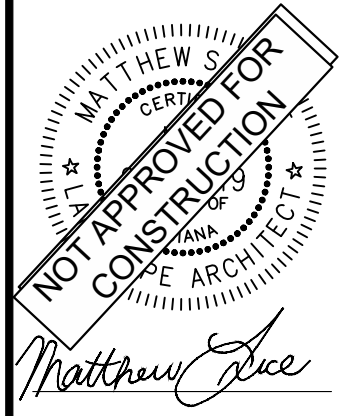
PLANT SCHEDULE

CODE	QTY	BOTANICAL NAME	COMMON NAME	CONT	CAL	HT
<b>TREES</b>						
AR	8	ACER RUBRUM	RED MAPLE	B & B	4" CAL MIN	
NK	8	NYSSA SYLVATICA 'GREEN GABLE™'	GREEN GABLE™ BLACK GUM	B & B	4" CAL MIN	
<b>EVERGREEN TREES</b>						
PS2	6	PINUS STROBUS	WHITE PINE	B & B		6' HT MIN
TC	10	TSUGA CANADENSIS	EASTERN HEMLOCK	B & B		6' HT MIN
TR	19	THUJA OCCIDENTALIS 'EMERALD GREEN'	EMERALD GREEN ARBORVITAE	B & B		6' HT MIN
<b>ORNAMENTAL TREES</b>						
AB	5	AMELANCHIER CANADENSIS 'AUTUMN BRILLIANCE'	CANADIAN SERVICEBERRY	B & B	1.5" CAL MIN	
<b>SHRUBS</b>						
BG	76	BUXUS X 'GREEN VELVET'	GREEN VELVET BOXWOOD	---		36" HT MIN
CK	40	CALAMAGROSTIS X ACUTIFLORA 'KARL FOERSTER'	KARL FOERSTER FEATHER REED GRASS	---		24" HT MIN
HR	60	HYDRANGEA PANICULATA 'BOBO'	PANICLE HYDRANGEA	---		36" HT MIN
HS	30	HYDRANGEA PANICULATA 'BOKRATHIRTEEN'	SWEET SUMMER PANICLE HYDRANGEA	---		24" HT MIN
TD	25	TAXUS X MEDIA	ANGLO-JAPANESE YEWE	---		24" HT MIN

NO.	REVISIONS	DATE	BY

**Kimley-Horn**  
 6026 KIMLEY-HORN AND ASSOCIATES, INC.  
 500 EAST 96TH STREET, SUITE 300,  
 INDIANAPOLIS, IN 46240  
 WWW.KIMLEY-HORN.COM

SCALE: AS NOTED  
 DESIGNED BY: NRS  
 DRAWN BY: M.F.  
 CHECKED BY: NRS



**LANDSCAPE PLAN**

**CREW CARWASH  
 US 40 & VENTURA BLVD.  
 PLAINFIELD IN 46168**

ORIGINAL ISSUE:  
 10/23/2025  
 KHA PROJECT NO.  
 170358043

SHEET NUMBER  
**L1.0**