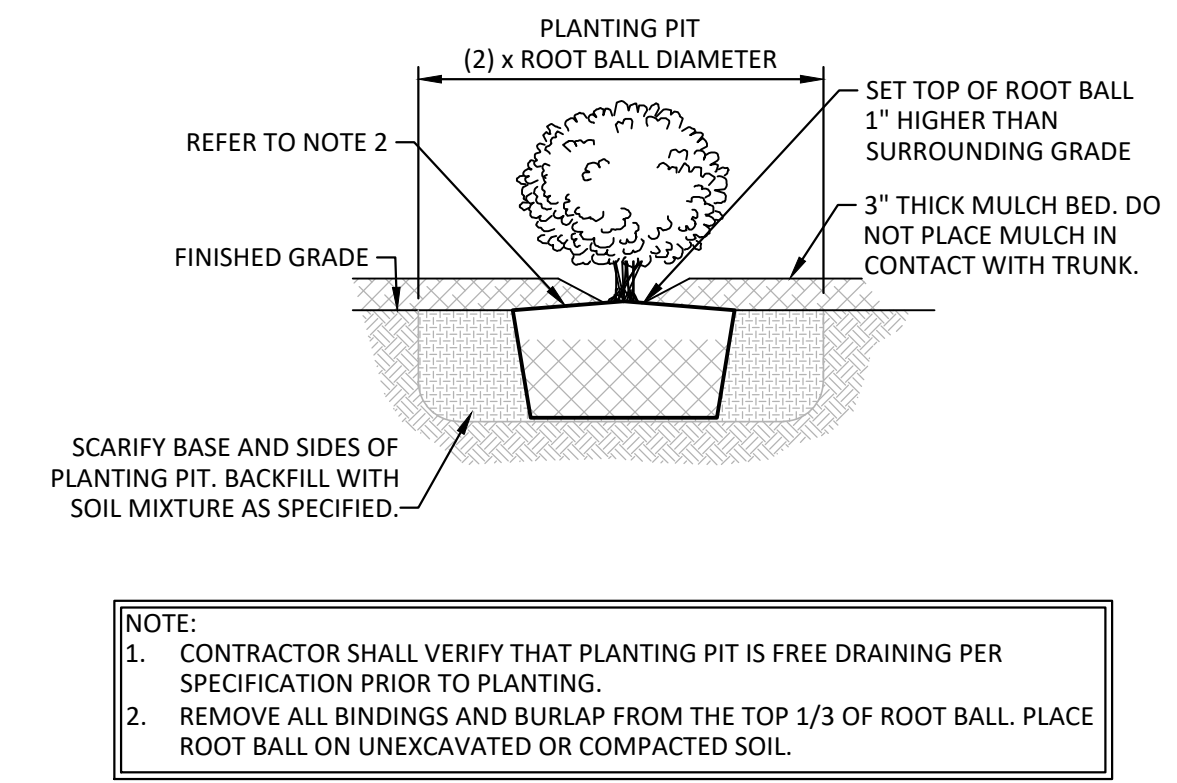


NUMBER	DATE	DESCRIPTION

SITE LANDSCAPE DETAILS

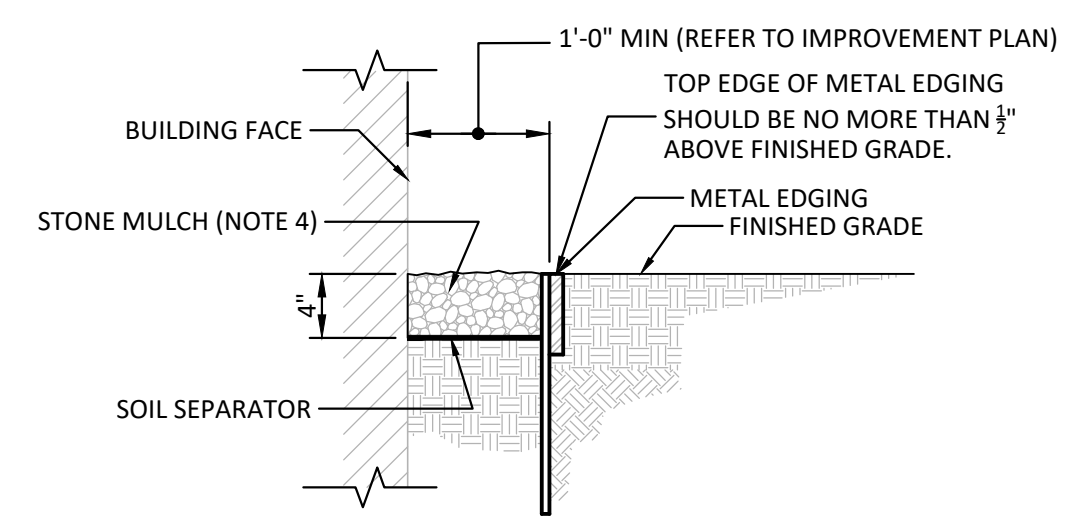
SCALE: AS NOTED
 DATE: 09 MAY 2025
 PROJECT #: 24JPC91
 DRAWN: TPJ
 COORD: RKF
 APPROVED: ADS

C610



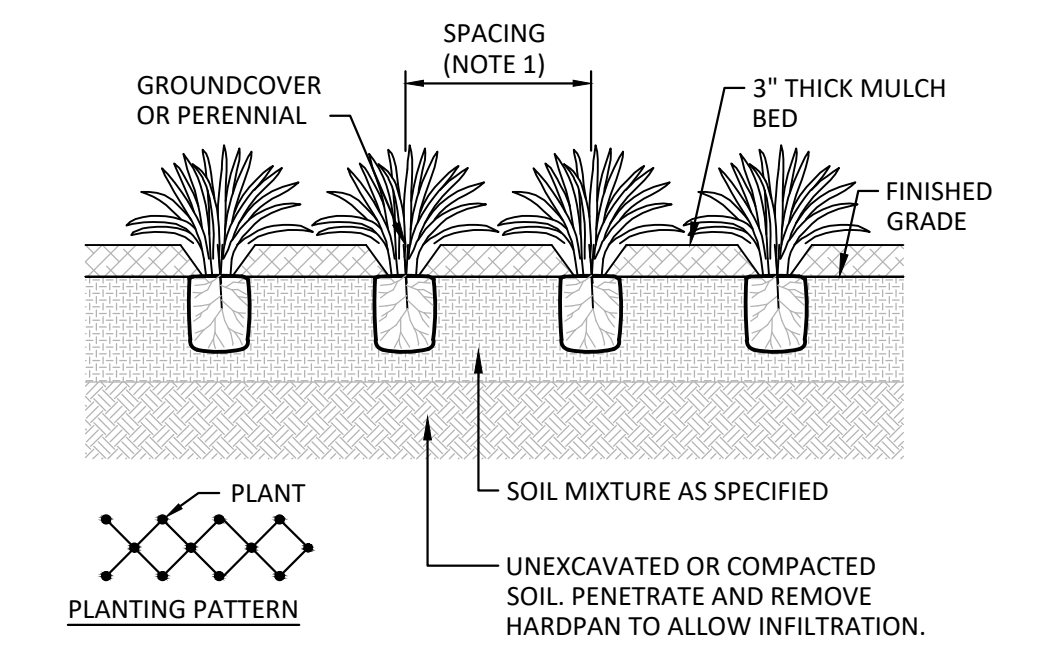
NOTE:
 1. CONTRACTOR SHALL VERIFY THAT PLANTING PIT IS FREE DRAINING PER SPECIFICATION PRIOR TO PLANTING.
 2. REMOVE ALL BINDINGS AND BURLAP FROM THE TOP 1/3 OF ROOT BALL. PLACE ROOT BALL ON UNEXCAVATED OR COMPACTED SOIL.

4 SHRUB PLANTING DETAIL
 NO SCALE



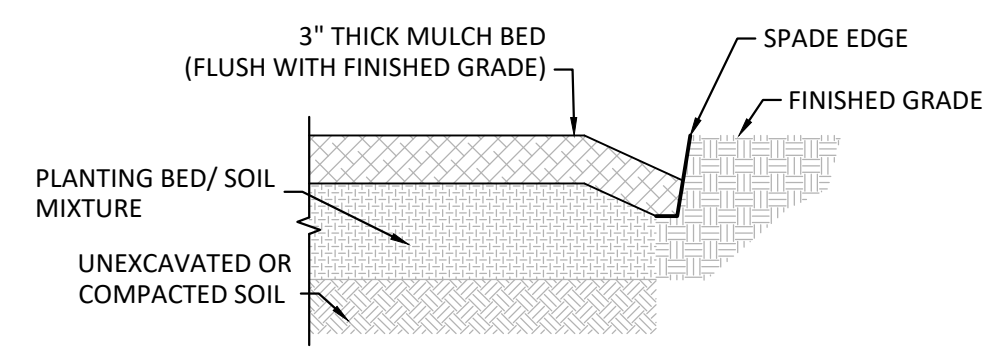
NOTE:
 1. INSTALL METAL EDGING WITH STAKE POCKETS ON INSIDE OF BED.
 2. REFER TO SPECIFICATIONS FOR SOIL SEPARATOR AND EDGING REQUIREMENTS.
 3. METAL EDGING SHALL BE FLUSH WITH FINISHED GRADE. COMPACT BACKFILL ALONG EDGING TO ASSURE THAT EDGE IS FLUSH.
 4. STONE SHALL BE 1"-1 1/2" WASHED, UNCRUSHED SMOOTH RIVER GRAVEL.

6 STONE MULCH DETAIL
 NO SCALE



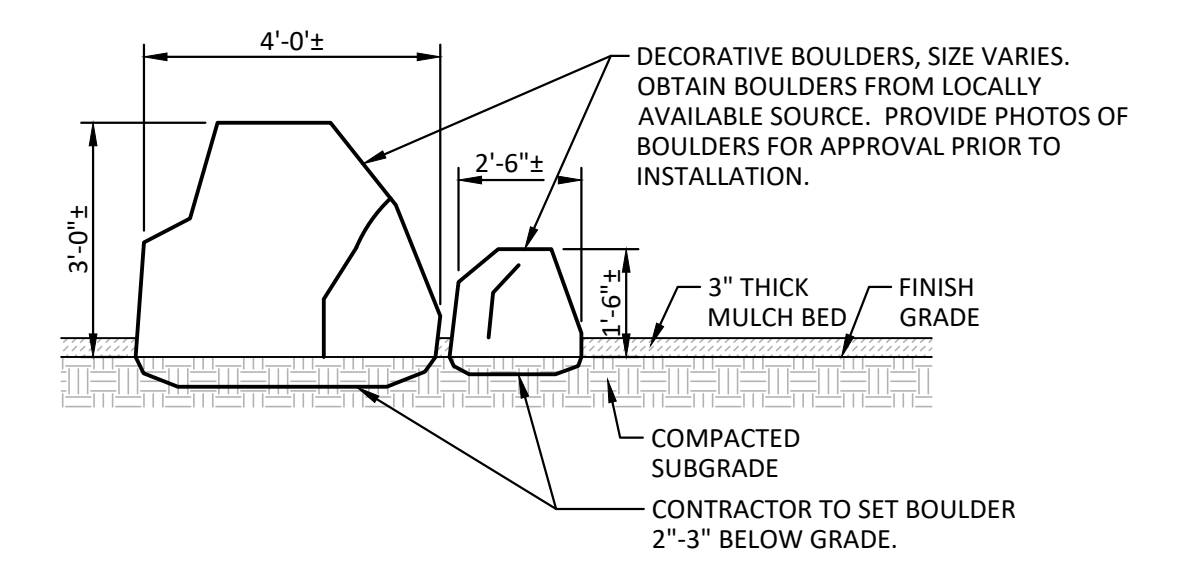
NOTE:
 1. PLANT IN DIAGONAL PLANTING PATTERN. REFER TO PLANT LIST FOR SPACING REQUIREMENTS.
 2. REFER TO PLANT LIST FOR GROUNDCOVER OR PERENNIAL TYPE.

3 GROUNDCOVER / PERENNIAL PLANTING DETAIL
 NO SCALE

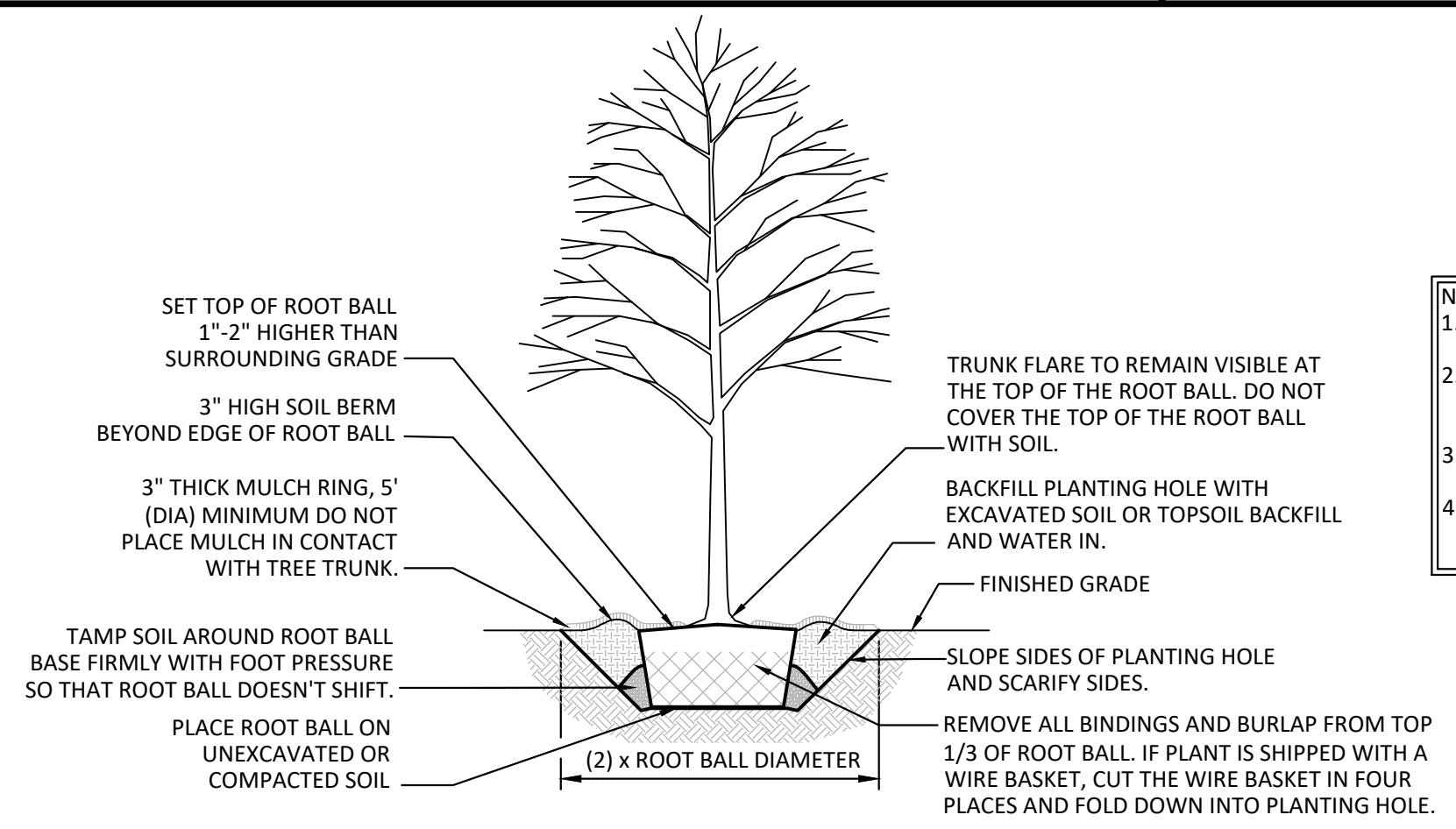


NOTES:
 1. SPADE EDGE SHALL CREATE A CLEAN SEPARATION BETWEEN AREAS USING SMOOTH EVEN LINES AS INDICATED ON THE PLANS.
 2. REFER TO SPECIFICATIONS FOR MULCH AND SOIL MIXTURE REQUIREMENTS.
 3. CUT TO A MINIMUM DEPTH OF 4 INCHES.

5 SPADE EDGE DETAIL
 NO SCALE



2 BOULDER DETAIL
 NO SCALE



NOTES:
 1. CONTRACTOR SHALL VERIFY THAT PLANTING HOLE IS FREE DRAINING PER SPECIFICATION PRIOR TO PLANTING.
 2. DO NOT HEAVILY PRUNE THE TREE AT PLANTING. PRUNE ONLY CROSSOVER LIMBS, CO-DOMINANT LEADERS, AND BROKEN OR DEAD BRANCHES. LEAVE MAIN LEADER INTACT.
 3. MARK THE NORTH SIDE OF THE TREE IN THE NURSERY, AND ROTATE TREE TO FACE NORTH.
 4. STAKE AND GUY TREE PER SPECIFICATIONS ONLY IF DEEMED NECESSARY BY LANDSCAPE ARCHITECT IN THE FIELD.

1 DECIDUOUS TREE PLANTING DETAIL
 NO SCALE