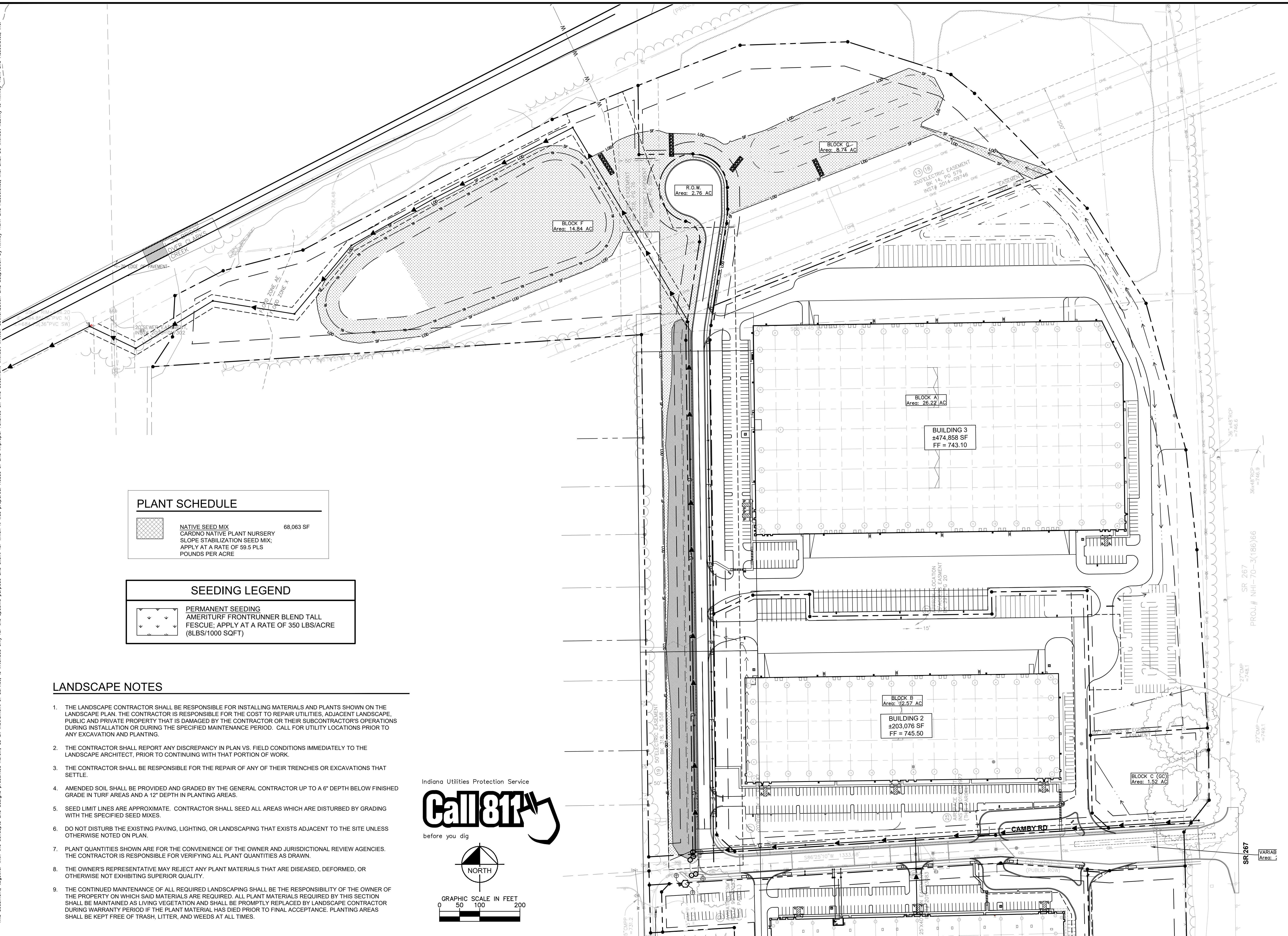
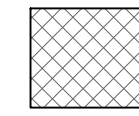
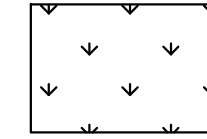


Drawing name: K:\IND\_DEV\170018018\_0000\_PFP\_Building-2\_Planned\_INZ\_Design\CAD\PlanSheets\Public\_Infrastructure\L1.0 - LANDSCAPE PLAN.dwg L1.0 Jan 14, 2021 5:59pm by LemSawyer  
 This document, together with the concepts and designs presented herein, is intended only for the specific purpose and client for which it was prepared. Reuse of and improper reliance on this document without written authorization and adaptation by Kimley-Horn and Associates, Inc. shall be without liability to Kimley-Horn and Associates, Inc.



PLANT SCHEDULE	
	NATIVE SEED MIX 68,063 SF CARDNO NATIVE PLANT NURSERY SLOPE STABILIZATION SEED MIX; APPLY AT A RATE OF 59.5 PLS POUNDS PER ACRE

SEEDING LEGEND	
	PERMANENT SEEDING AMERITURF FRONTRUNNER BLEND TALL FESCUE; APPLY AT A RATE OF 350 LBS/ACRE (8LBS/1000 SQFT)

**LANDSCAPE NOTES**


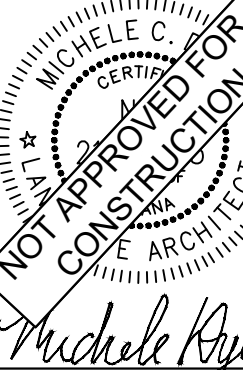
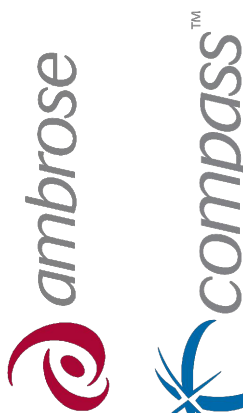
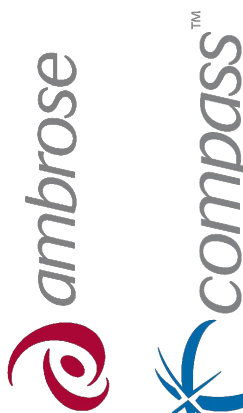
1. THE LANDSCAPE CONTRACTOR SHALL BE RESPONSIBLE FOR INSTALLING MATERIALS AND PLANTS SHOWN ON THE LANDSCAPE PLAN. THE CONTRACTOR IS RESPONSIBLE FOR THE COST TO REPAIR UTILITIES, ADJACENT LANDSCAPE, PUBLIC AND PRIVATE PROPERTY THAT IS DAMAGED BY THE CONTRACTOR OR THEIR SUBCONTRACTOR'S OPERATIONS DURING INSTALLATION OR DURING THE SPECIFIED MAINTENANCE PERIOD. CALL FOR UTILITY LOCATIONS PRIOR TO ANY EXCAVATION AND PLANTING.
2. THE CONTRACTOR SHALL REPORT ANY DISCREPANCY IN PLAN VS. FIELD CONDITIONS IMMEDIATELY TO THE LANDSCAPE ARCHITECT, PRIOR TO CONTINUING WITH THAT PORTION OF WORK.
3. THE CONTRACTOR SHALL BE RESPONSIBLE FOR THE REPAIR OF ANY OF THEIR TRENCHES OR EXCAVATIONS THAT SETTLE.
4. AMENDED SOIL SHALL BE PROVIDED AND GRADED BY THE GENERAL CONTRACTOR UP TO A 6" DEPTH BELOW FINISHED GRADE IN TURF AREAS AND A 12" DEPTH IN PLANTING AREAS.
5. SEED LIMIT LINES ARE APPROXIMATE. CONTRACTOR SHALL SEED ALL AREAS WHICH ARE DISTURBED BY GRADING WITH THE SPECIFIED SEED MIXES.
6. DO NOT DISTURB THE EXISTING PAVING, LIGHTING, OR LANDSCAPING THAT EXISTS ADJACENT TO THE SITE UNLESS OTHERWISE NOTED ON PLAN.
7. PLANT QUANTITIES SHOWN ARE FOR THE CONVENIENCE OF THE OWNER AND JURISDICTIONAL REVIEW AGENCIES. THE CONTRACTOR IS RESPONSIBLE FOR VERIFYING ALL PLANT QUANTITIES AS DRAWN.
8. THE OWNER'S REPRESENTATIVE MAY REJECT ANY PLANT MATERIALS THAT ARE DISEASED, DEFORMED, OR OTHERWISE NOT EXHIBITING SUPERIOR QUALITY.
9. THE CONTINUED MAINTENANCE OF ALL REQUIRED LANDSCAPING SHALL BE THE RESPONSIBILITY OF THE OWNER OF THE PROPERTY ON WHICH SAID MATERIALS ARE REQUIRED. ALL PLANT MATERIALS REQUIRED BY THIS SECTION SHALL BE MAINTAINED AS LIVING VEGETATION AND SHALL BE PROMPTLY REPLACED BY LANDSCAPE CONTRACTOR DURING WARRANTY PERIOD IF THE PLANT MATERIAL HAS DIED PRIOR TO FINAL ACCEPTANCE. PLANTING AREAS SHALL BE KEPT FREE OF TRASH, LITTER, AND WEEDS AT ALL TIMES.

Indiana Utilities Protection Service



before you dig



 ©2021 KIMLEY-HORN AND ASSOCIATES, INC. 250 EAST 96TH STREET, SUITE 580, INDIANAPOLIS, IN 46240 WWW.KIMLEY-HORN.COM	AS NOTED DESIGNED BY: LDS DRAWN BY: ANN CHECKED BY: BAS	NOT APPROVED FOR CONSTRUCTION  1/14/2021	 	<b>OVERALL LANDSCAPE PLAN</b>	<b>PLAINFIELD LOGISTICS PARK PUBLIC INFRASTRUCTURE</b> PLAINFIELD, IN 46168	ORIGINAL ISSUE: FEBRUARY 3, 2021 KHA PROJECT NO. 170018009 SHEET NUMBER <b>L1.0</b>	REVISIONS NO. DATE BY
--	--	--	--	-----------------------------------	--	--	--------------------------