

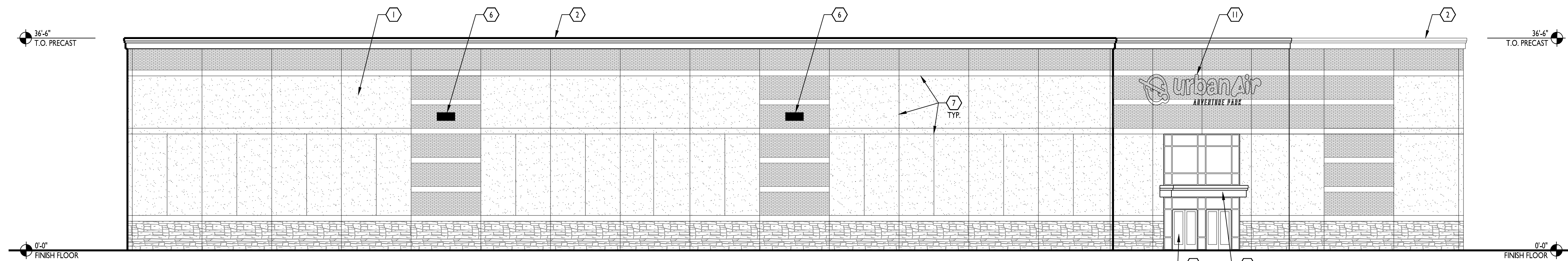
KEYED NOTES

1. PRE-CAST CONCRETE PANEL WITH FINISHES AS INDICATED
2. 18" TALL APPLIED PREFINISHED METAL CORNICE AND COPING BY METAL-ERA (OR EQUAL), COLOR TO BE SLATE GREY.
3. INSULATED HM MAN-DOOR AD FRAME. PAINTED TO MATCH WALL COLOR.
4. INSULATED STEEL OVERHEAD DOOR, PRE-FINISHED WHITE.
5. SCUPPER AND DOWNSPOUT, COLOR TO MATCH SLATE GREY BY METAL-ERA, OR EQUAL.
6. WALL PACK FIXTURE, CENTER ON WIDTH OF PANEL. HORIZONTALLY AND BETWEEN REVEALS VERTICALLY. REFER TO ELECTRICAL DRAWINGS FOR INFORMATION.
7. TYPICAL REVEAL.
8. CANOPY, REFER TO WALL SECTIONS. COLOR TO MATCH SLATE GREY BY METAL-ERA, OR EQUAL.
9. OUTLINE OF ROOF AND RTUs.
10. ALUMINUM STOREFRONT ENTRANCE SYSTEM WITH INSULATED AND TINTED GLAZING.
11. SIGNAGE, COORDINATE WITH SIGN VENDOR.



CURRAN
ARCHITECTURE

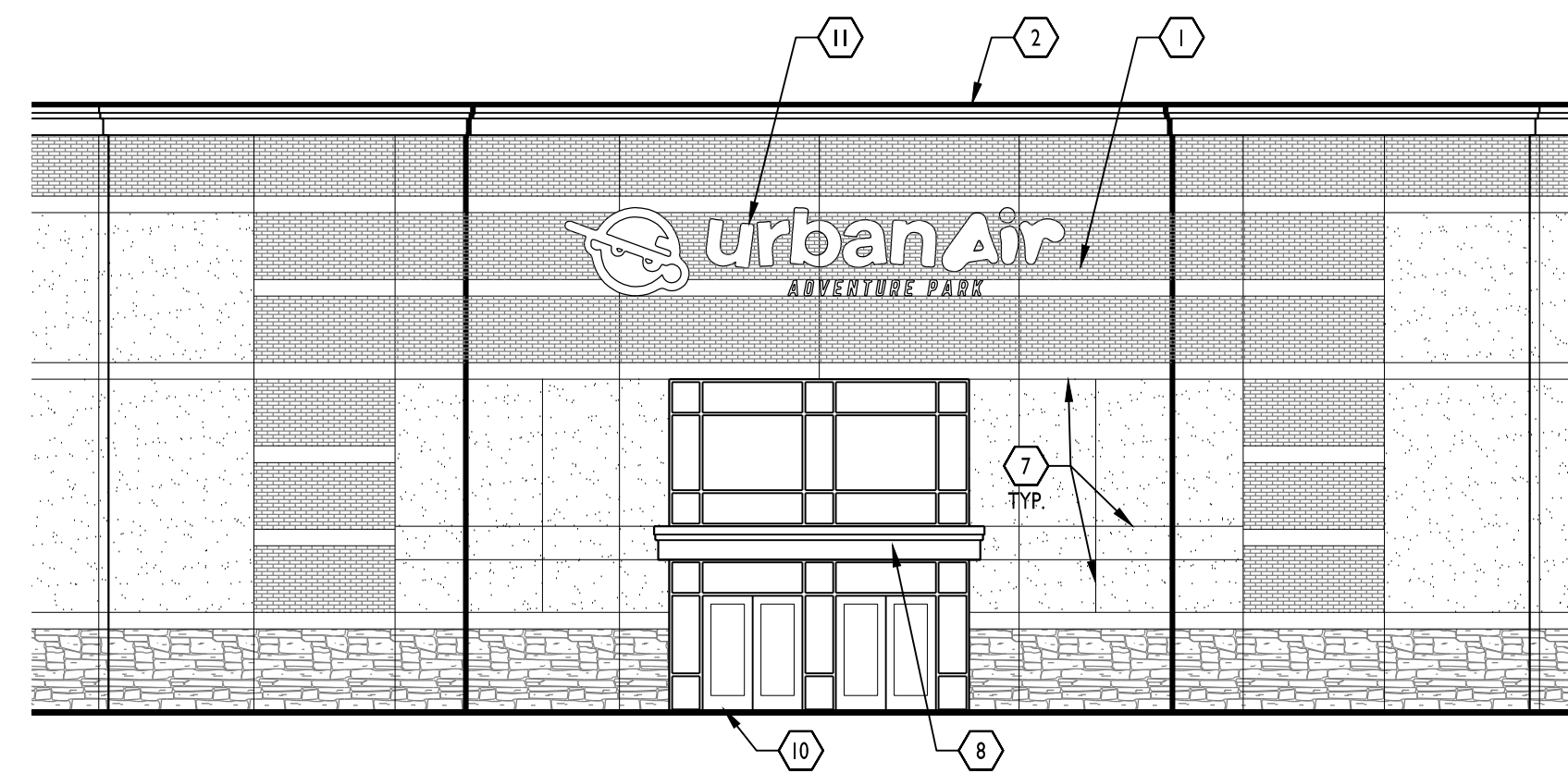
5719 LAWTON LOOP E. DR. #212
INDIANAPOLIS, IN 46216
O :: 317 . 288 . 0681
F :: 317 . 288 . 0753



SOUTH ELEVATION

1
3/32"=1'-0"

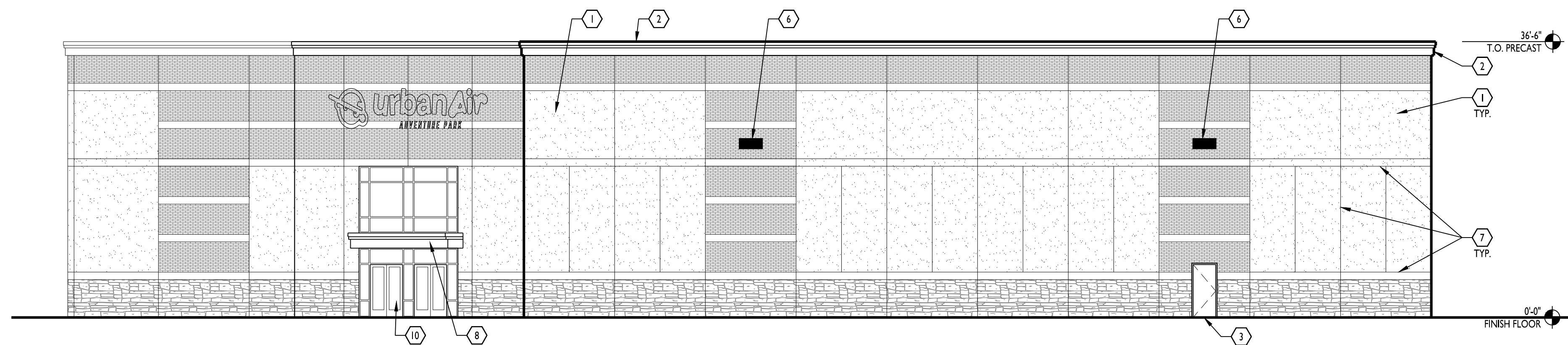
MATERIAL PERCENTAGE	
BRICK:	1,548 SF 22.4%
STONE:	988 SF 14.3%
EIFS:	4,195 SF 60.6%



SOUTH EAST ELEVATION

3
3/32"=1'-0"

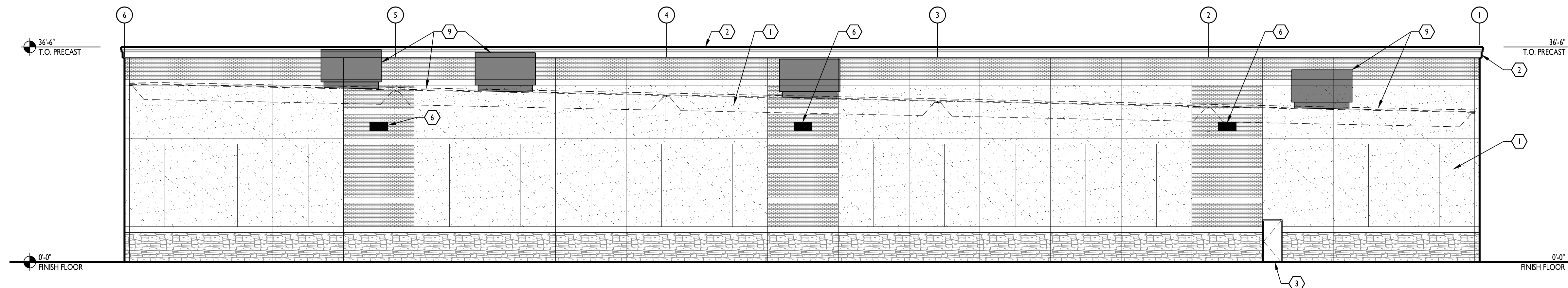
MATERIAL PERCENTAGE	
BRICK:	495 SF 33.7%
STONE:	122 SF 8.3%
EIFS:	339 SF 23.1%



EAST ELEVATION

2
3/32"=1'-0"

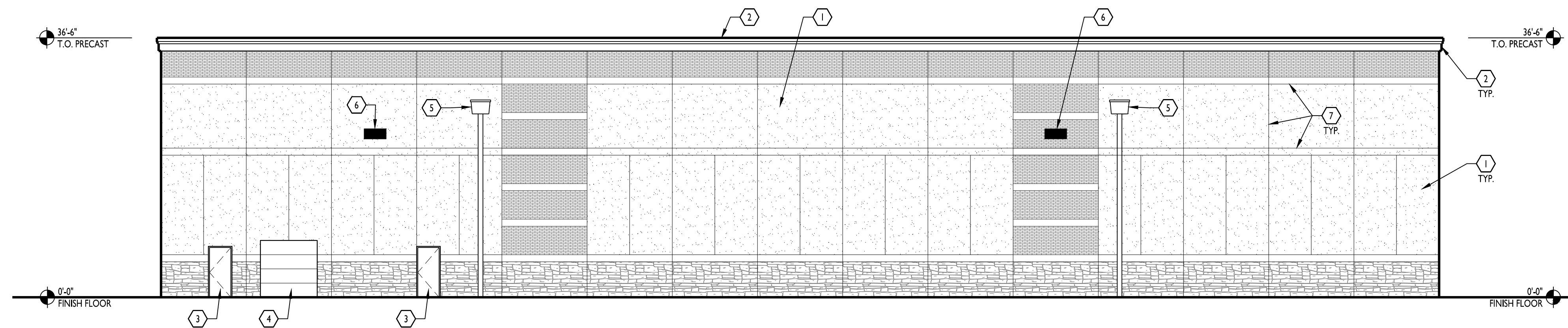
MATERIAL PERCENTAGE	
BRICK:	1,314 SF 25.3%
STONE:	750 SF 14.4%
EIFS:	2,808 SF 54.0%



NORTH ELEVATION

4
3/32"=1'-0"

MATERIAL PERCENTAGE	
BRICK:	1,563 SF 19.6%
STONE:	1,133 SF 14.2%
EIFS:	5,044 SF 63.3%



WEST ELEVATION

5
3/32"=1'-0"

MATERIAL PERCENTAGE	
BRICK:	1,140 SF 18.3%
STONE:	820 SF 13.1%
EIFS:	4,056 SF 65.0%

MATERIALS

- EIFS APPLIED OVER PRECAST TAUPPE SW7506 LOGGIA, OR EQUAL
- THIN BRICK EMBEDDED IN PRECAST MATCH GLEN-GERY THIN BRICK CUSH-HWA 52-DD RED - MODULAR
- ASHLAR STONE FORMLINER IN PRECAST COLOR - NATURAL GRAY

CERTIFICATION

PRELIMINARY
NOT FOR CONSTRUCTION

00.00.00

THIS DRAWING AND THE IDEAS, DESIGNS AND CONCEPTS CONTAINED HEREIN ARE THE EXCLUSIVE INTELLECTUAL PROPERTY OF CURRAN ARCHITECTURE, AND ARE NOT TO BE USED OR REPRODUCED, WHOLE OR IN PART, WITHOUT THE WRITTEN CONSENT OF CURRAN ARCHITECTURE. © COPYRIGHT 2022, CURRAN ARCHITECTURE.

PROJECT INFORMATION

URBAN AIR PLAINFIELD

385 S. PERRY ROAD
PLAINFIELD, INDIANA 46168

ISSUE DATES

ISSUE	DATE

220232
EXTERIOR ELEVATIONS

A201



URBAN AIR

03.20.23

--

PROJECT # 220232

POWERS & SONS :: PLAINFIELD, INDIANA



URBAN AIR

03.20.23

--

PROJECT # 220232

POWERS & SONS :: PLAINFIELD, INDIANA



URBAN AIR

03.20.23

--

PROJECT # 220232

POWERS & SONS :: PLAINFIELD, INDIANA



URBAN AIR

03.22.23

--

PROJECT # 220232

POWERS & SONS :: PLAINFIELD, INDIANA



URBAN AIR

03.22.23

--

PROJECT # 220232

POWERS & SONS :: PLAINFIELD, INDIANA