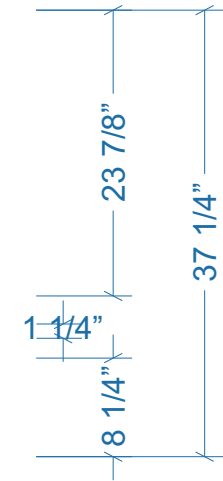


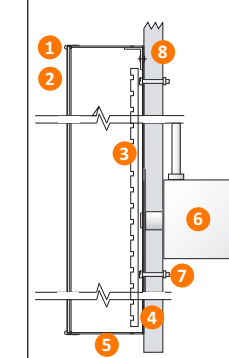
Scale: 3/4" = 1'

157 7/8"
COUSINS SUBS
GRILLED & DELI FRESH

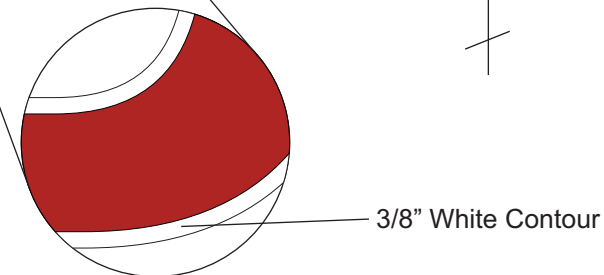


WEST ELEVATION

INDIVIDUALLY-MOUNTED
FACELIT CHANNEL LETTERS
LED ILLUMINATION



- 1 Trimcap w/ retaining screw
- 2 Acrylic face
- 3 LED lighting
- 4 .063" aluminum back
- 5 .040" aluminum return
- 6 LED power supply
- 7 Fasteners (as req.)
- 8 Structural Fascia



S1 • EXTERIOR

Fabricate and install qty (1) facelit channel letter sign

COUSINS

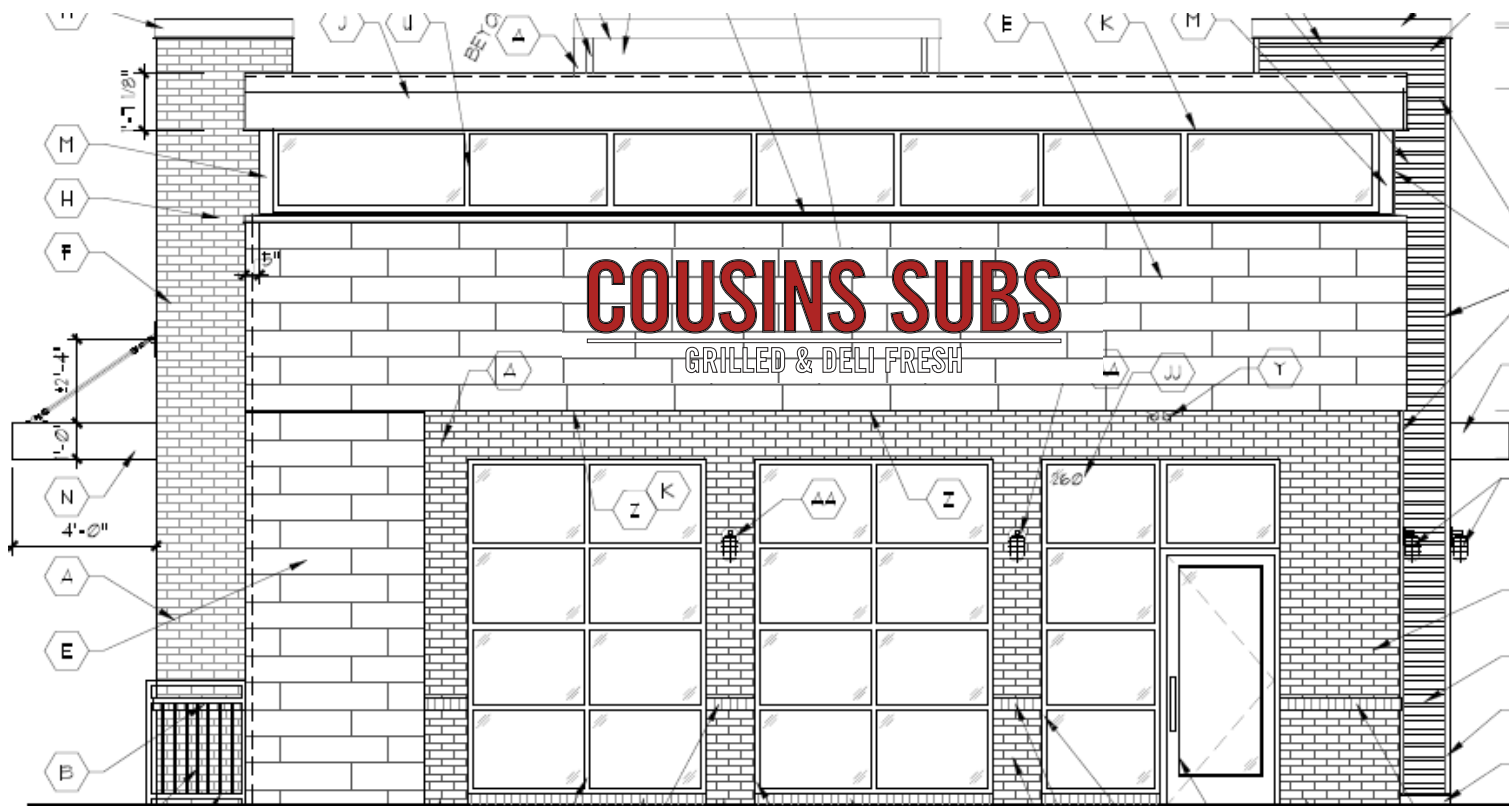
Faces: 3/16" White acrylic (2447)
 Vinyl Inset: Red 3M #3730-73L
 Trimcaps: 1" Black
 Returns: 5" deep .040" Black aluminum
 Illumination: Sloan White LEDs
 Backs: .063" aluminum
 Mounting: Flush to fascia

UNDERSCORE - non-lit

3" deep aluminum tube painted White
 Mounting: Flush to fascia

GRILLED & DELI FRESH

Faces: 3/16" White acrylic (7328)
 Trimcaps: 1" White
 Returns: 3" deep .040" Black aluminum
 Illumination: Sloan White LEDs
 Backs: .063" aluminum
 Mounting: Flush to fascia



Scale: 3/16" = 1'

Cousins Subs

Chris Young

Plainfield, IN

6-1-2023

cous_5-8989_v8

- Revision 1 Revision 2
- Revision 3 Revision 4
- Revision 5 Revision 6
- Revision 7 Revision 8

APPROVED BY

DATE

Field survey required prior to fabrication.

All electrical is configured to 120V unless otherwise specified.



ISFSIGNS
DESIGN-FABRICATION
INSTALLATION-SERVICE

317.251.1219
isfsigns.com

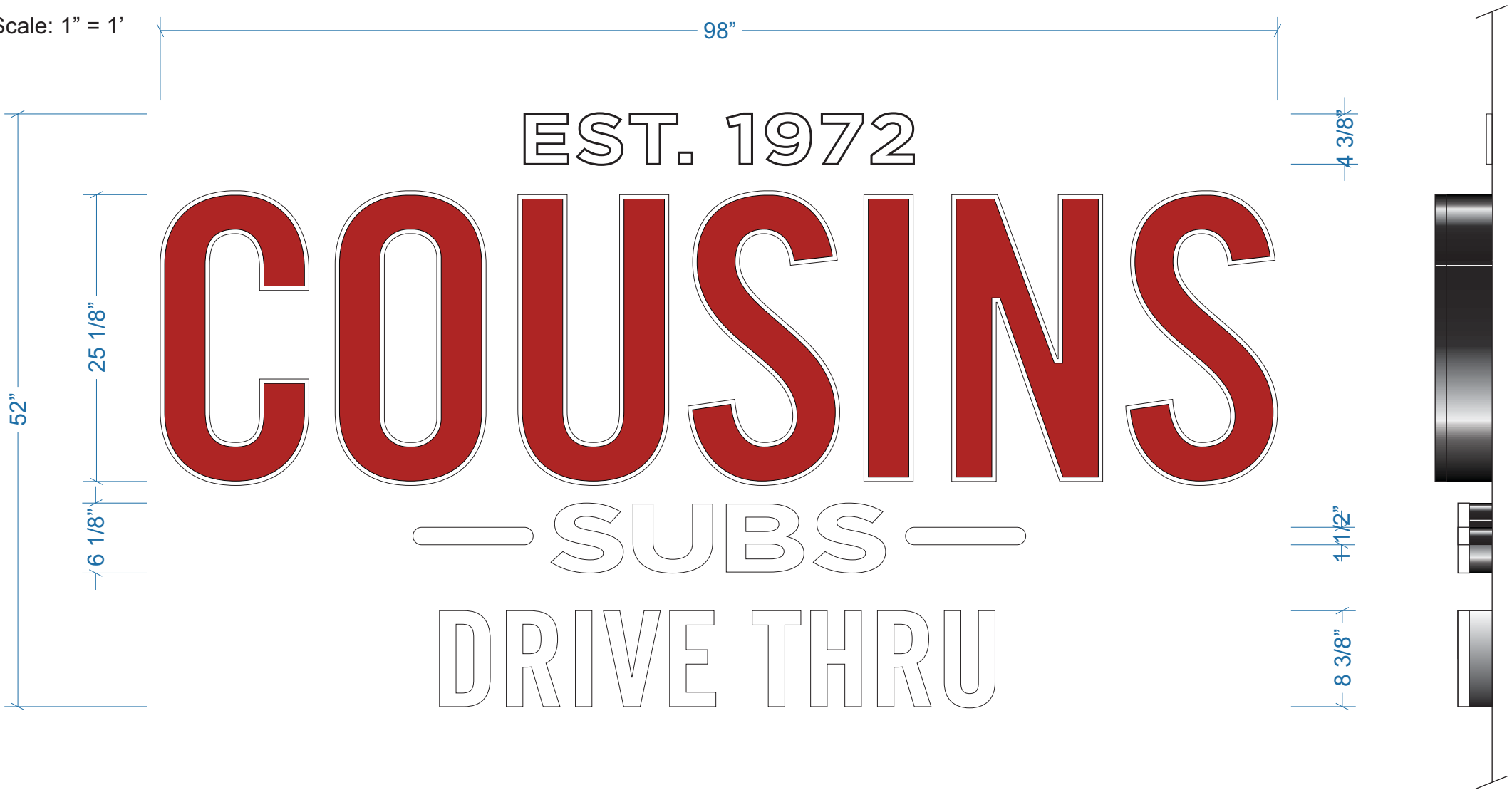
6468 Rucker Road
Indianapolis, IN 46220

The concepts herein are the property of ISF INC. Permission to reproduce, copy or use the design or proposal can only be obtained through written agreement with ISF INC. Due to screen calibration and printing capabilities, the colors shown are only to be used as a close representation or final product.

PAGE 1

DESIGNED BY: CA
REVISED LAST BY: CA

Scale: 1" = 1'



NORTH ELEVATION

S2 • EXTERIOR

Fabricate and install qty (1)
facelit Channel Letter Sign
w/ non-lit components

EST. 1972:

1/2" flat-cut aluminum painted White

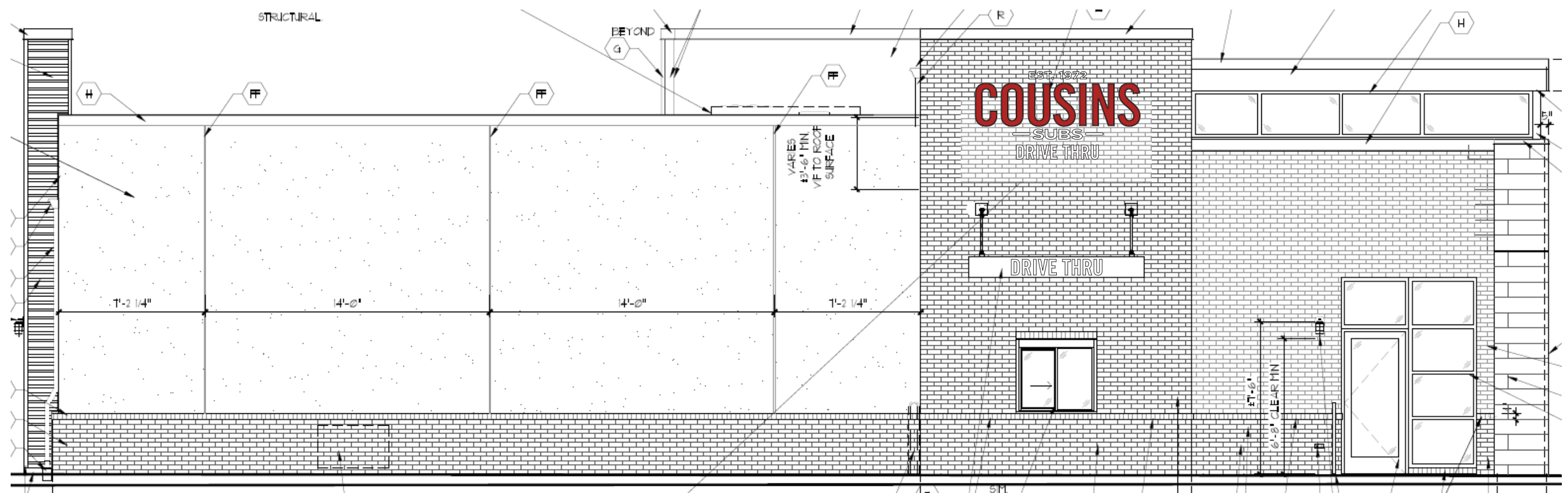
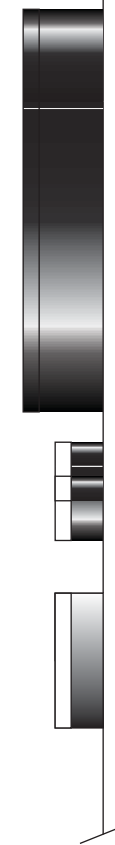
COUSINS

Faces: 3/16" White acrylic (2447)
Vinyl Inset: Red 3M #3730-73L
Trimcaps: 1" Black
Returns: 5" deep .040" Black aluminum
Illumination: Sloan White LEDs
Backs: .063" aluminum

— SUBS — / DRIVE THRU

Faces: 3/16" White acrylic (7328)
Trimcaps: 1" White
Returns: 3" deep .040" Black aluminum
Illumination: Sloan White LEDs
Backs: .063" aluminum

Mounting: Sign components stud-mount
flush to fascia



Scale: 3/16" = 1'

Cousins Subs

Chris Young

Plainfield, IN

6-1-2023

cous_5-8989_v8

- Revision 1 Revision 2
- Revision 3 Revision 4
- Revision 5 Revision 6
- Revision 7 Revision 8

APPROVED BY

DATE

Field survey required prior to fabrication.

All electrical is configured to 120V unless otherwise specified.



ISF SIGNS
DESIGN-FABRICATION
INSTALLATION-SERVICE

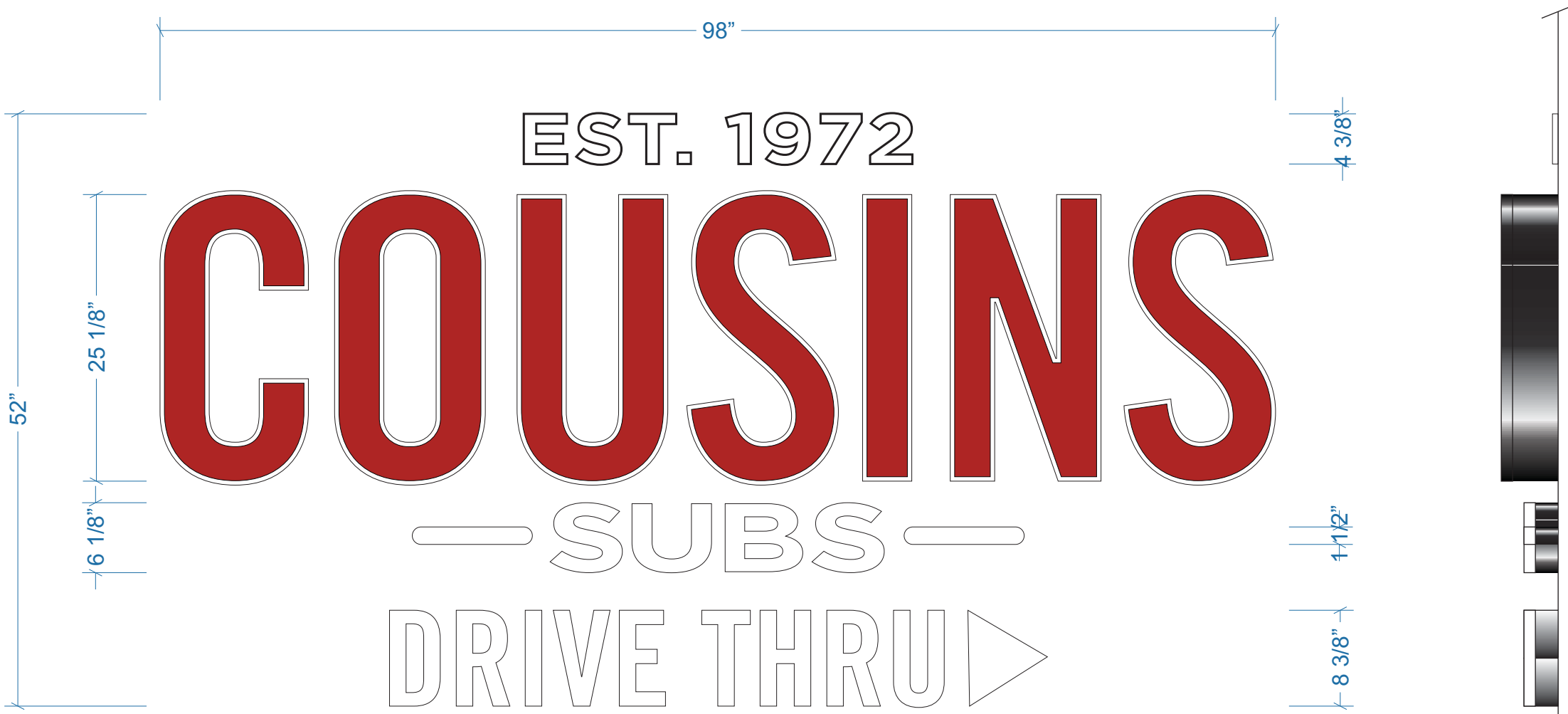
317.251.1219
isfsigns.com

6468 Rucker Road
Indianapolis, IN 46220

The concepts herein are the property of ISF INC. Permission to reproduce, copy or use the design or proposal can only be obtained through written agreement with ISF INC. Due to screen calibration and printing capabilities, the colors shown are only to be used as a close representation or final product.

PAGE 2

DESIGNED BY: CA
REVISED LAST BY: CA



EAST ELEVATION

Cousins Subs

Chris Young

Plainfield, IN

6-1-2023

cous_5-8989_v8

Revision 1 Revision 2

Revision 3 Revision 4

Revision 5 Revision 6

Revision 7 Revision 8

APPROVED BY

DATE

Field survey required prior to fabrication.

All electrical is configured to 120V unless otherwise specified.

Scale: 1" = 1'

S3 • EXTERIOR

Fabricate and install qty (1) facelit Channel Letter Sign w/ non-lit components

EST. 1972:

1/2" flat-cut aluminum painted White

COUSINS

Faces: 3/16" White acrylic (2447)

Vinyl Inset: Red 3M #3730-73L

Trimcaps: 1" Black

Returns: 5" deep .040" Black aluminum

Illumination: Sloan White LEDs

Backs: .063" aluminum

— SUBS — / DRIVE THRU / >

Faces: 3/16" White acrylic (7328)

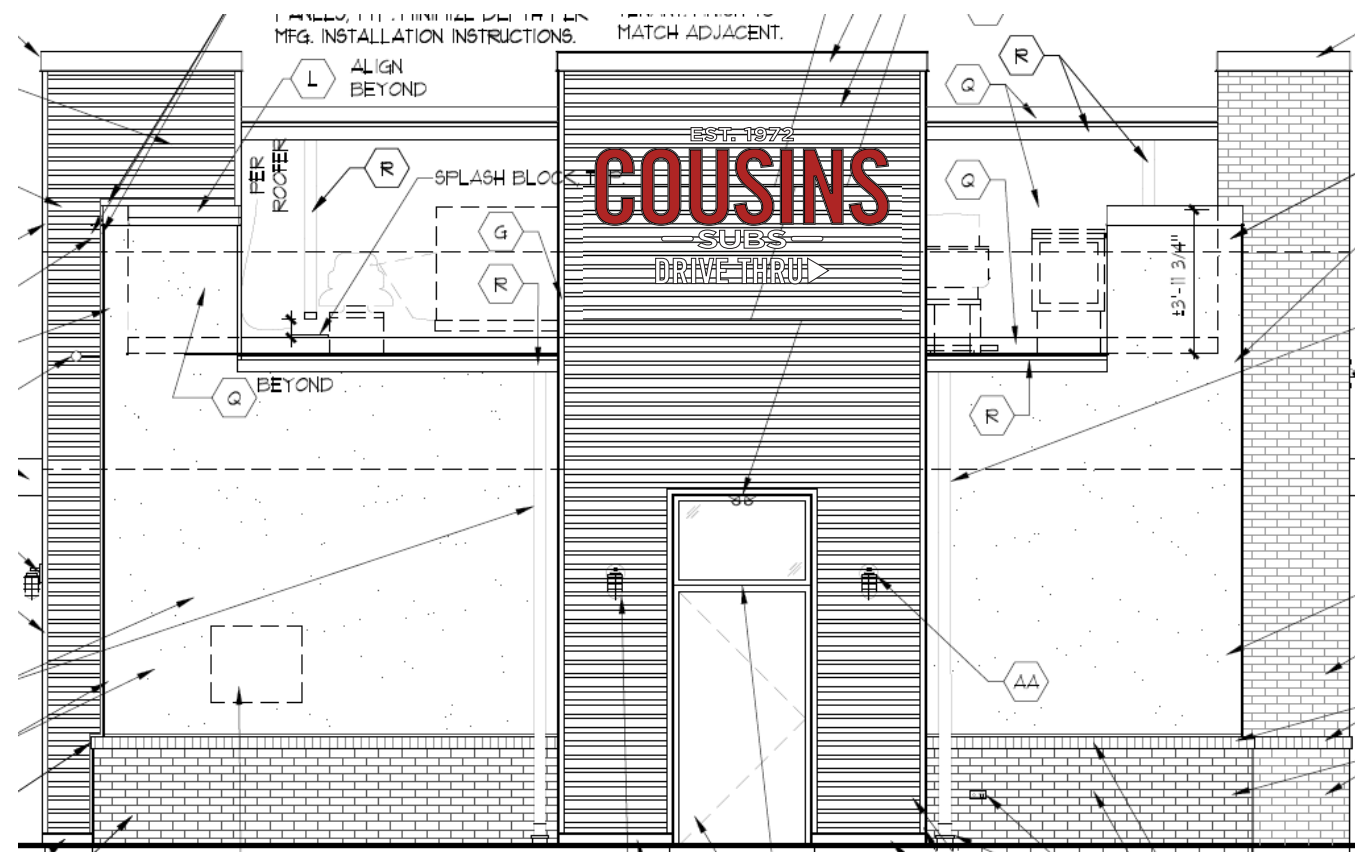
Trimcaps: 1" White

Returns: 3" deep .040" Black aluminum

Illumination: Sloan White LEDs

Backs: .063" aluminum

Mounting: Sign components stud-mount flush to fascia



Scale: 3/16" = 1'



ISFSIGNS
DESIGN-FABRICATION
INSTALLATION-SERVICE

317.251.1219
isfsigns.com

6468 Rucker Road
Indianapolis, IN 46220

The concepts herein are the property of ISF INC. Permission to reproduce, copy or use the design or proposal can only be obtained through written agreement with ISF INC. Due to screen calibration and printing capabilities, the colors shown are only to be used as a close representation or final product.

PAGE 3

DESIGNED BY: CA
REVISED LAST BY: CA

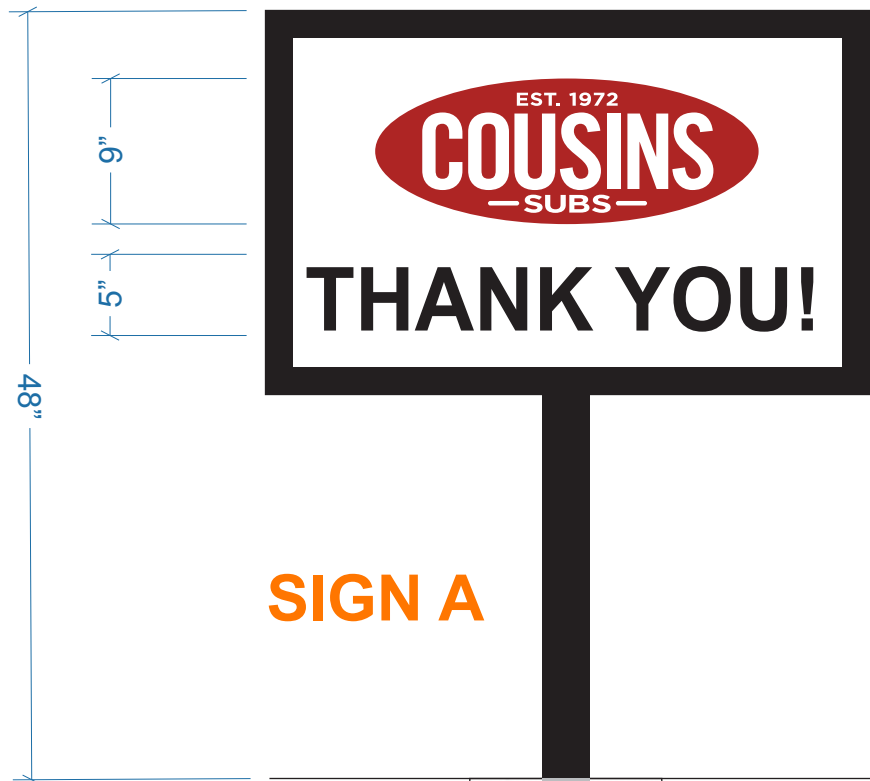


Side 1



Side 1

Scale: 1" = 1'



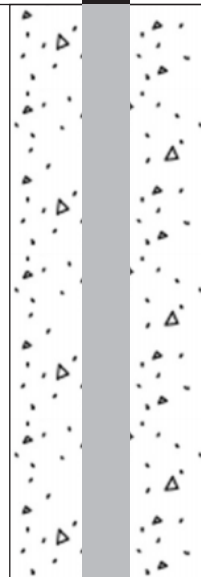
Side 2



Side 2

SIGN A

SIGN B



S4 • EXTERIOR

Fabricate and install qty (2) double-sided facelit directional signs

Aluminum tube / angle frame

.080" aluminum cladding painted Black

1 3/4" aluminum retainers painted Black

Faces: 3/16" White acrylic (2477)

Vinyl:

LOGO: Red 3M #3730-73L - content plotter-cut away
Taglines: cut Black 3M #3730-22L

3" x 3" aluminum posts - exposed area painted Black

Installed via 12" x 12" x 36" concrete footer
Power run to within 5' of ISF install

See LAST page for site plan install locations

Client to provide font to use for new text.

Currently, font is unknown and Arial Bold is a placeholder.

Cousins Subs

Chris Young

Plainfield, IN

6-1-2023

cous_5-8989_v8

- Revision 1 Revision 2
- Revision 3 Revision 4
- Revision 5 Revision 6
- Revision 7 Revision 8

APPROVED BY

DATE

Field survey required prior to fabrication.

All electrical is configured to 120V unless otherwise specified.



ISFSIGNS
DESIGN-FABRICATION
INSTALLATION-SERVICE

317.251.1219
isfsigns.com

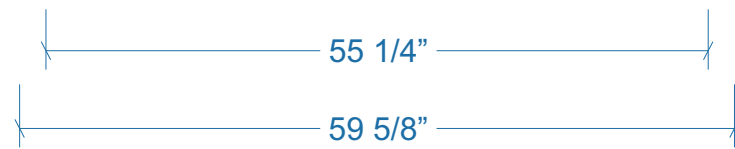
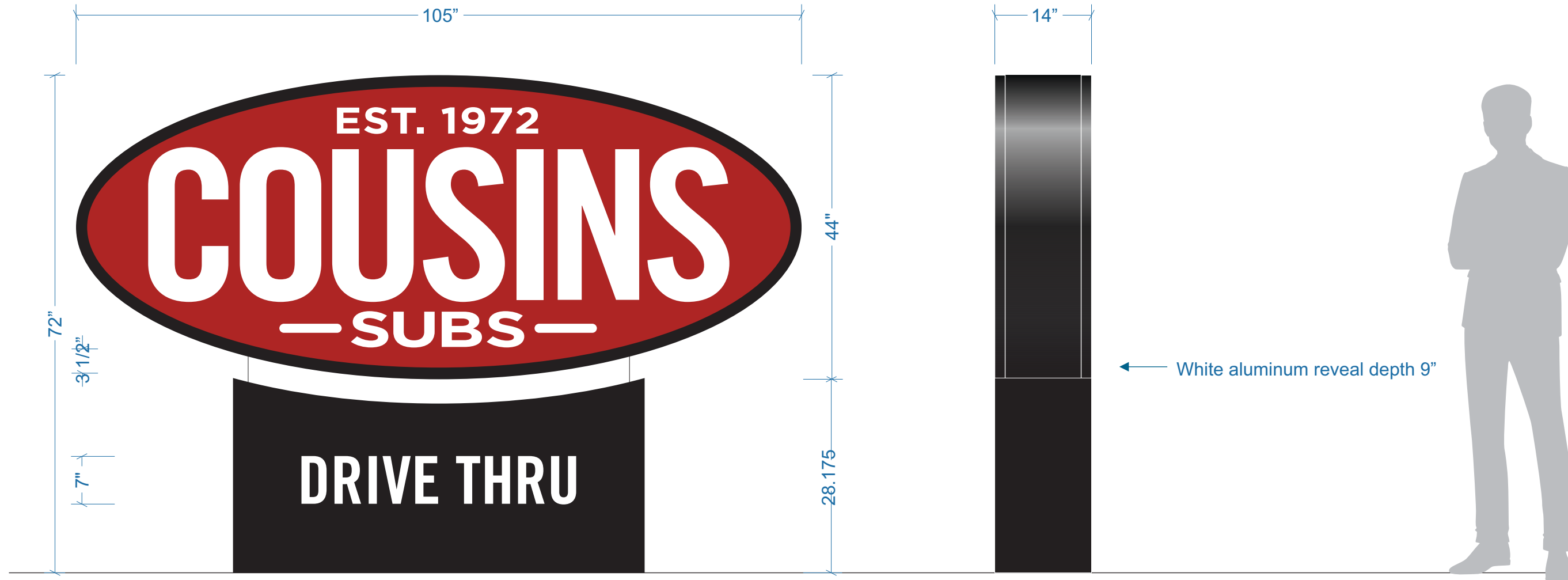
6468 Rucker Road
Indianapolis, IN 46220

The concepts herein are the property of ISF INC. Permission to reproduce, copy or use the design or proposal can only be obtained through written agreement with ISF INC. Due to screen calibration and printing capabilities, the colors shown are only to be used as a close representation or final product.

PAGE 4

DESIGNED BY: CA
REVISED LAST BY: CA

Scale: 3/4" = 1'



SIGN GS S5 • EXTERIOR

Fabricate and install qty (2) double-sided facelit ground signs

Aluminum tube / angle frame .080" aluminum cladding

TOP:

Faces: 3/16" White polycarbonate

Vinyl: Red 3M #3730-73L - content plotter-cut away

Retainers: 1 1/2" aluminum retainers painted Black

Cabinet: Cladding painted Black

Reveal painted White

Base painted Black with cut White vinyls applied reading "DRIVE THRU"

Illumination: AVL 6500K White LEDs

Install: (TBD)

See LAST page for site plan install locations

Cousins Subs

Chris Young

Plainfield, IN

6-1-2023

cous_5-8989_v8

Revision 1 Revision 2

Revision 3 Revision 4

Revision 5 Revision 6

Revision 7 Revision 8

APPROVED BY

DATE

Field survey required prior to fabrication.

All electrical is configured to 120V unless otherwise specified.



ISFSIGNS
DESIGN-FABRICATION
INSTALLATION-SERVICE

317.251.1219
isfsigns.com

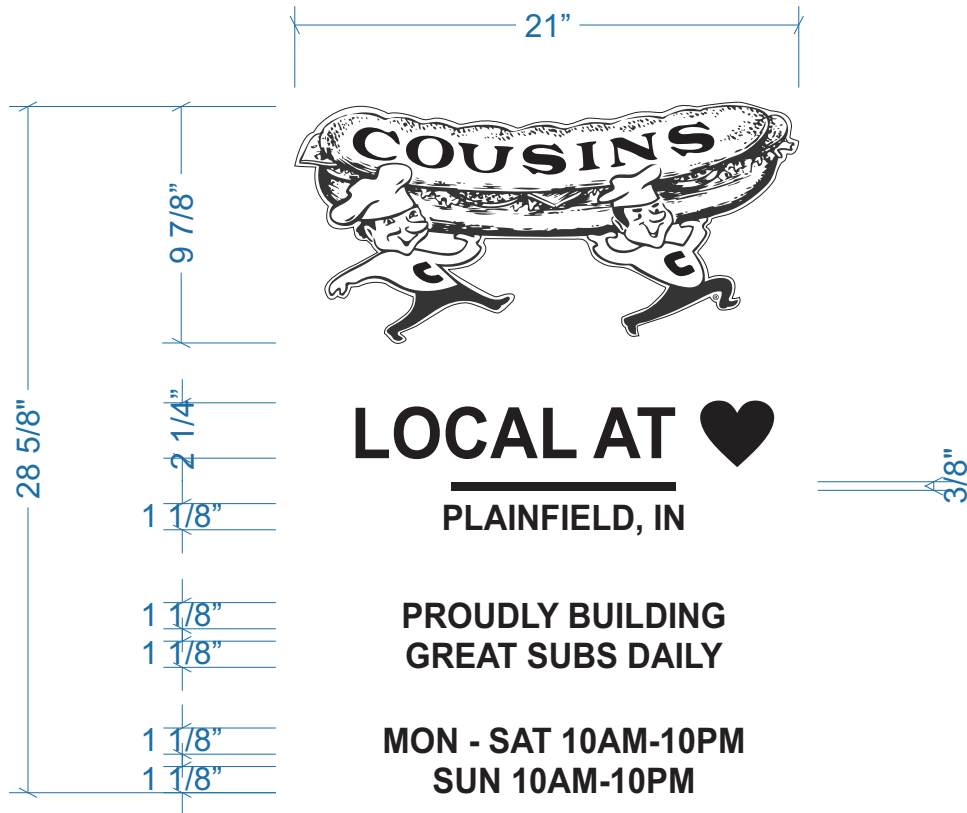
6468 Rucker Road
Indianapolis, IN 46220

The concepts herein are the property of ISF INC. Permission to reproduce, copy or use the design or proposal can only be obtained through written agreement with ISF INC. Due to screen calibration and printing capabilities, the colors shown are only to be used as a close representation or final product.

PAGE 5

DESIGNED BY: CA
REVISED LAST BY: CA

Scale: 1 1/2" = 1'



S6 • EXTERIOR

Fabricate and install qty (1) vinyl application

LOGO:

Optically Clear vinyl - digitally printed / UV Treated White

TEXT:

Cut White vinyl

All applied 1st surface glass

(Shown in Black for proofing purposes only)

SOUTH ELEVATION



Scale: 1/8" = 1'

Cousins Subs

Chris Young

Plainfield, IN

6-1-2023

cous_5-8989_v8

Revision 1 Revision 2

Revision 3 Revision 4

Revision 5 Revision 6

Revision 7 Revision 8

APPROVED BY

DATE

Field survey required prior to fabrication.

All electrical is configured to 120V unless otherwise specified.



ISFSIGNS
DESIGN-FABRICATION
INSTALLATION-SERVICE

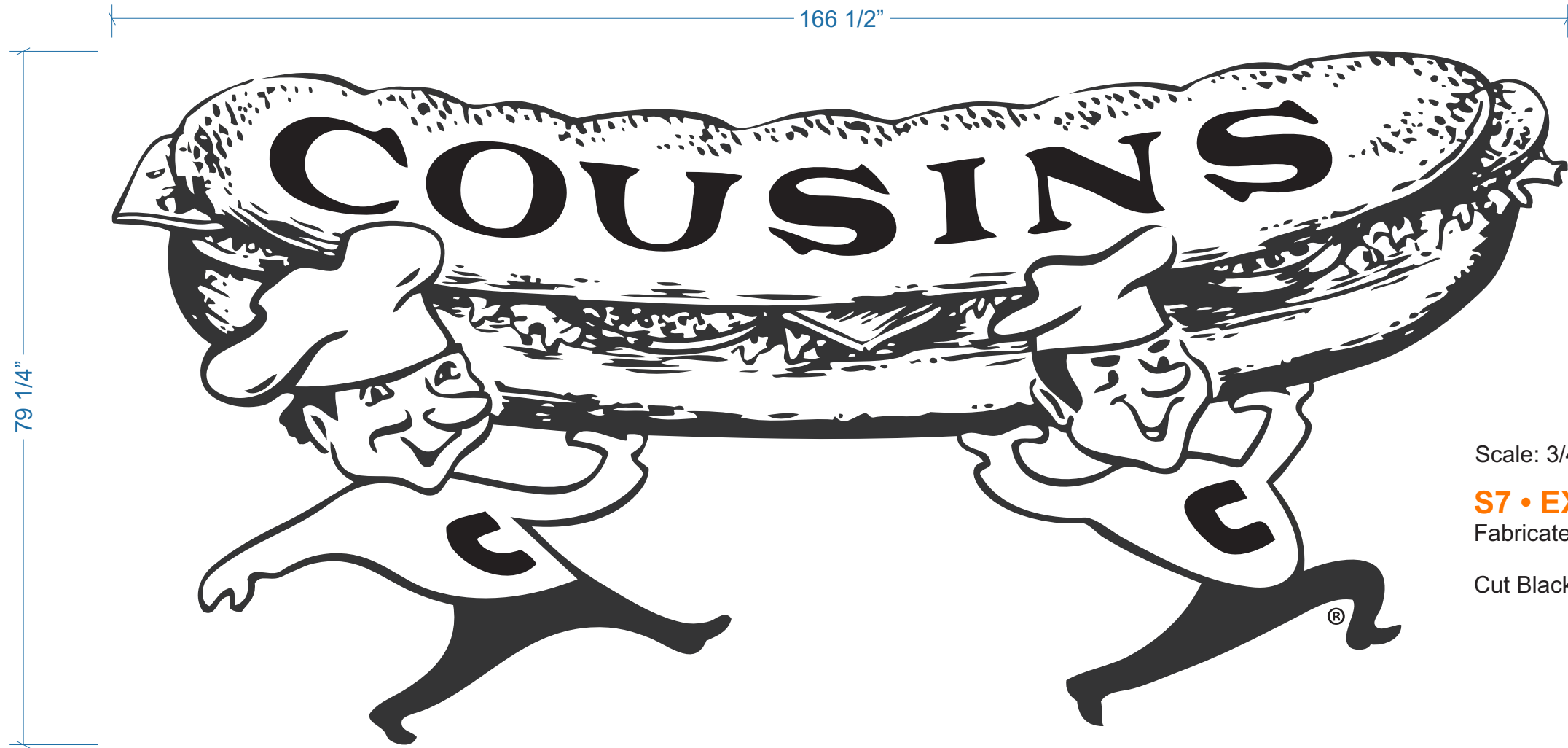
317.251.1219
isfsigns.com

6468 Rucker Road
Indianapolis, IN 46220

The concepts herein are the property of ISF INC. Permission to reproduce, copy or use the design or proposal can only be obtained through written agreement with ISF INC. Due to screen calibration and printing capabilities, the colors shown are only to be used as a close representation or final product.

PAGE 6

DESIGNED BY: CA
REVISED LAST BY: CA



Scale: 3/4" = 1'

S7 • EXTERIOR

Fabricate and install qty (1) exterior vinyl application

Cut Black vinyl applied to textured wall fascia

SOUTH ELEVATION



Scale: 3/16" = 1'

Cousins Subs

Chris Young

Plainfield, IN

6-1-2023

cous_5-8989_v8

- Revision 1 Revision 2
- Revision 3 Revision 4
- Revision 5 Revision 6
- Revision 7 Revision 8

APPROVED BY

DATE

Field survey required prior to fabrication.

All electrical is configured to 120V unless otherwise specified.



ISF SIGNS
DESIGN-FABRICATION
INSTALLATION-SERVICE

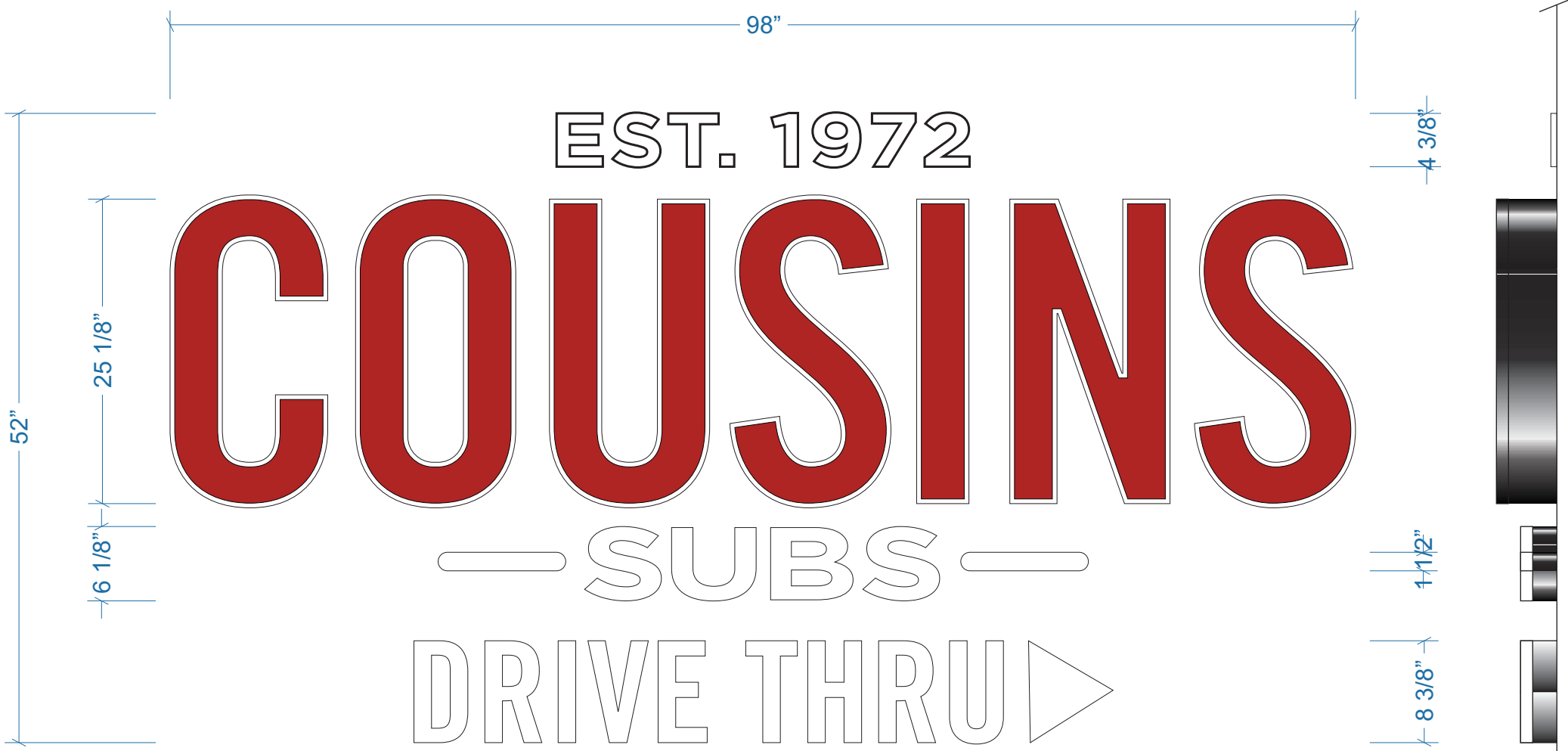
317.251.1219
isfsigns.com

6468 Rucker Road
Indianapolis, IN 46220

The concepts herein are the property of ISF INC. Permission to reproduce, copy or use the design or proposal can only be obtained through written agreement with ISF INC. Due to screen calibration and printing capabilities, the colors shown are only to be used as a close representation or final product.

PAGE 7

DESIGNED BY: CA
REVISED LAST BY: CA



S8 • EXTERIOR

Fabricate and install qty (1)
facilit Channel Letter Sign
w/ non-lit components

EST. 1972:

1/2" flat-cut aluminum painted White

COUSINS

Faces: 3/16" White acrylic (2447)

Vinyl Inset: Red 3M #3730-73L

Trimcaps: 1" Black

Returns: 5" deep .040" Black aluminum

Illumination: Sloan White LEDs

Backs: .063" aluminum

— SUBS — / DRIVE THRU / >

Faces: 3/16" White acrylic (7328)

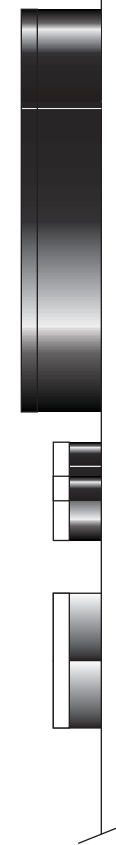
Trimcaps: 1" White

Returns: 3" deep .040" Black aluminum

Illumination: Sloan White LEDs

Backs: .063" aluminum

Mounting: Sign components stud-mount
flush to fascia



SOUTH ELEVATION

Scale: 1" = 1'



Scale: 3/16" = 1'

Cousins Subs

Chris Young

Plainfield, IN

6-1-2023

cous_5-8989_v8

Revision 1 Revision 2

Revision 3 Revision 4

Revision 5 Revision 6

Revision 7 Revision 8

APPROVED BY

DATE

Field survey required prior
to fabrication.

All electrical is configured
to 120V unless otherwise
specified.



ISFSIGNS
DESIGN-FABRICATION
INSTALLATION-SERVICE

317.251.1219
isfsigns.com

6468 Rucker Road
Indianapolis, IN 46220

The concepts herein are the property
of ISF INC. Permission to reproduce,
copy or use the design or proposal
can only be obtained through
written agreement with ISF INC. Due
to screen calibration and printing
capabilities, the colors shown are
only to be used as a close
representation or final product.

PAGE 8

DESIGNED BY: CA
REVISED LAST BY: CA

- Revision 1 Revision 2
- Revision 3 Revision 4
- Revision 5 Revision 6
- Revision 7 Revision 8

APPROVED BY

DATE

Field survey required prior to fabrication.

All electrical is configured to 120V unless otherwise specified.



ISF SIGNS
 DESIGN-FABRICATION
 INSTALLATION-SERVICE

317.251.1219
 isfsigns.com

6468 Rucker Road
 Indianapolis, IN 46220

The concepts herein are the property of ISF INC. Permission to reproduce, copy or use the design or proposal can only be obtained through written agreement with ISF INC. Due to screen calibration and printing capabilities, the colors shown are only to be used as a close representation or final product.

PAGE 9

DESIGNED BY: CA
 REVISED LAST BY: CA

