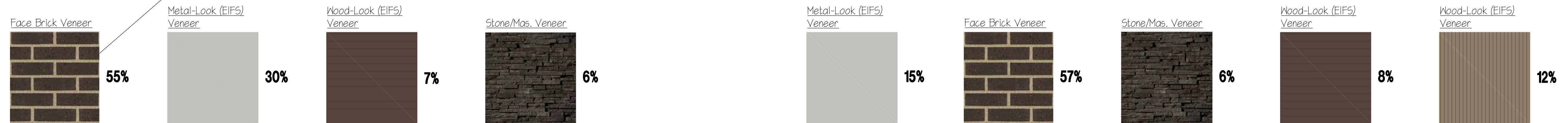
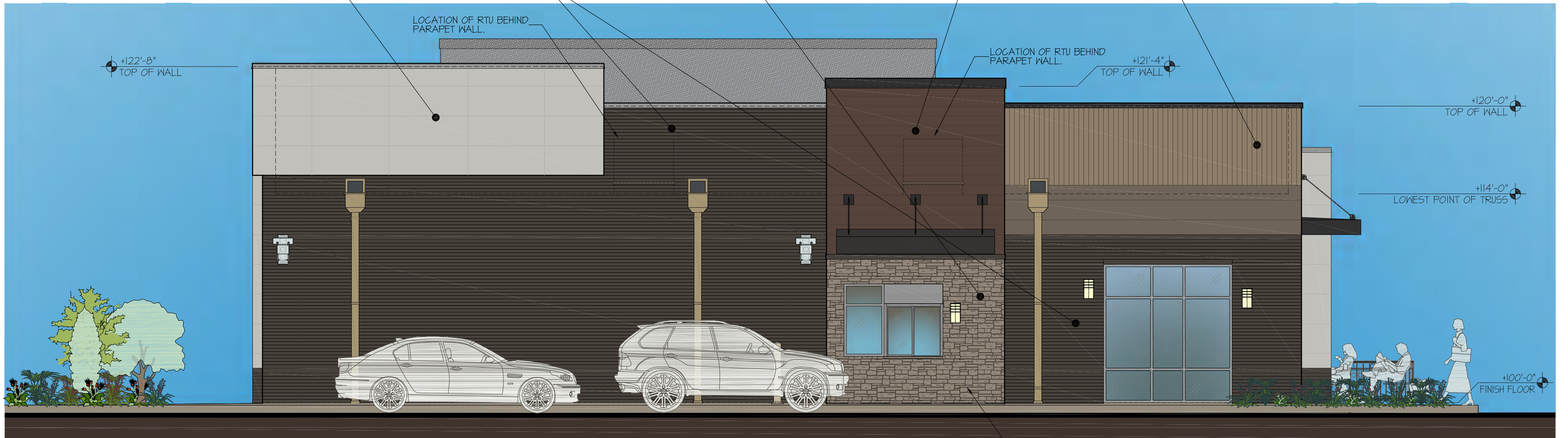
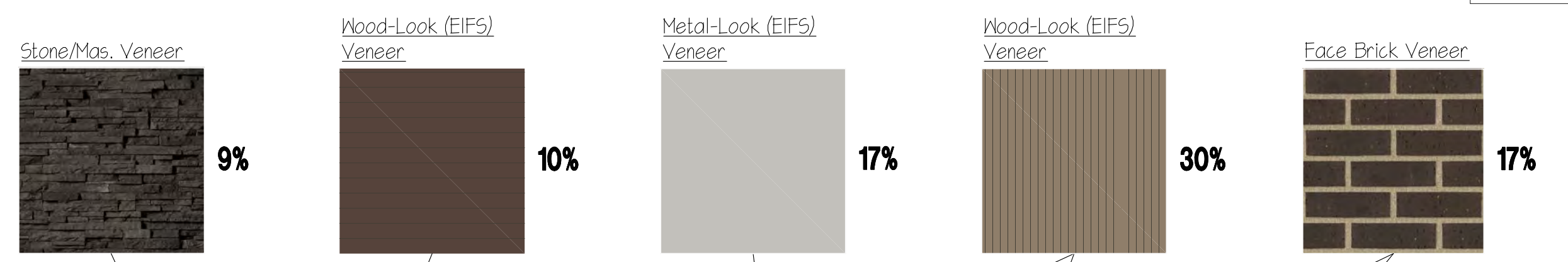


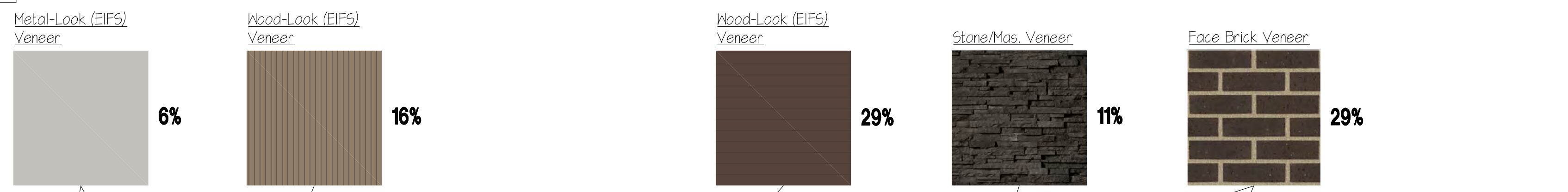
**5 DUMPSTER ENCLOSURE ELEVATIONS**  
SCALE: 1/8" = 1'-0"



**3 WEST (Side) ELEVATION**  
SCALE: 3/16" = 1'-0"



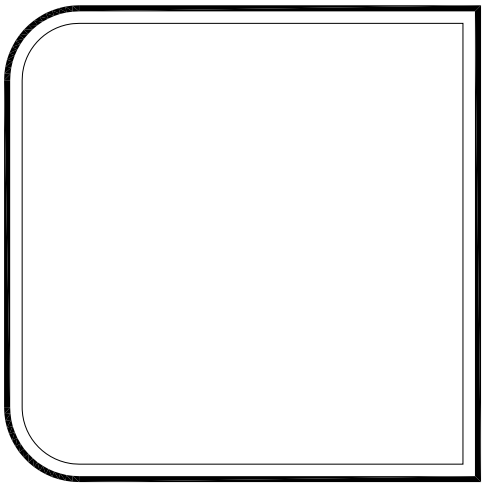
**2 SOUTH (Rear) ELEVATION**  
SCALE: 3/16" = 1'-0"



**4 EAST (Side) ELEVATION**  
SCALE: 3/16" = 1'-0"



**1 NORTH (Front) ELEVATION**  
SCALE: 3/16" = 1'-0"



**LEECH-HENSLEY ARCHITECTS<sup>PC</sup>**

7785 East 126th St. Fishers, IN 46038  
tel 317 842 1931 fax 317 842 7994

DRAWING REVIEW ISSUE	REVISIONS
JUNE 16, 2004	*
JUNE 25, 2020	*
JULY 6, 2020	*
*	*
BUILDING AGENCY SUBMITTAL	
CONSTRUCTION BID/ISSUE	
	FILE - DATE
	2004-120 (6-25-20)
	PLOT SCALE DRAWN BY:
	SEEDING 1'-0"

**PRELIMINARY**

**Starbucks**

5050 Cambridge Way  
PLAINFIELD, INDIANA

development proposed by:  
*Midland Atlantic Properties, Inc.*

**Color Elevations**

**A2.0**

PROJECT NO.  
2004