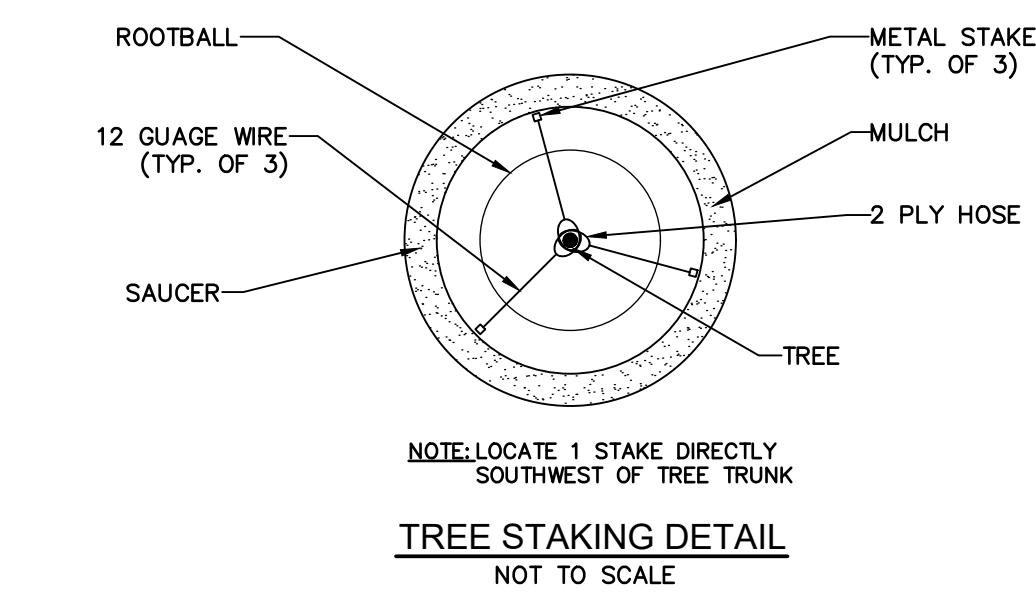
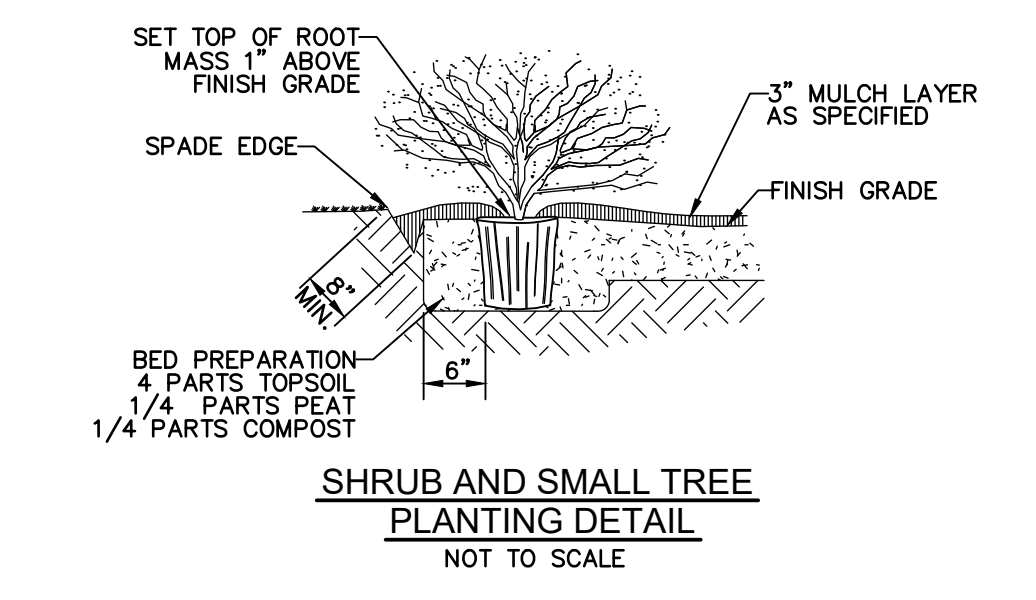


SHADE TREE PLANTING DETAIL
NOT TO SCALE



TREE STAKING DETAIL
NOT TO SCALE



SHRUB AND SMALL TREE PLANTING DETAIL
NOT TO SCALE

LANDSCAPE NOTES:
All species of plant materials and substitutions thereof are subject to acceptance by the Town of Plainfield and approval of the Owner(s) or a representative of the Owner(s).
All plant materials are to be warranted for a period of no less than one year from final acceptance by the Owner(s) or a representative of the Owner(s).
All plant material is to be planted in a manner that ensures its survival. Any environmental or other type of situation that is noted by the landscape contractor that could potentially injure the plant or shorten its longevity is to be made known to the Owner(s) and potential substitutions or corrections to the situation can be made at no expense to the Contractor.
All materials failing the one year warranty period are to be replaced at the expense of the Landscape Contractor.
Any deviation from responsible landscape practices and Town of Plainfield Ordinances will result in the immediate termination of the Landscape Contract and the Contractor will pay all cost associated with the corrections.
All plant material is to come from respectable sources within 100 miles of the site on which it is being installed. If no source for a plant species is available within this area, the project Landscape Architect is to be notified immediately to make a determination of possible options.
All plant material is subject to approval by the project Landscape Architect prior to installation and may be rejected for reasons of health, aesthetics, size or other reasonable causes.
The Landscape Contractor shall make every reasonable effort to preserve existing trees.
The Landscape Contractor is responsible for the timely installation of all material in his contract. Should there be a delay due to weather or other unforeseeable, natural circumstances, the timeline will be adjusted. Personal issues or dilemma are not considered to be a viable reason for an alteration of the projected timeline. Any personal issues should be brought to the attention of the Owner(s), Project Landscape Architect or Project Manager in order to deal with them in a timely manner.
After cultivation, all plant materials shall be mulched with a two to three-inch layer of shredded bark, peat moss, or another suitable material over the entire area of the bed or saucer.
IRRIGATION CONTRACTOR IS RESPONSIBLE TO SUPPLY WATER METER PIT, SERVICE TAPS AT PUBLIC MAIN, AND ALL APPURTENANCES REQUIRED BY THE WATER SERVICE PROVIDER.

NOTE

REFER TO ARCHITECTURAL & FOUNDATION PLANS FOR ALL BUILDING DIMENSIONS.

OWNER/DEVELOPER:

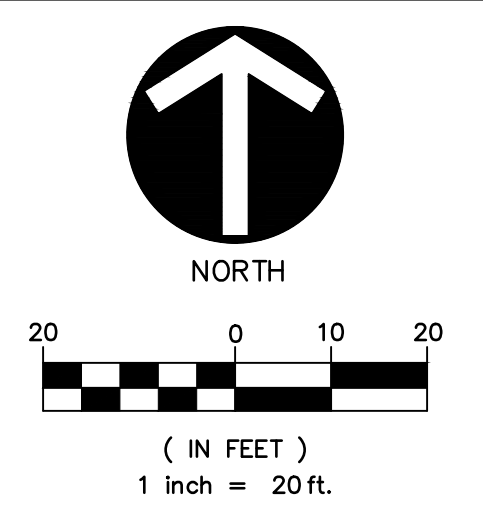
MIDLAND ATLANTIC PROPERTIES
3801 E. 82nd STREET, SUITE B
INDIANAPOLIS, INDIANA 46240
(317) 580-9900

ENGINEER:

CIVIL SITE GROUP, INC.
160 W. CARMEL DRIVE
SUITE 240
CARMEL, INDIANA 46032
(317) 810-1677

SURVEYOR:

WEIHE ENGINEERS, INC.
10505 COLLEGE AVENUE
INDIANAPOLIS, IN 46280
ATTN: GRADY KUHN
(317) 846-6611



REVISION RECORD				
REV	DATE	DESCRIPTION	DES BY	APP BY
1	06/30/20	PRELIM. REV. PER STAFF COMMENTS-DRC MEETING	BSC	BSC
2	07/10/20	REV. PER DRC AND TAC REVIEW COMMENTS	BSC	BSC

LANDSCAPE NOTES

ALL LANDSCAPING SHALL BE IN ACCORDANCE WITH THE TOWN OF PLAINFIELD ZONING ORDINANCE. THE MINIMUM LANDSCAPING IMPROVEMENTS ARE SUBJECT TO FINAL INSPECTION.
PROVIDE 12-INCHES OF AMENDED TOPSOIL TO PLANTING AREAS TO ENSURE OPTIMUM PLANT HEALTH. AMENDMENT TO INCLUDE COMPOST AND ADDED NUTRIENTS PER SOILS REPORT.
PROVIDE A MINIMUM OF 3-INCHES OF ROCK OR RUBBER MULCH OVER PLANTING BEDS TO HIDE DRIP IRRIGATION SYSTEM, RETAIN SOIL MOISTURE AND MINIMIZE WEED GROWTH.
STAKE TREES FOR THE FIRST YEAR UNTIL ESTABLISHED. REMOVE STAKES AFTER ONE YEAR TO ENSURE PROPER ROOT DEVELOPMENT.
ALL PLANTERS SHOULD HAVE PROPER DRAINAGE AND AUTOMATED IRRIGATION AS NECESSARY.
NO BARK CHIPS, STRAW, OR OTHER FLAMMABLE BED FILL ALLOWED.

ELECTRIC TRANSMISSION LINE EASEMENT

THE PROPERTY IS ENCUMBERED BY AN EXISTING HIGH VOLTAGE POWER TRANSMISSION LINE EASEMENT. ALL PROPOSED PLANTINGS WITHIN THIS EASEMENT ARE SUBJECT TO APPROVAL BY INDIANAPOLIS POWER AND LIGHT COMPANY.

LEGEND:

- PROPERTY BOUNDARY
- 3-INCH DEEP HARDWOOD MULCH BED. COLOR SELECTED BY OWNER.
- 3-INCH DEEP LANDSCAPE RIVER ROCK BED. TO BE SELECTED BY OWNER.

PLAN NOTES:

- TRASH ENCLOSURE - SEE ARCHITECTURAL PLAN FOR DETAIL
- PERMANENT SEEDING w/ STRAW MULCH TRANSITIONAL GRADING AREAS
- NURSERY SOD

PLANTING SCHEDULE

SYMBOL	Quantity	Species	Points
	5	"JAPANESE LILAC TREE" - (Min. 1.5" Caliper)	0.50
	2	"OCTOBER GLORY" Acer rubrum 'PNI 0268' - (Min. 2.5" Caliper)	0.75
	2	CERCIS CANDENSIS MEICANA - EASTERN REDBUD (Min. 1.5" Caliper)	0.50
	3	PICEA ABIES - NORWAY SPRUCE (Min. 6" Height)	0.50
	3	Glenditsia triacanthos - Thornless Honey Locust - (Min. 2.5" Caliper)	0.75
	7	Malus x 'Mary Potter' - MARY POTTER CRABAPPLE - (Min. 1.5" Caliper)	0.50
	24	"DENSE SPREADING YEW" (Min. 24" High at Planting)	0.05
	22	Proven Winners selection, Blue Muffin Viburnum (Viburnum dentatum 'Christom') (Min. 24" High at Planting)	0.05
	15	THUJA OCCIDENTALIS PYRAMIDALIS ARBORVITAE (Min. 48" High at Planting)	0.25
	24	SPIREA 'CRISP LEAF', SPIRAEA X BUMALDA 'CRISPA' - (Min. 24" High at Planting)	0.05
	43	"DWARF FOUNTAIN GRASS"	0.025
	21	"GREEN VELVET BOXWOOD" (Min. 24" High at Planting)	0.05
	16	Arania Melanocarpa - "BLACK CHOKEBERRY" (Min. 18" High at Planting)	0.025
	16	KNOCKOUT SHRUB ROSE (Rosa Radazz) - (Min. 24" High at Planting)	0.05
	13	"HAPPY RETURNS DAY LLY" (Min. 18" High at Planting)	0.025
	13	Tiny Tuff Stuff (Hydrangea serrata "MAKD" USPP 24,842) (Min. 18" at Planting)	0.025



EXISTING CONDITIONS NOTE

CONTRACTOR TO VERIFY ALL EXISTING CONDITIONS, INCLUDING UTILITIES AND DRAINAGE INFRASTRUCTURE BEFORE COMMENCING WITH CONSTRUCTION. CONTRACTOR TO NOTIFY ENGINEER OF ANY DISCREPANCIES.

TOPOGRAPHIC & BOUNDARY NOTE

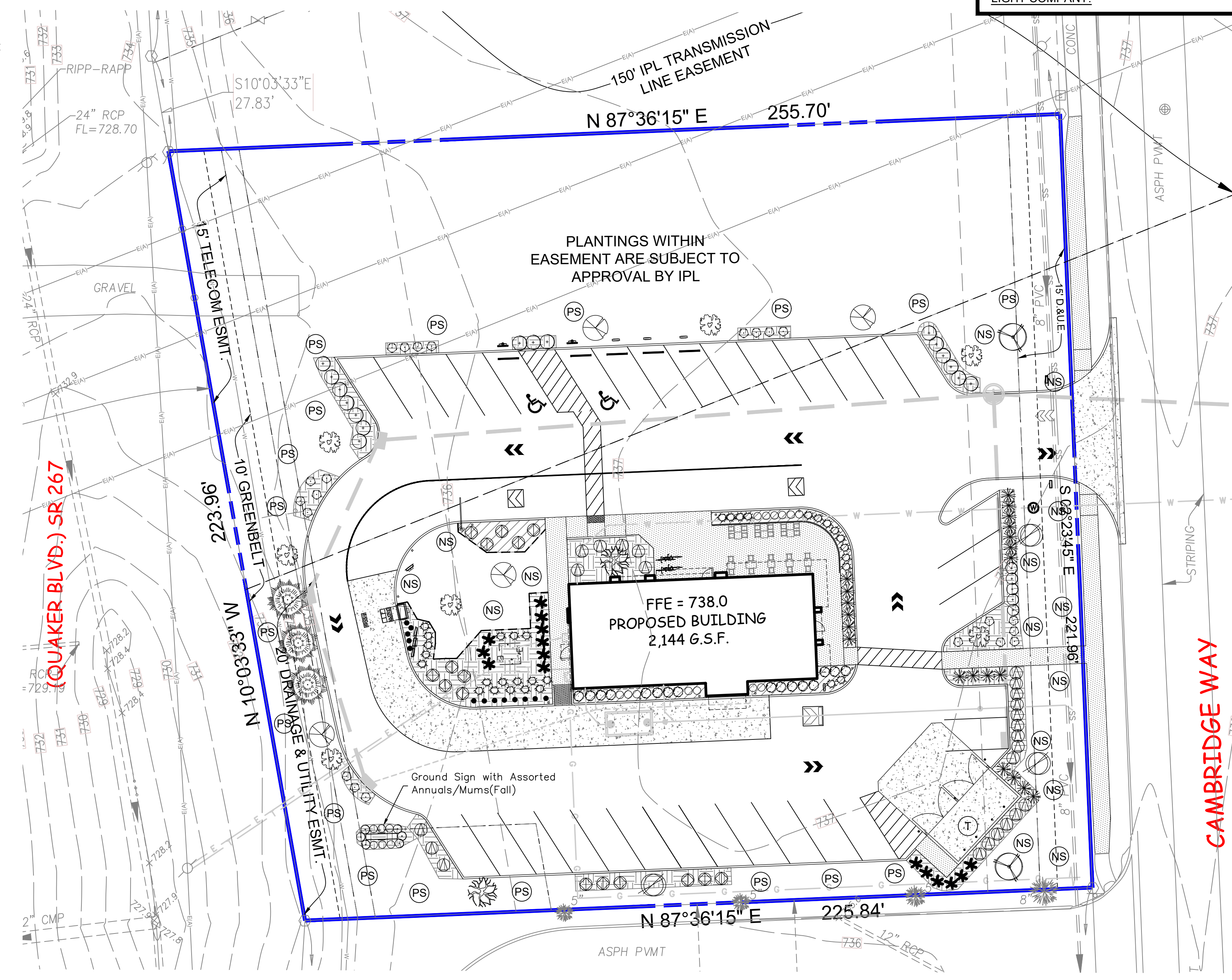
ALL EXISTING HORIZONTAL AND VERTICAL INFORMATION HAS BEEN SHOWN PER A BOUNDARY RETRACEMENT & TOPOGRAPHIC SURVEY PREPARED BY WEIHE ENGINEERS, INC. DATED 05/21/20 (JOB #: W200255); THEREFORE, CIVIL SITE GROUP, INC. CANNOT BE HELD RESPONSIBLE IF INFORMATION FOUND IN THE FIELD DOES NOT AGREE WITH THESE CONSTRUCTION PLANS. CONTRACTOR TO FIELD VERIFY ALL EXISTING INFORMATION PRIOR TO COMMENCING WITH CONSTRUCTION.

SPECIES NOTE

THE SPECIES OF THE TREES AND SHRUBS SHOWN ON THIS LANDSCAPE PLAN ARE SUBJECT TO CHANGE BASED ON SEASONAL AVAILABILITY. ALL SUBSTITUTIONS WILL BE OF SPECIES APPROVED BY THE TOWN OF PLAINFIELD.

IRRIGATION NOTE

SITE IRRIGATION IS NOT SHOWN ON THESE PLANS. IF SITE IRRIGATION IS REQUIRED, CONTRACTOR SHALL WORK WITH THE LOCAL WATER UTILITY TO DETERMINE THE REQUIREMENTS & LOCATION FOR THE IRRIGATION METER & SITE IRRIGATION SYSTEM.



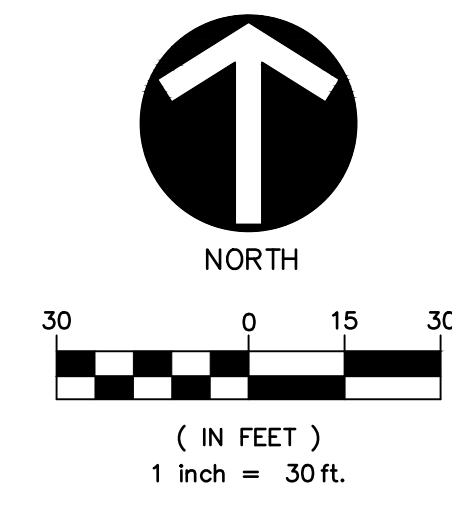
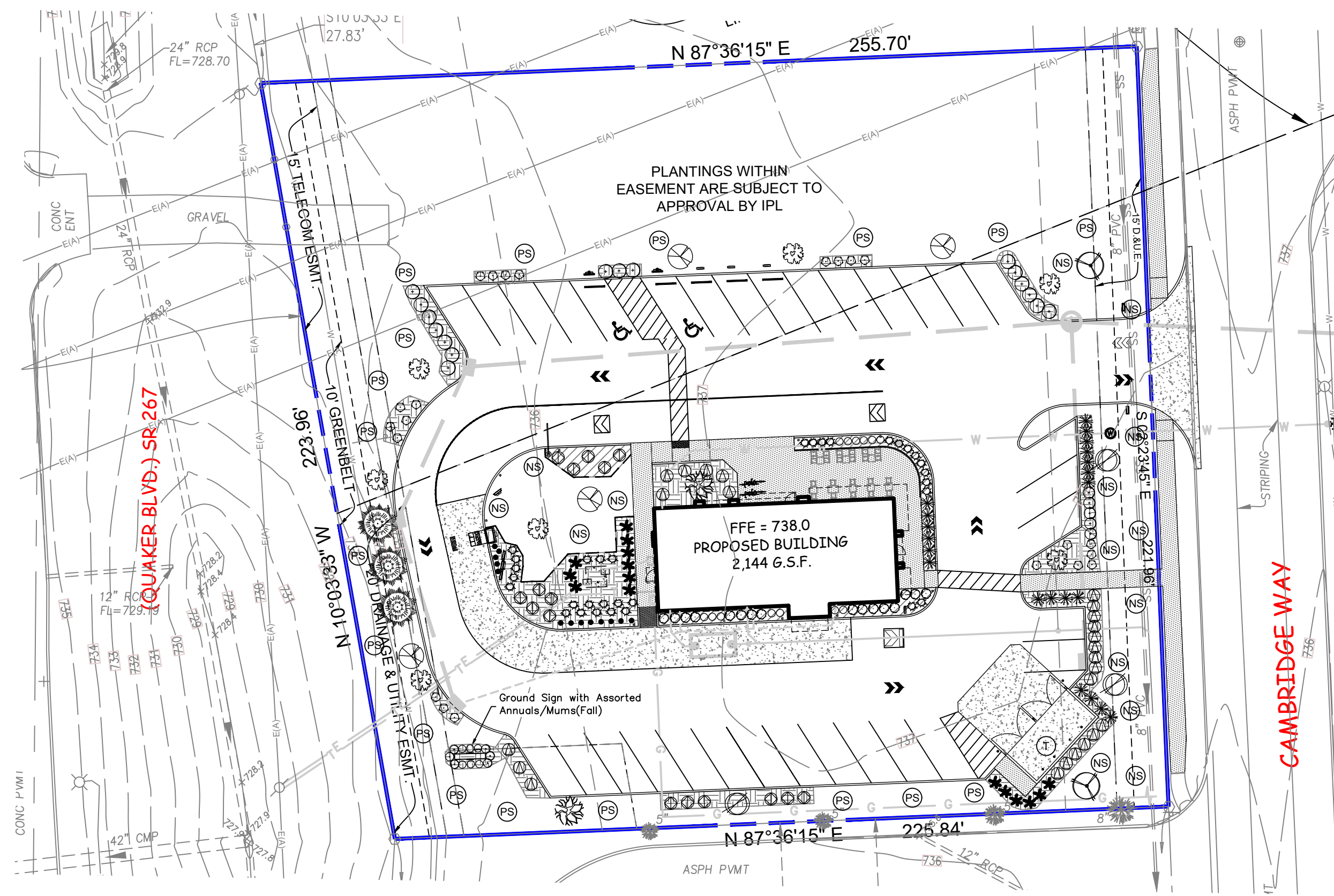
267 PARTNERS, LLC.
3801 E. 82nd STREET, SUITE B
INDIANAPOLIS, INDIANA 46240
CIVIL SITE GROUP, INC.
160 W. Carmel Drive, Suite 240
Carmel, Indiana 46032
Ph: (317) 810-1677 Fax: (317) 810-1679



DWN BY:	BSC
CHKD. BY:	BSC
SCALE:	1" = 20'
DATE:	06/19/20

STARBUCKS - PLAINFIELD
5050 CAMBRIDGE WAY
PLAINFIELD, INDIANA 46168
PRELIMINARY
LANDSCAPE PLAN
NOT FOR CONSTRUCTION

PROJECT NUMBER	MAP.055
DRAWING NUMBER	L1.0
	SHEET 1 OF 2



REVISION RECORD				
REV	DATE	DESCRIPTION	DES BY	APP BY
1	06/30/20	PRELIM. REV. PER STAFF COMMENTS-DRC MEETING	BSC	BSC
2	07/10/20	REV. PER DRC AND TAC REVIEW COMMENTS	BSC	BSC

- LEGEND:**
- PROPERTY BOUNDARY
 - 3-INCH DEEP HARDWOOD MULCH BED. COLOR SELECTED BY OWNER.
 - 3-INCH DEEP LANDSCAPE RIVER ROCK BED. TO BE SELECTED BY OWNER.

- PLAN NOTES:**
- TRASH ENCLOSURE -- SEE ARCHITECTURAL PLAN FOR DETAIL
 - PERMANENT SEEDING w/ STRAW MULCH TRANSITIONAL GRADING AREAS
 - NURSERY SOD

PERIMETER PLANTING REQUIREMENTS
LOCATION - NORTH PERIMETER (PN)

PLANT	QTY	PTS	SUBTOTAL
1.5" ORNAMENTAL	3	0.5	1.5
2.5" SHADE	0	0.75	0
6" EVERGREEN	0	0.5	0
24" SHRUB	11	0.05	0.55
TOTAL			2.05

*SUBJECT TO POWER LINE EASEMENT ENCROACHMENT APPROVAL

FOUNDATION PLANTING REQUIREMENTS
LOCATION - NORTH FOUNDATION (FN)

PLANT	QTY	PTS	SUBTOTAL
1.5" ORNAMENTAL	1	0.5	0.5
2.5" SHADE	0	0.75	0
18" SHRUB	6	0.025	0.15
24" SHRUB	5	0.05	0.25
ORNAMENTAL GRASS	9	0.025	0.225
TOTAL			1.125

PARKING LOT SCREENING REQUIREMENTS
LOCATION - CAMBRIDGE WAY

PLANT	QTY	PTS	SUBTOTAL
1.5" ORNAMENTAL	0	0.5	0
2.5" SHADE	0	0.75	0
6" EVERGREEN	0	0.5	0
24" SHRUB	31	0.05	1.55
TOTAL			1.55

FOUNDATION PLANTING AREA CALCULATION:

AREA (SF)	REQUIRED	PROVIDED
EAST WALL LENGTH = 30	60	174.9
PLANT VALUE (LEVEL 1)	0.3	0.5
18" HGT. HEDGE		3
24" HGT. HEDGE		6
ORNAMENTAL GRASS		5

PERIMETER PLANTING REQUIREMENTS
LOCATION - SOUTH PERIMETER (PS)

PLANT	QTY	PTS	SUBTOTAL
1.5" ORNAMENTAL	1	0.5	0.5
2.5" SHADE	2	0.75	1.5
4" EVERGREEN (NRRW)	6	0.25	1.5
24" SHRUB	6	0.05	0.3
TOTAL			3.8

FOUNDATION PLANTING REQUIREMENTS
LOCATION - SOUTH FOUNDATION (FS) - DRIVE THRU LANE

PLANT	QTY	PTS	SUBTOTAL
1.5" ORNAMENTAL	0	0.5	0
2.5" SHADE	0	0.75	0
18" SHRUB	20	0.025	0.5
24" SHRUB	0	0.05	0
ORNAMENTAL GRASS	0	0.025	0
TOTAL			0.5

*DRIVE-THRU LANE

PARKING LOT INTERIOR REQUIREMENTS

# SPACES	REQUIRED	PROVIDED
32	3	3

Includes Drive-Thru courtyard

FOUNDATION PLANTING AREA CALCULATION:

AREA (SF)	REQUIRED	PROVIDED
WEST WALL LENGTH = 30	60	2082.7
PLANT VALUE (LEVEL 1)	0.3	4.025
18" HGT. HEDGE		0
24" HGT. HEDGE		10
ORNAMENTAL GRASS		31
1.5" ORNAMENTAL		1
2.5" SHADE		0
4" EVERGREEN (NRRW)		9

PERIMETER PLANTING REQUIREMENTS
LOCATION - WEST PERIMETER (PW)

PLANT	QTY	PTS	SUBTOTAL
1.5" ORNAMENTAL	4	0.5	2
2.5" SHADE	0	0.75	0
6" EVERGREEN	3	0.5	1.5
24" SHRUB	18	0.05	0.9
TOTAL			4.4

FOUNDATION PLANTING REQUIREMENTS
LOCATION - WEST FOUNDATION (FW)

PLANT	QTY	PTS	SUBTOTAL
1.5" ORNAMENTAL	1	0.5	0.5
2.5" SHADE	0	0.75	0
4" EVERGREEN (NRRW)	9	0.25	2.25
18" SHRUB	0	0.025	0
24" SHRUB	10	0.05	0.5
ORNAMENTAL GRASS	31	0.025	0.775
TOTAL			4.025

*ELEVATED LANDSCAPING DENSITY FOR UTILITY SCREENING AND DRIVE-THRU AREA

SIGN PLANTING REQUIREMENTS

REQUIRED	PROVIDED
REQUIRED = 1 SF OF LANDSCAPE PER 1 SF OF SIGN FACE WITH 6 EVERGREEN SHRUBS	
PROVIDED = 1 SF OF LANDSCAPE PER 1 SF OF SIGN FACE WITH 6 EVERGREEN SHRUBS	

FOUNDATION PLANTING AREA CALCULATION:

AREA (SF)	REQUIRED	PROVIDED
NORTH WALL LENGTH = 70	140	446.8
PLANT VALUE (LEVEL 1)	0.7	1.125
18" HGT. HEDGE		6
24" HGT. HEDGE		5
ORNAMENTAL GRASS		9
1.5" ORNAMENTAL		1

PERIMETER PLANTING REQUIREMENTS
LOCATION - EAST PERIMETER (PE)

PLANT	QTY	PTS	SUBTOTAL
1.5" ORNAMENTAL	0	0.5	0
2.5" SHADE	3	0.75	2.25
6" EVERGREEN	0	0.5	0
24" SHRUB	0	0.05	0
TOTAL			2.25

FOUNDATION PLANTING REQUIREMENTS
LOCATION - EAST FOUNDATION (FE)

PLANT	QTY	PTS	SUBTOTAL
1.5" ORNAMENTAL	0	0.5	0
2.5" SHADE	0	0.75	0
18" SHRUB	3	0.025	0.075
24" SHRUB	6	0.05	0.3
ORNAMENTAL GRASS	5	0.025	0.125
TOTAL			0.5

TRASH ENCLOSURE LANDSCAPING REQ'D.

REQUIRED	PROVIDED
REQUIRED = 24" TALL SHRUBS, 4' O.C.	
PROVIDED = 24" TALL SHRUBS, 4' O.C.	

FOUNDATION PLANTING AREA CALCULATION:

AREA (SF)	REQUIRED	PROVIDED
SOUTH WALL LENGTH = 70	140	241.6
PLANT VALUE (LEVEL 1)	0.7	0.5
18" HGT. HEDGE		20
24" HGT. HEDGE		
ORNAMENTAL GRASS		
1.5" ORNAMENTAL		

*DRIVE-THRU LANE

267 PARTNERS, LLC.
3801 E. 82nd STREET, SUITE B
INDIANAPOLIS, INDIANA 46240

CIVIL SITE GROUP, INC.
160 W. Carmel Drive, Suite 240
Carmel, Indiana 46032
Ph: (317) 810-1677 Fax: (317) 810-1679



DWN BY: BSC
CHKD. BY: BSC
SCALE: 1" = 30'
DATE: 06/19/20

STARBUCKS - PLAINFIELD
5050 CAMBRIDGE WAY
PLAINFIELD, INDIANA 46168

PRELIMINARY LANDSCAPE PLAN
NOT FOR CONSTRUCTION

PROJECT NUMBER
MAP.055

DRAWING NUMBER
L1.0
SHEET 2 OF 2