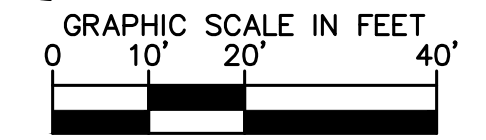
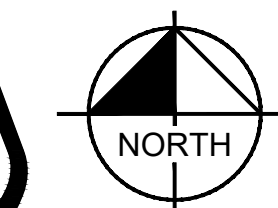
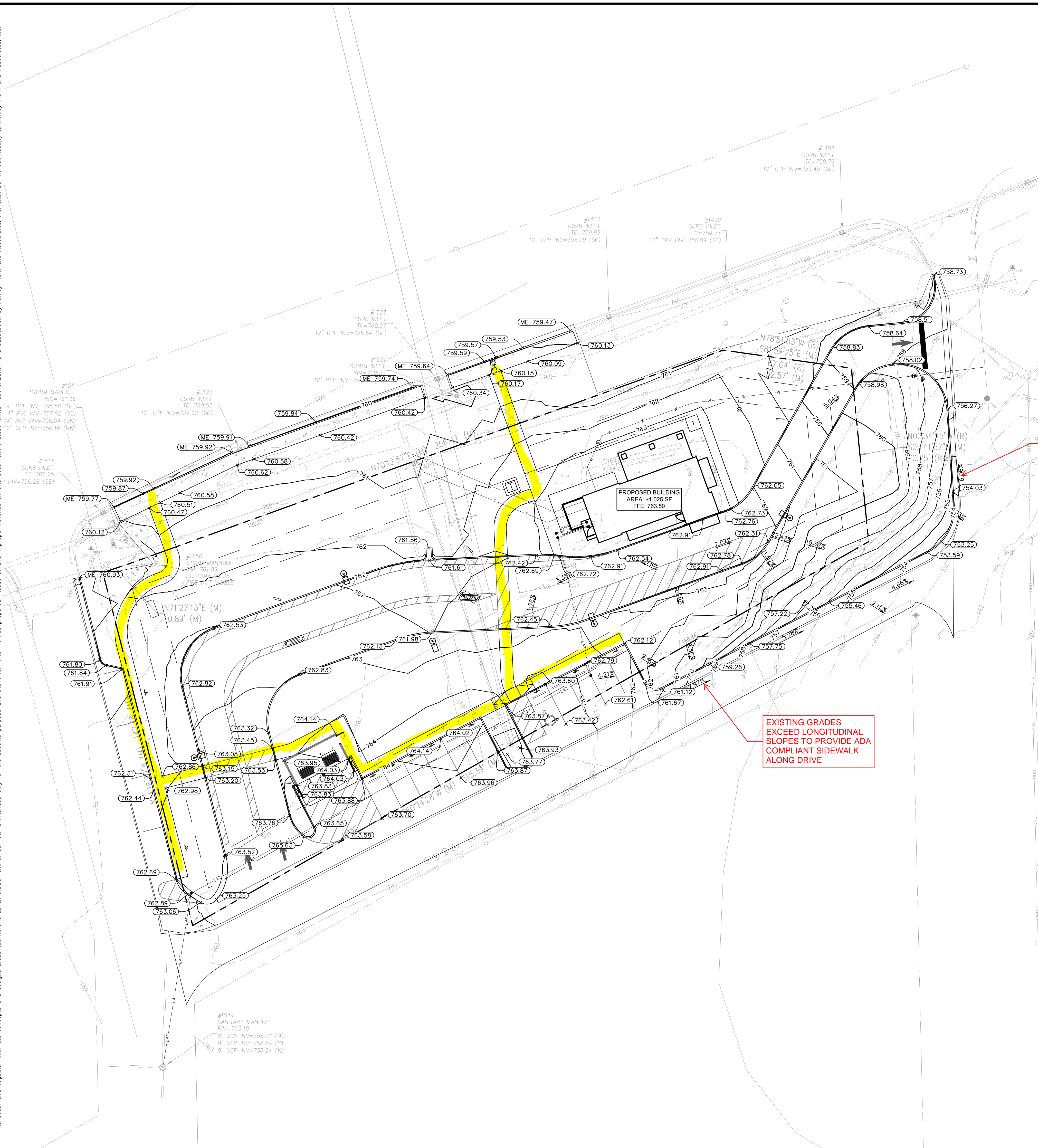




before you dig



Drawing name: K:\IND_DEV\170557007_milkcrate_development\attach_bros_planned.in V2 Design\CADD\plan\milkcrate_C5.0-GRADING AND DRAINAGE PLAN.dwg C5.0 Mar 03, 2026 4:26pm by: Joakimone
This document, together with the concepts and designs presented herein, is intended only for the specific purpose and client for which it was prepared. Reuse of and improper reliance on this document without written authorization and adaptation by Kimley-Horn and Associates, Inc. shall be without liability to Kimley-Horn and Associates, Inc.



EXISTING LEGEND

○ BOLLARD	○ MISC LID	○ YARD LIGHT
⊕ CONTROL BENCHMARK	⊕ GAS MARKER	○ SANITARY CLEANOUT
⊕ FLAG POLE	⊕ GAS METER	○ SANITARY MANHOLE
⊕ MAIL BOX	⊕ GAS VALVE	○ VENT PIPE
⊕ UTILITY POLE	⊕ AC UNIT	○ STORM CURB INLET
⊕ POST	⊕ AREA LIGHT	○ STORM INLET
⊕ SOIL BORING	⊕ ELECTRICAL BOX	○ STORM ROOF DRAIN
⊕ HANDICAP SYMBOL	⊕ ELECTRICAL HAND HOLE	○ STORM DRAIN MANHOLE
⊕ SIGN	⊕ ELECTRICAL METER	○ STORM YARD DRAIN
⊕ CABLE MANHOLE	⊕ ELECTRICAL MANHOLE	○ FIRE DEPT CONNECTION
⊕ CABLE PEDESTAL	⊕ ELECTRICAL MARKER	○ FIRE HYDRANT
⊕ TELEPHONE PEDESTAL	⊕ ELECTRICAL TRANSFORMER	○ IRRIGATION VALVE
⊕ TELEPHONE HAND HOLE	⊕ GUY POLE/WIRE	○ POST INDICATOR VALVE
⊕ TELEPHONE MARKER	⊕ POWER POLE	○ WELL
⊕ TELEPHONE MANHOLE	⊕ TRAFFIC SIGNAL POLE	○ WATER METER
⊕ FIBER OPTIC MAKER	⊕ TRAFFIC MANHOLE	○ WATER VALVE
⊕ SWALE	⊕ TOE OF SLOPE	○ TREE / STUMP
⊕ FENCE LINE	⊕ TOP OF BANK	
⊕ SANITARY SEWER	⊕ UNDERGROUND FIBER OPTIC	
⊕ STORM DRAIN	⊕ OVERHEAD ELECTRICAL	
⊕ WATER LINE	⊕ GAS UNDERGROUND GAS	
⊕ TREE LINE	⊕ UNDERGROUND TELEPHONE	

GRADING LEGEND

XXX.XX	FINISHED GRADE SPOT ELEVATION
TC XXX.XX	TOP OF CURB / BOTTOM OF CURB SPOT ELEVATION
BC XXX.XX	BOTTOM OF CURB SPOT ELEVATION
FL XXX.XX	FLOW LINE SPOT ELEVATION
ME XXX.XX	MATCH EXISTING SPOT ELEVATION
FF XXX.XX	FINISHED FLOOR SPOT ELEVATION
FG XXX.XX	FINISHED GRADE NEAR BUILDING SPOT ELEVATION
TW XXX.XX	TOP OF WALL SPOT ELEVATION
BW XXX.XX	BOTTOM OF WALL SPOT ELEVATION
R XXX.XX	RIM ELEVATION
STR XX	STRUCTURE ID & RIM ELEVATION
STR XX INV XXX.XX	STRUCTURE ID & INVERT ELEVATION
620	PROPOSED CONTOUR
—	RIDGE LINE
X-XXX	SLOPE AND FLOW DIRECTION
←	100-YEAR OVERLAND OVERFLOW ROUTE
←	DETECTION BASIN 100-YEAR EMERGENCY
—	PROPOSED SWALE
—	PROPOSED STORM SEWER
—	PROPOSED STORM STRUCTURES
—	PROPOSED SANITARY MANHOLE
—	PROPOSED STORM/SANITARY CLEANOUT
—	PROPOSED WATER STRUCTURES
—	PROPOSED LIGHT POLES
—	PROPOSED TRANSFORMER PAD

EXISTING GRADES EXCEED LONGITUDINAL SLOPES TO PROVIDE ADA COMPLIANT SIDEWALK ALONG DRIVE

EXISTING GRADES EXCEED LONGITUDINAL SLOPES TO PROVIDE ADA COMPLIANT SIDEWALK ALONG DRIVE

BENCHMARKS

SITE BENCHMARKS:
(LOCATIONS SHOWN ON SURVEY)

TBM #400 MAG SPIKE ON NORTH SIDE OF UTILITY POLE #60-963, NEAR THE NORTHWEST CORNER OF THE PROJECT SITE ALONG THE SOUTH SIDE OF US-40
ELEVATION=764.19 (NAVD 88)

TBM #401 MAG SPIKE ON EAST SIDE OF UTILITY POLE #65A, LOCATED ALONG THE EAST SIDE OF OMEGA LANE APPROXIMATELY 175 FEET SOUTH OF THE INTERSECTION WITH LOCUST DRIVE
ELEVATION=751.07 (NAVD 88)

TBM #102 MAG NAIL ON EAST SIDE OF PAVEMENT EDGE OF OMEGA LANE ±61' NORTHEAST OF THE OMEGA LANE AND LOCUST DRIVE INTERSECTION, ±16' EAST OF THE WEST PAVEMENT EDGE
ELEVATION=756.58 (NAVD 88)

JDK	3/3/26	DATE	BY
DRC	SUBMITTAL	NO.	REVISIONS
AS NOTED	DESIGNED BY: JDK	DRAWN BY: JDK	CHECKED BY: CSM
GRADING AND DRAINAGE PLAN			
DUTCH BROS PLAINFIELD 1815 E. MAIN ST PLAINFIELD, IN 46168			
ORIGINAL ISSUE: 02/12/2026			
KHA PROJECT NO. 170557007			
SHEET NUMBER			
C5.0			

GENERAL PLAN NOTES

REFER TO GENERAL NOTES SHEET FOR MORE INFORMATION INCLUDING THE FOLLOWING: (EXISTING LEGEND, BENCHMARK INFORMATION, AND SPECIFIC GENERAL PLAN NOTES.)