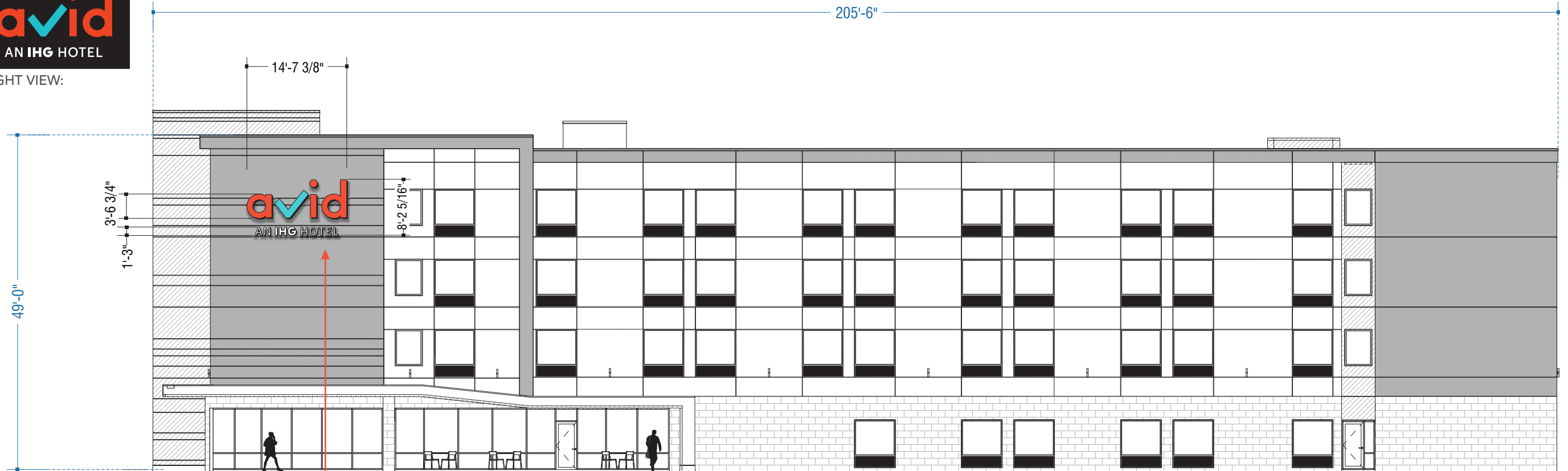




NIGHT VIEW:



1
Reference
KS2000600C
for Manufacturing Specifications

WEST ELEVATION

SCALE: 1/16" = 1'- 0"

DO NOT SHEETROCK WALL WHERE SIGNS ARE LOCATED
Coordinate Pre-Drill / Pre-Wire Installation if needed, as soon as permits are approved.



ACCOUNT: Avid Hotels
LOCATION: Plainfield, IN - INDVA
ACCT. REP: M. Baughman DESIGNER: MSO
DATE: 3/5/20
COMPANION FILES: _____

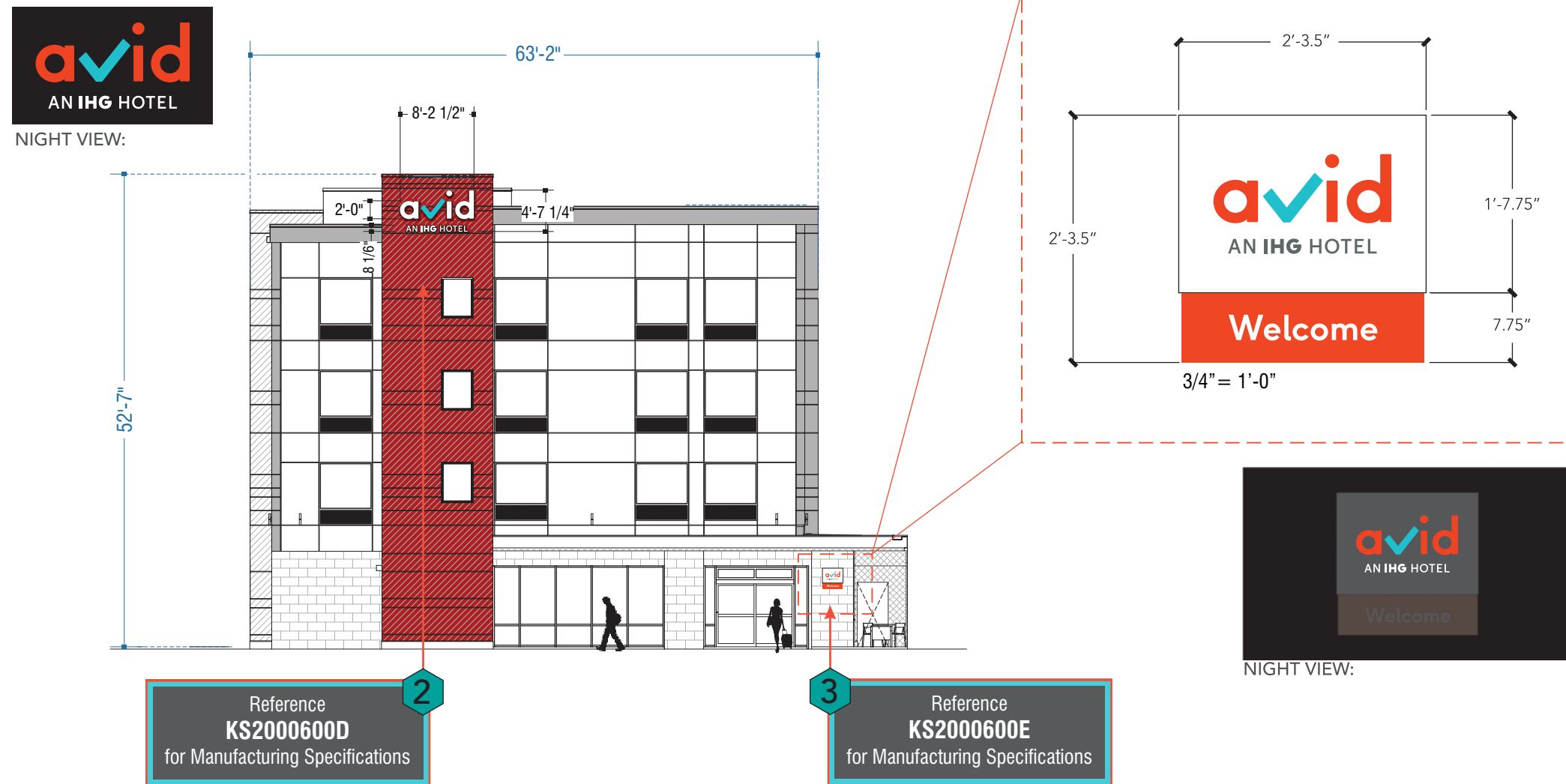


REVISIONS:	INITIALS & DATE:
▲ Rev w/ updated elev.	MSO 3/9/20
▲ Remove sign on left side	MSO 3/10/20
▲ Rev. with original elevations	MSO 3/12/20
▲ -	-
▲ -	-
▲ -	-
▲ -	-
▲ -	-

This is an original unpublished drawing submitted for use in connection with a project being planned for you by Kieffer Holding Co. It is not to be reproduced, copied or exhibited in any fashion without the written permission of Kieffer Holding Company.

**For Contact Information
visit us at
www.kssigngroup.com**

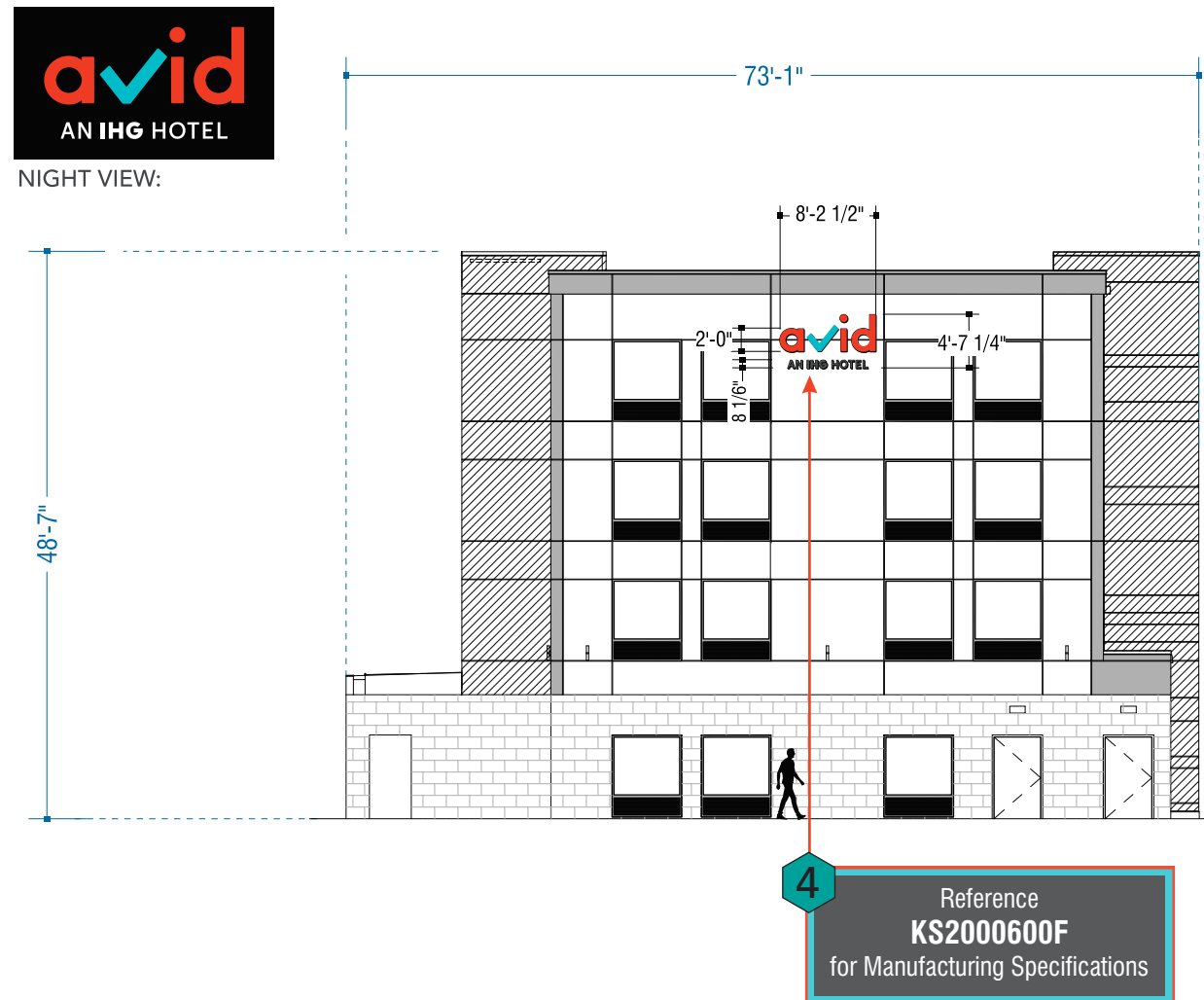




NORTH ELEVATION

DO NOT SHEETROCK WALL WHERE SIGNS ARE LOCATED
Coordinate Pre-Drill / Pre-Wire Installation if needed, as soon as permits are approved.

SCALE: 1/16" = 1'-0"



SOUTH ELEVATION

SCALE: 1/16" = 1'- 0"

DO NOT SHEETROCK WALL WHERE SIGNS ARE LOCATED
Coordinate Pre-Drill / Pre-Wire Installation if needed, as soon as permits are approved.

REVISIONS:	INITIALS & DATE:
▲ Rev w/ updated elev.	MSO 3/9/20
▲ Rev. with original elevations	MSO 3/12/20
▲ -	-
▲ -	-
▲ -	-
▲ -	-
▲ -	-
▲ -	-



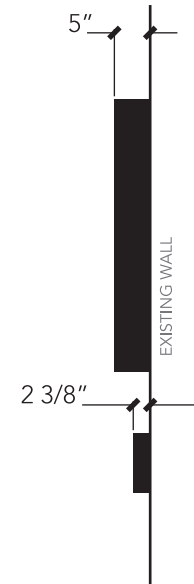


FRONT VIEW

SCALE: 1/4" = 1'-0"

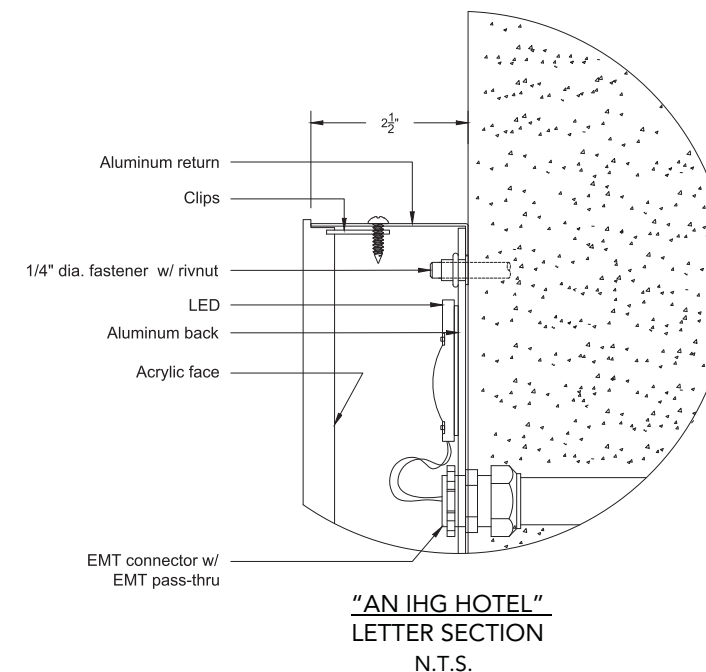
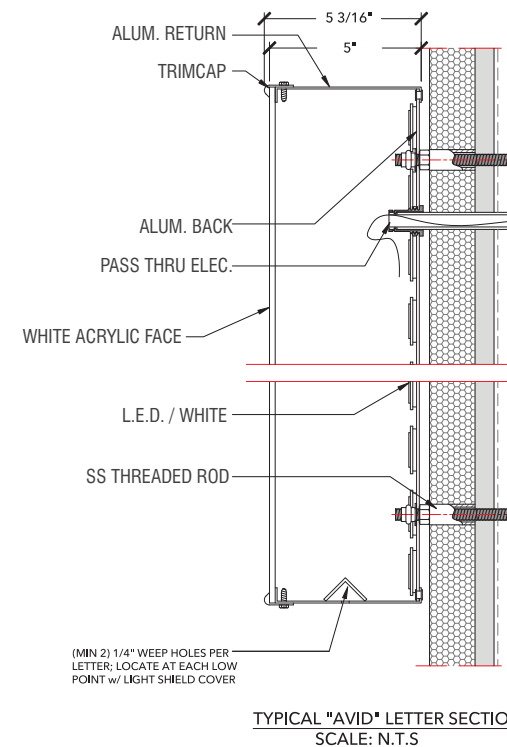


NIGHT VIEW:



SIDE VIEW

SCALE: 1/4" = 1'-0"



PAINT & VINYL

- V2 • 3M 3630-43 LIGHT TOMATO RED
- V4 • 3M 3630-6986 AQUA

SPECIFICATION

- "avid"
- BACKS: 0.063 PREPAINTED WHITE ALUMINUM
 - LEDs: SLOAN PRISM 6500K
 - RETURNS: 0.050" P/P BLACK ALUM COIL
 - TRIMCAP: BLACK
 - FACE: 2406 WHITE ACRYLIC
 - DECORATION: V4

- "AN IHG HOTEL"
- BACKS: ALUMINUM
 - LEDs: WHITE
 - RETURN: ALUMINUM / BLACK
 - TRIMCAP: TRIMLESS
 - FACE: 1/2" #2406 WHITE ACRYLIC
 - DECORATION: NONE

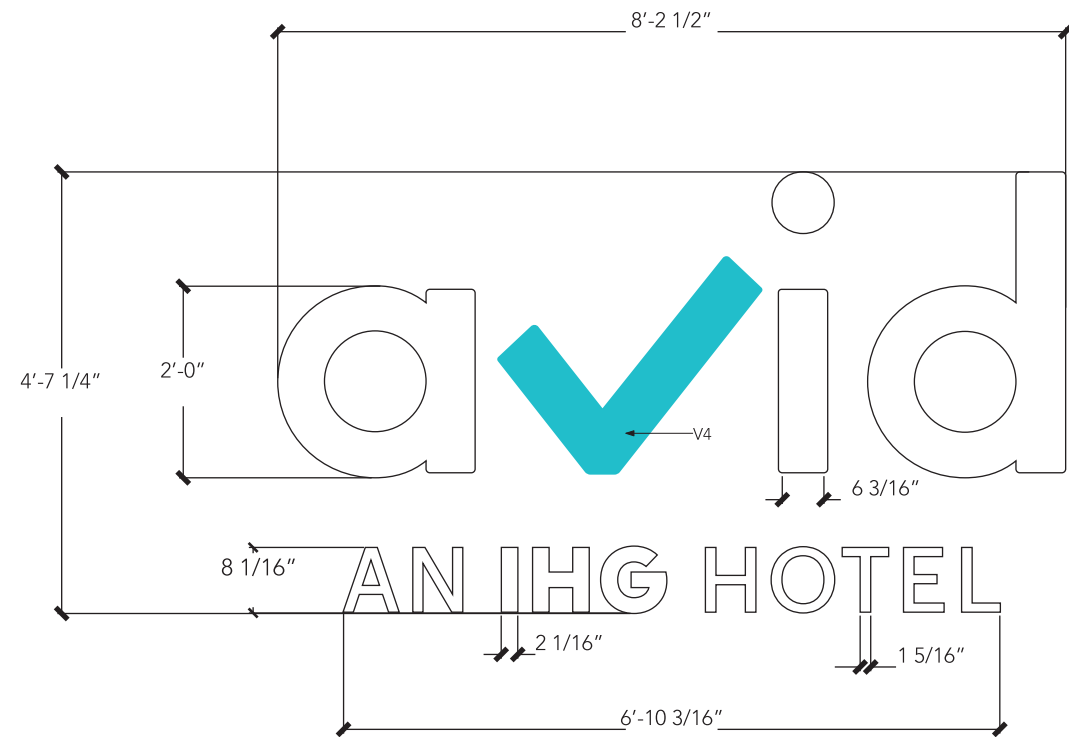
ONLY TO BE USED ON GRAY WALL COLOR

SQUARE FOOTAGE

- 119.71

NOTES

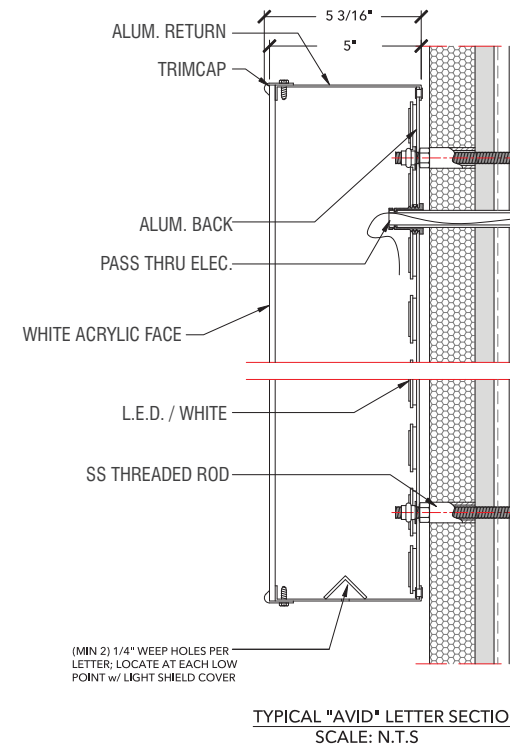
- SHIP IN ONE CRATE
- ALIGN "AN IHG HOTEL" COPY JUST ABOVE THE EIFS REVEAL THAT EXTENDS ACROSS FROM BELOW THE WINDOW
- ALL LETTERSETS TO INCLUDE 40FT WHIPS



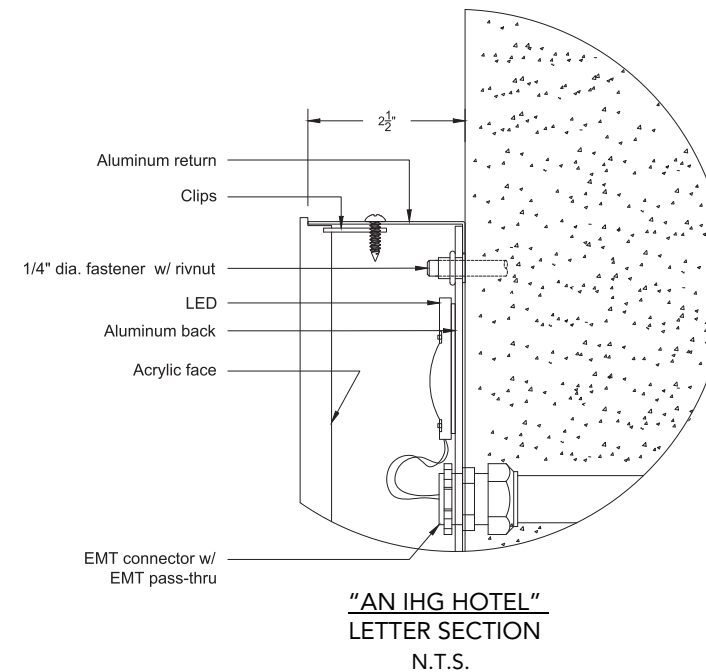
FRONT VIEW
SCALE: 1/2" = 1'-0"



SIDE VIEW
SCALE: 1/2" = 1'-0"



TYPICAL "AVID" LETTER SECTION
SCALE: N.T.S



"AN IHG HOTEL"
LETTER SECTION
N.T.S.

PAINT & VINYL

- P6 • MP N923 BLACK
- V2 • 3M 3630-43 LIGHT TOMATO RED
- V4 • 3M 3630-6986 AQUA
- V11 • 3M 7725-12 BLACK

SPECIFICATION

- "avid"
- BACKS: 0.063" PREPAINTED WHITE ALUMINUM
 - LEDS: SLOAN PRISM 6500K
 - RETURNS: 0.050" P/P BLACK
 - TRIMCAP: BLACK
 - FACE: 7328 WHITE ACRYLIC
 - "V" TO BE 2406 WHITE ACRYLIC
 - DECORATION: FIRST SURFACE V4 ON "v" AND SECONDD SURFACE V2 ON "a id"

"AN IHG HOTEL"

- BACKS: ALUMINUM
- LEDs: WHITE
- RETURN: ALUMINUM / BLACK
- TRIMCAP: TRIMLESS
- FACE: 1/2" #2406 WHITE ACRYLIC
- DECORATION: NONE

SQUARE FOOTAGE

- 37.77

NOTES

- SHIP IN ONE CRATE
- ALIGN "AN IHG HOTEL" COPY JUST ABOVE THE EIFS REVEAL THAT EXTENDS ACROSS FROM BELOW THE WINDOW
- ALL LETTERSETS TO INCLUDE 40FT WHIPS



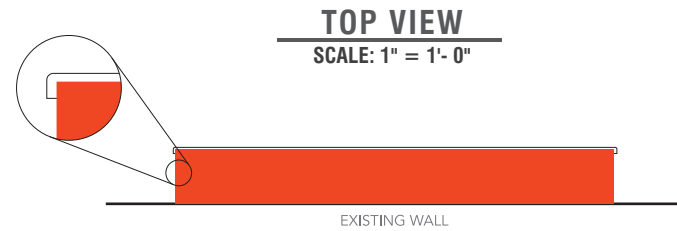
NIGHT VIEW:

REVISIONS:

A	Rev "AN IHG HOTEL" spec
B	-
C	-
D	-
E	-
F	-
G	-
H	-

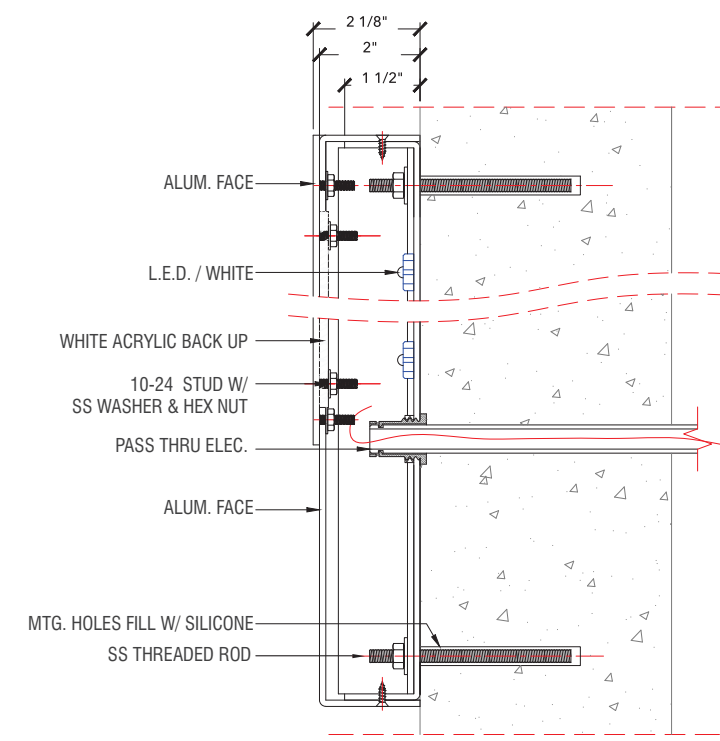
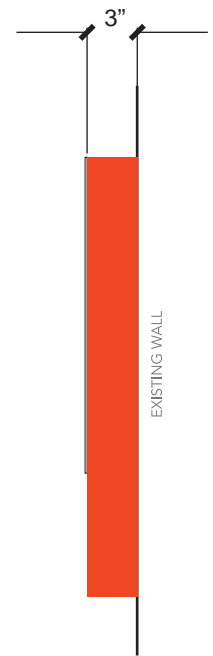
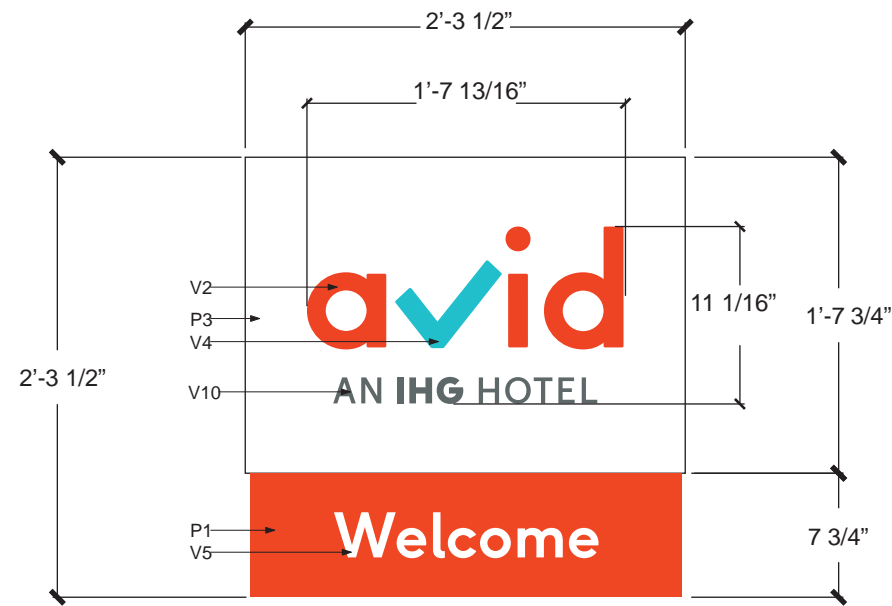
INITIALS & DATE:

MSO	3/12/20
-	-
-	-
-	-
-	-
-	-
-	-
-	-



PAINT & VINYL

- P1 • MP 2061 BRIGHT RED C
- P3 • MP N202 WHITE
- V2 • 3M 3630-43 LIGHT TOMATO RED
- V4 • 3M 3630-6986 AQUA
- V5 • 3M 7725-20 MATTE WHITE
- V10 • 3M 3635-91 DAY/NIGHT FILM SMOKE GRAY



SPECIFICATION

- 0.125" FABRICATED CABINET PAINTED P1 FOR RED PART
- 7328 WHITE ACRYLIC BACKED UP FOR COPY
- 0.125" ALUMINUM SHEET PAINTED P1 AND BRAKE FORMED TO CURVE AROUND RED PANEL
- 2406 WHITE ACRYLIC BACKED UP WITH V4 AND V5 APPLIED 1ST SURFACE FOR LOGO
- 2406 WHITE ACRYLIC BACKED UP WITH V10 APPLIED 1ST SURFACE FOR "IHG" COPY
- LEDs: SLOAN PRISM MINI 6500K

SQUARE FOOTAGE

- 5.25

NOTES

- SHIP IN ONE CRATE
- SEE NEXT PAGE FOR WELCOME SIGN PLACEMENT



FRONT VIEW

SCALE: 1/2" = 1'-0"

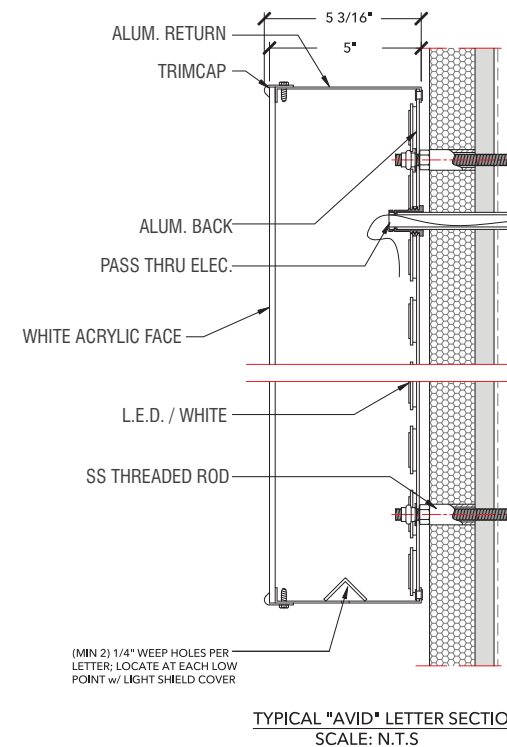


SIDE VIEW

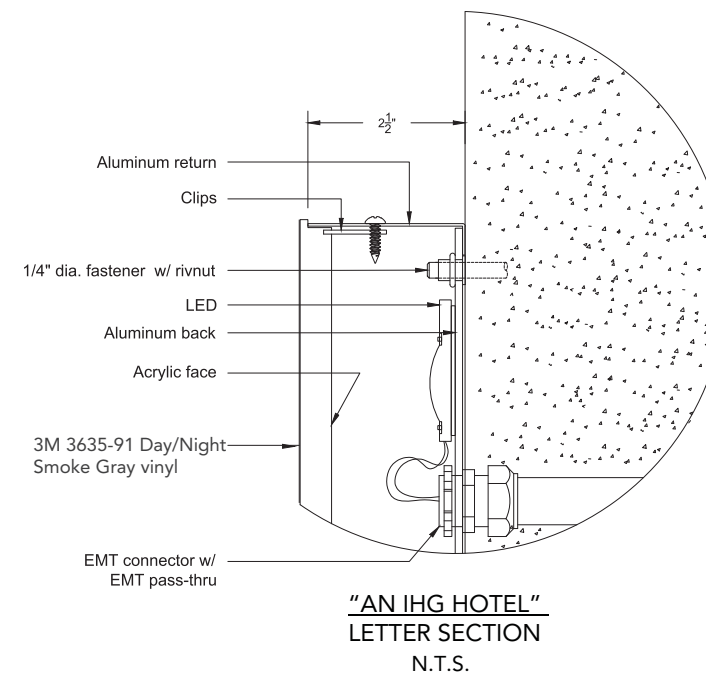
SCALE: 1/2" = 1'-0"



NIGHT VIEW:



TYPICAL "AVID" LETTER SECTION
SCALE: N.T.S



"AN IHG HOTEL" LETTER SECTION
N.T.S.

PAINT & VINYL

- V2 • 3M 3630-43 LIGHT TOMATO RED
- V4 • 3M 3630-6986 AQUA
- V10 • 3M 3635-91 DAY/NIGHT FILM SMOKE GRAY

SPECIFICATION

- "avid"
- BACKS: 0.063" PREPAINTED WHITE ALUMINUM
 - LEDS: SLOAN PRISM 6500K
 - RETURNS: 0.050" P/P BLACK ALUM COIL
 - TRIMCAP: BLACK
 - FACE: 2406 WHITE ACRYLIC
 - DECORATION: V4, V2

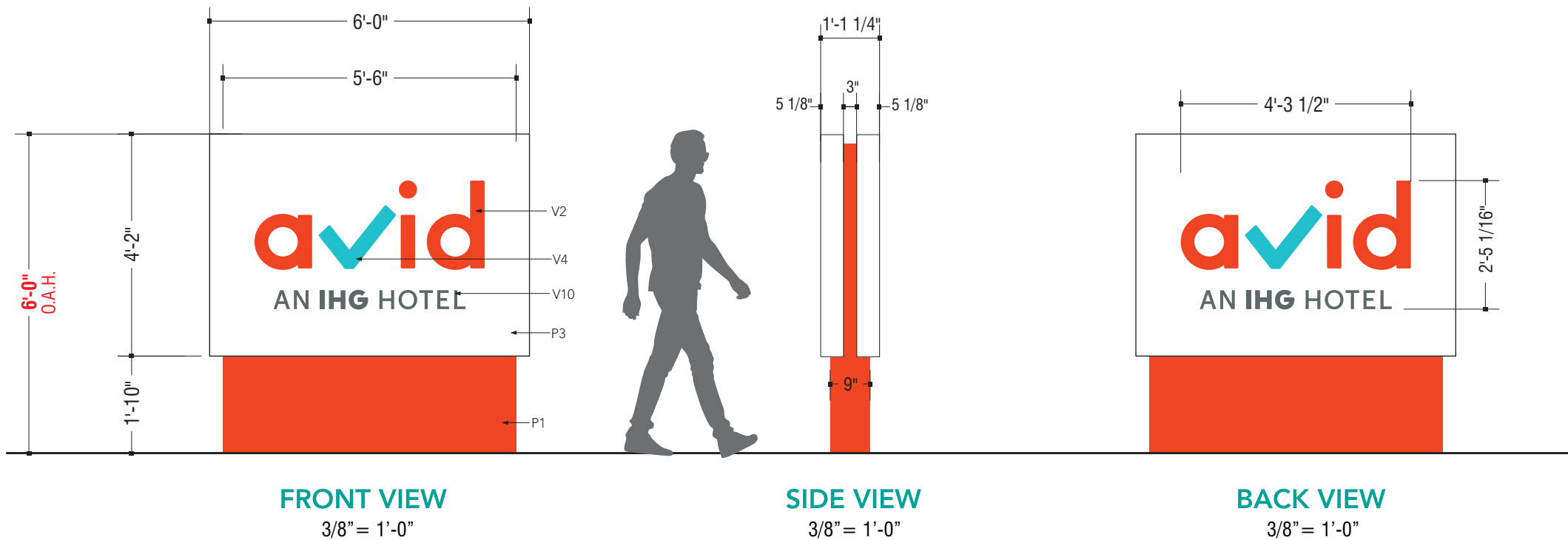
- "AN IHG HOTEL"
- BACKS: ALUMINUM
 - LEDS: WHITE
 - RETURN: ALUMINUM / BLACK
 - TRIMCAP: TRIMLESS
 - FACE: 1/2" #2406 WHITE ACRYLIC
 - DECORATION: V10

SQUARE FOOTAGE

- 37.77

NOTES

- SHIP IN ONE CRATE
- ALIGN "AN IHG HOTEL" COPY JUST ABOVE THE EIFS REVEAL THAT EXTENDS ACROSS FROM BELOW THE WINDOW
- ALL LETTERSETS TO INCLUDE 40FT WHIPS



PAINT & VINYL

- P1 • MP 2061 BRIGHT RED C
- P3 • MP N202 WHITE
- V2 • 3M 3630-43 LIGHT TOMATO RED
- V4 • 3M 3630-6986 AQUA
- V10 • 3M 3635-91 DAY/NIGHT FILM SMOKE GRAY

SPECIFICATION

- 0.125" ALUMINUM FABRICATED BASE PAINTED P1
- 0.125" ALUMINUM FABRICATED FACES PAINTED P3
- 2" DEEP BY 3" WIDE REVEAL INSET TO BE PAINTED P1 ALONG WITH BASE

FACE

- LEDS: SLOAN SIGNBOX 3 DOUBLE SIDED
- BACKED UP ACRYLIC
- V4 APPLIED 1ST SURFACE FOR "V" TIC
- V2 APPLIED 1ST SURFACE FOR "A I D"
- V10 APPLIED 1ST SURFACE FOR TAGLINE

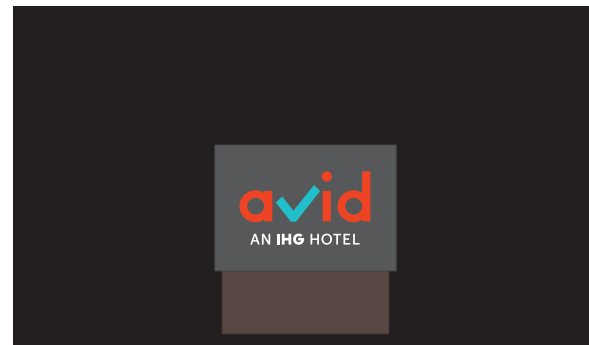
SQUARE FOOTAGE

- 25

NOTES

- PEDESTAL / POLE COVER MUST BE INSTALLED AT OR BELOW FINISHED LANDSCAPE GRADE.
- SHIP IN ONE CRATE

NIGHT VIEW:



SIGN 1



L.E.D.Channel Letters
(Face-Lit)

SIGN 2



L.E.D.Channel Letters
(Face-Lit)



SIGN 3

Illuminated Wall Panel

SIGN 4

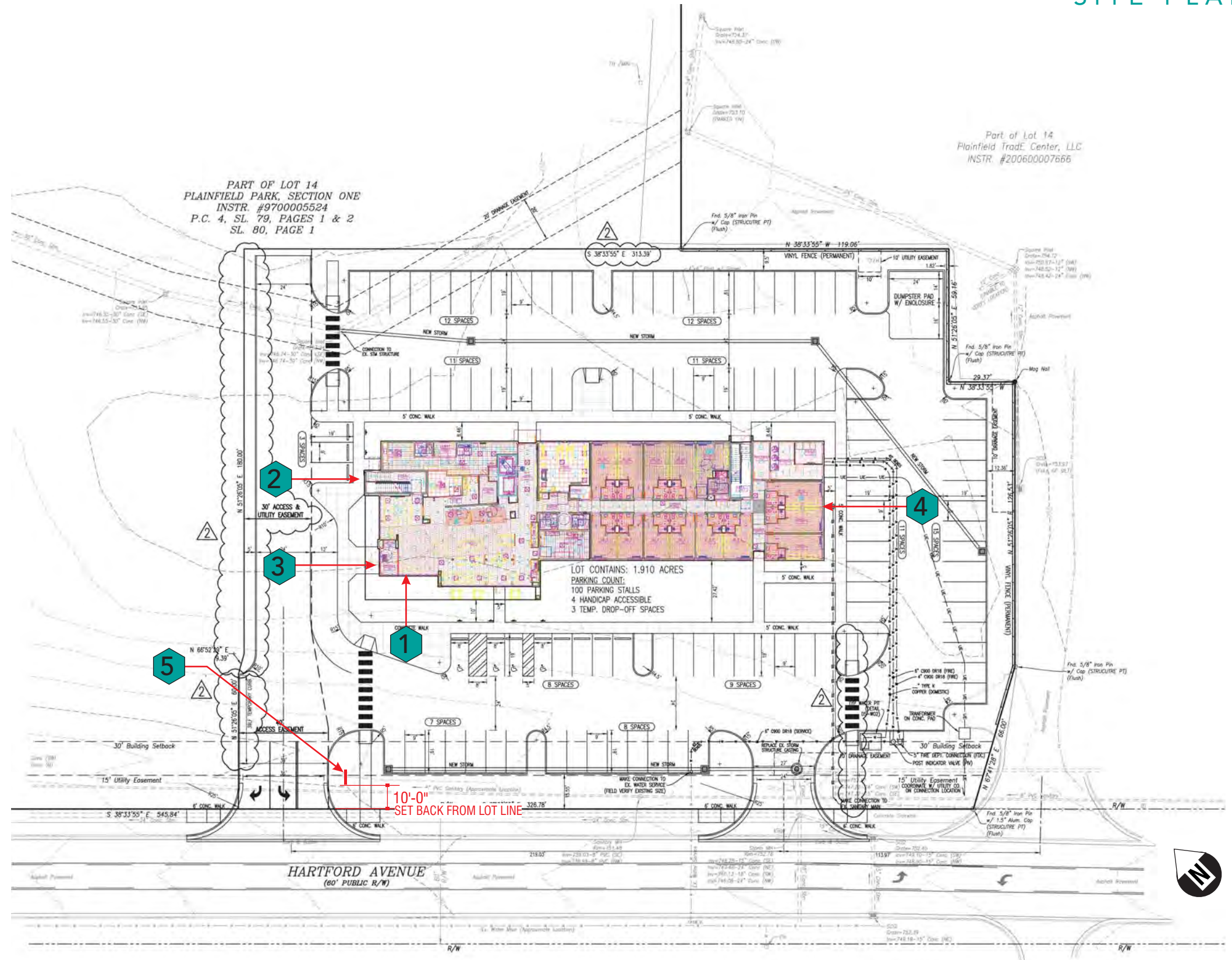


L.E.D.Channel Letters
(Face-Lit)

SIGN 5



Illum. D/F Monument
Sign Location
T.B.D.



REVISIONS:

- ▲ Rev. with updated site plan
- ▲ Show monument w/ set back
- ▲ -
- ▲ -
- ▲ -
- ▲ -
- ▲ -
- ▲ -

INITIALS & DATE:

MSO 3/12/20
MSO 3/13/20



This is an original unpublished drawing submitted for use in connection with a project being planned for you by Kieffer Holding Co. It is not to be reproduced, copied or exhibited in any fashion without the written permission of Kieffer Holding Company.

For Contact Information
visit us at
www.kssigngroup.com

KS Site Plan