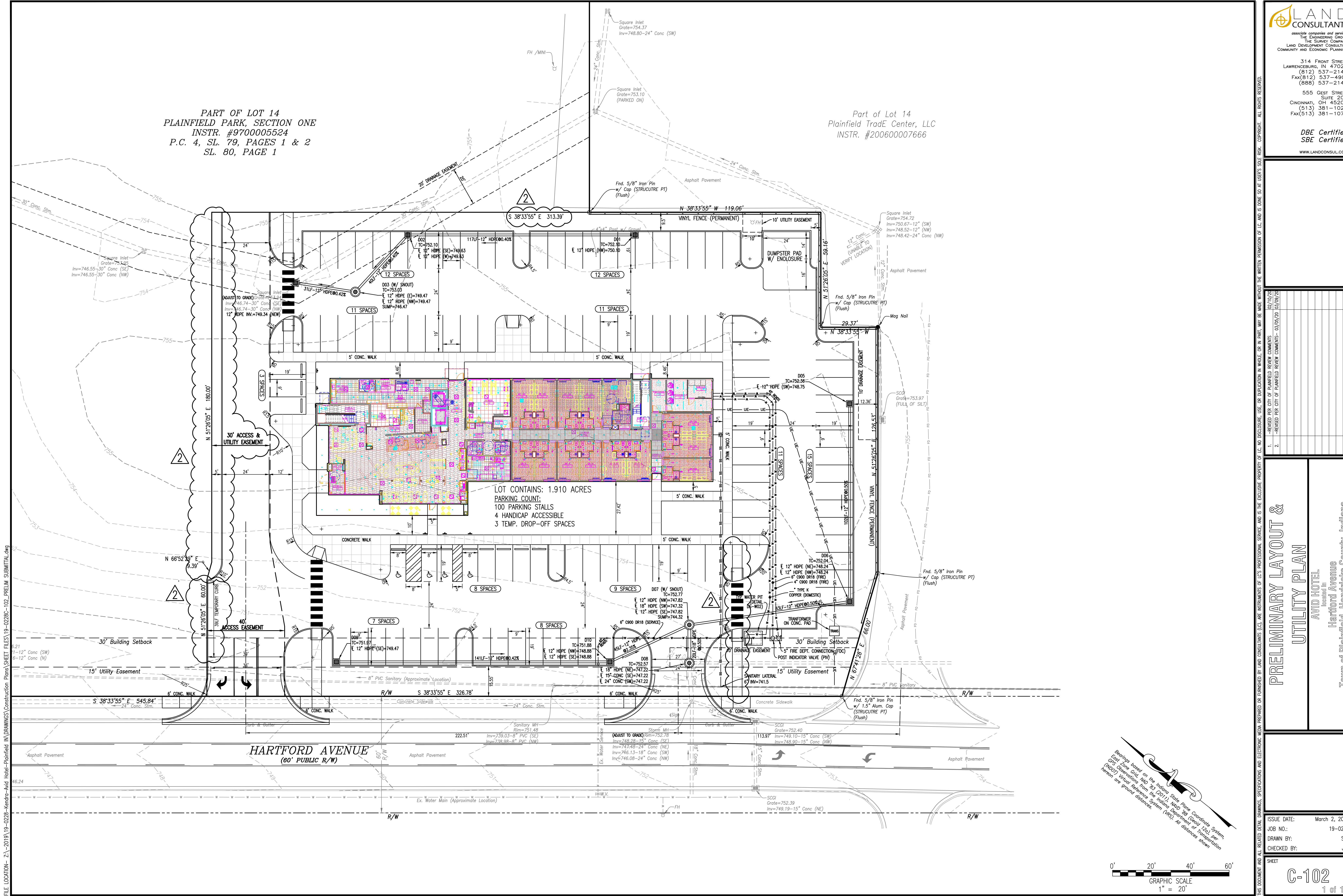


PART OF LOT 14
 PLAINFIELD PARK, SECTION ONE
 INSTR. #9700005524
 P.C. 4, SL. 79, PAGES 1 & 2
 SL. 80, PAGE 1

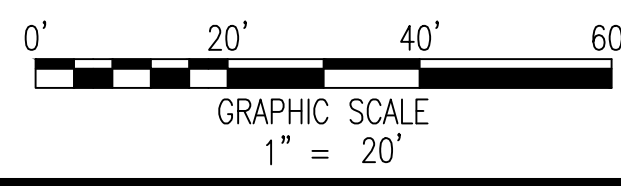
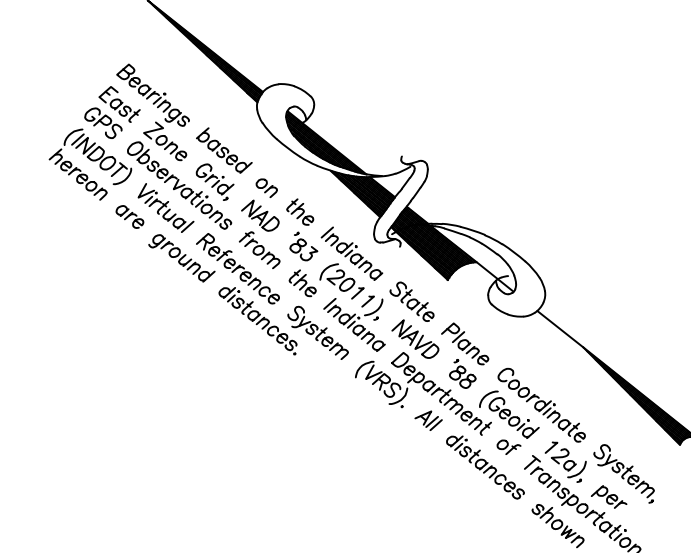
Part of Lot 14
 Plainfield TradE Center, LLC
 INSTR. #200600007666



THIS DOCUMENT AND ALL RELATED DETAIL DRAWINGS, SPECIFICATIONS AND ELECTRONIC MEDIA PREPARED OR FURNISHED BY LAND CONSULTANTS (LC), ARE INSTRUMENTS OF LC'S PROFESSIONAL SERVICE, AND IS THE EXCLUSIVE PROPERTY OF LC. NO DISCLOSURE, USE, OR REPRODUCTION IN WHOLE OR IN PART, MAY BE MADE WITHOUT THE WRITTEN PERMISSION OF LC, AND IS DONE SO AT USER'S SOLE RISK. COPYRIGHT, ALL RIGHTS RESERVED.

Rev.	Description	Date
1.	REVISED PER CITY OF PLAINFIELD REVIEW COMMENTS	02/10/20
2.	REVISED PER CITY OF PLAINFIELD REVIEW COMMENTS	03/05/20

PRELIMINARY LAYOUT & UTILITY PLAN
 AVID HOTEL
 Located in
 Hartford Avenue
 Town of Plainfield, Hendricks County, Indiana



ISSUE DATE: March 2, 2020
 JOB NO.: 19-0228
 DRAWN BY: SJG
 CHECKED BY: JET

FILE LOCATION: Z:\2019\19-0228-Kendra-Avid Hotel-Plainfield\Drawings\Construction\Plans\Sheet Files\19-0228-102_PRELIM_SUBMITTAL.dwg