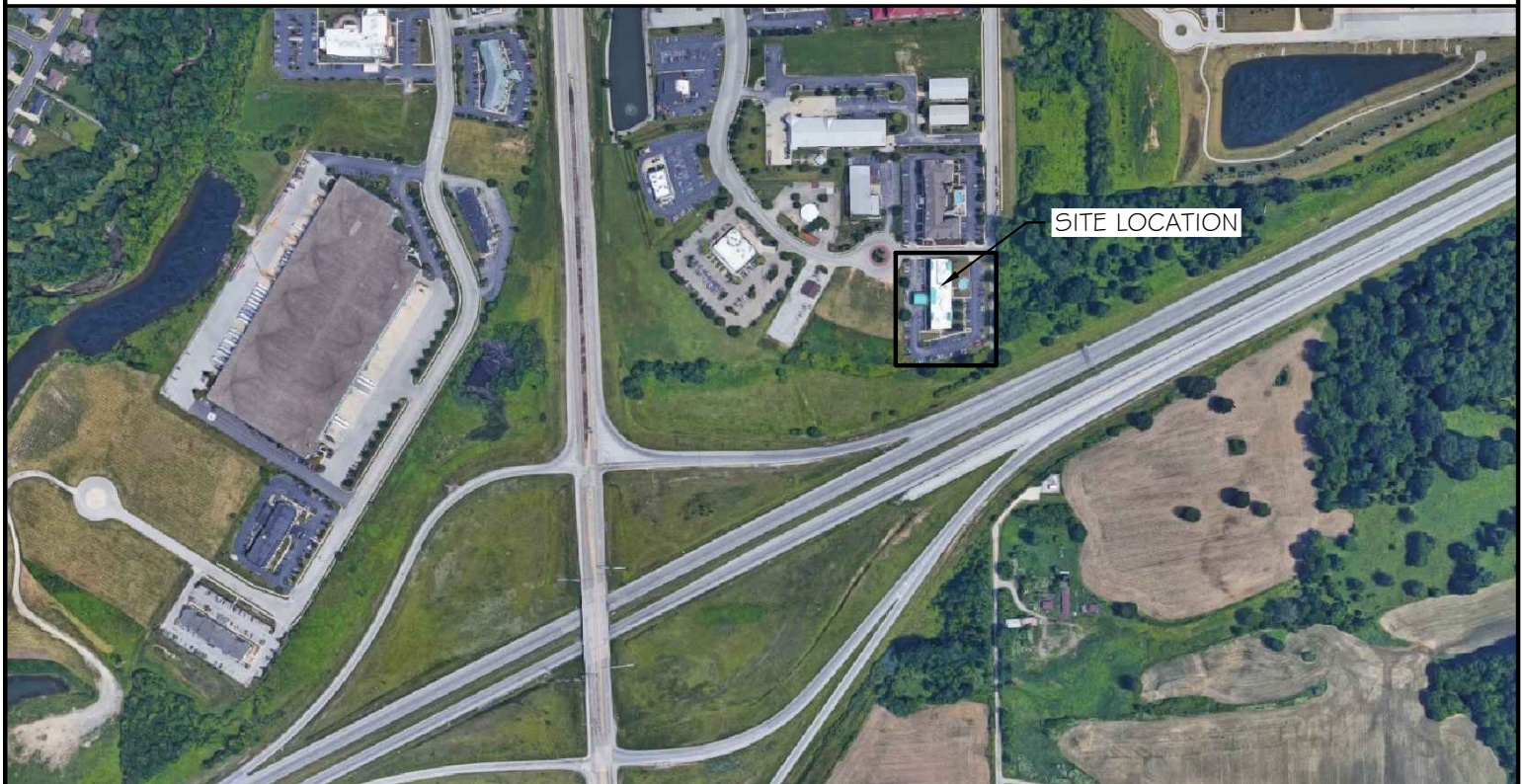


VICINITY MAP



AERIAL VIEW OF SITE

 <p>RAMAKER & ASSOCIATES, INC. 100% EMPLOYEE-OWNED 103 Fifteenth Ave NW, Willmar, MN 56201 608-643-4100 www.Ramaker.com Sauk City, WI • Willmar, MN Woodcliff Lake, NJ • Bayamon, PR</p>	MARK	DATE	DESCRIPTION	PROJECT TITLE:	SCALE: NONE
				HOLIDAY INN EXPRESS PIP	
				PROJECT LOCATION:	ISSUE PHASE PRELIMINARY
				PLAINFIELD, IN	DATE ISSUED 04/17/2020
				SHEET TITLE:	PROJECT NUMBER: 43839
				AREA MAP	SHEET NUMBER: A-1