

1 LANDSCAPE SHEET LAYOUT KEY PLAN

prepared for:



project:  
**Encore by Samaritan**  
**Senior Lifestyle Communities**  
 Plainfield Marketplace, Phase VI A  
 Plainfield IN

revision:	date:	description:

date: 12.05.2019  
 drawn by: kb  
 checked by: jm

certified by:  
**DRAFT**  
**NOT FOR CONSTRUCTION**

Landscape Architect is the author and owner of these drawings and specifications. They shall be used solely for the purposes of this project and shall not be used for any other Project or Work without expressed permission of the Landscape Architect.

**SHEET LAYOUT**  
**KEY PLAN**

**L100**

PLANT SCHEDULE

QTY	BOTANICAL NAME	COMMON NAME	SIZE	CONTAINER	REMARKS
23	Acer saccharum	Sugar Maple	2.5" Cal.	B&B	
6	Betula nigra	River Birch	8-10" Ht.	B&B	Multi-stem
11	Carpinus betulus 'Fastigiata'	European Hornbeam	2.5" Cal.	B&B	High branching
2	Ginkgo biloba	Maidenhair Tree	2.5" Cal.	B&B	Male
1	Quercus bicolor	Swamp White Oak	2.5" Cal.	B&B	
1	Quercus imbricaria	Shingle Oak	2.5" Cal.	B&B	
4	Quercus rubra	Red Oak	2.5" Cal.	B&B	
8	Ulmus 'Patriot'	Patriot Elm	2.5" Cal.	B&B	

QTY	BOTANICAL NAME	COMMON NAME	SIZE	CONTAINER	REMARKS
11	Picea abies	Norway Spruce	8" Ht.	B&B	
75	Thuja occidentalis 'Smaragd'	Emerald Green Arborvitae	6" Ht.	B&B	

QTY	BOTANICAL NAME	COMMON NAME	SIZE	CONTAINER	REMARKS
18	Amelanchier x grandiflora 'Autumn Brilliance'	'Autumn Brilliance' Serviceberry	8" Ht.	B&B	
2	Cercis canadensis	Eastern Redbud	8" Ht.	B&B	Multi-stem
2	Cornus florida	Flowering Dogwood	1.5" Cal.	B&B	

QTY	BOTANICAL NAME	COMMON NAME	SIZE	CONTAINER	REMARKS
29	Buxus x 'Green Velvet'	Buxwood	18" Ht.	Cont/B&B	
49	Cornus sericea 'Bailey'	Red Twig Dogwood	24" Ht.	Cont/B&B	
29	Fothergilla gardenii	Dwarf Fothergilla	24" Ht.	Cont/B&B	
51	Hydrangea paniculata 'Limelight' TM	Limelight Hydrangea	24" Ht.	Cont/B&B	
21	Hydrangea paniculata 'Little Lime'	Little Lime Hydrangea	24" Ht.	Cont/B&B	
42	Hydrangea quercifolia	Oakleaf Hydrangea	24" Ht.	Cont/B&B	
44	Ilex virginica 'Henry's Garnet'	Henry's Garnet Sweetgum	24" Ht.	Cont/B&B	
23	Ilex virginica 'Little Henry' TM	Virginia Sweetgum	24" Ht.	Cont/B&B	
12	Juniperus scopulorum 'Skyrocket'	Skyrocket Juniper	5" Ht.	Cont/B&B	
29	Syringa meyeri 'Palibin'	Dwarf Korean Lilac	24" Ht.	Cont/B&B	
121	Taxus x media 'Densiformis'	Dense Yew	24" Ht.	Cont/B&B	
78	Taxus x media 'Everlow'	Everlow Yew	18" Ht.	Cont/B&B	
37	Taxus x media 'Hicksii'	Hicks Yew	24" Ht.	Cont/B&B	
5	Viburnum dentatum	Arrowwood Viburnum	24" Ht.	Cont/B&B	

QTY	BOTANICAL NAME	COMMON NAME	SIZE	CONTAINER	REMARKS
20	Calamagrostis x acutiflora 'Karl Foerster'	Feather Reed Grass	24" Ht.	Cont.	
40	Panicum virgatum 'Heavy Metal'	Blue Switch Grass	24" Ht.	Cont.	
85	Panicum virgatum 'Shenandoah'	Switch Grass	24" Ht.	Cont.	

QTY	BOTANICAL NAME	COMMON NAME	SIZE	CONTAINER	SPACING	REMARKS
8	Amorpha hibernica 'Halfway to Arkansas'	Arkansas Blue-star	1 gal.	Cont.	24" o.c.	
8	Echinacea purpurea	Purple Coneflower	1 gal.	Cont.	24" o.c.	
28	Heuchera micrantha 'Palace Purple'	Palace Purple Coral Bells	1 gal.	Cont.	18" o.c.	
58	Hosta x 'Frances'	Plantain Lily	1 gal.	Cont.	24" o.c.	
29	Hosta x 'Patriot'	Patriot Hosta	1 gal.	Cont.	24" o.c.	
93	Liatris spicata 'Kobold'	Spike Gayfeather	1 gal.	Cont.	24" o.c.	
18	Liriope muscari 'Big Blue'	Big Blue Lilyturf	1 gal.	Cont.	18" o.c.	
57	Nepeta x 'faassenii' 'Walkers Low'	Walkers Low Catmint	1 gal.	Cont.	36" o.c.	
47	Pervoskia atriplicifolia 'Fillgran'	Fillgran Russian Sage	1 gal.	Cont.	36" o.c.	
45	Rudbeckia fulgida 'Goldstrum'	Black-eyed Susan	1 gal.	Cont.	24" o.c.	
38	Sedum x 'Autumn Fire'	Autumn Fire Sedum	1 gal.	Cont.	36" o.c.	
382	Sporobolus heterolepis	Prairie Dropseed	1 gal.	Cont.	36" o.c.	

PLAINFIELD ORDINANCE CALCULATIONS

LABEL	LOCATION / AREA	LENGTH	REQUIRED AREA (SF)	DESIGNED AREA (SF)	REQUIRED PLANT VALUE	DESIGNED PLANT VALUE
EFD	EAST FOUNDATION	318	636	1350	3.2	4.95
ESY	EAST SIDE YARD	517	N/A	N/A	5.2	5.4
EGF	EAST GARAGE FOUNDATION	340	680	1,176	3.4	6.4
NFD	NORTH FOUNDATION	100	200	800	1	2.8
NGF	NORTH GARAGE FOUNDATION	166	332	922	1.7	6.8
NRY	NORTH REAR YARD	503	N/A	N/A	5	5.5
SFD	SOUTH FOUNDATION	258	516	1458	2.6	5.9
SGF	SOUTH GARAGE FOUNDATION	166	332	1328	1.7	4.45
SFY	SOUTH FRONT YARD	450	N/A	N/A	4.5	6.5
WFD	WEST FOUNDATION	318	636	1350	3.2	6.25
WGF	WEST GARAGE FOUNDATION	240	480	497	2.4	4.0
WSY	WEST SIDE YARD	500	N/A	N/A	5	6.15
PP	PARKING PERIMETER				HEDGE 3' O.C.	HEDGE 3' O.C.

PLAINFIELD ORDINANCE NOTES

- FRONT / SIDE / REAR YARD  
 - GC ON ALL ADJACENT PROPERTIES = LEVEL 1, PLANT MIX VALUE OF 1.0 PER 100 LF.
- FOUNDATION PLANTING  
 - AREA = 2 TIMES LENGTH OF WALL  
 - TO START WITHIN 15' OF WALL AND MIN. DEPTH DIMENSION OF 6'  
 - LEVEL 1 PLANTINGS = PLANT MIX VALUE OF 1.0 PER 100 LF
- PARKING LOT INTERIOR  
 - ONE ISLAND, 6'X18' MIN. PER 15 SPACES  
 - ONE TREE PER ISLAND
- PARKING LOT PERIMETER  
 - SCREEN WHEN ADJACENT FRONT YARD, FRONT, SIDE OR REAR BUFFER YARD.  
 - HEDGE ROW, 3' O.C. 24"-30" HEIGHT AT PLANTING, OR  
 - PLANTS IN COMBINATION WITH DECORATIVE FENCE, WALL OR BERM TO THE PLANT UNIT VALUE OF 1.5

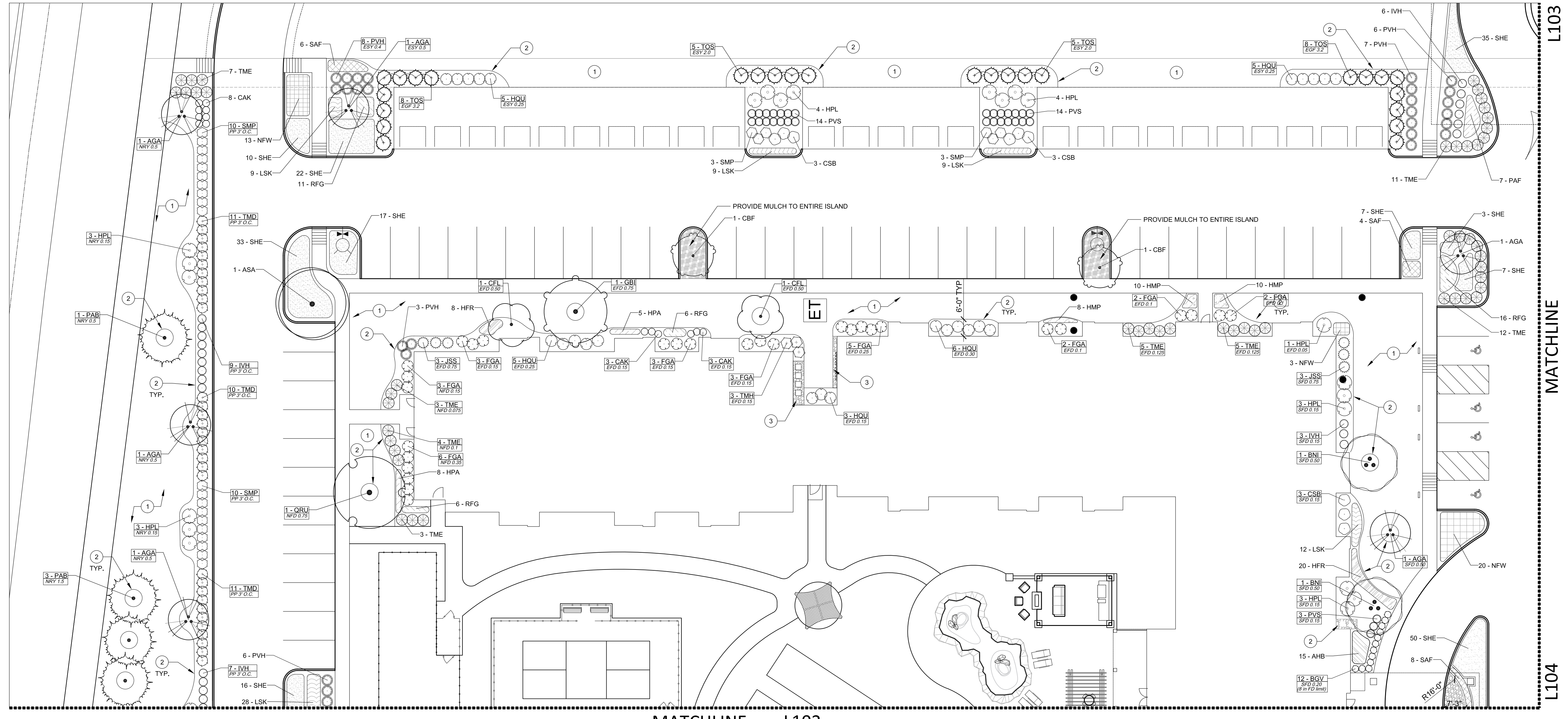
REFERENCE NOTES SCHEDULE

SYMBOL	DESCRIPTION	DETAIL
1	LAWN	
2	SPADE EDGE	
3	LANDSCAPE GRAVEL: SEE DETAIL	6/L103



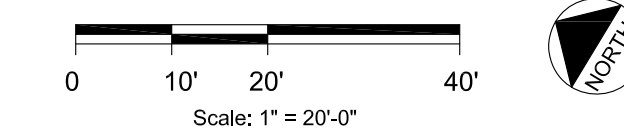
GENERAL PLANTING NOTES

- PLANT MATERIAL SHALL BE INSTALLED AND MAINTAINED BY A QUALIFIED AND EXPERIENCED LANDSCAPE CONTRACTOR.
- LOCATE AND VERIFY ALL PUBLIC AND PRIVATE UTILITIES PRIOR TO STARTING LANDSCAPE WORK.
- STAKE AND CONFIRM ALL DIMENSIONS, GRADES, AND PLANT LAYOUT PRIOR TO STARTING WORK. REPORT ANY DISCREPANCIES TO LANDSCAPE ARCHITECT IMMEDIATELY.
- SEED ALL AREAS DISTURBED BY CONTRACTOR'S OPERATIONS, INCLUDING AREAS BEYOND.
- PLANTING BEDS SHALL RECEIVE SPADE EDGE UNLESS OTHERWISE NOTED.
- CONTRACTOR SHALL PROVIDE PLANT MATERIAL IN QUANTITIES AND SPECIES SHOWN ON PLANS. SUBSTITUTIONS SHALL NOT BE ALLOWED UNLESS SUBMITTED IN WRITING AT LEAST 10 DAYS PRIOR TO BID DATE AND APPROVED VIA ADDENDUM BY LANDSCAPE ARCHITECT.
- AMEND OR INSTALL TOPSOIL MEETING ASTM D5268 STANDARDS, TOPSOIL SHALL BE FREE OF DELETERIOUS MATERIALS OR EXTRANEIOUS MATERIALS LARGER THAN 1". VERIFY DEPTH AND QUALITY OF TOPSOIL PRIOR TO PLANT INSTALLATION. LAWN AREAS SHALL HAVE A MIN. OF 4" TOPSOIL AND PLANTING BEDS A MIN. OF 12". TOPSOIL SHALL BE STOCKPILED AND REUSED ON SITE. WHERE QUANTITIES ARE INSUFFICIENT, TOPSOIL MAY BE IMPORTED FROM OFF SITE. DO NOT OBTAIN FROM BOGS, MARSHES, WETLANDS, OR AGRICULTURAL LAND. APPLY INORGANIC AMENDMENTS, ORGANIC AMENDMENTS, AND FERTILIZERS AS NEEDED FOR LONG TERM PLANT HEALTH.
- ROOT BALL SHALL MEET OR EXCEED SIZES SET FORTH IN CURRENT AMERICAN STANDARDS FOR NURSERY STOCK.
- PROVIDE 3" SHREDDED HARDWOOD MULCH IN ALL PLANTING BEDS AND IN 6" DIA AROUND ALL TREES UNLESS OTHERWISE NOTED.
- PROVIDE PRE-EMERGENT HERBICIDE ON PLANTING BEDS AT RATES PER MANUFACTURER'S DIRECTIONS.
- TREES SHALL NOT BE STAKED EXCEPT WITH APPROVAL FROM LANDSCAPE ARCHITECT FOR ACCOMMODATION OF ENVIRONMENTAL CONDITIONS.
- INSTALL ALL PLANT MATERIAL IN ACCORDANCE WITH LOCAL CODES AND ORDINANCES. CONTRACTOR SHALL OBTAIN ALL REQUIRED PERMITS AS REQUIRED BY LOCAL JURISDICTIONS.
- PLANT MATERIAL AND WORKMANSHIP SHALL BE WARRANTED FOR A PERIOD OF 1 YEAR FROM SUBSTANTIAL COMPLETION. REPLACE ALL PLANTS MORE THAN 1/4 DEAD AS SOON AS WEATHER CONDITIONS ALLOW THROUGHOUT WARRANTEE PERIOD.
- QUANTITIES SHOWN IN PLANT SCHEDULE ARE FOR LANDSCAPE ARCHITECT'S PURPOSES AND FOR LOCAL REGULATORY REVIEW. CONTRACTOR IS RESPONSIBLE TO PROVIDE PLANTS IN QUANTITIES AND SPACING AS DEPICTED ON PLANTING PLANS. IF DISCREPANCIES EXIST QUANTITIES SHOWN ON PLANS SHALL DICTATE.



1 PLANTING PLAN

MATCHLINE L102



prepared by:

integrating people and nature®  
 302 Main Street, Beech Grove, Indiana 46107  
 p. 317-889-1775  
 www.maderdesignllc.com

prepared for:

Know what's below.  
 Call before you dig.

project:

**Encore by Samaritan Senior Lifestyle Communities**  
 Plainfield Marketplace, Phase VI A  
 Plainfield IN

revision:    date:    description:


date: 12.05.2019  
 drawn by: kb  
 checked by: jm

certified by:

**DRAFT NOT FOR CONSTRUCTION**

Landscape Architect is the author and owner of these drawings and specifications. They shall be used solely for the purposes of this project and shall not be used for any other Project or Work without expressed permission of the Landscape Architect.

PLANTING PLAN

L101







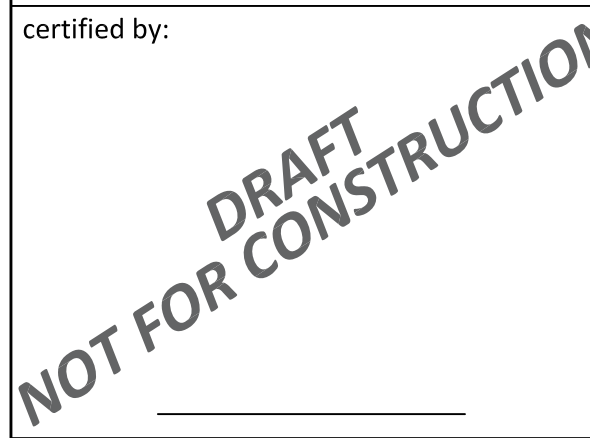
prepared for:



project:  
**Encore by Samaritan Senior Lifestyle Communities**  
 Plainfield Marketplace, Phase VI A  
 Plainfield IN

revision:	date:	description:

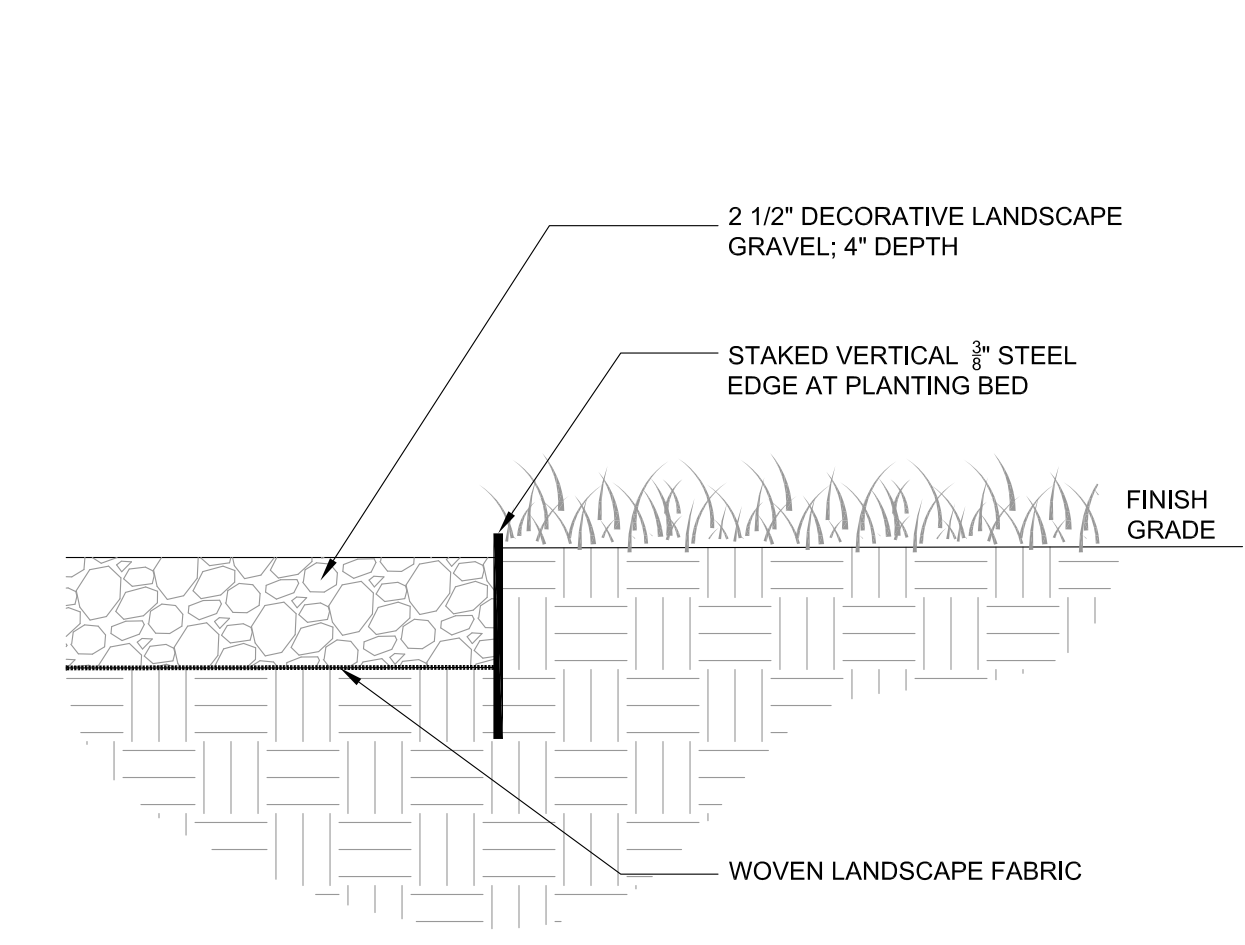
date: 12.05.2019  
 drawn by: kb  
 checked by: jm

certified by:  


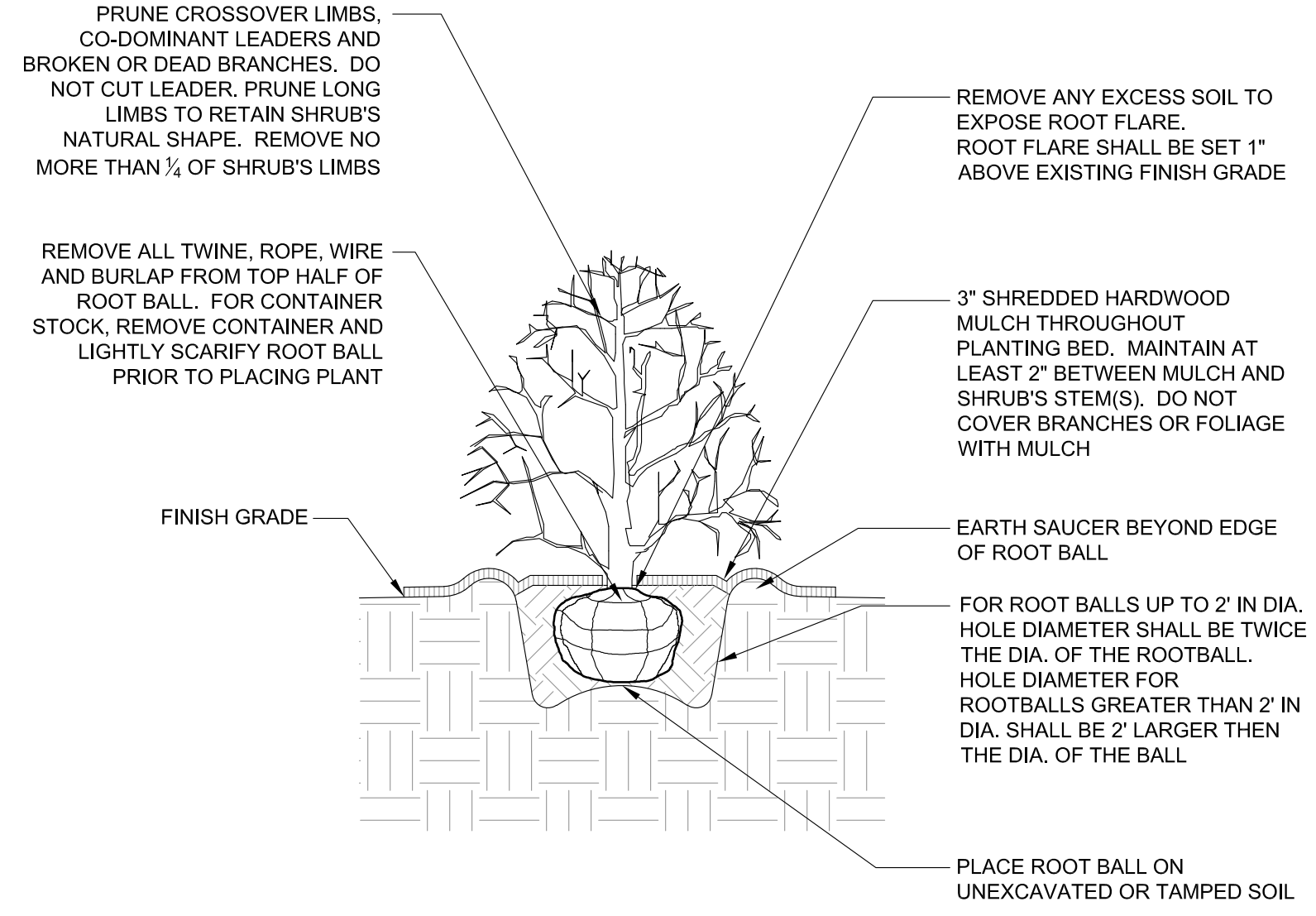
Landscape Architect is the author and owner of these drawings and specifications. They shall be used solely for the purposes of this project and shall not be used for any other Project or Work without expressed permission of the Landscape Architect.

**PLANTING DETAILS**

**L105**

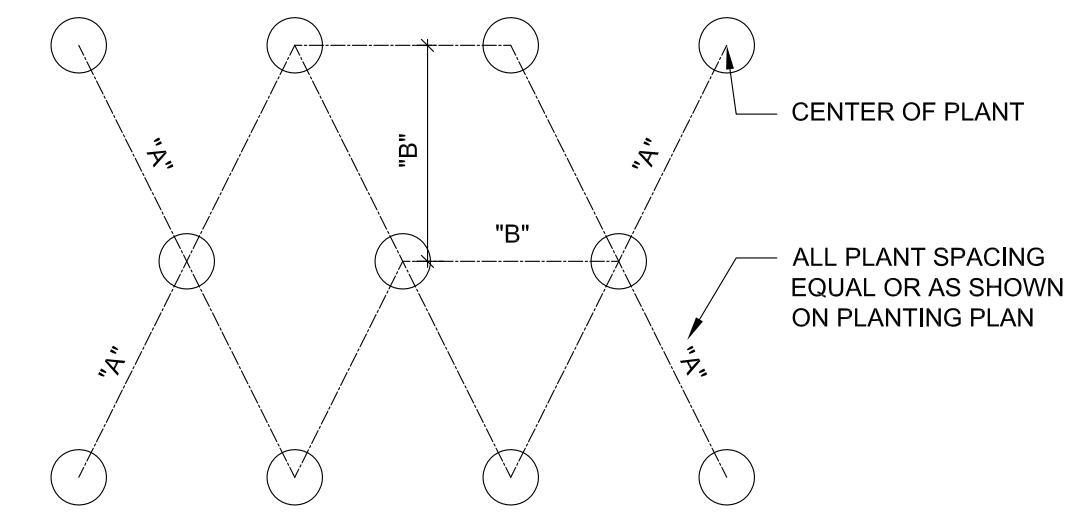


**6 LANDSCAPE GRAVEL WITH STEEL EDGE**  
 1" = 1'-0" P-SA-02

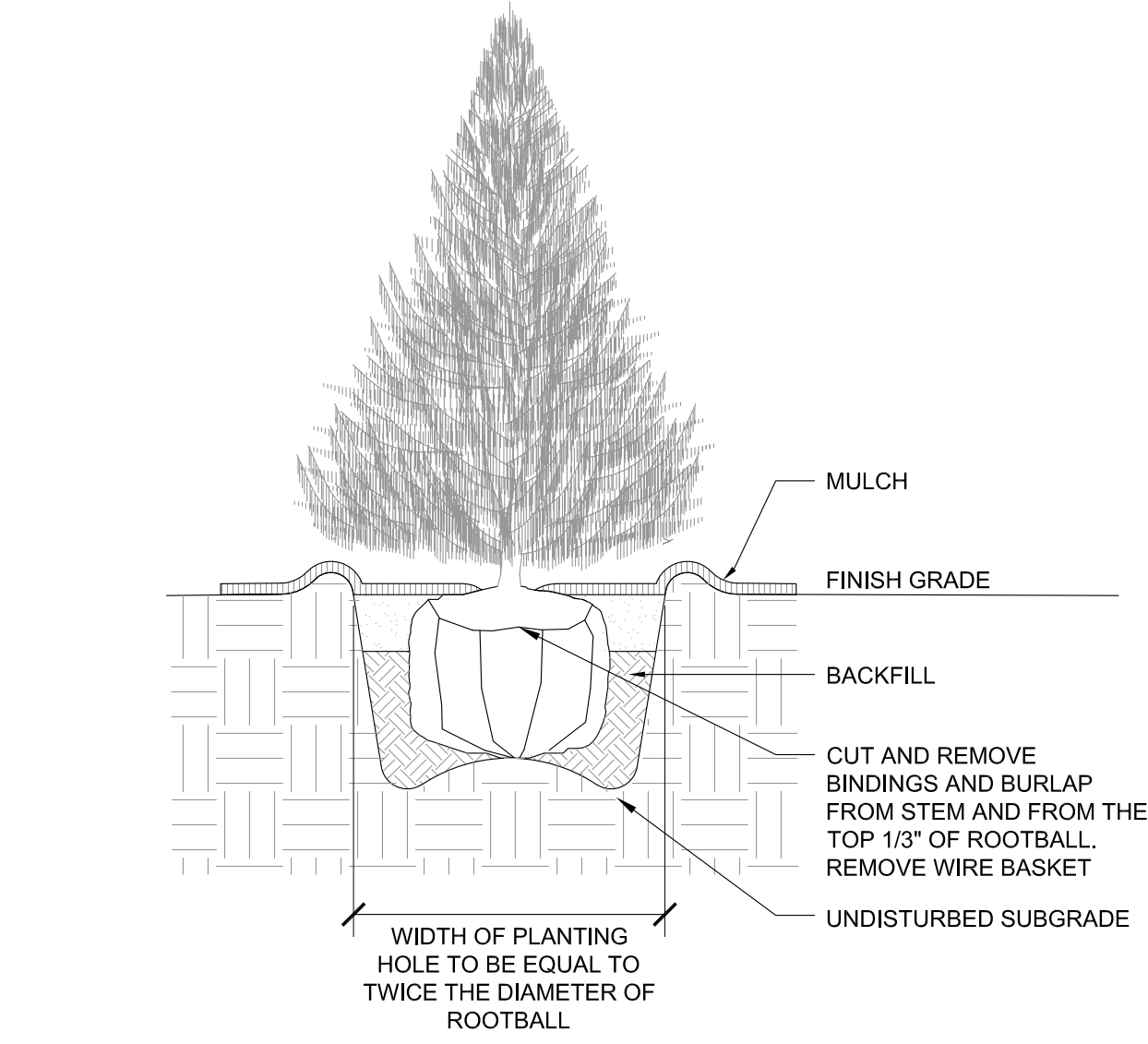


**3 SHRUB PLANTING**  
 1" = 1'-0" P-SA-03

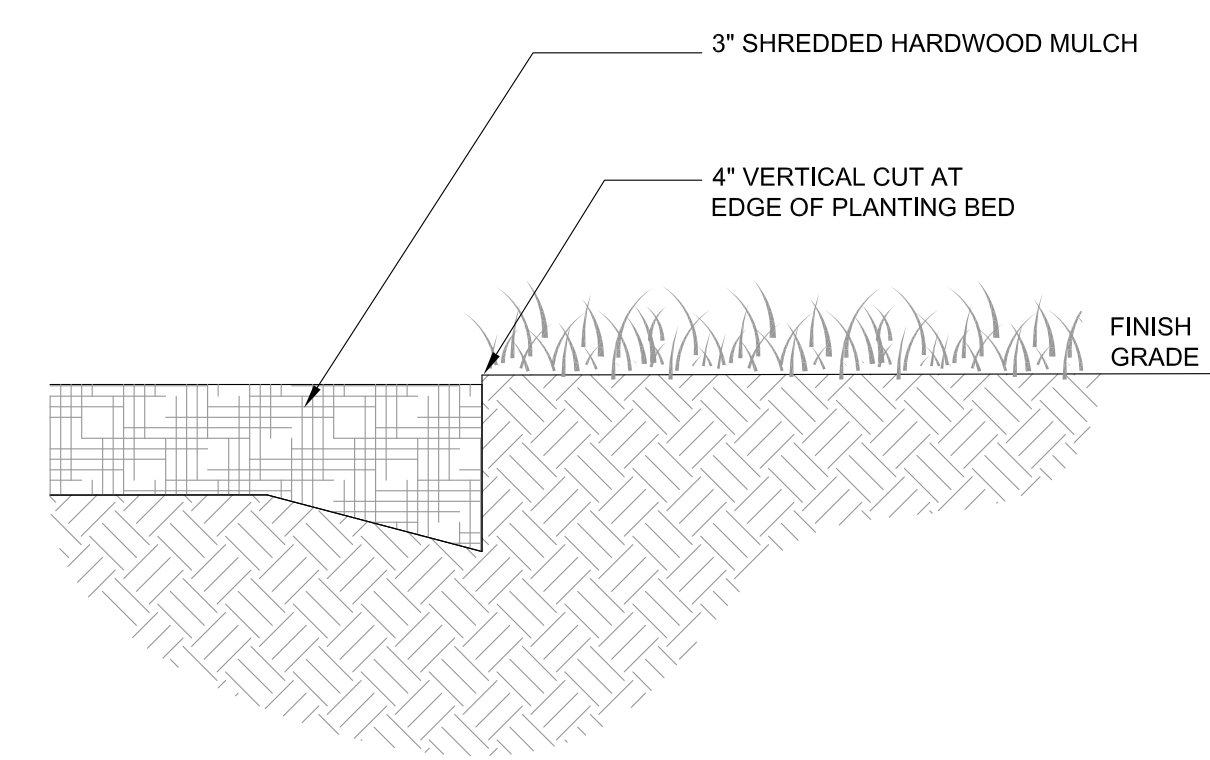
"A"	"B"	NO. OF PLANTS/SF
6" O.C.	5.2'	4.61
8" O.C.	6.93'	2.5
10" O.C.	8.66'	1.66
12" O.C.	10.4'	1.15
15" O.C.	13.0'	.738
18" O.C.	15.6'	.512
24" O.C.	20.8'	.29
30" O.C.	26.0'	.185
36" O.C.	30.0'	.128



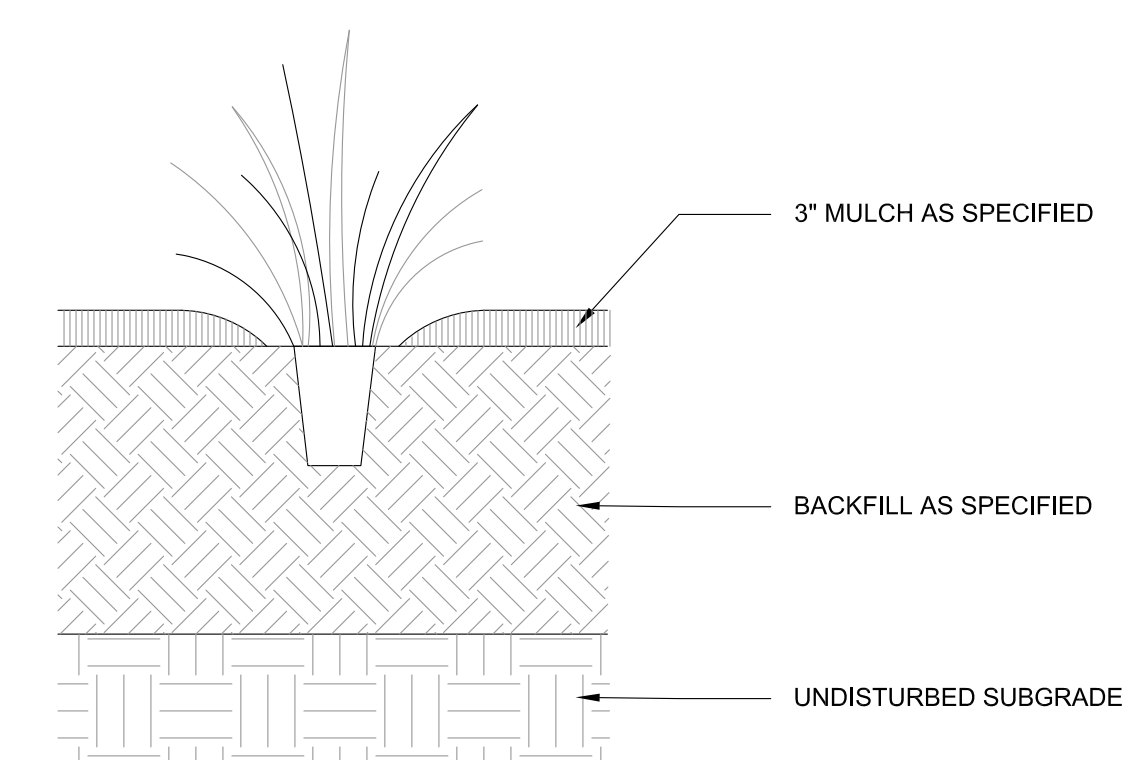
**5 PLANT SPACING**  
 1" = 1'-0" P-SA-05



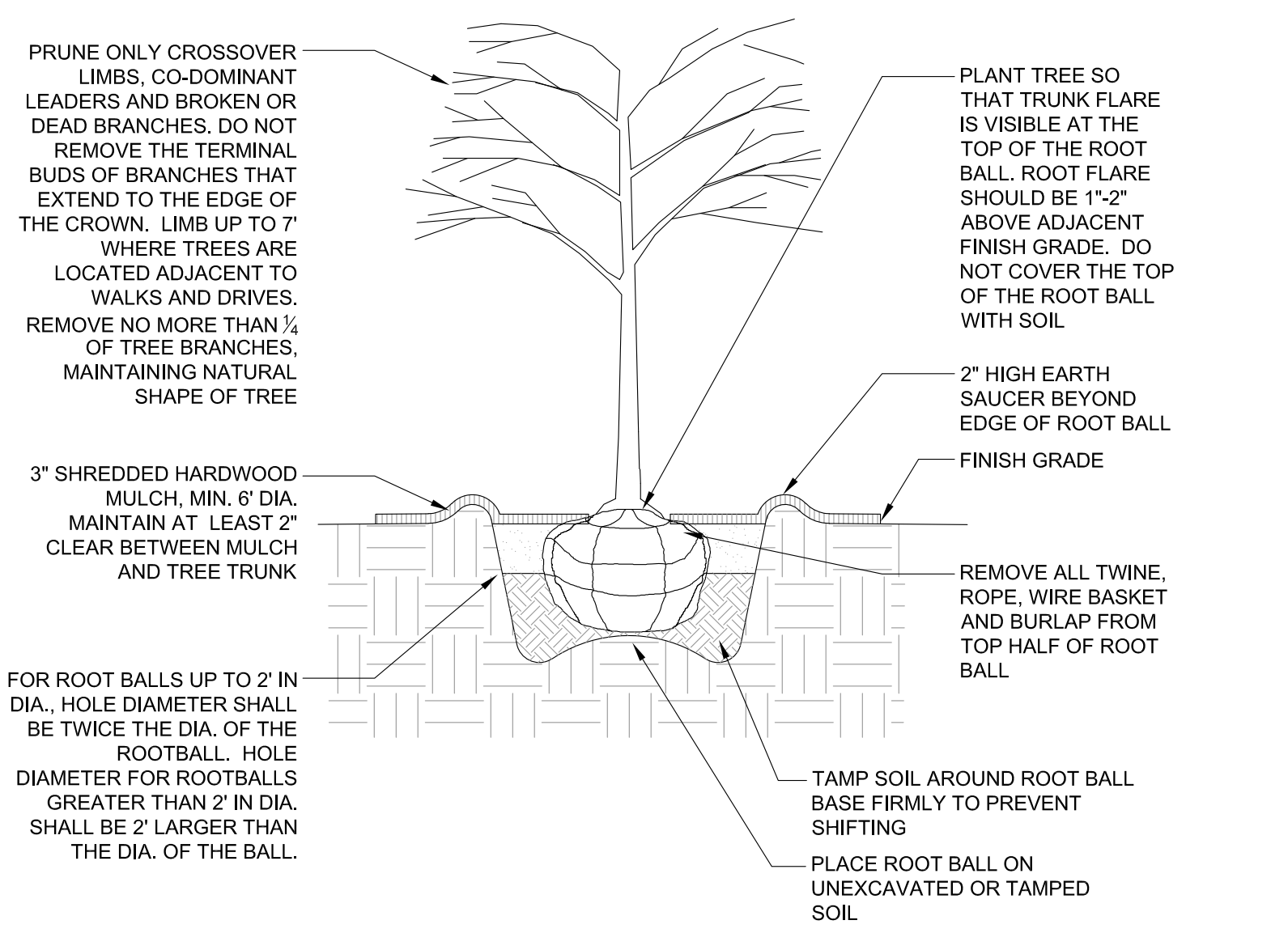
**2 EVERGREEN TREE PLANTING**  
 1" = 1'-0" P-SA-02



**7 SPADE EDGE**  
 1" = 1'-0" P-SA-08



**4 PERENNIALS & GRASSES**  
 1" = 1'-0" P-SA-04



**1 TREE PLANTING**  
 1" = 1'-0" P-SA-01