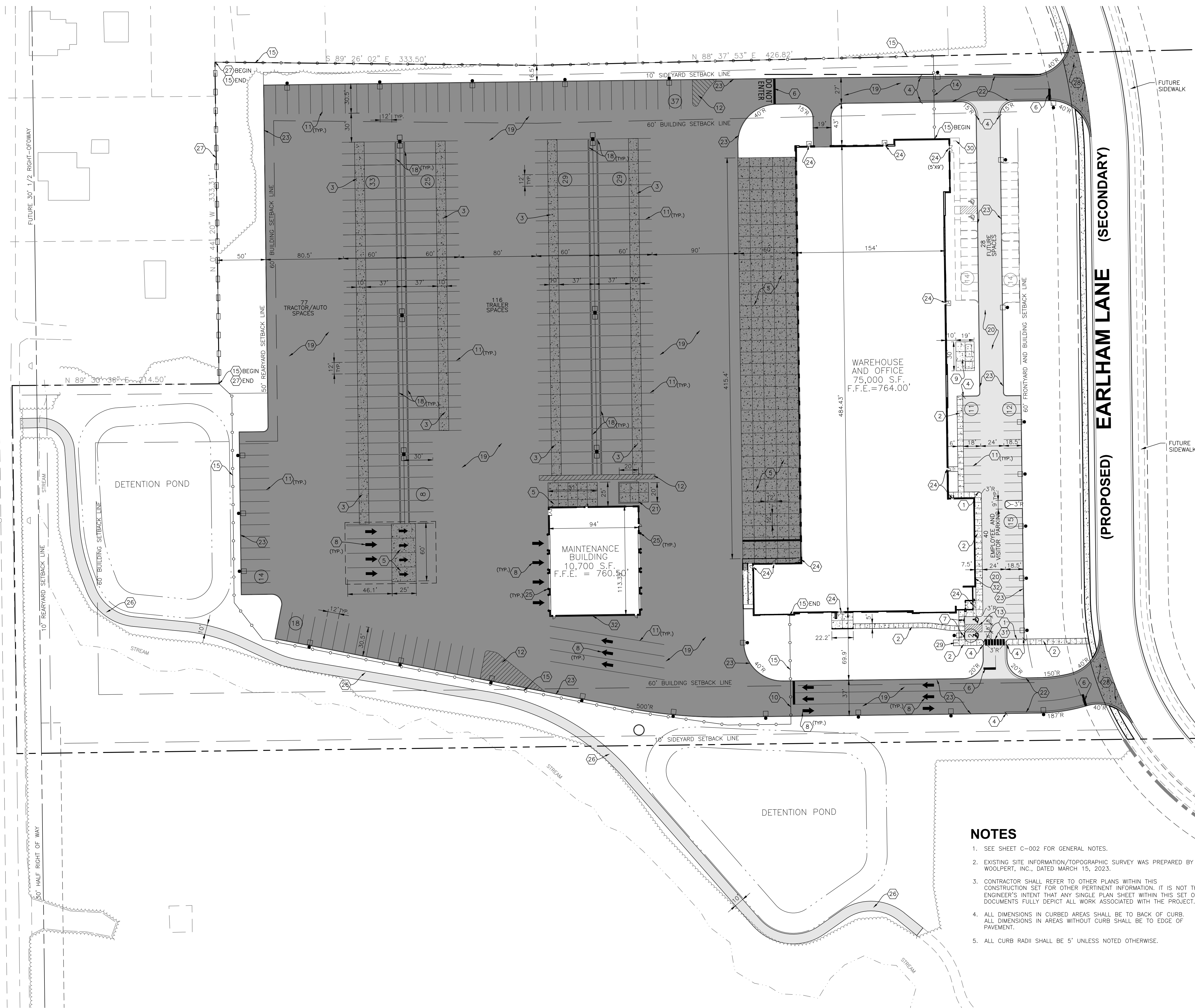


Layout Tab Name: SITE PLAN
 Last Saved By: Burchett, 10/1/2024 3:07:11 PM
 W:\Sriniv\DE\Ingy\Clients\Indiana Life Science Center\082429 Indiana Life Science Center\4.0 Disciplines\Civil\Cadd\Cad\82429-SIT.dwg Plotted By: Burchett, Trent Plotted: October 1, 2024, 3:14:49 PM



LEGEND

- ⊕ ADA PAVEMENT SYMBOL
- ⊕ FLAGPOLE
- ⊕ LIGHTPOLE
- ⊕ SIGN
- CURB TRANSITION
- DIRECTIONAL ARROW, THERMOPLASTIC WHITE
- ⊕ PARKING SPACE COUNT
- PROPERTY BOUNDARY
- RIGHT-OF-WAY
- EASEMENT
- CHAIN LINK FENCE
- WOODEN FENCE
- ⊕ GRAVEL
- ⊕ CONCRETE SIDEWALK
- ⊕ HEAVY DUTY CONCRETE
- ⊕ STANDARD DUTY ASPHALT
- ⊕ HEAVY DUTY ASPHALT

KEYNOTES (X)

1. INTEGRAL CURB AND WALK, TYPICAL; SEE SHEET C-801
2. STANDARD DUTY CONCRETE WALK, TYPICAL; SEE SHEET 3 OF PLAINFIELD TOWN STANDARDS.
3. DOLLY PAD; SEE SHEET C-801
4. CONCRETE CURB END TAPER; SEE SHEET C-801
5. HEAVY DUTY CONCRETE PAVEMENT; SEE SHEET C-801
6. 24" STOP BAR, WHITE THERMOPLASTIC ROAD MARKING PAINT
7. ADA PEDESTRIAN RAMP; SEE SHEET 4 OF PLAINFIELD TOWN STANDARDS
8. DIRECTIONAL ARROW PAVEMENT MARKINGS
9. CONCRETE TRANSFORMER PAD;
10. VEHICLE SLIDE GATE
11. 4" WHITE STRIPING, TYPICAL
12. 4" WHITE STRIPING AT 60° ANGLE, 4' O.C.
13. 4" PAINTED BLUE PAVEMENT STRIPE AT 45° ANGLE 2' O.C.
14. EMERGENCY EXIT ONLY, MANUAL SWING GATE WITH KNOX BOX (SEE ELECTRICAL PLANS);
15. 6" CHAIN LINK FENCE; SEE SHEET C-801
16. ADA SYMBOL PAVEMENT MARKING; SEE SHEET C-801
17. BOLLARD MOUNTED ADA PARKING SIGN; SEE SHEET C-801
18. HEAVY DUTY PRECAST CONCRETE WHEEL STOP; SEE SHEET C-801
19. HEAVY DUTY ASPHALT; SEE SHEET C-801
20. STANDARD DUTY ASPHALT; SEE SHEET C-801
21. DUMPSTER ENCLOSURE; SEE ARCHITECTURAL DRAWINGS.
22. CONCRETE CURB AND GUTTER; SEE SHEET 3 OF PLAINFIELD TOWN STANDARDS
23. 6" STRAIGHT CONCRETE CURB; SEE SHEET 3 OF PLAINFIELD TOWN STANDARDS
24. 5' X 5' STOOP (UNLESS OTHERWISE NOTED); SEE SHEET C-801
25. GUARD POST; SEE SHEET C-801
26. 10" ASPHALT SIDEWALK; SEE SHEET C-801
27. 6" WOODEN FENCE; SEE SHEET C-801
28. 8" CONCRETE APPROACH; SEE DETAIL DS-R01 ON SHEET 4 OF THE PLAINFIELD TOWN STANDARDS
29. PROPOSED BIKE RACK; SEE SHEET C-801
30. FUTURE BIKE RACK; SEE SHEET C-801
31. PIANO KEY CROSSWALK; SEE SHEET 6 OF PLAINFIELD TOWN STANDARDS
32. ROOF MOUNTED MECHANICAL UNITS TO BE SCREENED WITH PARAPET WALL IN ACCORDANCE WITH SECTION 4.16 OF THE PLAINFIELD ZONING ORDINANCE

NOTES

1. SEE SHEET C-002 FOR GENERAL NOTES.
2. EXISTING SITE INFORMATION/TOPOGRAPHIC SURVEY WAS PREPARED BY WOOLPERT, INC., DATED MARCH 15, 2023.
3. CONTRACTOR SHALL REFER TO OTHER PLANS WITHIN THIS CONSTRUCTION SET FOR OTHER PERTINENT INFORMATION. IT IS NOT THE ENGINEER'S INTENT THAT ANY SINGLE PLAN SHEET WITHIN THIS SET OF DOCUMENTS FULLY DEPICT ALL WORK ASSOCIATED WITH THE PROJECT.
4. ALL DIMENSIONS IN CURBED AREAS SHALL BE TO BACK OF CURB. ALL DIMENSIONS IN AREAS WITHOUT CURB SHALL BE TO EDGE OF PAVEMENT.
5. ALL CURB RADII SHALL BE 5' UNLESS NOTED OTHERWISE.

N

GRAPHIC SCALE IN FEET

ISSUANCE SCHEDULE	DESCRIPTION
NUMBER	DATE

**PACE AIR FREIGHT HQ
 INDIANA LIFE SCIENCES PARK**

PLAINFIELD, INDIANA

PROJECT NO:	82429.12
DATE ISSUED:	10/01/2024
DESIGNED BY:	TAB
DRAWN BY:	SMB
CHECKED BY:	JGM

SHEET NAME:
 SITE PLAN

SHEET NO:
C-201

WOOLPERT
 ARCHITECTURE | ENGINEERING | GEOSPATIAL
 333 North Alabama Street, Suite 200
 Indianapolis, IN 46204
 317.299.7500