

HWY. 267

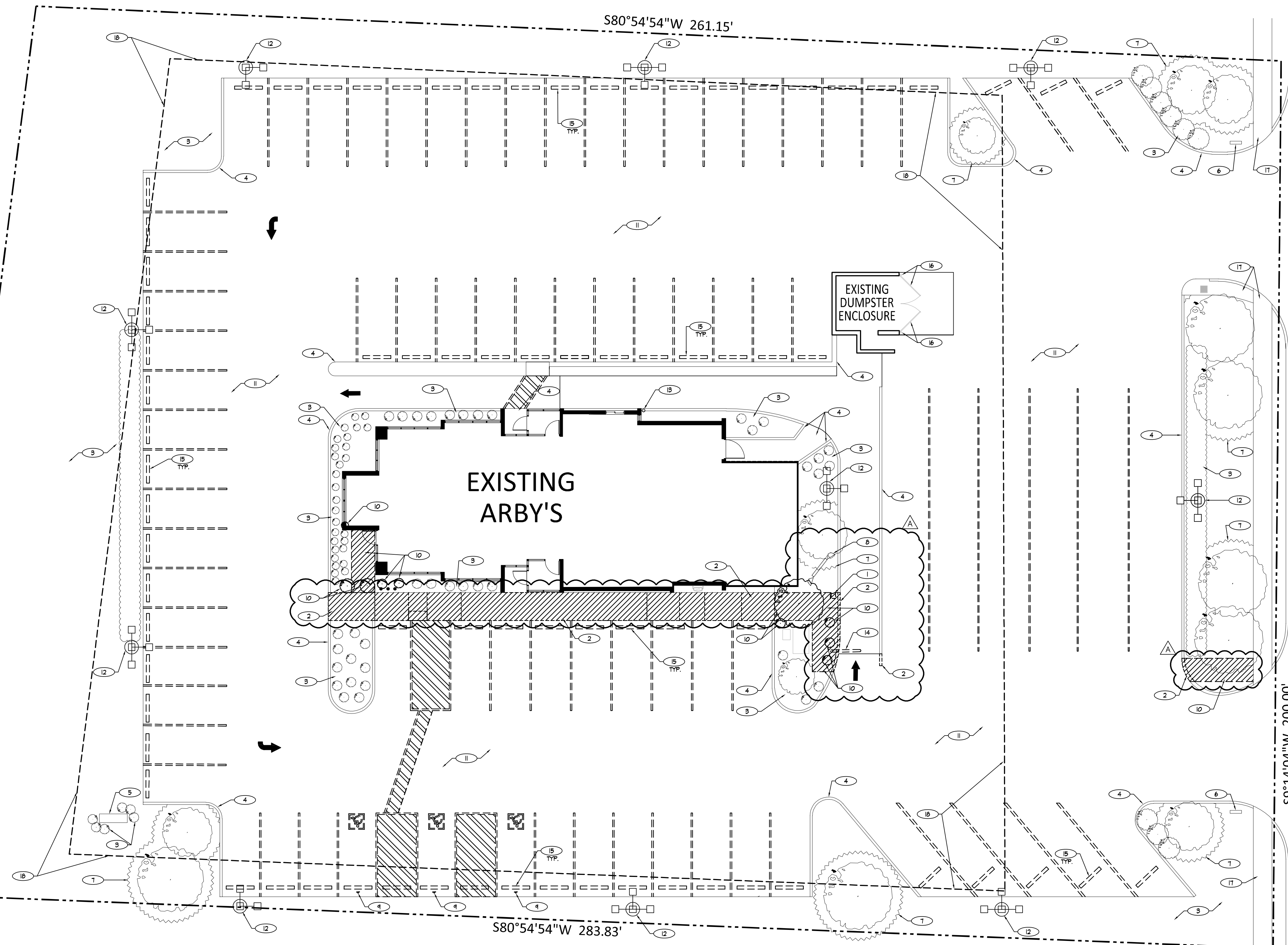
S2°46'00"W 201.28'

S80°54'54"W 261.15'

S9°14'04"W 200.00'

S80°54'54"W 283.83'

GATEWAY DRIVE



KEYED DEMO NOTES

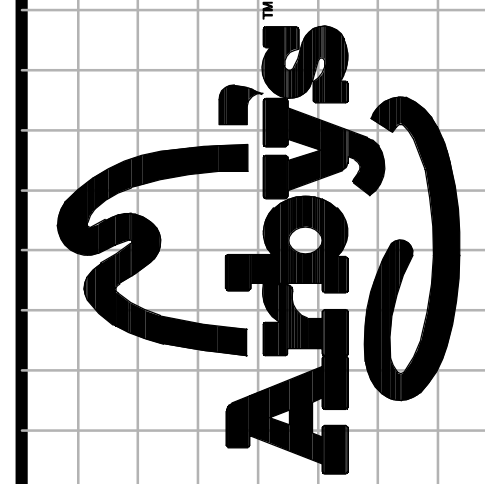
- 1 REMOVE EXISTING SPEAKER POST. COORDINATE WITH CANOPY VENDOR RE-USE OF ELECTRICAL/ CONNECTIONS.
- 2 REMOVE CONCRETE SIDEWALK/CURB TO EXTENTS SHOWN.
- 3 EXISTING LANDSCAPE AREA TO REMAIN. PROTECT SHRUBS WITH TENSION FRAMED ARBORIST MESH (LARGER PLANTS AND ESTABLISHED PERENNIAL GROUND COVER), OR WITH STAKED/SECURED LAUNDRY BASKETS (SMALLER PLANTS) DURING ALL PHASES OF CONSTRUCTION.
- 4 EXISTING CONCRETE CURB/SIDEWALK TO REMAIN.
- 5 EXISTING MONUMENT SIGN TO REMAIN. PREPARE TO REPLACE FACES AND REPAIR/PAINT CABINET TO "AS NEW" CONDITION.
- 6 EXISTING DIRECTIONAL SIGN TO REMAIN. PREPARE TO REPLACE FACES AND REPAIR/PAINT BASE TO "AS NEW" CONDITION.
- 7 G.C. TO PROVIDE TEMPORARY HIGH-VISIBILITY STAKED SAFETY FENCING, 24-36" BEYOND DRIP EDGE OF TREE.
- 8 EXISTING DRIVE THRU MENU BOARD TO BE RELOCATED. PREPARE TO REPLACE FACES ONLY AND PAINT CABINET.
- 9 REMOVE EXISTING ADA PARKING SIGNS.
- 10 REMOVE EXISTING LANDSCAPE. PREPARE AREA FOR NEW WORK.
- 11 PATCH/REPAIR, AND PREPARE FOR NEW STRIPING. EXISTING PARKING LOT (TO EXTENTS ARBY'S IS RESPONSIBLE FOR MAINTAINING).
- 12 EXISTING SITE LIGHT TO REMAIN. PREPARE BASE TO RECEIVE NEW PAINT.
- 13 EXISTING BOLLARD TO REMAIN. PREPARE TO RECEIVE NEW FINISH.
- 14 REMOVE CLEARANCE BAR.
- 15 REMOVE EXISTING WHEEL STOP. SEE C101.
- 16 REMOVE EXISTING GATES AND PREPARE TO RECEIVE NEW GATES. PREPARE VISIBLE EXTERIOR SURFACES OF DUMPSTER ENCLOSURE TO RECEIVE NEW FINISH. SEE C101.
- 17 EXISTING PUBLIC SIDEWALK TO REMAIN.
- 18 SEE EXISTING CONDITIONS SURVEY FOR SETBACK DESIGNATIONS/ PARAMETERS.

GENERAL NOTES

- A. G.C. SHALL INFORM ARCHITECT IF SITE CONDITIONS (DIMENSIONAL OR OTHERWISE) WILL NOT ALLOW FOR NEW ACCESSIBLE ROUTE(S) AS INDICATED.
- B. ALL STORM DRAINS SHALL REMAIN FUNCTIONAL THROUGHOUT ALL PHASES OF DEMOLITION AND CONSTRUCTION.
- C. COORDINATE ALL SITE CONCRETE WORK WITH ARB CONSTRUCTION MANAGER.
- D. ANY PLANTS, BUSHES, OR TREES DAMAGED BEYOND REASONABLE SURVIVAL/APPEARANCE WILL BE REPLACED BY THE G.C. AND AT THEIR EXPENSE WITH IDENTICAL PLANTS (SPECIES, SIZE) AT CLOSE OF WORK.

REGISTRATION SEAL

ARCVISION
 INCORPORATED
 ARCHITECTURE • ENGINEERING • STORE PLANNING
 SAINT LOUIS / DALLAS / LAS VEGAS / ORLANDO
 1950 ORANG ROAD, SUITE 300 ST. LOUIS, MO 63146
 PH: (314) 415-2400 FAX: (314) 415-2400
 www.arcv.com



ARBY'S INSPIRE REMODEL
 6007 GATEWAY DRIVE
 PLAINFIELD, IN 46168
 STORE # 6609

REV.	DATE	DESCRIPTION
1	11/14/19	PLANNING COMMENTS

PROJECT NO: 190440
 DRAWN BY: LEA
 CHECKED BY: JOW
 ISSUE DATE: 09/23/19

SITE PLAN - DEMOLITION



HWY. 267

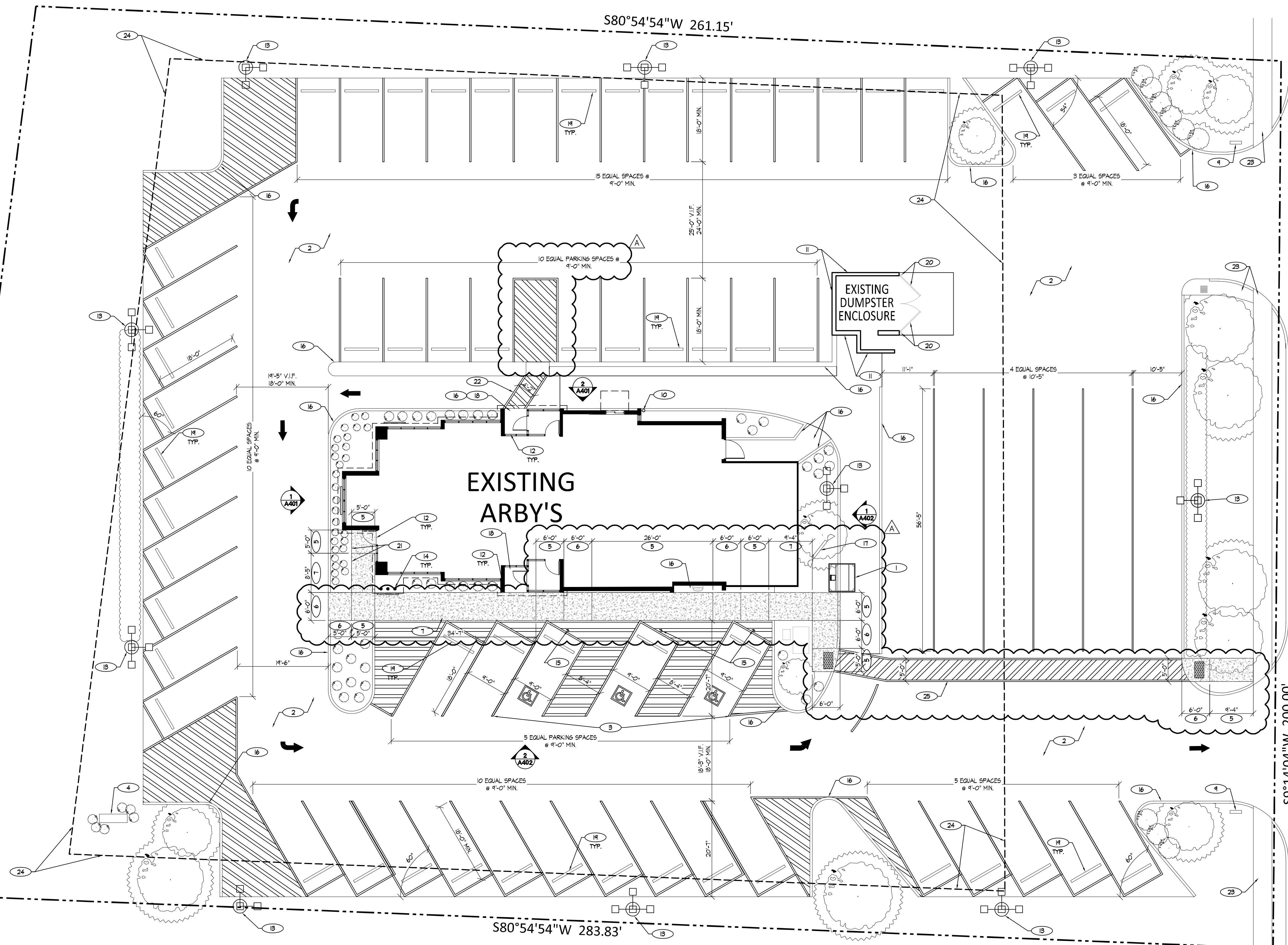
S2°46'00"W 201.28'

S80°54'54"W 261.15'

S80°54'54"W 283.83'

S9°14'04"W 200.00'

GATEWAY DRIVE



KEYED NOTES

- 1 NEW DRIVE THRU CANOPY. COORDINATE NEW CANOPY WITH VENDOR.
- 2 ENTIRE PARKING LOT TO BE CRACKFILLED, SEALED AND RE-STRIPED RESTRICTING TO MATCH PREVIOUS LAYOUT UNLESS NOTED/INDICATED OTHERWISE.
- 3 NEW ACCESS AISLE & HCP STRIPING. STRIPE PER CITY & ADA REQUIREMENTS. G.C. SHALL VERIFY MAX SLOPE OF 2% IN ALL DIRECTIONS. NOTIFY ARCHITECT IF NON-COMPLIANT. PROVIDE ALTERNATE BID TO RE-PAVE AREA WITH CONCRETE IF NECESSARY.
- 4 EXISTING MONUMENT SIGN. REPLACE FACES AND REPAIR/PAINT EXISTING CABINET TO "AS NEW" CONDITION.
- 5 NEW LEVEL LANDING WITH A 2% (1:50) MAX. SLOPE IN ALL DIRECTIONS.
- 6 NEW CONCRETE ADA ACCESSIBLE CURB RAMP W/ MAX RUNNING SLOPE OF 5% (1:20) & A MAX CROSS SLOPE OF 2% (1:50).
- 7 NEW CONCRETE SIDEWALK W/A MAX RUNNING SLOPE OF 5% (1:20) & A MAX CROSS SLOPE OF 2% (1:50).
- 8 PROVIDE FLUSH TRANSITION.
- 9 EXISTING DIRECTIONAL SIGN TO REMAIN. REPLACE FACES AND REPAIR/PAINT BASE TO "AS NEW" CONDITION.
- 10 PAINT EXISTING BOLLARD "STOP" RED.
- 11 PAINT VISIBLE SURFACES OF DUMPSTER ENCLOSURE AND WALK-IN UNIT "ROCKWOOD BROWN". SEE A401 FOR SPEC.
- 12 SILICONE BUILDING JOINTS AT ALL BUILDING AND SIDEWALK INTERSECTIONS.
- 13 PAINT CONCRETE LIGHT BASE "ROCKWOOD BROWN". SEE A401 FOR SPEC.
- 14 NEW PRE-MANUFACTURED 6" POSTS BY SIGN VENDOR.
- 15 NEW ACCESSIBLE PARKING SIGNAGE PER CITY & ADA REQUIREMENTS.
- 16 EXISTING SIDEWALK/CURB TO REMAIN. POWER WASH SIDEWALKS AS NEEDED. REPAINT "NO PARKING" AREA CURBING WITH DOT YELLOW PAINT AS REQUIRED.
- 17 EXISTING DRIVE THRU MENU BOARD RELOCATED. REPLACE FACES ONLY AND PAINT CABINET.
- 18 G.C. SHALL VERIFY LEVEL LANDING AT ENTRY. MAX 2% SLOPE ALL DIRECTIONS.
- 19 NEW WHEEL STOP
- 20 INSTALL NEW COMPOSITE GATES (NATURE'S COMPOSITES, SIMTEK OR SIMILAR) TO FIT EXISTING OPENING. MATERIAL TO BE WOOD-GRAINED AND MATCH "ROCKWOOD BROWN". IF COLOR CANNOT BE EXACTLY MATCHED, CONSULT WITH ARBY'S FOR AN ACCEPTABLE ALTERNATIVE. RETROFIT OR EXCHANGE EXISTING HARDWARE TO ACCEPT NEW GATES.
- 21 ALIGN
- 22 NEW CROSSWALK. VERIFY MAX RUNNING SLOPE OF 5% CROSS SLOPE OF 2%.
- 23 EXISTING PUBLIC SIDEWALK TO REMAIN.
- 24 SEE EXISTING CONDITIONS SURVEY FOR SETBACK DESIGNATIONS/PARAMETERS.
- 25 NEW CROSSWALK - VERIFY MAX RUNNING SLOPE OF 5% CROSS SLOPE OF 2%.

GENERAL NOTES

- A. G.C. SHALL INFORM ARCHITECT IF SITE CONDITIONS (DIMENSIONAL OR OTHERWISE) WILL NOT ALLOW FOR NEW ACCESSIBLE ROUTES AS INDICATED.
- B. ALL STORM DRAINS SHALL REMAIN FUNCTIONAL THROUGHOUT ALL PHASES OF DEMOLITION AND CONSTRUCTION.
- C. COORDINATE ALL SITE CONCRETE WORK WITH ARS CONSTRUCTION MANAGER.
- D. ANY PLANTS, BUSHES, OR TREES DAMAGED BEYOND REASONABLE SURVIVAL/APPEARANCE WILL BE REPLACED BY THE G.C. AND AT THEIR EXPENSE WITH IDENTICAL PLANTS (SPECIES, SIZE) AT CLOSE OF WORK.

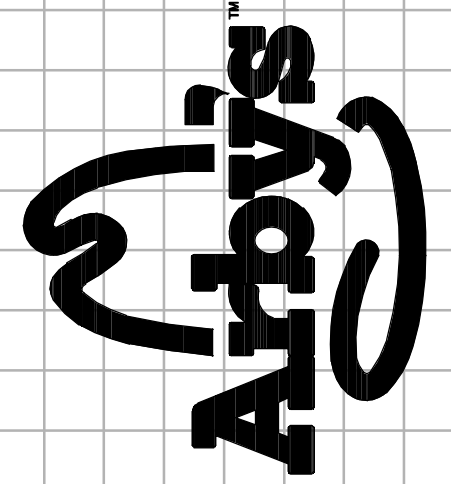
1 PROPOSED SITE PLAN
 SCALE: 1" = 12'-0"



PLANNING-DEVELOPMENT REVIEW

REGISTRATION SEAL

ARCVISION
 INCORPORATED
 ARCHITECTURE • ENGINEERING • STORE PLANNING
 SAINT LOUIS / DALLAS / LAS VEGAS / ORLANDO
 1950 ORANG ROAD, SUITE 300 ST. LOUIS, MO 63146
 PH: (314) 415-2400 FAX: (314) 415-2300
 www.arcv.com



ARBY'S INSPIRE REMODEL
 6007 GATEWAY DRIVE
 PLAINFIELD, IN 46168
 STORE # 6609

REV.	DATE	DESCRIPTION
1	11/14/19	ISSUE FOR PERMITS

PROJECT NO: 190440
 DRAWN BY: LEA
 CHECKED BY: JOW
 ISSUE DATE: 09/23/19

SITE PLAN - PROPOSED
C101