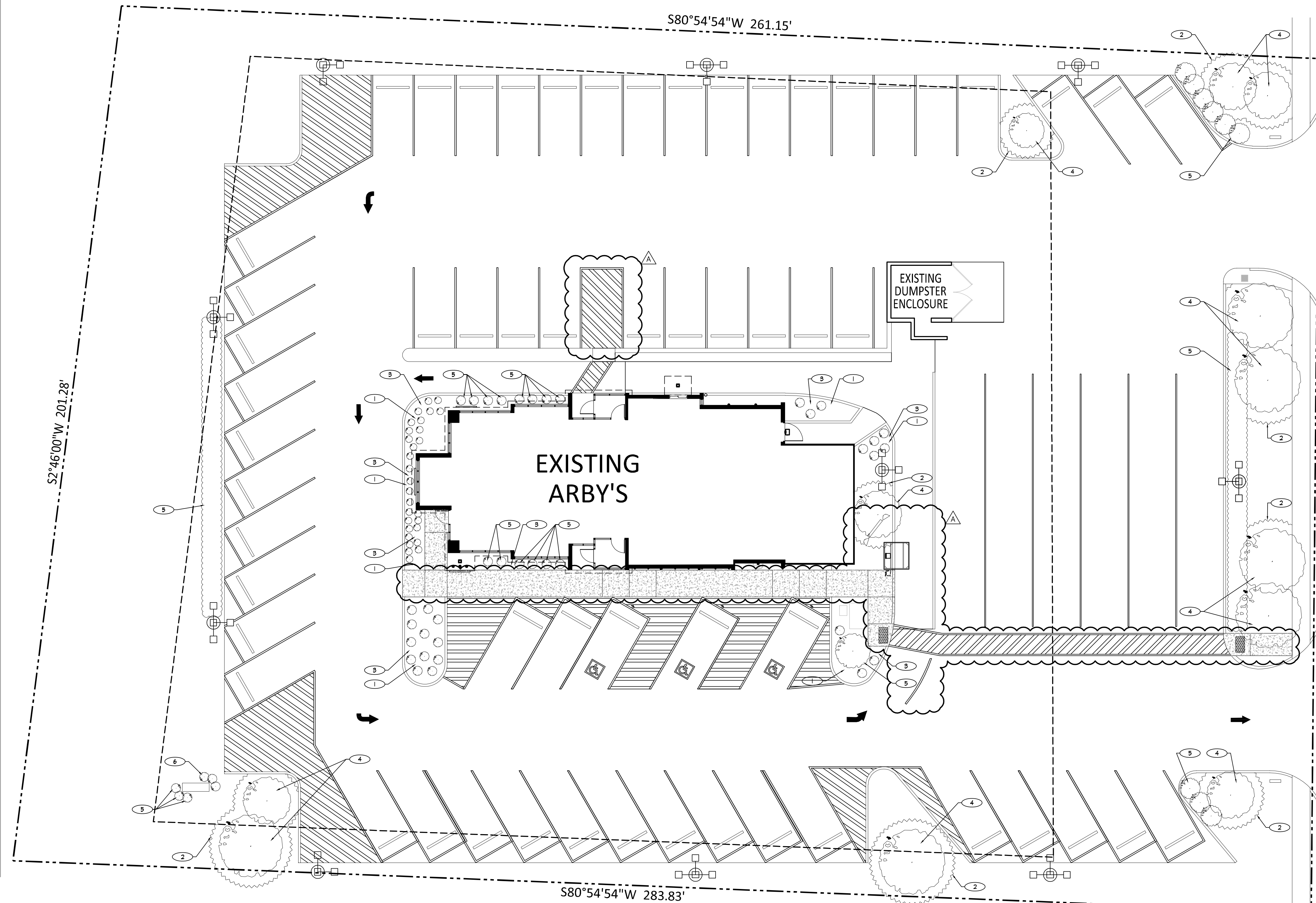


HWY. 267

S2°46'00"W 201.28'

S80°54'54"W 261.15'



GATEWAY DRIVE

KEYED NOTES

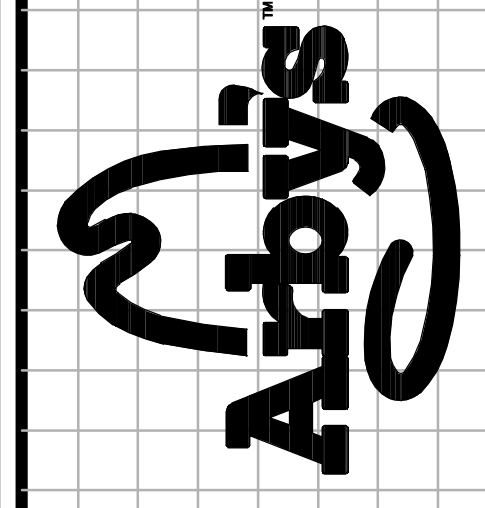
- 1 EXISTING LANDSCAPE AREA TO REMAIN. PROTECT SHRUBS WITH TENSION FRAMED ARBORIST MESH (LARGER PLANTS AND ESTABLISHED PERENNIAL GROUND COVER), OR WITH STAKED/SECURED LAUNDRY BASKETS (SMALLER PLANTS) DURING ALL PHASES OF CONSTRUCTION.
- 2 G.C. TO PROVIDE TEMPORARY HIGH-VISIBILITY STAKED SAFETY FENCING, 24-36" BEYOND DRIF EDGE OF TREE.
- 3 CHUNK "REDWOOD" RED HARDWOOD MULCH, APPLY AT END OF CONSTRUCTION PHASE.
- 4 EXISTING DECIDUOUS TREE TO REMAIN.
- 5 EXISTING EVERGREEN SHRUBS TO REMAIN.
- 6 EXISTING EVERGREEN GROUNDCOVER TO REMAIN.

GENERAL NOTES

- A. ANY PLANTS, BUSHES OR TREES DAMAGED BEYOND REASONABLE SURVIVAL/APPEARANCE WILL BE REPLACED BY THE G.C. AND AT THEIR EXPENSE WITH IDENTICAL PLANTS (SPECIES, SIZE) AT CLOSE OF WORK.
- B. ALL AREAS OF GRASS SHALL BE REPAIRED OF DAMAGE AND OVER-SEEDED WITH SEED OF SAME VARIETY AS EXISTING GRASS.

REGISTRATION SEAL

ARCVISION
 INCORPORATED
 ARCHITECTURE • ENGINEERING • STORE PLANNING
 SAINT LOUIS / DALLAS / LAS VEGAS / ORLANDO
 1950 CRRIG ROAD, SUITE 300 ST. LOUIS, MO 63146
 PH: (314) 415-2400 FAX (314) 415-2300
 www.arcv.com



ARBY'S INSPIRE REMODEL
 6007 GATEWAY DRIVE
 PLAINFIELD, IN 46168
 STORE # 6609

REV.	DATE	DESCRIPTION
1	11/14/19	PLANNING COMMENTS

PROJECT NO: 190440
 DRAWN BY: LEA
 CHECKED BY: JOW
 ISSUE DATE: 09/23/19

SITE PLAN - LANDSCAPE

