

**Exhibit "G"**

Utility Plan

**VANDALIA TRAIL APARTMENTS**  
 PLAINFIELD, IN

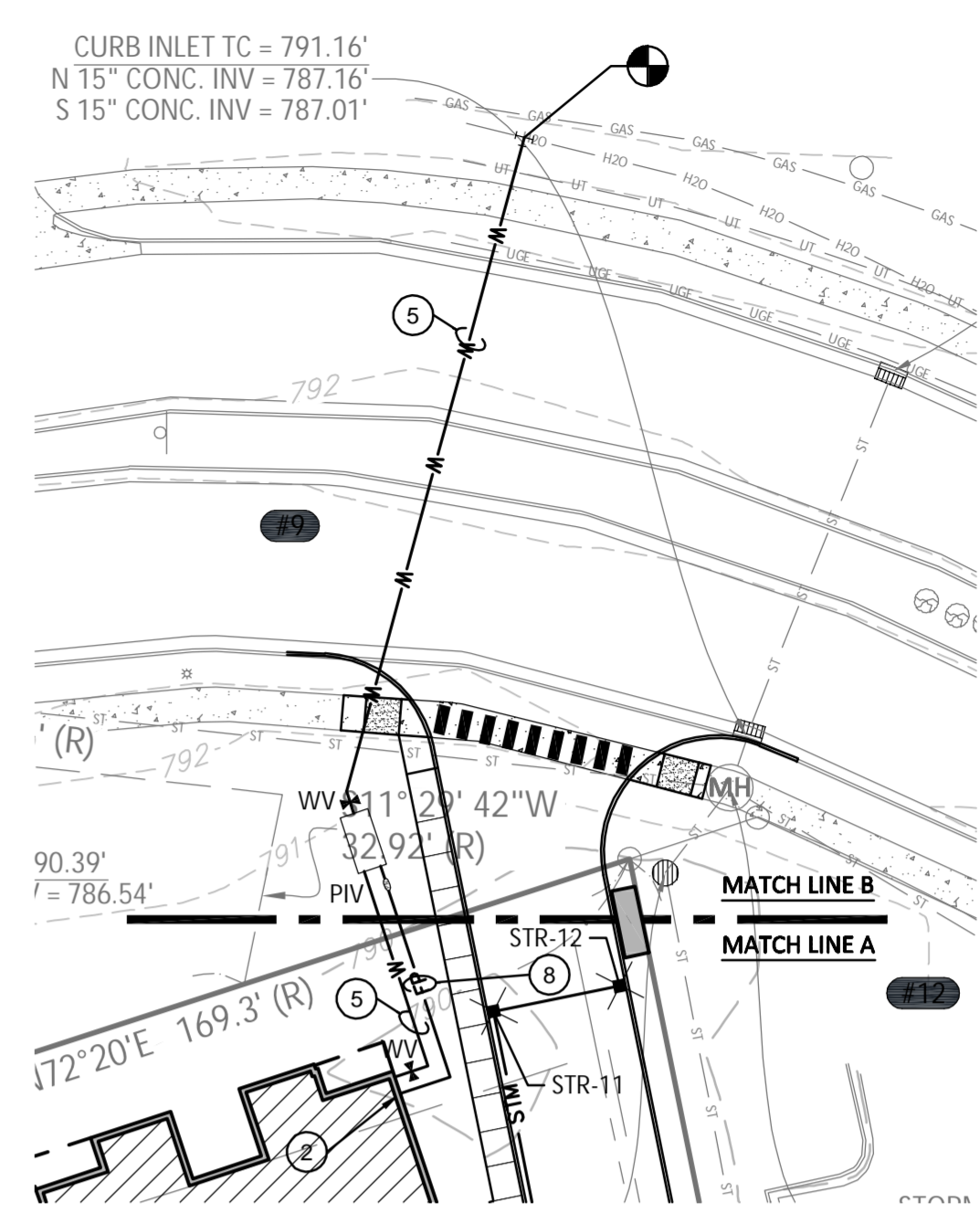
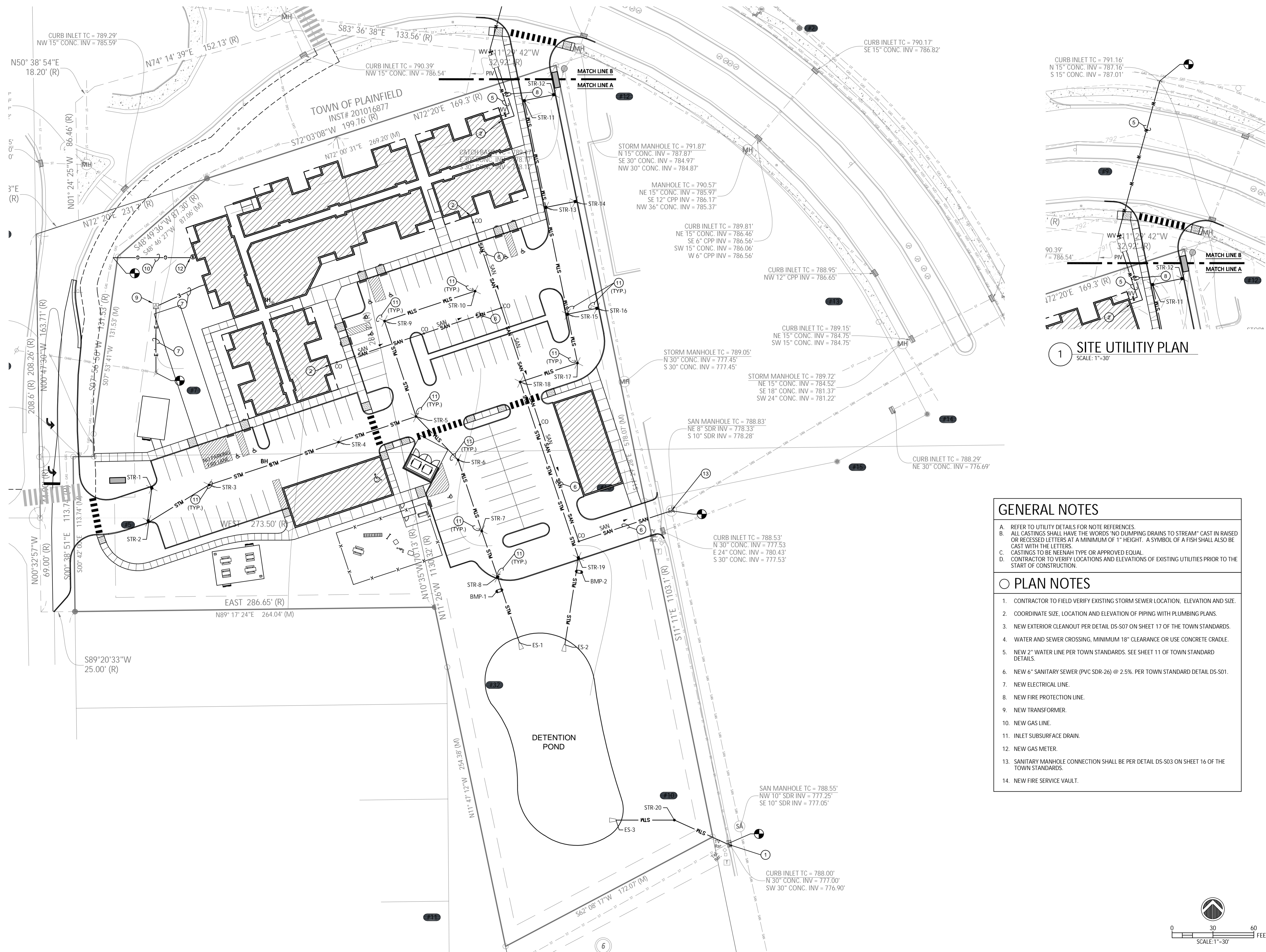
**TAC DEVELOPMENT PLAN**

NUMBER	DATE	DESCRIPTION

**SITE UTILITY PLAN**

SCALE: 1" = 30'  
 DATE: AUG 15, 2019  
 PROJECT #: 19JPC25  
 DRAWN: CLM  
 COORD: ADS  
 APPROVED: ADS

**C400**



**1 SITE UTILITY PLAN**  
 SCALE: 1"=30'

**GENERAL NOTES**

- A. REFER TO UTILITY DETAILS FOR NOTE REFERENCES.
- B. ALL CASTINGS SHALL HAVE THE WORDS "NO DUMPING DRAINS TO STREAM" CAST IN RAISED OR RECESSED LETTERS AT A MINIMUM OF 1" HEIGHT. A SYMBOL OF A FISH SHALL ALSO BE CAST WITH THE LETTERS.
- C. CASTINGS TO BE MENEAH TYPE OR APPROVED EQUAL.
- D. CONTRACTOR TO VERIFY LOCATIONS AND ELEVATIONS OF EXISTING UTILITIES PRIOR TO THE START OF CONSTRUCTION.

**PLAN NOTES**

- 1. CONTRACTOR TO FIELD VERIFY EXISTING STORM SEWER LOCATION, ELEVATION AND SIZE.
- 2. COORDINATE SIZE, LOCATION AND ELEVATION OF PIPING WITH PLUMBING PLANS.
- 3. NEW EXTERIOR CLEANOUT PER DETAIL DS-S07 ON SHEET 17 OF THE TOWN STANDARDS.
- 4. WATER AND SEWER CROSSING, MINIMUM 18" CLEARANCE OR USE CONCRETE CRADLE.
- 5. NEW 2" WATER LINE PER TOWN STANDARDS. SEE SHEET 11 OF TOWN STANDARD DETAILS.
- 6. NEW 6" SANITARY SEWER (PVC SDR-26) @ 2.5%. PER TOWN STANDARD DETAIL DS-S01.
- 7. NEW ELECTRICAL LINE.
- 8. NEW FIRE PROTECTION LINE.
- 9. NEW TRANSFORMER.
- 10. NEW GAS LINE.
- 11. INLET SUBSURFACE DRAIN.
- 12. NEW GAS METER.
- 13. SANITARY MANHOLE CONNECTION SHALL BE PER DETAIL DS-S03 ON SHEET 16 OF THE TOWN STANDARDS.
- 14. NEW FIRE SERVICE VAULT.

