

Kohls EFC-5 - Renovation – Project Narrative
9998 Allpoints Parkway
July 19, 2019

Owner: Kohls Department Stores, Inc.
PO Box 2148
Milwaukee, WI 53201

Petitioner: American Structurepoint
7260 Shadeland Station
Indianapolis, IN 46256

Architect Lamar Johnson Collaborative
2199 Innerbelt Business Center Drive
St. Louis, MO 63114

Engineer: American Structurepoint
7260 Shadeland Station
Indianapolis, IN 46256

Landscape Lamar Johnson Collaborative
2199 Innerbelt Business Center Drive
St. Louis, MO 63114

Project Overview

Kohl’s Department Stores, Inc. is proposing to construct a new building addition at their existing distribution center (Kohl’s EFC-5) located at 9998 Allpoints Parkway. The building expansion will be located near the southeast corner of the building, be single story, occupy a footprint of approximately 3,300 square feet and contain a breakroom for employees. The proposed expansion will also include an approximately 1,000 square foot outdoor patio space that will be screened from the public via a fence and landscaping. The expansion will have ground mounted mechanical equipment that will be located immediately north of the expansion and patio space. Not only will the mechanical equipment be screened using an opaque fence, but it has been strategically located in a nook that is out of the view of the public.

Zoning Assessment

The property is currently zoned I2 and will not need to be rezoned for the proposed use. Bradford Road and Allpoints Parkway are classified as a Collector Streets, requiring a 60-foot building/front yard setback. Required side and rear yard setbacks are 10 feet. The proposed site plan will be compliant with all required setbacks as approved and will not require any variance or incentives.

Site Access

Site access will remain unchanged from current operations

Parking

The existing parking provided on site exceeds minimum code requirements for industrial buildings (1 space/3,000 sft), with approximately 950 spaces provided. No additional parking is proposed as the addition is intended to provide benefits for current employees.

Landscaping

The proposed site will be landscaped in accordance with the Town of Plainfield Zoning Ordinance, including foundation plantings.

Drainage

The site was master planned for future expansion as Allpoints Midwest Building #6. The location for the proposed building addition was master planned as a much larger surface parking lot. The overall runoff from the expansion will remain less than what the master plan was designed to accommodate. Detention and water quality have been provided for the full buildout of the site in a detention ponds located on the west side of the existing building. Runoff from the site will drain via overland and shallow concentrated flow to a series of existing drainage structures around the building. Runoff will then be conveyed to the detention ponds on the west side of the property.

Site Utilities

Water: Water service will be extended from within the existing facility and no new water taps are planned.

Sewer: Sanitary service will extend from within the existing facility and no new sewer taps are planned.

Electric: Electric service will extend from within the existing facility and no new electric connections are planned

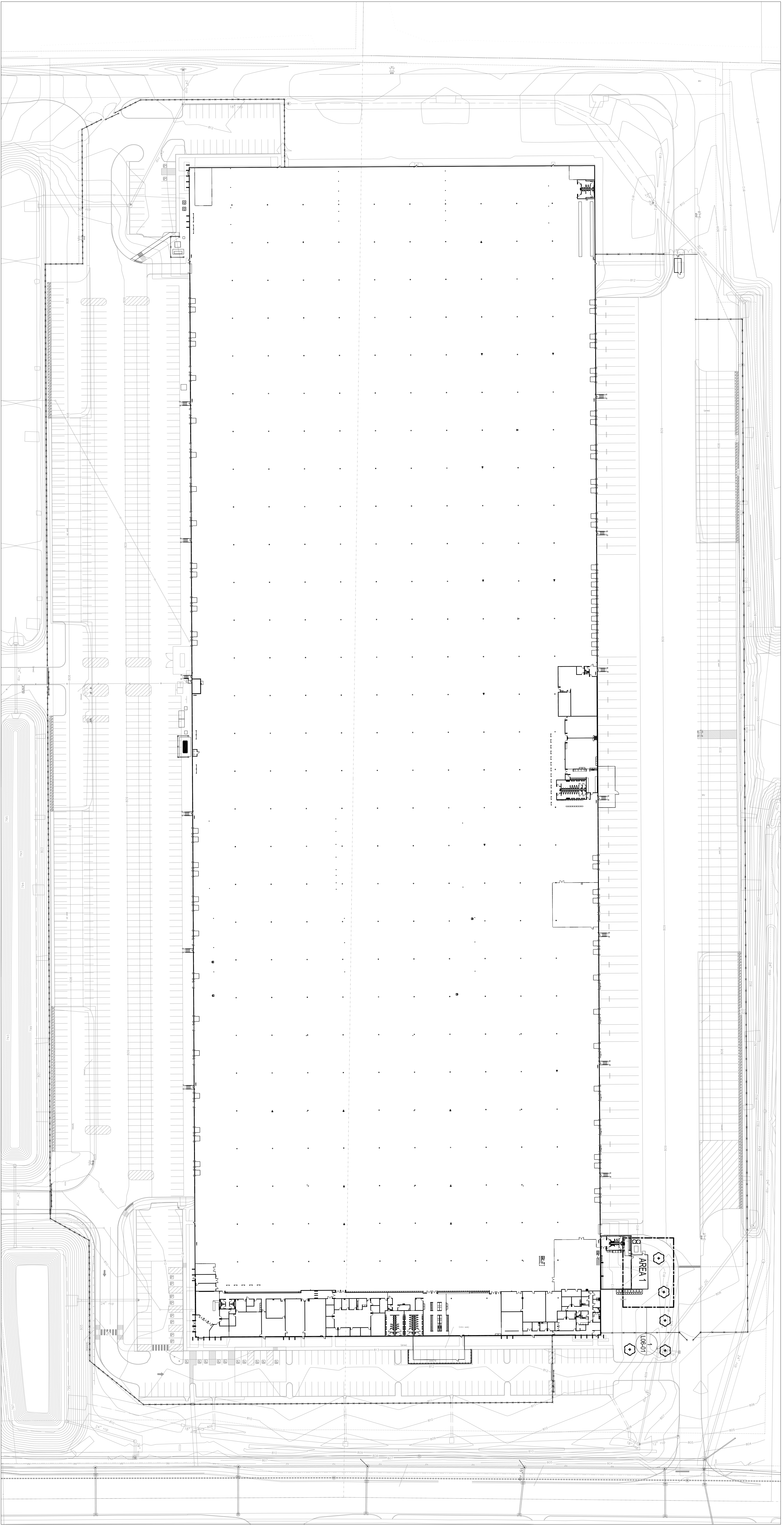
Gas: Gas service will extend from within the existing facility and no new gas service taps are planned.

Kohls EFC-5-Renovation



Proposed project





CLAYCO

THE ART & SCIENCE OF BUILDING

2199 INNERBELT BUSINESS CENTER DRIVE
ST. LOUIS, MISSOURI 63114
Ph 314.429.5100 Fx 314.429.3137

ARCHITECT
FORUM

2700 HANDEL BLVD., SUITE 200, ST. LOUIS, MO 63103
PH: 314.429.4000 FAX: 314.429.4001

- CIVIL ENGINEER
- STRUCTURAL ENGINEER
- ALPER ADRI, INC.
- MECHANICAL ENGINEER
- NATIONAL DESIGN BUILD SERVICES
- ELECTRICAL ENGINEER
- ENVIRONMENTAL ELECTRIC
- PLUMBING ENGINEER
- A. HUBER & SONS, INC.
- FIRE PROTECTION ENGINEER
- DALUATION FIRE, INC.

KOHL'S EFC-5 - RENOVATION

ALLPOINTS MIDWEST BUILDING 6
9998 ALLPOINTS PARKWAY
PLAINFIELD, INDIANA 46168

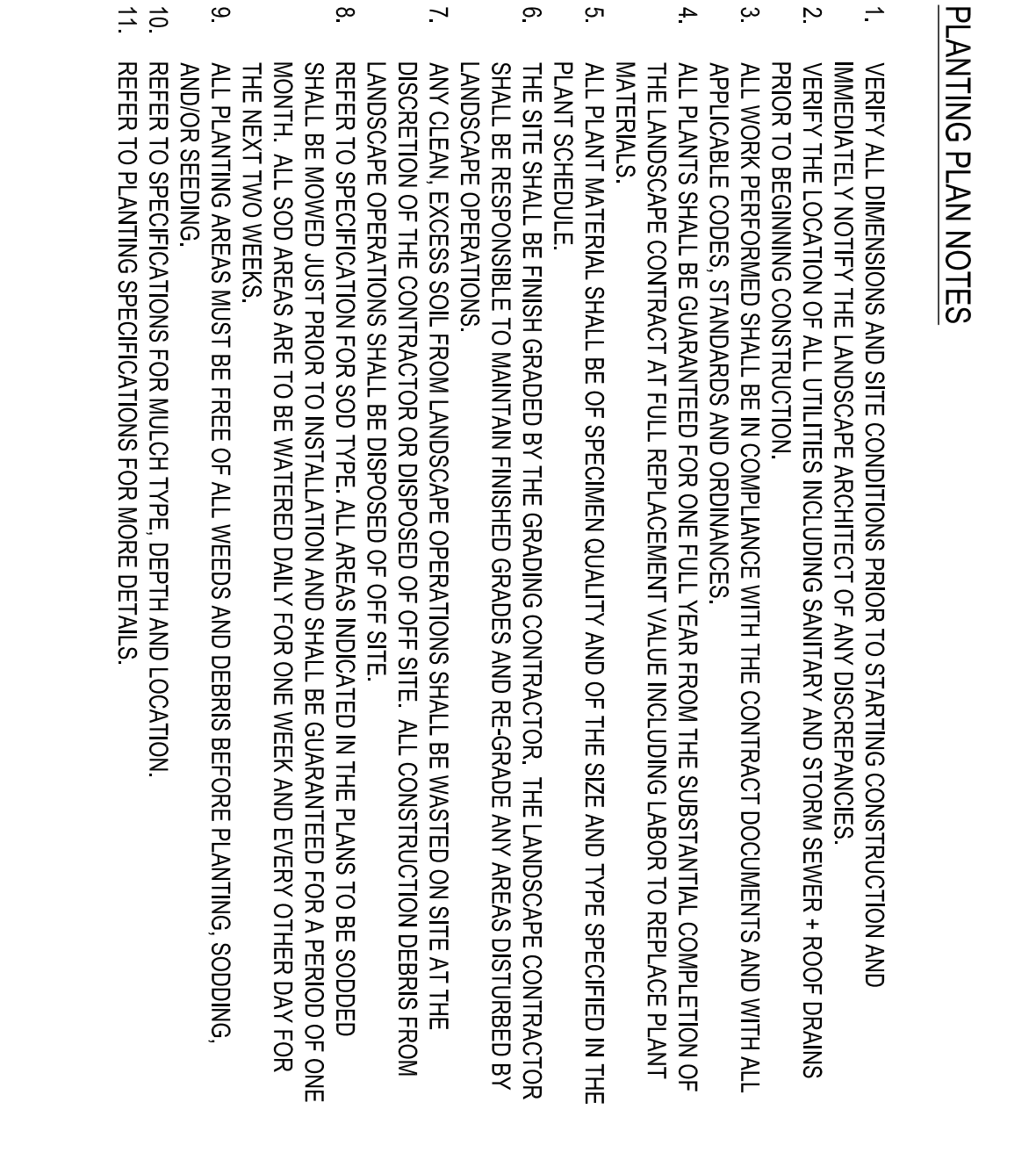
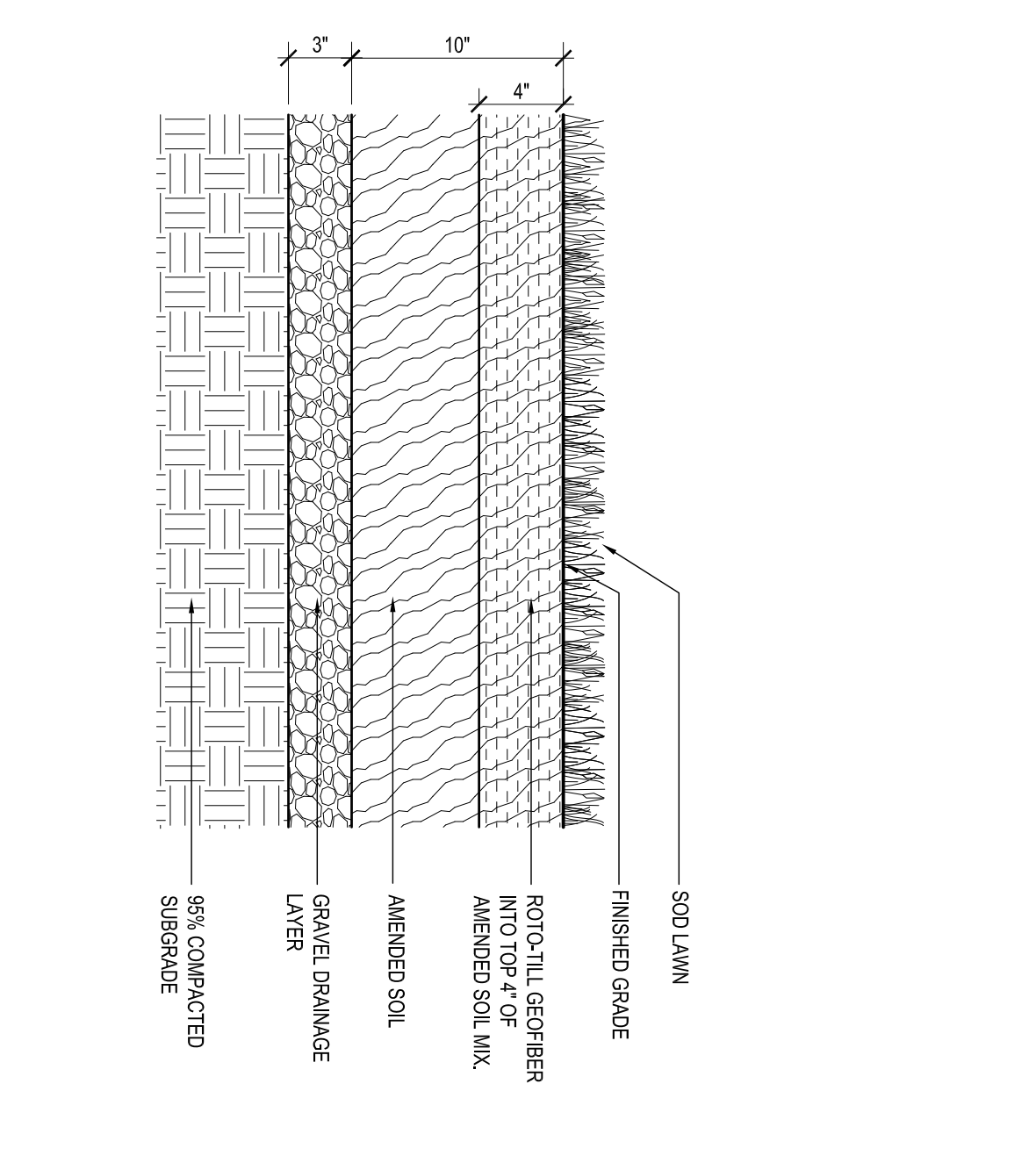
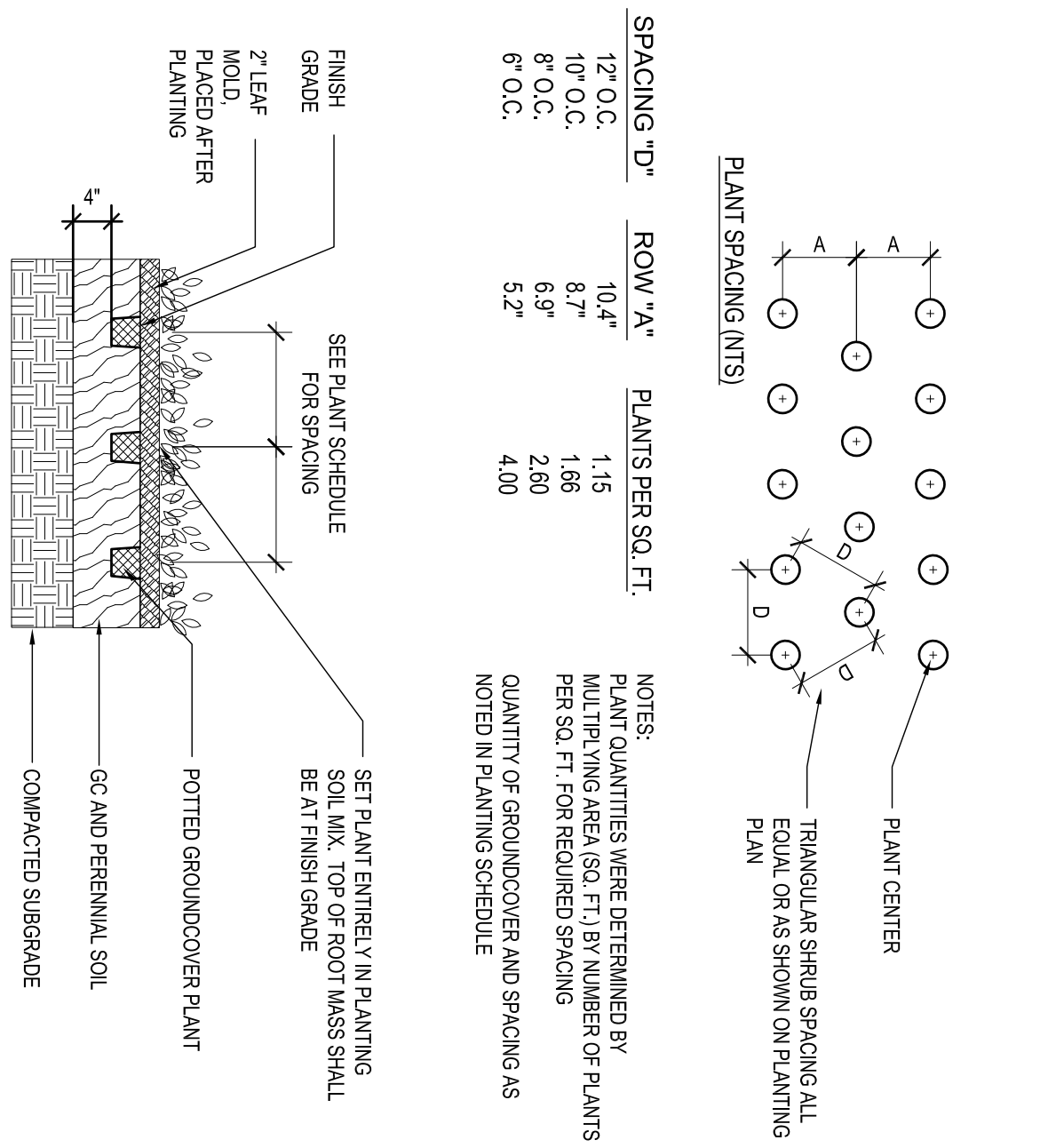
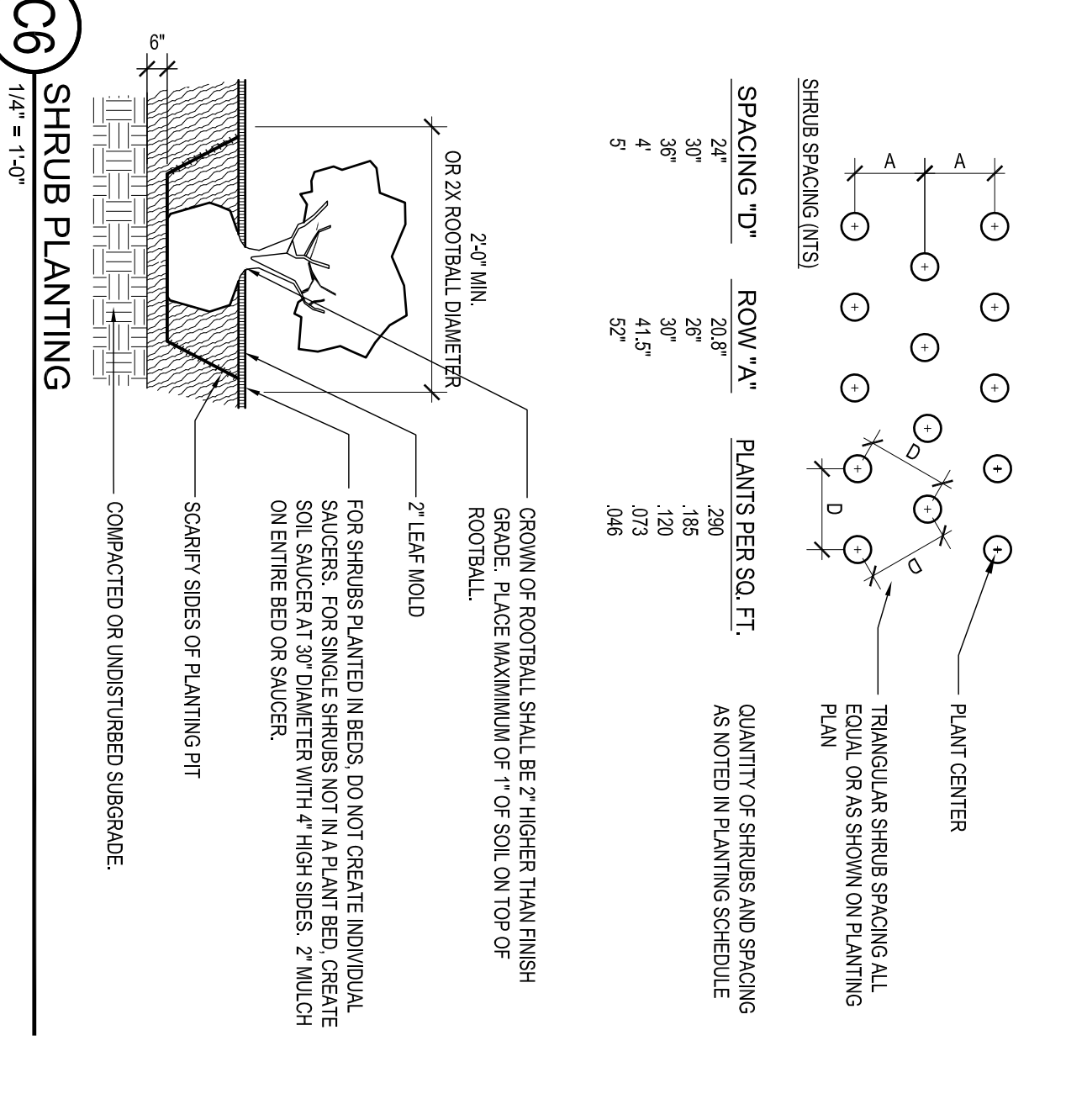
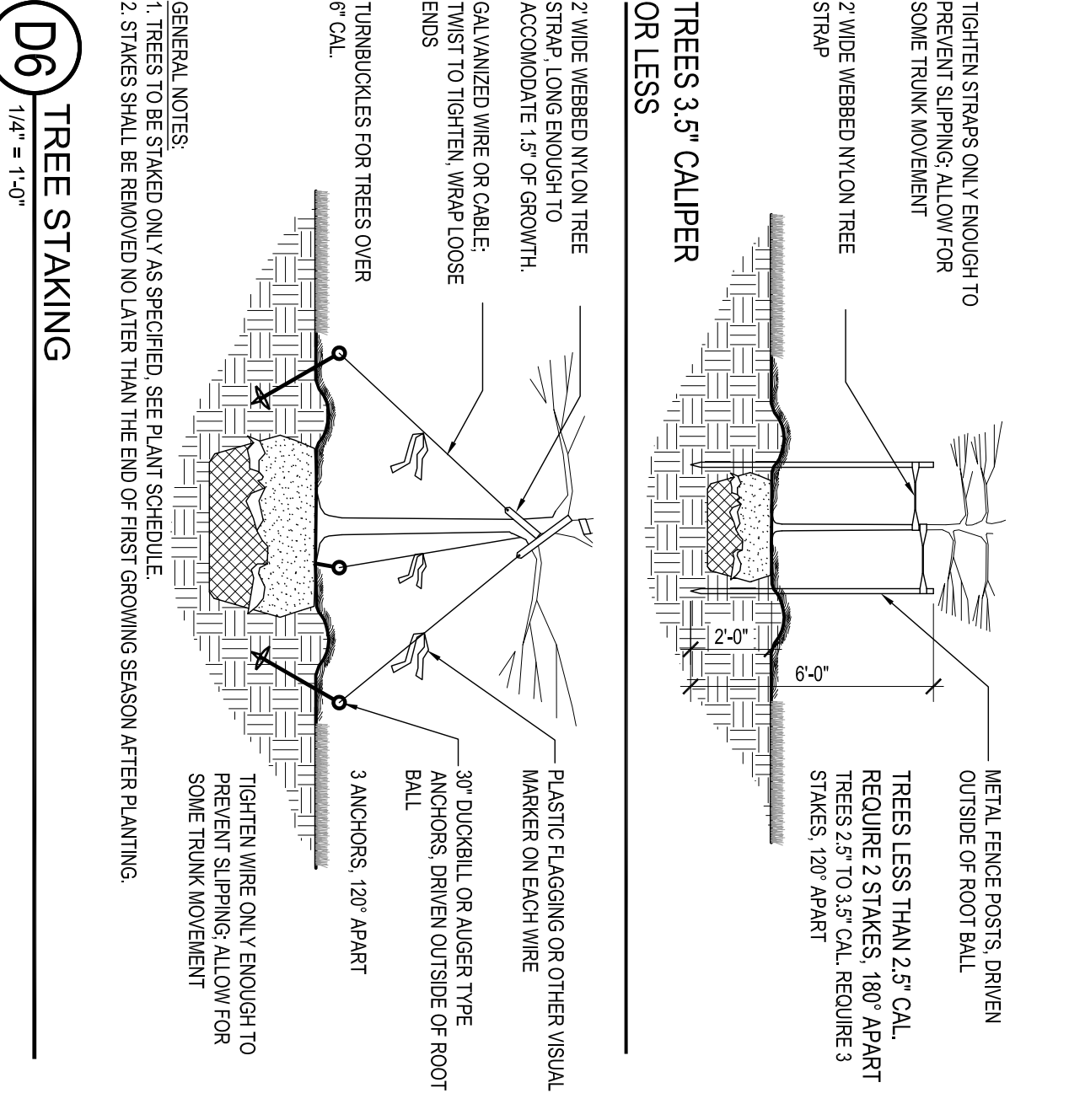
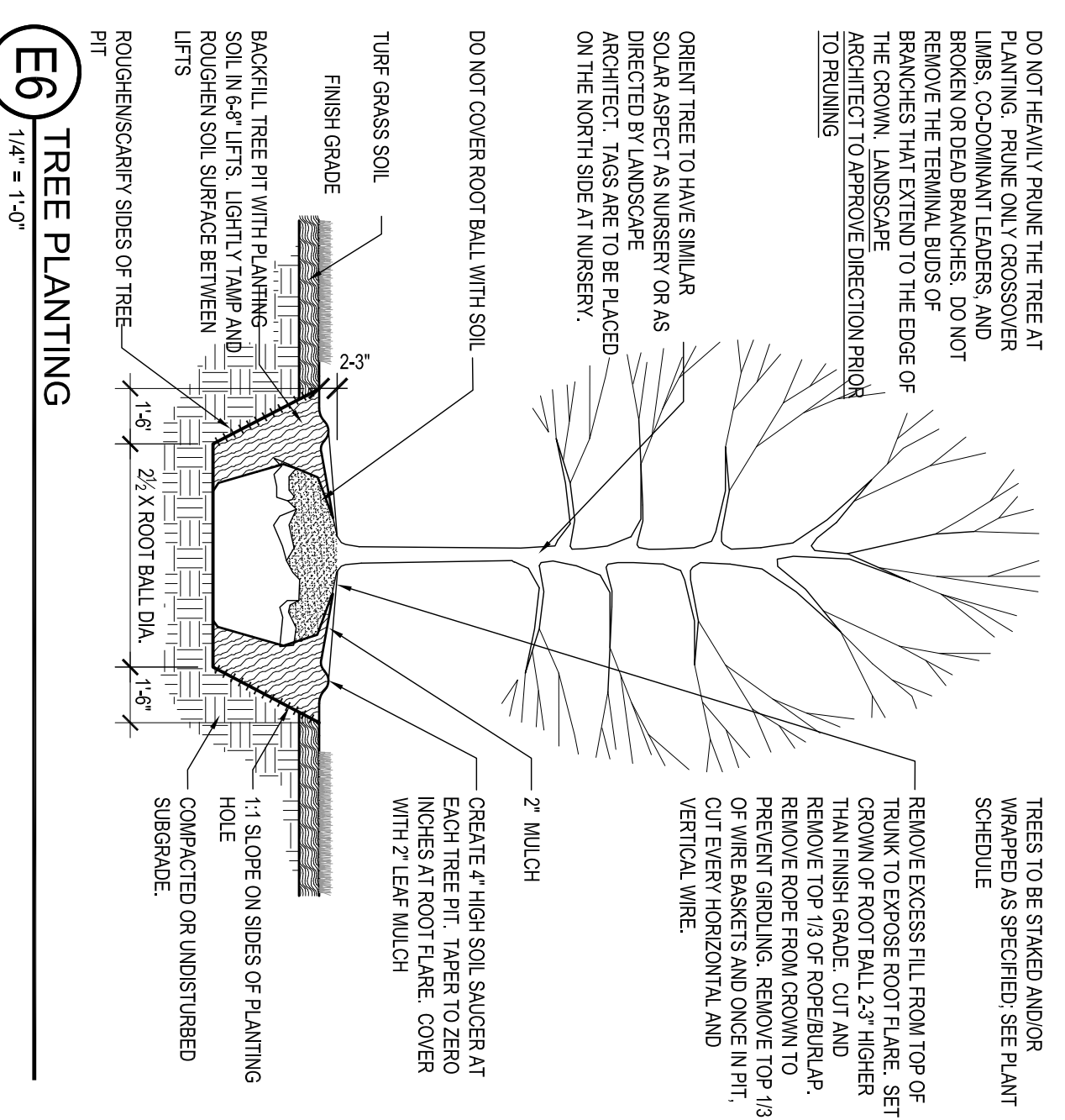
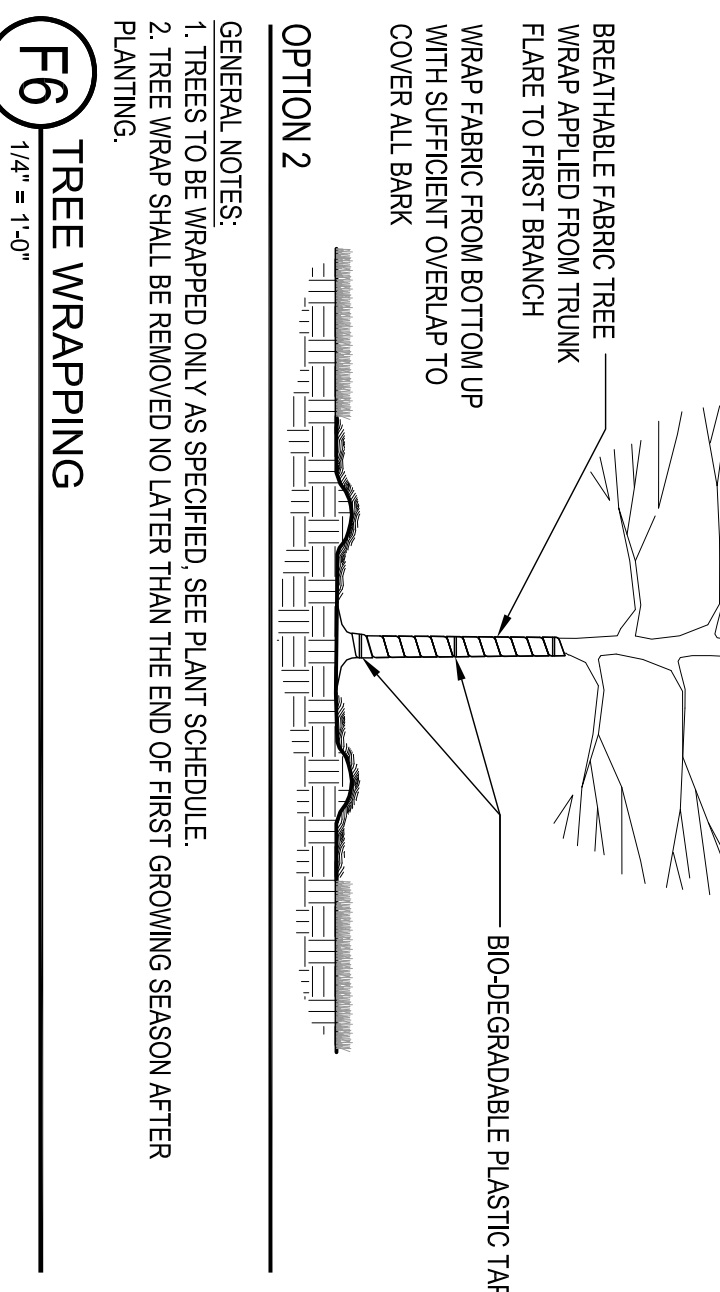
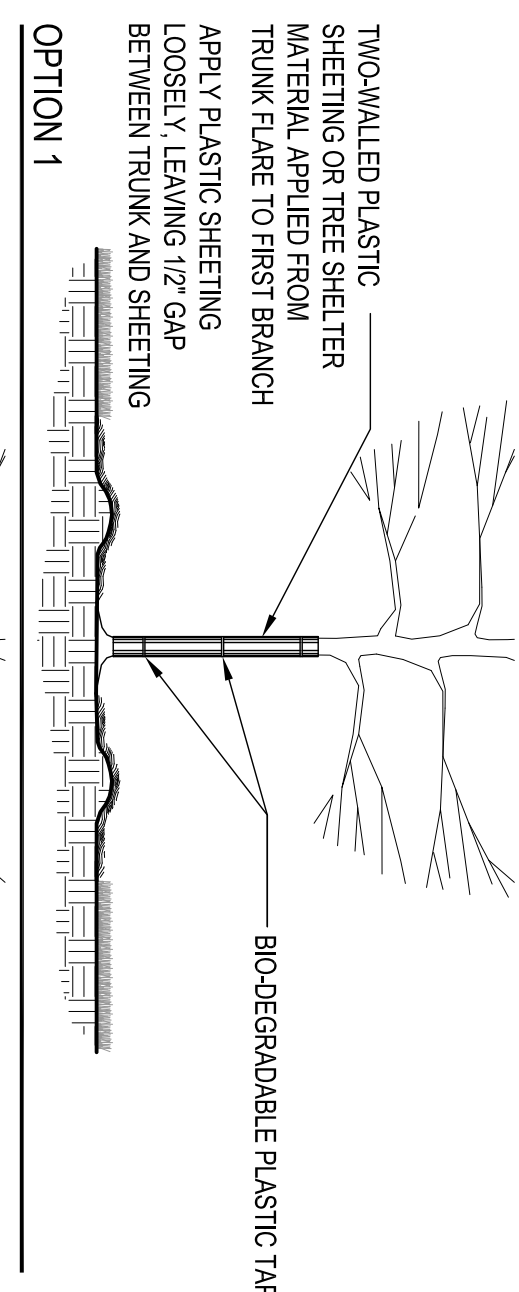
DESCRIPTION	DATE
DESIGN DEVELOPMENT	06.03.2019
PERMIT DRAWINGS	06.06.2019
DEVELOPMENT PLAN	07.19.2019
REVIEW	

DRAWING TITLE
L06-00

DRAWING NO. 09-03292
LANDSCAPE REFERENCE PLAN
Forum # _____
Consult # _____



LANDSCAPE REFERENCE PLAN
L06-00 1" = 20'-0"



F5 GROUND COVER PLANTING
1/4" = 1'-0"

E5 REINFORCED LAWN
1/4" = 1'-0"

PLANT SCHEDULE - FOUNDATION PLANTING

DECIDUOUS TREES			
SYM	QTY	BOTANICAL NAME	CULTIVAR
AC RU	2	Acer rubrum	Frank Jr.
DECIDUOUS SHRUBS			
SYM	QTY	BOTANICAL NAME	CULTIVAR
th ar	12	Rhus aromatica	Gr-Low
vi ac	13	Viburnum acerifolium	Mapleleaf Viburnum
EVERGREEN SHRUBS			
SYM	QTY	BOTANICAL NAME	CULTIVAR
th sn	2	Thuja occidentalis	Smargad
GROUND COVER			
SYM	QTY	BOTANICAL NAME	CULTIVAR
on	30	Calamagrostis nepeta subsp. Nepeta	Calamini

NOTE:
FOUNDATION PLANTING NUMBERS:

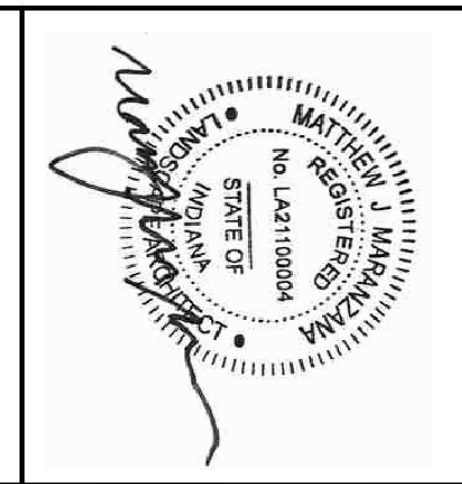
- 160.5 LINEAR FEET OF EXTERIOR BUILDING WALLS
- 321 SQUARE FEET REQUIRED OF FOUNDATION PLANTING BED
- 1.5 PLANT UNIT VALUE

The contractor is responsible for verifying all quantities and providing the correct quantity of each plant type per the drawings. Should there be a discrepancy between quantities on the plant schedule and the quantities shown on the drawings, the drawings take precedence.

PLANTING PLAN NOTES

- VERIFY ALL DIMENSIONS AND SITE CONDITIONS PRIOR TO STARTING CONSTRUCTION AND IMMEDIATELY NOTIFY THE LANDSCAPE ARCHITECT OF ANY DISCREPANCIES.
- VERIFY THE LOCATION OF ALL UTILITIES INCLUDING SANITARY AND STORM SEWER + HOOP FRAMS PRIOR TO CONSTRUCTION.
- ALL WORK PERFORMED SHALL BE IN COMPLIANCE WITH THE CONTRACT DOCUMENTS AND WITH ALL APPLICABLE CODES, STANDARDS AND ORDINANCES.
- ALL PLANTS SHALL BE GUARANTEED FOR ONE FULL YEAR FROM THE SUBSTANTIAL COMPLETION OF THE LANDSCAPE CONTRACT AT FULL REPLACEMENT VALUE INCLUDING LABOR TO REPLACE PLANT.
- ALL PLANT MATERIAL SHALL BE OF SPECIMEN QUALITY AND OF THE SIZE AND TYPE SPECIFIED IN THE PLANT SCHEDULE.
- THE SITE SHALL BE FINISH GRADED BY THE GRADING CONTRACTOR. THE LANDSCAPE CONTRACTOR SHALL BE RESPONSIBLE TO MAINTAIN FINISHED GRADES AND REGRADE ANY AREAS DISTURBED BY LANDSCAPE OPERATIONS FROM LANDSCAPE OPERATIONS SHALL BE WASTED ON SITE AT THE DISCRETION OF THE CONTRACTOR OR DISPOSED OF OFF SITE.
- LANDSCAPE OPERATIONS SHALL BE WASTED ON SITE AT THE DISCRETION OF THE CONTRACTOR OR DISPOSED OF OFF SITE.
- REFER TO SPECIFICATION FOR SOD TYPE. ALL AREAS INDICATED IN THE PLANS TO BE SODDED SHALL BE MOVED JUS PRIOR TO INSTALLATION AND SHALL BE GUARANTEED FOR A PERIOD OF ONE YEAR. THE NEXT TWO WEEKS PRIOR TO BE MAINTAINED DAILY FOR ONE WEEK AND EVERY OTHER DAY FOR ALL PLANTING AREAS MUST BE FREE OF ALL WEEDS AND DEBRIS BEFORE PLANTING, SOODING, AND/OR SEEDING.
- ALL PLANTING AREAS MUST BE FREE OF ALL WEEDS AND DEBRIS BEFORE PLANTING, SOODING, AND/OR SEEDING.
- REFER TO SPECIFICATIONS FOR MULCH TYPE, DEPTH AND LOCATION.
- REFER TO PLANTING SPECIFICATIONS FOR MORE DETAILS.

C6 SHRUB PLANTING
1/4" = 1'-0"



CLAYCO
THE ART & SCIENCE OF BUILDING
2199 INNERBELT BUSINESS CENTER DRIVE
ST. LOUIS, MISSOURI 63114
Ph.314.429.5100 Fx.314.429.3137

ARCHITECT
FORUM
2700 NATIONAL CENTER DRIVE
ST. LOUIS, MISSOURI 63103
PH. 314.429.1000 FAX. 314.429.1001

CIVIL ENGINEER
ALPER ALDI, INC.

STRUCTURAL ENGINEER
ALPER ALDI, INC.

MECHANICAL ENGINEER
NATIONAL DESIGN BUILD SERVICES

ELECTRICAL ENGINEER
GAYLOR ELECTRIC

PLUMBING ENGINEER
A. HUBER & SONS, INC.

FIRE PROTECTION ENGINEER
DALVATION FIRE, INC.

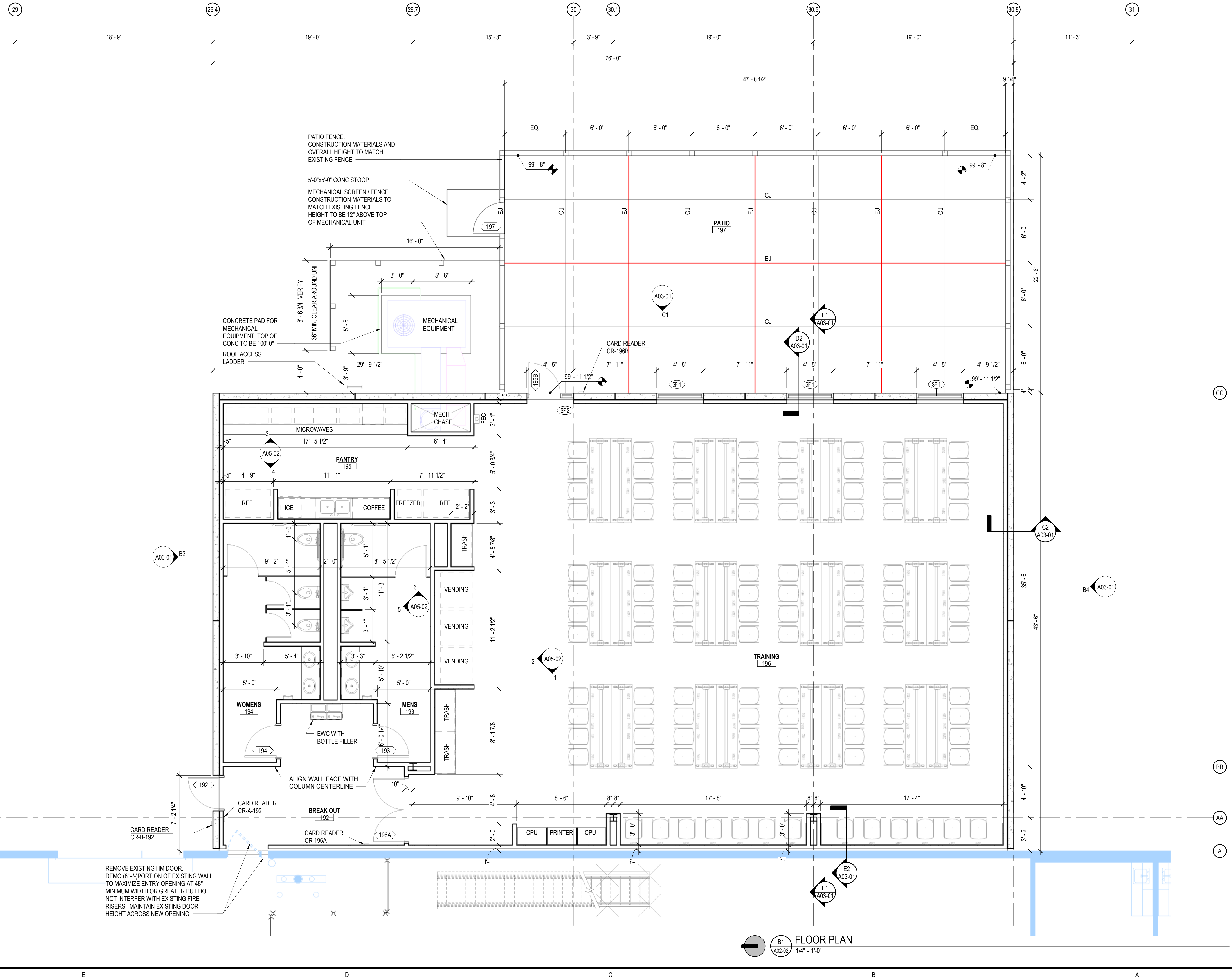
KOHL'S EFC-5 - RENOVATION
ALLPOINTS MIDWEST BUILDING 6
9998 ALLPOINTS PARKWAY
PLAINFIELD, INDIANA 46168

DESCRIPTION	DATE
PERMIT DRAWINGS	06/03/2019
PERMIT DRAWINGS	06/06/2019
FOUNDATION PLAN	07/15/2019
REVIEW	

DRAWING TITLE
L06-10

DRAWINGS NO. 07-00252
PLANTING DETAILS

Form # Control #



CLAYCO
 THE ART & SCIENCE OF BUILDING
 2199 INHERBET BUSINESS CENTER DRIVE
 ST. LOUIS, MISSOURI 63114
 PH: 314.429.5100 FX: 314.429.3137

ARCHITECT
FORUM
 2199 INHERBET BUSINESS CENTER DRIVE
 ST. LOUIS, MISSOURI 63114
 PH: 314.429.5100 FX: 314.429.3137
 CIVIL ENGINEER
 AMERICAN STRUCTUREPOINT, INC.
 STRUCTURAL ENGINEER
 ALPER AUDI, INC.
 MECHANICAL ENGINEER
 NATIONAL DESIGN BUILD SERVICES
 ELECTRICAL ENGINEER
 GAYLOR ELECTRIC
 PLUMBING ENGINEER
 A A HUBER & SONS, INC.
 FIRE PROTECTION ENGINEER
 DALMATIAN FIRE, INC.

KOHL'S EFC-5 - RENOVATION
 ALLPOINTS MIDWEST BUILDING 6
 9998 ALLPOINTS PARKWAY
 PLAINFIELD, INDIANA 46168

DRAWING ISSUE	
DESCRIPTION	DATE
DEVELOPMENT PLAN REVIEW	07.19.2019
PLANNING COMMISSION REVIEW	09.05.2019

DRAWING TITLE
ANNEX FLOOR PLAN
 DRAWING NO.
A02-02
 Forum # 601-03252 Consult #

	Total Area (A)	Area Excluding Windows, Doors, Roofing & Soffit (B)	Area of Exterior Building Materials or Colors Uses (C)	Percentage of Area of Each Qualifying Exterior Material (C / B)
North Facade	Square feet 741	Square Feet 717	Primary Material / Color - Sq. Ft.	97 %
			Secondary Material / Color - Sq. Ft.	3 %
			Other Material(s) / Color(s) - Sq. Ft.	%
East Facade	Square feet 1,061	Square Feet 955	Primary Material / Color - Sq. Ft.	90 %
			Secondary Material / Color - Sq. Ft.	10 %
			Other Material(s) / Color(s) - Sq. Ft.	%
South Façade	Square feet 688	Square Feet 688	Primary Material / Color - Sq. Ft.	100 %
			Secondary Material / Color - Sq. Ft.	%
			Other Material(s) / Color(s) - Sq. Ft.	%
West Facade	Square feet N/A	Square Feet N/A	Primary Material / Color - Sq. Ft.	%
			Secondary Material / Color - Sq. Ft.	%
			Other Material(s) / Color(s) - Sq. Ft.	%

Patio screen wall and mechanical screen wall not included in calculations above are noted below:

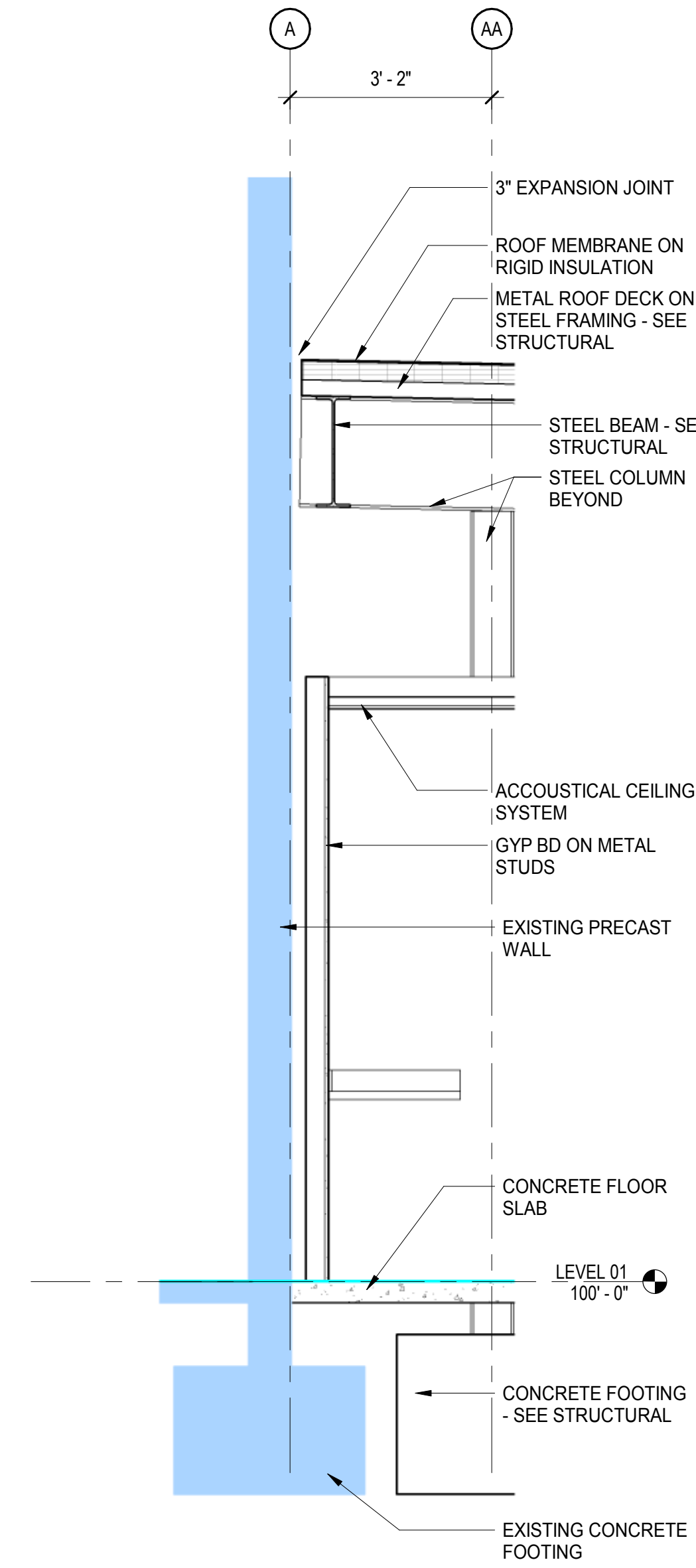
North Facade also contains 136 square feet of patio screen wall.

East Facade also contains 291 square feet of patio screen wall.

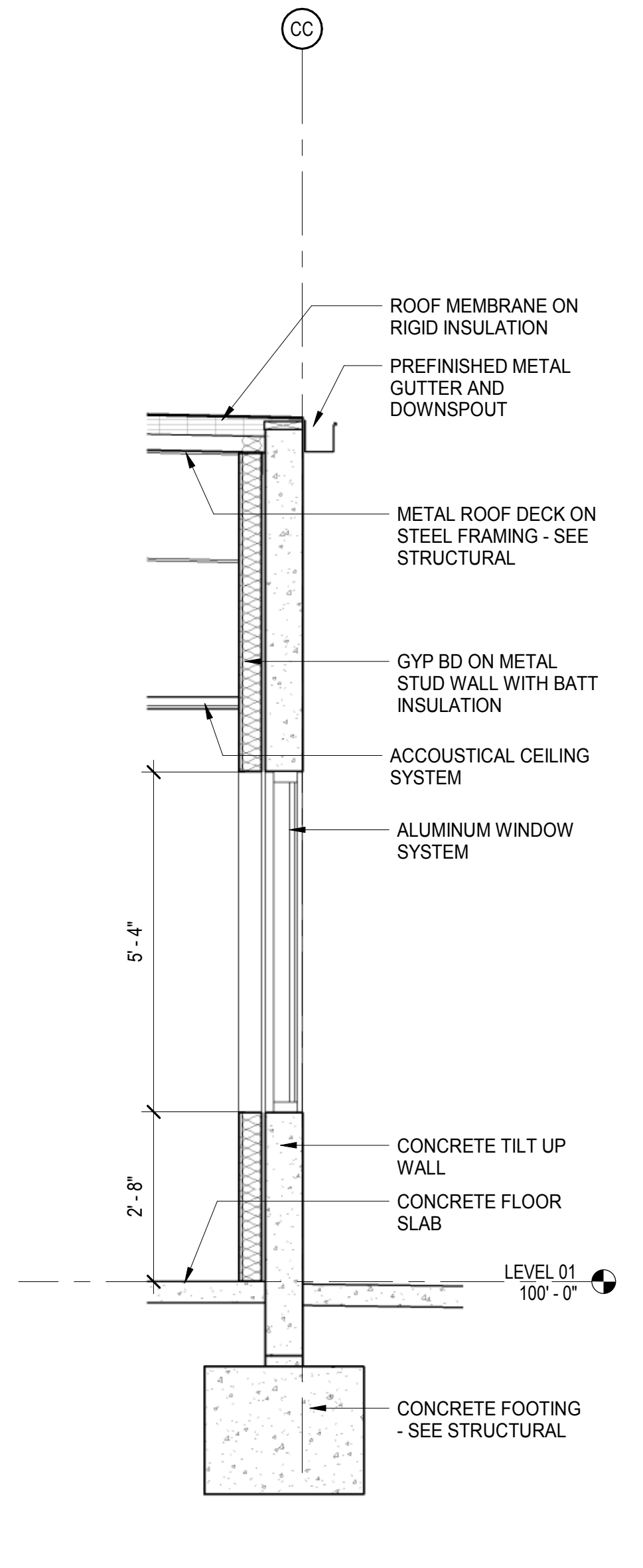
South Facade also contains 136 square feet of patio screen wall.

Mechanical screen wall contains 107 square feet of wall that matches the patio screen wall.

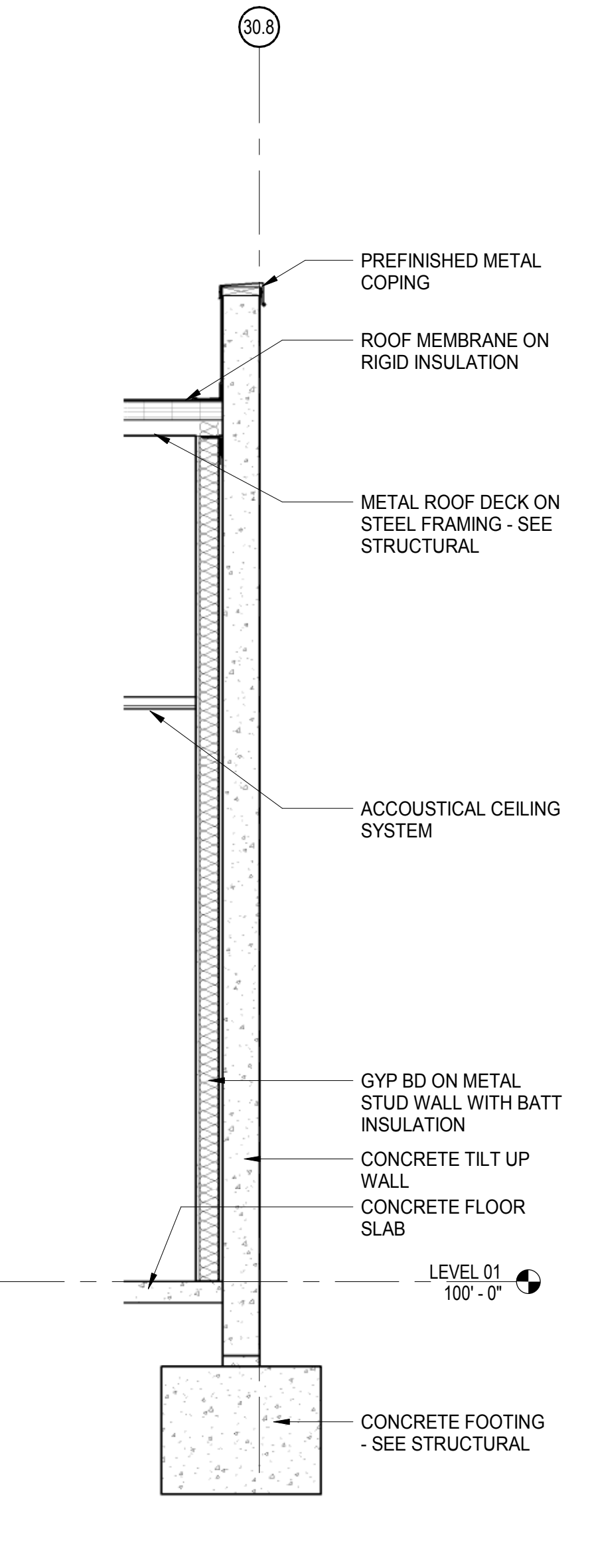
- GENERAL NOTES:
- PAINT ON ALL ANNEX ELEVATIONS TO MATCH THE MEDIUM GRAY PAINT COLOR ON THE EXISTING BUILDING PRECAST WALLS.
 - SINGLE PLY ROOF MEMBRANE TO BE WHITE.
 - REFINISHED METAL COPING, GUTTER AND DOWNSPOUTS TO BE MEDIUM GRAY TO MATCH WALL COLOR.
 - ALUMINUM WINDOW AND DOOR FRAMES TO BE CLEAR ANNOZED ALUMINUM WITH CENTER SET GLASS TO MATCH EXISTING.
 - 1" INSULATED GLASS TO MATCH EXISTING:
1/4" GUARDIAN SUNGUARD SUPERNEUTRAL 68 ON CLEAR LOW-E #2
 - PATIO FENCE AND MECHANICAL SCREEN WALL TO MATCH EXISTING PATIO WALL DIMENSIONS, MATERIAL AND COLOR. VINYL COATED GRAY WOODGRAIN FINISH.



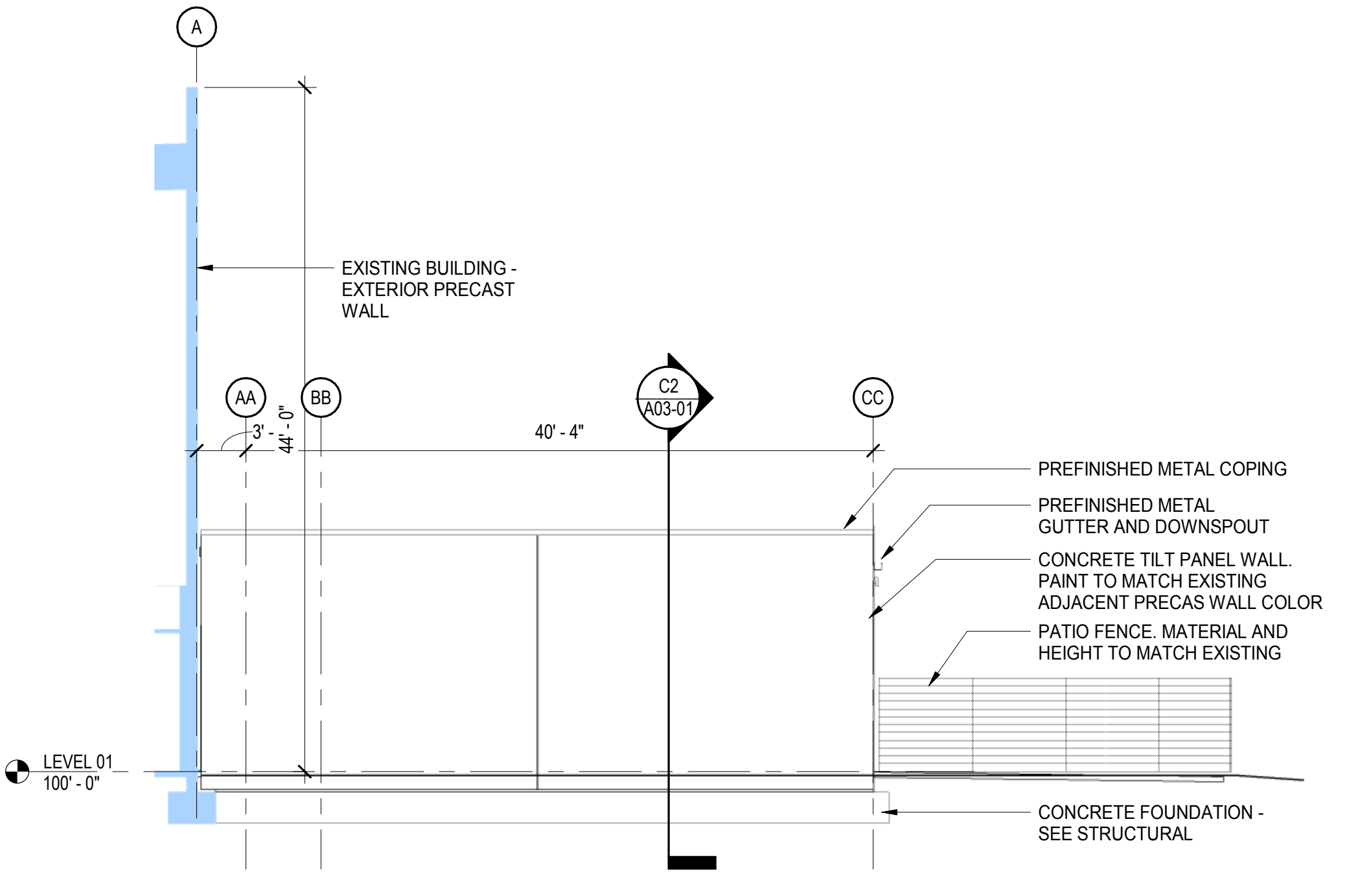
E2 WALL SECTION
1/2" = 1'-0"



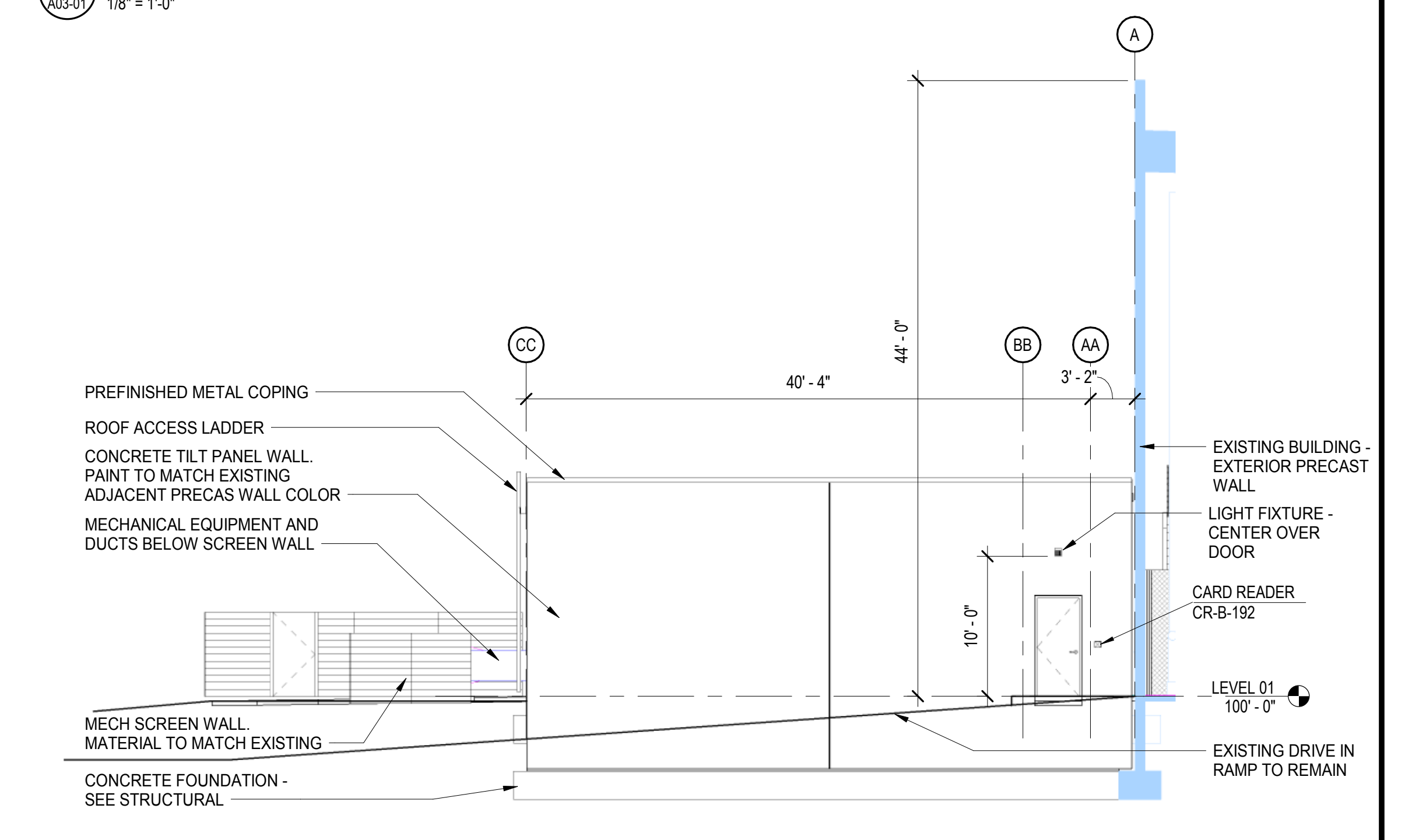
D2 WALL SECTION
1/2" = 1'-0"



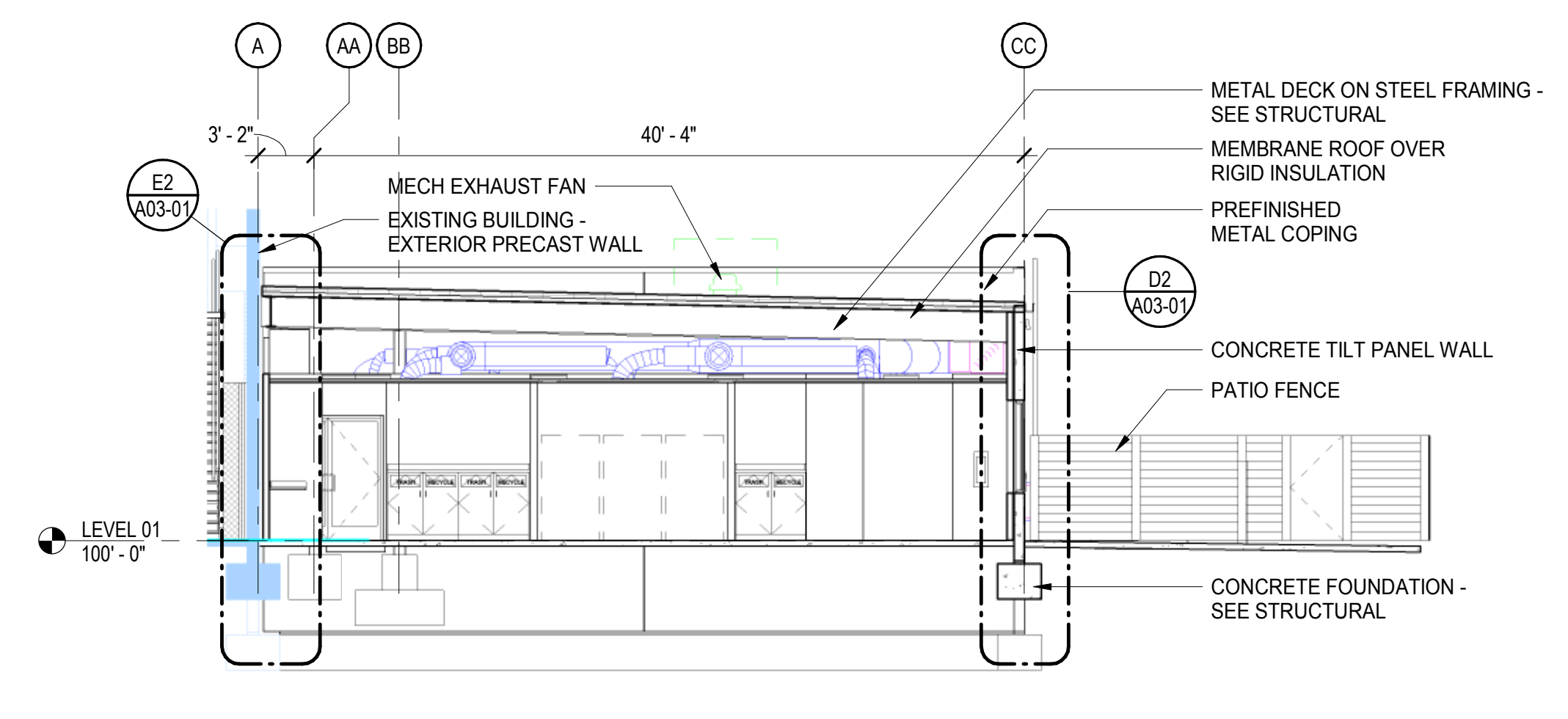
C2 WALL SECTION
1/2" = 1'-0"



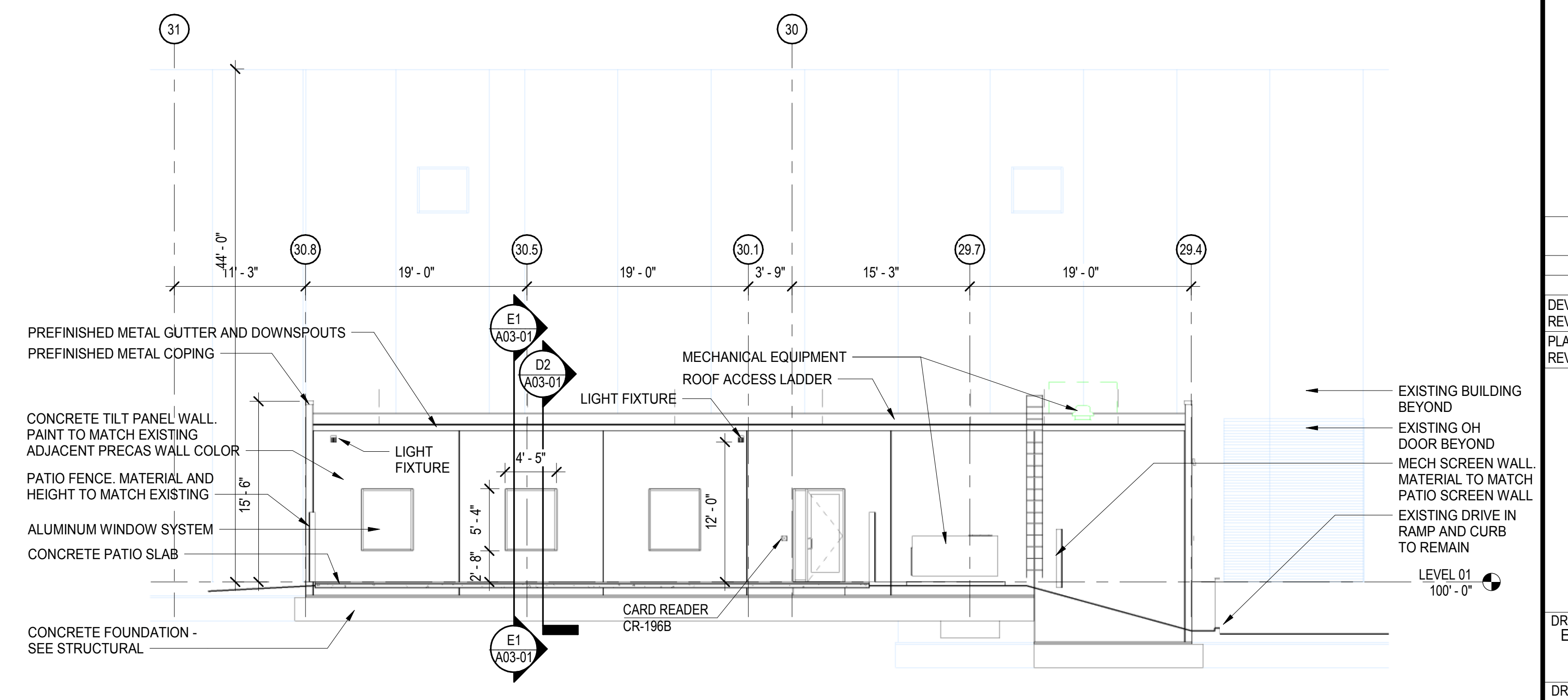
B4 SOUTH ELEVATION - ANNEX
1/8" = 1'-0"



B2 NORTH ELEVATION - ANNEX
1/8" = 1'-0"



E1 BUILDING SECTION
1/8" = 1'-0"



C1 EAST ELEVATION - ANNEX
1/8" = 1'-0"

CLAYCO
THE ART & SCIENCE OF BUILDING
2199 INNERBELT BUSINESS CENTER DRIVE
ST. LOUIS, MISSOURI 63114
PH: 314-429-5100 FX: 314-429-3137

ARCHITECT
FORUM
2199 INNERBELT BUSINESS CENTER DRIVE
ST. LOUIS, MISSOURI 63114
PH: 314-429-5100 FX: 314-429-3137

CIVIL ENGINEER
AMERICAN STRUCTUREPOINT, INC.

STRUCTURAL ENGINEER
ALPER AUDI, INC.

MECHANICAL ENGINEER
NATIONAL DESIGN BUILD SERVICES

ELECTRICAL ENGINEER
GAYLOR ELECTRIC

PLUMBING ENGINEER
A A HUBER & SONS, INC.

FIRE PROTECTION ENGINEER
DALMATIAN FIRE, INC.

KOHL'S EFC-5 - RENOVATION
ALLPOINTS MIDWEST BUILDING 6
9998 ALLPOINTS PARKWAY
PLAINFIELD, INDIANA 46168

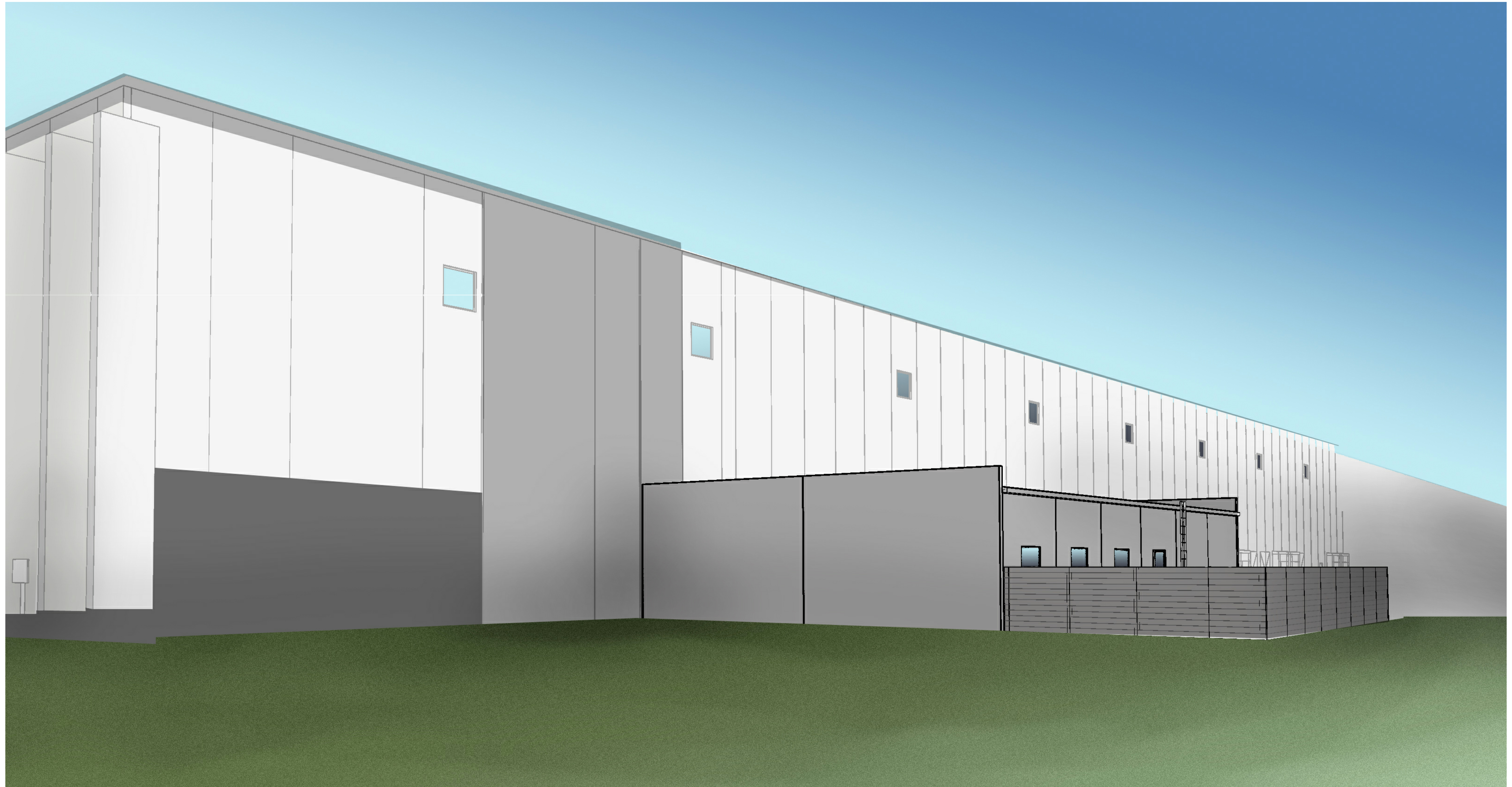
DRAWING ISSUE	
DESCRIPTION	DATE
DEVELOPMENT PLAN REVIEW	07.19.2019
PLANNING COMMISSION REVIEW	09.05.2019

DRAWING TITLE
ELEVATIONS AND SECTIONS

DRAWING NO.
A03-01

Forum # 601-03252 Consult#

8/12/2019 5:02:22 PM





D-Series Size 1 LED Wall Luminaire

Specifications Luminaire

Width: 13.3/4" (34.9 cm)	Weight: 12 lbs (5.4 kg)	Back Box (BBW, ELCW)	Width: 13.3/4" (34.9 cm)	BBW Weight: 5 lbs (2.3 kg)
Depth: 10" (25.4 cm)	Height: 6.3/8" (16.2 cm)	Depth: 4" (10.2 cm)	ELCW Weight: 10 lbs (4.5 kg)	
		Height: 6.3/8" (16.2 cm)		

Ordering Information

EXAMPLE: DSXW1 LED 20C 1000 40K T3M MVOLT DDBTXD

Series	LEDs	Drive Current	Color Temperature	Distribution	Voltage	Mounting	Control Options
DSXW1 LED	10C 10 LEDs (non-engine)	350 350 mA	30K 3000 K	T2S Type II Short	MVOLT 120 ¹	Shipped included (blank) Surface mounting bracket BBW Surface-mounted back box (for conduct. eng ¹)	Shipped installed PE Photometric cell, button type ² DMC 0-10V dimming area/pull outside fixture (for use with an external control, ordered separately) PIR 180° motion/ambience light sensor, <15' range, 16" ³ PIRHFCEV 180° motion/ambience light sensor, 15-30' range, 16" ³ PIRHFCEV Motion/ambience sensor, 0-15' mounting height, ambient sensor enabled at 16" ³ PIRHFCEV Motion/ambience sensor, 15-30' mounting height, ambient sensor enabled at 16" ³ ELCW Emergency battery backup (includes external component enclosure, CA Title 20 Noncompliant ¹²)
	20C 20 LEDs (non-engine) ¹	530 530 mA	40K 4000 K	T2M Type II Medium	208 ¹		
	700 700 mA	50K 5000 K	T2S Type II Short	208 ¹			
	1000 1000 mA (1 A) ¹	AMBCP Amber phosphor converted	T3M Type III Medium	240 ¹			
			T4M Type IV Medium	277 ¹			
			TFTM Forward Throw Medium	347 ^{1,4}			
			ASYD Asymmetric diffuse	480 ^{1,4}			

Other Options

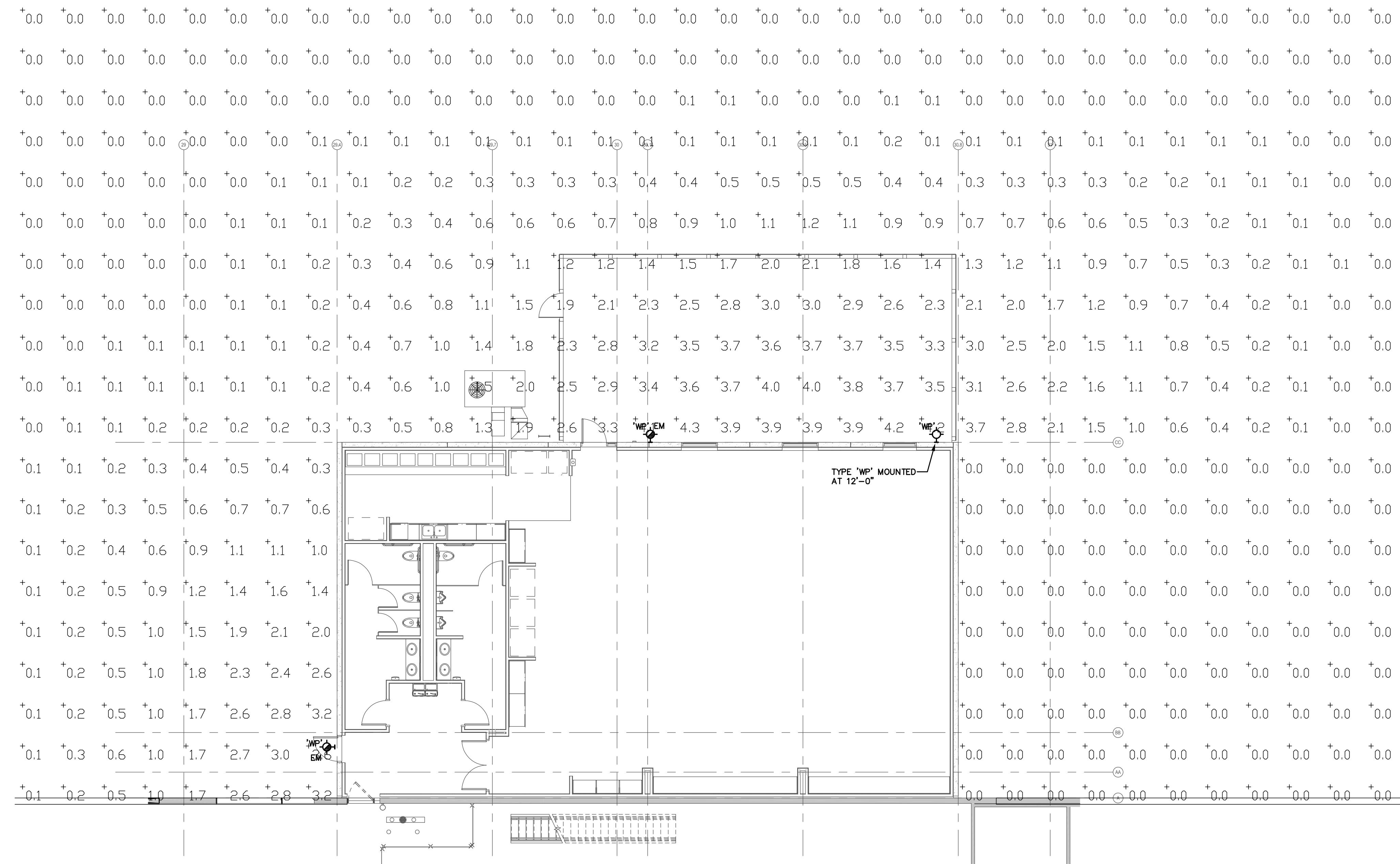
Shipped installed	Shipped separately ¹	Finish (optional)
SF Single fuse (120, 277 or 347V) ¹⁰	BSW Bird-deterrent spikes	DBRZD Dark bronze
DF Double fuse (208, 240 or 480V) ¹⁰	WG Wire guard	DBLXD Black
HS House-side shield ¹¹	VG Vandal guard	DNALD Natural aluminum
SFD Separate surge protector ¹¹	DDL Diffused drop lens	DBLXD Textured black
		DNATD Textured natural aluminum

- Accessories**
- Ordered and shipped separately:
- DSXW1S House-side shield (seper. wire guard)
 - DSXW1W Bird-deterrent spikes
 - DSXW1V3 Vandal guard
 - DSXW1V4 Vandal guard accessory
- NOTES**
- 20C 1000 is not available with PIR, PIRHFCEV or PIRHFCEV.
 - MOCET driver operates on any line voltage from 120-277V (50/60 Hz).
 - Single fuse (SF) requires 120, 277 or 347 voltage option. Double fuse (DF) requires 208, 240 or 480 voltage option.
 - Only available with 20C, 200mA or 1000mA. Not available with PIR or PIRHFCEV.
 - Back box ships installed on fixture. Cannot be field installed. Cannot be ordered as an accessory.
 - Photocontrol (PIE) requires 120, 208, 240, 277 or 347 voltage option. Not available with motion/ambience light sensors (PIR or PIRHFCEV).
 - Reference Motion Sensor table on page 3.
 - Cold weather (-20C) rated. Not compatible with conduct entry applications. Not available with BBW mounting option. Not available with 347 or 480 voltage options. Emergency components located in back box housing. Emergency mode IES files located on product page at www.lithonia.com.
 - Not available with SFD.
 - Not available with ELCW.
 - Also available as a separate accessory; see Accessories information.
 - Not available with ELCW.

Introduction

The D-Series Wall luminaire is a stylish, fully integrated LED solution for building-mount applications. It features a sleek, modern design and is carefully engineered to provide long-lasting, energy-efficient lighting with a variety of optical and control options for customized performance.

With an expected service life of over 20 years of nighttime use and up to 74% in energy savings over comparable 250W metal halide luminaires, the D-Series Wall is a reliable, low-maintenance lighting solution that produces sites that are exceptionally illuminated.



SITE LIGHTING PHOTOMETRIC PLAN
 SCALE: 1/8"=1'-0"
 NORTH

KOHL'S EFC-5 - RENOVATION
 ALLPOINTS MIDWEST BUILDING 6
 9998 ALLPOINTS PARKWAY
 PLAINFIELD, INDIANA 46168

DRAWING ISSUE

DESCRIPTION	DATE

Bufftech[®]

Molded and Extruded Fence Products



CertainTeed
SAINT-GOBAIN

The Bufftech® Advantage

Two innovative product lines under one great brand

Long-lasting beauty, superior performance and the best protection you can get – that’s the Bufftech Advantage. Bufftech fence comes in an array of sophisticated styles, complementary colors and authentic TrueTexture™ finishes along with premium features to ensure it will outlast and outperform the competition. Bufftech also features a superior warranty including ColorLast® fade protection.

Molded Fence

Bufftech has reinvented fence manufacturing with its patented design of rotationally-molded fence, allowing realistic granite-stone and deep-grain wood textures molded from real wood and stone. Molded fence has very high impact-resistance and excellent sound absorption for quiet and secure outdoor living spaces and yards. These extremely durable privacy fences also offer fade-resistant colors and steel-reinforced sections.

Extruded Fence

Bufftech extruded fence is the undisputed leader in style, color and texture. Our innovative textures are molded from real wood and stucco to deliver the most authentic look available today. Fade-resistant colors, high-quality accessories, durable hardware and steel reinforced rails ensure a long-lasting installation. Extruded fence also offers SureStart™ protection, an exclusive CertainTeed benefit covering warranted repair and replacement costs, including labor, for five years after installation.

On Cover:

Allegheny in Beige Granite

Chesterfield CertaGrain® in Arctic Blend with Spindle Accent

Breezewood



Fence Style and Color.

Breezewood Select Cedar Texture in Arctic Blend



Breezewood Select Cedar Texture

Thru-picket "good neighbor", modern design is equally attractive on both sides. Top rails in ColorLast® colors feature reinforcement for added strength and durability.

Heights: 4', 5' & 6'
Picket Style: 7/8" x 3"
Picket Spacing: 21/32"
Steel Reinforced Bottom Rail





Cap Styles (shown in Sierra Blend)



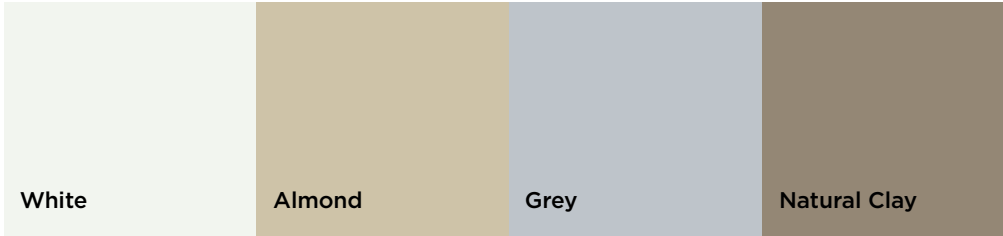
Textured Flat External Internal Textured Flat Top External Textured New England

Colors and Textures Extruded

CertaStucco™



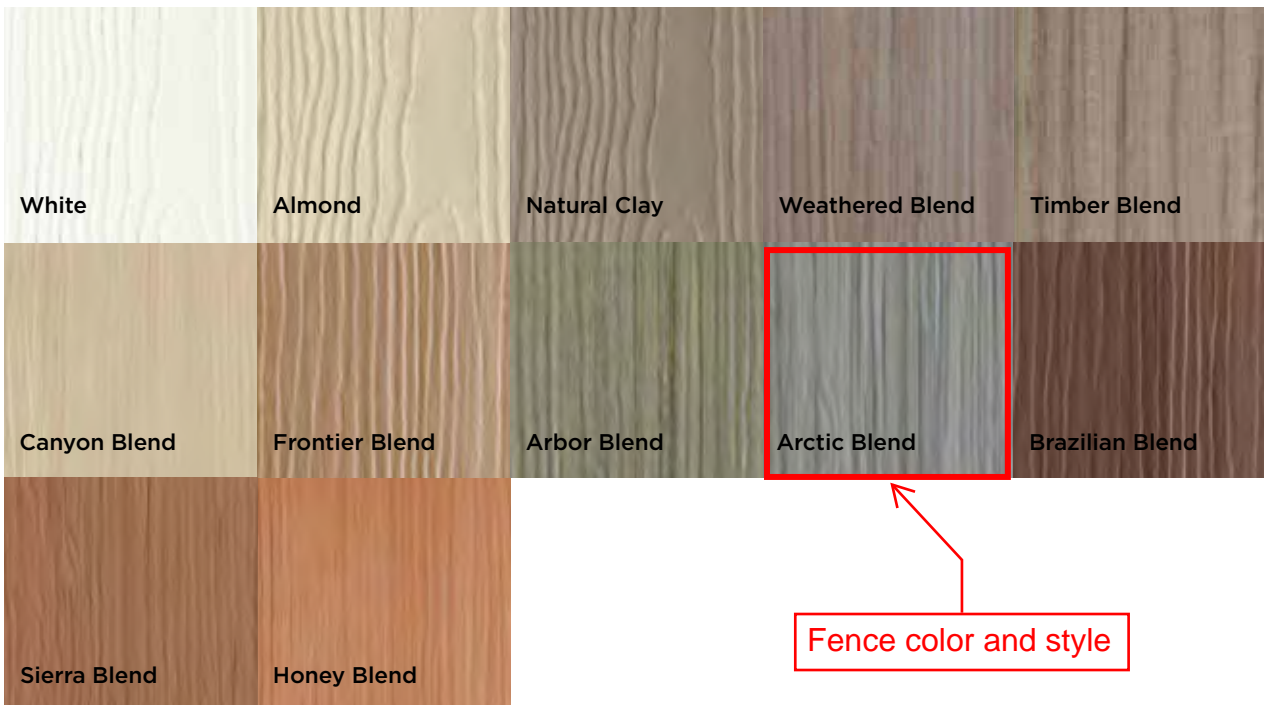
Smooth



Select Cedar

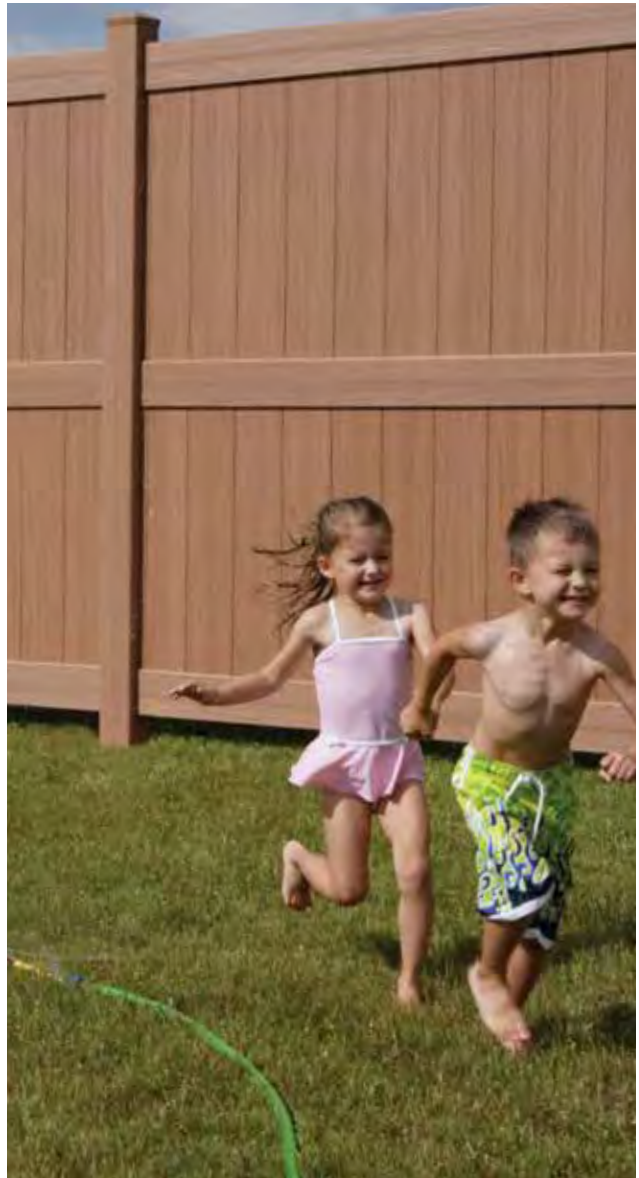


CertaGrain®



Make a Smart Investment

PERFORMANCE FEATURES	Bufftech
Lifetime limited warranty	✓
Transferable warranty*	✓
5-year labor warranty*	✓
Dark color fade warranty	✓
Made in the USA	✓
Never needs painting or staining	✓
Won't chip, peel, crack or splinter	✓
Won't rot or support mold growth	✓
Impervious to termites/wood-boring insects	✓
Lead free	✓
No harmful chemicals	✓
High-quality raw materials	✓
Concealed fasteners	✓
Rigid design	✓
Wide choice of colors	✓
Innovative textures	✓
Steel reinforced rails	✓
Class A rating for flame spread	✓
Self-extinguishing	✓
Easy to assemble	✓
Building code compliant	✓
Meets ASTM standards	✓



*Bufftech extruded only



facebook.com/certainteedCurbAppeal



[YouTube youtube.com/ctCurbAppeal](https://youtube.com/ctCurbAppeal)



CertainTeed Corporation

CEILINGS • DECKING • FENCE • GYPSUM • INSULATION • RAILING • ROOFING • SIDING • TRIM
 20 Moores Road Malvern, PA 19355 Professional: 800-233-8990 Consumer: 800-782-8777 certainteed.com

**Semi-Private
Breezewood with Select Cedar
Texture**

6 ft. High / 8 ft. Wide

Select one of the available colors

- Almond ■ Arctic Blend ■ Brazilian Blend
- Clay ■ Sierra Blend ■ Weathered Blend
- White

For colors, add color letters to item number: Almond (AL), Arctic Blend (AC4), Brazilian Blend (BR4), Clay (C), Sierra Blend (SB4), Weathered Blend (WB4).

Note: Mixed color sections must be ordered as components; pricing will be higher than standard sections.

QUANTITY	PRODUCT NUMBER	DESCRIPTION
----------	----------------	-------------

FENCE SECTIONS

_____	30206	Select Cedar Breezewood Fence Section (6 ft. x 8 ft.)
-------	-------	---

Note: Fence section includes A, B, C, D and section hardware. Posts and caps sold separately.

5 IN. X 5 IN. POSTS

_____	75761	Select Cedar Corner Post 5 in. x 5 in. x 107 in.
_____	75762	Select Cedar Line Post 5 in. x 5 in. x 107 in.
_____	75763	Select Cedar End Post 5 in. x 5 in. x 107 in.
_____	759108	CertaGrain Blank Post Heavy Wall 5 in. x 5 in. x 107 in.

POST CAPS

_____	70441	CertaGrain Flat Cap External Internal Fit 5 in. x 5 in.
_____	70444	CertaGrain Flat Top Cap Ext 5 in. x 5 in.
_____	70459	Textured New England Cap 5 in. x 5 in.

GATES (hardware ordered separately)

_____	42984	Select Cedar Gate Kit (builds up to 50 in. wide gate)
_____	70031	Gate Extension Kit (builds up to 60 in. gate) gate kit must also be ordered
_____	437096	Breezewood Select Cedar Preassembled Gate 50 in. Wide
_____	70106	Aluminum 5 in. x 5 in. x 106 in. Gate Post Stiffener
_____	27635	Drop Pin Kit
_____	27712	5 ft. to 6 ft. Height Gate Hardware (self-closing hinges and latch)
_____	27722	Key Entry Nylon Gate Hardware (5 ft. and 6 ft. height fence)
_____	27724	LokkLatch Magnetic Gate Hardware (5 ft. and 6 ft. height fence)
_____	27731	Standard Stainless Steel Gate Hardware Pebble Black Finish

Note: Gate kits include (2) 2-1/2 in. x 4 in. up-rights, caps and screws. Rails and pickets ordered separately.

OPTIONAL/EXTRA MATERIALS

_____	70090	Steel Reinforcement Channel x 92 in. for 2 in. x 6 in. Rail
_____	809932	Breezewood Select Cedar Top Rail 2 in. x 6 in. x 95 in.
_____	804932	Breezewood Select Cedar Top/Bottom Rail with Steel 2 in. x 6 in. x 95 in.
_____	909564	Breezewood Select Cedar Mid Brace 2 in. x 4 in. x 63-3/8"
_____	929596	Select Cedar Picket 7/8 in. x 3 in. x 96 in. Crimped
_____	60783P	Lock Rings (order 2 per rail) Qty: 24

Note: 2" x 4" = 1-3/4" x 3-1/2"

- A TOP RAIL**
PALLET QUANTITY = 80
2" x 6" x 95"
Note: Arctic Blend, Brazilian Blend, Clay, Sierra Blend and Weathered Blend colors include steel in top rail.
- B PICKETS**
PALLET QUANTITY = 480
16 pieces of 7/8" x 3" x 96"
- C MID-BRACE**
PALLET QUANTITY = 138
2" x 4" x 63-3/8"
- D BOTTOM RAIL**
PALLET QUANTITY = 80
2" x 6" x 95"
Includes steel channel.
- E POST**
PALLET QUANTITY = 48
5" x 5" x 107"

